



OTOMOTİV SANAYİİ DERNEĞİ
AUTOMOTIVE MANUFACTURERS ASSOCIATION

AYLIK RAPOR

Automotive Industry Monthly Report

Temmuz / July 2010

- **Üretim/Production**
- **Satış/Sales**
- **İthalat/Imports**
- **İhracat/Exports**

OSD "OICA" Üyesidir



OSD is a Member of "OICA"



2010 Temmuz Ayı Özeti / 2010 July Summary

KONULAR/ MATTERS		AYLIK/MONTHLY			7 AY/ 7 MONTHS			YILLIK/YEARLY		
		2009	2010	2010/2009 (%)	2009	2010	2010/2009 (%)	2009	2010	2010/2009 (%)
Üretim/ Production	Toplam/ Total	86.555	80.529	-7,0	480.211	627.551	30,7	827.640	1.022.971	23,6
	Otomobil/ P.Cars	54.873	47.516	-13,4	300.802	359.998	19,7	474.471	570.127	20,2
Pazar / Market	Toplam/ Total	30.246	63.719	110,7	312.669	353.015	12,9	513.807	616.215	19,9
	Otomobil/ P.Cars	16.637	41.399	148,8	206.333	227.704	10,4	322.356	391.190	21,4
İthalat / Import	Toplam/ Total	14.781	37.207	151,7	173.699	203.333	17,1	294.034	343.555	16,8
	Otomobil/ P.Cars	10.318	28.532	176,5	135.675	155.151	14,4	216.506	263.018	21,5
İhracat / Export	Toplam/ Total	64.168	60.690	-5,4	341.815	459.941	34,6	598.513	747.096	24,8
	Otomobil/ P.Cars	43.651	39.230	-10,1	223.044	276.131	23,8	380.378	442.081	16,2
İhracat / Export (\$)	Toplam/ Total **	1.438.587.668	1.259.699.321	-12,4	7.862.871.017	9.402.651.329	19,6	14.411.837.334	16.053.249.573	11,4
	Otomobil/ P.Cars	730.232.156	527.502.438	-27,8	3.260.739.531	3.860.801.339	18,4	5.433.311.292	6.682.965.661	23,0

PARAMETRELER / PARAMETERS		AYLIK/MONTHLY			7 AY/ 7 MONTHS			YILLIK/YEARLY		
		2009	2010	2010/2009 (%)	2009	2010	2010/2009 (%)	2009	2010	2010/2009 (%)
ÜFE/ PPI		-0,71	-0,16	**	2,54	4,77	**	-3,75	8,24	**
TÜFE/ CPI		0,25	-0,48	**	2,08	3,09	**	5,39	7,58	**
Sanayi Endeksi/ Industry Index		-0,38	0,21	**	2,02	2,85	**	-6,28	3,87	**
\$ (*)		1,4762	1,5118	2,4	1,5969	1,5293	-4,2	1,5219	1,5109	-0,7
EURO (*)		2,0835	1,9691	-5,5	2,1460	2,0062	-6,5	2,0602	2,0740	0,7
Japon Yeni (*)		1,5443	1,7508	13,4	1,6660	1,6910	1,5	1,5724	1,6643	5,8

(*) Ortalama Değerler / Average Values

(**) Toplam Sanayi / Total Industry Including Components

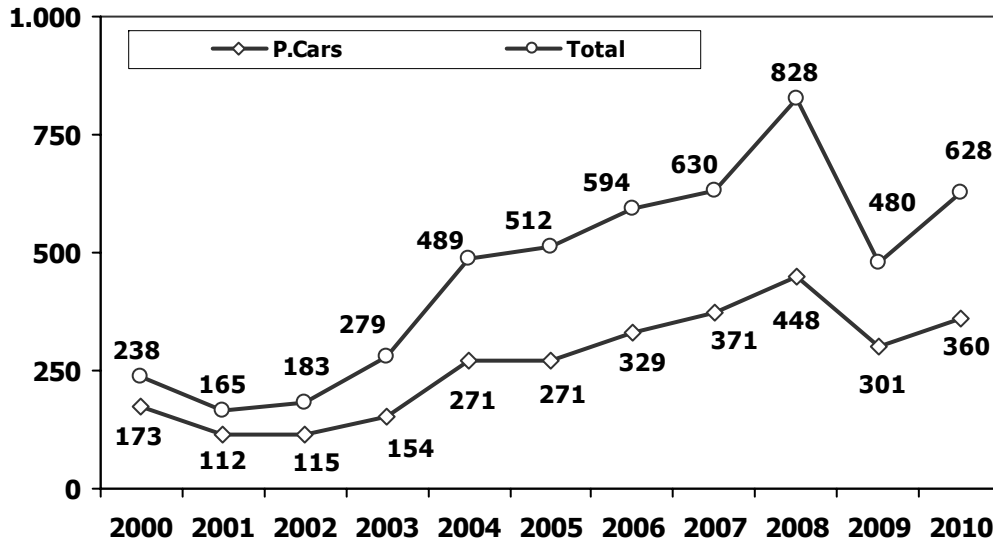


2009/2010 Yılları Üretim 2009/2010 Production

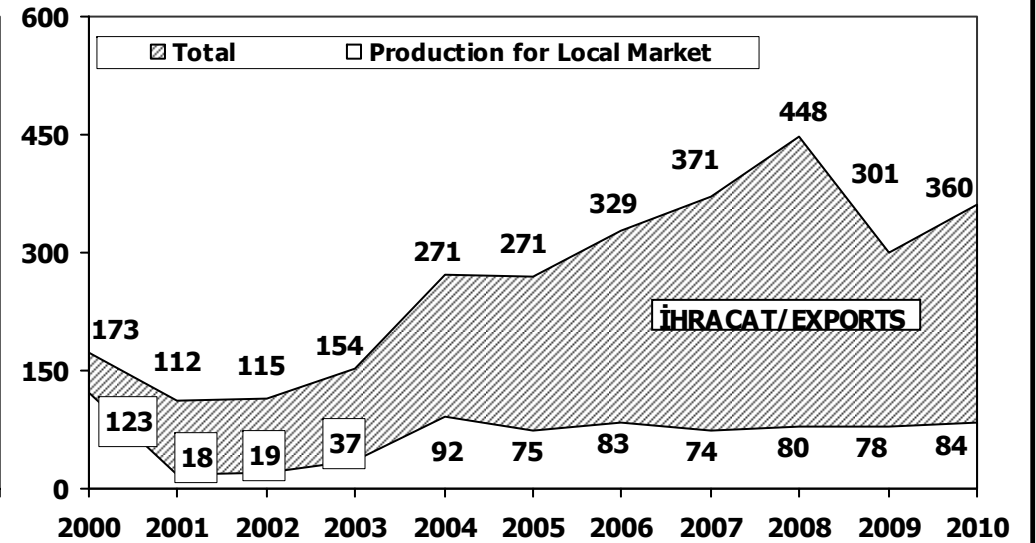
K.KAMYON : AYA 3.5-12 Ton (L.Truck:GVW 3.5-12 Ton)
B.KAMYON : AYA 12 Ton'dan Büyük (M.Truck:GVW 12 Ton And Up)

TİPLER	TEMMUZ AYI ÜRETİMİ July Production		7 AYLIK ÜRETİM 7 Months Production		DEĞİŞİM % Percent Change %	
	2009	2010	2009	2010	TEMMUZ	7 AY 7 Months
OTOMOBİL - Pass.Car	54.873	47.516	300.802	359.998	-13	20
TİCARİ ARAÇLAR - Commercial Vehicles	31.682	33.013	179.409	267.553	4	49
* B. KAMYON - M. Truck	569	1.561	2.707	8.453	174	212
* K. KAMYON - L. Truck	48	299	194	1.688	523	770
* KAMYONET - Pick Up	29.417	29.213	165.493	244.950	-1	48
* OTOBÜS - Bus	611	403	3.566	2.912	-34	-18
* MİNİBÜS - Minibus	733	1.337	6.337	8.208	82	30
* MİDİBÜS - Midibus	304	200	1.112	1.342	-34	21
TAŞIT ARAÇLARI TOPLAM - MV Total	86.555	80.529	480.211	627.551	-7	31
TRAKTÖR - F.Tractor	1.610	3.266	8.314	17.471	103	110
GENEL TOPLAM - Grand Total	88.165	83.795	488.525	645.022	-5	32

Toplam Üretim ve Otomobil Üretimi (x1000) (Ocak-Temmuz)
Total & P.Cars Production (x1000) (January- July)



Otomobil Üretimi ve İhracat (x1000) (Ocak-Temmuz)
P.Cars Production & Exports (x1000) (January- July)





7 Aylık Üretim (7 Months Production)

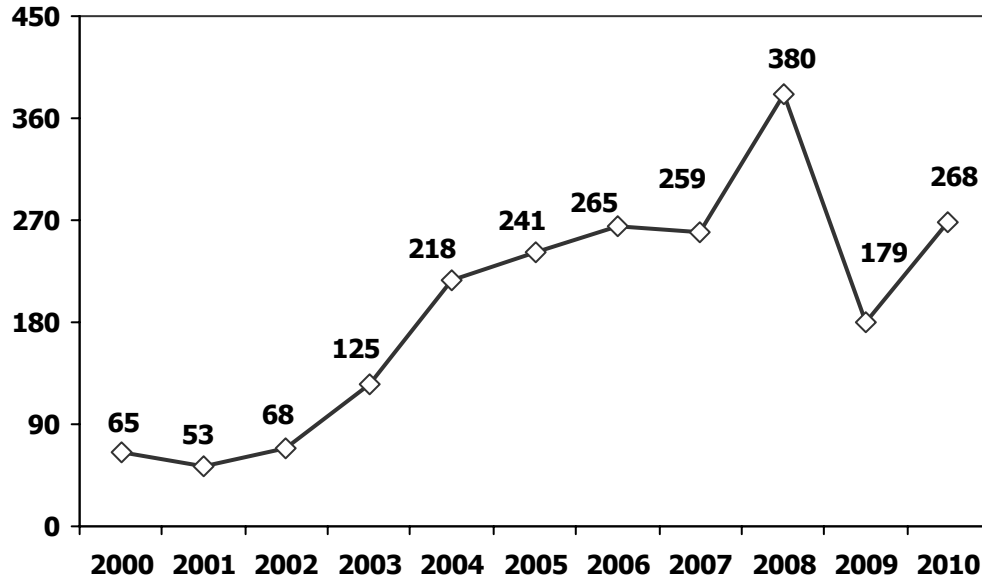
FİRMALAR Companies	OTOMOBİL Pass.Car	%	K.KAMYON L.Truck	%	B.KAMYON Mid.Truck	%	KAMYONET Pick Up	%	OTOBÜS Bus	%	MİNİBÜS Mini-Bus	%	MİDİBÜS Midi-Bus	%	TRAKTÖR F.Tractor	%	TOPLAM Totals
A.I.O.S.	0	0	609	36	0	0	373	0	0	0	0	0	650	48	0	0	1.632
B.M.C.	0	0	0	0	800	9	0	0	290	10	0	0	0	0	0	0	1.090
FORD OTOSAN	0	0	0	0	1.775	21	117.614	48	0	0	7.794	95	0	0	0	0	127.183
HATTAT	0	0	0	0	0	0	0	0	0	0	0	0	0	0	1.018	6	1.018
HONDA TÜRKİYE	11.502	3	0	0	0	0	0	0	0	0	0	0	0	0	0	0	11.502
HYUNDAI ASSAN	41.202	11	0	0	0	0	0	0	0	0	0	0	0	0	0	0	41.202
KARSAN	0	0	280	17	245	3	12.585	5	0	0	253	3	0	0	0	0	13.363
M. BENZ TÜRK	0	0	0	0	5.633	67	0	0	1.401	48	0	0	0	0	0	0	7.034
MANTÜRKİYE	0	0	0	0	0	0	0	0	627	22	0	0	0	0	0	0	627
OTOKAR	0	0	0	0	0	0	343	0	162	6	161	2	422	31	0	0	1.088
OYAK RENAULT	192.696	54	0	0	0	0	0	0	0	0	0	0	0	0	0	0	192.696
TEMSA	0	0	799	47	0	0	243	0	432	15	0	0	270	20	0	0	1.744
TOFAŞ	68.594	19	0	0	0	0	113.792	46	0	0	0	0	0	0	0	0	182.386
TOYOTA	46.004	13	0	0	0	0	0	0	0	0	0	0	0	0	0	0	46.004
TÜRK TRAKTÖR	0	0	0	0	0	0	0	0	0	0	0	0	0	0	16.453	94	16.453
TOPLAM	359.998	100	1.688	100	8.453	100	244.950	100	2.912	100	8.208	100	1.342	100	17.471	100	645.022

Temmuz Ayı Üretimi (July Production)

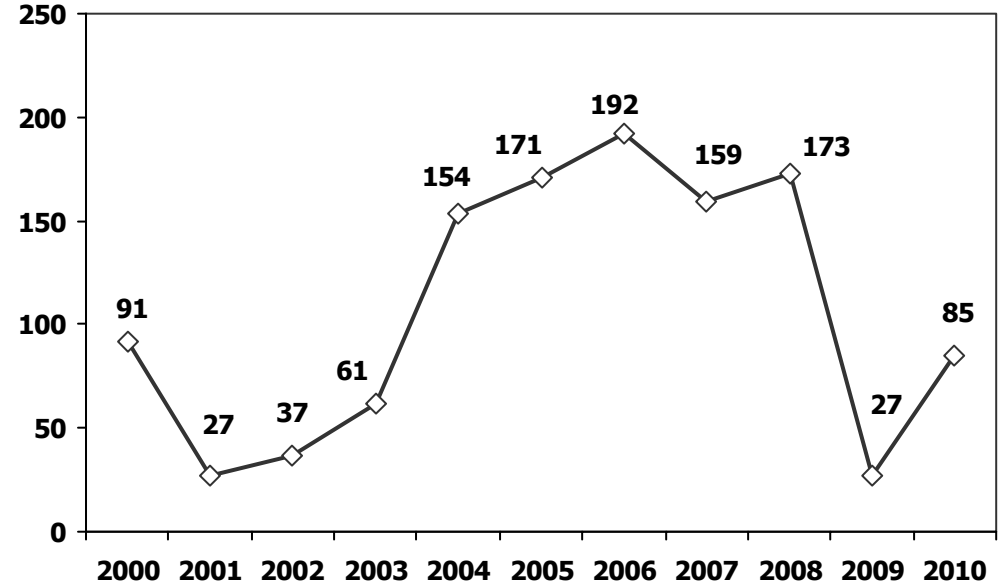
FİRMALAR Companies	OTOMOBİL Pass.Car	%	K.KAMYON L.Truck	%	B.KAMYON Mid.Truck	%	KAMYONET Pick Up	%	OTOBÜS Bus	%	MİNİBÜS Mini-Bus	%	MİDİBÜS Midi-Bus	%	TRAKTÖR F.Tractor	%	TOPLAM Totals
A.I.O.S.	0	0	144	48	0	0	24	0	0	0	0	0	63	32	0	0	231
B.M.C.	0	0	0	0	152	10	0	0	28	7	0	0	0	0	0	0	180
FORD OTOSAN	0	0	0	0	343	22	12.876	44	0	0	1.139	85	0	0	0	0	14.358
HATTAT	0	0	0	0	0	0	0	0	0	0	0	0	0	0	148	5	148
HONDA TÜRKİYE	1.206	3	0	0	0	0	0	0	0	0	0	0	0	0	0	0	1.206
HYUNDAI ASSAN	6.600	14	0	0	0	0	0	0	0	0	0	0	0	0	0	0	6.600
KARSAN	0	0	31	10	62	4	1.864	6	0	0	188	14	0	0	0	0	2.145
M. BENZ TÜRK	0	0	0	0	1.004	64	0	0	190	47	0	0	0	0	0	0	1.194
MANTÜRKİYE	0	0	0	0	0	0	0	0	78	19	0	0	0	0	0	0	78
OTOKAR	0	0	0	0	0	0	26	0	25	6	10	1	75	38	0	0	136
OYAK RENAULT	23.693	50	0	0	0	0	0	0	0	0	0	0	0	0	0	0	23.693
TEMSA	0	0	124	41	0	0	48	0	82	20	0	0	62	31	0	0	316
TOFAŞ	7.925	17	0	0	0	0	14.375	49	0	0	0	0	0	0	0	0	22.300
TOYOTA	8.092	17	0	0	0	0	0	0	0	0	0	0	0	0	0	0	8.092
TÜRK TRAKTÖR	0	0	0	0	0	0	0	0	0	0	0	0	0	0	3.118	95	3.118
TOPLAM	47.516	100	299	100	1.561	100	29.213	100	403	100	1.337	100	200	100	3.266	100	83.795



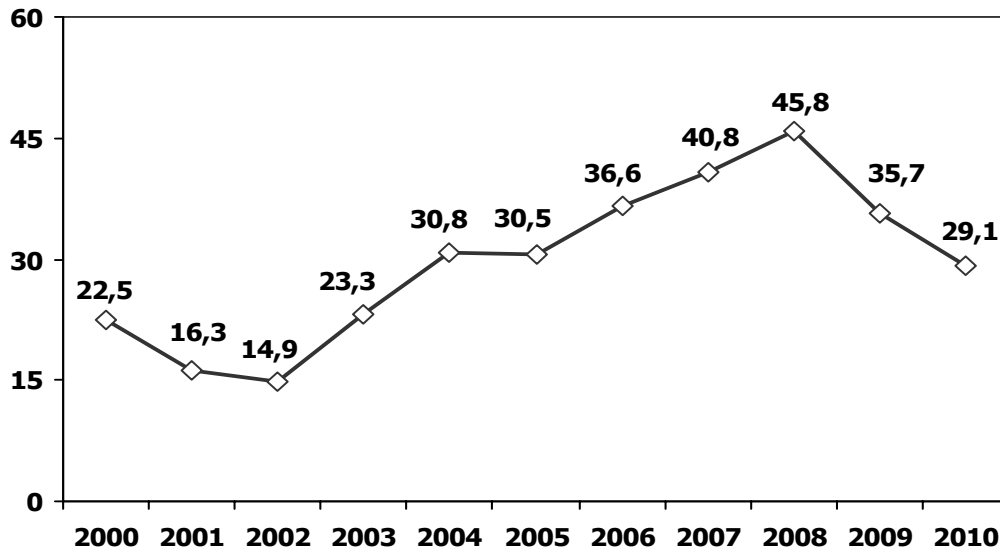
Ticari Araç Üretimi (x1000) (Ocak-Temmuz)
Commercial Vehicle Production (x1000) (January- July)



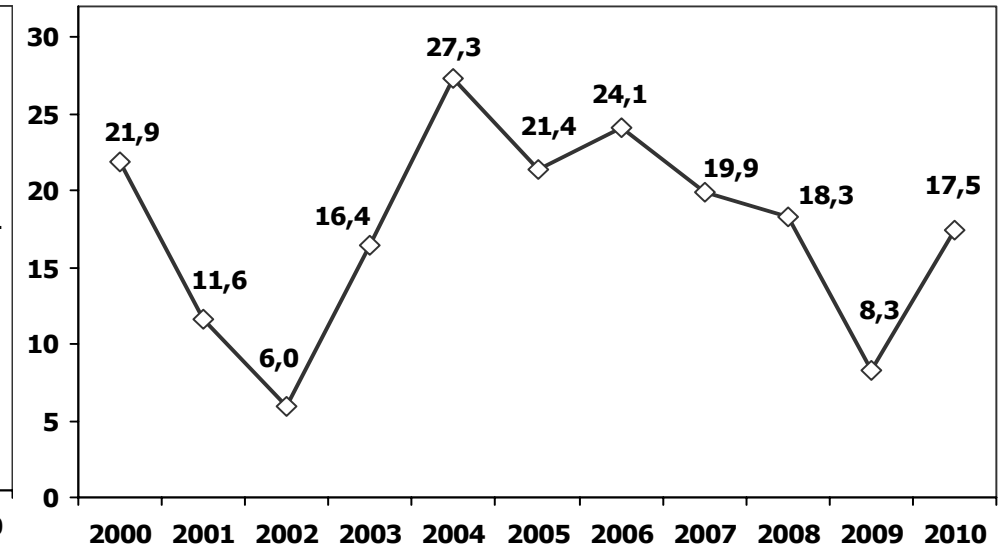
(AYA >12 Ton) **Büyük Kamyon Üretimi (x100)** (Ocak-Temmuz)
(GVW >12 Ton) Heavy Truck Production (**x100**) (January- July)



Otobüs Üretimi (x100) (Ocak-Temmuz)
Bus Production (**x100**) (January- July)

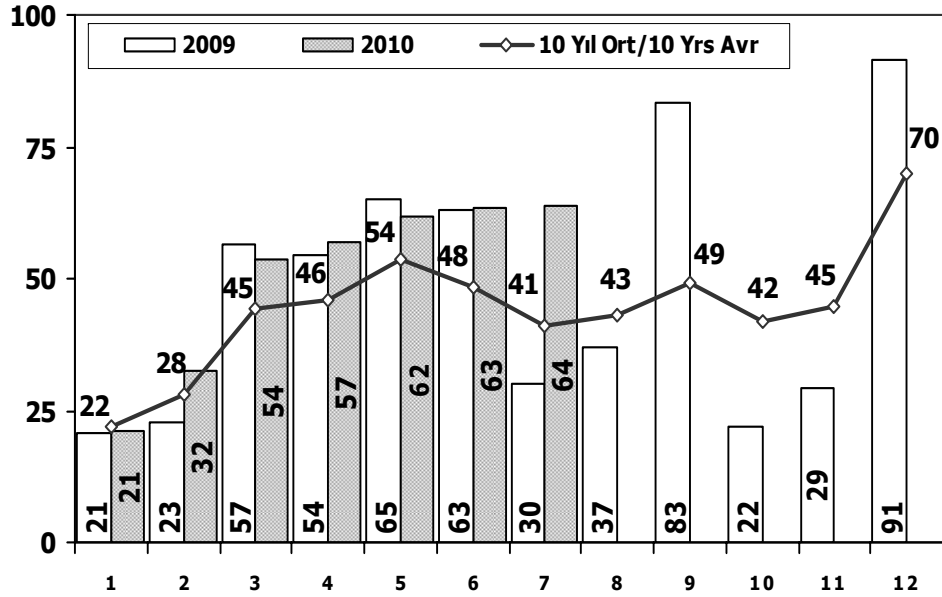


Traktör Üretimi (x1000) (Ocak-Temmuz)
F. Tractor Production (x1000) (January- July)



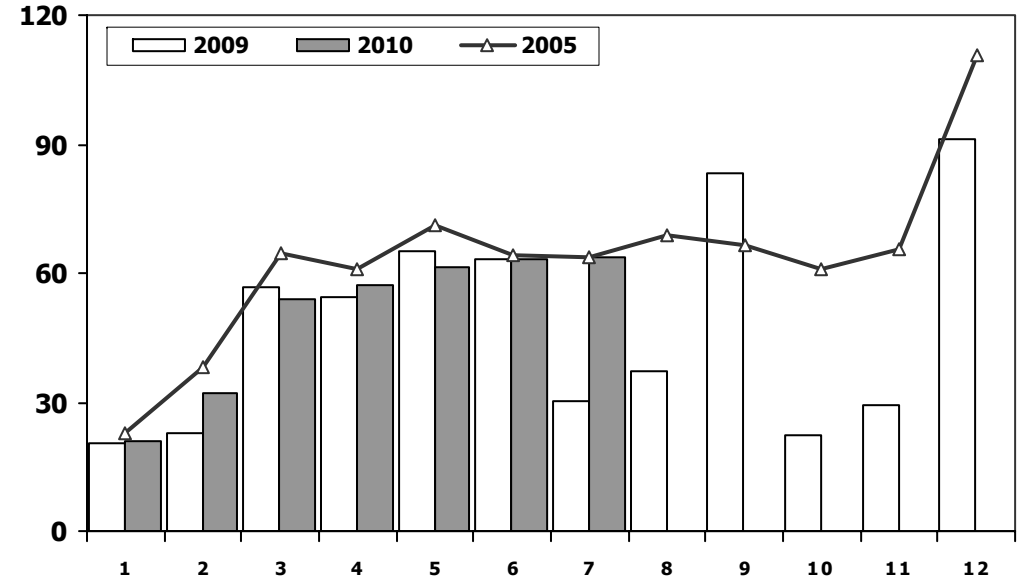


Toplam Pazarın Analizi (x1000) Total Market Analysis (x1000)



Aylar/ Months	10 Yil Ort. 10 Yrs Avr. (x1000)	2010 (x1000)	%
1	21,9	21,1	-3,6
2	28,0	32,3	15,5
3	44,5	53,8	21,0
4	45,7	57,1	24,8
5	53,8	61,6	14,6
6	48,4	63,4	31,0
7	41,1	63,7	55,0
Total	283,3	353,0	24,6

Toplam Pazar (x1000) Total Market (x1000)

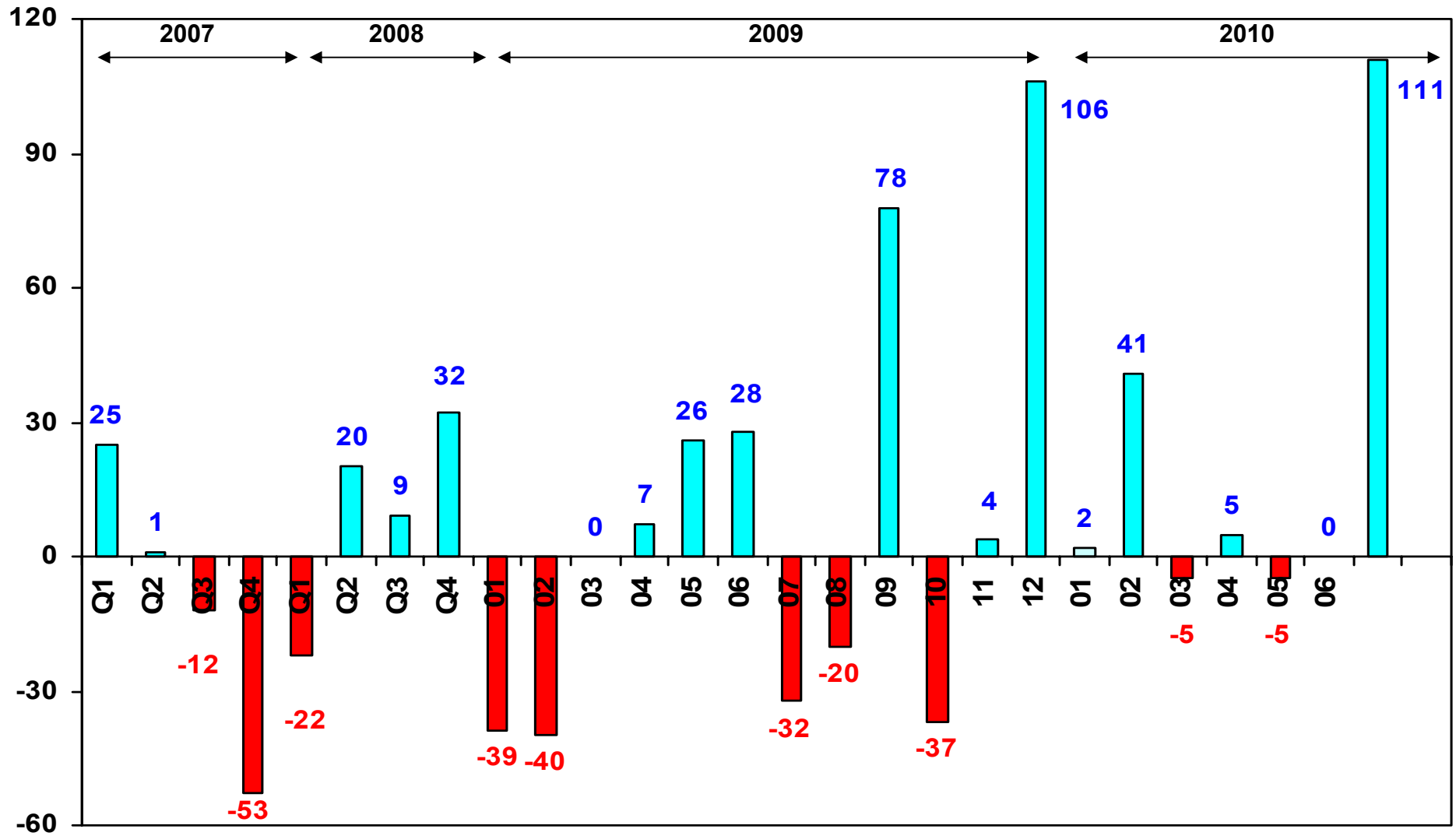


	1	2	3	4	5	6	7	8	9	10	11	12	7 Ay/Mo	Total
2000	18.646	35.458	48.337	52.371	66.900	67.587	56.914	60.460	66.600	70.622	71.220	41.406	346.213	656.521
2001	14.390	13.654	11.398	14.724	19.002	20.128	19.027	17.450	12.307	11.579	16.836	24.595	112.323	195.090
2002	2.248	4.310	8.065	12.192	16.807	15.648	16.509	14.738	16.186	18.386	18.478	30.875	75.779	174.442
2003	12.576	11.317	17.095	20.380	27.803	30.517	32.268	28.839	40.315	50.051	44.081	82.721	151.956	397.963
2004	38.621	39.389	71.723	77.056	84.634	63.228	57.307	56.422	59.429	56.153	52.237	85.070	431.958	741.269
2005	22.687	38.291	64.502	60.873	71.383	64.379	63.847	68.647	66.580	60.791	65.719	110.838	385.962	758.537
2006	29.969	44.646	65.090	68.853	83.289	58.203	40.037	47.374	49.629	39.805	55.898	82.722	390.087	665.515
2007	24.950	31.702	45.488	45.633	51.255	51.661	50.117	54.171	50.078	56.058	67.017	106.076	300.806	634.206
2008	33.792	38.121	56.814	50.967	51.627	49.393	44.692	46.592	46.829	35.147	28.152	44.418	325.406	526.544
2009	20.631	22.846	56.531	54.426	64.887	63.102	30.246	37.092	83.403	22.117	29.202	91.386	312.669	575.869
2010	21.055	32.318	53.830	57.080	61.627	63.386	63.719	0	0	0	0	0	353.015	353.015



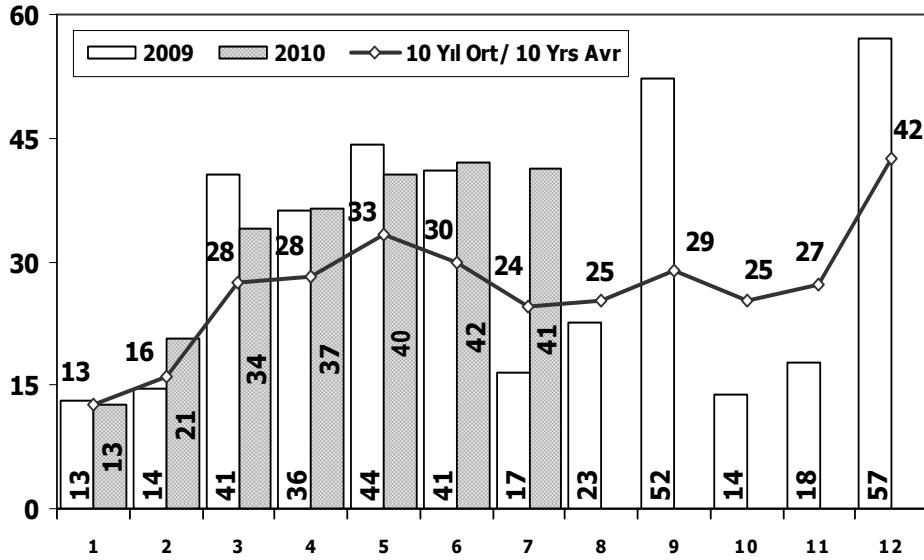
TOPLAM PAZARDA AYLIK DEĞİŞİM (%)

Monthly Change in Total Market - %

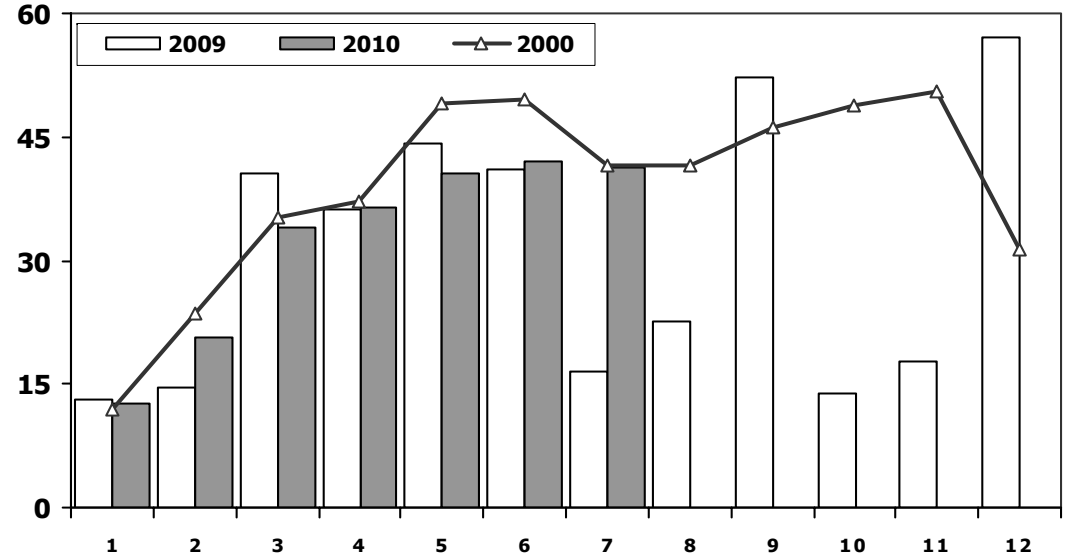




Otomobil Pazarının Analizi (x1000) P.Cars Market Analysis (x1000)



Otomobil Pazarı (x1000) P.Cars Market (x1000)



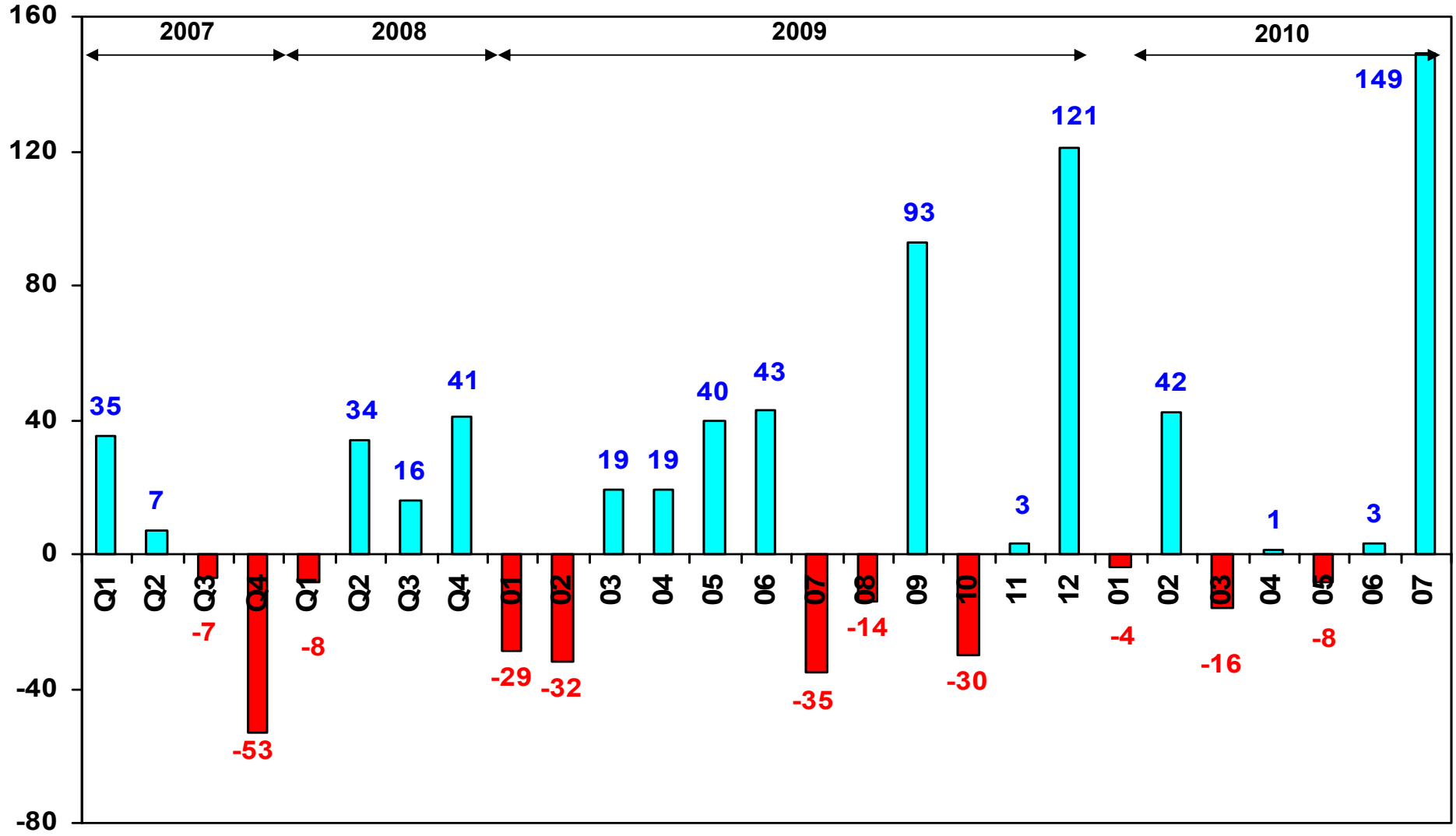
Aylar / Months	10 Yil Ort. 10 Yrs Avr. (x1000)	2010 (x1000)	%
1	12,6	12,6	0,0
2	16,1	20,7	28,0
3	27,5	34,0	23,4
4	28,1	36,5	30,1
5	33,4	40,5	21,2
6	29,9	42,1	40,5
7	24,5	41,4	69,0
Total	172,2	227,7	32,3

	1	2	3	4	5	6	7	8	9	10	11	12	7 Ay/Mo	Total
2000	11.872	23.543	35.278	37.232	49.100	49.488	41.544	41.659	46.134	48.938	50.482	31.456	248.057	466.726
2001	8.443	8.377	7.479	10.195	13.562	14.408	13.326	11.361	6.927	7.035	12.319	18.006	75.790	131.438
2002	591	1.426	3.464	6.245	8.948	7.811	9.842	7.308	8.753	9.381	9.848	16.998	38.327	90.615
2003	6.309	5.486	8.555	11.107	15.965	16.329	14.764	16.896	23.772	30.615	25.777	51.461	78.515	227.036
2004	25.625	23.695	46.075	47.995	54.610	37.671	33.410	33.709	33.383	34.292	30.547	50.197	269.081	451.209
2005	11.595	21.012	38.129	36.206	38.480	40.900	38.969	38.648	36.410	34.960	37.841	65.447	225.291	438.597
2006	16.506	24.929	36.996	40.177	48.521	32.982	22.653	24.873	27.517	21.237	30.477	46.351	222.764	373.219
2007	13.186	17.212	24.336	25.204	29.067	30.126	28.246	28.469	27.662	32.569	39.643	61.745	167.377	357.465
2008	18.588	21.196	34.147	30.313	31.477	28.724	25.530	26.102	27.053	19.788	17.201	25.879	189.975	305.998
2009	13.173	14.492	40.622	36.202	44.188	41.019	16.637	22.537	52.162	13.828	17.781	57.178	206.333	369.819
2010	12.594	20.651	33.958	36.549	40.467	42.086	41.399	0	0	0	0	0	227.704	227.704

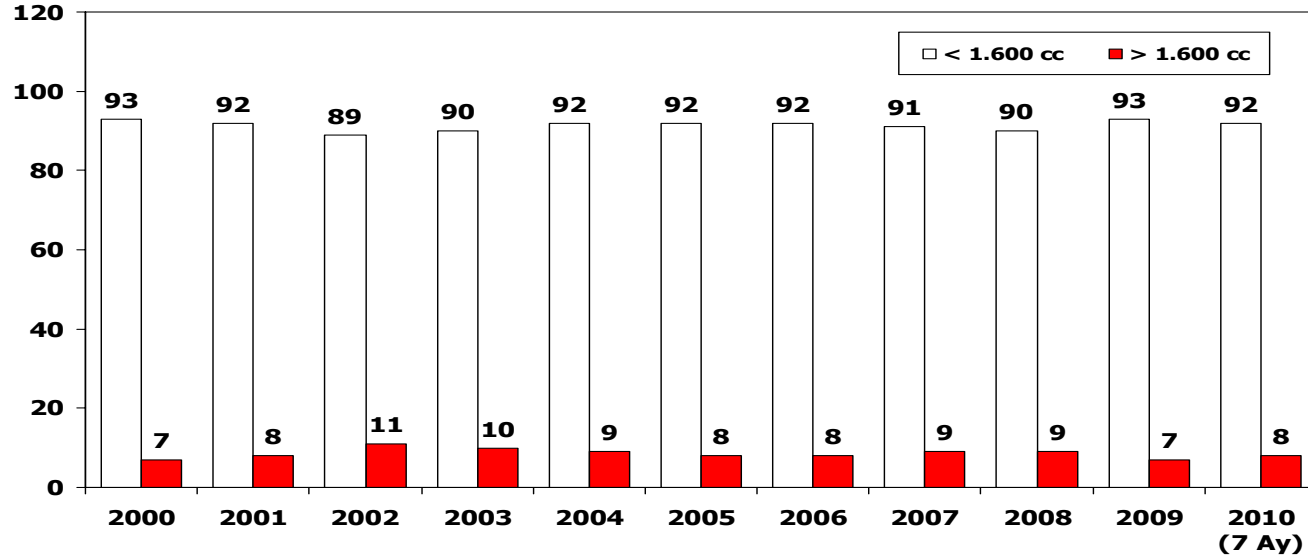


OTOMOBİL PAZARINDA AYLIK DEĞİŞİM (%)

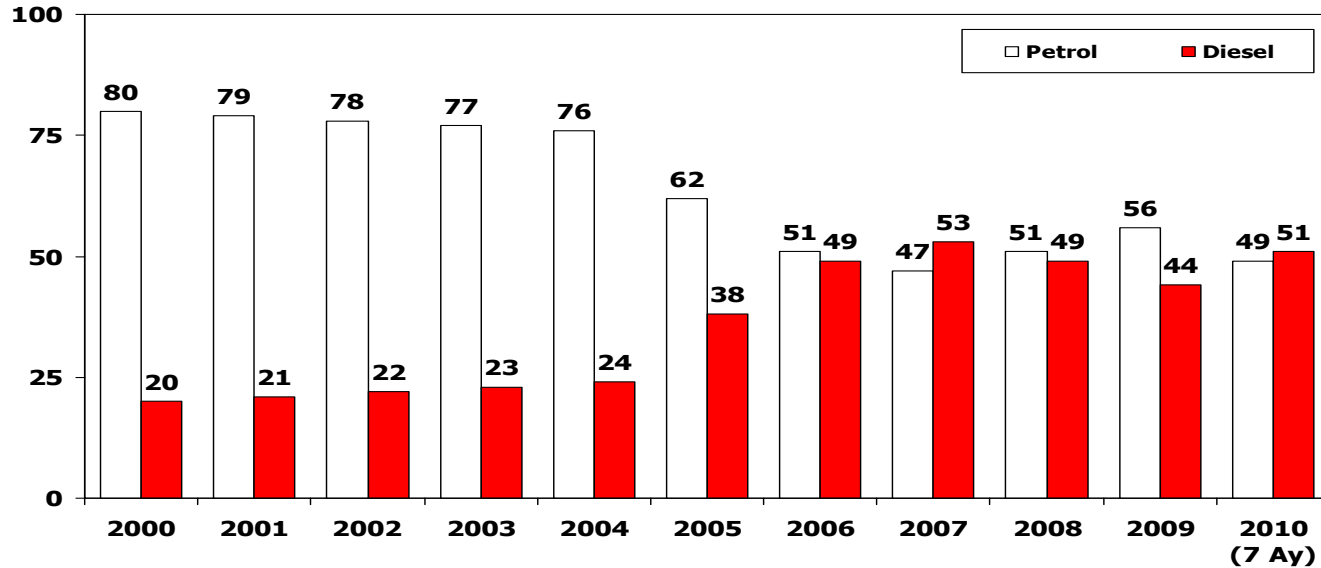
Monthly Change in P.Cars Market - %



Motor Hacmine Göre Otomobil Pazar Payı (%)
 Passenger Car Market Share According To Engine Size

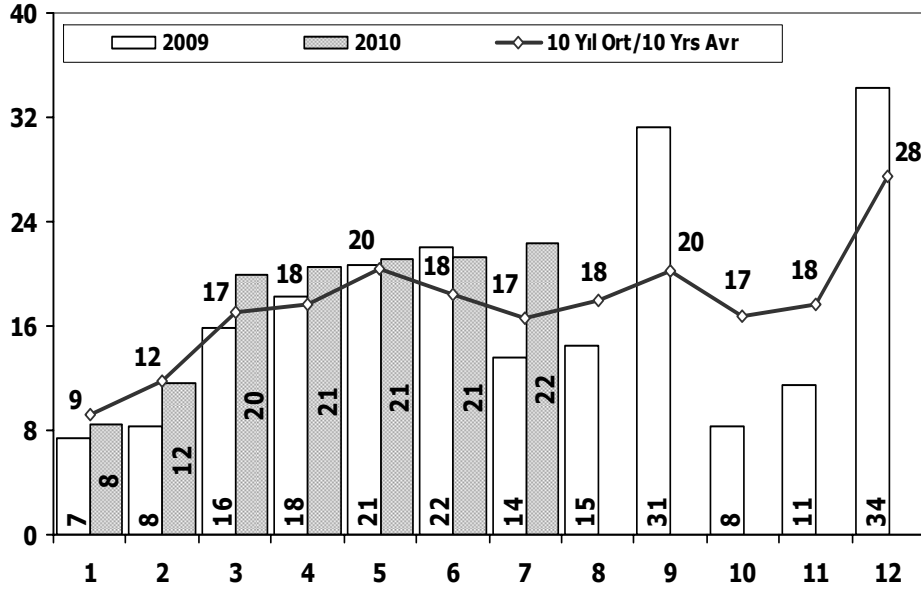


Yakıt Türüne Göre Otomobil Pazar Payı (%)
 Passenger Car Market Share According To The Fuel Type



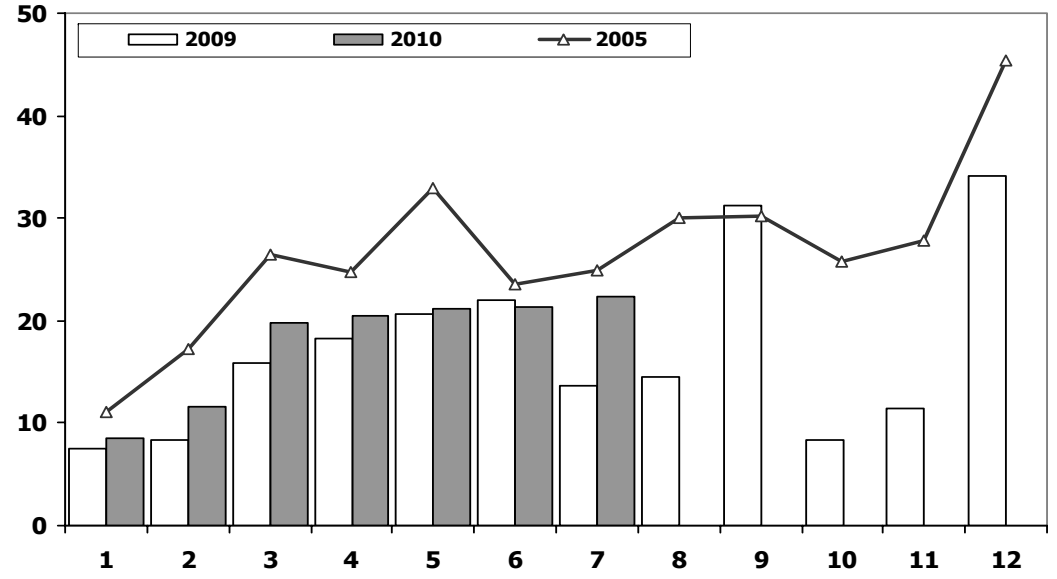


Ticari Araç Pazarının Analizi (x1000) CV Market Analysis (x1000)



Aylar / Months	10 Yil Ort. 10 Yrs Avr. (x1000)	2010 (x1000)	%
1	9,3	8,5	-8,7
2	11,8	11,7	-1,4
3	17,0	19,9	16,9
4	17,7	20,5	16,3
5	20,4	21,2	3,9
6	18,4	21,3	15,5
7	16,6	22,3	34,4
Total	111,2	125,3	12,7

Ticari Araç Pazarı (x1000) CV Total Market (Local + Imports) (x1000)

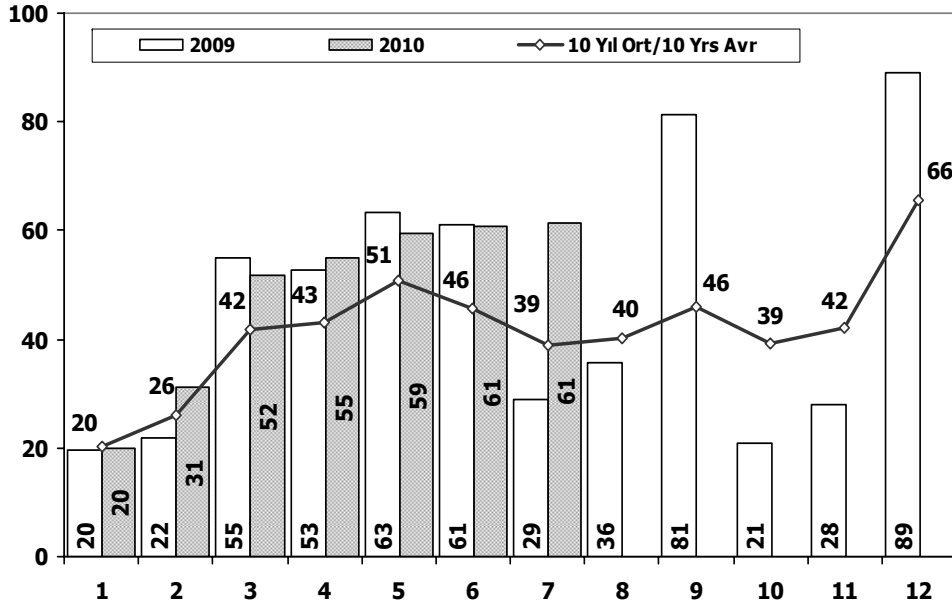


	1	2	3	4	5	6	7	8	9	10	11	12	7 Ay/Mo	Total
2000	6.774	11.915	13.059	15.139	17.800	18.099	15.370	18.801	20.466	21.684	20.738	9.950	98.156	189.795
2001	5.947	5.277	3.919	4.529	5.440	5.720	5.701	6.089	5.380	4.544	4.517	6.589	36.533	63.652
2002	1.657	2.884	4.601	5.947	7.859	7.837	6.667	7.430	7.433	9.005	8.630	13.877	37.452	83.827
2003	6.267	5.831	8.540	9.273	11.838	14.188	17.504	11.943	16.543	19.436	18.304	31.260	73.441	170.927
2004	12.996	15.694	25.648	29.061	30.024	25.557	23.897	22.713	26.046	21.861	21.690	34.873	162.877	290.060
2005	11.092	17.279	26.373	24.667	32.903	23.479	24.878	29.999	30.170	25.831	27.878	45.391	160.671	319.940
2006	13.463	19.717	28.094	28.676	34.768	25.221	17.384	22.501	22.112	18.568	25.421	36.371	167.323	292.296
2007	11.764	14.490	21.152	20.429	22.188	21.535	21.871	25.702	22.416	23.489	27.374	44.331	133.429	276.741
2008	15.204	16.925	22.667	20.654	20.150	20.669	19.162	20.490	19.776	15.359	10.951	18.539	135.431	220.546
2009	7.458	8.354	15.909	18.224	20.699	22.083	13.609	14.555	31.241	8.289	11.421	34.208	106.336	206.050
2010	8.461	11.667	19.872	20.531	21.160	21.300	22.320	0	0	0	0	0	125.311	125.311

* For the last 10 years, market was the highest in 2005

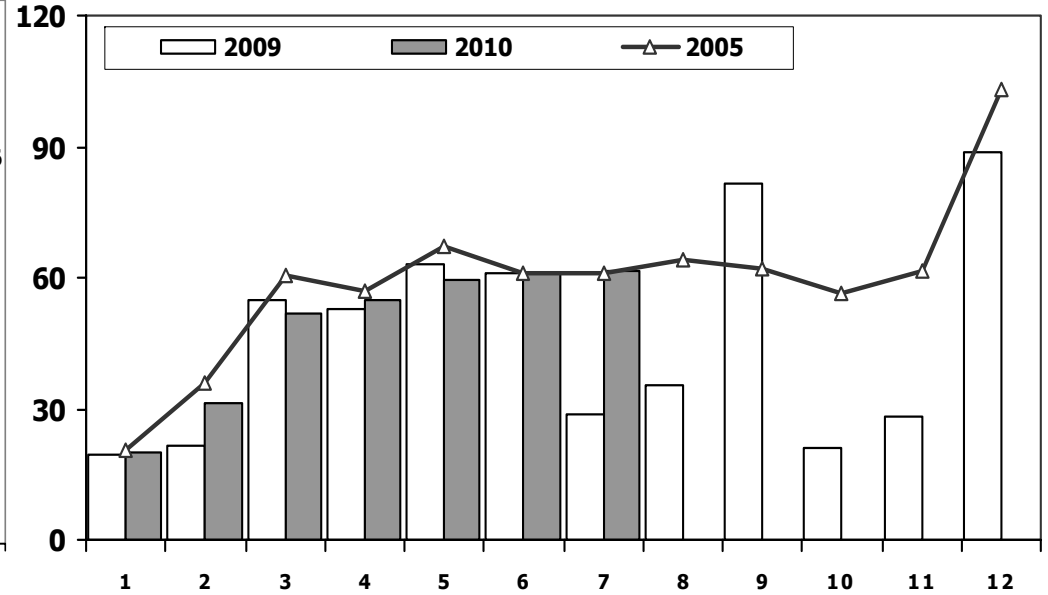


Hafif Arac Pazarının Analizi (x1000) LV Market Analysis (x1000)



Aylar / Months	10 Yil Ort. 10 Yrs Avr. (x1000)	20010 (x1000)	%
1	20,3	20,1	-1,1
2	26,0	31,2	20,0
3	41,7	51,8	24,0
4	43,0	54,9	27,8
5	50,8	59,4	16,8
6	45,7	60,9	33,2
7	39,0	61,3	57,3
Total	266,6	339,6	27,4

Hafif Arac Pazarı (x1000) LV Total Market (Local + Imports) (x1000)

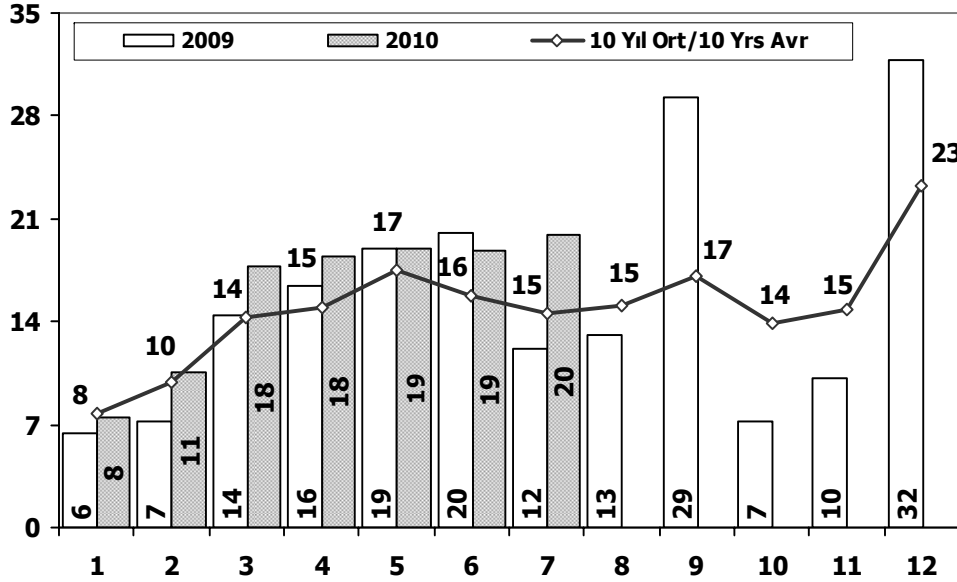


	1	2	3	4	5	6	7	8	9	10	11	12	7 Ay/Mo	Total
2000	17.386	33.236	45.509	49.621	63.453	64.034	54.244	56.639	62.673	66.717	67.344	39.381	327.483	620.237
2001	13.188	12.557	10.548	13.919	18.129	19.514	18.512	16.709	11.402	10.562	15.713	22.999	106.367	183.752
2002	1.764	3.641	7.109	11.007	15.461	14.337	15.472	13.302	14.599	16.531	16.657	27.569	68.791	157.449
2003	11.531	10.402	15.743	18.693	25.853	28.266	30.172	25.903	36.234	45.446	40.048	75.778	140.660	364.069
2004	36.352	37.079	67.144	73.075	80.290	59.730	54.816	52.876	55.609	53.000	49.200	78.924	408.486	698.095
2005	20.747	35.766	60.707	56.844	67.357	60.796	61.015	64.011	61.954	56.638	61.364	103.209	363.232	710.408
2006	27.917	40.938	60.052	64.038	78.229	54.355	37.251	43.767	46.109	36.542	51.867	76.787	362.780	617.852
2007	23.117	29.184	41.890	42.366	47.938	48.674	47.490	50.558	46.581	52.725	63.313	100.926	280.659	594.762
2008	31.527	35.251	53.649	47.701	48.598	46.324	42.156	43.670	43.932	32.884	26.253	42.078	305.206	494.023
2009	19.606	21.742	55.111	52.640	63.191	61.067	28.845	35.609	81.397	21.033	27.962	88.923	302.202	557.126
2010	20.095	31.172	51.769	54.946	59.377	60.896	61.345	0	0	0	0	0	339.600	339.600

* For the last 10 years, market was the highest in 2005

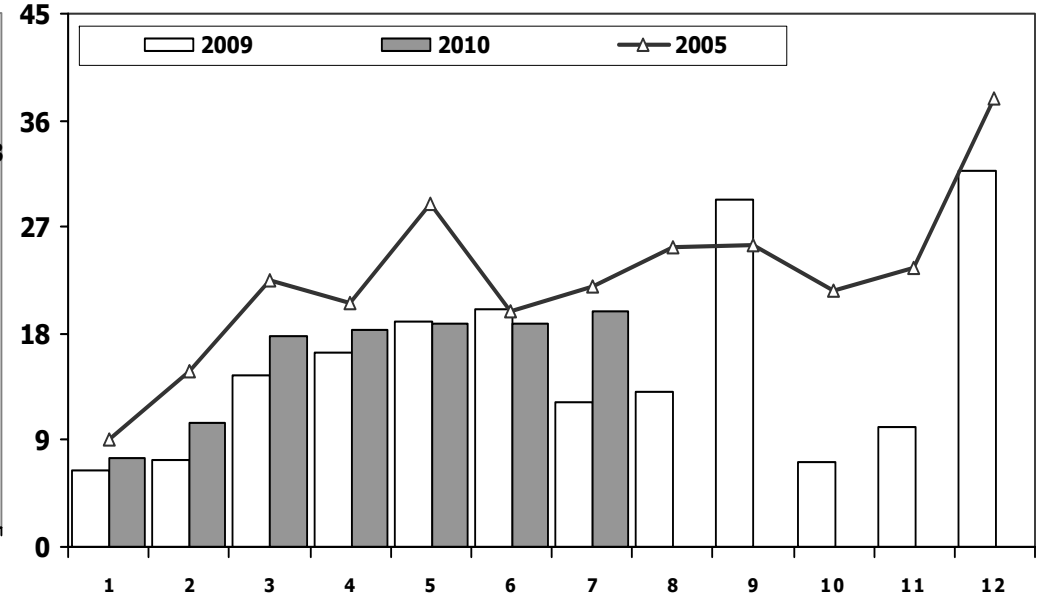


Hafif Ticari Arac Pazarının Analizi (x1000) LCV Market Analysis (x1000)



Aylar / Months	10 Yil Ort. 10 Yrs Avr. (x1000)	2010 (x1000)	%
1	7,7	7,5	-2,9
2	9,8	10,5	6,9
3	14,2	17,8	25,1
4	14,9	18,4	23,4
5	17,5	18,9	8,3
6	15,8	18,8	19,3
7	14,5	19,9	37,5
Total	94,4	111,9	18,5

Hafif Ticari Arac Pazarı (x1000) LCV Total Market (Local + Imports) (x1000)

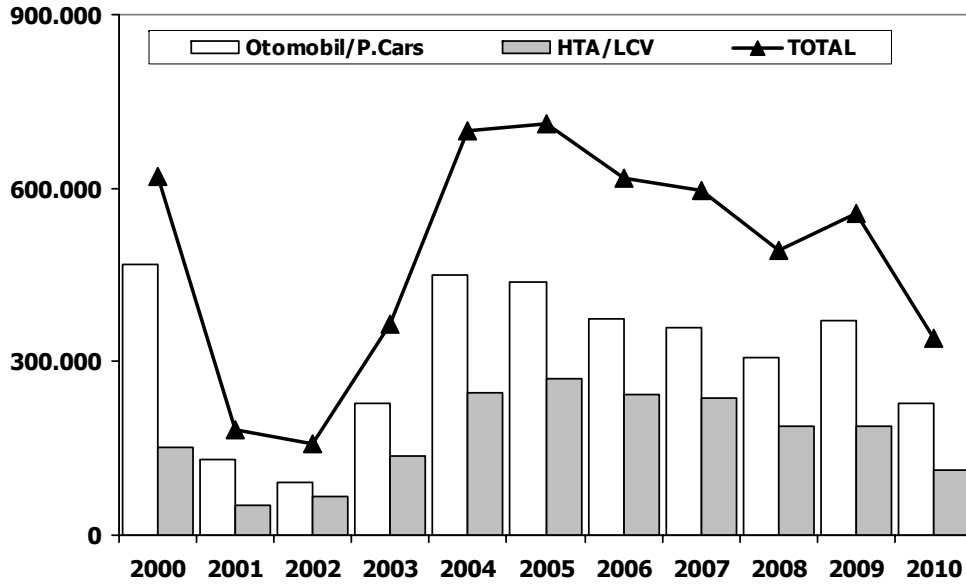


	1	2	3	4	5	6	7	8	9	10	11	12	7 Ay/Mo	Total
2000	5.514	9.693	10.231	12.389	14.353	14.546	12.700	14.980	16.539	17.779	16.862	7.925	79.426	153.511
2001	4.745	4.180	3.069	3.724	4.567	5.106	5.186	5.348	4.475	3.527	3.394	4.993	30.577	52.314
2002	1.173	2.215	3.645	4.762	6.513	6.526	5.630	5.994	5.846	7.150	6.809	10.571	30.464	66.834
2003	5.222	4.916	7.188	7.586	9.888	11.937	15.408	9.007	12.462	14.831	14.271	24.317	62.145	137.033
2004	10.727	13.384	21.069	25.080	25.680	22.059	21.406	19.167	22.226	18.708	18.653	28.727	139.405	246.886
2005	9.152	14.754	22.578	20.638	28.877	19.896	22.046	25.363	25.544	21.678	23.523	37.762	137.941	271.811
2006	11.411	16.009	23.056	23.861	29.708	21.373	14.598	18.894	18.592	15.305	21.390	30.436	140.016	244.633
2007	9.931	11.972	17.554	17.162	18.871	18.548	19.244	22.089	18.919	20.156	23.670	39.181	113.282	237.297
2008	12.939	14.055	19.502	17.388	17.121	17.600	16.626	17.568	16.879	13.096	9.052	16.199	115.231	188.025
2009	6.433	7.250	14.489	16.438	19.003	20.048	12.208	13.072	29.235	7.205	10.181	31.745	95.869	187.307
2010	7.501	10.521	17.811	18.397	18.910	18.810	19.946	0	0	0	0	0	111.896	111.896

* For the last 10 years, market was the highest in 2005

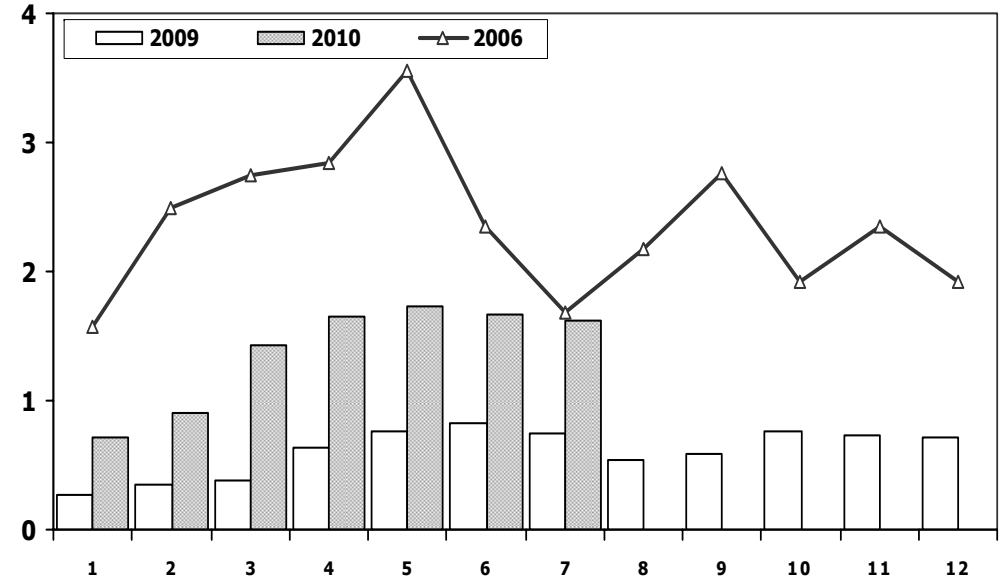


hafif Araç Pazarı (AYA < 3.5 Ton) (2000/2009-2010 Ocak-Temmuz)
Light Vehicle Market (GVW < 3.5 Ton) (2000/2009-2010 January-July)



	2000	2001	2002	2003	2004	2005	2006	2007	2008	2009	2010
Otomobil/P.Cars	466.726	131.438	90.615	227.036	451.209	438.597	373.219	357.465	305.998	369.819	227.704
HTA /LCV	153.511	52.314	66.834	137.033	246.886	271.811	244.633	237.297	188.025	187.307	111.896
TOTAL	620.237	183.752	157.449	364.069	698.095	710.408	617.852	594.762	494.023	557.126	339.600
HTA /LCV (%)	25	28	42	38	35	38	40	40	38	34	33

Traktör Pazarı (x1000)
F.Tractor Market (x1000)

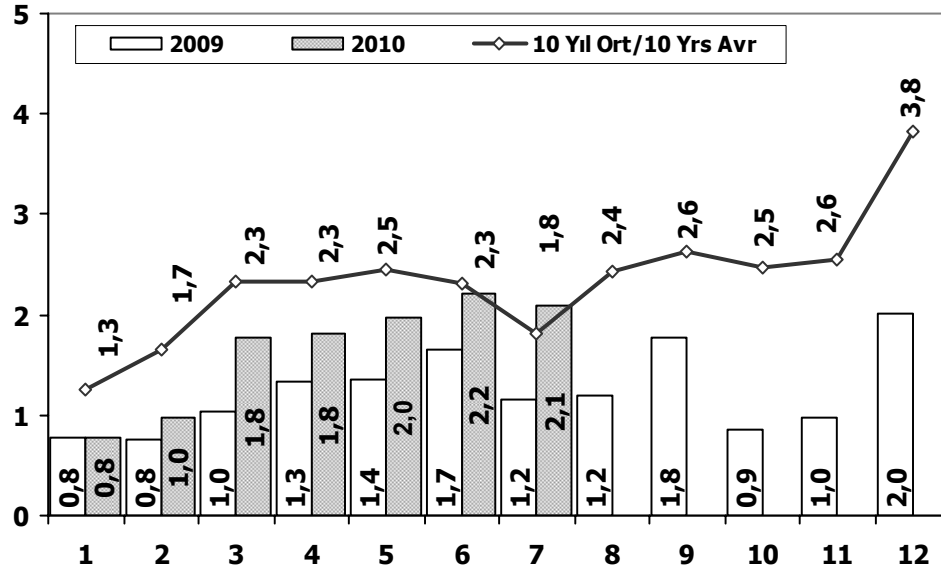


	1	2	3	4	5	6	7	8	9	10	11	12	7 Ay/Mo	Total
2000	777	1.037	2.266	2.913	3.507	2.746	1.959	2.324	3.345	3.108	2.669	1.146	15.205	27.797
2001	1.531	1.540	1.359	1.426	1.311	563	415	664	422	416	313	165	8.145	10.125
2002	291	401	380	585	435	508	561	546	747	628	560	680	3.161	6.322
2003	712	830	1.313	1.460	1.527	1.123	1.311	1.404	1.706	1.893	1.541	1.468	8.276	16.288
2004	1.946	1.874	2.909	3.260	2.863	2.816	1.988	2.209	2.509	1.989	2.198	1.364	17.656	27.925
2005	1.026	1.636	2.001	2.599	2.569	2.780	2.148	2.819	2.567	2.477	2.297	2.089	14.759	27.008
2006	1.578	2.493	2.746	2.841	3.561	2.356	1.685	2.177	2.756	1.915	2.353	1.925	17.260	28.386
2007	1.812	1.778	2.063	2.107	2.266	1.853	1.653	2.065	2.372	2.239	2.231	1.602	13.532	24.041
2008	1.510	1.427	1.933	1.692	1.689	1.592	1.275	924	904	609	707	359	11.118	14.621
2009	267	344	388	638	759	828	741	534	586	765	725	715	3.965	7.290
2010	714	903	1.432	1.653	1.736	1.673	1.613	0	0	0	0	0	9.724	9.724

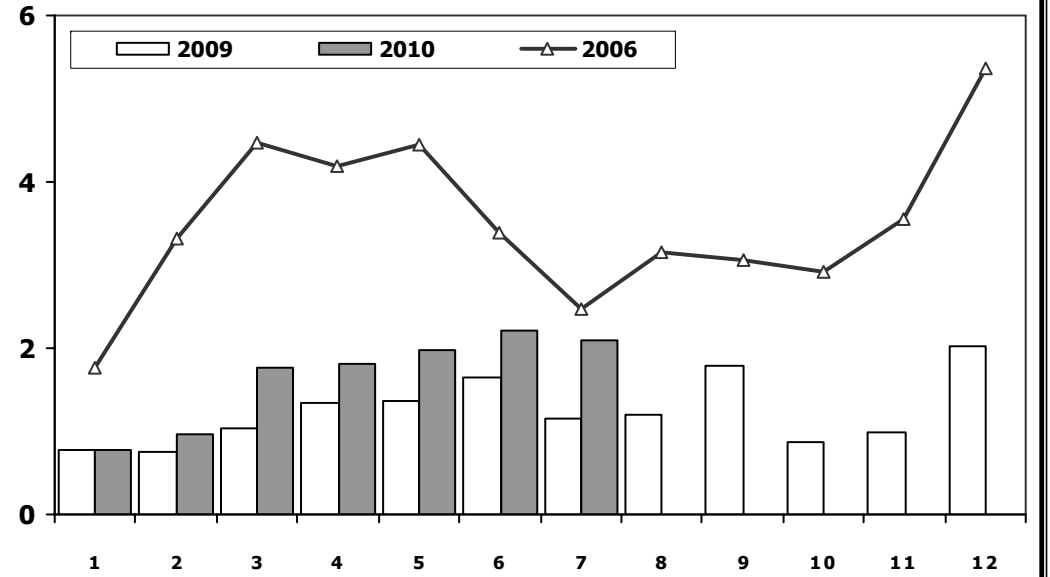
* For the last 10 years, market was the highest in 2006



Kamyon Pazarının Analizi (x1000) AYA > 5 Ton Truck Market Analysis (x1000) GVW > 5 Ton



Kamyon Pazarı (x1000) AYA > 5 Ton Truck Market (x1000) GVW > 5 Ton



Aylar / Months	10 Yil Ort. 10 Yrs Avr. (x1000)	2010 (x100)	%
1	1,3	0,8	-38,0
2	1,7	1,0	-41,4
3	2,3	1,8	-24,2
4	2,3	1,8	-22,6
5	2,5	2,0	-20,1
6	2,3	2,2	-4,4
7	1,8	2,1	14,9
Total	14,2	11,6	-18,2

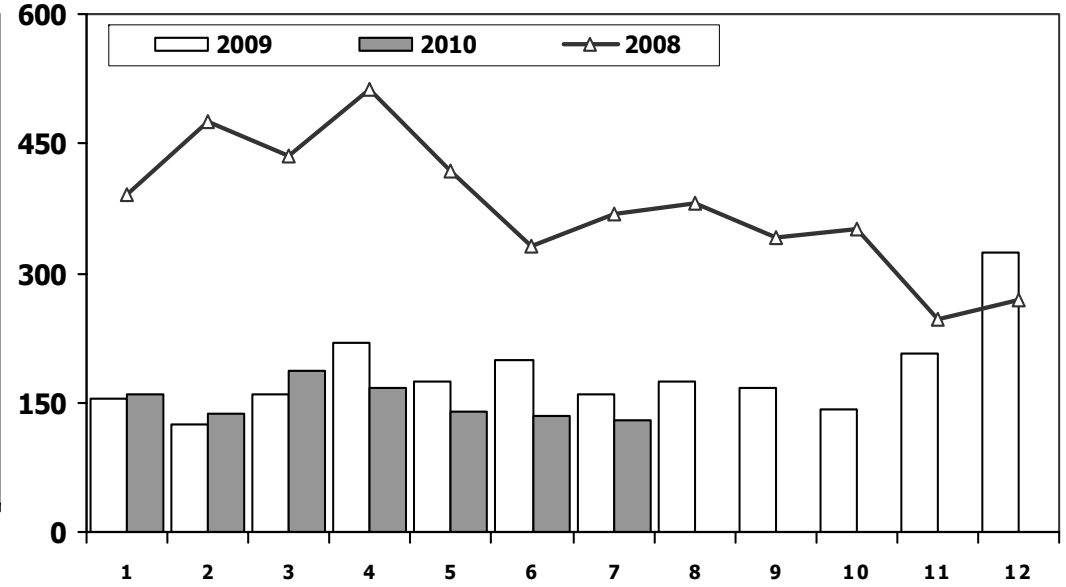
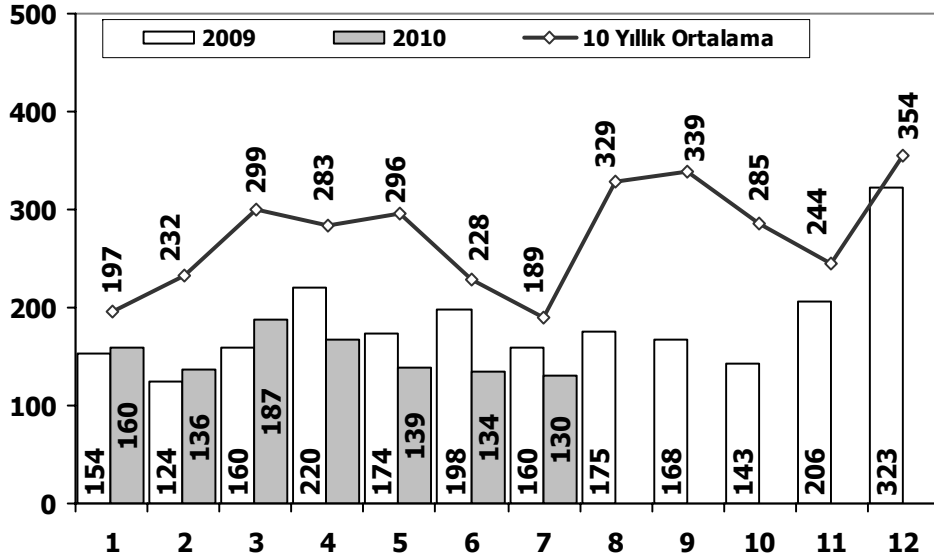
	1	2	3	4	5	6	7	8	9	10	11	12	7 Ay/Mo	Total
2000	955	1.697	2.250	2.209	2.790	2.903	2.125	3.048	3.107	3.235	3.386	1.740	14.929	29.445
2001	950	942	725	709	793	498	420	604	680	795	975	1.383	5.037	9.474
2002	403	532	824	1.048	1.157	1.199	927	1.300	1.403	1.666	1.637	2.932	6.090	15.028
2003	771	773	1.123	1.494	1.668	2.008	1.933	2.490	3.563	4.147	3.720	6.406	9.770	30.096
2004	1.863	1.949	3.983	3.352	3.651	3.118	2.234	2.897	3.285	2.727	2.629	5.517	20.150	37.205
2005	1.693	2.186	3.288	3.484	3.413	3.147	2.504	4.028	4.043	3.708	3.918	6.570	19.715	41.982
2006	1.767	3.310	4.467	4.180	4.449	3.398	2.472	3.142	3.052	2.926	3.550	5.358	24.043	42.071
2007	1.554	2.055	3.065	2.940	2.865	2.613	2.372	3.145	2.988	2.886	3.258	4.444	17.464	34.185
2008	1.797	2.309	2.621	2.578	2.459	2.526	2.067	2.377	2.390	1.790	1.512	1.834	16.357	26.260
2009	771	759	1.034	1.342	1.355	1.651	1.156	1.205	1.780	866	981	2.015	8.068	14.915
2010	777	968	1.772	1.807	1.966	2.205	2.093	0	0	0	0	0	11.588	11.588

* For the last 10 years, market was the highest in 2006



Midibüs Pazarının Analizi (7-9 mt / 25-35 Kişilik) Midibus Market Analysis (7-9 mt / 25-35 Passengers)

Midibüs Pazarı (7-9 mt / 25-35 Kişilik Midibüs) Midibus Market (7-9 mt / 25-35 Passengers)



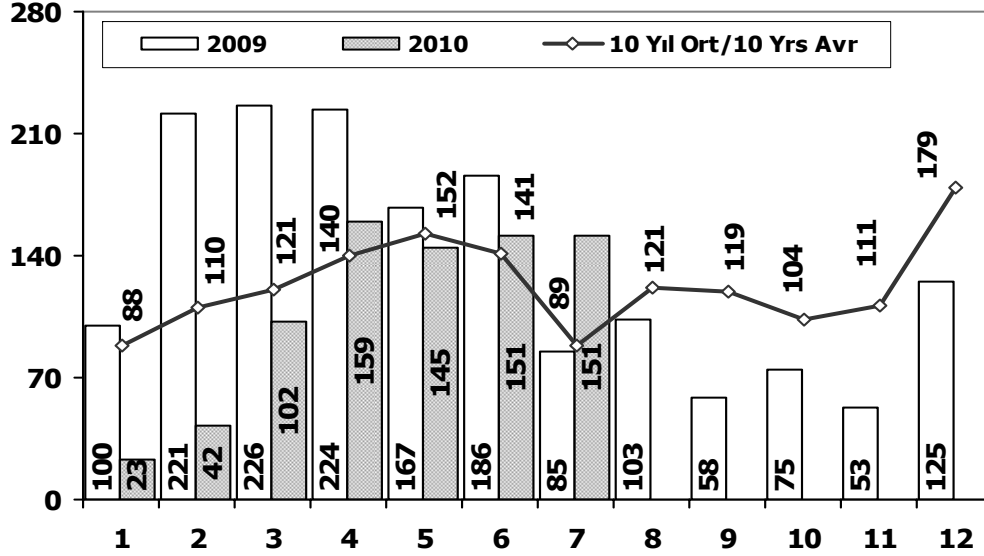
Aylar / Months	10 Yıl Ort. 10 Yrs Avr.	2010	%
1	197	160	-19
2	232	136	-41
3	299	187	-37
4	283	168	-41
5	296	139	-53
6	228	134	-41
7	189	130	-31
Total	1.725	1.054	-39

	1	2	3	4	5	6	7	8	9	10	11	12	7 Ay/Mo	Total
2000	204	374	413	369	399	350	298	505	585	452	296	91	2.407	4.336
2001	124	87	85	76	43	77	60	110	201	208	129	131	552	1.331
2002	47	99	86	100	125	106	105	94	141	171	120	300	668	1.494
2003	220	109	188	106	158	161	103	322	349	330	212	436	1.045	2.694
2004	233	226	381	431	524	237	154	531	445	331	319	551	2.186	4.363
2005	182	258	432	393	439	269	252	459	436	329	328	574	2.225	4.351
2006	207	297	406	388	381	266	230	353	322	253	305	401	2.175	3.809
2007	207	272	404	238	302	283	164	365	399	279	283	465	1.870	3.661
2008	391	476	436	512	419	331	368	380	341	352	246	270	2.933	4.522
2009	154	124	160	220	174	198	160	175	168	143	206	323	1.190	2.205
2010	160	136	187	168	139	134	130	0	0	0	0	0	1.054	1.054

* For the last 10 years, market was the highest in 2008

Otobüs Pazarının Analizi

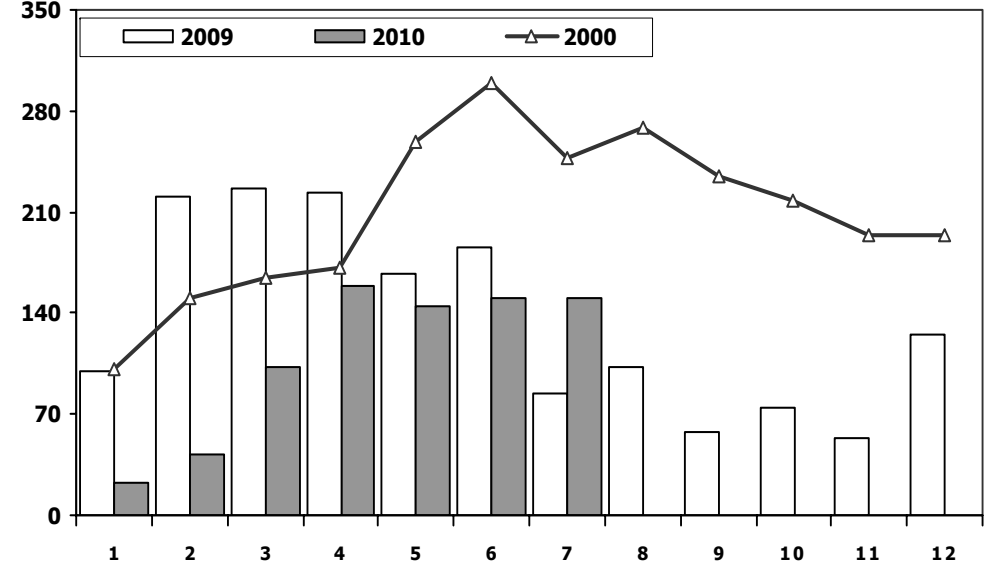
Bus Market Analysis



Aylar / Months	10 Yil Ort. / 10 Yrs Avr.	2010	%
1	88	23	-74
2	110	42	-62
3	121	102	-16
4	140	159	13
5	152	145	-5
6	141	151	7
7	89	151	70
Total	842	773	-8

Otobüs Pazarı

Bus Market

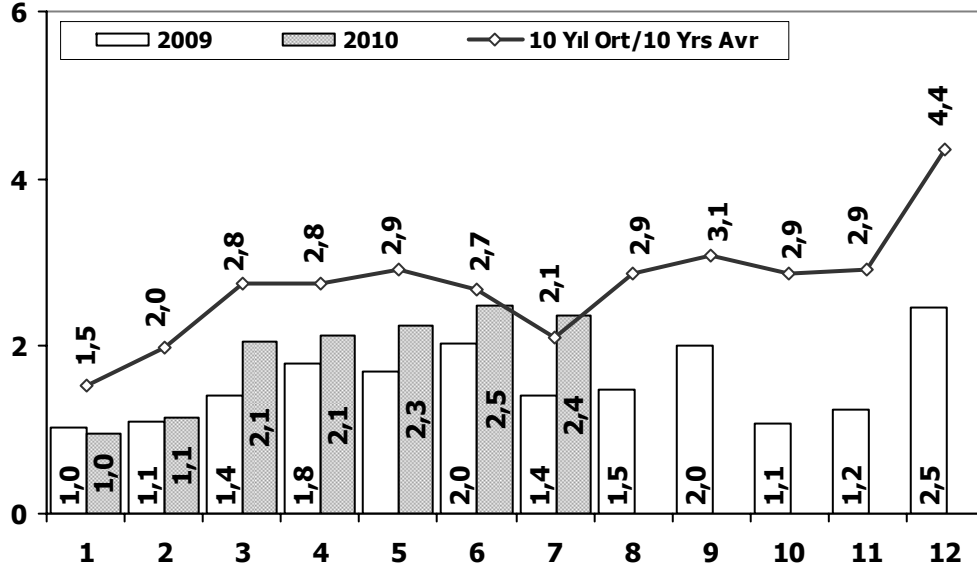


	1	2	3	4	5	6	7	8	9	10	11	12	7 Ay/Mo	Total
2000	101	151	165	172	258	300	247	268	235	218	194	194	1.394	2.503
2001	128	68	40	20	37	39	35	27	24	14	19	82	367	533
2002	34	38	46	37	64	6	5	42	43	18	64	74	230	471
2003	54	33	41	87	124	82	60	124	169	128	101	101	481	1.104
2004	173	135	215	198	169	143	103	118	90	95	89	78	1.136	1.606
2005	65	81	75	152	174	167	76	149	147	116	109	485	790	1.796
2006	78	101	165	247	230	184	84	112	146	84	176	176	1.089	1.783
2007	72	191	129	89	150	91	91	103	110	168	163	241	813	1.598
2008	77	85	108	176	151	212	101	165	166	121	141	236	910	1.739
2009	100	221	226	224	167	186	85	103	58	75	53	125	1.209	1.623
2010	23	42	102	159	145	151	151	0	0	0	0	0	773	773

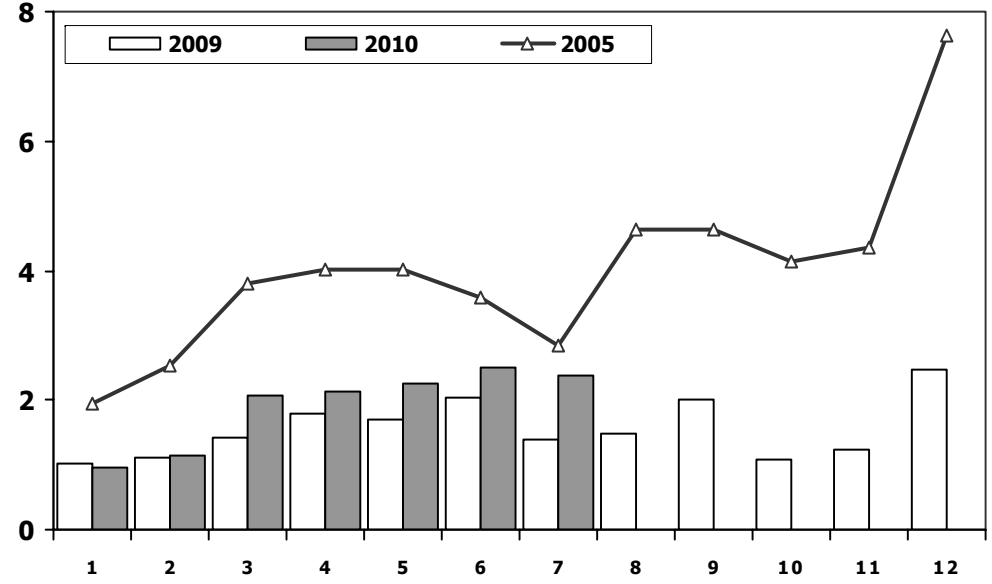
* For the last 10 years, market was the highest in 2000



Ağır Ticari Araç Pazarının Analizi (x1000) HCV Market Analysis (x1000)



Ağır Ticari Araç Pazarı (x1000) HCV Market (x1000)



Aylar / Months	10 Yil Ort. 10 Yrs Avr. (x1000)	2010 (x1000)	%
1	1,5	1,0	-37,6
2	2,0	1,1	-42,5
3	2,8	2,1	-25,3
4	2,8	2,1	-22,6
5	2,9	2,3	-22,6
6	2,7	2,5	-6,9
7	2,1	2,4	13,1
Total	16,7	13,4	-19,8

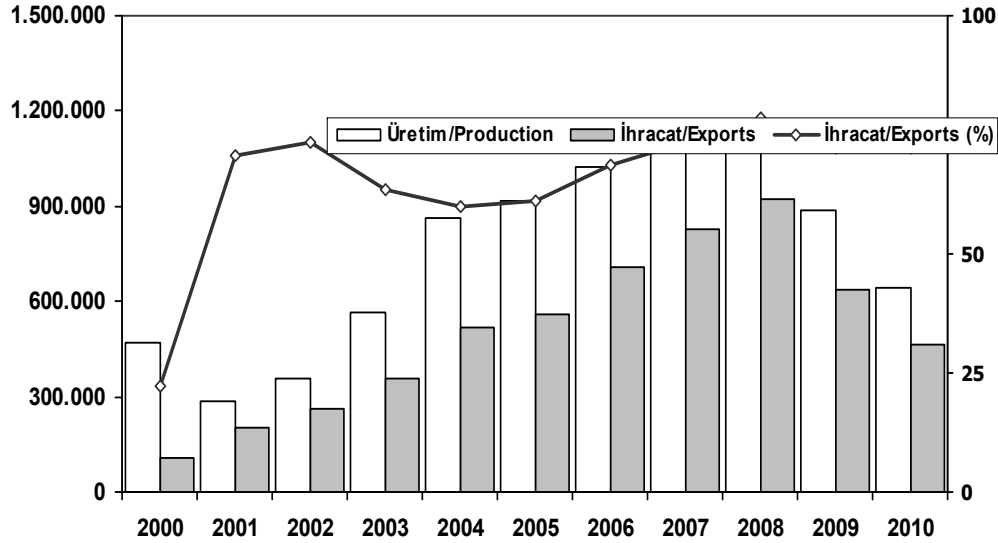
	1	2	3	4	5	6	7	8	9	10	11	12	7 Ay/Mo	Total
2000	1.260	2.222	2.828	2.750	3.447	3.553	2.670	3.821	3.927	3.905	3.876	2.025	18.730	36.284
2001	1.202	1.097	850	805	873	614	515	741	905	1.017	1.123	1.596	5.956	11.338
2002	484	669	956	1.185	1.346	1.311	1.037	1.436	1.587	1.855	1.821	3.306	6.988	16.993
2003	1.045	915	1.352	1.687	1.950	2.251	2.096	2.936	4.081	4.605	4.033	6.943	11.296	33.894
2004	2.269	2.310	4.579	3.981	4.344	3.498	2.491	3.546	3.820	3.153	3.037	6.146	23.472	43.174
2005	1.940	2.525	3.795	4.029	4.026	3.583	2.832	4.636	4.626	4.153	4.355	7.629	22.730	48.129
2006	2.052	3.708	5.038	4.815	5.060	3.848	2.786	3.607	3.520	3.263	4.031	5.935	27.307	47.663
2007	1.833	2.518	3.598	3.267	3.317	2.987	2.627	3.613	3.497	3.333	3.704	5.150	20.147	39.444
2008	2.265	2.870	3.165	3.266	3.029	3.069	2.536	2.922	2.897	2.263	1.899	2.340	20.200	32.521
2009	1.025	1.104	1.420	1.786	1.696	2.035	1.401	1.483	2.006	1.084	1.240	2.463	10.467	18.743
2010	960	1.146	2.061	2.134	2.250	2.490	2.374	0	0	0	0	0	13.415	13.415

* For the last 10 years, market was the highest in 2005



İhracat/Üretim (2000/2009-2010 Ocak-Temmuz)

Exports/Production (2000/2009-2010 January-July)



	2000	2001	2002	2003	2004	2005	2006	2007	2008	2009	2010
Üretim/Production	468.381	285.737	357.405	563.450	864.073	916.062	1.026.427	1.132.951	1.171.917	884.466	645.022
İhracat/Exports	104.744	202.158	261.934	358.745	518.595	561.078	706.402	829.879	920.763	637.855	466.532
İhracat/Exports (%)	22	71	73	64	60	61	69	73	79	72	72

Taşıt Araçları İhracatı (2007/2010 Ocak-Temmuz)

Motor Vehicle Exports (2007/2010 January-July)

SEKTÖR/SECTOR	2007	2008	2009	2009 7 Ay 7 Mo	2010 7 Ay 7 Mo	2010/2009 (%)
OTOMOBİL / P.Cars	504.353	525.301	388.994	223.044	276.131	24
TİCARİ ARAÇLAR / CV	316.017	384.969	239.976	118.771	183.810	55
* Kamyonet/Pick-Up	295.585	366.646	231.260	113.978	179.750	58
* Minibüs/Minibus	2.695	891	1.271	561	367	-35
* Kamyon/Truck	9.398	9.742	1.910	1.236	1.208	-2
* Midibüs/Midibus	2.987	2.180	1.065	452	510	13
* Otobüs/Bus	5.352	5.510	4.470	2.544	1.975	-22
TAŞIT ARAÇLARI /MV TOTAL	820.370	910.270	628.970	341.815	459.941	35
TRAKTÖR/F.TRACTOR	9.509	10.493	8.885	5.054	6.591	30
TOTAL	829.879	920.763	637.855	346.869	466.532	34

Otomotiv Ana ve Yan Sanayii İhracatı (ABD \$)

CBU and CKD Exports - \$

SEKTÖR/SECTOR	2008 Toplam (Total)	2009 Toplam (Total)	2009 7 Ay (7 Months)	2010 7 Ay (7 Months)	2010/2009 (%)
Toplam Ana Sanayi/Total Vehicle Industry	14.886.300.371	9.612.631.033	5.197.996.332	6.356.485.209	22
* Otomobil (P. Cars)	7.505.740.617	6.092.424.656	3.260.739.531	3.860.801.339	18
* Otobüs (Bus)	1.238.342.457	771.886.548	415.783.755	332.474.298	-20
* Diğerleri (Others)	6.142.217.297	2.748.319.829	1.521.473.046	2.163.209.571	42
Toplam Yan Sanayi/Total Component Industry	7.015.666.404	4.919.345.973	2.664.874.685	3.046.166.120	14
* Aksam ve Parça / Spare Parts and Components	5.806.202.045	3.939.201.533	2.128.420.925	2.441.545.716	15
* İç ve Dış Lastik / Tyres	976.029.024	826.346.700	455.473.087	534.463.115	17
* Akümülatör / Batteries	127.902.222	83.818.491	42.912.974	32.819.028	-24
* Emniyet Camı/ Safety Glasses	105.533.113	69.979.249	38.067.699	37.338.261	-2
Toplam/Total	21.901.966.775	14.531.977.006	7.862.871.017	9.402.651.329	20

Kaynak: Otomotiv Endüstrisi İhracatçıları Birliği – Orta Anadolu İhracatçı Birlikleri



Firma Bazında İhracat (Adet)
Export Of member Companies (Unit)

FİRMALAR Companies	2008	2009	Ocak-Temmuz 7 Months	
			2009	2010
OYAK RENAULT	252.232	222.278	127.763	157.109
TOFAŞ	209.443	168.353	92.689	124.635
FORD OTOSAN	217.876	128.388	58.565	95.140
TOYOTA	119.586	69.097	40.171	42.587
HYUNDAI ASSAN	61.000	17.136	7.616	19.094
KARSAN	482	7.287	3.999	11.189
HONDA TÜRKİYE	34.926	9.172	6.874	6.682
TÜRK TRAKTÖR	9.648	8.808	5.054	6.366
M. BENZ TÜRK	9.083	3.317	1.995	1.831
TEMSA	1.245	1.114	672	459
MAN TÜRKİYE	1.538	1.180	668	455
A.I.O.S.	1.042	565	201	337
B.M.C.	1.189	582	362	247
HATTAT	53	77	0	225
OTOKAR	619	501	240	176
GENEL TOPLAM	920.763	637.855	346.869	466.532

Kaynak: OSD

Sektör Bazında İhracat (\$)
Exports on Sectorial Basis

Sıra No (Rank)	Sektörler Sectors	2009 Toplam (Total)	7 Ay (7 Months)			
			2009	2010	2010/2009 (%)	2010 (%) Pay (Share)
1	Otomotiv Endüstrisi *	16.876.610	8.101.527	10.148.165	25,3	15,8
2	Hazır giyim ve Konfeksiyon	13.297.909	7.423.719	8.348.497	12,5	13,0
3	Kimyevi Maddeler ve Mamülleri	9.664.715	5.084.110	6.949.727	36,7	10,8
4	Demir Çelik Ürünleri	11.030.486	6.548.889	6.872.079	4,9	10,7
5	Elektrik-Elektronik ve Makina	8.561.778	4.385.282	5.265.604	20,1	8,2
6	Makine ve Aksamları	5.607.072	3.193.330	3.566.777	11,7	5,6
7	Tekstil ve Hammaddeleri	5.514.480	2.984.631	3.650.583	22,3	5,7
9	Demir ve Demir Dışı Metaller	4.494.096	2.366.466	3.228.406	36,4	5,0
10	Hububat, Bakliyat, Yağlı Tohumlar	3.648.365	2.037.726	2.324.437	14,1	3,6
11	Çimento ve Toprak Ürünleri	3.085.283	1.747.767	1.880.683	7,6	2,9
12	Madencilik Ürünleri	2.507.373	1.254.175	2.080.193	65,9	3,2
13	Ağaç Mamülleri, Orman Ürünleri	2.501.354	1.322.003	1.603.953	21,3	2,5
14	Yaş Meyve ve Sebze	1.955.040	1.062.629	1.216.399	14,5	1,9
15	Fındık ve Mamülleri	1.183.971	467.397	690.787	47,8	1,1
16	Kuru Meyve ve Mamülleri	1.111.730	546.954	549.914	0,5	0,9
17	Hali	1.086.295	559.536	657.724	17,5	1,0
18	Deri ve Deri Mamülleri	1.064.715	557.133	661.762	18,8	1,0
19	Meyve Sebze Mamülleri	1.034.853	540.417	581.932	7,7	0,9
20	Değerli Maden ve Mücevherat	978.469	535.005	642.258	20,0	1,0
21	Canlı Hayvan, Su Ürünleri ve Mam.	828.729	466.541	518.917	11,2	0,8
22	Tütün	737.821	342.632	322.437	-5,9	0,5
23	Zeytin ve Zeytinyağ	209.359	111.993	120.986	8,0	0,2
24	Kesme Çiçek	49.150	30.561	35.913	17,5	0,1
25	Diğer Sanayi Ürünleri	45.019	26.583	40.899	53,9	0,1
26	Gemi ve Yat	***	1.073.029	823.642	-23,2	1,3
	TOPLAM	101.628.999	56.778.184	64.238.856	13,1	100,0

Kaynak: TİM

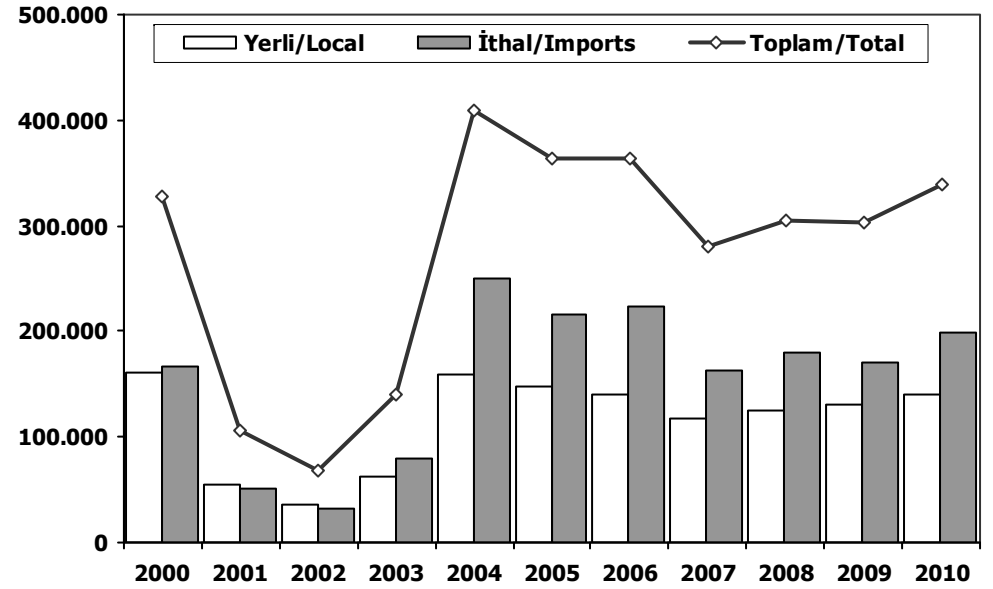
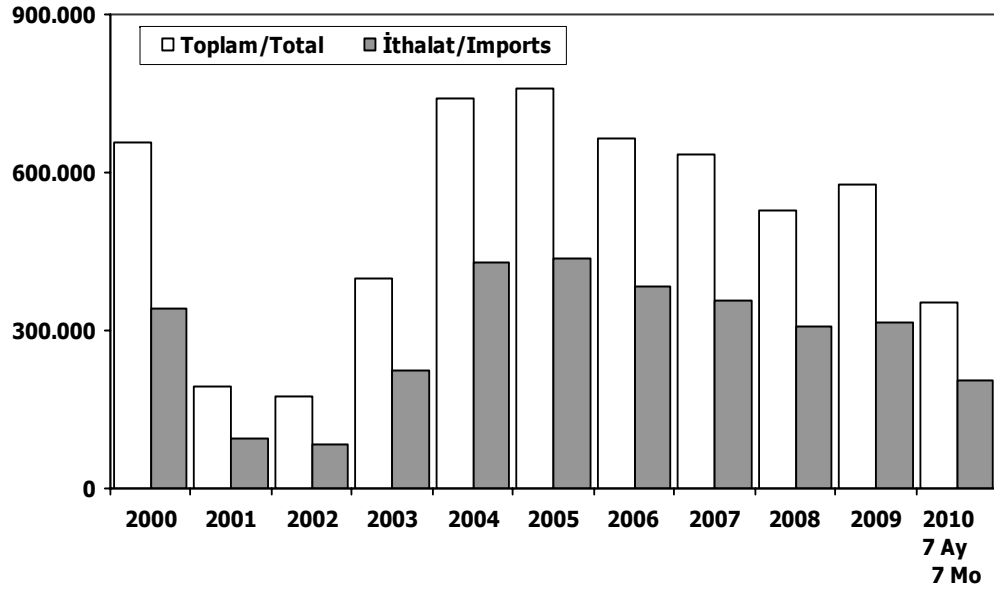
First 5 Sectors:

- 1- Transport Vehicle and Component Industry
- 2- Ready Wear and Confection
- 3- Chemical Articles and Products
- 4- Iron Steel Products
- 5- Electric-Electronic and Machine



Toplam Pazar (Otomobil+T.Araç) Total Market (P.Cars+C.V)

Hafif Araçlar Pazarı (2000-2010 Ocak-Temmuz) LV Market (2000-2010 January-July)

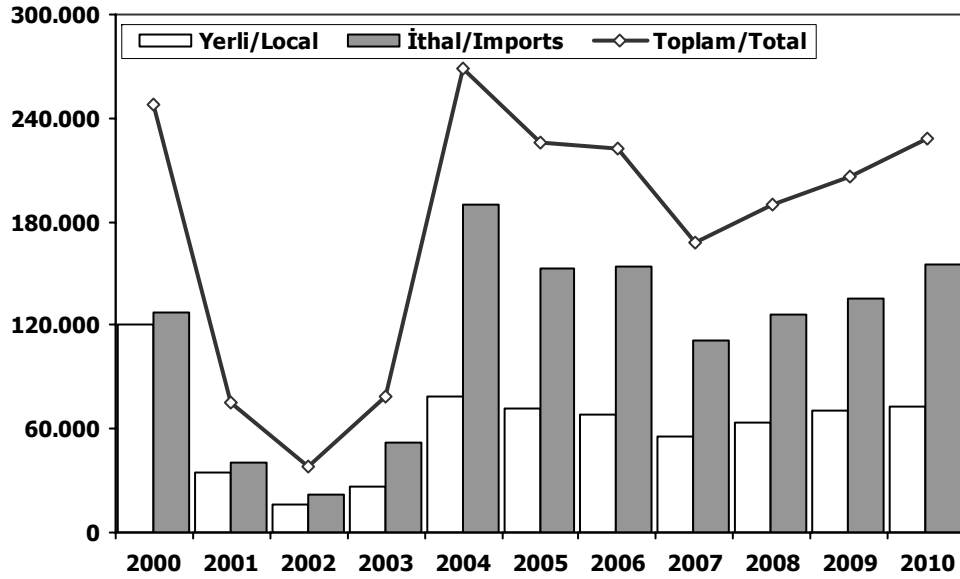


	2000	2001	2002	2003	2004	2005	2006	2007	2008	2009	2009 7 Ay 7 Mo	2010 7 Ay 7 Mo
Toplam/Total	656.521	195.090	174.442	397.963	741.269	758.537	665.515	634.206	526.544	575.869	312.669	353.015
İthalat/Imports	341.664	93.887	83.027	222.984	430.204	436.033	382.460	355.752	306.087	313.921	173.699	203.333
İthalat/Imports (%)	52	48	48	56	58	57	57	56	58	55	56	58

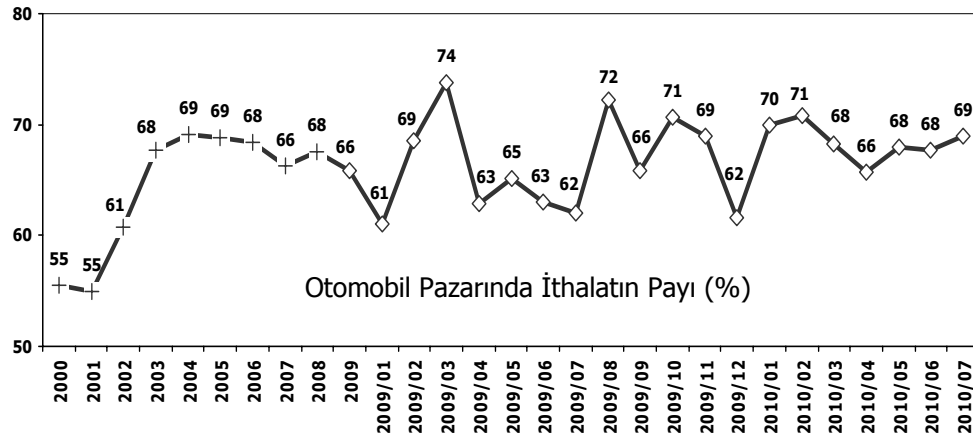
	2000	2001	2002	2003	2004	2005	2006	2007	2008	2009	2010
Yerli/Local	160.067	54.467	36.158	62.019	159.219	147.548	140.173	117.358	124.579	130.914	140.328
İthal/Imports	167.416	51.900	32.633	78.641	249.267	215.684	222.607	163.301	180.627	171.288	199.272
Toplam/Total	327.483	106.367	68.791	140.660	408.486	363.232	362.780	280.659	305.206	302.202	339.600
İthalat/Imports (%)	51	49	47	56	61	59	61	58	59	57	59



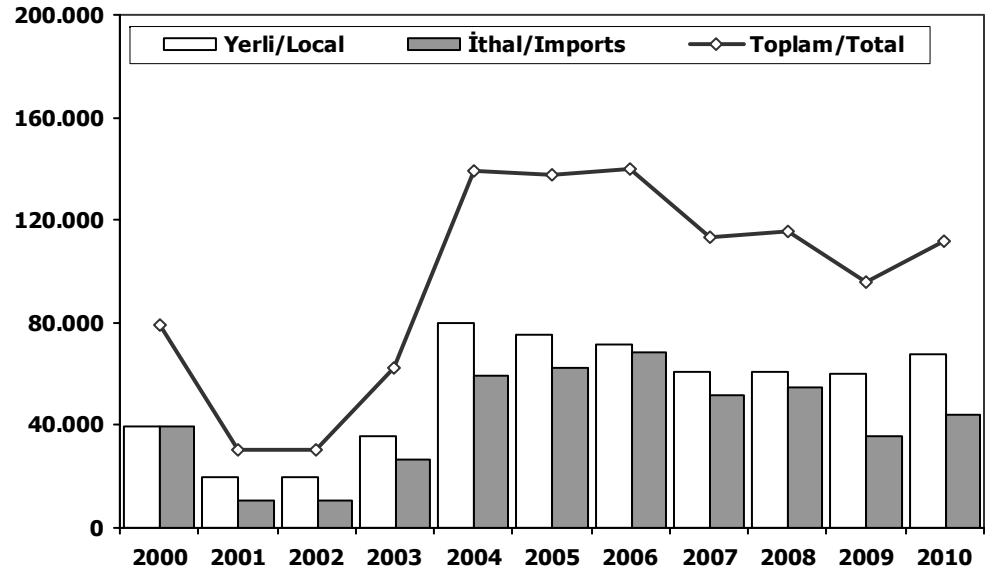
Otomobil Pazarı (2000-2010 Ocak-Temmuz) P.Cars Market (2000-2010 January-July)



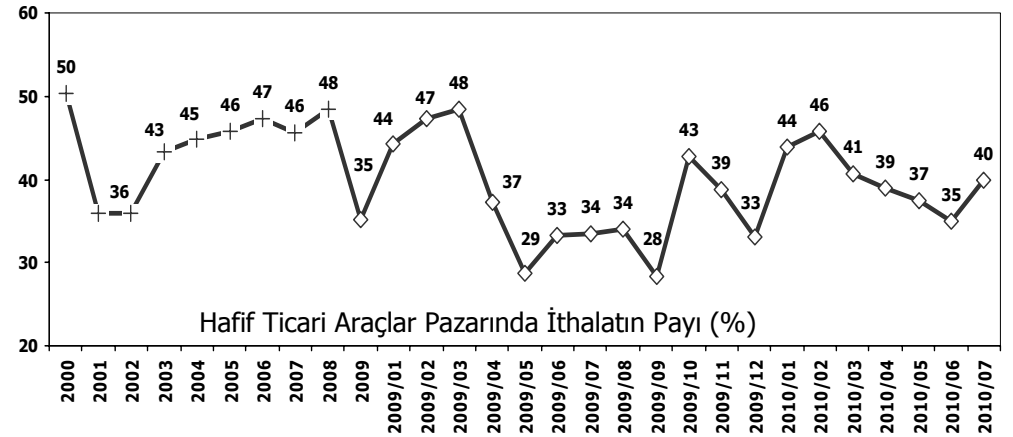
	2000	2001	2002	2003	2004	2005	2006	2007	2008	2009	2010
Yerli/Local	120.262	34.734	16.615	26.448	79.090	71.967	68.535	56.142	64.013	70.658	72.553
İthal/Imports	127.795	41.056	21.712	52.067	189.991	153.324	154.229	111.235	125.962	135.675	155.151
Toplam/Total	248.057	75.790	38.327	78.515	269.081	225.291	222.764	167.377	189.975	206.333	227.704
İthalat/Imports (%)	52	54	57	66	71	68	69	66	66	66	68



Hafif Ticari Araçlar Pazarı (2000-2010 Ocak-Temmuz) Light Commercial Vehicle Market (2000-2010 January-July)

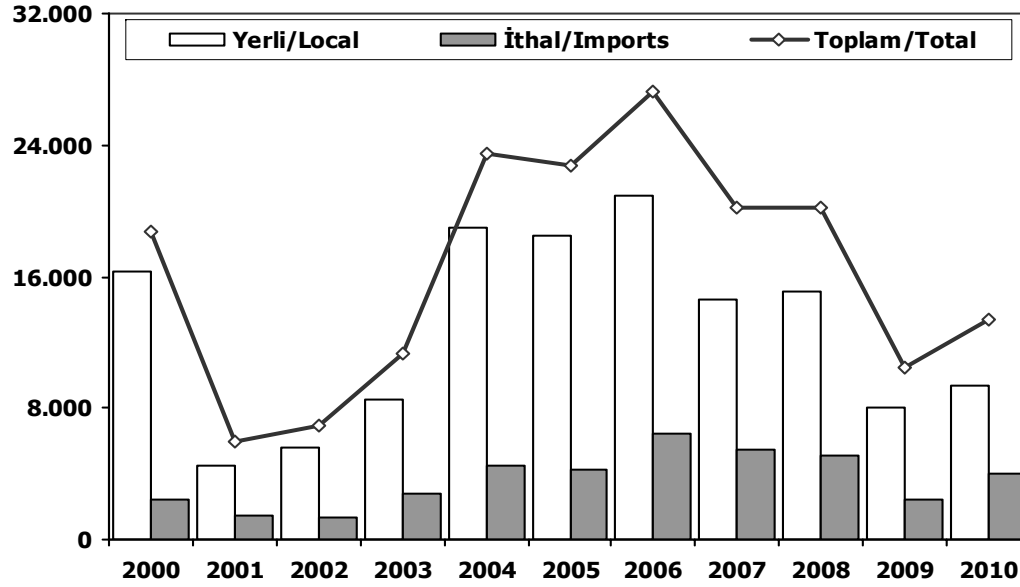


	2000	2001	2002	2003	2004	2005	2006	2007	2008	2009	2010
Yerli/Local	39.805	19.733	19.543	35.571	80.129	75.581	71.638	61.216	60.566	60.256	67.775
İthal/Imports	39.621	10.844	10.921	26.574	59.276	62.360	68.378	52.066	54.665	35.613	44.121
Toplam/Total	79.426	30.577	30.464	62.145	139.405	137.941	140.016	113.282	115.231	95.869	111.896
İthalat/Imports (%)	50	35	36	43	43	45	49	46	47	37	39



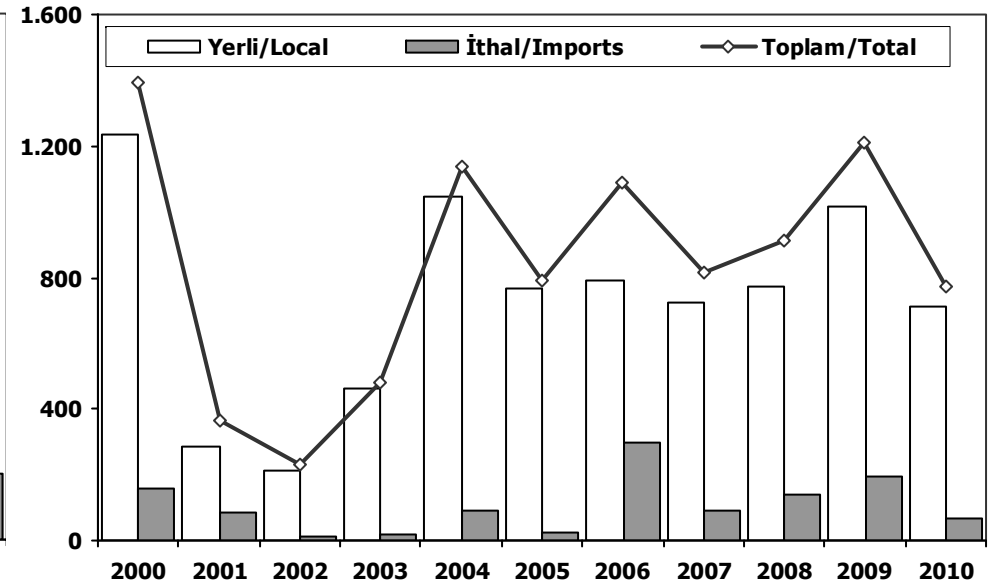
Ağır Ticari Araçlar Pazarı (2000-2010 Ocak-Temmuz)

HCV Market (2000-2010 January-July)



Otobüs Pazarı (2000-2010 Ocak-Temmuz)

Bus Market (2000-2010 January-July)



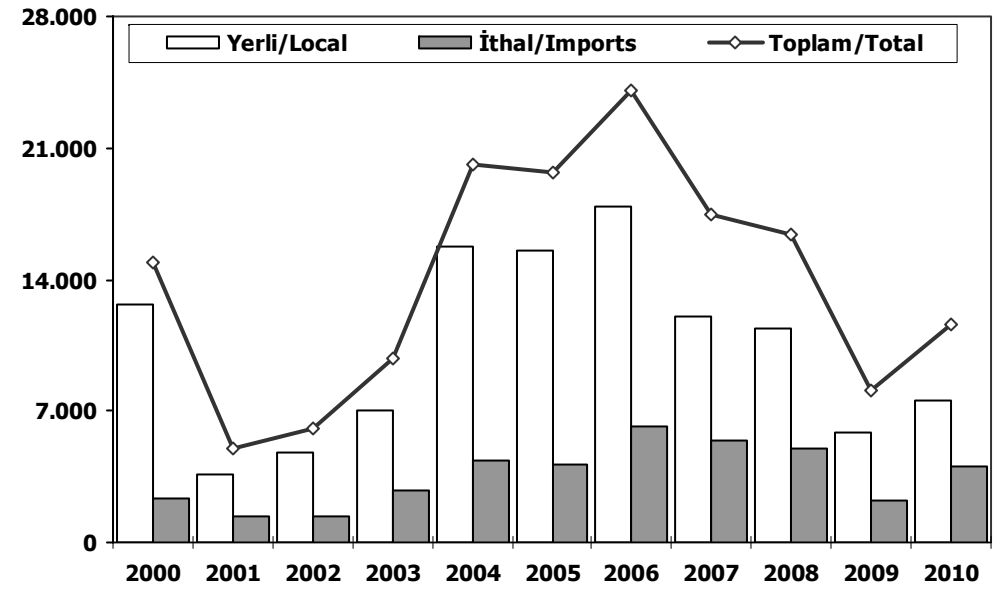
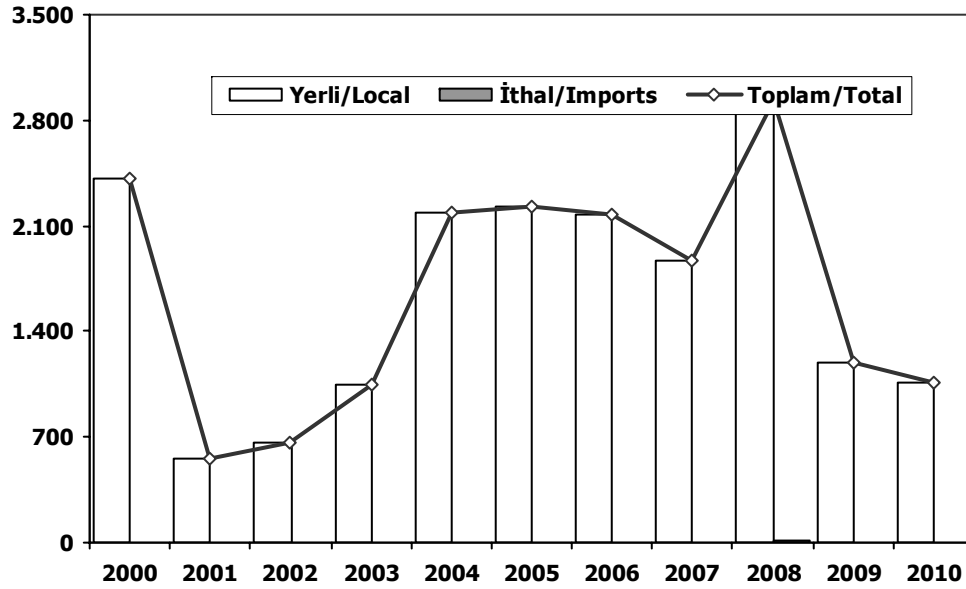
	2000	2001	2002	2003	2004	2005	2006	2007	2008	2009	2010
Yerli/Local	16.263	4.463	5.629	8.542	19.012	18.525	20.885	14.622	15.075	8.056	9.354
İthal/Imports	2.467	1.493	1.359	2.754	4.460	4.205	6.422	5.525	5.125	2.411	4.061
Toplam/Total	18.730	5.956	6.988	11.296	23.472	22.730	27.307	20.147	20.200	10.467	13.415
İthalat/Imports (%)	13	25	19	24	19	18	24	27	25	23	30

	2000	2001	2002	2003	2004	2005	2006	2007	2008	2009	2010
Yerli/Local	1.234	283	215	461	1.047	765	792	721	772	1.015	709
İthal/Imports	160	84	15	20	89	25	297	92	138	194	64
Toplam/Total	1.394	367	230	481	1.136	790	1.089	813	910	1.209	773
İthalat/Imports (%)	11	23	7	4	8	3	27	11	15	16	8



Midibüs Pazarı (2000-2010 Ocak-Temmuz) (7-9 mt / 25-35 Kişilik)
Midibus (2000-2010 January-July) Market (7-9 mt / 25-35 Passengers)

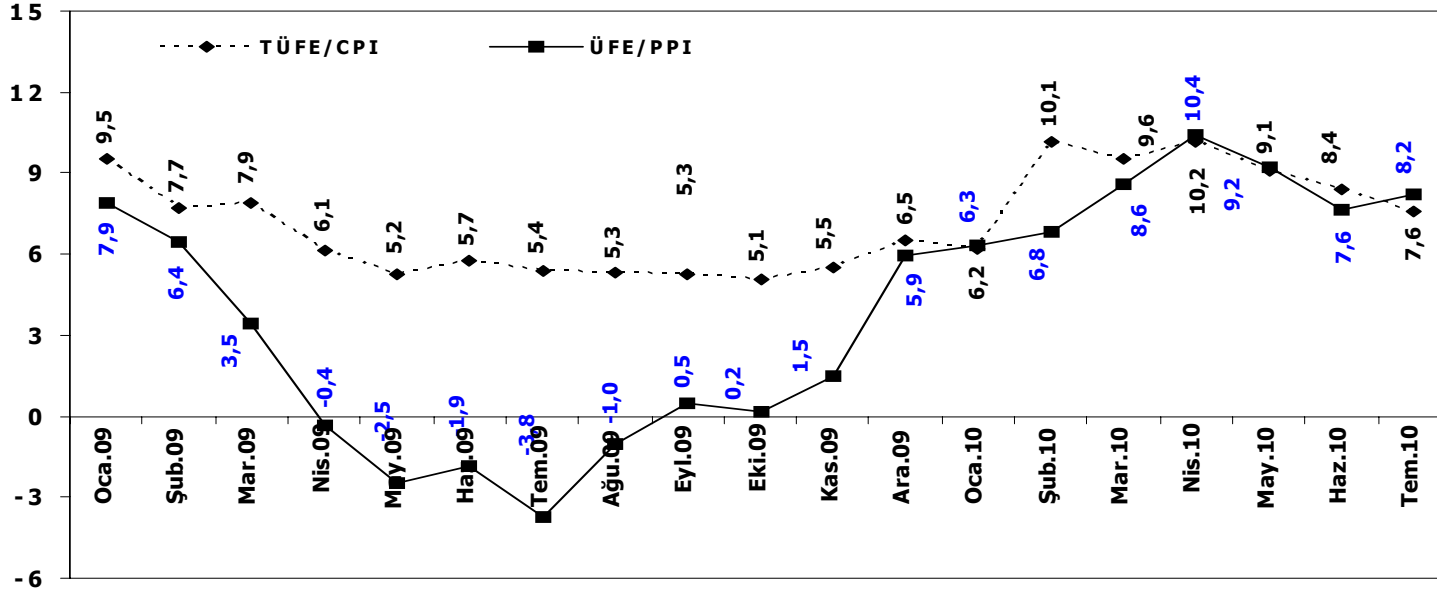
Kamyon Pazarı (2000-2010 Ocak-Temmuz)
Truck Market (2000-2010 January-July)



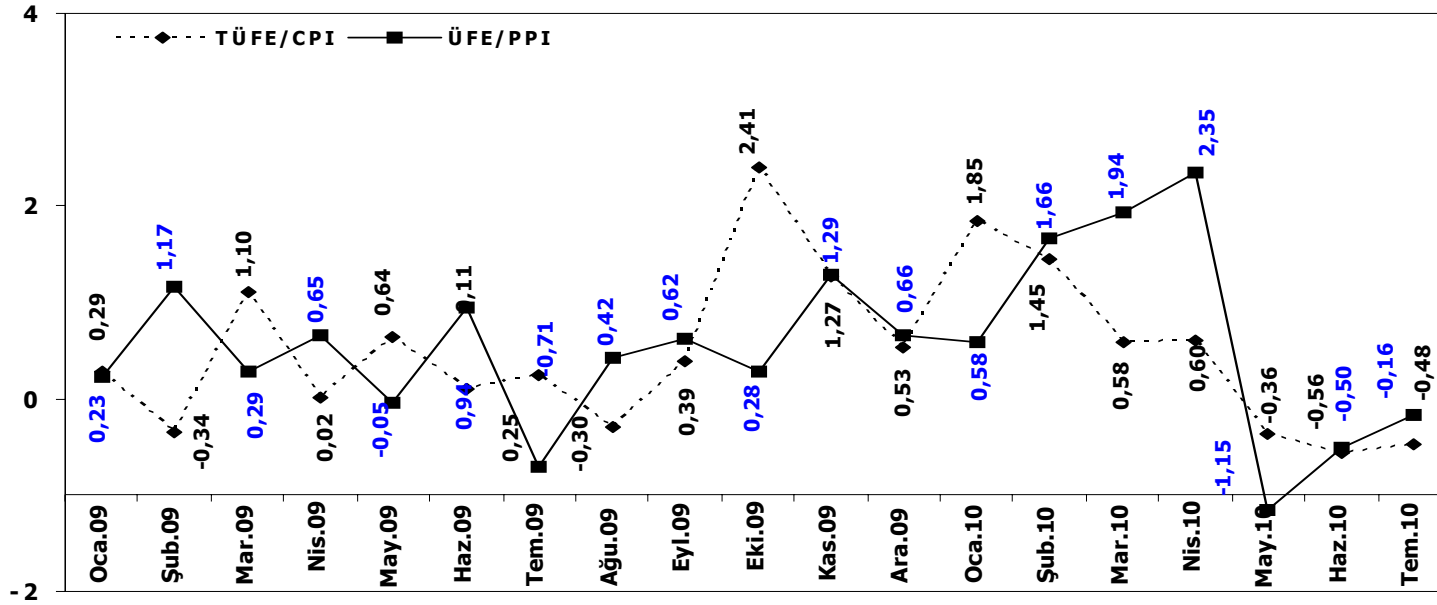
	2000	2001	2002	2003	2004	2005	2006	2007	2008	2009	2010
Yerli/Local	2.407	552	668	1.045	2.186	2.225	2.175	1.870	2.922	1.190	1.054
İthal/Imports	0	0	0	0	0	0	0	0	11	0	0
Toplam/Total	2.407	552	668	1.045	2.186	2.225	2.175	1.870	2.933	1.190	1.054
İthalat/Imports (%)	0	0	0	0	0	0	0	0	0	0	0

	2000	2001	2002	2003	2004	2005	2006	2007	2008	2009	2010
Yerli/Local	12.622	3.628	4.746	7.036	15.779	15.535	17.918	12.031	11.381	5.851	7.591
İthal/Imports	2.307	1.409	1.344	2.734	4.371	4.180	6.125	5.433	4.976	2.217	3.997
Toplam/Total	14.929	5.037	6.090	9.770	20.150	19.715	24.043	17.464	16.357	8.068	11.588
İthalat/Imports (%)	15	28	22	28	22	21	25	31	30	27	34

TÜFE ve ÜFE'nin Yıllık Değişimi (%) CPI and PPI Yearly Changes (%)



TÜFE ve ÜFE'nin Aylık Değişimi (%) CPI and PPI Monthly Changes (%)





OTOMOTİV SANAYİİ FABRİKA SATIŞLARI 2010 / AUTOMOTIVE INDUSTRY FACTORY SALES

TIPLER/TYPES	1	2	3	4	5	6	7	8	9	10	11	12	Total
OTOMOBİL	5.119	6.308	11.158	12.383	14.812	17.849	12.201	0	0	0	0	0	79.830
TICARI ARAC	5.424	8.821	12.017	14.489	14.064	14.738	13.663	0	0	0	0	0	83.216
* KAMYON	450	951	1.501	1.324	1.490	1.860	1.790	0	0	0	0	0	9.366
* KAMYONET	4.551	7.215	9.809	12.421	11.950	12.206	10.974	0	0	0	0	0	69.126
* MIDİBÜS	65	128	107	156	102	156	147	0	0	0	0	0	861
* MINİBÜS	296	390	506	418	335	286	594	0	0	0	0	0	2.825
* OTOBÜS	62	137	94	170	187	230	158	0	0	0	0	0	1.038
TRAKTÖR	714	903	1.432	1.653	1.736	1.673	1.613	0	0	0	0	0	9.724
TOTAL	11.257	16.032	24.607	28.255	30.612	34.260	27.477	0	0	0	0	0	172.770

Otomobil / Passenger Car

TIPLER/TYPES	1	2	3	4	5	6	7	8	9	10	11	12	Total
HONDA TÜRKİYE	405	653	1.000	848	784	808	819						5.317
HYUNDAI ASSAN	1.698	1.382	2.629	3.009	2.516	2.750	2.364						16.348
OYAK RENAULT	1.743	2.614	4.643	4.472	7.905	10.615	5.470						37.462
TOFAŞ	980	1.214	2.436	3.738	3.025	3.035	2.859						17.287
TOYOTA	293	445	450	316	582	641	689						3.416
TOTAL	5.119	6.308	11.158	12.383	14.812	17.849	12.201	0	0	0	0	0	79.830

Kamyonet / Pick-Up

TIPLER/TYPES	1	2	3	4	5	6	7	8	9	10	11	12	Total
A.I.O.S.	36	82	136	68	27	34	41						424
B.M.C.	37	112	22	45	39	18	24						297
FORD OTOSAN	2.157	2.593	3.994	4.520	5.395	4.321	4.352						27.332
HYUNDAI ASSAN	15	21	42	47	1	1	0						127
KARSAN	1	295	119	625	218	242	136						1.636
OTOKAR	100	100	107	47	7	1	40						402
TEMSA	13	76	46	65	77	30	42						349
TOFAŞ	2.192	3.936	5.343	7.004	6.186	7.559	6.339						38.559
TOTAL	4.551	7.215	9.809	12.421	11.950	12.206	10.974	0	0	0	0	0	69.126

Minibüs / Minibus

TIPLER/TYPES	1	2	3	4	5	6	7	8	9	10	11	12	Total
B.M.C.	58	69	48	12	20	8	4						219
FORD OTOSAN	212	169	176	230	257	218	393						1.655
KARSAN	0	133	265	140	40	40	188						806
OTOKAR	26	19	17	36	18	20	9						145
TOTAL	296	390	506	418	335	286	594	0	0	0	0	0	2.825

Kamyon / Truck

TIPLER/TYPES	1	2	3	4	5	6	7	8	9	10	11	12	Total
A.I.O.S.	32	67	167	9	73	166	87						601
B.M.C.	80	207	289	237	182	187	321						1.503
FORD OTOSAN	84	110	160	211	262	295	353						1.475
KARSAN	1	25	49	38	27	43	62						245
M. BENZ TÜRK	250	492	668	749	789	1.057	862						4.867
TEMSA	3	50	168	80	157	112	105						675
TOTAL	450	951	1.501	1.324	1.490	1.860	1.790	0	0	0	0	0	9.366

Midibüs / Midibus

TIPLER/TYPES	1	2	3	4	5	6	7	8	9	10	11	12	Total
A.I.O.S.	36	70	68	37	30	55	66						362
OTOKAR	29	58	39	78	36	63	37						340
TEMSA	0	0	0	41	36	38	44						159
TOTAL	65	128	107	156	102	156	147	0	0	0	0	0	861

Otobüs / Bus

TIPLER/TYPES	1	2	3	4	5	6	7	8	9	10	11	12	Total
B.M.C.	26	81	5	7	16	81	41						257
M. BENZ TÜRK	4	20	49	73	91	84	46						367
M.A.N.	12	12	14	46	32	31	39						186
OTOKAR	4	8	12	15	21	12	17						89
TEMSA	16	16	14	29	27	22	15						139
TOTAL	62	137	94	170	187	230	158	0	0	0	0	0	1.038

Traktör / Farm Tractor

TIPLER/TYPES	1	2	3	4	5	6	7	8	9	10	11	12	Total
HATTAT	57	65	149	122	158	90	91						732
TÜRK TRAKTÖR	657	838	1.283	1.531	1.578	1.583	1.522						8.992
TOTAL	714	903	1.432	1.653	1.736	1.673	1.613	0	0	0	0	0	9.724

OTOMOTİV SANAYİİ DIŞ SATIŞLARI 2010 / AUTOMOTIVE INDUSTRY EXPORTS SALES

TIPLER/TYPES	1	2	3	4	5	6	7	8	9	10	11	12	Total
OTOMOBİL	37.418	39.333	45.559	36.606	41.573	36.412	39.230	0	0	0	0	0	276.131
TICARI ARAC	22.581	27.003	31.578	24.229	25.292	31.667	21.460	0	0	0	0	0	183.810
* KAMYON	99	176	215	222	168	173	155	0	0	0	0	0	1.208
* KAMYONET	22.114	26.480	30.940	23.528	24.807	30.989	20.892	0	0	0	0	0	179.750
* MIDİBÜS	136	20	36	128	56	100	34	0	0	0	0	0	510
* MINİBÜS	64	44	40	42	43	50	84	0	0	0	0	0	367
* OTOBÜS	168	283	347	309	218	355	295	0	0	0	0	0	1.975
TRAKTÖR	607	1.273	950	792	1.069	1.018	882	0	0	0	0	0	6.591
TOTAL	60.606	67.609	78.087	61.627	67.934	69.097	61.572	0	0	0	0	0	466.532

Otomobil / Passenger Car

TIPLER/TYPES	1	2	3	4	5	6	7	8	9	10	11	12	Total
HONDA	887	835	1.474	1.044	1.029	904	509						6.682
HYUNDAI ASSAN	1.593	1.600	1.400	781	4.300	5.055	4.365						19.094
OYAK RENAULT	20.395	25.061	25.676	24.004	21.980	20.585	19.408						157.109
TOFAŞ	7.128	6.951	9.007	7.018	7.342	6.619	6.594						50.659
TOYOTA	7.415	4.886	8.002	3.759	6.922	3.249	8.354						42.587
TOTAL	37.418	39.333	45.559	36.606	41.573	36.412	39.230	0	0	0	0	0	276.131

Kamyonet / Pick-Up

TIPLER/TYPES	1	2	3	4	5	6	7	8	9	10	11	12	Total
FORD OTOSAN	8.157	12.823	16.528	12.706	15.241	19.300	9.745						94.500
KARSAN	804	1.485	1.863	1.859	1.674	1.623	1.877						11.185
OTOKAR	0	0	0	0	0	13	0						47
TEMSA	3	11	7	13	0	7	1						42
TOFAŞ	13.150	12.161	12.542	8.950	7.858	10.046	9.269						73.976
TOTAL	22.114	26.480	30.940	23.528	24.807	30.989	20.892	0	0	0	0	0	179.750

Minibüs / Minibus

TIPLER/TYPES	1	2	3	4	5	6	7	8	9	10	11	12	Total
B.M.C.	4	4	0	2	3	6	3						22
FORD OTOSAN	60	40	40	40	40	40	80						340
KARSAN	0	0	0	0	0	4	0						4
OTOKAR	0	0	0	0	0	0	1						1
TOTAL	64	44	40	42	43	50	84	0	0	0	0	0	367

Kamyon / Truck

**2010 Yılı İthal Otomobil Satışları / P.Cars Imports 2010**

	2009 Total	1	2	3	4	5	6	7	8	9	10	11	12	Total
ALFA ROMEO	262	4	13	28	15	12	21	17						110
AUDI	6.251	221	316	605	1.086	1.113	753	646						4.740
B.M.W	6.729	269	308	505	460	617	453	786						3.398
BENTLEY	8	1	1	0	3	2	0	0						8
CHEVROLET	10.408	480	810	924	1.253	1.304	1.519	1.122						7.417
CHRYSLER	212	17	15	15	17	10	22	9						105
CITROEN	6.627	160	486	798	1.009	834	870	923						5.080
DODGE	339	3	4	7	15	8	3	7						47
FERRARI	17	1	1	3	2	2	1	2						12
FIAT	6.099	130	162	353	473	556	797	786						3.257
FORD	33.462	966	1.981	3.868	3.141	4.654	4.657	4.774						24.041
HONDA	7.233	224	277	415	372	400	444	420						2.552
JAGUAR	263	4	13	14	12	13	12	15						83
JEEP	443	15	27	63	70	46	76	64						361
LAMBORGHINI	9	1	0	0	2	0	0	0						3
LANCIA	311	5	4	25	16	29	104	21						204
LAND ROVER	1.648	55	125	141	101	138	207	221						988
MASERATI	17	2	1	2	2	1	2	4						14
MERCEDES	9.700	381	497	942	780	954	857	564						4.975
MINI (İngiliz)	584	3	7	31	24	47	42	25						179
MITSUBISHI	1.400	44	112	136	202	146	139	93						872
NISSAN	5.949	275	395	920	442	581	605	804						4.022
OPEL	22.689	453	1.285	2.555	2.347	2.648	3.014	2.556						14.858
PEUGEOT	13.783	398	719	1.413	1.543	2.097	1.699	1.399						9.268
PORSCHE	247	15	21	20	22	25	32	36						171
RENAULT	5.908	138	152	332	473	477	492	481						2.545
SAB	56	1	1	1	7	0	0	0						7
SEAT	2.568	103	96	234	366	365	488	470						2.122
SMART	37	0	1	1	7	7	3	3						22
TOYOTA	18.637	935	1.364	1.595	1.279	1.706	1.964	4.000						12.843
VOLKSWAGEN	26.752	1.724	2.574	2.904	3.891	3.211	3.748	3.472						21.524
VOLVO	2.271	238	186	203	336	238	221	160						1.582
CHERY	2.361	179	213	147	149	130	155	285						1.258
DACIA	5.873	183	408	622	953	1.189	1.229	1.055						5.639
IKCO	203	5	0	32	18	16	17	13						101
LADA	290	10	2	2	4	28	11	10						67
SKODA	3.401	114	150	251	443	522	551	542						2.573
BAHAT SU	830	31	17	64	64	54	53	53						283
GEEELY	1.241	74	94	101	137	138	175	146						865
HYUNDAI	25.091	366	1.045	1.904	1.353	1.789	1.641	1.279						9.377
INFINITI	0	0	11	14	2	2	6	7						42
KIA	5.403	258	237	372	440	745	788	724						3.564
MAZDA	2.635	73	135	227	221	214	208	163						1.241
PROTON	906	50	40	66	90	93	109	67						515
SSANGYONG	704	46	93	122	53	63	39	68						484
SUBARU	1.162	50	50	63	83	109	103	81						539
SUZUKI	1.576	40	57	102	157	161	146	146						809
TATA	347	71	92	77	71	39	31	13						394
Total	243.542	8.805	14.612	23.172	23.999	27.529	28.502	28.532	0	0	0	0	0	155.151

2010 Yılı İthal Hafif Ticari Araç Satışları / Light Commercial Vehicles Imports 2010

	2009 Total	1	2	3	4	5	6	7	8	9	10	11	12	Total
CHRYSLER	0	0	0	0	0	0	0	0						0
CITROEN	3.627	154	390	674	381	690	612	818						3.719
FIAT	2.157	29	96	277	301	309	283	287						1.582
IVECO	794	32	40	100	91	67	81	86						497
MERCEDES	3.025	157	215	280	241	347	343	437						2.020
OPEL	2.021	126	107	149	113	87	168	117						867
PEUGEOT	8.007	121	427	643	791	834	676	896						4.388
RENAULT	13.449	609	823	1.042	1.250	1.130	1.408	1.359						7.621
VOLKSWAGEN	10.601	916	1.241	1.666	2.140	1.868	1.352	2.182						11.365
CHERY	193	27	17	16	23	17	22	33						155
DACIA	3.918	163	263	497	430	348	429	538						2.668
SKODA	2	0	0	0	0	0	0	0						0
DFM	2.468	189	166	196	72	96	128	137						984
FORD	1.736	97	75	75	88	281	67	66						749
HYUNDAI	3.281	115	174	215	171	178	139	149						1.141
ISUZU	2.046	140	204	343	93	183	216	107						1.285
KIA	768	40	48	208	103	54	56	41						550
MAHINDRA	108	5	4	9	6	6	1	0						31
MAZDA	397	16	35	44	27	24	16	29						191
MITSUBISHI	2.838	144	243	332	285	190	264	297						1.755
NISSAN	1.376	65	59	117	222	78	123	150						814
PROTON	2	0	5	4	3	2	8	4						26
SSANGYONG	1.072	29	69	88	123	108	74	93						584
TATA	848	49	50	145	101	106	90	37						578
TOYOTA	1.156	62	58	126	116	80	29	80						551
Total	65.890	3.285	4.809	7.246	7.170	7.083	6.585	7.943	0	0	0	0	0	44.121

Kaynak: ODD