



OTOMOTİV SANAYİİ DERNEĐİ
AUTOMOTIVE MANUFACTURERS ASSOCIATION

OTOMOTİV SEKTÖRÜ AYLIK DEĐERLENDİRME RAPORU NİSAN 2018

AUTOMOTIVE INDUSTRY MONTHLY REPORT
April 2018

OSD "OICA" Üyesidir



OSD is a Member of "OICA"

	4 - 2017	4 - 2018	%	1 - 4 / 2017	1 - 4 / 2018	%	5/2016 - 4/2017	5/2017 - 4/2018	%
Otomobil Üretimi/P.Cars Production	101.839	90.789	-10,9	402.091	375.957	-6,5	1.070.358	1.116.772	4,3
Toplam Üretim/Total Production	149.030	138.504	-7,1	573.246	563.695	-1,7	1.589.842	1.686.180	6,1
Otomobil Pazarı/P.Cars Market	57.998	55.108	-5,0	173.961	177.418	2,0	737.360	726.216	-1,5
Toplam Pazar/Total Market	77.848	73.391	-5,7	237.715	236.804	-0,4	985.354	979.366	-0,6
Otomobil İthalatı/P.Cars Import	40.512	37.464	-7,5	120.755	118.424	-1,9	544.085	503.636	-7,4
Toplam İthalat/Total Import	50.012	46.747	-6,5	151.321	147.145	-2,8	659.431	620.228	-5,9
Otomobil İhracatı/P.Cars Export	82.586	79.786	-3,4	337.382	315.225	-6,6	868.133	899.197	3,6
Toplam İhracat/Total Export	117.227	116.688	-0,5	472.626	461.495	-2,4	1.254.566	1.321.663	5,3
Otomobil İhracatı(\$)/P.Cars Export (\$)	962.652.049	1.244.067.148	29,2	3.975.565.349	4.537.078.234	14,1	10.122.783.641	12.352.707.894	22,0
Toplam İhracat(\$)/Total Export (\$)*	2.340.113.830	2.969.584.882	26,9	9.434.227.445	11.344.131.719	20,2	25.989.547.833	30.901.518.564	18,9

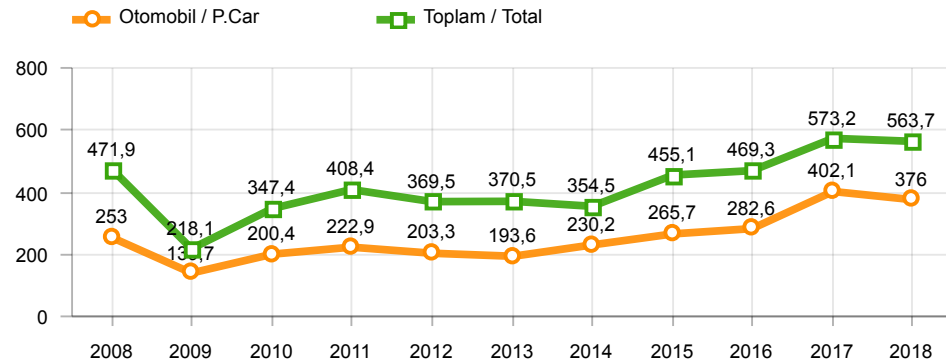
Parametreler/Parameters	4 - 2017	4 - 2018	%	1 - 4 / 2017	1 - 4 / 2018	%	5/2016 - 4/2017	5/2017 - 4/2018	%
ÜFE / PPI	0,8	2,6	-	7,2	8,0	-	8,0	15,4	-
TÜFE / CPI	1,3	1,9	-	5,7	4,7	-	8,7	11,1	-
Sanayi Endeksi / Industry Index	0,8	2,8	-	7,6	7,9	-	9,6	16,7	-
Dolar \$ **	3,6	4,0	11,3	3,6	3,9	5,7	3,3	3,7	13,6
Euro € **	3,9	4,9	26,0	3,9	4,7	21,4	3,5	4,4	23,6
Japon Yeni ¥ **	3,2	3,7	15,0	3,2	3,5	10,5	3,0	3,3	11,8

*Toplam Sanayi / Total Industry Including Components

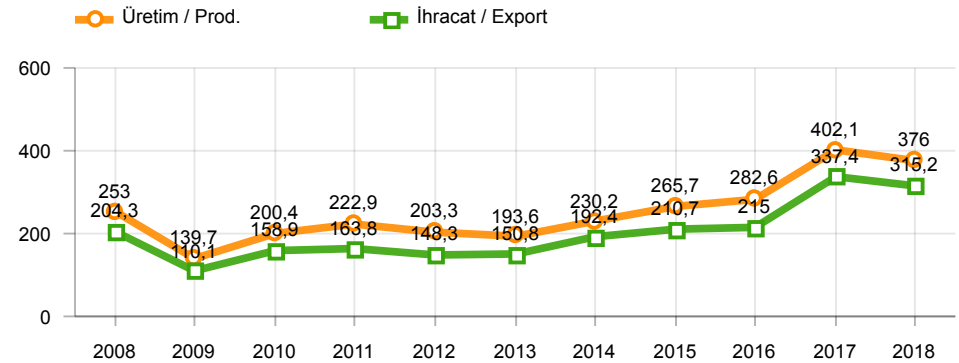
** Ortalama Değerler / Average Values

Araç Tipleri / Types	4 / 2017	4 / 2018	4 % Değişim	1-4 / 2017	1-4 / 2018	1-4 % Değişim
OTOMOBİL / Pass.Car	101.839	90.789	-10,9	402.091	375.957	-6,5
OTOMOBİL Toplam / Pass.Car Total	101.839	90.789	-10,9	402.091	375.957	-6,5
B.KAMYON / H. Truck	1.393	2.270	63,0	5.203	8.628	65,8
K.KAMYON / L.Truck	221	232	5,0	1.135	1.146	1,0
KAMYONET / Pick Up	39.911	38.848	-2,7	143.896	155.998	8,4
OTOBÜS / Bus	781	754	-3,5	3.082	2.863	-7,1
MİNİBÜS / Minibus	4.650	5.296	13,9	16.788	17.792	6,0
MİDİBÜS / Midibus	235	315	34,0	1.051	1.311	24,7
TİCARİ ARAÇLAR Toplam / Commercial Vehicles Total	47.191	47.715	1,1	171.155	187.738	9,7
TAŞIT ARAÇLARI Toplam / Motor Vehicles Total	149.030	138.504	-7,1	573.246	563.695	-1,7
TRAKTÖR / F.Tractor	4.062	4.188	3,1	16.356	18.382	12,4
TRAKTÖR Toplam / F.Tractor Total	4.062	4.188	3,1	16.356	18.382	12,4
GENEL TOPLAM / Grand Total	153.092	142.692	-6,8	589.602	582.077	-1,3

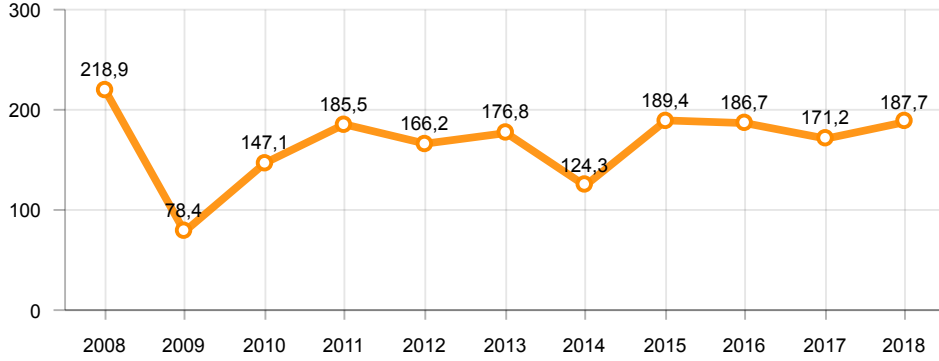
Toplam Üretim ve Otomobil Üretimi (x1000)(OCAK - NİSAN)
Total & P.Cars Production (x1000)(January - April)



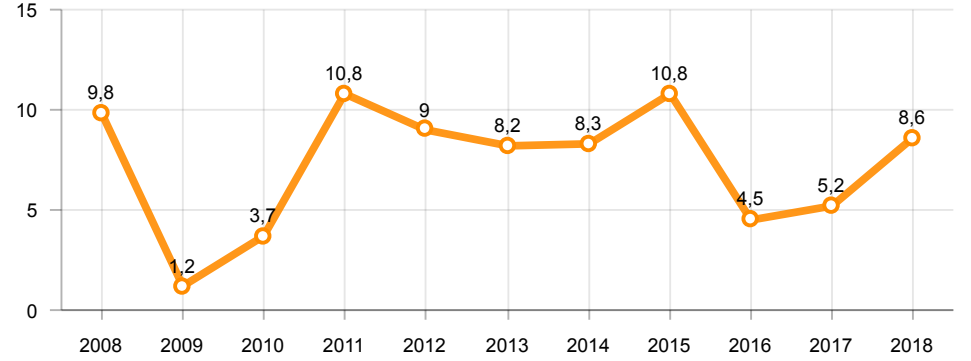
Otomobil Üretimi ve İhracat (x1000)(OCAK - NİSAN)
P.Cars Production & Exports (x1000)(January - April)



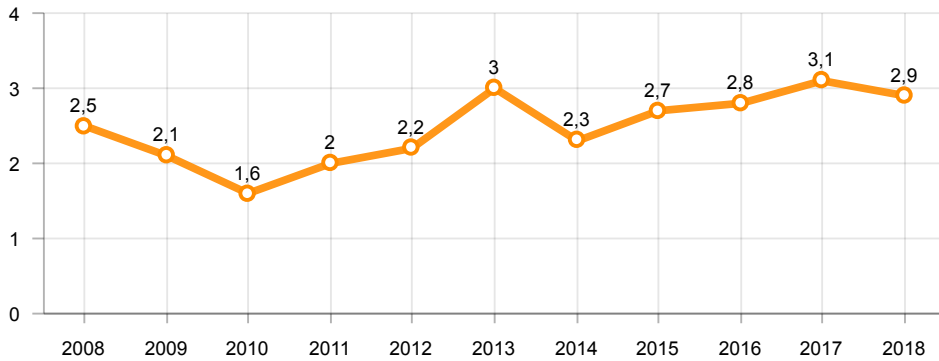
Ticari Araç Üretimi (x1000)(OCAK - NİSAN)
Commercial Vehicle Production (x1000)(January - April)



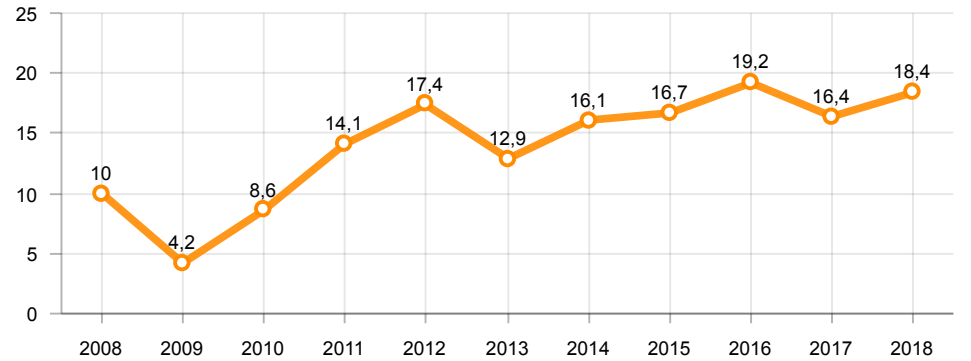
Büyük Kamyon Üretimi (x1000)(OCAK - NİSAN)
Heavy Truck Production (x1000)(January - April)

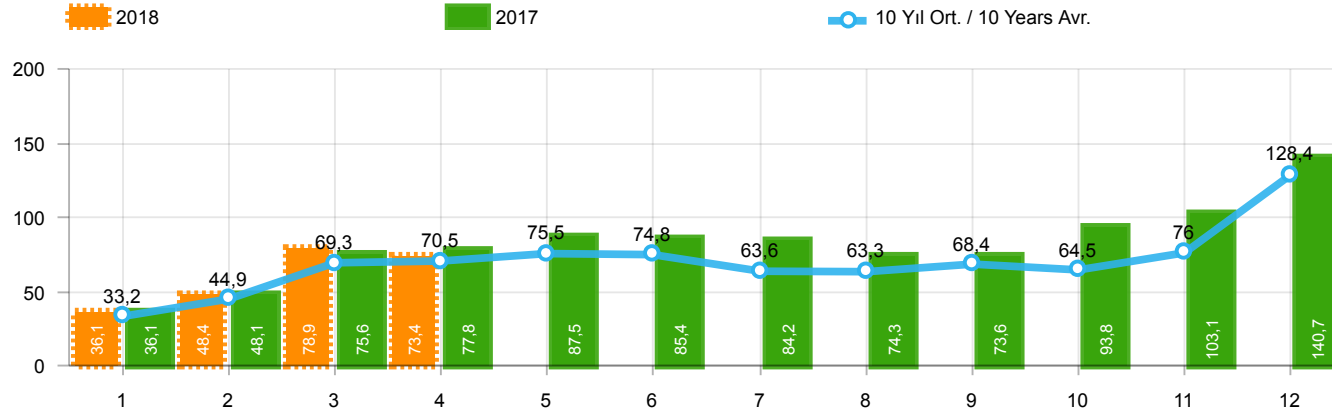


Otobüs Üretimi (x1000)(OCAK - NİSAN)
Bus Production (x1000)(January - April)



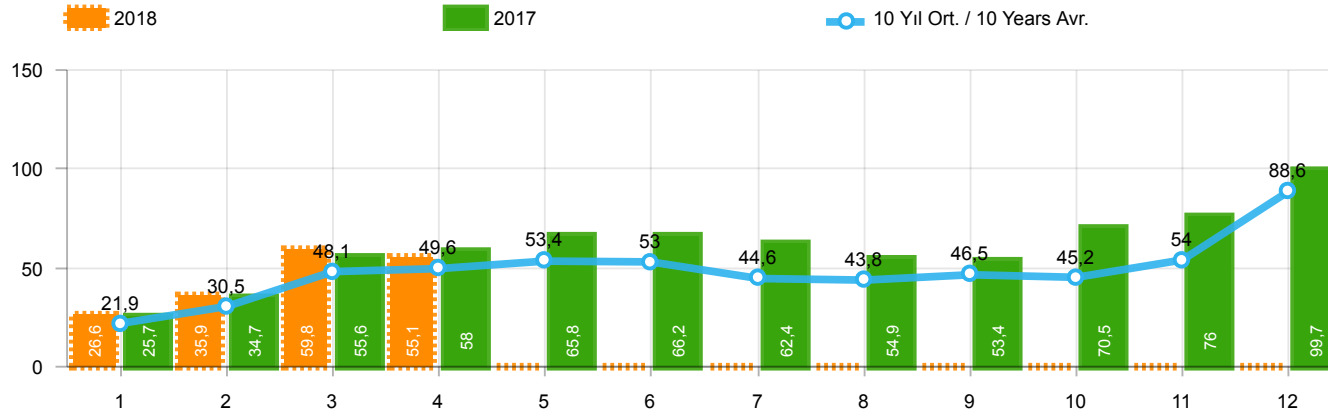
Traktör Üretimi (x1000)(OCAK - NİSAN)
F. Tractor Production (x1000)(January - April)





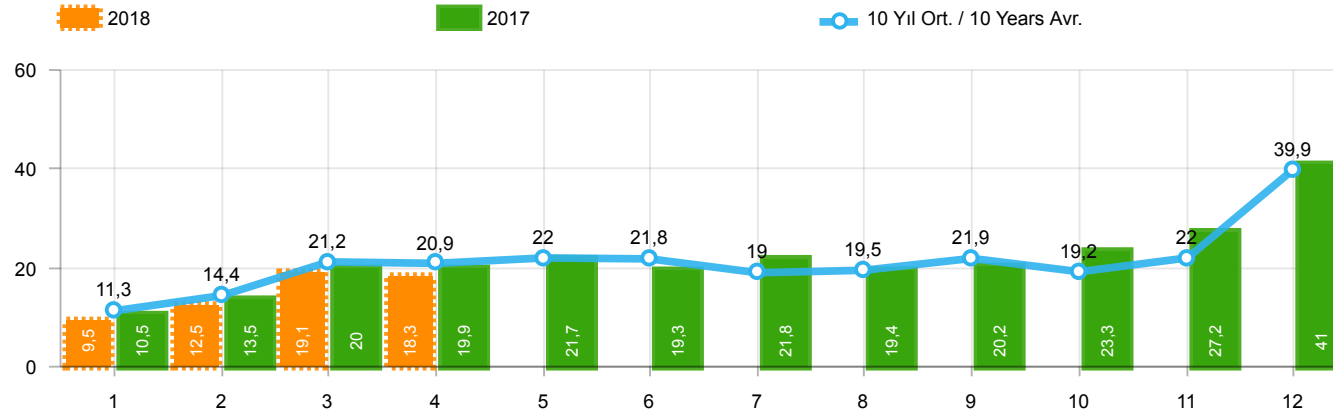
Aylar / Months	10 Yıl Ort / 10 Years Avr.	2018	%
1	33.218	36.107	8,7
2	44.859	48.391	7,9
3	69.303	78.915	13,9
4	70.466	73.391	4,2
TOPLAM	217.846	236.804	8,7

Yıl / Year	1	2	3	4	5	6	7	8	9	10	11	12	1-4 Toplam / Total	Toplam / Total	1-4 Yerli / Local	1-4 İthal / Import	İthal Oran / Import %
2008	33.792	38.121	56.814	50.967	51.627	49.393	44.692	46.592	46.829	35.147	28.152	44.418	179.694	526.544	78.773	100.921	56,2
2009	20.631	22.846	56.531	54.426	64.887	63.102	30.246	37.092	83.403	22.117	29.202	91.386	154.434	575.869	63.132	91.302	59,1
2010	21.050	32.313	53.828	57.079	61.628	63.390	63.718	64.645	66.601	76.780	77.406	154.734	164.270	793.172	69.366	94.904	57,8
2011	47.658	62.348	83.333	82.071	85.093	85.863	65.364	61.378	63.643	72.640	67.195	134.281	275.410	910.867	110.104	165.306	60,0
2012	31.219	43.827	68.957	66.014	74.820	74.781	65.122	60.848	73.197	62.677	75.045	121.113	210.017	817.620	82.639	127.378	60,7
2013	37.140	50.931	72.688	77.015	85.421	77.771	74.726	67.383	71.037	60.399	83.017	135.596	237.774	893.124	74.720	163.054	68,6
2014	34.225	37.308	50.964	56.766	61.909	63.952	62.206	62.839	70.180	69.259	83.937	153.941	179.263	807.486	58.565	120.698	67,3
2015	36.576	58.533	89.121	95.431	85.145	90.463	86.625	84.683	66.622	66.520	88.043	163.432	279.661	1.011.194	103.093	176.568	63,1
2016	33.740	54.223	85.214	87.041	96.576	94.203	59.505	73.269	69.068	85.251	124.839	144.928	260.218	1.007.857	87.020	173.198	66,6
2017	36.146	48.141	75.580	77.848	87.476	85.416	84.189	74.295	73.602	93.806	103.121	140.657	237.715	980.277	86.394	151.321	63,7
2018	36.107	48.391	78.915	73.391									236.804	236.804	89.659	147.145	62,1



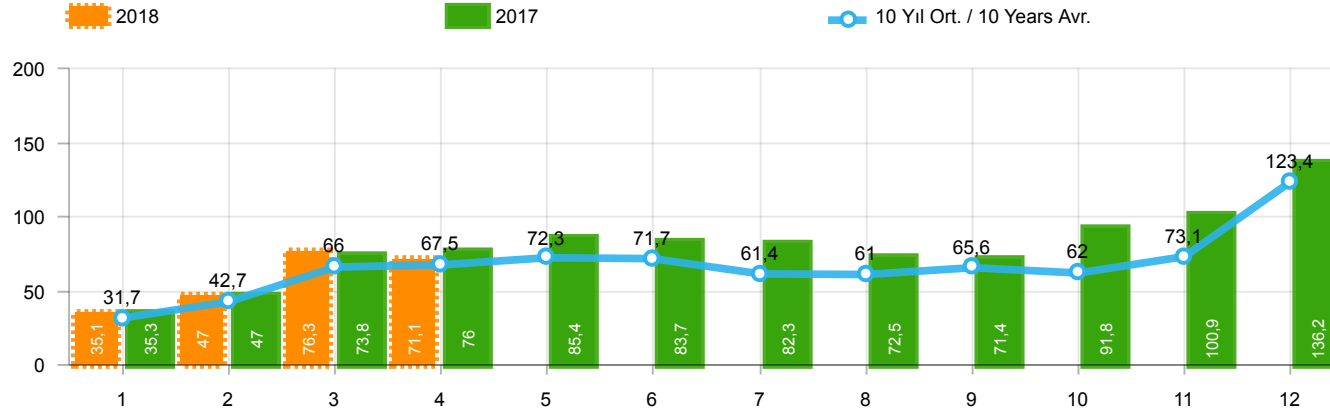
Aylar / Months	10 Yıl Ort. / 10 Years Avr.	2018	%
1	21.905	26.611	21,5
2	30.458	35.901	17,9
3	48.088	59.798	24,4
4	49.614	55.108	11,1
TOPLAM	150.065	177.418	18,2

Yıl / Year	1	2	3	4	5	6	7	8	9	10	11	12	1-4 Toplam / Total	Toplam / Total	1-4 Yerli / Local	1-4 İthal / Import	İthal Oran / Import %
2008	18.588	21.196	34.147	30.313	31.477	28.724	25.530	26.102	27.053	19.788	17.201	25.879	104.244	305.998	35.175	69.069	66,3
2009	13.173	14.492	40.622	36.202	44.188	41.019	16.637	22.537	52.162	13.828	17.781	57.178	104.489	369.819	33.776	70.713	67,7
2010	12.594	20.651	33.958	36.549	40.467	42.086	41.399	42.222	42.477	47.859	50.061	99.461	103.752	509.784	33.164	70.588	68,0
2011	29.868	39.004	54.023	53.835	56.302	56.714	43.518	38.875	39.964	47.508	44.951	88.957	176.730	593.519	53.940	122.790	69,5
2012	21.077	29.189	47.270	45.645	50.460	50.849	44.531	41.236	49.360	43.440	52.297	80.926	143.181	556.280	44.255	98.926	69,1
2013	25.835	36.814	51.785	56.999	62.383	58.290	55.712	51.611	52.925	46.985	64.117	101.199	171.433	664.655	36.802	134.631	78,5
2014	24.368	27.167	37.812	42.769	46.379	47.278	46.602	45.131	49.262	50.814	59.695	110.054	132.116	587.331	32.808	99.308	75,2
2015	24.498	40.817	61.676	70.211	62.878	67.766	64.218	61.753	47.088	47.954	62.397	114.340	197.202	725.596	54.215	142.987	72,5
2016	23.358	40.588	63.975	65.618	73.832	71.111	45.566	53.977	51.340	63.746	95.783	108.044	193.539	756.938	51.824	141.715	73,2
2017	25.689	34.658	55.616	57.998	65.799	66.164	62.384	54.890	53.423	70.488	75.956	99.694	173.961	722.759	53.206	120.755	69,4
2018	26.611	35.901	59.798	55.108									177.418	177.418	58.994	118.424	66,7



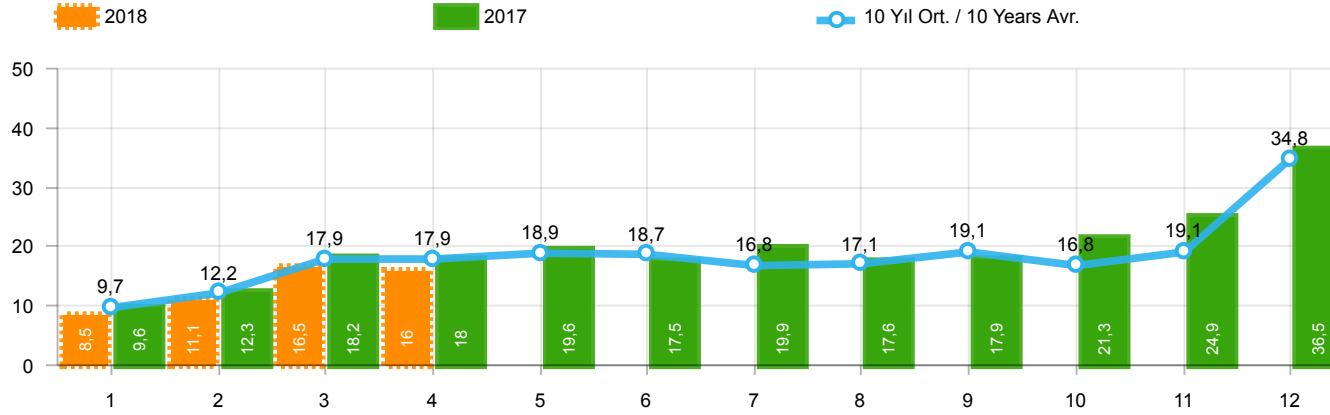
Aylar / Months	10 Yıl Ort / 10 Years Avr.	2018	%
1	11.313	9.496	-16,1
2	14.402	12.490	-13,3
3	21.215	19.117	-9,9
4	20.852	18.283	-12,3
TOPLAM	67.781	59.386	-12,4

Yıl / Year	1	2	3	4	5	6	7	8	9	10	11	12	1-4 Toplam / Total	Toplam / Total	1-4 Yerli / Local	1-4 İthal / Import	İthal Oran / Import %
2008	15.204	16.925	22.667	20.654	20.150	20.669	19.162	20.490	19.776	15.359	10.951	18.539	75.450	220.546	43.598	31.852	42,2
2009	7.458	8.354	15.909	18.224	20.699	22.083	13.609	14.555	31.241	8.289	11.421	34.208	49.945	206.050	29.356	20.589	41,2
2010	8.456	11.662	19.870	20.530	21.161	21.304	22.319	22.423	24.124	28.921	27.345	55.273	60.518	283.388	36.202	24.316	40,2
2011	17.790	23.344	29.310	28.236	28.791	29.149	21.846	22.503	23.679	25.132	22.244	45.324	98.680	317.348	56.164	42.516	43,1
2012	10.142	14.638	21.687	20.369	24.360	23.932	20.591	19.612	23.837	19.237	22.748	40.187	66.836	261.340	38.384	28.452	42,6
2013	11.305	14.117	20.903	20.016	23.038	19.481	19.014	15.772	18.112	13.414	18.900	34.397	66.341	228.469	37.918	28.423	42,8
2014	9.857	10.141	13.152	13.997	15.530	16.674	15.604	17.708	20.918	18.445	24.242	43.887	47.147	220.155	25.757	21.390	45,4
2015	12.078	17.716	27.445	25.220	22.267	22.697	22.407	22.930	19.534	18.566	25.646	49.092	82.459	285.598	48.878	33.581	40,7
2016	10.382	13.635	21.239	21.423	22.744	23.092	13.939	19.292	17.728	21.505	29.056	36.884	66.679	250.919	35.196	31.483	47,2
2017	10.457	13.483	19.964	19.850	21.677	19.252	21.805	19.405	20.179	23.318	27.165	40.963	63.754	257.518	33.188	30.566	47,9
2018	9.496	12.490	19.117	18.283									59.386	59.386	30.665	28.721	48,4



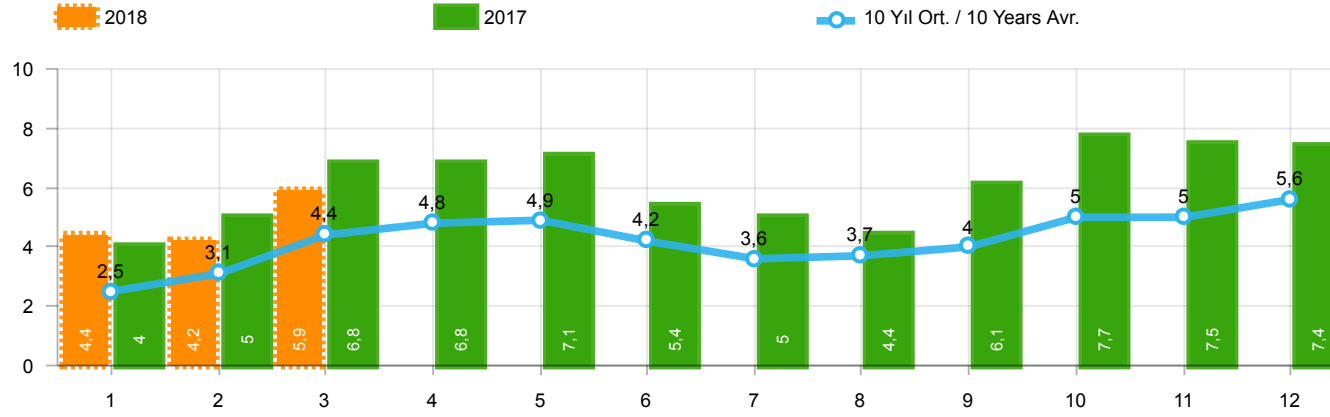
Aylar / Months	10 Yıl Ort / 10 Years Avr.	2018	%
1	31.651	35.076	10,8
2	42.660	47.009	10,2
3	66.022	76.345	15,6
4	67.529	71.126	5,3
TOPLAM	207.862	229.556	10,4

Yıl / Year	1	2	3	4	5	6	7	8	9	10	11	12	1-4 Toplam / Total	Toplam / Total	1-4 Yerli / Local	1-4 İthal / Import	İthal Oran / Import %
2008	31.527	35.251	53.649	47.701	48.598	46.324	42.156	43.670	43.932	32.884	26.253	42.078	168.128	494.023	69.948	98.180	58,4
2009	19.606	21.742	55.111	52.640	63.191	61.067	28.845	35.609	81.397	21.033	27.962	88.923	149.099	557.126	58.967	90.132	60,5
2010	20.095	31.172	51.769	54.946	59.377	60.896	61.345	61.764	63.814	73.404	73.962	148.369	157.982	760.913	64.884	93.098	58,9
2011	44.892	58.663	78.403	77.695	80.646	81.573	63.044	58.406	60.129	69.421	63.657	127.910	259.653	864.439	99.295	160.358	61,8
2012	29.545	41.324	64.884	62.949	70.863	71.067	62.304	58.148	69.629	59.938	71.710	115.400	198.702	777.761	74.521	124.181	62,5
2013	35.523	48.307	68.774	73.575	81.468	74.096	71.596	65.043	67.963	58.014	79.301	129.718	226.179	853.378	65.834	160.345	70,9
2014	32.670	35.021	47.581	53.305	58.121	60.163	59.907	60.199	66.531	66.573	80.621	146.989	168.577	767.681	50.531	118.046	70,0
2015	34.615	55.331	83.302	91.602	81.542	86.158	83.836	82.577	64.025	64.255	84.601	156.173	264.850	968.017	92.299	172.551	65,2
2016	32.713	52.825	82.948	84.887	93.904	91.540	58.533	71.556	67.593	83.000	122.309	141.912	253.373	983.720	83.208	170.165	67,2
2017	35.323	46.965	73.802	75.988	85.422	83.658	82.297	72.536	71.352	91.752	100.859	136.240	232.078	956.194	82.563	149.515	64,4
2018	35.076	47.009	76.345	71.126									229.556	229.556	85.456	144.100	62,8



Aylar / Months	10 Yıl Ort. / 10 Years Avr.	2018	%
1	9.746	8.465	-13,1
2	12.203	11.108	-9,0
3	17.934	16.547	-7,7
4	17.915	16.018	-10,6
TOPLAM	57.797	52.138	-9,8

Yıl / Year	1	2	3	4	5	6	7	8	9	10	11	12	1-4 Toplam / Total	Toplam / Total	1-4 Yerli / Local	1-4 İthal / Import	İthal Oran / Import %
2008	12.939	14.055	19.502	17.388	17.121	17.600	16.626	17.568	16.879	13.096	9.052	16.199	63.884	188.025	34.773	29.111	45,6
2009	6.433	7.250	14.489	16.438	19.003	20.048	12.208	13.072	29.235	7.205	10.181	31.745	44.610	187.307	25.191	19.419	43,5
2010	7.501	10.521	17.811	18.397	18.910	18.810	19.946	19.542	21.337	25.545	23.901	48.908	54.230	251.129	31.720	22.510	41,5
2011	15.024	19.659	24.380	23.860	24.344	24.859	19.526	19.531	20.165	21.913	18.706	38.953	82.923	270.920	45.355	37.568	45,3
2012	8.468	12.135	17.614	17.304	20.403	20.218	17.773	16.912	20.269	16.498	19.413	34.474	55.521	221.481	30.266	25.255	45,5
2013	9.688	11.493	16.989	16.576	19.085	15.806	15.884	13.432	15.038	11.029	15.184	28.519	54.746	188.723	29.032	25.714	47,0
2014	8.302	7.854	9.769	10.536	11.742	12.885	13.305	15.068	17.269	15.759	20.926	36.935	36.461	180.350	17.723	18.738	51,4
2015	10.117	14.514	21.626	21.391	18.664	18.392	19.618	20.824	16.937	16.301	22.204	41.833	67.648	242.421	38.084	29.564	43,7
2016	9.355	12.237	18.973	19.269	20.072	20.429	12.967	17.579	16.253	19.254	26.526	33.868	59.834	226.782	31.384	28.450	47,5
2017	9.634	12.307	18.186	17.990	19.623	17.494	19.913	17.646	17.929	21.264	24.903	36.546	58.117	233.435	29.357	28.760	49,5
2018	8.465	11.108	16.547	16.018									52.138	52.138	26.462	25.676	49,2



Aylar / Months	10 Yıl Ort. / 10 Years Avr.	2018	%
1	2.510	4.362	73,8
2	3.127	4.179	33,7
3	4.447	5.925	33,2
TOPLAM	10.084	14.466	43,5

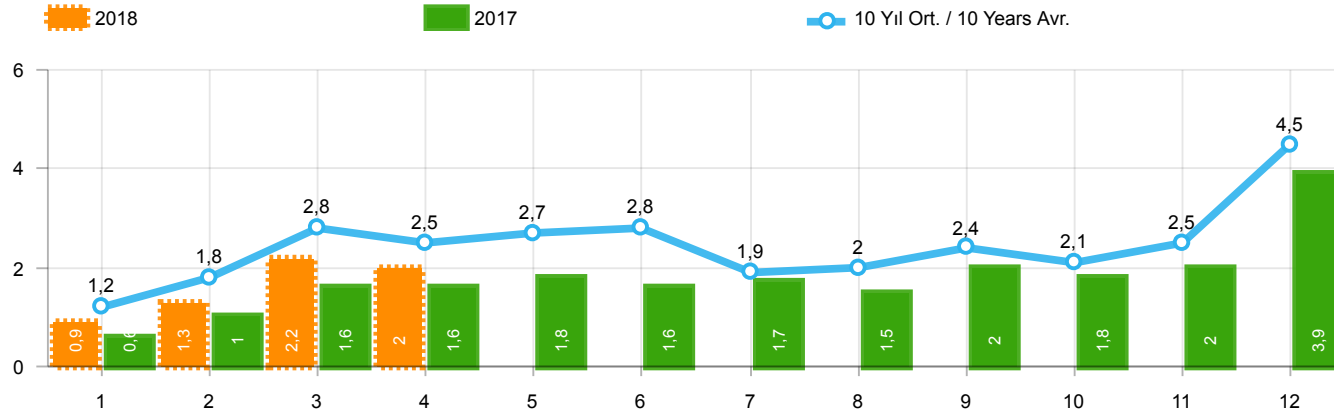
Yıl / Year	1	2	3	4	5	6	7	8	9	10	11	12	1-3 Toplam / Total	Toplam / Total
2008	2.770	1.855	3.395	3.081	2.769	2.400	2.232	2.485	1.856	1.773	1.305	1.101	8.020	27.022
2009	717	572	688	1.070	1.297	1.256	1.054	1.183	1.117	1.356	1.304	2.144	1.977	13.758
2010	1.111	1.991	2.330	3.039	2.567	2.638	1.965	3.019	2.806	4.424	3.978	6.168	5.432	36.036
2011	2.975	5.242	5.927	5.358	6.016	6.335	4.534	4.051	4.140	5.828	4.943	4.992	14.144	60.341
2012	2.362	1.983	4.348	6.579	6.273	4.569	3.837	3.158	3.618	4.027	4.807	4.757	8.693	50.318
2013	2.161	2.432	4.005	4.585	5.616	3.136	4.574	3.408	4.935	4.762	5.781	6.891	8.598	52.286
2014	2.169	3.512	4.476	4.905	5.094	5.028	4.233	4.920	5.619	5.743	6.250	7.409	10.157	59.358
2015	3.124	3.984	5.460	6.383	6.078	5.748	4.677	5.044	4.765	7.049	6.898	7.564	12.568	66.774
2016	3.739	4.731	7.067	6.546	6.575	5.543	3.833	5.134	4.945	7.372	7.090	7.603	15.537	70.178
2017	3.974	4.964	6.773	6.780	7.057	5.356	5.003	4.396	6.064	7.734	7.457	7.351	15.711	72.909
2018	4.362	4.179	5.925										14.466	14.466

Kaynak: TÜİK trafik kayıtları.

Rakamlar, son iki model yılına ait traktör tescillerinden oluşmaktadır.

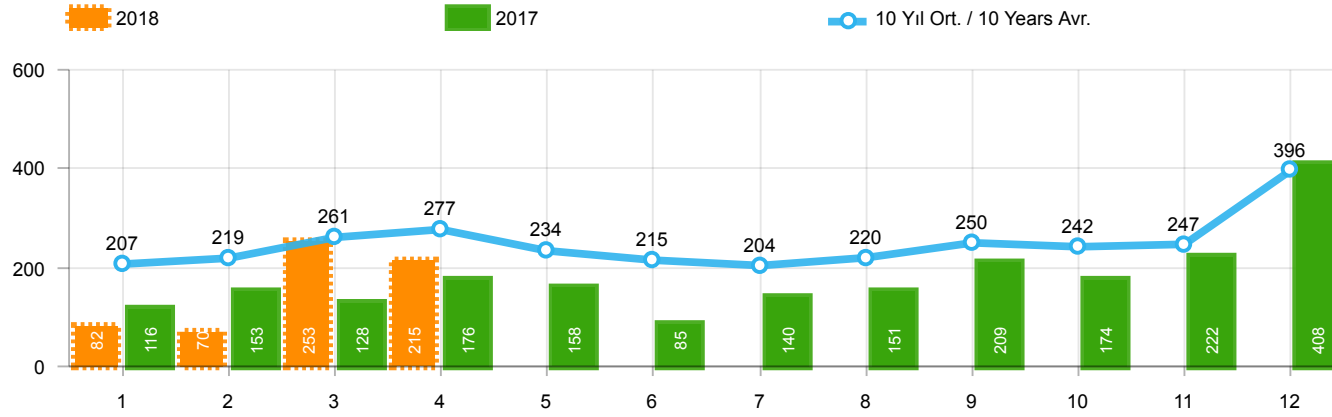
Source: Turkish Statistical Institute – Traffic registrations

Data represents the last two model year's farm tractors registration figures



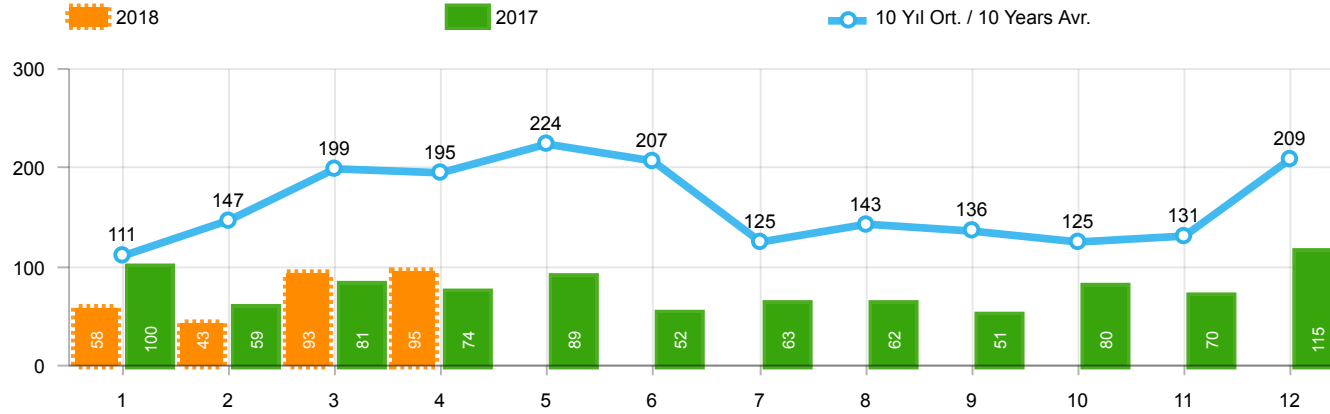
Aylar / Months	10 Yıl Ort / 10 Years Avr.	2018	%
1	1.250	891	-28,7
2	1.833	1.269	-30,8
3	2.821	2.224	-21,2
4	2.464	1.955	-20,7
TOPLAM	8.367	6.339	-24,2

Yıl / Year	1	2	3	4	5	6	7	8	9	10	11	12	1-4 Toplam / Total	Toplam / Total	1-4 Yerli / Local	1-4 İthal / Import	İthal Oran / Import %
2008	1.797	2.309	2.621	2.578	2.459	2.526	2.067	2.377	2.390	1.790	1.512	1.834	9.305	26.260	6.609	2.696	29,0
2009	771	759	1.034	1.342	1.355	1.651	1.156	1.205	1.780	866	981	2.015	3.906	14.915	2.876	1.030	26,4
2010	777	968	1.772	1.807	1.966	2.205	2.093	2.446	2.444	3.071	3.136	5.677	5.324	28.362	3.555	1.769	33,2
2011	2.552	3.292	4.418	3.754	3.803	3.749	1.996	2.478	3.081	2.774	3.108	5.787	14.016	40.792	9.099	4.917	35,1
2012	1.375	2.159	3.595	2.697	3.321	3.250	2.450	2.277	2.991	2.244	3.006	5.000	9.826	34.365	6.668	3.158	32,1
2013	1.077	1.931	3.127	2.720	3.145	2.951	2.411	1.845	2.554	1.801	3.173	5.025	8.855	31.760	6.201	2.654	30,0
2014	1.117	1.949	2.818	3.092	3.405	3.438	2.083	2.390	3.281	2.494	3.028	6.313	8.976	35.408	6.364	2.612	29,1
2015	1.705	2.841	5.270	3.208	3.190	3.824	2.463	1.798	2.244	1.848	2.902	6.540	13.024	37.833	9.047	3.977	30,5
2016	718	1.154	1.984	1.835	2.420	2.358	830	1.529	1.204	1.962	2.123	2.640	5.691	20.757	2.698	2.993	52,6
2017	607	964	1.569	1.610	1.807	1.621	1.689	1.546	1.990	1.800	1.970	3.894	4.750	21.067	2.984	1.766	37,2
2018	891	1.269	2.224	1.955									6.339	6.339	3.298	3.041	48,0



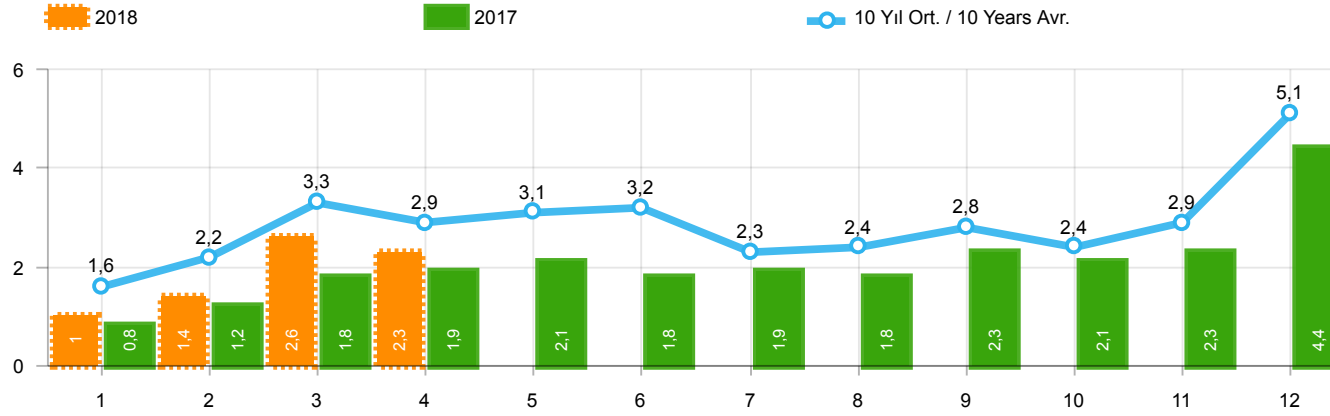
Aylar / Months	10 Yıl Ort. / 10 Years Avr.	2018	%
1	207	82	-60,3
2	219	70	-68,1
3	261	253	-2,9
4	277	215	-22,5
TOPLAM	964	620	-35,7

Yıl / Year	1	2	3	4	5	6	7	8	9	10	11	12	1-4 Toplam / Total	Toplam / Total
2008	391	476	436	512	419	331	368	380	341	352	246	270	1.815	4.522
2009	154	124	160	220	174	198	160	175	168	143	206	323	658	2.205
2010	155	131	185	167	140	138	129	246	236	206	202	437	638	2.372
2011	138	195	294	316	280	258	211	305	301	276	260	270	943	3.104
2012	179	257	277	229	257	239	216	249	325	269	189	398	942	3.084
2013	191	268	289	276	283	241	367	235	305	392	415	697	1.024	3.959
2014	335	265	326	280	206	223	161	174	229	140	226	454	1.206	3.019
2015	177	213	350	425	288	306	195	154	231	283	240	450	1.165	3.312
2016	229	112	161	172	133	132	95	130	150	187	264	254	674	2.019
2017	116	153	128	176	158	85	140	151	209	174	222	408	573	2.120
2018	82	70	253	215									620	620



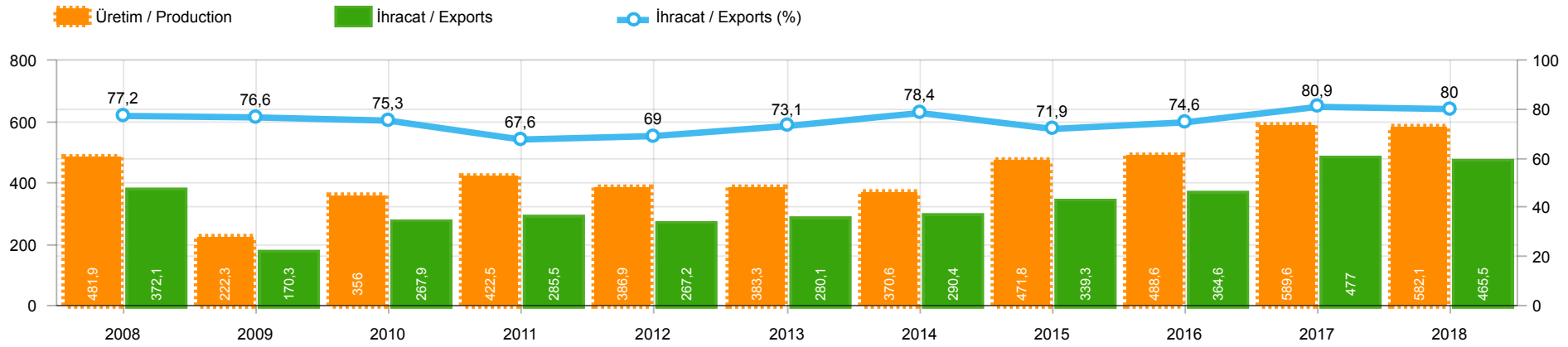
Aylar / Months	10 Yıl Ort / 10 Years Avr.	2018	%
1	111	58	-47,6
2	147	43	-70,7
3	199	93	-53,3
4	195	95	-51,4
TOPLAM	652	289	-55,7

Yıl / Year	1	2	3	4	5	6	7	8	9	10	11	12	1-4 Toplam / Total	Toplam / Total	1-4 Yerli / Local	1-4 İthal / Import	İthal Oran / Import %
2008	77	85	108	176	151	212	101	165	166	121	141	236	446	1.739	410	36	8,1
2009	100	221	226	224	167	186	85	103	58	75	53	125	771	1.623	631	140	18,2
2010	23	42	102	159	145	151	151	189	107	99	106	251	326	1.525	289	37	11,3
2011	76	198	218	306	364	283	113	189	132	169	170	314	798	2.532	767	31	3,9
2012	120	87	201	139	379	225	152	174	252	226	140	315	547	2.410	508	39	7,1
2013	349	425	498	444	525	483	352	260	215	192	128	156	1.716	4.027	1.661	55	3,2
2014	103	73	239	89	177	128	55	76	139	52	62	185	504	1.378	464	40	7,9
2015	79	148	199	196	125	175	131	154	122	134	300	269	622	2.032	582	40	6,4
2016	80	132	121	147	119	173	47	54	121	102	143	122	480	1.361	440	40	8,3
2017	100	59	81	74	89	52	63	62	51	80	70	115	314	896	274	40	12,7
2018	58	43	93	95									289	289	285	4	1,4



Aylar / Months	10 Yıl Ort / 10 Years Avr.	2018	%
1	1.567	1.031	-34,2
2	2.199	1.382	-37,2
3	3.281	2.570	-21,7
4	2.937	2.265	-22,9
TOPLAM	9.984	7.248	-27,4

Yıl / Year	1	2	3	4	5	6	7	8	9	10	11	12	1-4 Toplam / Total	Toplam / Total	1-4 Yerli / Local	1-4 İthal / Import	İthal Oran / Import %
2008	2.265	2.870	3.165	3.266	3.029	3.069	2.536	2.922	2.897	2.263	1.899	2.340	11.566	32.521	8.825	2.741	23,7
2009	1.025	1.104	1.420	1.786	1.696	2.035	1.401	1.483	2.006	1.084	1.240	2.463	5.335	18.743	4.165	1.170	21,9
2010	955	1.141	2.059	2.133	2.251	2.494	2.373	2.881	2.787	3.376	3.444	6.365	6.288	32.259	4.482	1.806	28,7
2011	2.766	3.685	4.930	4.376	4.447	4.290	2.320	2.972	3.514	3.219	3.538	6.371	15.757	46.428	10.809	4.948	31,4
2012	1.674	2.503	4.073	3.065	3.957	3.714	2.818	2.700	3.568	2.739	3.335	5.713	11.315	39.859	8.118	3.197	28,3
2013	1.617	2.624	3.914	3.440	3.953	3.675	3.130	2.340	3.074	2.385	3.716	5.878	11.595	39.746	8.886	2.709	23,4
2014	1.555	2.287	3.383	3.461	3.788	3.789	2.299	2.640	3.649	2.686	3.316	6.952	10.686	39.805	8.034	2.652	24,8
2015	1.961	3.202	5.819	3.829	3.603	4.305	2.789	2.106	2.597	2.265	3.442	7.259	14.811	43.177	10.794	4.017	27,1
2016	1.027	1.398	2.266	2.154	2.672	2.663	972	1.713	1.475	2.251	2.530	3.016	6.845	24.137	3.812	3.033	44,3
2017	823	1.176	1.778	1.860	2.054	1.758	1.892	1.759	2.250	2.054	2.262	4.417	5.637	24.083	3.831	1.806	32,0
2018	1.031	1.382	2.570	2.265									7.248	7.248	4.203	3.045	42,0



	2008	2009	2010	2011	2012	2013	2014	2015	2016	2017	2018
İhracat/Export	372.135	170.284	267.926	285.481	267.151	280.102	290.418	339.348	364.571	477.020	465.501
Üretim/Production	481.933	222.341	356.033	422.537	386.906	383.336	370.581	471.824	488.575	589.602	582.077
İhracat/Exports (%)	77,2	76,6	75,3	67,6	69	73,1	78,4	71,9	74,6	80,9	80

Taşıt Araçları İhracatı (2016 - 2018)
Motor Vehicle Exports (2016 - 2018)

SEKTÖR / SECTOR	2016	2017	1/4-2017	1/4-2018	2018/2017 %
OTOMOBİL / Pass.Car	745.709	921.354	337.382	315.225	-6,6
OTOMOBİL TOPLAM	745.709	921.354	337.382	315.225	-6,6
KAMYON / Truck	5.521	7.800	2.112	3.749	77,5
KAMYONET / Pick Up	347.949	350.108	115.928	125.724	8,5
OTOBÜS / Bus	6.498	7.028	2.280	2.118	-7,1
MİNİBÜS / Minibus	34.790	45.794	14.768	14.469	-2,0
MİDİBÜS / Midibus	915	710	156	210	34,6
TİCARİ ARAÇLAR TOPLAM	395.673	411.440	135.244	146.270	8,2
TAŞIT ARAÇLARI TOPLAM	1.141.382	1.332.794	472.626	461.495	-2,4
TRAKTÖR / F.Tractor	13.651	13.123	4.394	4.006	-8,8
TRAKTÖR TOPLAM	13.651	13.123	4.394	4.006	-8,8
GENEL TOPLAM	1.155.033	1.345.917	477.020	465.501	-2,4

Üretici Bazında İhracat (adet)
Exports by Manufacturer (unit)

Üreticiler / Manufacturers	2016	2017	1-4 / 2017	1-4 / 2018
A.I.O.S.	673	700	144	197
FORD OTOSAN	256.706	296.840	100.534	108.202
HATTAT TRAKTÖR	1.026	1.100	370	119
HONDA TÜRKİYE	2.914	9.391	2.555	5.795
HYUNDAI ASSAN	207.234	204.382	70.111	64.591
KARSAN	3.629	2.969	470	1.161
M. BENZ TÜRK	8.307	9.865	3.108	4.496
MAN TÜRKİYE	1.717	2.007	748	749
OTOKAR	833	691	182	140
OYAK RENAULT	270.088	287.915	106.339	97.986
TEMSA	653	870	162	76
TOFAŞ	279.444	270.698	102.281	93.334
TOYOTA	109.184	246.466	85.992	84.768
TÜRK TRAKTÖR	12.625	12.023	4.024	3.887
GENEL TOPLAM / Grand Total	1.155.033	1.345.917	477.020	465.501

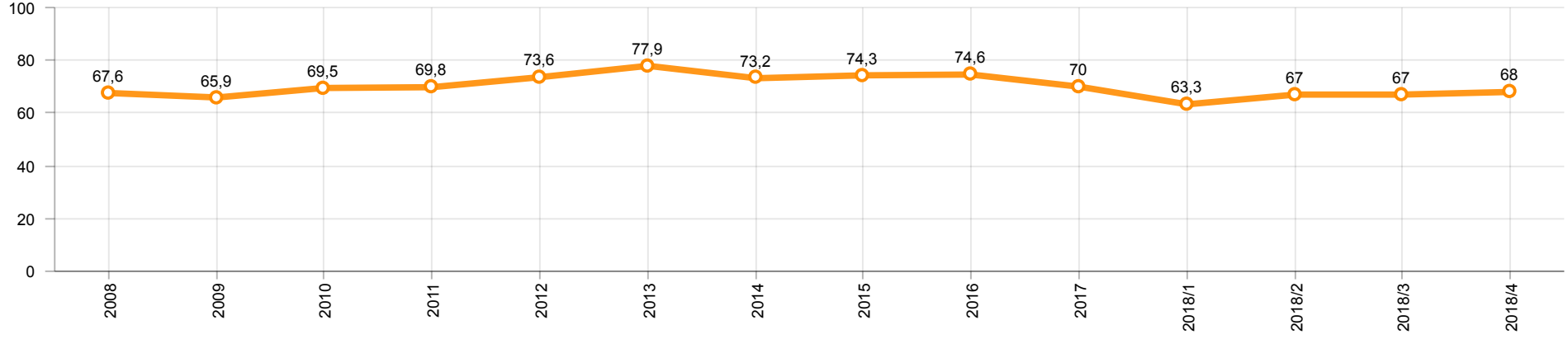
Otomotiv Ana ve Yan Sanayii İhracatı (ABD \$)
CBU and CKD Exports - \$

Sektör / Sector	2016	2017	OCAK - NİSAN / January - April 2017	OCAK - NİSAN / January - April 2018	2018 / 2017 %
Toplam Yan Sanayi / Total Component Industry	8.946.472.202	9.838.541.338	3.091.714.259	3.848.355.856	24,5
İç ve Dış Lastik / Tyres	978.124.241	1.131.881.119	350.573.873	465.702.368	32,8
Emniyet Camı / Safety Glasses	119.553.098	136.486.808	43.863.164	53.634.060	22,3
Motor / Engine	370.418.066	486.426.738	153.670.975	222.954.295	45,1
Akümülatör / Batteries	224.588.995	296.139.813	72.559.376	108.462.363	49,5
Diğer Aksam ve Parça / Spare Parts&Components	7.253.787.802	7.787.606.860	2.471.046.871	2.997.602.770	21,3
Toplam Ana Sanayi / Total Vehicle Industry	15.302.656.887	19.147.991.647	6.342.513.186	7.495.775.863	18,2
Otobüs / Bus	1.190.475.986	1.311.098.736	400.734.792	468.197.005	16,8
Midibüs-Minibüs / Midibus-Minibus	238.911.957	217.704.499	84.532.977	78.414.869	-7,2
Otomobil / P.Cars	8.336.928.418	11.790.776.093	3.975.565.349	4.537.078.234	14,1
Kamyon-Kamyonet / Truck-Pick Up&Van	4.617.147.751	4.849.465.868	1.557.887.639	1.892.808.390	21,5
Römork ve Yarı Römork / Trailer-Semi Trailer	265.338.366	230.168.223	98.175.371	158.932.766	61,9
Çekici / Tractor	316.355.575	427.967.083	123.002.117	254.555.768	107,0
Tarım Traktörü / Farm Tractor	337.498.834	320.811.145	102.614.941	105.788.831	3,1
Toplam / Total	24.249.129.089	28.986.532.985	9.434.227.445	11.344.131.719	20,2

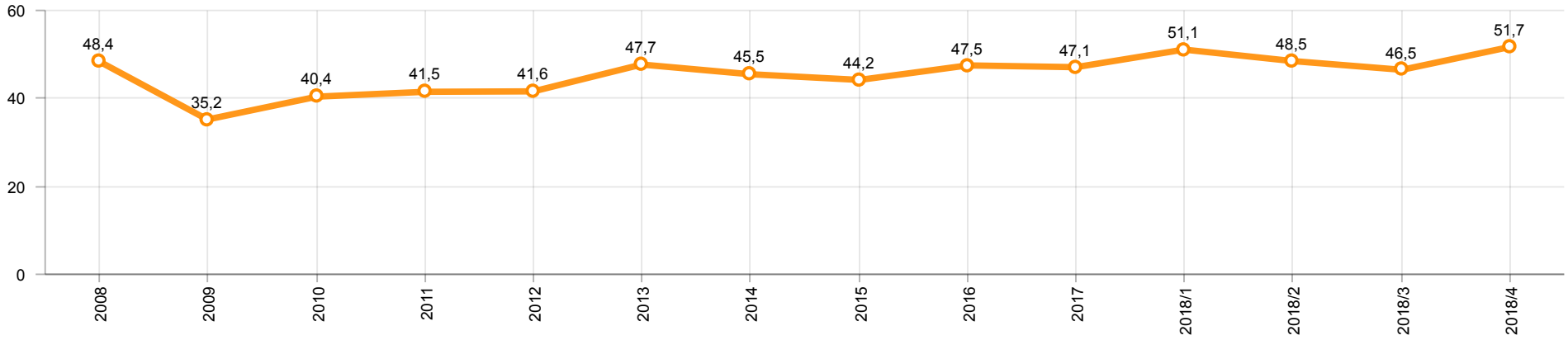
Kaynak: Uludağ İhracatçı Birlikleri . ÜİB tarafından OSD için özel olarak analiz edilen Otomotiv İhracatı kapsamında; ÜİB Türkiye Geneli Otomotiv Endüstrisi sınıflandırmasına kıyasla “Römork ve Yarı Römork” , “Tarım Traktörü” verileri dahil edilmekte; “Kullanılmış Araçlar” ,”İki Tekerlekli Taşıtlar” , “Demiryolu Taşıtları” hariç tutulmaktadır.

Source: Uludağ Exporters Association – Special Analyze for OSD.Compared to Turkish General Automotive Industry classification, this special analyze includes; farms tractors, trailers and semi-trailers, does not include; used vehicles, two-wheeled vehicles and railway vehicles

Otomobil Pazarında İthalatın Payı (%)
Import Share in P.Car Market (%)



Hafif Ticari Araçlar Pazarında İthalatın Payı (%)
Import Share in LCV Market (%)



Araç Tipleri / Vehicle Types	1	2	3	4	5	6	7	8	9	10	11	12	Toplam / Total
OTOMOBİL - Pass.Car	73.408	75.779	86.252	79.786									315.225
KAMYON - H. Truck	636	999	1.203	911									3.749
KAMYONET - Pick Up	18.119	39.567	36.823	31.215									125.724
OTOBÜS - Bus	508	511	733	366									2.118
MİNİBÜS - Minibus	1.649	4.521	3.947	4.352									14.469
MİDİBÜS - Midibus	13	50	89	58									210
TİCARİ ARAÇLAR TOPLAMI - CV Total	20.925	45.648	42.795	36.902									146.270
TAŞIT ARAÇLARI TOPLAMI - MV Total	94.333	121.427	129.047	116.688									461.495
TRAKTÖR - F.Tractor	802	941	1.155	1.108									4.006
GENEL TOPLAM - Grand Total	95.135	122.368	130.202	117.796									465.501

Otomobil / P.Car

Firmalar / Firms	1	2	3	4	5	6	7	8	9	10	11	12	Toplam / Total
FORD OTOSAN	2.920	2.041	1.787	40	-	-	-	-	-	-	-	-	6.788
HONDA TÜRKİYE	1.251	2.300	814	1.430	-	-	-	-	-	-	-	-	5.795
HYUNDAI ASSAN	10.899	17.471	18.914	17.307	-	-	-	-	-	-	-	-	64.591
OYAK RENAULT	27.028	20.491	24.760	25.707	-	-	-	-	-	-	-	-	97.986
TOFAŞ	9.736	15.502	16.864	13.195	-	-	-	-	-	-	-	-	55.297
TOYOTA	21.574	17.974	23.113	22.107	-	-	-	-	-	-	-	-	84.768
TOPLAM - Total	73.408	75.779	86.252	79.786	-	-	-	-	-	-	-	-	315.225

Kamyonet / Pick-up

Firmalar / Firms	1	2	3	4	5	6	7	8	9	10	11	12	Toplam / Total
FORD OTOSAN	12.083	28.583	25.185	20.777	-	-	-	-	-	-	-	-	86.628
KARSAN	194	271	318	270	-	-	-	-	-	-	-	-	1.053
OTOKAR	-	6	-	-	-	-	-	-	-	-	-	-	6
TOFAŞ	5.842	10.707	11.320	10.168	-	-	-	-	-	-	-	-	38.037
TOPLAM - Total	18.119	39.567	36.823	31.215	-	-	-	-	-	-	-	-	125.724

Minibüs / Minibus

Firmalar / Firms	1	2	3	4	5	6	7	8	9	10	11	12	Toplam / Total
FORD OTOSAN	1.597	4.521	3.922	4.351	-	-	-	-	-	-	-	-	14.391
KARSAN	52	-	25	1	-	-	-	-	-	-	-	-	78
TOPLAM - Total	1.649	4.521	3.947	4.352	-	-	-	-	-	-	-	-	14.469

Kamyon / Truck

Firmalar / Firms	1	2	3	4	5	6	7	8	9	10	11	12	Toplam / Total
FORD OTOSAN	70	99	138	88	-	-	-	-	-	-	-	-	395
KARSAN	-	-	-	-	-	-	-	-	-	-	-	-	-
M. BENZ TÜRK	566	900	1.065	823	-	-	-	-	-	-	-	-	3.354
OTOKAR	-	-	-	-	-	-	-	-	-	-	-	-	-
TOPLAM - Total	636	999	1.203	911	-	-	-	-	-	-	-	-	3.749

Midibüs / Midibus

Firmalar / Firms	1	2	3	4	5	6	7	8	9	10	11	12	Toplam / Total
A.I.O.S.	6	32	54	37	-	-	-	-	-	-	-	-	129
KARSAN	1	3	1	1	-	-	-	-	-	-	-	-	6
OTOKAR	4	15	27	15	-	-	-	-	-	-	-	-	61
TEMSA	2	-	7	5	-	-	-	-	-	-	-	-	14
TOPLAM - Total	13	50	89	58	-	-	-	-	-	-	-	-	210

Otobüs / Bus

Firmalar / Firms	1	2	3	4	5	6	7	8	9	10	11	12	Toplam / Total
A.I.O.S.	3	2	39	24	-	-	-	-	-	-	-	-	68
KARSAN	1	-	23	-	-	-	-	-	-	-	-	-	24
M. BENZ TÜRK	220	238	373	311	-	-	-	-	-	-	-	-	1.142
MAN TÜRKİYE	261	237	251	-	-	-	-	-	-	-	-	-	749
OTOKAR	19	19	27	8	-	-	-	-	-	-	-	-	73
TEMSA	4	15	20	23	-	-	-	-	-	-	-	-	62
TOPLAM - Total	508	511	733	366	-	-	-	-	-	-	-	-	2.118

Traktör / F.Tractor

Firmalar / Firms	1	2	3	4	5	6	7	8	9	10	11	12	Toplam / Total
HATTAT TRAKTÖR	1	24	45	49	-	-	-	-	-	-	-	-	119
TÜRK TRAKTÖR	801	917	1.110	1.059	-	-	-	-	-	-	-	-	3.887
TOPLAM - Total	802	941	1.155	1.108	-	-	-	-	-	-	-	-	4.006

Firmalar / Firms	2017 Toplam / Total	1	2	3	4	5	6	7	8	9	10	11	12	Toplam / Total
Alfa Romeo	320	5	14	13	32	-	-	-	-	-	-	-	-	64
Aston Martin	25	1	1	1	1	-	-	-	-	-	-	-	-	4
Audi	21.585	1.013	1.033	1.552	1.625	-	-	-	-	-	-	-	-	5.223
Bentley	16	-	3	-	-	-	-	-	-	-	-	-	-	3
BMW	19.564	626	1.003	1.586	1.270	-	-	-	-	-	-	-	-	4.485
Citroen	14.709	407	1.128	1.086	615	-	-	-	-	-	-	-	-	3.236
Dacia	41.914	937	1.298	3.600	3.199	-	-	-	-	-	-	-	-	9.034
DS	119	-	-	81	20	-	-	-	-	-	-	-	-	101
Ferrari	16	1	1	2	3	-	-	-	-	-	-	-	-	7
Fiat	2.157	56	102	142	130	-	-	-	-	-	-	-	-	430
Ford	33.671	920	1.440	2.638	2.506	-	-	-	-	-	-	-	-	7.504
Honda	7.250	207	189	469	646	-	-	-	-	-	-	-	-	1.511
Hyundai	26.841	1.282	1.734	2.376	2.555	-	-	-	-	-	-	-	-	7.947
Infiniti	122	3	5	2	2	-	-	-	-	-	-	-	-	12
Jaguar	339	12	20	24	18	-	-	-	-	-	-	-	-	74
Jeep	2.357	101	159	255	295	-	-	-	-	-	-	-	-	810
Kia	10.937	431	514	872	984	-	-	-	-	-	-	-	-	2.801
Lamborghini	7	-	-	-	1	-	-	-	-	-	-	-	-	1
Land Rover	1.879	84	145	162	129	-	-	-	-	-	-	-	-	520
Lexus	101	2	2	8	10	-	-	-	-	-	-	-	-	22
Maserati	76	4	2	6	6	-	-	-	-	-	-	-	-	18
Mazda	1.412	62	76	135	134	-	-	-	-	-	-	-	-	407
Mercedes-Benz	25.588	1.190	1.151	2.031	1.496	-	-	-	-	-	-	-	-	5.868
Mini	1.480	55	82	116	121	-	-	-	-	-	-	-	-	374
Mitsubishi	354	12	9	21	58	-	-	-	-	-	-	-	-	100
Nissan	32.043	767	1.470	2.908	2.021	-	-	-	-	-	-	-	-	7.166
Opel	44.707	1.327	1.568	2.989	3.476	-	-	-	-	-	-	-	-	9.360
Peugeot	29.981	809	1.625	3.038	2.875	-	-	-	-	-	-	-	-	8.347
Porsche	670	43	50	61	70	-	-	-	-	-	-	-	-	224
Renault	37.021	1.013	1.552	1.821	2.617	-	-	-	-	-	-	-	-	7.003
Seat	16.064	663	869	1.226	1.341	-	-	-	-	-	-	-	-	4.099
Skoda	24.679	1.564	2.161	2.911	2.018	-	-	-	-	-	-	-	-	8.654
Smart	105	-	-	4	4	-	-	-	-	-	-	-	-	8
Ssangyong	362	26	25	38	18	-	-	-	-	-	-	-	-	107
Subaru	1.726	86	55	224	165	-	-	-	-	-	-	-	-	530
Suzuki	4.316	67	122	323	253	-	-	-	-	-	-	-	-	765
Toyota	7.297	309	376	294	318	-	-	-	-	-	-	-	-	1.297
Volkswagen	89.688	2.497	3.763	6.561	5.801	-	-	-	-	-	-	-	-	18.622
Volvo	4.470	250	302	503	631	-	-	-	-	-	-	-	-	1.686
GENEL TOPLAM - Grand Total	505.968	16.832	24.049	40.079	37.464	-	-	-	-	-	-	-	-	118.424

Firmalar / Firms	2017 Toplam / Total	1	2	3	4	5	6	7	8	9	10	11	12	Toplam / Total
Citroen	8.023	94	291	706	406	-	-	-	-	-	-	-	-	1.497
Dacia	6.456	254	302	335	337	-	-	-	-	-	-	-	-	1.228
Fiat	6.582	163	252	401	249	-	-	-	-	-	-	-	-	1.065
Ford	4.188	174	142	251	247	-	-	-	-	-	-	-	-	814
Hyundai	2.984	119	85	28	215	-	-	-	-	-	-	-	-	447
Isuzu	302	24	18	19	19	-	-	-	-	-	-	-	-	80
Iveco	2.566	122	148	161	146	-	-	-	-	-	-	-	-	577
Kia	3.591	111	143	207	322	-	-	-	-	-	-	-	-	783
Mercedes-Benz	9.043	480	646	1.121	1.206	-	-	-	-	-	-	-	-	3.453
Mitsubishi	3.527	158	347	403	669	-	-	-	-	-	-	-	-	1.577
Nissan	2.779	95	154	197	165	-	-	-	-	-	-	-	-	611
Peugeot	10.458	178	277	485	517	-	-	-	-	-	-	-	-	1.457
Renault	16.822	512	793	1.087	1.127	-	-	-	-	-	-	-	-	3.519
Ssangyong	255	5	1	6	8	-	-	-	-	-	-	-	-	20
Toyota	4.551	210	267	310	652	-	-	-	-	-	-	-	-	1.439
Volkswagen	27.793	1.630	1.516	1.974	1.989	-	-	-	-	-	-	-	-	7.109
GENEL TOPLAM - Grand Total	109.920	4.329	5.382	7.691	8.274	-	-	-	-	-	-	-	-	25.676