



OTOMOTİV SANAYİİ DERNEĞİ
AUTOMOTIVE MANUFACTURERS ASSOCIATION

Aylık İstatistiki Bilgiler Bülteni Monthly Statistical Bulletin

Temmuz 2010 / July 2010

OSD "OICA" Üyesidir



OSD is a Member of "OICA"

K.KAMYON: AYA 3.5-12 Ton
L. Truck: GVW 3.5-12 Ton
B.KAMYON: AYA 12 Ton'dan Büyük
M. Truck: GVW 12 Ton And Up

**OTOMOTİV SANAYİİ FİRMALARININ
2010 YILI TEMMUZ AYI ÜRETİMLERİ
Production of Automotive Manufacturers
Month of July 2010**

OSD/T10-67

FİRMALAR Companies	OTOMOBİL Pass.Car	%	K.KAMYON L.Truck	%	B.KAMYON Mid.Truck	%	KAMYONET Pick Up	%	OTOBÜS Bus	%	MİNİBÜS Mini-Bus	%	MİDİBÜS Midi-Bus	%	TRAKTÖR F.Tractor	%	TOPLAM Totals
A.I.O.S.			144	48			24	0					63	32			231
B.M.C.					152	10	0	0	28	7	0	0					180
FORD OTOSAN					343	22	12.876	44			1.139	85					14.358
HATTAT															148	5	148
HONDA TÜRKİYE	1.206	3															1.206
HYUNDAI ASSAN	6.600	14															6.600
KARSAN			31	10	62	4	1.864	6			188	14					2.145
M. BENZ TÜRK					1.004	64			190	47							1.194
MAN TÜRKİYE									78	19							78
OTOKAR							26	0	25	6	10	1	75	38			136
OYAK RENAULT	23.693	50															23.693
TEMSA			124	41			48	0	82	20			62	31			316
TOFAŞ	7.925	17					14.375	49									22.300
TOYOTA	8.092	17															8.092
TÜRK TRAKTÖR															3.118	95	3.118
TOPLAM	47.516	100	299	100	1.561	100	29.213	100	403	100	1.337	100	200	100	3.266	100	83.795

K.KAMYON: AYA 3.5-12 Ton
L. Truck: GVW 3.5-12 Ton
B.KAMYON: AYA 12 Ton'dan Büyük
M. Truck: GVW 12 Ton And Up

OTOMOTİV SANAYİİ FİRMALARININ
2010 YILI 7 AYLIK ÜRETİMLERİ
Production of Automotive Manufacturers
7 Months of 2010

OSD/T10-68

FİRMALAR Companies	OTOMOBİL Pass.Car	%	K.KAMYON L.Truck	%	B.KAMYON Mid.Truck	%	KAMYONET Pick Up	%	OTOBÜS Bus	%	MİNİBÜS Mini-Bus	%	MİDİBÜS Midi-Bus	%	TRAKTÖR F.Tractor	%	TOPLAM Totals
A.I.O.S.			609	36			373	0					650	48			1.632
B.M.C.					800	9	0	0	290	10	0	0					1.090
FORD OTOSAN					1.775	21	117.614	48			7.794	95					127.183
HATTAT															1.018	6	1.018
HONDA TÜRKİYE	11.502	3															11.502
HYUNDAI ASSAN	41.202	11															41.202
KARSAN			280	17	245	3	12.585	5			253	3					13.363
M. BENZ TÜRK					5.633	67			1.401	48							7.034
MAN TÜRKİYE									627	22							627
OTOKAR							343	0	162	6	161	2	422	31			1.088
OYAK RENAULT	192.696	54															192.696
TEMSA			799	47			243	0	432	15			270	20			1.744
TOFAŞ	68.594	19					113.792	46									182.386
TOYOTA	46.004	13															46.004
TÜRK TRAKTÖR															16.453	94	16.453
TOPLAM	359.998	100	1.688	100	8.453	100	244.950	100	2.912	100	8.208	100	1.342	100	17.471	100	645.022

K. KAMYON : AYA 3.5-12 Ton
L. Truck : GVW 3.5-12 Ton
B. KAMYON: AYA 12 Ton'dan Büyük
M. Truck : GVW 12 Ton And Up

OTOMOTİV SANAYİNİN
2009/2010 YILLARI ÜRETİM MUKAYESESİ
Production Of Automotive Manufacturers
2009 vs 2010

OSD/T10-69

TİPLER	TEMMUZ AYI ÜRETİMİ July Production		7 AYLIK ÜRETİM 7 Months Production		DEĞİŞİM % Percent Change %	
	2009 YILI	2010 YILI	2009 YILI	2010 YILI	TEMMUZ July	7 AY 7 Months
<i>OTOMOBİL - Pass.Car</i>	54.873	47.516	300.802	359.998	-13	20
<i>TİCARİ ARAÇLAR - Commercial Vehicles</i>	31.682	33.013	179.409	267.553	4	49
* B. KAMYON - M. Truck	569	1.561	2.707	8.453	174	212
* K. KAMYON - L. Truck	48	299	194	1.688	523	770
* KAMYONET - Pick Up	29.417	29.213	165.493	244.950	-1	48
* OTOBÜS - Bus	611	403	3.566	2.912	-34	-18
* MİNİBÜS - Minibus	733	1.337	6.337	8.208	82	30
* MİDİBÜS - Midibus	304	200	1.112	1.342	-34	21
TAŞIT ARAÇLARI TOPLAM - MV Total	86.555	80.529	480.211	627.551	-7	31
<i>TRAKTÖR - F.Tractor</i>	1.610	3.266	8.314	17.471	103	110
GENEL TOPLAM - Grand Total	88.165	83.795	488.525	645.022	-5	32

OTOMOTİV SANAYİİ 2009/2010 ÜRETİMİ
Automotive Manufacturers 2009/2010 Production

TİPLER - Types	YILLAR Years	OCAK January	ŞUBAT February	MART March	NİSAN April	MAYIS May	HAZİRAN June	TEMMUZ July	AĞUSTOS August	EYLÜL September	EKİM October	KASIM November	ARALIK December	TOPLAM Total
OTOMOBİL - Pass.Car														
	2009	23.838	30.192	37.125	48.566	52.631	53.577	54.873	23.805	50.320	45.452	41.635	48.917	510.931
	2010	46.810	46.365	55.755	51.459	57.433	54.660	47.516	0	0	0	0	0	359.998
B.KAMYON - M.Truck														
	2009	93	383	401	350	345	566	569	825	1.147	1.018	794	912	7.403
	2010	630	687	1.107	1.256	1.424	1.788	1.561	0	0	0	0	0	8.453
K.KAMYON - L.Truck														
	2009	146	0	0	0	0	0	48	70	74	84	203	218	843
	2010	0	85	289	197	388	430	299	0	0	0	0	0	1.688
KAMYONET - Pick Up														
	2009	13.519	13.160	19.944	25.081	32.227	32.145	29.417	23.407	32.963	34.633	32.228	41.320	330.044
	2010	27.990	33.897	39.542	35.118	37.093	42.097	29.213	0	0	0	0	0	244.950
OTOBÜS - Bus														
	2009	554	491	525	485	464	436	611	598	423	437	430	477	5.931
	2010	262	416	441	491	441	458	403	0	0	0	0	0	2.912
MİNİBÜS - Minibus														
	2009	469	621	672	974	1.362	1.506	733	535	1.219	1.155	1.154	1.429	11.829
	2010	824	951	1.163	1.014	1.159	1.760	1.337	0	0	0	0	0	8.208
MİDİBÜS - Midibus														
	2009	156	53	225	90	95	189	304	275	125	366	249	497	2.624
	2010	49	120	236	282	254	201	200	0	0	0	0	0	1.342
TRAKTÖR - Agric.Trac														
	2009	988	1.322	955	963	1.041	1.435	1.610	843	1.111	1.511	1.463	1.619	14.861
	2010	1.793	1.943	2.387	2.445	2.795	2.842	3.266	0	0	0	0	0	17.471
TOPLAM - Total														
	2009	39.763	46.222	59.847	76.509	88.165	89.854	88.165	50.358	87.382	84.656	78.156	95.389	884.466
	2010	78.358	84.464	100.920	92.262	100.987	104.236	83.795	0	0	0	0	0	645.022

OTOMOTİV SANAYİİ FİRMALARININ AYLIK ÜRETİMLERİ ve ÜRETİM PAYLARI - 2010
Production Of Automotive Manufacturers - 2010

TİPLER - Types	OCAK January	ŞUBAT February	MART March	NİSAN April	MAYIS May	HAZİRAN June	TEMMUZ July	AĞUSTOS August	EYLÜL September	EKİM October	KASIM November	ARALIK December	TOPLAM Total
OTOMOBİL - Pass.Car													
HONDA TÜRKİYE	1.620	1.620	1.683	1.707	1.620	2.046	1.206	0	0	0	0	0	11.502
Pay (%)	3	3	3	3	3	4	3						3
HYUNDAI ASSAN	4.000	3.500	5.102	5.100	8.000	8.900	6.600	0	0	0	0	0	41.202
Pay (%)	9	8	9	10	14	16	14						11
OYAK RENAULT	24.833	26.513	30.072	29.091	29.127	29.367	23.693	0	0	0	0	0	192.696
Pay (%)	53	57	54	57	51	54	50						54
TOFAŞ	8.618	8.853	11.001	10.840	11.745	9.612	7.925	0	0	0	0	0	68.594
Pay (%)	18	19	20	21	20	18	17						19
TOYOTA	7.739	5.879	7.897	4.721	6.941	4.735	8.092	0	0	0	0	0	46.004
Pay (%)	17	13	14	9	12	9	17						13
TOPLAM	46.810	46.365	55.755	51.459	57.433	54.660	47.516	0	0	0	0	0	359.998
Pay (%)	60	55	55	56	57	52	57						56
B.KAMYON - M.Truck													
B.M.C.	20	84	103	120	100	221	152	0	0	0	0	0	800
Pay (%)	3	12	9	10	7	12	10						9
FORD OTOSAN	160	102	192	236	338	404	343	0	0	0	0	0	1.775
Pay (%)	25	15	17	19	24	23	22						21
KARSAN	1	25	49	38	43	27	62	0	0	0	0	0	245
Pay (%)	0	4	4	3	3	2	4						3
M. BENZ TÜRK	449	476	763	862	943	1.136	1.004	0	0	0	0	0	5.633
Pay (%)	71	69	69	69	66	64	64						67
TOPLAM	630	687	1.107	1.256	1.424	1.788	1.561	0	0	0	0	0	8.453
Pay (%)	1	1	1	1	1	2	2						1
K.KAMYON - L.Truck													
A.I.O.S.	0	36	121	2	96	210	144	0	0	0	0	0	609
Pay (%)	#Num!	42	42	1	25	49	48						36
KARSAN	0	0	0	59	140	50	31	0	0	0	0	0	280
Pay (%)	#Num!	0	0	30	36	12	10						17
TEMSA	0	49	168	136	152	170	124	0	0	0	0	0	799
Pay (%)	#Num!	58	58	69	39	40	41						47

TİPLER - Types	OCAK January	ŞUBAT February	MART March	NİSAN April	MAYIS May	HAZİRAN June	TEMMUZ July	AĞUSTOS August	EYLÜL September	EKİM October	KASIM November	ARALIK December	TOPLAM Total
TOPLAM	0	85	289	197	388	430	299	0	0	0	0	0	1.688
Pay (%)	0	0	0	0	0	0	0						0
KAMYONET - Pick Up													
A.I.O.S.	0	5	60	170	104	10	24	0	0	0	0	0	373
Pay (%)	0	0	0	0	0	0	0						0
B.M.C.	0	0	0	0	0	0	0	0	0	0	0	0	0
Pay (%)	0	0	0	0	0	0	0						0
FORD OTOSAN	10.593	15.872	19.349	16.083	20.101	22.740	12.876	0	0	0	0	0	117.614
Pay (%)	38	47	49	46	54	54	44						48
KARSAN	804	1.783	1.977	2.460	1.758	1.939	1.864	0	0	0	0	0	12.585
Pay (%)	3	5	5	7	5	5	6						5
OTOKAR	73	121	62	25	8	28	26	0	0	0	0	0	343
Pay (%)	0	0	0	0	0	0	0						0
TEMSA	0	51	24	48	48	24	48	0	0	0	0	0	243
Pay (%)	0	0	0	0	0	0	0						0
TOFAŞ	16.520	16.065	18.070	16.332	15.074	17.356	14.375	0	0	0	0	0	113.792
Pay (%)	59	47	46	47	41	41	49						46
TOPLAM	27.990	33.897	39.542	35.118	37.093	42.097	29.213	0	0	0	0	0	244.950
Pay (%)	36	40	39	38	37	40	35						38
OTOBÜS - Bus													
B.M.C.	26	102	36	32	24	42	28	0	0	0	0	0	290
Pay (%)	10	25	8	7	5	9	7						10
MAN TÜRKİYE	65	97	90	124	102	71	78	0	0	0	0	0	627
Pay (%)	25	23	20	25	23	16	19						22
M. BENZ TÜRK	99	161	235	231	241	244	190	0	0	0	0	0	1.401
Pay (%)	38	39	53	47	55	53	47						48
OTOKAR	12	11	27	51	21	15	25	0	0	0	0	0	162
Pay (%)	5	3	6	10	5	3	6						6
TEMSA	60	45	53	53	53	86	82	0	0	0	0	0	432
Pay (%)	23	11	12	11	12	19	20						15
TOPLAM	262	416	441	491	441	458	403	0	0	0	0	0	2.912
Pay (%)	0	0	0	1	0	0	0						0
MINİBÜS - Minibus													
B.M.C.	0	0	0	0	0	0	0	0	0	0	0	0	0
Pay (%)	0	0	0	0	0	0	0						0

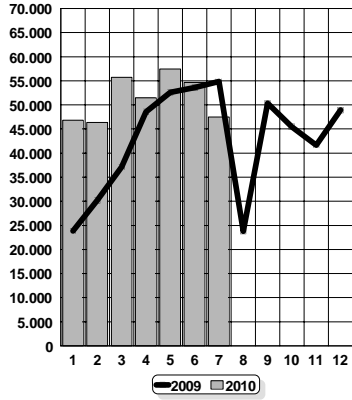
OTOMOTİV SANAYİİ KAPASİTE KULLANIMI - 2010
Capacity Usage of Automotive Manufacturers - 2010

TİPLER - Types	TEMMUZ July		7 AY 7 Months		KAPASİTE KULLANIM ORANI (%) Capacity Usage (%)	
	KAPASİTE Capacity	ÜRETİM Production	KAPASİTE Capacity	ÜRETİM Production	TEMMUZ July	7 AY 7 Months
* HAFİF ARAÇLAR - Light Vehicles	120.269	78.066	841.883	613.156	65	73
KAMYON - Truck	4.267	1.860	29.869	10.141	44	34
OTOBÜS - Bus	708	403	4.956	2.912	57	59
MİDİBÜS - Midibus	1.061	200	7.427	1.342	19	18
TRAKTÖR - F.Tractor	3.792	3.266	26.544	17.471	86	66
TOPLAM - Total	130.097	83.795	910.679	645.022	64	71

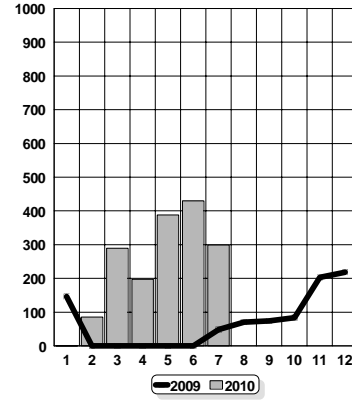
* Hafif Araçlara otomobil, kamyonet ve minibüs dahildir.

* Light Vehicles include pass.car, pick-up and minibus.

OTOMOBİL/Pass.Car

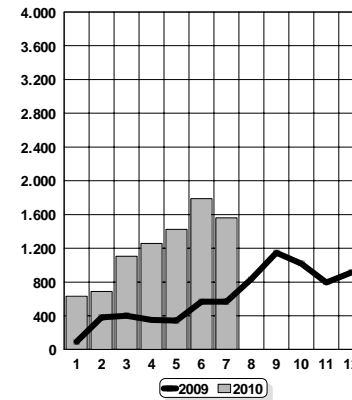


K. KAMYON/L. Truck

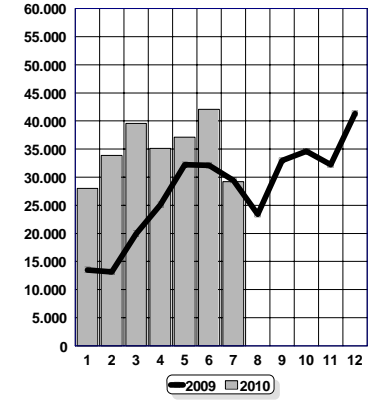


OSD/T10-74

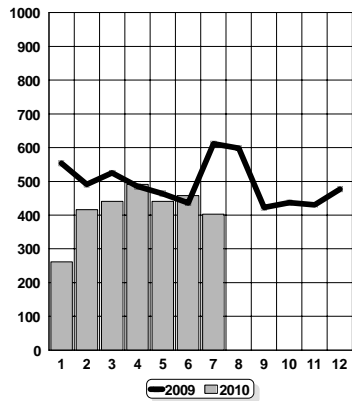
B. KAMYON/M. Truck



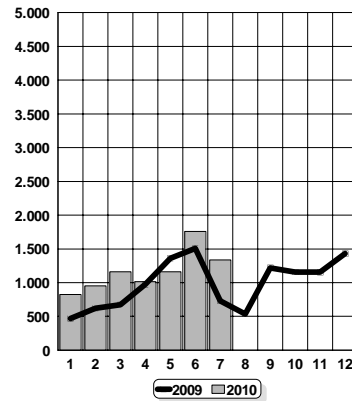
KAMYONET/Pick-Up



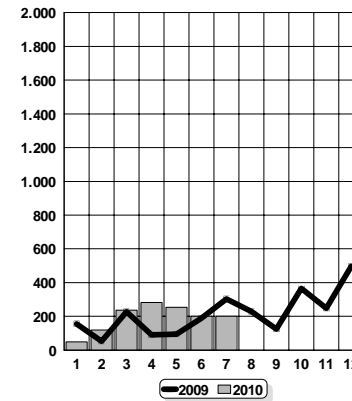
OTOBÜS/Bus (26 and Up Pass.)



MİNİBÜS/Minibus (Up to 14 Pass.)



MİDİBÜS/Midibus (15-25 Pass.)



TRAKTÖR/Agr. Tractor

