



OTOMOTİV SANAYİİ DERNEĐİ
AUTOMOTIVE MANUFACTURERS ASSOCIATION

OTOMOTİV SEKTÖRÜ AYLIK DEĐERLENDİRME RAPORU ŞUBAT 2020

AUTOMOTIVE INDUSTRY MONTHLY REPORT
February 2020

OSD "OICA" Üyesidir @OICA OSD is a Member of "OICA"

	2 - 2019	2 - 2020	%	1 - 2 / 2019	1 - 2 / 2020	%	3/2018 - 2/2019	3/2019 - 2/2020	%
Otomobil Üretimi/P.Cars Production	80.077	87.589	9,4	151.474	162.985	7,6	998.560	994.153	-0,4
Toplam Üretim/Total Production	119.473	127.882	7,0	229.327	237.665	3,6	1.513.856	1.469.582	-2,9
Otomobil Pazarı/P.Cars Market	19.205	37.727	96,4	30.184	59.743	97,9	453.993	416.815	-8,2
Toplam Pazar/Total Market	25.569	48.972	91,5	40.416	77.095	90,8	596.673	528.626	-11,4
Otomobil İthalatı/P.Cars Import	11.614	22.570	94,3	18.390	36.260	97,2	300.425	247.948	-17,5
Toplam İthalat/Total Import	14.601	27.393	87,6	23.009	43.676	89,8	368.654	297.736	-19,2
Otomobil İhracatı/P.Cars Export	69.340	73.844	6,5	128.147	134.282	4,8	854.107	834.879	-2,3
Toplam İhracat/Total Export	106.355	102.615	-3,5	199.783	192.577	-3,6	1.302.937	1.245.380	-4,4
Otomobil İhracatı(\$)/P.Cars Export (\$)	952.769.773	1.080.129.632	13,4	1.764.830.420	2.113.035.037	19,7	12.167.301.855	12.213.019.933	0,4
Toplam İhracat(\$)/Total Export (\$)*	2.575.985.254	2.570.716.688	-0,2	4.956.168.707	5.034.745.081	1,6	32.006.580.055	31.309.231.980	-2,2

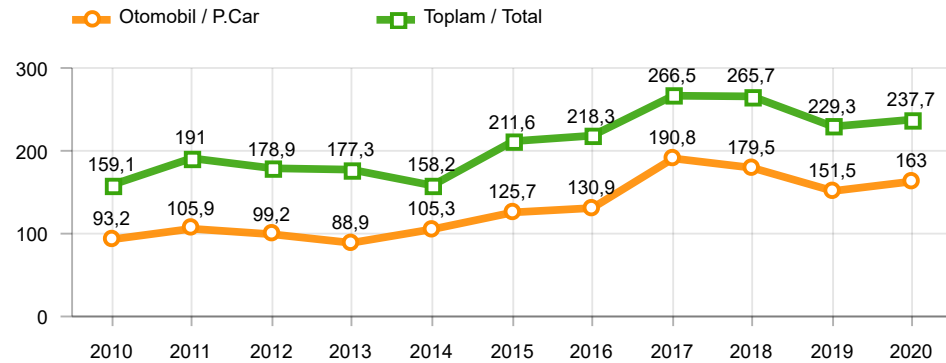
Parametreler/Parameters	2 - 2019	2 - 2020	%	1 - 2 / 2019	1 - 2 / 2020	%	3/2018 - 2/2019	3/2019 - 2/2020	%
ÜFE / PPI	0,1	0,5	-	0,6	2,3	-	30,0	14,2	-
TÜFE / CPI	0,2	0,4	-	1,2	1,7	-	17,9	13,9	-
Sanayi Endeksi / Industry Index	0,6	0,7	-	1,1	2,5	-	29,0	13,2	-
Dolar \$ ** (1 birim)	5,3	6,1	16,1	5,3	6,0	14,6	5,0	5,8	14,7
Euro € ** (1 birim)	6,0	6,7	12,2	6,0	6,7	10,9	5,9	6,4	9,7
Japon Yeni ¥ ** (100 birim)	4,8	5,6	17,4	4,8	5,5	15,2	4,5	5,3	16,5

*Toplam Sanayi / Total Industry Including Components

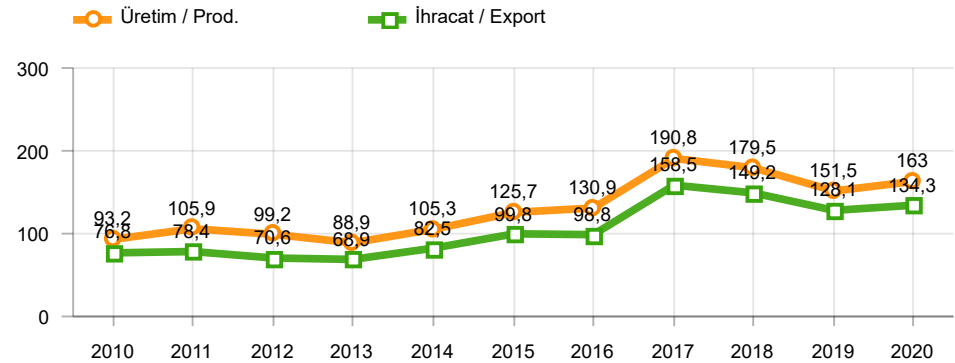
** Ortalama Değerler / Average Values

Araç Tipleri / Types	2 / 2019	2 / 2020	2 % Değişim	1-2 / 2019	1-2 / 2020	1-2 % Değişim
OTOMOBİL / Pass.Car	80.077	87.589	9,4	151.474	162.985	7,6
OTOMOBİL Toplam / Pass.Car Total	80.077	87.589	9,4	151.474	162.985	7,6
B.KAMYON / H. Truck	1.660	1.628	-1,9	3.054	2.200	-28,0
K.KAMYON / L. Truck	30	120	300,0	30	120	300,0
KAMYONET / Pick Up	31.524	32.255	2,3	62.642	60.452	-3,5
OTOBÜS / Bus	677	770	13,7	1.426	1.435	0,6
MİNİBÜS / Minibus	5.370	5.322	-0,9	10.432	10.207	-2,2
MİDİBÜS / Midibus	135	198	46,7	269	266	-1,1
TİCARİ ARAÇLAR Toplam / Commercial Vehicles Total	39.396	40.293	2,3	77.853	74.680	-4,1
TAŞIT ARAÇLARI Toplam / Motor Vehicles Total	119.473	127.882	7,0	229.327	237.665	3,6
TRAKTÖR / F.Tractor	1.635	2.750	68,2	2.696	5.265	95,3
TRAKTÖR Toplam / F.Tractor Total	1.635	2.750	68,2	2.696	5.265	95,3
GENEL TOPLAM / Grand Total	121.108	130.632	7,9	232.023	242.930	4,7

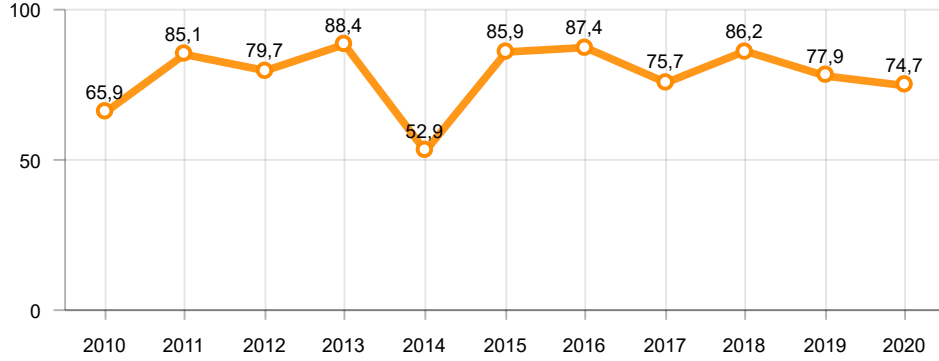
Toplam Üretim ve Otomobil Üretimi (x1000)(OCAK - ŞUBAT)
Total & P.Cars Production (x1000)(January - February)



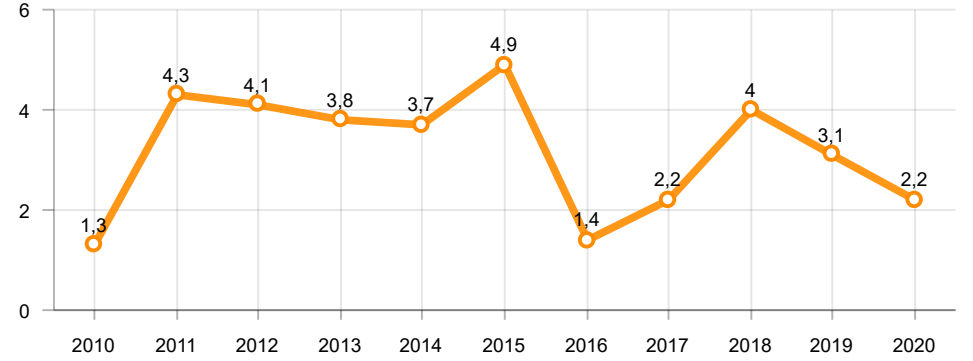
Otomobil Üretimi ve İhracat (x1000)(OCAK - ŞUBAT)
P.Cars Production & Exports (x1000)(January - February)



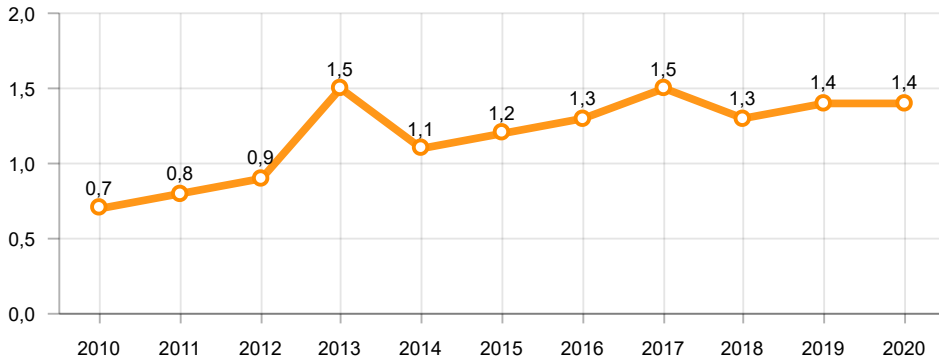
Ticari Araç Üretimi (x1000)(OCAK - ŞUBAT)
Commercial Vehicle Production (x1000)(January - February)



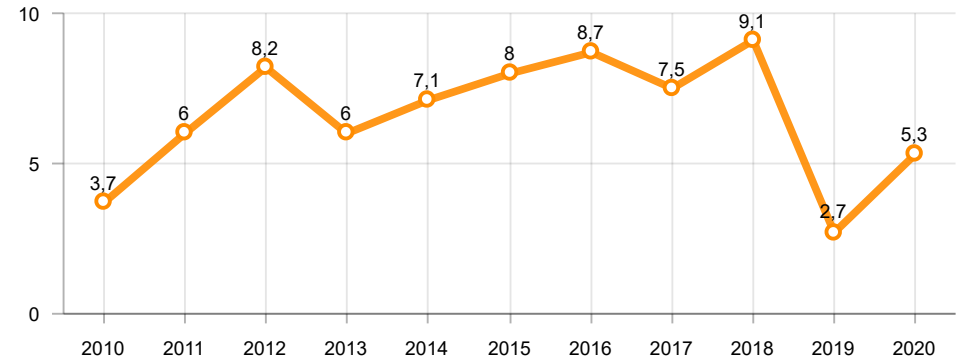
Büyük Kamyon Üretimi (x1000)(OCAK - ŞUBAT)
Heavy Truck Production (x1000)(January - February)

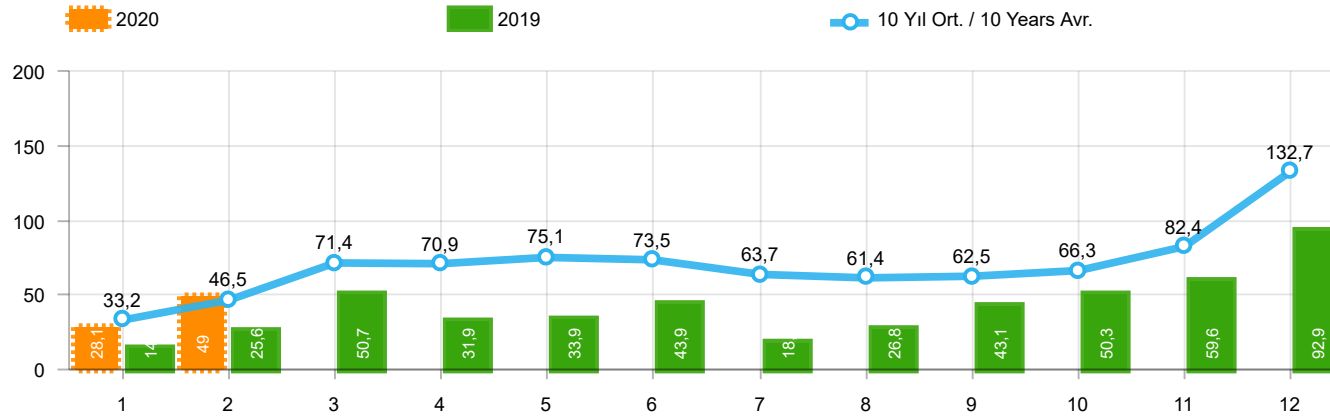


Otobüs Üretimi (x1000)(OCAK - ŞUBAT)
Bus Production (x1000)(January - February)



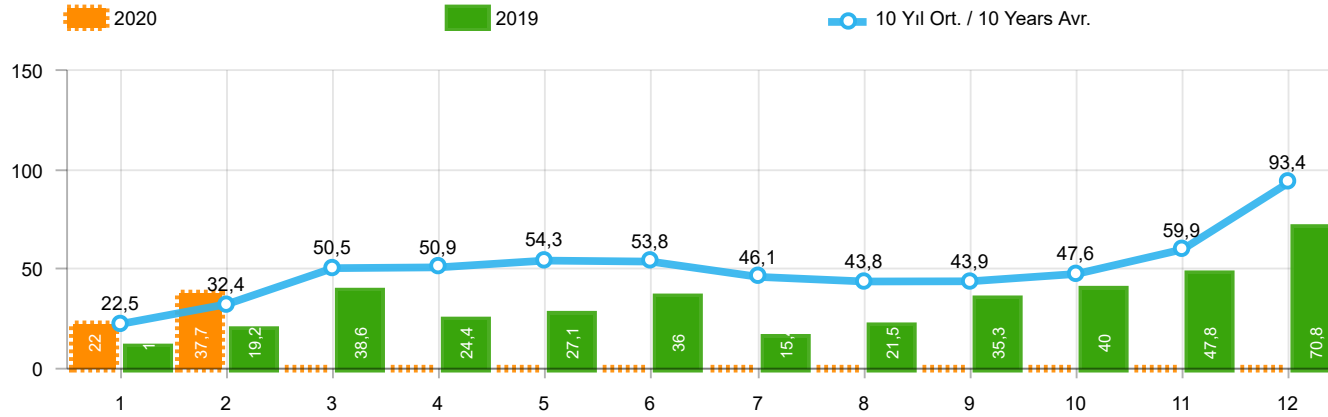
Traktör Üretimi (x1000)(OCAK - ŞUBAT)
F. Tractor Production (x1000)(January - February)





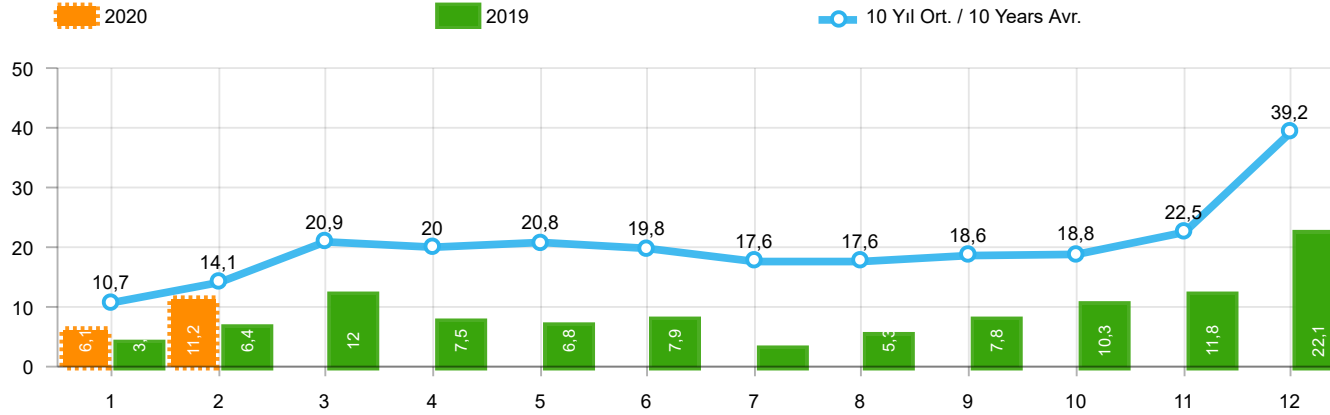
Aylar / Months	10 Yıl Ort. / 10 Years Avr.	2020	%
1	33.233	28.123	-15,4
2	46.483	48.972	5,4
TOPLAM / TOTAL	79.716	77.095	-3,3

Yıl / Year	1	2	3	4	5	6	7	8	9	10	11	12	1-2 Toplam / Total	Toplam / Total	1-2 Yerli / Local	1-2 İthal / Import	İthal Oran / Import %
2010	21.070	32.331	54.019	57.241	61.837	63.511	64.011	64.961	67.040	76.753	77.488	155.234	53.401	795.496	21.478	31.923	59,8
2011	47.759	62.586	84.045	82.782	85.862	85.992	65.658	61.645	64.313	73.227	67.150	134.468	110.345	915.487	45.175	65.170	59,1
2012	31.552	44.138	69.242	66.559	75.195	75.108	65.444	60.982	73.501	62.933	75.203	121.442	75.690	821.299	30.958	44.732	59,1
2013	37.563	51.133	72.943	77.265	85.835	78.043	75.152	67.662	71.388	60.690	83.470	136.048	88.696	897.192	30.647	58.049	65,4
2014	34.751	37.659	51.312	57.113	62.447	64.295	62.770	63.303	70.764	69.742	84.368	154.843	72.410	813.367	24.618	47.792	66,0
2015	37.256	59.221	89.765	96.182	85.804	91.071	87.358	85.244	67.181	67.086	88.431	164.464	96.477	1.019.063	37.750	58.727	60,9
2016	34.369	54.840	85.932	87.748	97.090	94.666	59.732	73.654	69.413	85.666	125.462	145.706	89.209	1.014.278	31.439	57.770	64,8
2017	36.640	48.585	76.178	78.231	88.066	85.820	84.727	74.818	74.046	94.439	103.772	141.507	85.225	986.829	32.728	52.497	61,6
2018	36.525	48.768	79.600	73.886	74.996	52.788	54.194	35.137	23.915	22.321	59.406	80.014	85.293	641.550	33.670	51.623	60,5
2019	14.847	25.569	50.651	31.944	33.947	43.899	18.442	26.832	43.068	50.288	59.575	92.885	40.416	491.947	17.407	23.009	56,9
2020	28.123	48.972											77.095	77.095	33.419	43.676	56,7



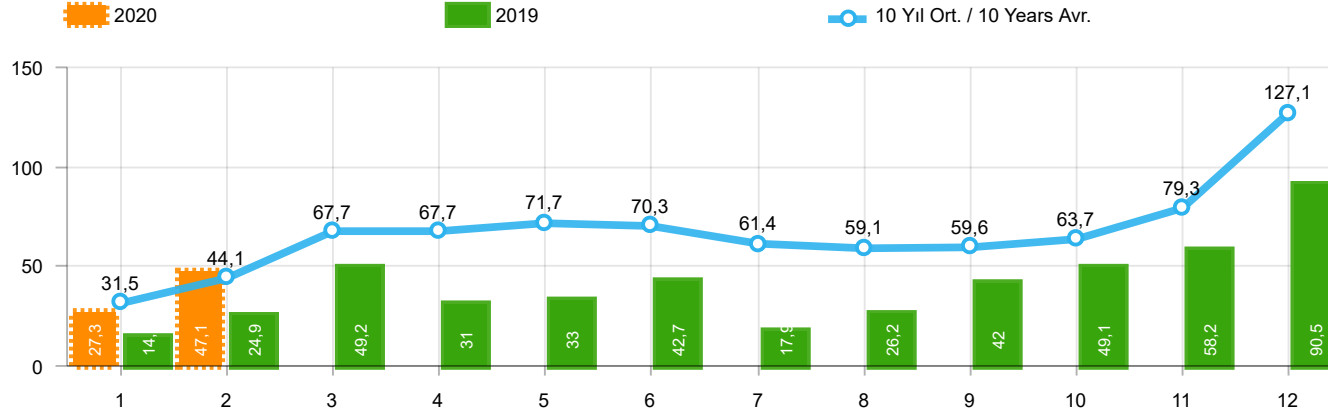
Aylar / Months	10 Yıl Ort / 10 Years Avr.	2020	%
1	22.488	22.016	-2,1
2	32.399	37.727	16,4
TOPLAM / TOTAL	54.887	59.743	8,9

Yıl / Year	1	2	3	4	5	6	7	8	9	10	11	12	1-2 Toplam / Total	Toplam / Total	1-2 Yerli / Local	1-2 İthal / Import	İthal Oran / Import %
2010	12.594	20.651	33.958	36.549	40.467	42.086	41.399	42.222	42.477	47.859	50.061	99.461	33.245	509.784	9.828	23.417	70,4
2011	29.868	39.004	54.023	53.835	56.302	56.714	43.518	38.875	39.964	47.508	44.951	88.957	68.872	593.519	21.103	47.769	69,4
2012	21.077	29.189	47.270	45.645	50.460	50.849	44.531	41.236	49.360	43.440	52.297	80.926	50.266	556.280	16.911	33.355	66,4
2013	25.835	36.814	51.785	56.999	62.383	58.290	55.712	51.611	52.925	46.985	64.117	101.199	62.649	664.655	14.658	47.991	76,6
2014	24.368	27.167	37.812	42.769	46.379	47.278	46.602	45.131	49.262	50.814	59.695	110.054	51.535	587.331	12.805	38.730	75,2
2015	24.498	40.817	61.676	70.211	62.878	67.766	64.218	61.753	47.088	47.954	62.397	114.340	65.315	725.596	18.514	46.801	71,7
2016	23.358	40.588	63.975	65.618	73.832	71.111	45.566	53.977	51.340	63.746	95.783	108.044	63.946	756.938	17.491	46.455	72,6
2017	25.689	34.658	55.616	57.998	65.799	66.164	62.384	54.890	53.423	70.488	75.956	99.694	60.347	722.759	19.571	40.776	67,6
2018	26.611	35.901	59.798	55.108	57.227	41.225	42.024	26.976	17.595	16.809	46.204	60.843	62.512	486.321	21.631	40.881	65,4
2019	10.979	19.205	38.628	24.416	27.126	36.024	15.398	21.544	35.308	39.996	47.803	70.829	30.184	387.256	11.794	18.390	60,9
2020	22.016	37.727											59.743	59.743	23.483	36.260	60,7



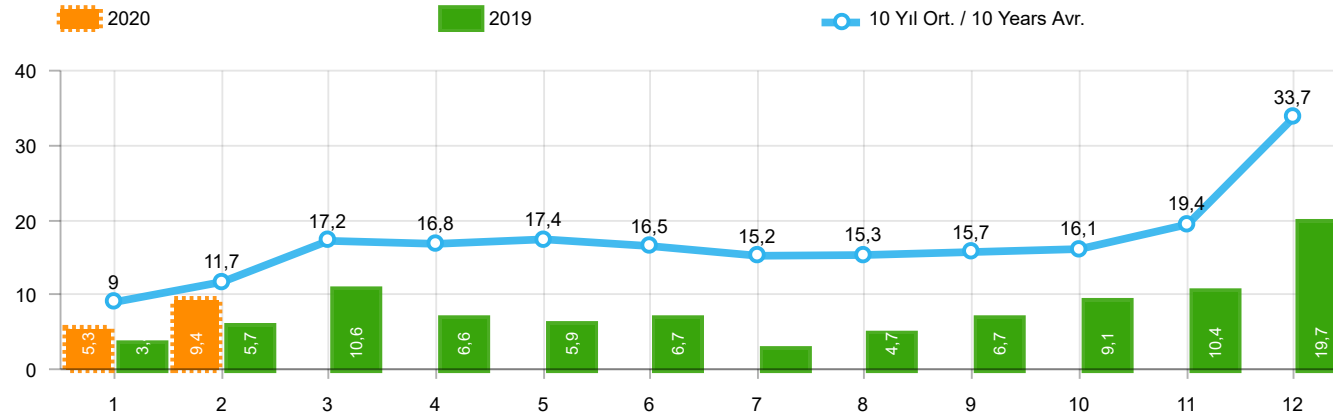
Aylar / Months	10 Yıl Ort. / 10 Years Avr.	2020	%
1	10.746	6.107	-43,2
2	14.084	11.245	-20,2
TOPLAM / TOTAL	24.829	17.352	-30,1

Yıl / Year	1	2	3	4	5	6	7	8	9	10	11	12	1-2 Toplam / Total	Toplam / Total	1-2 Yerli / Local	1-2 İthal / Import	İthal Oran / Import %
2010	8.476	11.680	20.061	20.692	21.370	21.425	22.612	22.739	24.563	28.894	27.427	55.773	20.156	285.712	11.650	8.506	42,2
2011	17.891	23.582	30.022	28.947	29.560	29.278	22.140	22.770	24.349	25.719	22.199	45.511	41.473	321.968	24.072	17.401	42,0
2012	10.475	14.949	21.972	20.914	24.735	24.259	20.913	19.746	24.141	19.493	22.906	40.516	25.424	265.019	14.047	11.377	44,7
2013	11.728	14.319	21.158	20.266	23.452	19.753	19.440	16.051	18.463	13.705	19.353	34.849	26.047	232.537	15.989	10.058	38,6
2014	10.383	10.492	13.500	14.344	16.068	17.017	16.168	18.172	21.502	18.928	24.673	44.789	20.875	226.036	11.813	9.062	43,4
2015	12.758	18.404	28.089	25.971	22.926	23.305	23.140	23.491	20.093	19.132	26.034	50.124	31.162	293.467	19.236	11.926	38,3
2016	11.011	14.252	21.957	22.130	23.258	23.555	14.166	19.677	18.073	21.920	29.679	37.662	25.263	257.340	13.948	11.315	44,8
2017	10.951	13.927	20.562	20.233	22.267	19.656	22.343	19.928	20.623	23.951	27.816	41.813	24.878	264.070	13.157	11.721	47,1
2018	9.914	12.867	19.802	18.778	17.769	11.563	12.170	8.161	6.320	5.512	13.202	19.171	22.781	155.229	12.039	10.742	47,2
2019	3.868	6.364	12.023	7.528	6.821	7.875	3.044	5.288	7.760	10.292	11.772	22.056	10.232	104.691	5.613	4.619	45,1
2020	6.107	11.245											17.352	17.352	9.936	7.416	42,7



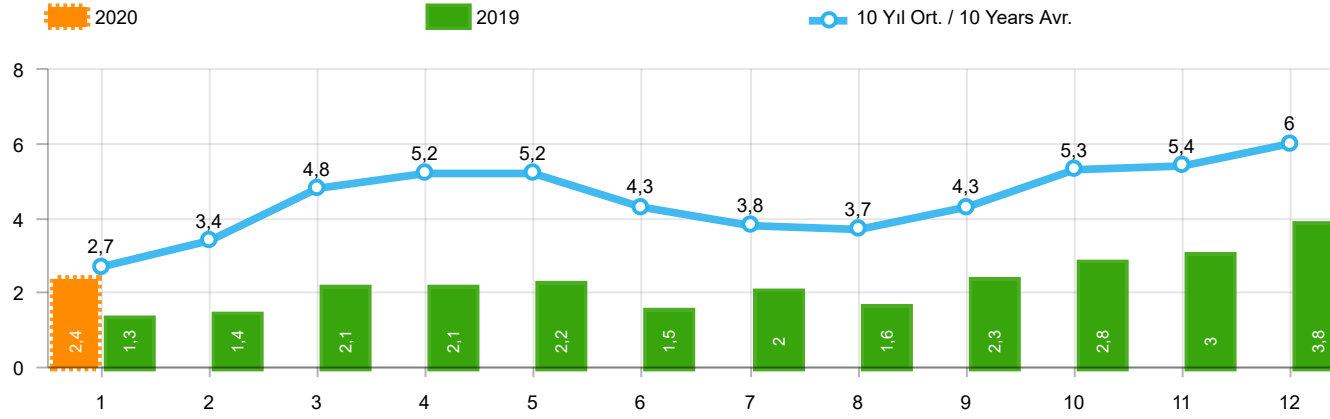
Aylar / Months	10 Yıl Ort / 10 Years Avr.	2020	%
1	31.483	27.273	-13,4
2	44.149	47.122	6,7
TOPLAM / TOTAL	75.632	74.395	-1,6

Yıl / Year	1	2	3	4	5	6	7	8	9	10	11	12	1-2 Toplam / Total	Toplam / Total	1-2 Yerli / Local	1-2 İthal / Import	İthal Oran / Import %	
2010	20.095	31.172	51.769	54.946	59.377	60.896	61.345	61.764	63.814	73.404	73.962	148.369	51.267	760.913	19.756	31.511	61,5	
2011	44.892	58.663	78.403	77.695	80.646	81.573	63.044	58.406	60.129	69.421	63.657	127.910	103.555	864.439	40.483	63.072	60,9	
2012	29.545	41.324	64.884	62.949	70.863	71.067	62.304	58.148	69.629	59.938	71.710	115.400	70.869	777.761	27.386	43.483	61,4	
2013	35.523	48.307	68.774	73.575	81.468	74.096	71.596	65.043	67.963	58.014	79.301	129.718	83.830	853.378	26.842	56.988	68,0	
2014	32.670	35.021	47.581	53.305	58.121	60.163	59.907	60.199	66.531	66.573	80.621	146.989	67.691	767.681	20.779	46.912	69,3	
2015	34.615	55.331	83.302	91.602	81.542	86.158	83.836	82.577	64.025	64.255	84.601	156.173	89.946	968.017	32.531	57.415	63,8	
2016	32.713	52.825	82.948	84.887	93.904	91.540	58.533	71.556	67.593	83.000	122.309	141.912	85.538	983.720	28.901	56.637	66,2	
2017	35.323	46.965	73.802	75.988	85.422	83.658	82.297	72.536	71.352	91.752	100.859	136.240	82.288	956.194	30.474	51.814	63,0	
2018	35.076	47.009	76.345	71.126	72.755	51.037	52.734	34.346	23.028	21.571	58.204	77.706	82.085	620.937	31.493	50.592	61,6	
2019	14.373	24.875	49.221	30.971	33.016	42.688	17.927	26.246	41.992	49.075	58.176	90.500	39.248	479.060	16.584	22.664	57,7	
2020	27.273	47.122												74.395	74.395	31.446	42.949	57,7



Aylar / Months	10 Yıl Ort / 10 Years Avr.	2020	%
1	8.995	5.257	-41,6
2	11.750	9.395	-20,0
TOPLAM / TOTAL	20.745	14.652	-29,4

Yıl / Year	1	2	3	4	5	6	7	8	9	10	11	12	1-2 Toplam / Total	Toplam / Total	1-2 Yerli / Local	1-2 İthal / Import	İthal Oran / Import %
2010	7.501	10.521	17.811	18.397	18.910	18.810	19.946	19.542	21.337	25.545	23.901	48.908	18.022	251.129	9.928	8.094	44,9
2011	15.024	19.659	24.380	23.860	24.344	24.859	19.526	19.531	20.165	21.913	18.706	38.953	34.683	270.920	19.380	15.303	44,1
2012	8.468	12.135	17.614	17.304	20.403	20.218	17.773	16.912	20.269	16.498	19.413	34.474	20.603	221.481	10.475	10.128	49,2
2013	9.688	11.493	16.989	16.576	19.085	15.806	15.884	13.432	15.038	11.029	15.184	28.519	21.181	188.723	12.184	8.997	42,5
2014	8.302	7.854	9.769	10.536	11.742	12.885	13.305	15.068	17.269	15.759	20.926	36.935	16.156	180.350	7.974	8.182	50,6
2015	10.117	14.514	21.626	21.391	18.664	18.392	19.618	20.824	16.937	16.301	22.204	41.833	24.631	242.421	14.017	10.614	43,1
2016	9.355	12.237	18.973	19.269	20.072	20.429	12.967	17.579	16.253	19.254	26.526	33.868	21.592	226.782	11.410	10.182	47,2
2017	9.634	12.307	18.186	17.990	19.623	17.494	19.913	17.646	17.929	21.264	24.903	36.546	21.941	233.435	10.903	11.038	50,3
2018	8.465	11.108	16.547	16.018	15.528	9.812	10.710	7.370	5.433	4.762	12.000	16.863	19.573	134.616	9.862	9.711	49,6
2019	3.394	5.670	10.593	6.555	5.890	6.664	2.529	4.702	6.684	9.079	10.373	19.671	9.064	91.804	4.790	4.274	47,2
2020	5.257	9.395											14.652	14.652	7.963	6.689	45,7



Aylar / Months	10 Yıl Ort / 10 Years Avr.	2020	%
1	2.729	2.425	-11,1
TOPLAM / TOTAL	2.729	2.425	-11,1

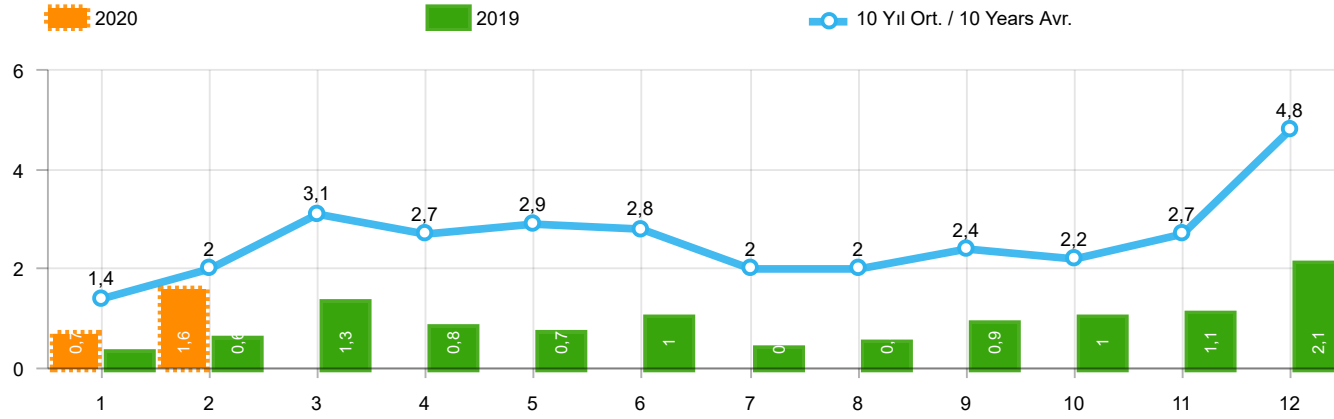
Yıl / Year	1	2	3	4	5	6	7	8	9	10	11	12	1-1 Toplam / Total	Toplam / Total
2010	1.111	1.991	2.330	3.039	2.567	2.638	1.965	3.019	2.806	4.424	3.978	6.168	1.111	36.036
2011	2.975	5.242	5.927	5.358	6.016	6.335	4.534	4.051	4.140	5.828	4.943	4.992	2.975	60.341
2012	2.362	1.983	4.348	6.579	6.273	4.569	3.837	3.158	3.618	4.027	4.807	4.757	2.362	50.318
2013	2.161	2.432	4.005	4.585	5.616	3.136	4.574	3.408	4.935	4.762	5.781	6.891	2.161	52.286
2014	2.169	3.512	4.476	4.905	5.094	5.028	4.233	4.920	5.619	5.743	6.250	7.409	2.169	59.358
2015	3.124	3.984	5.460	6.383	6.078	5.748	4.677	5.044	4.765	7.049	6.898	7.564	3.124	66.774
2016	3.739	4.731	7.067	6.546	6.575	5.543	3.833	5.134	4.945	7.372	7.090	7.603	3.739	70.178
2017	3.974	4.964	6.773	6.780	7.057	5.356	5.003	4.396	6.064	7.734	7.457	7.351	3.974	72.909
2018	4.362	4.179	5.925	5.216	4.584	3.146	3.654	2.587	3.541	3.698	3.578	3.886	4.362	48.356
2019	1.311	1.401	2.143	2.126	2.229	1.538	2.039	1.579	2.284	2.828	3.037	3.782	1.311	26.297
2020	2.425												2.425	2.425

Kaynak: TÜİK trafik kayıtları.

Rakamlar, son iki model yılına ait traktör tescillerinden oluşmaktadır.

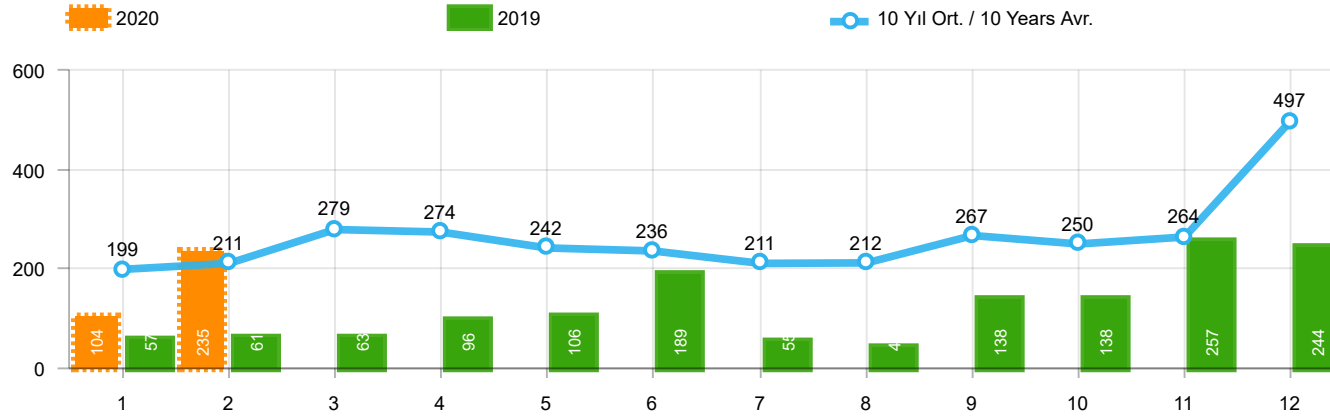
Source: Turkish Statistical Institute – Traffic registrations

Data represents the last two model year's farm tractors registration figures



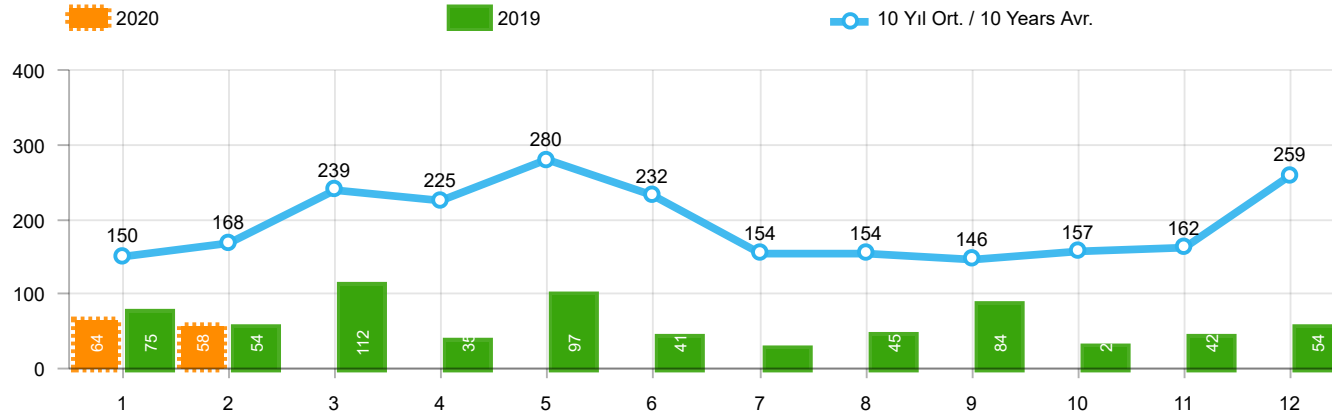
Aylar / Months	10 Yıl Ort / 10 Years Avr.	2020	%
1	1.402	682	-51,4
2	1.955	1.557	-20,4
TOPLAM / TOTAL	3.357	2.239	-33,3

Yıl / Year	1	2	3	4	5	6	7	8	9	10	11	12	1-2 Toplam / Total	Toplam / Total	1-2 Yerli / Local	1-2 İthal / Import	İthal Oran / Import %
2010	768	960	1.950	1.949	2.140	2.314	2.403	2.754	2.864	3.001	3.231	6.158	1.728	30.492	1.322	406	23,5
2011	2.651	3.544	5.142	4.503	4.563	3.852	2.261	2.745	3.784	3.400	3.149	5.712	6.195	45.306	4.108	2.087	33,7
2012	1.703	2.454	3.866	3.209	3.678	3.540	2.750	2.403	3.296	2.497	3.154	5.300	4.157	37.850	2.909	1.248	30,0
2013	1.484	2.113	3.343	2.925	3.504	3.186	2.777	2.103	2.875	2.086	3.631	5.444	3.597	35.471	2.538	1.059	29,4
2014	1.522	2.065	3.094	3.224	3.727	3.726	2.578	2.783	3.708	2.858	3.384	6.869	3.587	39.538	2.740	847	23,6
2015	2.215	3.346	5.699	3.729	3.600	4.253	2.922	2.211	2.687	2.266	3.146	7.307	5.561	43.381	4.260	1.301	23,4
2016	1.167	1.648	2.515	2.319	2.711	2.623	984	1.796	1.438	2.238	2.485	3.127	2.815	25.051	1.682	1.133	40,2
2017	931	1.290	1.982	1.888	2.184	1.891	1.974	1.860	2.284	2.188	2.487	4.438	2.221	25.397	1.548	673	30,3
2018	1.237	1.552	2.630	2.328	1.909	1.272	1.235	603	653	488	905	1.695	2.789	16.507	1.759	1.030	36,9
2019	342	579	1.255	842	728	981	435	497	854	1.047	1.100	2.087	921	10.747	576	345	37,5
2020	682	1.557											2.239	2.239	1.512	727	32,5



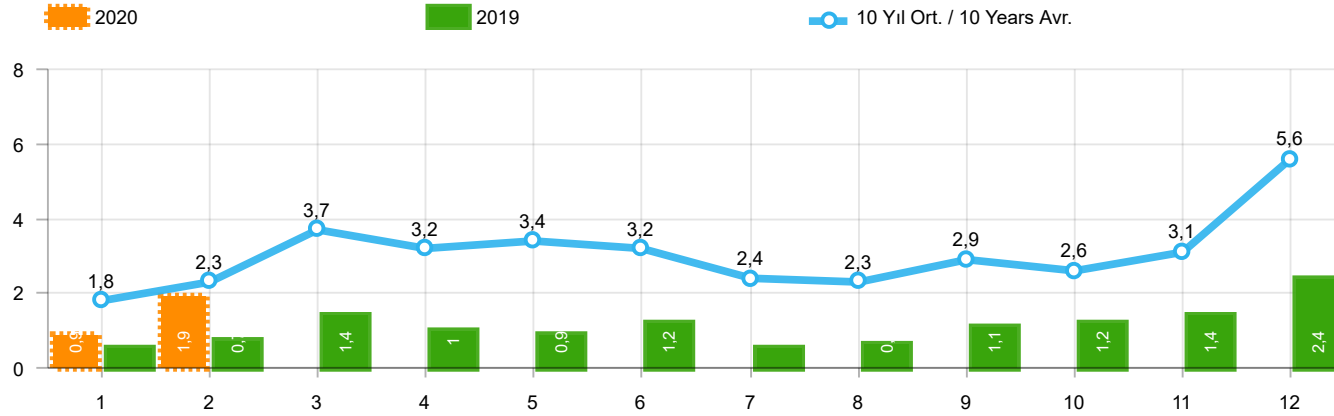
Aylar / Months	10 Yıl Ort / 10 Years Avr.	2020	%
1	199	104	-47,6
2	211	235	11,5
TOPLAM / TOTAL	409	339	-17,2

Yıl / Year	1	2	3	4	5	6	7	8	9	10	11	12	1-2 Toplam / Total	Toplam / Total
2010	140	128	172	153	127	124	93	232	199	204	162	382	268	2.116
2011	124	167	267	260	241	233	205	280	270	230	168	525	291	2.970
2012	179	257	277	229	257	239	216	249	325	269	189	398	436	3.084
2013	191	268	289	276	283	241	367	235	305	392	415	697	459	3.959
2014	360	394	384	333	294	258	216	229	395	220	266	653	754	4.002
2015	280	322	451	561	372	405	389	253	316	394	325	621	602	4.689
2016	309	158	251	302	261	196	139	220	241	230	354	431	467	3.092
2017	212	211	227	231	272	156	250	235	318	268	317	594	423	3.291
2018	134	142	410	296	207	315	180	146	160	155	184	425	276	2.754
2019	57	61	63	96	106	189	55	44	138	138	257	244	118	1.448
2020	104	235											339	339



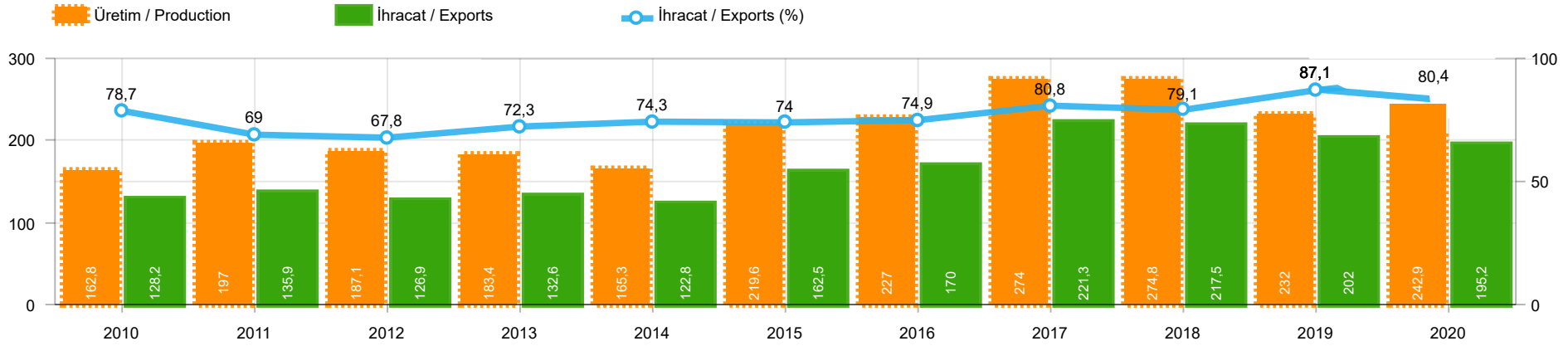
Aylar / Months	10 Yıl Ort / 10 Years Avr.	2020	%
1	150	64	-57,4
2	168	58	-65,5
TOPLAM / TOTAL	318	122	-61,6

Yıl / Year	1	2	3	4	5	6	7	8	9	10	11	12	1-2 Toplam / Total	Toplam / Total	1-2 Yerli / Local	1-2 İthal / Import	İthal Oran / Import %
2010	67	71	128	193	193	177	170	211	163	144	133	325	138	1.975	132	6	4,3
2011	92	212	233	324	412	334	148	214	130	176	176	321	304	2.772	293	11	3,6
2012	125	103	215	172	397	262	174	182	251	229	150	344	228	2.604	227	1	0,4
2013	365	445	537	489	580	520	412	281	245	198	123	189	810	4.384	808	2	0,2
2014	199	179	253	251	305	148	69	92	130	91	97	332	378	2.146	345	33	8,7
2015	146	222	313	290	290	255	211	203	153	171	359	363	368	2.976	357	11	3,0
2016	180	209	218	240	214	307	76	82	141	198	314	236	389	2.415	389	-	-
2017	174	119	167	124	188	115	206	187	92	231	109	235	293	1.947	283	10	3,4
2018	78	65	215	136	125	164	45	42	74	107	113	188	143	1.352	142	1	0,7
2019	75	54	112	35	97	41	25	45	84	28	42	54	129	692	129	-	-
2020	64	58											122	122	122	-	-



Aylar / Months	10 Yıl Ort / 10 Years Avr.	2020	%
1	1.751	850	-51,4
2	2.334	1.850	-20,7
TOPLAM / TOTAL	4.085	2.700	-33,9

Yıl / Year	1	2	3	4	5	6	7	8	9	10	11	12	1-2 Toplam / Total	Toplam / Total	1-2 Yerli / Local	1-2 İthal / Import	İthal Oran / Import %
2010	975	1.159	2.250	2.295	2.460	2.615	2.666	3.197	3.226	3.349	3.526	6.865	2.134	34.583	1.722	412	19,3
2011	2.867	3.923	5.642	5.087	5.216	4.419	2.614	3.239	4.184	3.806	3.493	6.558	6.790	51.048	4.692	2.098	30,9
2012	2.007	2.814	4.358	3.610	4.332	4.041	3.140	2.834	3.872	2.995	3.493	6.042	4.821	43.538	3.572	1.249	25,9
2013	2.040	2.826	4.169	3.690	4.367	3.947	3.556	2.619	3.425	2.676	4.169	6.330	4.866	43.814	3.805	1.061	21,8
2014	2.081	2.638	3.731	3.808	4.326	4.132	2.863	3.104	4.233	3.169	3.747	7.854	4.719	45.686	3.839	880	18,6
2015	2.641	3.890	6.463	4.580	4.262	4.913	3.522	2.667	3.156	2.831	3.830	8.291	6.531	51.046	5.219	1.312	20,1
2016	1.656	2.015	2.984	2.861	3.186	3.126	1.199	2.098	1.820	2.666	3.153	3.794	3.671	30.558	2.538	1.133	30,9
2017	1.317	1.620	2.376	2.243	2.644	2.162	2.430	2.282	2.694	2.687	2.913	5.267	2.937	30.635	2.254	683	23,3
2018	1.449	1.759	3.255	2.760	2.241	1.751	1.460	791	887	750	1.202	2.308	3.208	20.613	2.177	1.031	32,1
2019	474	694	1.430	973	931	1.211	515	586	1.076	1.213	1.399	2.385	1.168	12.887	823	345	29,5
2020	850	1.850											2.700	2.700	1.973	727	26,9



	2010	2011	2012	2013	2014	2015	2016	2017	2018	2019	2020
İhracat/Export	128.215	135.923	126.875	132.606	122.765	162.455	169.959	221.307	217.458	202.039	195.226
Üretim/Production	162.822	197.004	187.114	183.367	165.278	219.557	227.042	273.976	274.803	232.023	242.930
İhracat/Exports (%)	78,7	69	67,8	72,3	74,3	74	74,9	80,8	79,1	87,1	80,4

Taşıt Araçları İhracatı (2018 - 2020)
Motor Vehicle Exports (2018 - 2020)

SEKTÖR / SECTOR	2018	2019	1/2-2019	1/2-2020	2020/2019 %
OTOMOBİL / Pass.Car	875.147	828.744	128.147	134.282	4,8
OTOMOBİL TOPLAM / Pass. Car Total	875.147	828.744	128.147	134.282	4,8
KAMYON / Truck	14.478	14.824	2.864	1.144	-60,1
KAMYONET / Pick Up	372.954	349.490	57.590	49.791	-13,5
OTOBÜS / Bus	7.708	9.001	1.433	1.247	-13,0
MİNİBÜS / Minibus	47.736	49.283	9.577	6.014	-37,2
MİDİBÜS / Midibus	846	1.244	172	99	-42,4
TİCARİ ARAÇLAR TOPLAM / Commercial Vehicle Total	443.722	423.842	71.636	58.295	-18,6
TAŞIT ARAÇLARI TOPLAM / Motor Vehicles Total	1.318.869	1.252.586	199.783	192.577	-3,6
TRAKTÖR / F.Tractor	15.123	15.844	2.256	2.649	17,4
TRAKTÖR TOPLAM / F.Tractor Total	15.123	15.844	2.256	2.649	17,4
GENEL TOPLAM / GRAND TOTAL	1.333.992	1.268.430	202.039	195.226	-3,4

Üretici Bazında İhracat (adet)
Exports by Manufacturer (unit)

Üreticiler / Manufacturers	2018	2019	1-2 / 2019	1-2 / 2020
A.I.O.S.	964	1.433	210	79
FORD OTOSAN	328.502	333.734	57.733	45.357
HATTAT TRAKTÖR	621	637	111	204
HONDA TÜRKİYE	13.699	7.528	1.809	2.653
HYUNDAI ASSAN	190.347	169.803	25.464	24.860
KARSAN	3.419	2.713	182	40
M. BENZ TÜRK	16.309	16.324	3.086	1.418
MAN TÜRKİYE	2.425	2.892	569	572
OTOKAR	901	1.156	202	91
OYAK RENAULT	280.411	295.275	44.147	43.052
TEMSA	645	602	96	15
TOFAŞ	243.796	194.107	29.017	30.144
TOYOTA	237.451	227.019	37.268	44.296
TÜRK TRAKTÖR	14.502	15.207	2.145	2.445
GENEL TOPLAM / Grand Total	1.333.992	1.268.430	202.039	195.226

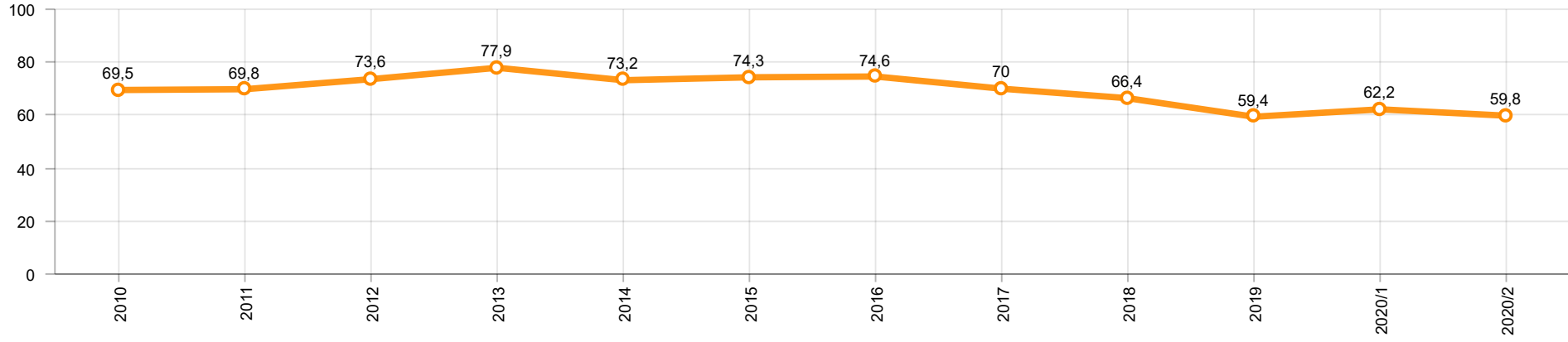
Otomotiv Ana ve Yan Sanayii İhracatı (ABD \$)
CBU and CKD Exports - \$

Sektör / Sector	2018	2019	OCAK - ŞUBAT / January - February 2019	OCAK - ŞUBAT / January - February 2020	2020 / 2019 %
Toplam Yan Sanayi / Total Component Industry	10.878.550.618	10.617.878.409	1.778.072.290	1.742.931.207	-2,0
İç ve Dış Lastik / Tyres	1.353.862.295	1.479.469.475	236.134.174	222.547.769	-5,8
Emniyet Camı / Safety Glasses	151.148.111	150.706.975	23.642.998	25.107.505	6,2
Motor / Engine	581.983.113	518.051.731	89.171.740	96.231.171	7,9
Akümülatör / Batteries	387.879.636	397.638.079	60.541.955	46.780.938	-22,7
Diğer Aksam ve Parça / Spare Parts&Components	8.403.677.463	8.072.012.149	1.368.581.423	1.352.263.824	-1,2
Toplam Ana Sanayi / Total Vehicle Industry	21.349.203.156	20.613.852.926	3.178.096.417	3.291.813.874	3,6
Otobüs / Bus	1.503.156.428	1.759.421.232	289.903.394	230.628.463	-20,4
Midibüs-Minibüs / Midibus-Minibus	215.450.022	222.922.952	16.065.623	43.633.955	171,6
Otomobil / P.Cars	12.420.951.066	11.864.837.779	1.764.830.420	2.113.035.037	19,7
Kamyon-Kamyonet / Truck-Pick Up&Van	5.375.329.018	4.945.381.202	801.259.241	713.212.409	-11,0
Römork ve Yarı Römork / Trailer-Semi Trailer	507.223.886	503.258.885	75.976.368	68.296.153	-10,1
Çekici / Tractor	904.738.051	839.891.843	173.356.640	51.891.882	-70,1
Tarım Traktörü / Farm Tractor	422.354.685	478.139.033	56.704.731	71.115.975	25,4
Toplam / Total	32.227.753.774	31.231.731.335	4.956.168.707	5.034.745.081	1,6

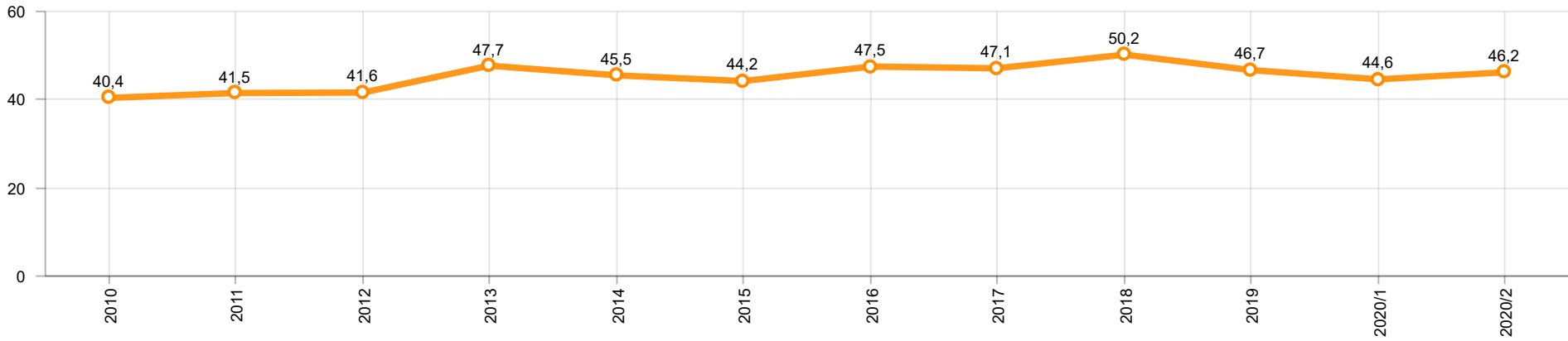
Kaynak: Uludağ İhracatçı Birlikleri . ÜİB tarafından OSD için özel olarak analiz edilen Otomotiv İhracatı kapsamında; ÜİB Türkiye Geneli Otomotiv Endüstrisi sınıflandırmasına kıyasla “Römork ve Yarı Römork” , “Tarım Traktörü” verileri dahil edilmekte; “Kullanılmış Araçlar” ,”İki Tekerlekli Taşıtlar” , “Demiryolu Taşıtları” hariç tutulmaktadır.

Source: Uludağ Exporters Association – Special Analyze for OSD.Compared to Turkish General Automotive Industry classification, this special analyze includes; farms tractors, trailers and semi-trailers, does not include; used vehicles, two-wheeled vehicles and railway vehicles

Otomobil Pazarında İthalatın Payı (%)
Import Share in P.Car Market (%)



Hafif Ticari Araçlar Pazarında İthalatın Payı (%)
Import Share in LCV Market (%)



Araç Tipleri / Vehicle Types	1	2	3	4	5	6	7	8	9	10	11	12	Toplam / Total
OTOMOBİL - Pass.Car	60.438	73.844											134.282
KAMYON - H. Truck	202	942											1.144
KAMYONET - Pick Up	25.435	24.356											49.791
OTOBÜS - Bus	551	696											1.247
MİNİBÜS - Minibus	3.305	2.709											6.014
MİDİBÜS - Midibus	31	68											99
TİCARİ ARAÇLAR TOPLAMI - CV Total	29.524	28.771											58.295
TAŞIT ARAÇLARI TOPLAMI - MV Total	89.962	102.615											192.577
TRAKTÖR - F.Tractor	1.468	1.181											2.649
GENEL TOPLAM - Grand Total	91.430	103.796											195.226

Otomobil / P.Car

Firmalar / Firms	1	2	3	4	5	6	7	8	9	10	11	12	Toplam / Total
FORD OTOSAN	583	867	-	-	-	-	-	-	-	-	-	-	1.450
HONDA TÜRKİYE	1.087	1.566	-	-	-	-	-	-	-	-	-	-	2.653
HYUNDAI ASSAN	10.700	14.160	-	-	-	-	-	-	-	-	-	-	24.860
OYAK RENAULT	18.323	24.729	-	-	-	-	-	-	-	-	-	-	43.052
TOFAŞ	7.835	10.136	-	-	-	-	-	-	-	-	-	-	17.971
TOYOTA	21.910	22.386	-	-	-	-	-	-	-	-	-	-	44.296
TOPLAM - Total	60.438	73.844	-	-	-	-	-	-	-	-	-	-	134.282

Kamyonet / Pick-up

Firmalar / Firms	1	2	3	4	5	6	7	8	9	10	11	12	Toplam / Total
FORD OTOSAN	20.932	16.627	-	-	-	-	-	-	-	-	-	-	37.559
KARSAN	37	-	-	-	-	-	-	-	-	-	-	-	37
OTOKAR	22	-	-	-	-	-	-	-	-	-	-	-	22
TOFAŞ	4.444	7.729	-	-	-	-	-	-	-	-	-	-	12.173
TOPLAM - Total	25.435	24.356	-	-	-	-	-	-	-	-	-	-	49.791

Minibüs / Minibus

Firmalar / Firms	1	2	3	4	5	6	7	8	9	10	11	12	Toplam / Total
FORD OTOSAN	3.303	2.708	-	-	-	-	-	-	-	-	-	-	6.011
KARSAN	2	1	-	-	-	-	-	-	-	-	-	-	3
TOPLAM - Total	3.305	2.709	-	-	-	-	-	-	-	-	-	-	6.014

Kamyon / Truck

Firmalar / Firms	1	2	3	4	5	6	7	8	9	10	11	12	Toplam / Total
FORD OTOSAN	145	192	-	-	-	-	-	-	-	-	-	-	337
KARSAN	-	-	-	-	-	-	-	-	-	-	-	-	-
M. BENZ TÜRK	57	750	-	-	-	-	-	-	-	-	-	-	807
OTOKAR	-	-	-	-	-	-	-	-	-	-	-	-	-
TOPLAM - Total	202	942	-	-	-	-	-	-	-	-	-	-	1.144

Midibüs / Midibus

Firmalar / Firms	1	2	3	4	5	6	7	8	9	10	11	12	Toplam / Total
A.I.O.S.	16	42	-	-	-	-	-	-	-	-	-	-	58
KARSAN	-	-	-	-	-	-	-	-	-	-	-	-	-
OTOKAR	15	20	-	-	-	-	-	-	-	-	-	-	35
TEMSA	-	6	-	-	-	-	-	-	-	-	-	-	6
TOPLAM - Total	31	68	-	-	-	-	-	-	-	-	-	-	99

Otobüs / Bus

Firmalar / Firms	1	2	3	4	5	6	7	8	9	10	11	12	Toplam / Total
A.I.O.S.	6	15	-	-	-	-	-	-	-	-	-	-	21
KARSAN	-	-	-	-	-	-	-	-	-	-	-	-	-
M. BENZ TÜRK	231	380	-	-	-	-	-	-	-	-	-	-	611
MAN TÜRKİYE	288	284	-	-	-	-	-	-	-	-	-	-	572
OTOKAR	19	15	-	-	-	-	-	-	-	-	-	-	34
TEMSA	7	2	-	-	-	-	-	-	-	-	-	-	9
TOPLAM - Total	551	696	-	-	-	-	-	-	-	-	-	-	1.247

Traktör / F.Tractor

Firmalar / Firms	1	2	3	4	5	6	7	8	9	10	11	12	Toplam / Total
HATTAT TRAKTÖR	120	84	-	-	-	-	-	-	-	-	-	-	204
TÜRK TRAKTÖR	1.348	1.097	-	-	-	-	-	-	-	-	-	-	2.445
TOPLAM - Total	1.468	1.181	-	-	-	-	-	-	-	-	-	-	2.649

Firmalar / Firms	2019 Toplam / Total	1	2	3	4	5	6	7	8	9	10	11	12	Toplam / Total
Alfa Romeo	253	2	-	-	-	-	-	-	-	-	-	-	-	2
Aston Martin	18	1	2	-	-	-	-	-	-	-	-	-	-	3
Audi	10.024	461	733	-	-	-	-	-	-	-	-	-	-	1.194
Bentley	9	-	1	-	-	-	-	-	-	-	-	-	-	1
BMW	9.583	251	815	-	-	-	-	-	-	-	-	-	-	1.066
Citroen	8.827	584	1.534	-	-	-	-	-	-	-	-	-	-	2.118
Dacia	17.533	2.261	1.851	-	-	-	-	-	-	-	-	-	-	4.112
DS	269	10	101	-	-	-	-	-	-	-	-	-	-	111
Ferrari	20	1	3	-	-	-	-	-	-	-	-	-	-	4
Fiat	1.043	7	22	-	-	-	-	-	-	-	-	-	-	29
Ford	12.484	206	862	-	-	-	-	-	-	-	-	-	-	1.068
Honda	3.108	101	172	-	-	-	-	-	-	-	-	-	-	273
Hyundai	15.460	950	1.385	-	-	-	-	-	-	-	-	-	-	2.335
Jaguar	244	-	47	-	-	-	-	-	-	-	-	-	-	47
Jeep	2.123	196	330	-	-	-	-	-	-	-	-	-	-	526
Kia	4.987	325	1.140	-	-	-	-	-	-	-	-	-	-	1.465
Lamborghini	9	-	1	-	-	-	-	-	-	-	-	-	-	1
Land Rover	1.371	8	151	-	-	-	-	-	-	-	-	-	-	159
Lexus	85	7	7	-	-	-	-	-	-	-	-	-	-	14
Maserati	45	-	2	-	-	-	-	-	-	-	-	-	-	2
Mazda	417	11	7	-	-	-	-	-	-	-	-	-	-	18
Mercedes-Benz	9.862	504	1.239	-	-	-	-	-	-	-	-	-	-	1.743
Mini	1.254	28	82	-	-	-	-	-	-	-	-	-	-	110
Mitsubishi	747	29	21	-	-	-	-	-	-	-	-	-	-	50
Nissan	11.980	757	275	-	-	-	-	-	-	-	-	-	-	1.032
Opel	16.689	554	1.768	-	-	-	-	-	-	-	-	-	-	2.322
Peugeot	23.057	1.338	2.440	-	-	-	-	-	-	-	-	-	-	3.778
Porsche	361	11	36	-	-	-	-	-	-	-	-	-	-	47
Renault	9.410	185	727	-	-	-	-	-	-	-	-	-	-	912
Seat	5.914	578	1.199	-	-	-	-	-	-	-	-	-	-	1.777
Skoda	15.369	884	1.570	-	-	-	-	-	-	-	-	-	-	2.454
Smart	44	12	16	-	-	-	-	-	-	-	-	-	-	28
Ssangyong	111	23	33	-	-	-	-	-	-	-	-	-	-	56
Subaru	662	17	59	-	-	-	-	-	-	-	-	-	-	76
Suzuki	2.381	22	124	-	-	-	-	-	-	-	-	-	-	146
Toyota	1.350	30	90	-	-	-	-	-	-	-	-	-	-	120
Volkswagen	38.820	3.292	3.469	-	-	-	-	-	-	-	-	-	-	6.761
Volvo	4.155	44	256	-	-	-	-	-	-	-	-	-	-	300
GENEL TOPLAM - Grand Total	230.078	13.690	22.570	-	-	-	-	-	-	-	-	-	-	36.260

Firmalar / Firms	2019 Toplam / Total	1	2	3	4	5	6	7	8	9	10	11	12	Toplam / Total
Citroen	3.206	250	341	-	-	-	-	-	-	-	-	-	-	591
Dacia	2.473	271	352	-	-	-	-	-	-	-	-	-	-	623
Fiat	1.767	176	350	-	-	-	-	-	-	-	-	-	-	526
Ford	1.198	50	71	-	-	-	-	-	-	-	-	-	-	121
Hyundai	1.114	55	96	-	-	-	-	-	-	-	-	-	-	151
Isuzu	75	2	3	-	-	-	-	-	-	-	-	-	-	5
Iveco	1.326	64	83	-	-	-	-	-	-	-	-	-	-	147
Kia	1.355	5	4	-	-	-	-	-	-	-	-	-	-	9
Mercedes-Benz	5.074	219	480	-	-	-	-	-	-	-	-	-	-	699
Mitsubishi	1.880	99	146	-	-	-	-	-	-	-	-	-	-	245
Nissan	1.087	66	92	-	-	-	-	-	-	-	-	-	-	158
Opel	1.370	51	33	-	-	-	-	-	-	-	-	-	-	84
Peugeot	5.804	418	555	-	-	-	-	-	-	-	-	-	-	973
Renault	4.309	171	228	-	-	-	-	-	-	-	-	-	-	399
Ssangyong	260	19	21	-	-	-	-	-	-	-	-	-	-	40
Toyota	939	25	34	-	-	-	-	-	-	-	-	-	-	59
Volkswagen	9.676	403	1.456	-	-	-	-	-	-	-	-	-	-	1.859
GENEL TOPLAM - Grand Total	42.913	2.344	4.345	-	-	-	-	-	-	-	-	-	-	6.689