



OTOMOTİV SANAYİİ DERNEĐİ
AUTOMOTIVE MANUFACTURERS ASSOCIATION

OTOMOTİV SEKTÖRÜ AYLIK DEĐERLENDİRME RAPORU MART 2021

AUTOMOTIVE INDUSTRY MONTHLY REPORT
March 2021

OSD "OICA" Üyesidir © O I C A OSD is a Member of "OICA"

	3 - 2020	3 - 2021	%	1 - 3 / 2020	1 - 3 / 2021	%	4/2019 - 3/2020	4/2020 - 3/2021	%
Otomobil Üretimi/P.Cars Production	72.102	74.995	4,0	235.208	211.877	-9,9	979.028	831.712	-15,1
Toplam Üretim/Total Production	103.359	123.427	19,4	341.145	345.691	1,3	1.440.873	1.302.424	-9,6
Otomobil Pazarı/P.Cars Market	39.887	76.357	91,4	99.630	156.464	57,1	418.074	666.943	59,5
Toplam Pazar/Total Market	51.554	99.964	93,9	128.625	206.597	60,6	529.505	874.122	65,1
Otomobil İthalatı/P.Cars Import	26.240	47.074	79,4	62.483	96.362	54,2	252.137	394.329	56,4
Toplam İthalat/Total Import	30.911	57.575	86,3	74.567	118.284	58,6	301.262	470.708	56,3
Otomobil İhracatı/P.Cars Export	57.326	57.024	-0,5	191.608	155.457	-18,9	810.469	560.465	-30,9
Toplam İhracat/Total Export	83.771	95.633	14,2	276.348	261.109	-5,5	1.208.912	901.299	-25,5
Otomobil İhracatı(\$)/P.Cars Export (\$)	767.648.752,23	1.002.349.359,91	30,6	2.879.958.725	2.656.279.416	-7,8	11.767.373.263	9.088.409.024	-22,8
Toplam İhracat(\$)/Total Export (\$)*	2.105.632.630,07	2.935.978.222	39,4	7.133.467.949	7.818.613.546	9,6	30.387.307.321	26.627.745.819	-12,4

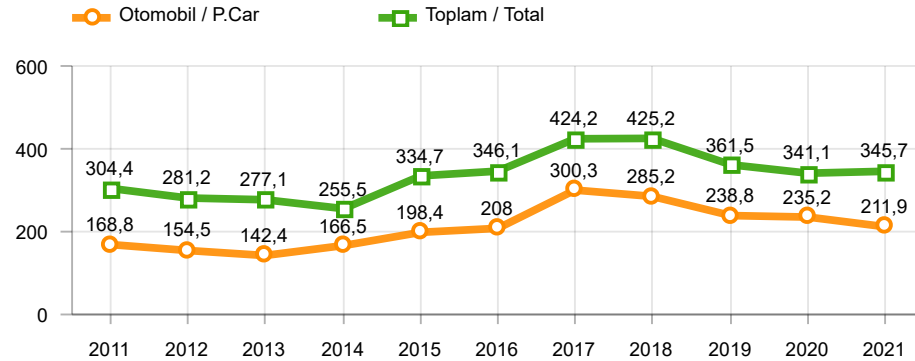
Parametreler/Parameters	3 - 2020	3 - 2021	%	1 - 3 / 2020	1 - 3 / 2021	%	4/2019 - 3/2020	4/2020 - 3/2021	%
ÜFE / PPI	0,9	4,1	-	3,2	8,2	-	12,6	17,0	-
TÜFE / CPI	0,6	1,1	-	2,3	3,7	-	13,3	13,2	-
Sanayi Endeksi / Industry Index	0,9	4,3	-	3,5	8,9	-	11,6	18,2	-
Dolar \$ ** (1 birim)	6,3	7,6	20,8	6,1	7,4	20,2	5,8	7,3	25,3
Euro € ** (1 birim)	7,0	9,1	30,1	6,8	8,9	31,0	6,5	8,5	31,7
Japon Yeni ¥ ** (100 birim)	5,8	7,0	19,7	5,6	6,9	23,1	5,3	6,9	28,5

*Toplam Sanayi / Total Industry Including Components

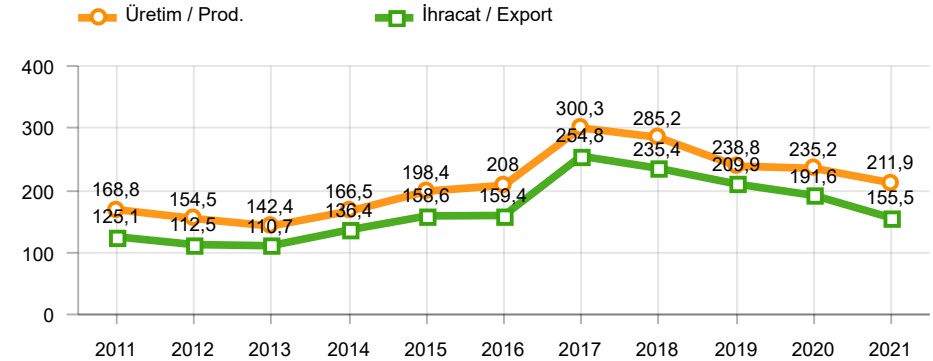
** Ortalama Değerler / Average Values

Araç Tipleri / Types	3 / 2020	3 / 2021	3 % Değişim	1-3 / 2020	1-3 / 2021	1-3 % Değişim
OTOMOBİL / Pass.Car	72.102	74.995	4,0	235.208	211.877	-9,9
OTOMOBİL Toplam / Pass.Car Total	72.102	74.995	4,0	235.208	211.877	-9,9
B.KAMYON / H. Truck	1.955	3.438	75,9	4.155	8.340	100,7
K.KAMYON / L. Truck	221	274	24,0	341	858	151,6
KAMYONET / Pick Up	24.370	38.290	57,1	84.822	108.765	28,2
OTOBÜS / Bus	776	453	-41,6	2.211	987	-55,4
MİNİBÜS / Minibus	3.690	5.857	58,7	13.897	14.518	4,5
MİDİBÜS / Midibus	245	120	-51,0	511	346	-32,3
TİCARİ ARAÇLAR Toplam / Commercial Vehicles Total	31.257	48.432	54,9	105.937	133.814	26,3
TAŞIT ARAÇLARI Toplam / Motor Vehicles Total	103.359	123.427	19,4	341.145	345.691	1,3
TRAKTÖR / F.Tractor	2.188	5.761	163,3	7.453	15.075	102,3
TRAKTÖR Toplam / F.Tractor Total	2.188	5.761	163,3	7.453	15.075	102,3
GENEL TOPLAM / Grand Total	105.547	129.188	22,4	348.598	360.766	3,5

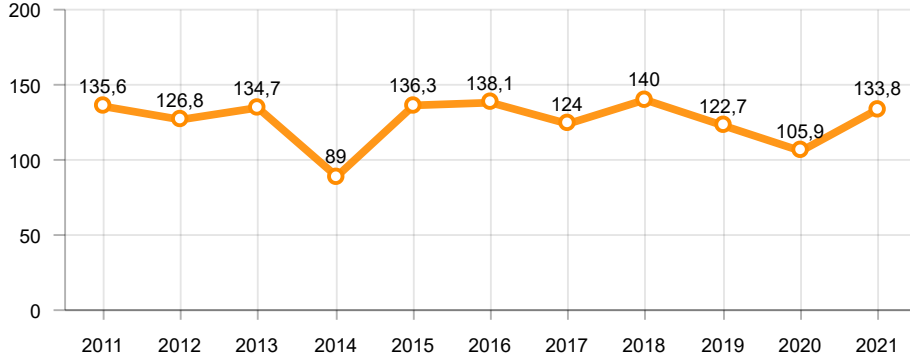
Toplam Üretim ve Otomobil Üretimi (x1000)(OCAK - MART)
Total & P.Cars Production (x1000)(January - March)



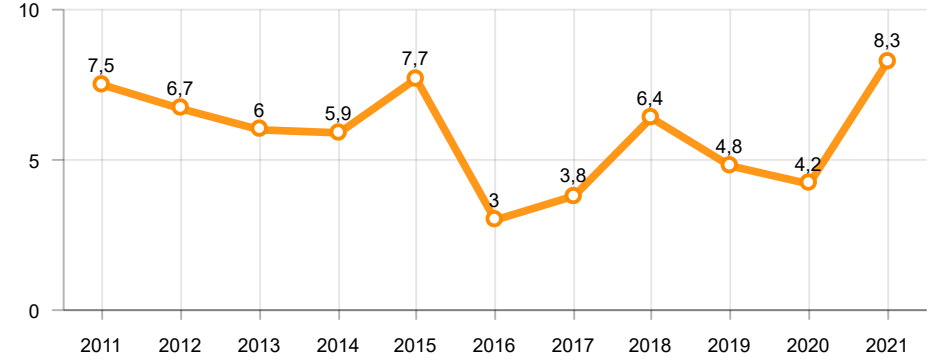
Otomobil Üretimi ve İhracat (x1000)(OCAK - MART)
P.Cars Production & Exports (x1000)(January - March)



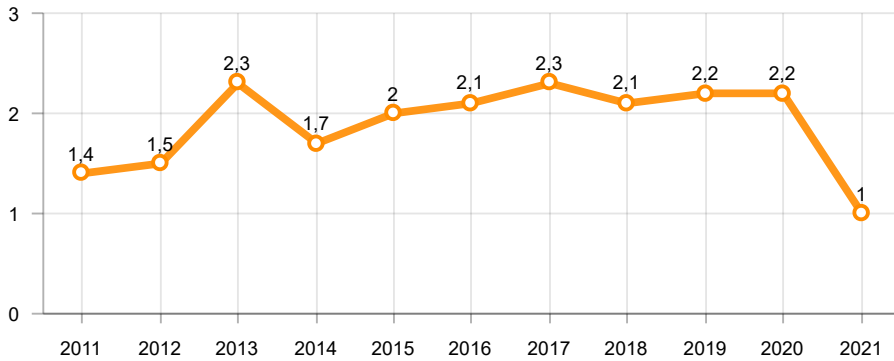
Ticari Araç Üretimi (x1000)(OCAK - MART)
Commercial Vehicle Production (x1000)(January - March)



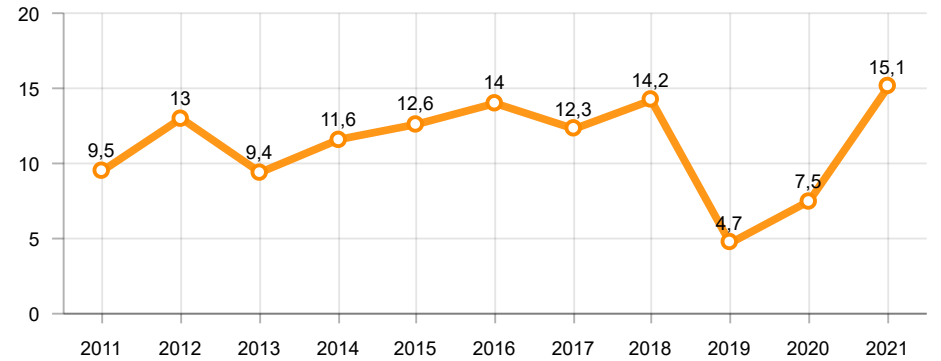
Büyük Kamyon Üretimi (x1000)(OCAK - MART)
Heavy Truck Production (x1000)(January - March)

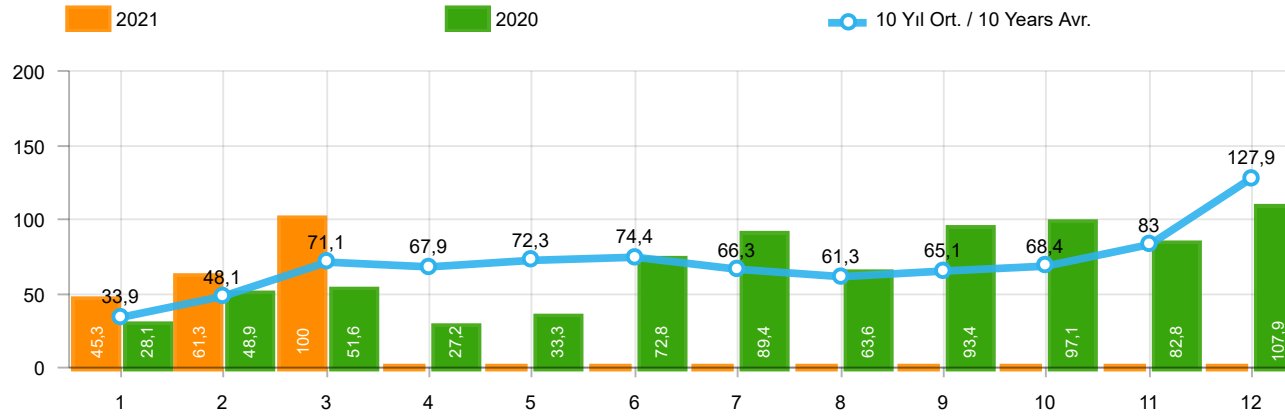


Otobüs Üretimi (x1000)(OCAK - MART)
Bus Production (x1000)(January - March)



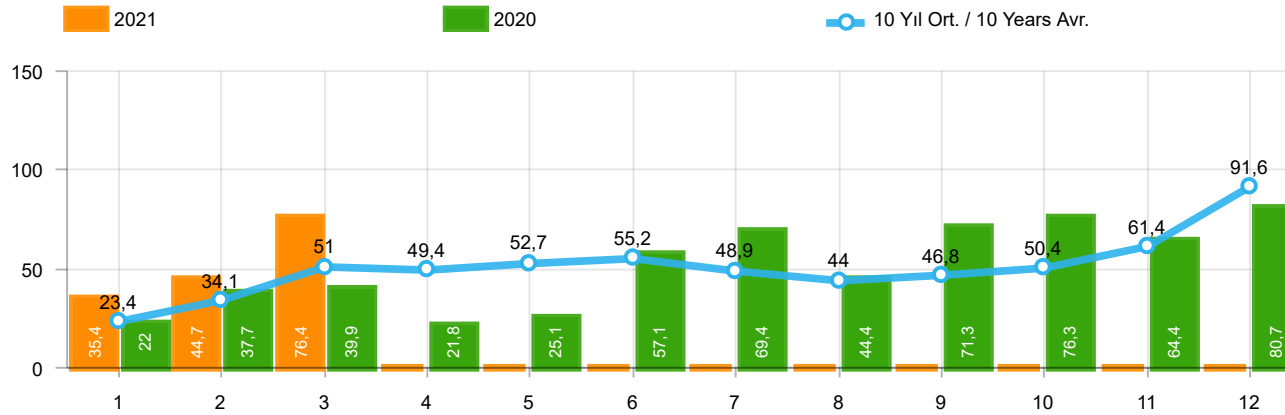
Traktör Üretimi (x1000)(OCAK - MART)
F. Tractor Production (x1000)(January - March)





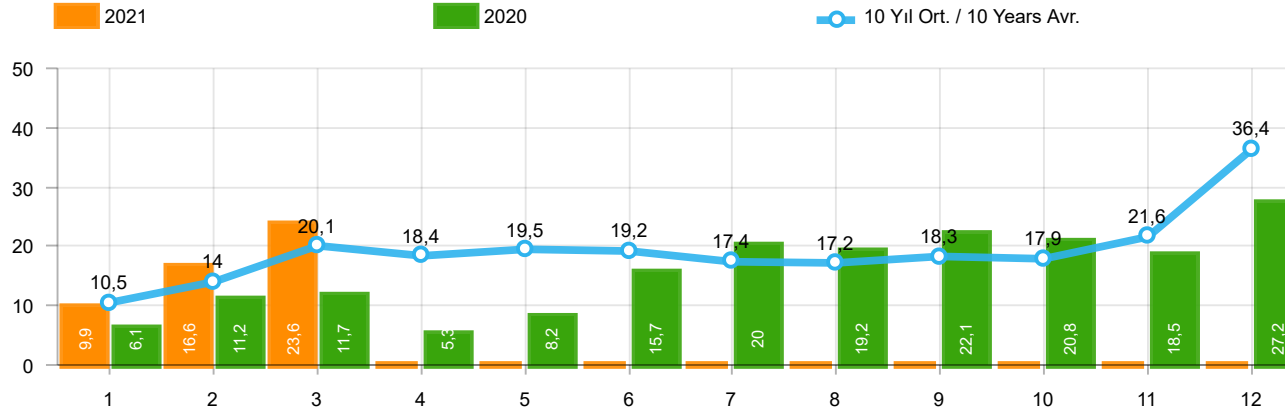
Aylar / Months	10 Yıl Ort / 10 Years Avr.	2021	%
1	33.938	45.308	33,5
2	48.144	61.325	27,4
3	71.122	99.964	40,6
TOPLAM/TOTAL	153.205	206.597	34,9

Yıl / Year	1	2	3	4	5	6	7	8	9	10	11	12	1-3 Toplam / Total	Toplam / Total	1-3 Yerli / Local	1-3 İthal / Import	İthal Oran / Import %
2011	47.759	62.586	84.045	82.782	85.862	85.992	65.658	61.645	64.313	73.227	67.150	134.468	194.390	915.487	77.652	116.738	60,1
2012	31.552	44.138	69.242	66.559	75.195	75.108	65.444	60.982	73.501	62.933	75.203	121.442	144.932	821.299	58.089	86.843	59,9
2013	37.563	51.133	72.943	77.265	85.835	78.043	75.152	67.662	71.388	60.690	83.470	136.048	161.639	897.192	52.500	109.139	67,5
2014	34.751	37.659	51.312	57.113	62.447	64.295	62.770	63.303	70.764	69.742	84.368	154.843	123.722	813.367	40.774	82.948	67,0
2015	37.256	59.221	89.765	96.182	85.804	91.071	87.358	85.244	67.181	67.086	88.431	164.464	186.242	1.019.063	70.708	115.534	62,0
2016	34.369	54.840	85.932	87.748	97.090	94.666	59.732	73.654	69.413	85.666	125.462	145.706	175.141	1.014.278	58.892	116.249	66,4
2017	36.640	48.585	76.178	78.231	88.066	85.820	84.727	74.818	74.046	94.439	103.772	141.507	161.403	986.829	60.091	101.312	62,8
2018	36.525	48.768	79.600	73.886	74.996	52.788	54.194	35.137	23.915	22.321	59.406	80.014	164.893	641.550	64.423	100.470	60,9
2019	14.847	25.569	50.651	31.944	33.947	43.899	18.442	26.832	43.068	50.288	59.575	92.885	91.067	491.947	40.693	50.374	55,3
2020	28.123	48.948	51.554	27.165	33.308	72.789	89.419	63.570	93.406	97.125	82.824	107.919	128.625	796.150	54.058	74.567	58,0
2021	45.308	61.325	99.964										206.597	206.597	88.313	118.284	57,3



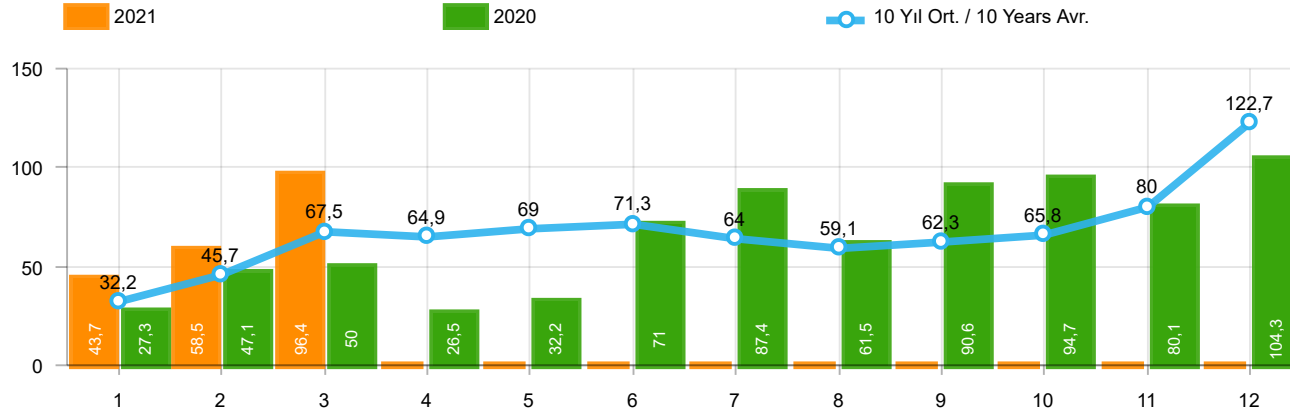
Aylar / Months	10 Yıl Ort / 10 Years Avr.	2021	%
1	23.430	35.358	50,9
2	34.107	44.749	31,2
3	51.047	76.357	49,6
TOPLAM / TOTAL	108.584	156.464	44,1

Yıl / Year	1	2	3	4	5	6	7	8	9	10	11	12	1-3 Toplam / Total	Toplam / Total	1-3 Yerli / Local	1-3 İthal / Import	İthal Oran / Import %
2011	29.868	39.004	54.023	53.835	56.302	56.714	43.518	38.875	39.964	47.508	44.951	88.957	122.895	593.519	37.090	85.805	69,8
2012	21.077	29.189	47.270	45.645	50.460	50.849	44.531	41.236	49.360	43.440	52.297	80.926	97.536	556.280	30.704	66.832	68,5
2013	25.835	36.814	51.785	56.999	62.383	58.290	55.712	51.611	52.925	46.985	64.117	101.199	114.434	664.655	24.846	89.588	78,3
2014	24.368	27.167	37.812	42.769	46.379	47.278	46.602	45.131	49.262	50.814	59.695	110.054	89.347	587.331	21.342	68.005	76,1
2015	24.498	40.817	61.676	70.211	62.878	67.766	64.218	61.753	47.088	47.954	62.397	114.340	126.991	725.596	34.745	92.246	72,6
2016	23.358	40.588	63.975	65.618	73.832	71.111	45.566	53.977	51.340	63.746	95.783	108.044	127.921	756.938	33.436	94.485	73,9
2017	25.689	34.658	55.616	57.998	65.799	66.164	62.384	54.890	53.423	70.488	75.956	99.694	115.963	722.759	35.720	80.243	69,2
2018	26.611	35.901	59.798	55.108	57.227	41.225	42.024	26.976	17.595	16.809	46.204	60.843	122.310	486.321	41.350	80.960	66,2
2019	10.979	19.205	38.628	24.416	27.126	36.024	15.398	21.544	35.308	39.996	47.803	70.829	68.812	387.256	28.388	40.424	58,7
2020	22.016	37.727	39.887	21.825	25.073	57.067	69.427	44.372	71.296	76.341	64.357	80.721	99.630	610.109	37.147	62.483	62,7
2021	35.358	44.749	76.357										156.464	156.464	60.100	96.364	61,6



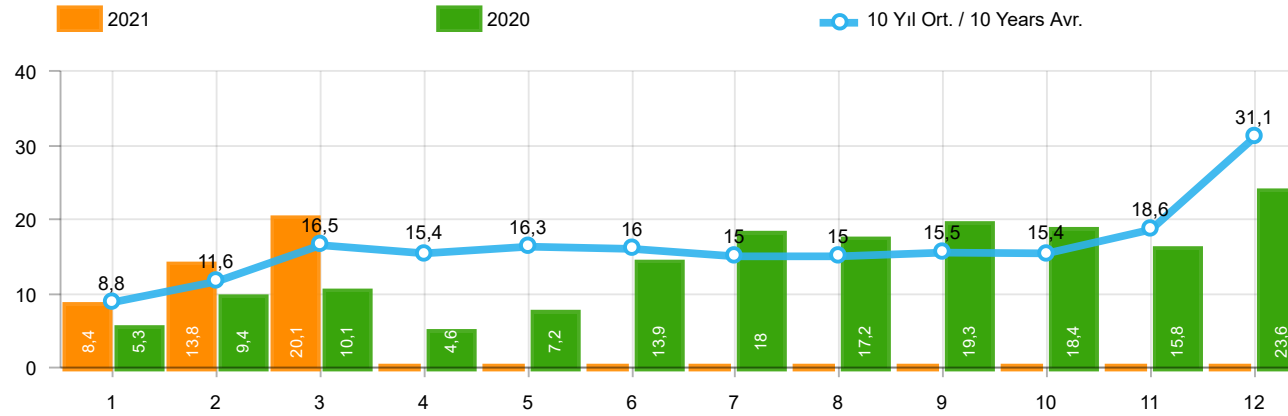
Aylar / Months	10 Yıl Ort. / 10 Years Avr.	2021	%
1	10.509	9.950	-5,3
2	14.038	16.576	18,1
3	20.075	23.607	17,6
TOPLAM / TOTAL	44.622	50.133	12,4

Yıl / Year	1	2	3	4	5	6	7	8	9	10	11	12	1-3 Toplam / Total	Toplam / Total	1-3 Yerli / Local	1-3 İthal / Import	İthal Oran / Import %
2011	17.891	23.582	30.022	28.947	29.560	29.278	22.140	22.770	24.349	25.719	22.199	45.511	71.495	321.968	40.562	30.933	43,3
2012	10.475	14.949	21.972	20.914	24.735	24.259	20.913	19.746	24.141	19.493	22.906	40.516	47.396	265.019	27.385	20.011	42,2
2013	11.728	14.319	21.158	20.266	23.452	19.753	19.440	16.051	18.463	13.705	19.353	34.849	47.205	232.537	27.654	19.551	41,4
2014	10.383	10.492	13.500	14.344	16.068	17.017	16.168	18.172	21.502	18.928	24.673	44.789	34.375	226.036	19.432	14.943	43,5
2015	12.758	18.404	28.089	25.971	22.926	23.305	23.140	23.491	20.093	19.132	26.034	50.124	59.251	293.467	35.963	23.288	39,3
2016	11.011	14.252	21.957	22.130	23.258	23.555	14.166	19.677	18.073	21.920	29.679	37.662	47.220	257.340	25.456	21.764	46,1
2017	10.951	13.927	20.562	20.233	22.267	19.656	22.343	19.928	20.623	23.951	27.816	41.813	45.440	264.070	24.371	21.069	46,4
2018	9.914	12.867	19.802	18.778	17.769	11.563	12.170	8.161	6.320	5.512	13.202	19.171	42.583	155.229	23.073	19.510	45,8
2019	3.868	6.364	12.023	7.528	6.821	7.875	3.044	5.288	7.760	10.292	11.772	22.056	22.255	104.691	12.305	9.950	44,7
2020	6.107	11.221	11.667	5.340	8.235	15.722	19.992	19.198	22.110	20.784	18.467	27.198	28.995	186.041	16.911	12.084	41,7
2021	9.950	16.576	23.607										50.133	50.133	28.213	21.920	43,7



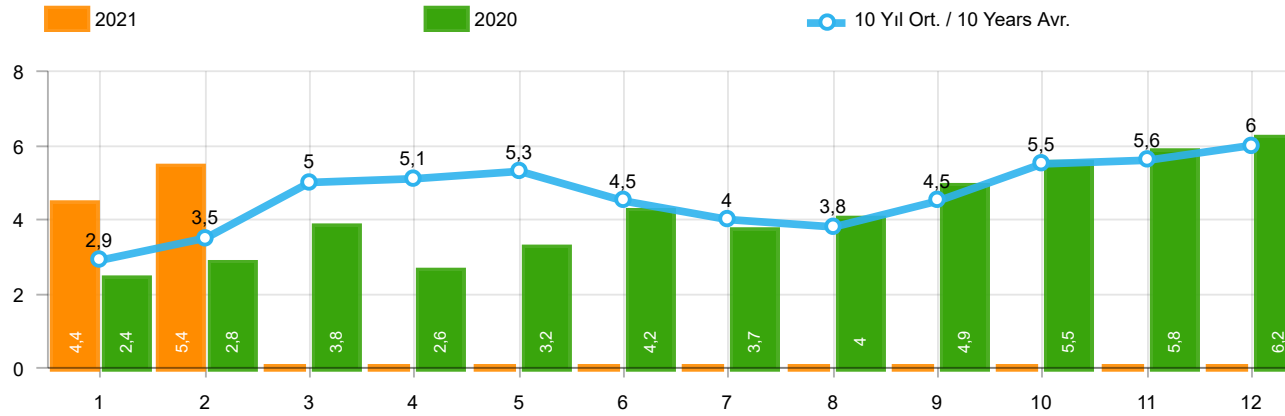
Aylar / Months	10 Yıl Ort. / 10 Years Avr.	2021	%
1	32.200	43.728	35,8
2	45.744	58.504	27,9
3	67.527	96.428	42,8
TOPLAM / TOTAL	145.471	198.660	36,6

Yıl / Year	1	2	3	4	5	6	7	8	9	10	11	12	1-3 Toplam / Total	Toplam / Total	1-3 Yerli / Local	1-3 İthal / Import	İthal Oran / Import %
2011	44.892	58.663	78.403	77.695	80.646	81.573	63.044	58.406	60.129	69.421	63.657	127.910	181.958	864.439	69.196	112.762	62,0
2012	29.545	41.324	64.884	62.949	70.863	71.067	62.304	58.148	69.629	59.938	71.710	115.400	135.753	777.761	51.098	84.655	62,4
2013	35.523	48.307	68.774	73.575	81.468	74.096	71.596	65.043	67.963	58.014	79.301	129.718	152.604	853.378	45.477	107.127	70,2
2014	32.670	35.021	47.581	53.305	58.121	60.163	59.907	60.199	66.531	66.573	80.621	146.989	115.272	767.681	34.026	81.246	70,5
2015	34.615	55.331	83.302	91.602	81.542	86.158	83.836	82.577	64.025	64.255	84.601	156.173	173.248	968.017	60.533	112.715	65,1
2016	32.713	52.825	82.948	84.887	93.904	91.540	58.533	71.556	67.593	83.000	122.309	141.912	168.486	983.720	54.494	113.992	67,7
2017	35.323	46.965	73.802	75.988	85.422	83.658	82.297	72.536	71.352	91.752	100.859	136.240	156.090	956.194	56.013	100.077	64,1
2018	35.076	47.009	76.345	71.126	72.755	51.037	52.734	34.346	23.028	21.571	58.204	77.706	158.430	620.937	60.068	98.362	62,1
2019	14.373	24.875	49.221	30.971	33.016	42.688	17.927	26.246	41.992	49.075	58.176	90.500	88.469	479.060	38.979	49.490	55,9
2020	27.273	47.122	50.008	26.457	32.235	70.973	87.401	61.533	90.619	94.733	80.141	104.293	124.403	772.788	50.995	73.408	59,0
2021	43.728	58.504	96.428										198.660	198.660	83.231	115.429	58,1



Aylar / Months	10 Yıl Ort. / 10 Years Avr.	2021	%
1	8.770	8.370	-4,6
2	11.637	13.755	18,2
3	16.480	20.071	21,8
TOPLAM / TOTAL	36.887	42.196	14,4

Yıl / Year	1	2	3	4	5	6	7	8	9	10	11	12	1-3 Toplam / Total	Toplam / Total	1-3 Yerli / Local	1-3 İthal / Import	İthal Oran / Import %
2011	15.024	19.659	24.380	23.860	24.344	24.859	19.526	19.531	20.165	21.913	18.706	38.953	59.063	270.920	32.106	26.957	45,6
2012	8.468	12.135	17.614	17.304	20.403	20.218	17.773	16.912	20.269	16.498	19.413	34.474	38.217	221.481	20.394	17.823	46,6
2013	9.688	11.493	16.989	16.576	19.085	15.806	15.884	13.432	15.038	11.029	15.184	28.519	38.170	188.723	20.631	17.539	45,9
2014	8.302	7.854	9.769	10.536	11.742	12.885	13.305	15.068	17.269	15.759	20.926	36.935	25.925	180.350	12.684	13.241	51,1
2015	10.117	14.514	21.626	21.391	18.664	18.392	19.618	20.824	16.937	16.301	22.204	41.833	46.257	242.421	25.788	20.469	44,3
2016	9.355	12.237	18.973	19.269	20.072	20.429	12.967	17.579	16.253	19.254	26.526	33.868	40.565	226.782	21.058	19.507	48,1
2017	9.634	12.307	18.186	17.990	19.623	17.494	19.913	17.646	17.929	21.264	24.903	36.546	40.127	233.435	20.293	19.834	49,4
2018	8.465	11.108	16.547	16.018	15.528	9.812	10.710	7.370	5.433	4.762	12.000	16.863	36.120	134.616	18.718	17.402	48,2
2019	3.394	5.670	10.593	6.555	5.890	6.664	2.529	4.702	6.684	9.079	10.373	19.671	19.657	91.804	10.591	9.066	46,1
2020	5.257	9.395	10.121	4.632	7.162	13.906	17.974	17.161	19.323	18.392	15.784	23.572	24.773	162.679	13.848	10.925	44,1
2021	8.370	13.755	20.071										42.196	42.196	23.131	19.065	45,2



Aylar / Months	10 Yıl Ort / 10 Years Avr.	2021	%
1	2.860	4.411	54,2
2	3.521	5.395	53,2
TOPLAM / TOTAL	6.381	9.806	53,7

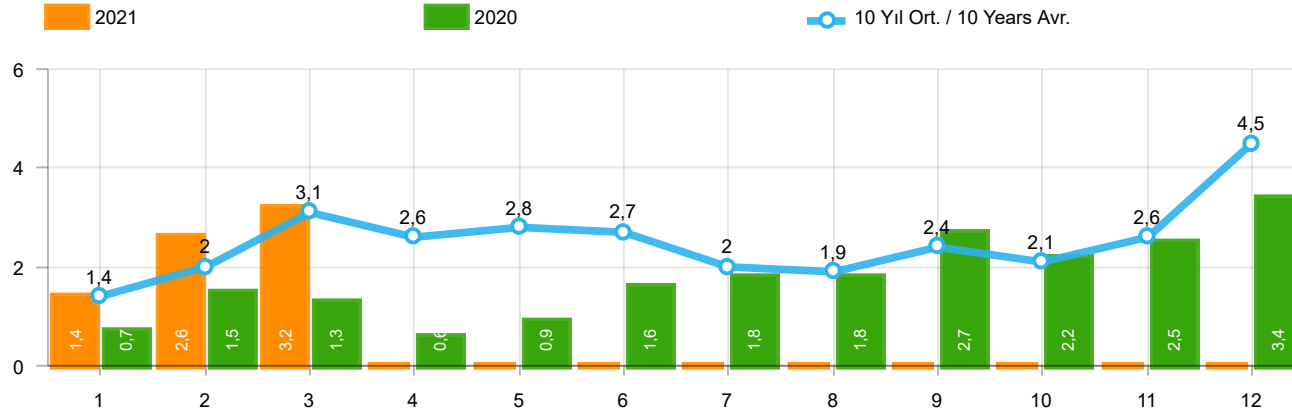
Yıl / Year	1	2	3	4	5	6	7	8	9	10	11	12	1-2 Toplam / Total	Toplam / Total
2011	2.975	5.242	5.927	5.358	6.016	6.335	4.534	4.051	4.140	5.828	4.943	4.992	8.217	60.341
2012	2.362	1.983	4.348	6.579	6.273	4.569	3.837	3.158	3.618	4.027	4.807	4.757	4.345	50.318
2013	2.161	2.432	4.005	4.585	5.616	3.136	4.574	3.408	4.935	4.762	5.781	6.891	4.593	52.286
2014	2.169	3.512	4.476	4.905	5.094	5.028	4.233	4.920	5.619	5.743	6.250	7.409	5.681	59.358
2015	3.124	3.984	5.460	6.383	6.078	5.748	4.677	5.044	4.765	7.049	6.898	7.564	7.108	66.774
2016	3.739	4.731	7.067	6.546	6.575	5.543	3.833	5.134	4.945	7.372	7.090	7.603	8.470	70.178
2017	3.974	4.964	6.773	6.780	7.057	5.356	5.003	4.396	6.064	7.734	7.457	7.351	8.938	72.909
2018	4.362	4.179	5.925	5.216	4.584	3.146	3.654	2.587	3.541	3.698	3.578	3.886	8.541	48.356
2019	1.311	1.401	2.143	2.126	2.229	1.538	2.039	1.579	2.284	2.828	3.037	3.782	2.712	26.297
2020	2.425	2.778	3.771	2.606	3.244	4.173	3.727	3.974	4.928	5.466	5.831	6.221	5.203	49.144
2021	4.411	5.395	-	-	-	-	-	-	-	-	-	-	9.806	9.806

Kaynak: TÜİK trafik kayıtları.

Rakamlar, son iki model yılına ait traktör tescillerinden oluşmaktadır.

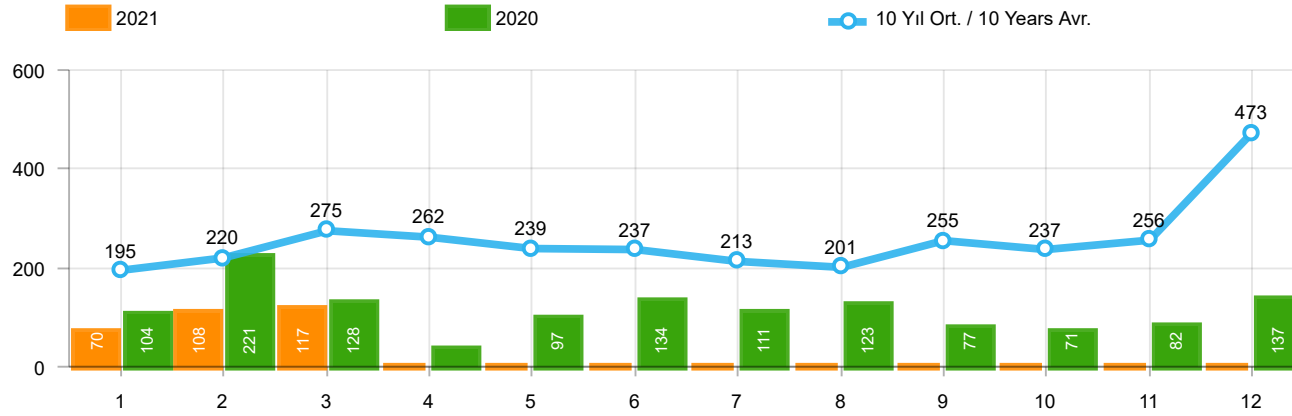
Source: Turkish Statistical Institute – Traffic registrations

Data represents the last two model year's farm tractors registration figures



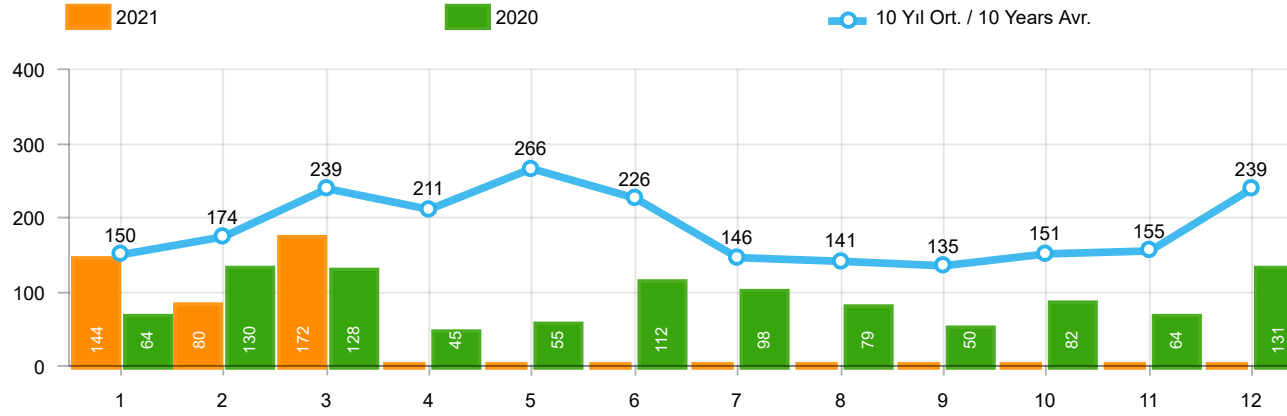
Aylar / Months	10 Yıl Ort / 10 Years Avr.	2021	%
1	1.393	1.366	-2,0
2	2.007	2.633	31,2
3	3.082	3.247	5,4
TOPLAM / TOTAL	6.482	7.246	11,8

Yıl / Year	1	2	3	4	5	6	7	8	9	10	11	12	1-3 Toplam / Total	Toplam / Total	1-3 Yerli / Local	1-3 İthal / Import	İthal Oran / Import %
2011	2.651	3.544	5.142	4.503	4.563	3.852	2.261	2.745	3.784	3.400	3.149	5.712	11.337	45.306	7.384	3.953	34,9
2012	1.703	2.454	3.866	3.209	3.678	3.540	2.750	2.403	3.296	2.497	3.154	5.300	8.023	37.850	5.841	2.182	27,2
2013	1.484	2.113	3.343	2.925	3.504	3.186	2.777	2.103	2.875	2.086	3.631	5.444	6.940	35.471	4.931	2.009	28,9
2014	1.522	2.065	3.094	3.224	3.727	3.726	2.578	2.783	3.708	2.858	3.384	6.869	6.681	39.538	5.059	1.622	24,3
2015	2.215	3.346	5.699	3.729	3.600	4.253	2.922	2.211	2.687	2.266	3.146	7.307	11.260	43.381	8.466	2.794	24,8
2016	1.167	1.648	2.515	2.319	2.711	2.623	984	1.796	1.438	2.238	2.485	3.127	5.330	25.051	3.073	2.257	42,3
2017	931	1.290	1.982	1.888	2.184	1.891	1.974	1.860	2.284	2.188	2.487	4.438	4.203	25.397	2.978	1.225	29,1
2018	1.237	1.552	2.630	2.328	1.909	1.272	1.235	603	653	488	905	1.695	5.419	16.507	3.312	2.107	38,9
2019	342	579	1.255	842	728	981	435	497	854	1.047	1.100	2.087	2.176	10.747	1.292	884	40,6
2020	682	1.475	1.290	628	921	1.570	1.809	1.835	2.660	2.239	2.537	3.358	3.447	21.004	2.288	1.159	33,6
2021	1.366	2.633	3.247										7.246	7.246	4.391	2.855	39,4



Aylar / Months	10 Yıl Ort. / 10 Years Avr.	2021	%
1	195	70	-64,1
2	220	108	-50,9
3	275	117	-57,4
TOPLAM / TOTAL	690	295	-57,2

Yıl / Year	1	2	3	4	5	6	7	8	9	10	11	12	1-3 Toplam / Total	Toplam / Total
2011	124	167	267	260	241	233	205	280	270	230	168	525	558	2.970
2012	179	257	277	229	257	239	216	249	325	269	189	398	713	3.084
2013	191	268	289	276	283	241	367	235	305	392	415	697	748	3.959
2014	360	394	384	333	294	258	216	229	395	220	266	653	1.138	4.002
2015	280	322	451	561	372	405	389	253	316	394	325	621	1.053	4.689
2016	309	158	251	302	261	196	139	220	241	230	354	431	718	3.092
2017	212	211	227	231	272	156	250	235	318	268	317	594	650	3.291
2018	134	142	410	296	207	315	180	146	160	155	184	425	686	2.754
2019	57	61	63	96	106	189	55	44	138	138	257	244	181	1.448
2020	104	221	128	35	97	134	111	123	77	71	82	137	453	1.320
2021	70	108	117										295	295

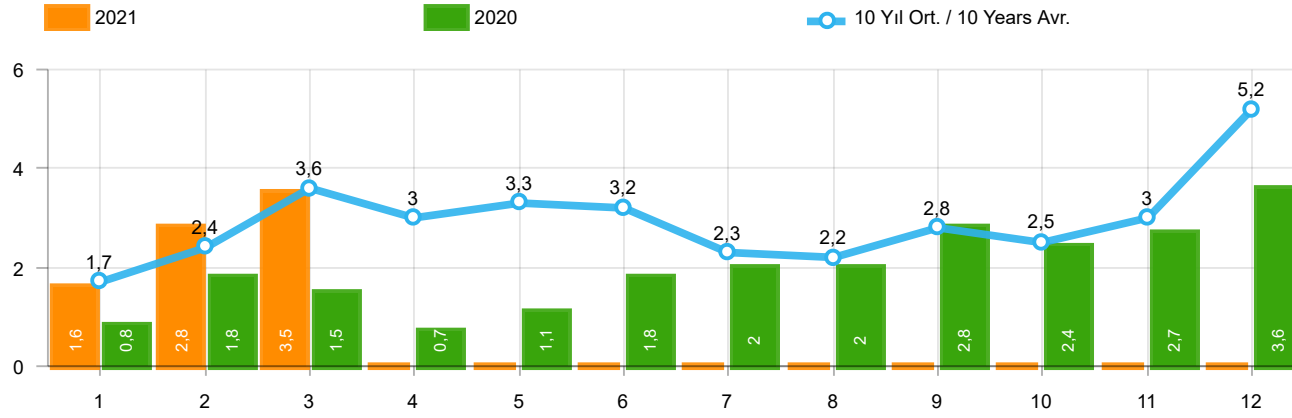


Aylar / Months	10 Yıl Ort. / 10 Years Avr.	2021	%
1	150	144	-3,9
2	174	80	-54,0
3	239	172	-28,1
TOPLAM / TOTAL	563	396	-29,6

Yıl / Year	1	2	3	4	5	6	7	8	9	10	11	12	1-3 Toplam / Total	Toplam / Total	1-3 Yerli / Local	1-3 İthal / Import	İthal Oran / Import %
2011	92	212	233	324	412	334	148	214	130	176	176	321	537	2.772	514	23	4,3
2012	125	103	215	172	397	262	174	182	251	229	150	344	443	2.604	437	6	1,4
2013	365	445	537	489	580	520	412	281	245	198	123	189	1.347	4.384	1.344	3	0,2
2014	199	179	253	251	305	148	69	92	130	91	97	332	631	2.146	551	80	12,7
2015	146	222	313	290	290	255	211	203	153	171	359	363	681	2.976	656	25	3,7
2016	180	209	218	240	214	307	76	82	141	198	314	236	607	2.415	607	-	-
2017	174	119	167	124	188	115	206	187	92	231	109	235	460	1.947	450	10	2,2
2018	78	65	215	136	125	164	45	42	74	107	113	188	358	1.352	357	1	0,3
2019	75	54	112	35	97	41	25	45	84	28	42	54	241	692	241	-	-
2020	64	130	128	45	55	112	98	79	50	82	64	131	322	1.038	322	-	-
2021	144	80	172										396	396	396	-	-

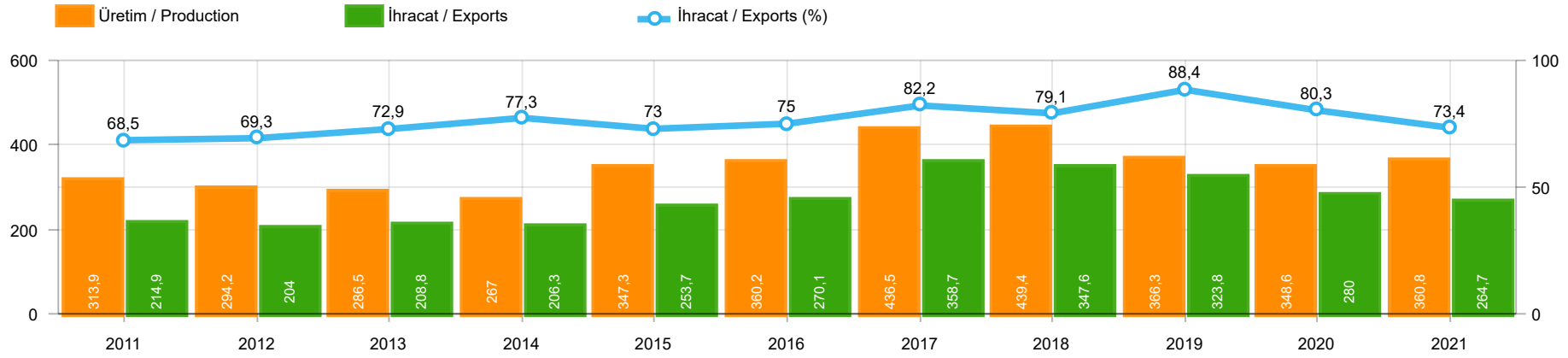
Ağır Ticari Araç Pazarının Analizi(x1000)(OCAK - MART)

HCV Market Analysis(x1000)(January - March)



Aylar / Months	10 Yıl Ort / 10 Years Avr.	2021	%
1	1.738	1.580	-9,1
2	2.401	2.821	17,5
3	3.595	3.536	-1,7
TOPLAM / TOTAL	7.734	7.937	2,6

Yıl / Year	1	2	3	4	5	6	7	8	9	10	11	12	1-3 Toplam / Total	Toplam / Total	1-3 Yerli / Local	1-3 İthal / Import	İthal Oran / Import %
2011	2.867	3.923	5.642	5.087	5.216	4.419	2.614	3.239	4.184	3.806	3.493	6.558	12.432	51.048	8.456	3.976	32,0
2012	2.007	2.814	4.358	3.610	4.332	4.041	3.140	2.834	3.872	2.995	3.493	6.042	9.179	43.538	6.991	2.188	23,8
2013	2.040	2.826	4.169	3.690	4.367	3.947	3.556	2.619	3.425	2.676	4.169	6.330	9.035	43.814	7.023	2.012	22,3
2014	2.081	2.638	3.731	3.808	4.326	4.132	2.863	3.104	4.233	3.169	3.747	7.854	8.450	45.686	6.748	1.702	20,1
2015	2.641	3.890	6.463	4.580	4.262	4.913	3.522	2.667	3.156	2.831	3.830	8.291	12.994	51.046	10.175	2.819	21,7
2016	1.656	2.015	2.984	2.861	3.186	3.126	1.199	2.098	1.820	2.666	3.153	3.794	6.655	30.558	4.398	2.257	33,9
2017	1.317	1.620	2.376	2.243	2.644	2.162	2.430	2.282	2.694	2.687	2.913	5.267	5.313	30.635	4.078	1.235	23,2
2018	1.449	1.759	3.255	2.760	2.241	1.751	1.460	791	887	750	1.202	2.308	6.463	20.613	4.355	2.108	32,6
2019	474	694	1.430	973	931	1.211	515	586	1.076	1.213	1.399	2.385	2.598	12.887	1.714	884	34,0
2020	850	1.826	1.546	708	1.073	1.816	2.018	2.037	2.787	2.392	2.683	3.626	4.222	23.362	3.063	1.159	27,5
2021	1.580	2.821	3.536										7.937	7.937	5.082	2.855	36,0



	2011	2012	2013	2014	2015	2016	2017	2018	2019	2020	2021
İhracat/Export	214.919	203.992	208.828	206.346	253.679	270.104	358.682	347.596	323.794	279.991	264.735
Üretim/Production	313.944	294.212	286.502	267.042	347.317	360.151	436.510	439.389	366.260	348.598	360.766
İhracat/Exports (%)	68,5	69,3	72,9	77,3	73	75	82,2	79,1	88,4	80,3	73,4

Taşıt Araçları İhracatı (2019 - 2021)
Motor Vehicle Exports (2019 - 2021)

SEKTÖR / SECTOR	2019	2020	1/3-2020	1/3-2021	2021/2020 %
OTOMOBİL / Pass.Car	828.744	596.616	191.608	155.457	-18,9
OTOMOBİL TOPLAM / Pass. Car Total	828.744	596.616	191.608	155.457	-18,9
KAMYON / Truck	14.824	10.333	2.281	4.417	93,6
KAMYONET / Pick Up	349.490	263.767	70.872	87.993	24,2
OTOBÜS / Bus	9.001	6.886	1.840	682	-62,9
MİNİBÜS / Minibus	49.283	38.296	9.566	12.400	29,6
MİDİBÜS / Midibus	1.244	640	181	160	-11,6
TİCARİ ARAÇLAR TOPLAM / Commercial Vehicle Total	423.842	319.922	84.740	105.652	24,7
TAŞIT ARAÇLARI TOPLAM / Motor Vehicles Total	1.252.586	916.538	276.348	261.109	-5,5
TRAKTÖR / F.Tractor	15.844	13.495	3.643	3.626	-0,5
TRAKTÖR TOPLAM / F.Tractor Total	15.844	13.495	3.643	3.626	-0,5
GENEL TOPLAM / GRAND TOTAL	1.268.430	930.033	279.991	264.735	-5,4

Üretici Bazında İhracat (adet)
Exports by Manufacturer (unit)

Üreticiler / Manufacturers	2019	2020	1-3 / 2020	1-3 / 2021
A.I.O.S.	1.433	510	181	151
FORD OTOSAN	333.734	254.003	66.580	85.012
HATTAT TRAKTÖR	637	942	226	139
HONDA TÜRKİYE	7.528	6.421	3.662	510
HYUNDAI ASSAN	169.803	128.003	37.998	36.448
KARSAN	2.713	755	65	55
M. BENZ TÜRK	16.324	11.184	2.666	3.711
MAN TÜRKİYE	2.892	2.628	841	365
OTOKAR	1.156	862	125	173
OYAK RENAULT	295.275	211.954	67.588	47.113
TEMSA	602	243	32	69
TOFAŞ	194.107	117.886	39.425	33.108
TOYOTA	227.019	182.089	57.185	54.394
TÜRK TRAKTÖR	15.207	12.553	3.417	3.487
GENEL TOPLAM / Grand Total	1.268.430	930.033	279.991	264.735

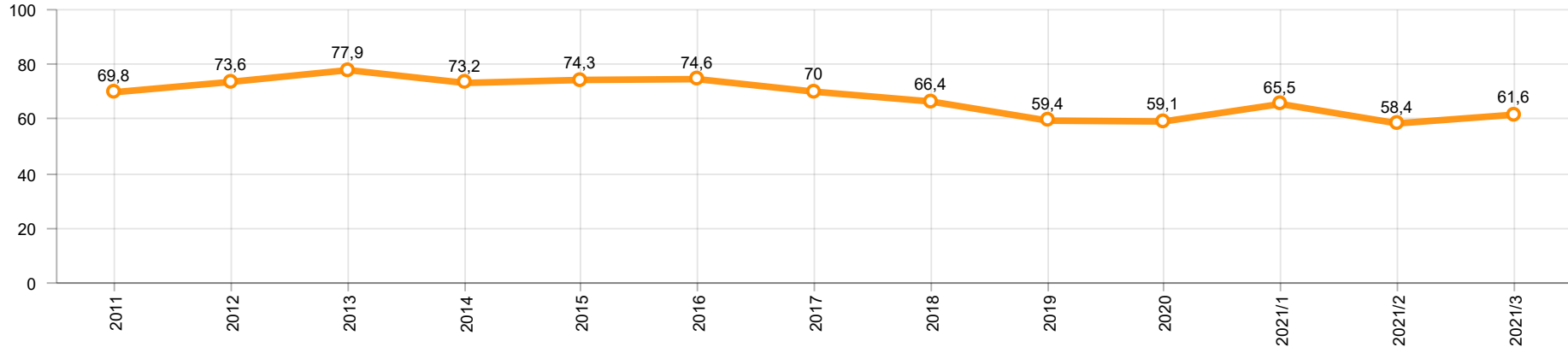
Otomotiv Ana ve Yan Sanayii İhracatı (ABD \$)
CBU and CKD Exports - \$

Sektör / Sector	2019	2020	OCAK - MART / January - March 2020	OCAK - MART / January - March 2021	2021 / 2020 %
Toplam Yan Sanayi / Total Component Industry	10.616.350.211,16	9.454.364.326,61	2.526.175.193,34	2.941.692.494,02	16,4
İç ve Dış Lastik / Tyres	1.479.050.683,54	1.248.005.046,63	322.025.888,67	364.400.069,16	13,2
Emniyet Camı / Safety Glasses	150.643.773,04	140.363.576,74	36.791.434	46.425.858,21	26,2
Motor / Engine	518.051.730,93	461.449.027,72	140.588.932,91	80.222.040,32	-42,9
Akümülatör / Batteries	397.317.829,27	353.038.607,91	71.724.416,78	106.202.643,32	48,1
Diğer Aksam ve Parça / Spare Parts&Components	8.071.286.194,38	7.251.508.067,61	1.955.044.520,98	2.344.441.883,01	19,9
Toplam Ana Sanayi / Total Vehicle Industry	20.613.753.125,48	16.491.127.868,9	4.607.292.755,18	4.876.921.052,37	5,9
Otobüs / Bus	1.759.421.232,04	1.300.660.458,98	316.252.082,04	172.936.243,64	-45,3
Midibüs-Minibüs / Midibus-Minibus	222.922.951,87	188.434.401,85	58.316.723,69	32.655.199,81	-44,0
Otomobil / P.Cars	11.864.815.315,9	9.312.088.333,82	2.879.958.725,18	2.656.279.415,79	-7,8
Kamyon-Kamyonet / Truck-Pick Up&Van	4.945.359.113,74	4.254.957.839,91	1.022.544.047,89	1.527.390.277,82	49,4
Römork ve Yarı Römork / Trailer-Semi Trailer	503.203.636,07	417.420.859,24	99.560.097,77	133.375.524,34	34,0
Çekici / Tractor	839.891.842,8	602.899.223,51	123.812.108,89	253.445.702,73	104,7
Tarım Traktörü / Farm Tractor	478.139.033,06	414.666.751,59	106.848.969,72	100.838.688,24	-5,6
Toplam / Total	31.230.103.336,64	25.945.492.195,51	7.133.467.948,52	7.818.613.546,39	9,6

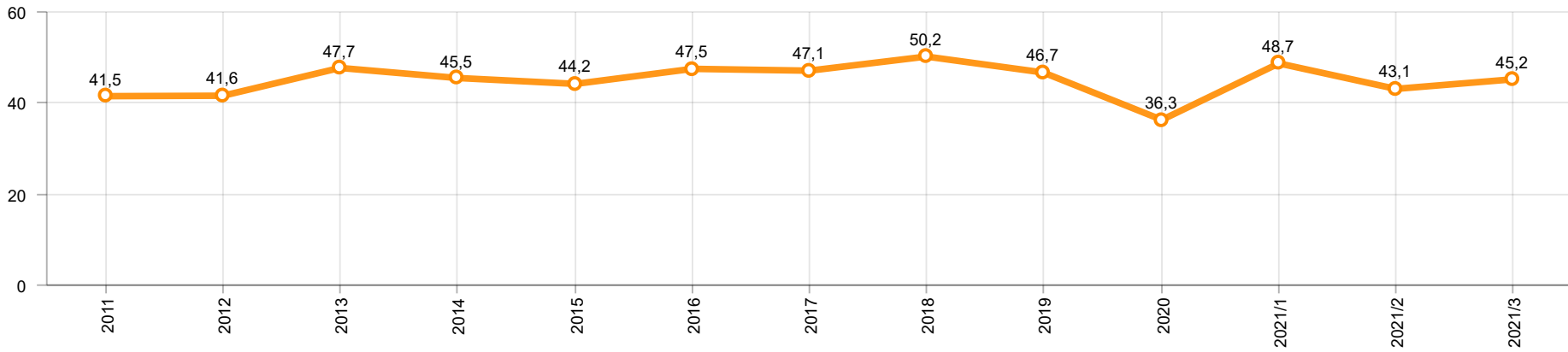
Kaynak: Uludağ İhracatçı Birlikleri . ÜİB tarafından OSD için özel olarak analiz edilen Otomotiv İhracatı kapsamında; ÜİB Türkiye Geneli Otomotiv Endüstrisi sınıflandırmasına kıyasla “Römork ve Yarı Römork” , “Tarım Traktörü” verileri dahil edilmekte; “Kullanılmış Araçlar” ,”İki Tekerlekli Taşıtlar”, “Demiryolu Taşıtları” hariç tutulmaktadır.

Source: Uludağ Exporters Association – Special Analyze for OSD.Compared to Turkish General Automotive Industry classification, this special analyze includes; farms tractors, trailers and semi-trailers, does not include; used vehicles, two-wheeled vehicles and railway vehicles

Otomobil Pazarında İthalatın Payı (%)
Import Share in P.Car Market (%)



Hafif Ticari Araçlar Pazarında İthalatın Payı (%)
Import Share in LCV Market (%)



Araç Tipleri / Vehicle Types	1	2	3	4	5	6	7	8	9	10	11	12	Toplam / Total
OTOMOBİL - Pass.Car	48.049	50.384	57.024										155.457
KAMYON - H. Truck	986	1.332	2.069										4.387
K.KAMYON - L. Truck	12	12	6										30
KAMYONET - Pick Up	25.164	31.489	31.340										87.993
OTOBÜS - Bus	121	258	303										682
MINİBÜS - Minibus	3.159	4.405	4.836										12.400
MİDİBÜS - Midibus	77	28	55										160
TİCARİ ARAÇLAR TOPLAMI - CV Total	29.519	37.524	38.609										105.652
TAŞIT ARAÇLARI TOPLAMI - MV Total	77.568	87.908	95.633										261.109
TRAKTÖR - F.Tractor	1.235	1.080	1.311										3.626
GENEL TOPLAM - Grand Total	78.803	88.988	96.944										264.735

Otomobil / P.Car

Firmalar / Firms	1	2	3	4	5	6	7	8	9	10	11	12	Toplam / Total
FORD OTOSAN	378	669	166	-	-	-	-	-	-	-	-	-	1.213
HONDA TÜRKİYE	149	118	243	-	-	-	-	-	-	-	-	-	510
HYUNDAI ASSAN	9.920	10.963	15.565	-	-	-	-	-	-	-	-	-	36.448
OYAK RENAULT	14.070	15.130	17.913	-	-	-	-	-	-	-	-	-	47.113
TOFAŞ	4.038	6.889	4.852	-	-	-	-	-	-	-	-	-	15.779
TOYOTA	19.494	16.615	18.285	-	-	-	-	-	-	-	-	-	54.394
TOPLAM - Total	48.049	50.384	57.024	-	-	-	-	-	-	-	-	-	155.457

Kamyonet / Pick-up

Firmalar / Firms	1	2	3	4	5	6	7	8	9	10	11	12	Toplam / Total
A.I.O.S.	-	-	-	-	-	-	-	-	-	-	-	-	-
FORD OTOSAN	19.856	24.107	26.608	-	-	-	-	-	-	-	-	-	70.571
KARSAN	22	16	4	-	-	-	-	-	-	-	-	-	42
OTOKAR	-	37	14	-	-	-	-	-	-	-	-	-	51
TOFAŞ	5.286	7.329	4.714	-	-	-	-	-	-	-	-	-	17.329
TOPLAM - Total	25.164	31.489	31.340	-	-	-	-	-	-	-	-	-	87.993

Minibüs / Minibus

Firmalar / Firms	1	2	3	4	5	6	7	8	9	10	11	12	Toplam / Total
FORD OTOSAN	3.159	4.404	4.826	-	-	-	-	-	-	-	-	-	12.389
KARSAN	-	1	10	-	-	-	-	-	-	-	-	-	11
TOPLAM - Total	3.159	4.405	4.836	-	-	-	-	-	-	-	-	-	12.400

Kamyon / Truck

Firmalar / Firms	1	2	3	4	5	6	7	8	9	10	11	12	Toplam / Total
A.I.O.S.	12	12	6	-	-	-	-	-	-	-	-	-	30
FORD OTOSAN	214	253	372	-	-	-	-	-	-	-	-	-	839
KARSAN	-	-	-	-	-	-	-	-	-	-	-	-	-
M. BENZ TÜRK	772	1.079	1.697	-	-	-	-	-	-	-	-	-	3.548
OTOKAR	-	-	-	-	-	-	-	-	-	-	-	-	-
TEMSA	-	-	-	-	-	-	-	-	-	-	-	-	-
TOPLAM - Total	998	1.344	2.075	-	-	-	-	-	-	-	-	-	4.417

Midibüs / Midibus

Firmalar / Firms	1	2	3	4	5	6	7	8	9	10	11	12	Toplam / Total
A.I.O.S.	31	21	47	-	-	-	-	-	-	-	-	-	99
KARSAN	-	-	2	-	-	-	-	-	-	-	-	-	2
OTOKAR	44	6	4	-	-	-	-	-	-	-	-	-	54
TEMSA	2	1	2	-	-	-	-	-	-	-	-	-	5
TOPLAM - Total	77	28	55	-	-	-	-	-	-	-	-	-	160

Otobüs / Bus

Firmalar / Firms	1	2	3	4	5	6	7	8	9	10	11	12	Toplam / Total
A.I.O.S.	8	13	1	-	-	-	-	-	-	-	-	-	22
KARSAN	-	-	-	-	-	-	-	-	-	-	-	-	-
M. BENZ TÜRK	11	106	46	-	-	-	-	-	-	-	-	-	163
MAN TÜRKİYE	42	102	221	-	-	-	-	-	-	-	-	-	365
OTOKAR	47	8	13	-	-	-	-	-	-	-	-	-	68
TEMSA	13	29	22	-	-	-	-	-	-	-	-	-	64
TOPLAM - Total	121	258	303	-	-	-	-	-	-	-	-	-	682

Traktör / F.Tractor

Firmalar / Firms	1	2	3	4	5	6	7	8	9	10	11	12	Toplam / Total
HATTAT TRAKTÖR	20	50	69	-	-	-	-	-	-	-	-	-	139
TÜRK TRAKTÖR	1.215	1.030	1.242	-	-	-	-	-	-	-	-	-	3.487
TOPLAM - Total	1.235	1.080	1.311	-	-	-	-	-	-	-	-	-	3.626

Firmalar / Firms	2020 Toplam / Total	1	2	3	4	5	6	7	8	9	10	11	12	Toplam / Total
Alfa Romeo	214	76	20	11	-	-	-	-	-	-	-	-	-	107
Aston Martin	17	3	2	4	-	-	-	-	-	-	-	-	-	9
Audi	18.168	839	747	1.899	-	-	-	-	-	-	-	-	-	3.485
Bentley	11	-	1	-	-	-	-	-	-	-	-	-	-	1
BMW	14.270	613	936	1.822	-	-	-	-	-	-	-	-	-	3.371
Citroen	22.254	1.188	1.701	2.988	-	-	-	-	-	-	-	-	-	5.877
Dacia	25.910	1.396	1.611	3.540	-	-	-	-	-	-	-	-	-	6.547
DS	694	20	35	80	-	-	-	-	-	-	-	-	-	135
Ferrari	21	1	-	5	-	-	-	-	-	-	-	-	-	6
Fiat	1.298	57	124	200	-	-	-	-	-	-	-	-	-	381
Ford	23.897	1.397	891	1.852	-	-	-	-	-	-	-	-	-	4.140
Honda	2.337	249	173	381	-	-	-	-	-	-	-	-	-	803
Hyundai	19.035	644	723	1.382	-	-	-	-	-	-	-	-	-	2.749
Jaguar	265	4	2	20	-	-	-	-	-	-	-	-	-	26
Jeep	4.369	177	266	444	-	-	-	-	-	-	-	-	-	887
Kia	13.542	1.306	1.502	1.833	-	-	-	-	-	-	-	-	-	4.641
Lamborghini	19	1	2	-	-	-	-	-	-	-	-	-	-	3
Land Rover	2.010	79	75	386	-	-	-	-	-	-	-	-	-	540
Lexus	143	21	14	12	-	-	-	-	-	-	-	-	-	47
Maserati	47	2	5	8	-	-	-	-	-	-	-	-	-	15
Mazda	156	7	10	17	-	-	-	-	-	-	-	-	-	34
Mercedes-Benz	15.617	977	984	2.243	-	-	-	-	-	-	-	-	-	4.204
Mini	1.395	141	57	137	-	-	-	-	-	-	-	-	-	335
Mitsubishi	1.237	63	61	138	-	-	-	-	-	-	-	-	-	262
Nissan	12.717	1.435	1.682	1.869	-	-	-	-	-	-	-	-	-	4.986
Opel	31.229	1.672	1.708	3.148	-	-	-	-	-	-	-	-	-	6.528
Peugeot	36.589	2.677	2.742	3.485	-	-	-	-	-	-	-	-	-	8.904
Porsche	619	41	43	126	-	-	-	-	-	-	-	-	-	210
Renault	9.339	673	985	955	-	-	-	-	-	-	-	-	-	2.613
Seat	11.551	880	1.313	1.882	-	-	-	-	-	-	-	-	-	4.075
Skoda	24.175	1.930	2.708	5.204	-	-	-	-	-	-	-	-	-	9.842
Smart	49	-	4	3	-	-	-	-	-	-	-	-	-	7
Ssangyong	650	68	66	103	-	-	-	-	-	-	-	-	-	237
Subaru	673	31	27	84	-	-	-	-	-	-	-	-	-	142
Suzuki	2.977	77	91	419	-	-	-	-	-	-	-	-	-	587
Toyota	2.016	111	113	294	-	-	-	-	-	-	-	-	-	518
Volkswagen	52.740	4.082	4.286	9.440	-	-	-	-	-	-	-	-	-	17.808
Volvo	8.200	215	425	660	-	-	-	-	-	-	-	-	-	1.300
GENEL TOPLAM - Grand Total	360.450	23.153	26.135	47.074	-	-	-	-	-	-	-	-	-	96.362

Firmalar / Firms	2020 Toplam / Total	1	2	3	4	5	6	7	8	9	10	11	12	Toplam / Total
Citroen	5.226	277	533	602	-	-	-	-	-	-	-	-	-	1.412
Dacia	4.890	768	650	772	-	-	-	-	-	-	-	-	-	2.190
Fiat	3.861	100	298	360	-	-	-	-	-	-	-	-	-	758
Ford	3.034	60	62	143	-	-	-	-	-	-	-	-	-	265
Hyundai	990	125	244	185	-	-	-	-	-	-	-	-	-	554
Isuzu	229	13	6	56	-	-	-	-	-	-	-	-	-	75
Iveco	1.851	91	209	316	-	-	-	-	-	-	-	-	-	616
Kia	1.900	152	203	256	-	-	-	-	-	-	-	-	-	611
Mercedes-Benz	5.175	155	414	637	-	-	-	-	-	-	-	-	-	1.206
Mitsubishi	4.629	402	351	418	-	-	-	-	-	-	-	-	-	1.171
Nissan	544	82	61	53	-	-	-	-	-	-	-	-	-	196
Opel	3.067	176	470	528	-	-	-	-	-	-	-	-	-	1.174
Peugeot	7.085	519	669	1.318	-	-	-	-	-	-	-	-	-	2.506
Renault	2.634	269	349	863	-	-	-	-	-	-	-	-	-	1.481
Ssangyong	434	20	30	54	-	-	-	-	-	-	-	-	-	104
Toyota	1.417	238	62	995	-	-	-	-	-	-	-	-	-	1.295
Volkswagen	12.036	626	1.315	1.510	-	-	-	-	-	-	-	-	-	3.451
GENEL TOPLAM - Grand Total	59.002	4.073	5.926	9.066	-	-	-	-	-	-	-	-	-	19.065