



OTOMOTİV SANAYİİ DERNEĐİ
AUTOMOTIVE MANUFACTURERS ASSOCIATION

**OTOMOTİV SEKTÖRÜ
AYLIK DEĐERLENDİRME RAPORU
TEMMUZ 2020**

**AUTOMOTIVE INDUSTRY MONTHLY REPORT
July 2020**

OSD "OICA" Üyesidir  O I C A OSD is a Member of "OICA"

	7 - 2019	7 - 2020	%	1 - 7 / 2019	1 - 7 / 2020	%	8/2018 - 7/2019	8/2019 - 7/2020	%
Otomobil Üretimi/P.Cars Production	86.235	77.706	-9,9	578.935	440.103	-24,0	951.593	843.810	-11,3
Toplam Üretim/Total Production	133.882	118.030	-11,8	868.940	636.757	-26,7	1.432.145	1.229.061	-14,2
Otomobil Pazar/P.Cars Market	15.398	69.427	350,9	171.776	273.022	58,9	340.203	488.502	43,6
Toplam Pazar/Total Market	18.442	89.407	384,8	219.299	351.319	60,2	440.092	623.967	41,8
Otomobil İthalat/P.Cars Import	8.459	41.517	390,8	96.644	165.771	71,5	208.844	299.205	43,3
Toplam İthalat/Total Import	9.944	48.641	389,2	118.139	195.262	65,3	256.909	354.192	37,9
Otomobil İhracat/P.Cars Export	73.598	52.088	-29,2	492.644	333.725	-32,3	825.041	669.825	-18,8
Toplam İhracat/Total Export	117.289	78.242	-33,3	752.062	480.425	-36,1	1.259.663	980.949	-22,1
Otomobil İhracat(\$)/P.Cars Export (\$)	1.140.646.525,99	782.473.117,92	-31,4	6.896.429.057	5.026.076.018	-27,1	11.664.219.351	9.994.462.277	-14,3
Toplam İhracat(\$)/Total Export (\$)*	2.954.853.493,38	2.227.405.251,64	-24,6	18.540.912.408	13.203.179.381	-28,8	31.172.468.920	25.892.350.212	-16,9

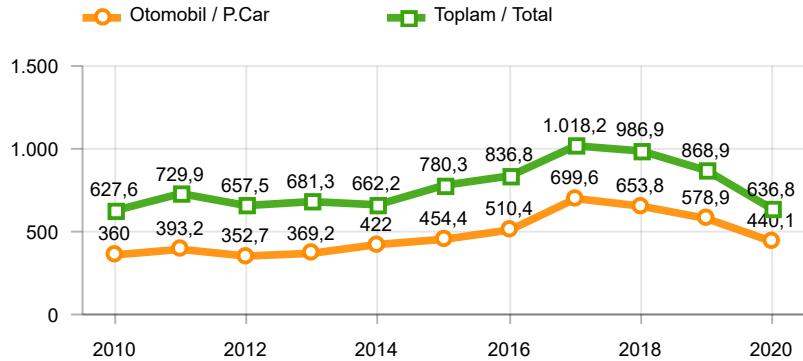
Parametreler/Parameters	7 - 2019	7 - 2020	%	1 - 7 / 2019	1 - 7 / 2020	%	8/2018 - 7/2019	8/2019 - 7/2020	%
ÜFE / PPI	-1,0	1,0	-	7,0	8,0	-	32,3	6,8	-
TÜFE / CPI	1,4	0,6	-	6,4	6,4	-	19,9	11,5	-
Sanayi Endeksi / Industry Index	-0,8	1,0	-	7,3	8,2	-	30,6	6,2	-
Dolar \$ ** (1 birim)	5,6	6,8	22,3	5,6	6,5	17,2	5,6	6,2	10,4
Euro € ** (1 birim)	6,3	7,8	24,2	6,3	7,3	15,0	6,4	6,9	7,3
Japon Yeni ¥ ** (100 birim)	5,1	6,4	24,0	5,1	6,0	19,3	5,0	5,7	13,4

*Toplam Sanayi / Total Industry Including Components

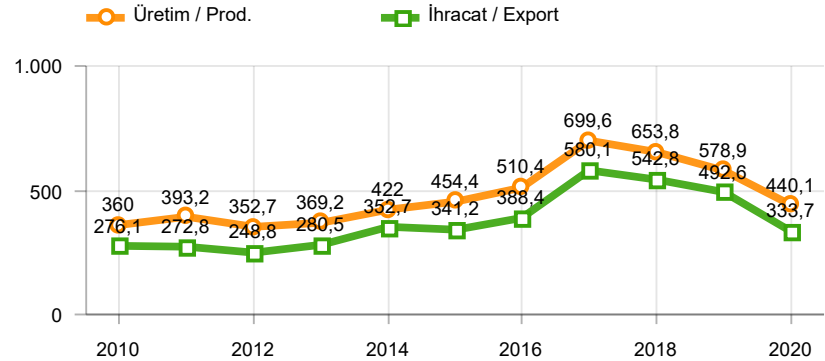
** Ortalama Değerler / Average Values

Araç Tipleri / Types	7 / 2019	7 / 2020	7 % Değişim	1-7 / 2019	1-7 / 2020	1-7 % Değişim
OTOMOBİL / Pass.Car	86.235	77.706	-9,9	578.935	440.103	-24,0
OTOMOBİL Toplam / Pass.Car Total	86.235	77.706	-9,9	578.935	440.103	-24,0
B.KAMYON / H. Truck	2.284	1.981	-13,3	11.120	9.039	-18,7
K.KAMYON / L. Truck	63	175	177,8	413	777	88,1
KAMYONET / Pick Up	37.533	31.749	-15,4	236.667	154.450	-34,7
OTOBÜS / Bus	881	738	-16,2	5.607	4.552	-18,8
MİNİBÜS / Minibus	6.635	5.457	-17,8	34.876	26.694	-23,5
MİDİBÜS / Midibus	251	224	-10,8	1.322	1.142	-13,6
TİCARİ ARAÇLAR Toplam / Commercial Vehicles Total	47.647	40.324	-15,4	290.005	196.654	-32,2
TAŞIT ARAÇLARI Toplam / Motor Vehicles Total	133.882	118.030	-11,8	868.940	636.757	-26,7
TRAKTÖR / F.Tractor	2.042	3.313	62,2	12.612	16.835	33,5
TRAKTÖR Toplam / F.Tractor Total	2.042	3.313	62,2	12.612	16.835	33,5
GENEL TOPLAM / Grand Total	135.924	121.343	-10,7	881.552	653.592	-25,9

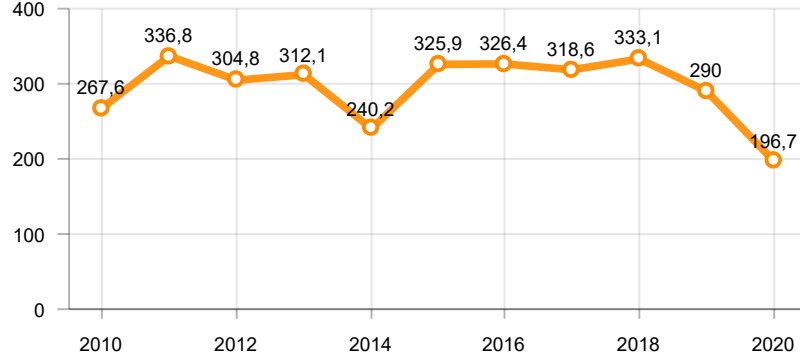
Toplam Üretim ve Otomobil Üretimi (x1000)(OCAK - TEMMUZ)
Total & P.Cars Production (x1000)(January - July)



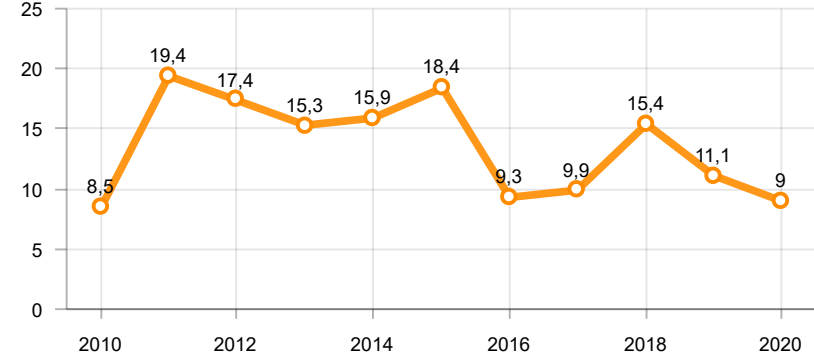
Otomobil Üretimi ve İhracat (x1000)(OCAK - TEMMUZ)
P.Cars Production & Exports (x1000)(January - July)



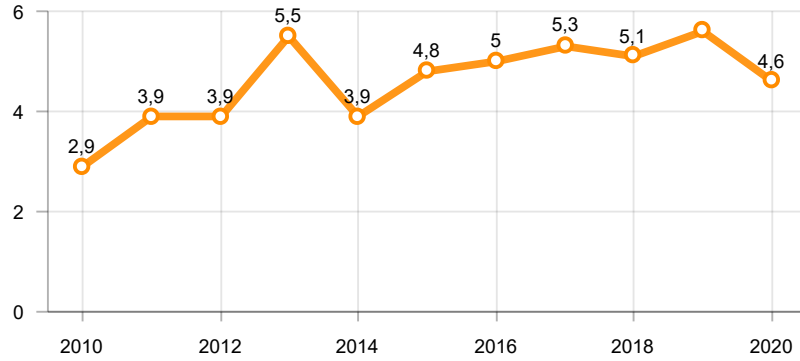
Ticari Araç Üretimi (x1000)(OCAK - TEMMUZ)
Commercial Vehicle Production (x1000)(January - July)



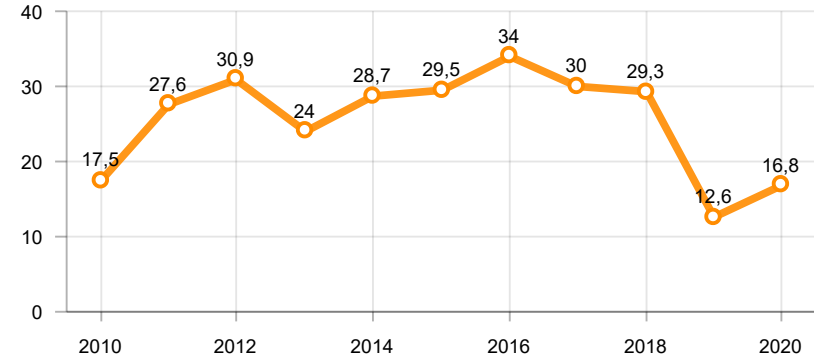
Büyük Kamyon Üretimi (x1000)(OCAK - TEMMUZ)
Heavy Truck Production (x1000)(January - July)

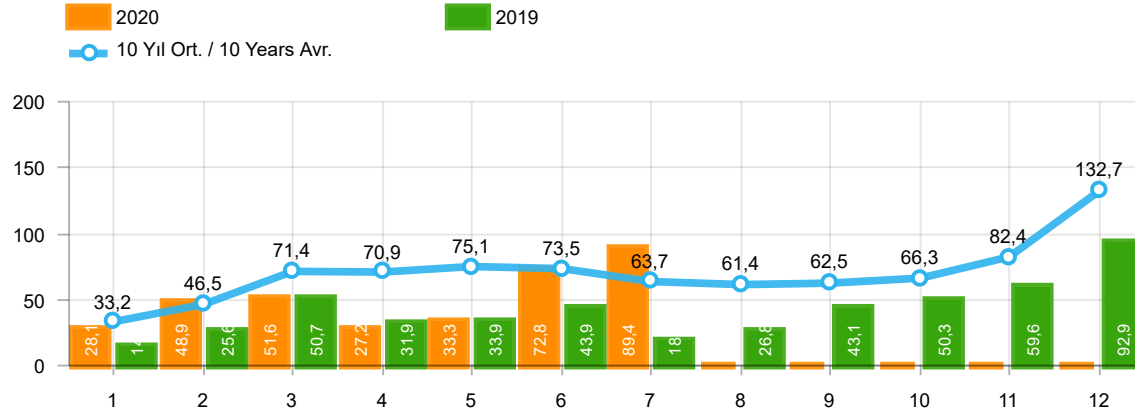


Otobüs Üretimi (x1000)(OCAK - TEMMUZ)
Bus Production (x1000)(January - July)



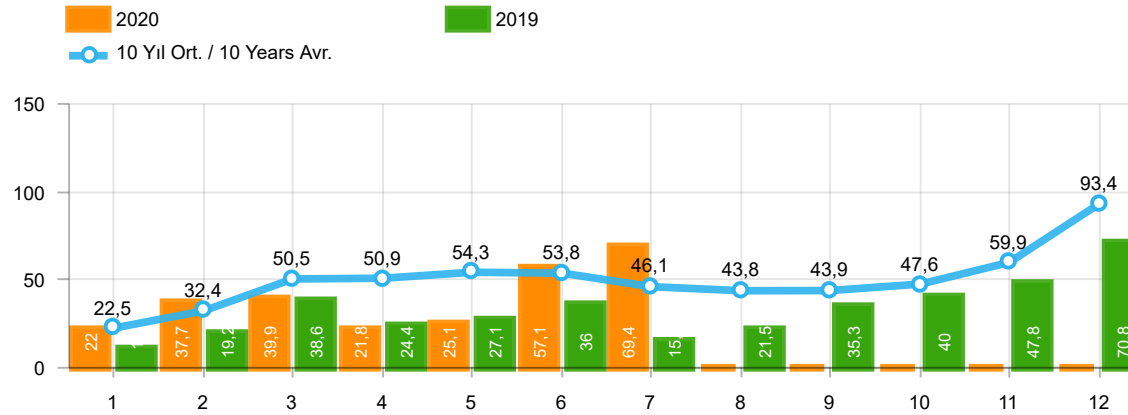
Traktör Üretimi (x1000)(OCAK - TEMMUZ)
F. Tractor Production (x1000)(January - July)





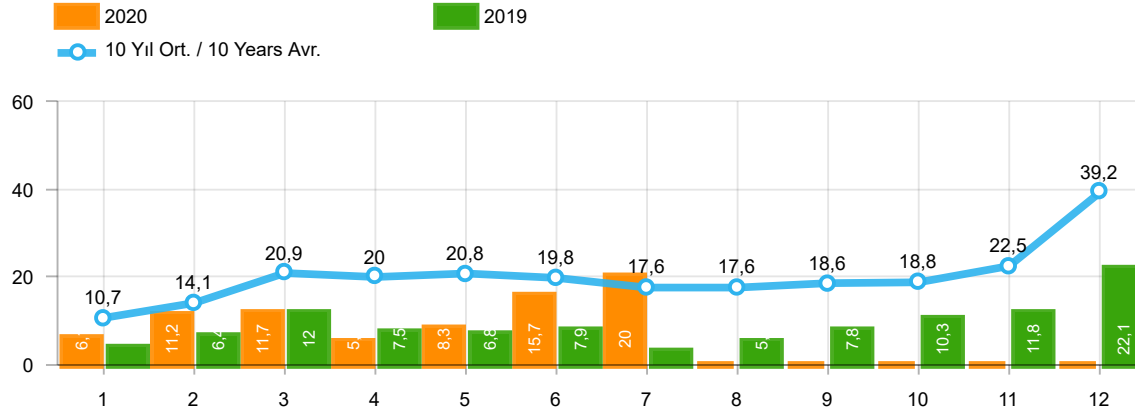
Aylar / Months	10 Yıl Ort / 10 Years Avr.	2020	%
1	33.233	28.123	-15,4
2	46.483	48.948	5,3
3	71.368	51.554	-27,8
4	70.895	27.165	-61,7
5	75.107	33.333	-55,6
6	73.519	72.789	-1,0
7	63.748	89.407	40,3
TOPLAM/TOTAL	434.356	351.319	-19,1

Yıl / Year	1	2	3	4	5	6	7	8	9	10	11	12	1-7 Toplam / Total	Toplam / Total	1-7 Yerli / Local	1-7 İthal / Import	İthal Oran / Import %
2010	21.070	32.331	54.019	57.241	61.837	63.511	64.011	64.961	67.040	76.753	77.488	155.234	354.020	795.496	151.107	202.913	57,3
2011	47.759	62.586	84.045	82.782	85.862	85.992	65.658	61.645	64.313	73.227	67.150	134.468	514.684	915.487	208.152	306.532	59,6
2012	31.552	44.138	69.242	66.559	75.195	75.108	65.444	60.982	73.501	62.933	75.203	121.442	427.238	821.299	164.294	262.944	61,5
2013	37.563	51.133	72.943	77.265	85.835	78.043	75.152	67.662	71.388	60.690	83.470	136.048	477.934	897.192	149.951	327.983	68,6
2014	34.751	37.659	51.312	57.113	62.447	64.295	62.770	63.303	70.764	69.742	84.368	154.843	370.347	813.367	124.339	246.008	66,4
2015	37.256	59.221	89.765	96.182	85.804	91.071	87.358	85.244	67.181	67.086	88.431	164.464	546.657	1.019.063	192.591	354.066	64,8
2016	34.369	54.840	85.932	87.748	97.090	94.666	59.732	73.654	69.413	85.666	125.462	145.706	514.377	1.014.278	169.892	344.485	67,0
2017	36.640	48.585	76.178	78.231	88.066	85.820	84.727	74.818	74.046	94.439	103.772	141.507	498.247	986.829	184.718	313.529	62,9
2018	36.525	48.768	79.600	73.886	74.996	52.788	54.194	35.137	23.915	22.321	59.406	80.014	420.757	641.550	162.259	258.498	61,4
2019	14.847	25.569	50.651	31.944	33.947	43.899	18.442	26.832	43.068	50.288	59.575	92.885	219.299	491.947	101.160	118.139	53,9
2020	28.123	48.948	51.554	27.165	33.333	72.789	89.407						351.319	351.319	156.057	195.262	55,6



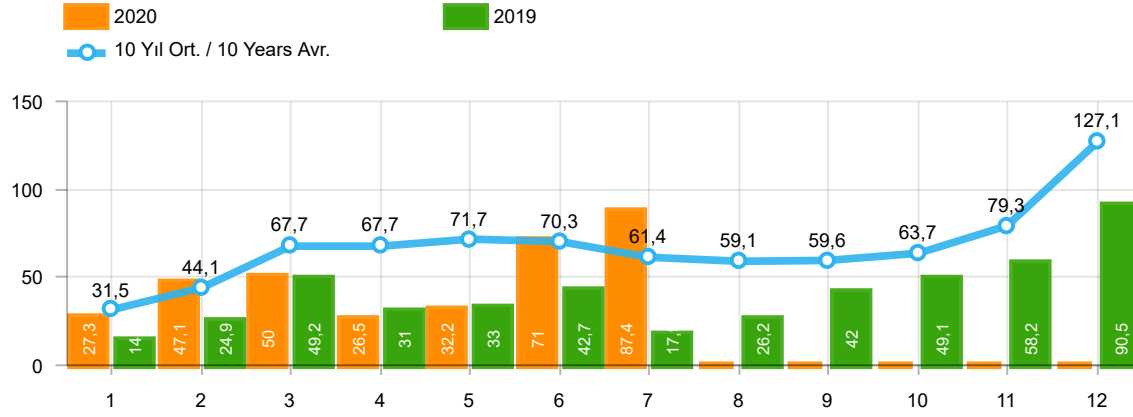
Aylar / Months	10 Yıl Ort / 10 Years Avr.	2020	%
1	22.488	22.016	-2,1
2	32.399	37.727	16,4
3	50.454	39.887	-20,9
4	50.915	21.825	-57,1
5	54.285	25.073	-53,8
6	53.751	57.067	6,2
7	46.135	69.427	50,5
TOPLAM / TOTAL	310.427	273.022	-12,1

Yıl / Year	1	2	3	4	5	6	7	8	9	10	11	12	1-7 Toplam / Total	Toplam / Total	1-7 Yerli / Local	1-7 İthal / Import	İthal Oran / Import %
2010	12.594	20.651	33.958	36.549	40.467	42.086	41.399	42.222	42.477	47.859	50.061	99.461	227.704	509.784	72.553	155.151	68,1
2011	29.868	39.004	54.023	53.835	56.302	56.714	43.518	38.875	39.964	47.508	44.951	88.957	333.264	593.519	103.557	229.707	68,9
2012	21.077	29.189	47.270	45.645	50.460	50.849	44.531	41.236	49.360	43.440	52.297	80.926	289.021	556.280	80.884	208.137	72,0
2013	25.835	36.814	51.785	56.999	62.383	58.290	55.712	51.611	52.925	46.985	64.117	101.199	347.818	664.655	76.152	271.666	78,1
2014	24.368	27.167	37.812	42.769	46.379	47.278	46.602	45.131	49.262	50.814	59.695	110.054	272.375	587.331	68.746	203.629	74,8
2015	24.498	40.817	61.676	70.211	62.878	67.766	64.218	61.753	47.088	47.954	62.397	114.340	392.064	725.596	100.601	291.463	74,3
2016	23.358	40.588	63.975	65.618	73.832	71.111	45.566	53.977	51.340	63.746	95.783	108.044	384.048	756.938	97.512	286.536	74,6
2017	25.689	34.658	55.616	57.998	65.799	66.164	62.384	54.890	53.423	70.488	75.956	99.694	368.308	722.759	114.704	253.604	68,9
2018	26.611	35.901	59.798	55.108	57.227	41.225	42.024	26.976	17.595	16.809	46.204	60.843	317.894	486.321	107.178	210.716	66,3
2019	10.979	19.205	38.628	24.416	27.126	36.024	15.398	21.544	35.308	39.996	47.803	70.829	171.776	387.256	75.132	96.644	56,3
2020	22.016	37.727	39.887	21.825	25.073	57.067	69.427						273.022	273.022	107.251	165.771	60,7



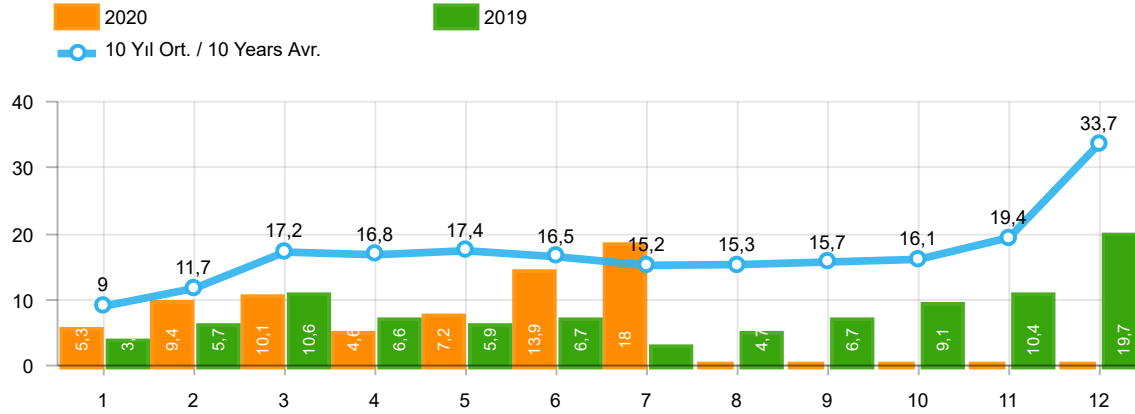
Aylar / Months	10 Yıl Ort / 10 Years Avr.	2020	%
1	10.746	6.107	-43,2
2	14.084	11.221	-20,3
3	20.915	11.667	-44,2
4	19.980	5.340	-73,3
5	20.823	8.260	-60,3
6	19.769	15.722	-20,5
7	17.614	19.980	13,4
TOPLAM / TOTAL	123.929	78.297	-36,8

Yıl / Year	1	2	3	4	5	6	7	8	9	10	11	12	1-7 Toplam / Total	Toplam / Total	1-7 Yerli / Local	1-7 İthal / Import	İthal Oran / Import %
2010	8.476	11.680	20.061	20.692	21.370	21.425	22.612	22.739	24.563	28.894	27.427	55.773	126.316	285.712	78.554	47.762	37,8
2011	17.891	23.582	30.022	28.947	29.560	29.278	22.140	22.770	24.349	25.719	22.199	45.511	181.420	321.968	104.595	76.825	42,3
2012	10.475	14.949	21.972	20.914	24.735	24.259	20.913	19.746	24.141	19.493	22.906	40.516	138.217	265.019	83.410	54.807	39,7
2013	11.728	14.319	21.158	20.266	23.452	19.753	19.440	16.051	18.463	13.705	19.353	34.849	130.116	232.537	73.799	56.317	43,3
2014	10.383	10.492	13.500	14.344	16.068	17.017	16.168	18.172	21.502	18.928	24.673	44.789	97.972	226.036	55.593	42.379	43,3
2015	12.758	18.404	28.089	25.971	22.926	23.305	23.140	23.491	20.093	19.132	26.034	50.124	154.593	293.467	91.990	62.603	40,5
2016	11.011	14.252	21.957	22.130	23.258	23.555	14.166	19.677	18.073	21.920	29.679	37.662	130.329	257.340	72.380	57.949	44,5
2017	10.951	13.927	20.562	20.233	22.267	19.656	22.343	19.928	20.623	23.951	27.816	41.813	129.939	264.070	70.014	59.925	46,1
2018	9.914	12.867	19.802	18.778	17.769	11.563	12.170	8.161	6.320	5.512	13.202	19.171	102.863	155.229	55.081	47.782	46,5
2019	3.868	6.364	12.023	7.528	6.821	7.875	3.044	5.288	7.760	10.292	11.772	22.056	47.523	104.691	26.028	21.495	45,2
2020	6.107	11.221	11.667	5.340	8.260	15.722	19.980						78.297	78.297	48.806	29.491	37,7



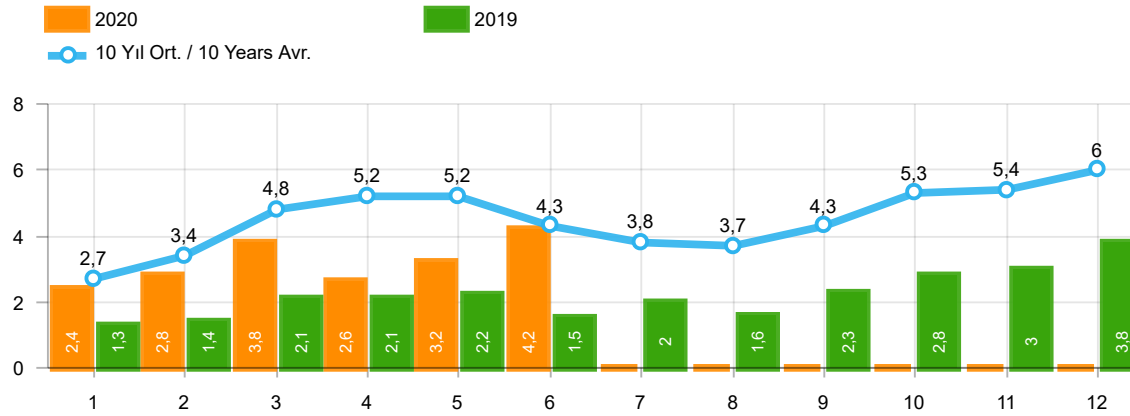
Aylar / Months	10 Yıl Ort / 10 Years Avr.	2020	%
1	31.483	27.273	-13,4
2	44.149	47.122	6,7
3	67.703	50.008	-26,1
4	67.704	26.457	-60,9
5	71.711	32.235	-55,0
6	70.288	70.973	1,0
7	61.352	87.401	42,5
TOPLAM / TOTAL	414.390	341.469	-17,6

Yıl / Year	1	2	3	4	5	6	7	8	9	10	11	12	1-7 Toplam / Total	Toplam / Total	1-7 Yerli / Local	1-7 İthal / Import	İthal Oran / Import %
2010	20.095	31.172	51.769	54.946	59.377	60.896	61.345	61.764	63.814	73.404	73.962	148.369	339.600	760.913	140.328	199.272	58,7
2011	44.892	58.663	78.403	77.695	80.646	81.573	63.044	58.406	60.129	69.421	63.657	127.910	484.916	864.439	187.856	297.060	61,3
2012	29.545	41.324	64.884	62.949	70.863	71.067	62.304	58.148	69.629	59.938	71.710	115.400	402.936	777.761	146.652	256.284	63,6
2013	35.523	48.307	68.774	73.575	81.468	74.096	71.596	65.043	67.963	58.014	79.301	129.718	453.339	853.378	131.242	322.097	71,0
2014	32.670	35.021	47.581	53.305	58.121	60.163	59.907	60.199	66.531	66.573	80.621	146.989	346.768	767.681	106.223	240.545	69,4
2015	34.615	55.331	83.302	91.602	81.542	86.158	83.836	82.577	64.025	64.255	84.601	156.173	516.386	968.017	169.943	346.443	67,1
2016	32.713	52.825	82.948	84.887	93.904	91.540	58.533	71.556	67.593	83.000	122.309	141.912	497.350	983.720	157.337	340.013	68,4
2017	35.323	46.965	73.802	75.988	85.422	83.658	82.297	72.536	71.352	91.752	100.859	136.240	483.455	956.194	173.698	309.757	64,1
2018	35.076	47.009	76.345	71.126	72.755	51.037	52.734	34.346	23.028	21.571	58.204	77.706	406.082	620.937	152.578	253.504	62,4
2019	14.373	24.875	49.221	30.971	33.016	42.688	17.927	26.246	41.992	49.075	58.176	90.500	213.071	479.060	96.931	116.140	54,5
2020	27.273	47.122	50.008	26.457	32.235	70.973	87.401						341.469	341.469	149.203	192.266	56,3



Aylar / Months	10 Yıl Ort / 10 Years Avr.	2020	%
1	8.995	5.257	-41,6
2	11.750	9.395	-20,0
3	17.249	10.121	-41,3
4	16.790	4.632	-72,4
5	17.426	7.162	-58,9
6	16.537	13.906	-15,9
7	15.217	17.974	18,1
TOPLAM / TOTAL	103.963	68.447	-34,2

Yıl / Year	1	2	3	4	5	6	7	8	9	10	11	12	1-7 Toplam / Total	Toplam / Total	1-7 Yerli / Local	1-7 İthal / Import	İthal Oran / Import %
2010	7.501	10.521	17.811	18.397	18.910	18.810	19.946	19.542	21.337	25.545	23.901	48.908	111.896	251.129	67.775	44.121	39,4
2011	15.024	19.659	24.380	23.860	24.344	24.859	19.526	19.531	20.165	21.913	18.706	38.953	151.652	270.920	84.299	67.353	44,4
2012	8.468	12.135	17.614	17.304	20.403	20.218	17.773	16.912	20.269	16.498	19.413	34.474	113.915	221.481	65.768	48.147	42,3
2013	9.688	11.493	16.989	16.576	19.085	15.806	15.884	13.432	15.038	11.029	15.184	28.519	105.521	188.723	55.090	50.431	47,8
2014	8.302	7.854	9.769	10.536	11.742	12.885	13.305	15.068	17.269	15.759	20.926	36.935	74.393	180.350	37.477	36.916	49,6
2015	10.117	14.514	21.626	21.391	18.664	18.392	19.618	20.824	16.937	16.301	22.204	41.833	124.322	242.421	69.342	54.980	44,2
2016	9.355	12.237	18.973	19.269	20.072	20.429	12.967	17.579	16.253	19.254	26.526	33.868	113.302	226.782	59.825	53.477	47,2
2017	9.634	12.307	18.186	17.990	19.623	17.494	19.913	17.646	17.929	21.264	24.903	36.546	115.147	233.435	58.994	56.153	48,8
2018	8.465	11.108	16.547	16.018	15.528	9.812	10.710	7.370	5.433	4.762	12.000	16.863	88.188	134.616	45.400	42.788	48,5
2019	3.394	5.670	10.593	6.555	5.890	6.664	2.529	4.702	6.684	9.079	10.373	19.671	41.295	91.804	21.799	19.496	47,2
2020	5.257	9.395	10.121	4.632	7.162	13.906	17.974						68.447	68.447	41.952	26.495	38,7



Aylar / Months	10 Yıl Ort / 10 Years Avr.	2020	%
1	2.729	2.425	-11,1
2	3.442	2.778	-19,3
3	4.845	3.771	-22,2
4	5.152	2.606	-49,4
5	5.209	3.244	-37,7
6	4.304	4.173	-3,0
TOPLAM / TOTAL	25.680	18.997	-26,0

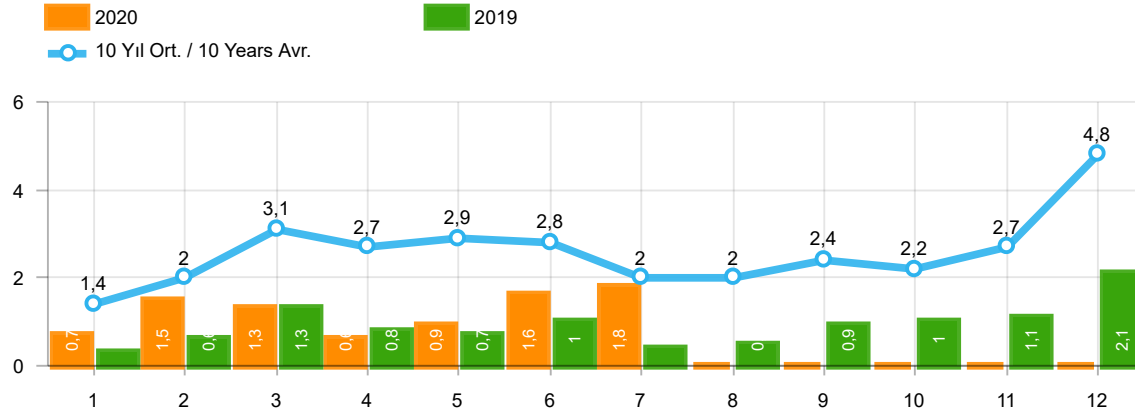
Yıl / Year	1	2	3	4	5	6	7	8	9	10	11	12	1-6 Toplam / Total	Toplam / Total
2010	1.111	1.991	2.330	3.039	2.567	2.638	1.965	3.019	2.806	4.424	3.978	6.168	13.676	36.036
2011	2.975	5.242	5.927	5.358	6.016	6.335	4.534	4.051	4.140	5.828	4.943	4.992	31.853	60.341
2012	2.362	1.983	4.348	6.579	6.273	4.569	3.837	3.158	3.618	4.027	4.807	4.757	26.114	50.318
2013	2.161	2.432	4.005	4.585	5.616	3.136	4.574	3.408	4.935	4.762	5.781	6.891	21.935	52.286
2014	2.169	3.512	4.476	4.905	5.094	5.028	4.233	4.920	5.619	5.743	6.250	7.409	25.184	59.358
2015	3.124	3.984	5.460	6.383	6.078	5.748	4.677	5.044	4.765	7.049	6.898	7.564	30.777	66.774
2016	3.739	4.731	7.067	6.546	6.575	5.543	3.833	5.134	4.945	7.372	7.090	7.603	34.201	70.178
2017	3.974	4.964	6.773	6.780	7.057	5.356	5.003	4.396	6.064	7.734	7.457	7.351	34.904	72.909
2018	4.362	4.179	5.925	5.216	4.584	3.146	3.654	2.587	3.541	3.698	3.578	3.886	27.412	48.356
2019	1.311	1.401	2.143	2.126	2.229	1.538	2.039	1.579	2.284	2.828	3.037	3.782	10.748	26.297
2020	2.425	2.778	3.771	2.606	3.244	4.173	-	-	-	-	-	-	18.997	18.997

Kaynak: TÜİK trafik kayıtları.

Rakamlar, son iki model yılına ait traktör tescillerinden oluşmaktadır.

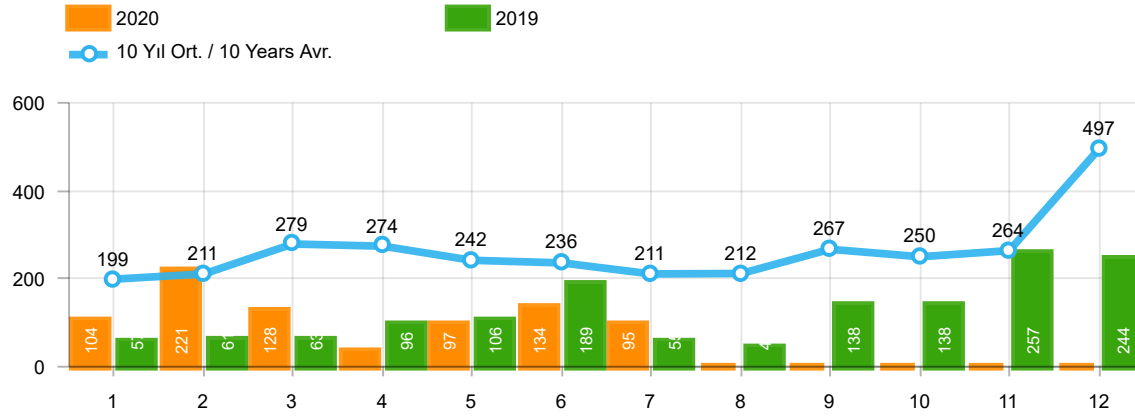
Source: Turkish Statistical Institute – Traffic registrations

Data represents the last two model year's farm tractors registration figures



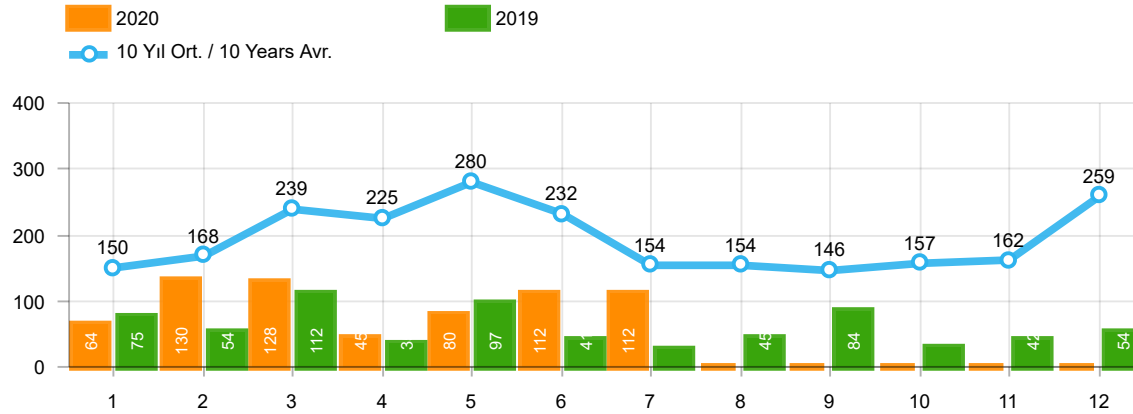
Aylar / Months	10 Yıl Ort / 10 Years Avr.	2020	%
1	1.402	682	-51,4
2	1.955	1.475	-24,6
3	3.148	1.290	-59,0
4	2.692	628	-76,7
5	2.874	921	-68,0
6	2.764	1.570	-43,2
7	2.032	1.799	-11,5
TOPLAM / TOTAL	16.866	8.365	-50,4

Yıl / Year	1	2	3	4	5	6	7	8	9	10	11	12	1-7 Toplam / Total	Toplam / Total	1-7 Yerli / Local	1-7 İthal / Import	İthal Oran / Import %
2010	768	960	1.950	1.949	2.140	2.314	2.403	2.754	2.864	3.001	3.231	6.158	12.484	30.492	8.891	3.593	28,8
2011	2.651	3.544	5.142	4.503	4.563	3.852	2.261	2.745	3.784	3.400	3.149	5.712	26.516	45.306	17.121	9.395	35,4
2012	1.703	2.454	3.866	3.209	3.678	3.540	2.750	2.403	3.296	2.497	3.154	5.300	21.200	37.850	14.572	6.628	31,3
2013	1.484	2.113	3.343	2.925	3.504	3.186	2.777	2.103	2.875	2.086	3.631	5.444	19.332	35.471	13.465	5.867	30,3
2014	1.522	2.065	3.094	3.224	3.727	3.726	2.578	2.783	3.708	2.858	3.384	6.869	19.936	39.538	14.616	5.320	26,7
2015	2.215	3.346	5.699	3.729	3.600	4.253	2.922	2.211	2.687	2.266	3.146	7.307	25.764	43.381	18.207	7.557	29,3
2016	1.167	1.648	2.515	2.319	2.711	2.623	984	1.796	1.438	2.238	2.485	3.127	13.967	25.051	9.526	4.441	31,8
2017	931	1.290	1.982	1.888	2.184	1.891	1.974	1.860	2.284	2.188	2.487	4.438	12.140	25.397	8.380	3.760	31,0
2018	1.237	1.552	2.630	2.328	1.909	1.272	1.235	603	653	488	905	1.695	12.163	16.507	7.180	4.983	41,0
2019	342	579	1.255	842	728	981	435	497	854	1.047	1.100	2.087	5.162	10.747	3.163	1.999	38,7
2020	682	1.475	1.290	628	921	1.570	1.799						8.365	8.365	5.369	2.996	35,8



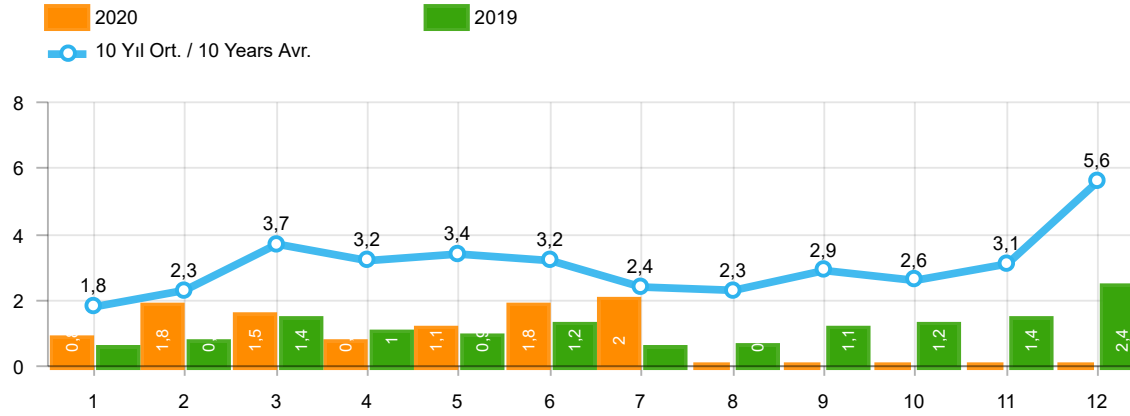
Aylar / Months	10 Yıl Ort / 10 Years Avr.	2020	%
1	199	104	-47,6
2	211	221	4,8
3	279	128	-54,1
4	274	35	-87,2
5	242	97	-59,9
6	236	134	-43,1
7	211	95	-55,0
TOPLAM / TOTAL	1.651	814	-50,7

Yıl / Year	1	2	3	4	5	6	7	8	9	10	11	12	1-7 Toplam / Total	Toplam / Total
2010	140	128	172	153	127	124	93	232	199	204	162	382	937	2.116
2011	124	167	267	260	241	233	205	280	270	230	168	525	1.497	2.970
2012	179	257	277	229	257	239	216	249	325	269	189	398	1.654	3.084
2013	191	268	289	276	283	241	367	235	305	392	415	697	1.915	3.959
2014	360	394	384	333	294	258	216	229	395	220	266	653	2.239	4.002
2015	280	322	451	561	372	405	389	253	316	394	325	621	2.780	4.689
2016	309	158	251	302	261	196	139	220	241	230	354	431	1.616	3.092
2017	212	211	227	231	272	156	250	235	318	268	317	594	1.559	3.291
2018	134	142	410	296	207	315	180	146	160	155	184	425	1.684	2.754
2019	57	61	63	96	106	189	55	44	138	138	257	244	627	1.448
2020	104	221	128	35	97	134	95						814	814



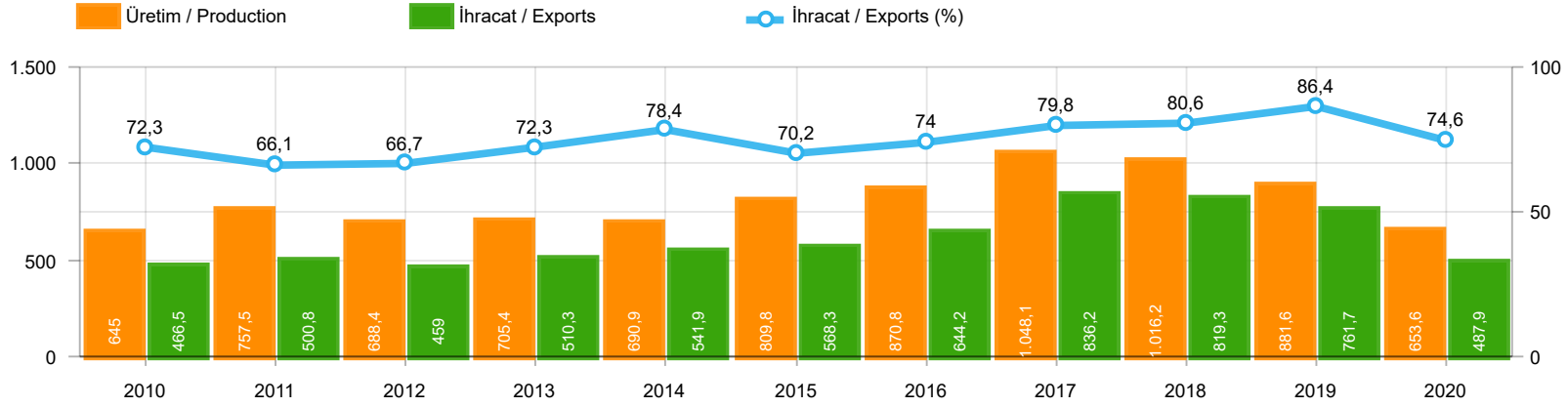
Aylar / Months	10 Yıl Ort / 10 Years Avr.	2020	%
1	150	64	-57,4
2	168	130	-22,6
3	239	128	-46,5
4	225	45	-80,0
5	280	80	-71,4
6	232	112	-51,8
7	154	112	-27,1
TOPLAM / TOTAL	1.449	671	-53,7

Yıl / Year	1	2	3	4	5	6	7	8	9	10	11	12	1-7 Toplam / Total	Toplam / Total	1-7 Yerli / Local	1-7 İthal / Import	İthal Oran / Import %
2010	67	71	128	193	193	177	170	211	163	144	133	325	999	1.975	951	48	4,8
2011	92	212	233	324	412	334	148	214	130	176	176	321	1.755	2.772	1.678	77	4,4
2012	125	103	215	172	397	262	174	182	251	229	150	344	1.448	2.604	1.416	32	2,2
2013	365	445	537	489	580	520	412	281	245	198	123	189	3.348	4.384	3.329	19	0,6
2014	199	179	253	251	305	148	69	92	130	91	97	332	1.404	2.146	1.261	143	10,2
2015	146	222	313	290	290	255	211	203	153	171	359	363	1.727	2.976	1.661	66	3,8
2016	180	209	218	240	214	307	76	82	141	198	314	236	1.444	2.415	1.413	31	2,1
2017	174	119	167	124	188	115	206	187	92	231	109	235	1.093	1.947	1.081	12	1,1
2018	78	65	215	136	125	164	45	42	74	107	113	188	828	1.352	817	11	1,3
2019	75	54	112	35	97	41	25	45	84	28	42	54	439	692	439	-	-
2020	64	130	128	45	80	112	112						671	671	671	-	-



Aylar / Months	10 Yıl Ort / 10 Years Avr.	2020	%
1	1.751	850	-51,4
2	2.334	1.826	-21,8
3	3.666	1.546	-57,8
4	3.191	708	-77,8
5	3.397	1.098	-67,7
6	3.232	1.816	-43,8
7	2.397	2.006	-16,3
TOPLAM / TOTAL	19.966	9.850	-50,7

Yıl / Year	1	2	3	4	5	6	7	8	9	10	11	12	1-7 Toplam / Total	Toplam / Total	1-7 Yerli / Local	1-7 İthal / Import	İthal Oran / Import %
2010	975	1.159	2.250	2.295	2.460	2.615	2.666	3.197	3.226	3.349	3.526	6.865	14.420	34.583	10.779	3.641	25,2
2011	2.867	3.923	5.642	5.087	5.216	4.419	2.614	3.239	4.184	3.806	3.493	6.558	29.768	51.048	20.296	9.472	31,8
2012	2.007	2.814	4.358	3.610	4.332	4.041	3.140	2.834	3.872	2.995	3.493	6.042	24.302	43.538	17.642	6.660	27,4
2013	2.040	2.826	4.169	3.690	4.367	3.947	3.556	2.619	3.425	2.676	4.169	6.330	24.595	43.814	18.709	5.886	23,9
2014	2.081	2.638	3.731	3.808	4.326	4.132	2.863	3.104	4.233	3.169	3.747	7.854	23.579	45.686	18.116	5.463	23,2
2015	2.641	3.890	6.463	4.580	4.262	4.913	3.522	2.667	3.156	2.831	3.830	8.291	30.271	51.046	22.648	7.623	25,2
2016	1.656	2.015	2.984	2.861	3.186	3.126	1.199	2.098	1.820	2.666	3.153	3.794	17.027	30.558	12.555	4.472	26,3
2017	1.317	1.620	2.376	2.243	2.644	2.162	2.430	2.282	2.694	2.687	2.913	5.267	14.792	30.635	11.020	3.772	25,5
2018	1.449	1.759	3.255	2.760	2.241	1.751	1.460	791	887	750	1.202	2.308	14.675	20.613	9.681	4.994	34,0
2019	474	694	1.430	973	931	1.211	515	586	1.076	1.213	1.399	2.385	6.228	12.887	4.229	1.999	32,1
2020	850	1.826	1.546	708	1.098	1.816	2.006						9.850	9.850	6.854	2.996	30,4



	2010	2011	2012	2013	2014	2015	2016	2017	2018	2019	2020
İhracat/Export	466.529	500.772	459.039	510.324	541.857	568.275	644.221	836.175	819.270	761.663	487.875
Üretim/Production	645.020	757.524	688.447	705.371	690.902	809.832	870.818	1.048.131	1.016.213	881.552	653.592
İhracat/Exports (%)	72,3	66,1	66,7	72,3	78,4	70,2	74	79,8	80,6	86,4	74,6

Taşıt Araçları İhracatı (2018 - 2020)
Motor Vehicle Exports (2018 - 2020)

SEKTÖR / SECTOR	2018	2019	1/7-2019	1/7-2020	2020/2019 %
OTOMOBİL / Pass.Car	875.147	828.744	492.644	333.725	-32,3
OTOMOBİL TOPLAM / Pass. Car Total	875.147	828.744	492.644	333.725	-32,3
KAMYON / Truck	14.478	14.824	9.896	5.113	-48,3
KAMYONET / Pick Up	372.954	349.490	213.614	119.841	-43,9
OTOBÜS / Bus	7.708	9.001	5.455	3.782	-30,7
MİNİBÜS / Minibus	47.736	49.283	29.753	17.574	-40,9
MİDİBÜS / Midibus	846	1.244	700	390	-44,3
TİCARİ ARAÇLAR TOPLAM / Commercial Vehicle Total	443.722	423.842	259.418	146.700	-43,5
TAŞIT ARAÇLARI TOPLAM / Motor Vehicles Total	1.318.869	1.252.586	752.062	480.425	-36,1
TRAKTÖR / F.Tractor	15.123	15.844	9.601	7.450	-22,4
TRAKTÖR TOPLAM / F.Tractor Total	15.123	15.844	9.601	7.450	-22,4
GENEL TOPLAM / GRAND TOTAL	1.333.992	1.268.430	761.663	487.875	-35,9

Üretici Bazında İhracat (adet)
Exports by Manufacturer (unit)

Üreticiler / Manufacturers	2018	2019	1-7 / 2019	1-7 / 2020
A.I.O.S.	964	1.433	894	324
FORD OTOSAN	328.502	333.734	200.030	115.943
HATTAT TRAKTÖR	621	637	405	407
HONDA TÜRKİYE	13.699	7.528	3.821	4.903
HYUNDAI ASSAN	190.347	169.803	95.893	74.531
KARSAN	3.419	2.713	1.131	250
M. BENZ TÜRK	16.309	16.324	10.878	5.716
MAN TÜRKİYE	2.425	2.892	1.745	1.613
OTOKAR	901	1.156	778	423
OYAK RENAULT	280.411	295.275	172.636	122.355
TEMSA	645	602	333	88
TOFAŞ	243.796	194.107	123.920	58.516
TOYOTA	237.451	227.019	140.003	95.763
TÜRK TRAKTÖR	14.502	15.207	9.196	7.043
GENEL TOPLAM / Grand Total	1.333.992	1.268.430	761.663	487.875

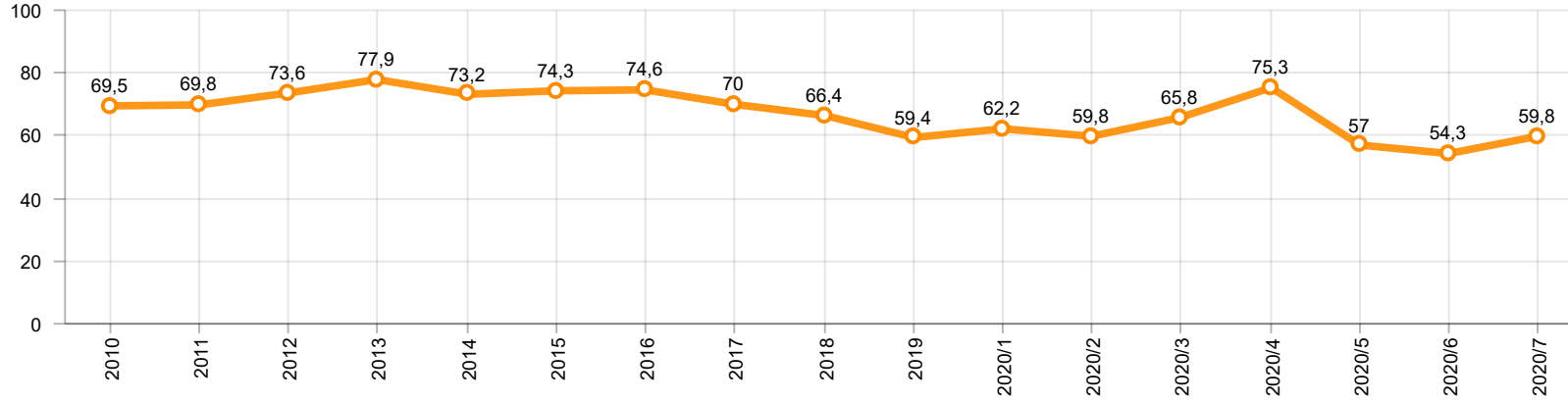
Otomotiv Ana ve Yan Sanayii İhracatı (ABD \$)
CBU and CKD Exports - \$

Sektör / Sector	2018	2019	OCAK - TEMMUZ / January - July 2019	OCAK - TEMMUZ / January - July 2020	2020 / 2019 %
Toplam Yan Sanayi / Total Component Industry	10.878.550.618	10.617.878.409	6.261.848.897,75	4.824.001.317,76	-23,0
İç ve Dış Lastik / Tyres	1.353.862.295	1.479.469.475	862.598.449,1	657.266.258,51	-23,8
Emniyet Camı / Safety Glasses	151.148.111	150.706.975	87.813.522,98	74.448.747,13	-15,2
Motor / Engine	581.983.113	518.051.731	325.458.443,49	254.882.982,26	-21,7
Akümülatör / Batteries	387.879.636	397.638.079	213.768.562,82	174.367.105,4	-18,4
Diğer Aksam ve Parça / Spare Parts&Components	8.403.677.463	8.072.012.149	4.772.209.919,36	3.663.036.224,46	-23,2
Toplam Ana Sanayi / Total Vehicle Industry	21.349.203.156	20.613.852.926	12.279.063.509,95	8.379.178.062,83	-31,8
Otobüs / Bus	1.503.156.428	1.759.421.232	1.055.861.628,35	697.600.099,29	-33,9
Midibüs-Minibüs / Midibus-Minibus	215.450.022	222.922.952	105.751.818,13	122.368.848,65	15,7
Otomobil / P.Cars	12.420.951.066	11.864.837.779	6.896.429.057,41	5.026.076.018,09	-27,1
Kamyon-Kamyonet / Truck-Pick Up&Van	5.375.329.018	4.945.381.202	3.050.080.447,3	1.798.956.180,12	-41,0
Römork ve Yarı Römork / Trailer-Semi Trailer	507.223.886	503.258.885	326.280.436,71	225.696.042,52	-30,8
Çekici / Tractor	904.738.051	839.891.843	577.147.214,13	295.149.278,68	-48,9
Tarım Traktörü / Farm Tractor	422.354.685	478.139.033	267.512.907,92	213.331.595,48	-20,3
Toplam / Total	32.227.753.774	31.231.731.335	18.540.912.407,7	13.203.179.380,59	-28,8

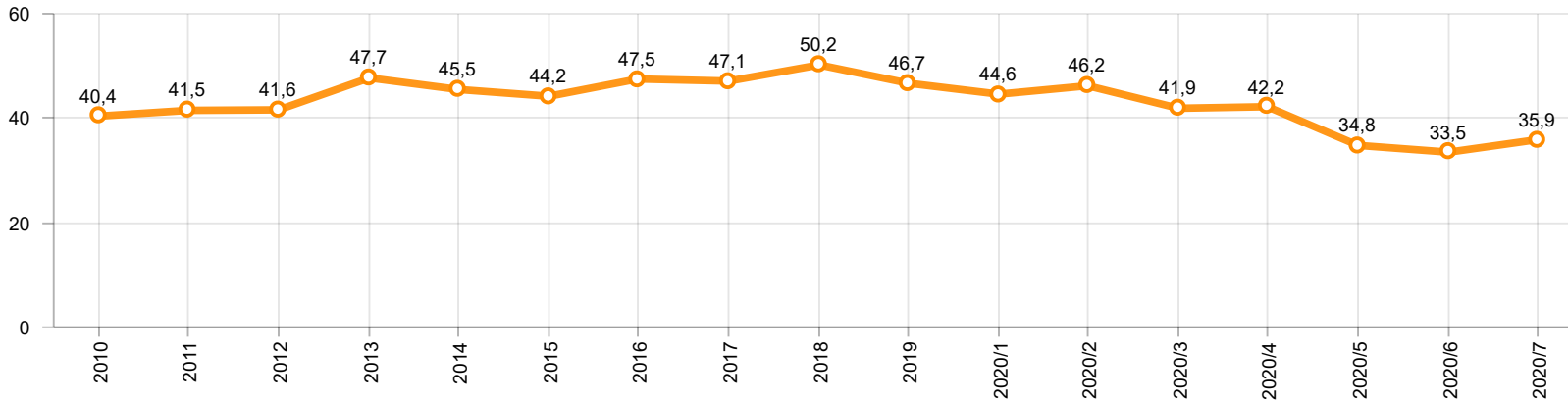
Kaynak: Uludağ İhracatçı Birlikleri . ÜİB tarafından OSD için özel olarak analiz edilen Otomotiv İhracatı kapsamında; ÜİB Türkiye Geneli Otomotiv Endüstrisi sınıflandırmasına kıyasla “Römork ve Yarı Römork” , “Tarım Traktörü” verileri dahil edilmekte; “Kullanılmış Araçlar” ,”İki Tekerlekli Taşıtlar” , “Demiryolu Taşıtları” hariç tutulmaktadır.

Source: Uludağ Exporters Association – Special Analyze for OSD.Compared to Turkish General Automotive Industry classification, this special analyze includes; farms tractors, trailers and semi-trailers, does not include; used vehicles, two-wheeled vehicles and railway vehicles

Otomobil Pazarında İthalatın Payı (%)
Import Share in P.Car Market (%)



Hafif Ticari Araçlar Pazarında İthalatın Payı (%)
Import Share in LCV Market (%)



Araç Tipleri / Vehicle Types	1	2	3	4	5	6	7	8	9	10	11	12	Toplam / Total
OTOMOBİL - Pass.Car	60.438	73.844	57.326	9.327	31.849	48.853	52.088						333.725
KAMYON - H. Truck	202	942	1.138	295	588	935	1.013						5.113
K.KAMYON - L. Truck	-	-	-	-	-	-	-						-
KAMYONET - Pick Up	25.435	24.356	21.081	882	9.461	17.524	21.102						119.841
OTOBÜS - Bus	551	696	593	91	418	829	604						3.782
MİNİBÜS - Minibus	3.309	2.709	3.553	-	2.058	2.605	3.340						17.574
MİDİBÜS - Midibus	31	68	82	18	32	64	95						390
TİCARİ ARAÇLAR TOPLAMI - CV Total	29.528	28.771	26.447	1.286	12.557	21.957	26.154						146.700
TAŞIT ARAÇLARI TOPLAMI - MV Total	89.966	102.615	83.773	10.613	44.406	70.810	78.242						480.425
TRAKTÖR - F.Tractor	1.468	1.181	994	384	680	1.421	1.322						7.450
GENEL TOPLAM - Grand Total	91.434	103.796	84.767	10.997	45.086	72.231	79.564						487.875

Otomobil / P.Car

Firmalar / Firms	1	2	3	4	5	6	7	8	9	10	11	12	Toplam / Total
FORD OTOSAN	583	867	505	-	405	632	639	-	-	-	-	-	3.631
HONDA TÜRKİYE	1.087	1.566	1.009	28	117	755	341	-	-	-	-	-	4.903
HYUNDAI ASSAN	10.700	14.160	13.138	5.123	9.923	12.200	9.287	-	-	-	-	-	74.531
OYAK RENAULT	18.323	24.729	24.536	3.021	14.036	17.391	20.319	-	-	-	-	-	122.355
TOFAŞ	7.835	10.136	5.249	1.155	648	1.978	5.541	-	-	-	-	-	32.542
TOYOTA	21.910	22.386	12.889	-	6.720	15.897	15.961	-	-	-	-	-	95.763
TOPLAM - Total	60.438	73.844	57.326	9.327	31.849	48.853	52.088	-	-	-	-	-	333.725

Kamyonet / Pick-up

Firmalar / Firms	1	2	3	4	5	6	7	8	9	10	11	12	Toplam / Total
A.I.O.S.	-	-	-	-	-	-	-	-	-	-	-	-	-
FORD OTOSAN	20.932	16.627	17.047	125	9.411	14.188	15.344	-	-	-	-	-	93.674
KARSAN	37	-	2	-	8	34	22	-	-	-	-	-	103
OTOKAR	22	-	-	46	-	22	-	-	-	-	-	-	90
TOFAŞ	4.444	7.729	4.032	711	42	3.280	5.736	-	-	-	-	-	25.974
TOPLAM - Total	25.435	24.356	21.081	882	9.461	17.524	21.102	-	-	-	-	-	119.841

Minibüs / Minibus

Firmalar / Firms	1	2	3	4	5	6	7	8	9	10	11	12	Toplam / Total
FORD OTOSAN	3.303	2.708	3.552	-	2.055	2.593	3.337	-	-	-	-	-	17.548
KARSAN	6	1	1	-	3	12	3	-	-	-	-	-	26
TOPLAM - Total	3.309	2.709	3.553	-	2.058	2.605	3.340	-	-	-	-	-	17.574

Kamyon / Truck

Firmalar / Firms	1	2	3	4	5	6	7	8	9	10	11	12	Toplam / Total
A.I.O.S.	-	-	-	-	-	-	-	-	-	-	-	-	-
FORD OTOSAN	145	192	119	92	132	235	175	-	-	-	-	-	1.090
KARSAN	-	-	-	-	-	-	-	-	-	-	-	-	-
M. BENZ TÜRK	57	750	1.019	203	456	700	838	-	-	-	-	-	4.023
OTOKAR	-	-	-	-	-	-	-	-	-	-	-	-	-
TOPLAM - Total	202	942	1.138	295	588	935	1.013	-	-	-	-	-	5.113

Midibüs / Midibus

Firmalar / Firms	1	2	3	4	5	6	7	8	9	10	11	12	Toplam / Total
A.I.O.S.	16	42	76	15	16	43	34	-	-	-	-	-	242
KARSAN	-	-	-	-	7	4	15	-	-	-	-	-	26
OTOKAR	15	20	5	3	8	16	42	-	-	-	-	-	109
TEMSA	-	6	1	-	1	1	4	-	-	-	-	-	13
TOPLAM - Total	31	68	82	18	32	64	95	-	-	-	-	-	390

Otobüs / Bus

Firmalar / Firms	1	2	3	4	5	6	7	8	9	10	11	12	Toplam / Total
A.I.O.S.	6	15	26	-	12	23	-	-	-	-	-	-	82
KARSAN	-	-	23	-	-	30	42	-	-	-	-	-	95
M. BENZ TÜRK	231	380	230	53	153	401	245	-	-	-	-	-	1.693
MAN TÜRKİYE	288	284	269	3	218	270	281	-	-	-	-	-	1.613
OTOKAR	19	15	29	34	16	79	32	-	-	-	-	-	224
TEMSA	7	2	16	1	19	26	4	-	-	-	-	-	75
TOPLAM - Total	551	696	593	91	418	829	604	-	-	-	-	-	3.782

Traktör / F.Tractor

Firmalar / Firms	1	2	3	4	5	6	7	8	9	10	11	12	Toplam / Total
HATTAT TRAKTÖR	120	84	22	38	25	53	65	-	-	-	-	-	407
TÜRK TRAKTÖR	1.348	1.097	972	346	655	1.368	1.257	-	-	-	-	-	7.043
TOPLAM - Total	1.468	1.181	994	384	680	1.421	1.322	-	-	-	-	-	7.450

Firmalar / Firms	2019 Toplam / Total	1	2	3	4	5	6	7	8	9	10	11	12	Toplam / Total
Alfa Romeo	253	2	-	5	-	12	11	8	-	-	-	-	-	38
Aston Martin	18	1	2	1	-	2	1	1	-	-	-	-	-	8
Audi	10.024	461	733	995	613	321	2.211	4.076	-	-	-	-	-	9.410
Bentley	9	-	1	-	3	2	3	-	-	-	-	-	-	9
BMW	9.583	251	815	1.168	373	191	882	1.412	-	-	-	-	-	5.092
Citroen	8.827	584	1.534	1.126	1.413	1.680	2.644	1.698	-	-	-	-	-	10.679
Dacia	17.533	2.261	1.851	1.245	601	787	3.033	4.282	-	-	-	-	-	14.060
DS	269	10	101	38	34	29	26	80	-	-	-	-	-	318
Ferrari	20	1	3	2	-	2	3	2	-	-	-	-	-	13
Fiat	1.043	7	22	79	21	39	154	102	-	-	-	-	-	424
Ford	12.484	206	862	2.042	1.032	604	1.111	3.098	-	-	-	-	-	8.955
Honda	3.108	101	172	160	96	227	152	298	-	-	-	-	-	1.206
Hyundai	15.460	950	1.385	1.261	574	732	1.790	2.465	-	-	-	-	-	9.157
Jaguar	244	-	47	24	6	9	13	7	-	-	-	-	-	106
Jeep	2.123	196	330	504	40	91	367	713	-	-	-	-	-	2.241
Kia	4.987	325	1.140	565	314	565	1.278	1.379	-	-	-	-	-	5.566
Lamborghini	9	-	1	2	1	3	1	3	-	-	-	-	-	11
Land Rover	1.371	8	151	206	237	135	112	134	-	-	-	-	-	983
Lexus	85	7	7	7	7	12	17	22	-	-	-	-	-	79
Maserati	45	-	2	-	1	4	5	6	-	-	-	-	-	18
Mazda	417	11	7	10	6	15	12	20	-	-	-	-	-	81
Mercedes-Benz	9.862	504	1.239	1.170	944	862	1.355	1.257	-	-	-	-	-	7.331
Mini	1.254	28	82	168	60	26	101	37	-	-	-	-	-	502
Mitsubishi	747	29	21	16	16	52	360	273	-	-	-	-	-	767
Nissan	11.980	757	275	548	188	310	246	770	-	-	-	-	-	3.094
Opel	16.689	554	1.768	2.726	2.044	1.770	2.913	4.233	-	-	-	-	-	16.008
Peugeot	23.057	1.338	2.440	2.540	3.792	2.473	2.661	2.929	-	-	-	-	-	18.173
Porsche	361	11	36	19	17	14	24	42	-	-	-	-	-	163
Renault	9.410	185	727	968	393	451	709	1.229	-	-	-	-	-	4.662
Seat	5.914	578	1.199	1.036	532	442	694	1.567	-	-	-	-	-	6.048
Skoda	15.369	884	1.570	1.303	313	374	3.205	2.599	-	-	-	-	-	10.248
Smart	44	12	16	8	3	2	4	2	-	-	-	-	-	47
Ssangyong	111	23	33	1	5	-	139	1	-	-	-	-	-	202
Subaru	662	17	59	84	22	43	87	83	-	-	-	-	-	395
Suzuki	2.381	22	124	173	181	134	535	275	-	-	-	-	-	1.444
Toyota	1.350	30	90	479	70	117	209	280	-	-	-	-	-	1.275
Volkswagen	38.820	3.292	3.469	5.164	2.108	1.408	3.444	4.589	-	-	-	-	-	23.474
Volvo	4.155	44	256	397	383	357	502	1.545	-	-	-	-	-	3.484
GENEL TOPLAM - Grand Total	230.078	13.690	22.570	26.240	16.443	14.297	31.014	41.517	-	-	-	-	-	165.771

Firmalar / Firms	2019 Toplam / Total	1	2	3	4	5	6	7	8	9	10	11	12	Toplam / Total
Citroen	3.206	250	341	434	133	44	182	411	-	-	-	-	-	1.795
Dacia	2.473	271	352	474	120	272	332	125	-	-	-	-	-	1.946
Fiat	1.767	176	350	252	106	131	639	795	-	-	-	-	-	2.449
Ford	1.198	50	71	63	161	241	107	72	-	-	-	-	-	765
Hyundai	1.114	55	96	54	29	59	42	-	-	-	-	-	-	335
Isuzu	75	2	3	1	1	13	24	4	-	-	-	-	-	48
Iveco	1.326	64	83	104	62	79	164	129	-	-	-	-	-	685
Kia	1.355	5	4	144	45	118	175	83	-	-	-	-	-	574
Mercedes-Benz	5.074	219	480	372	213	263	520	433	-	-	-	-	-	2.500
Mitsubishi	1.880	99	146	160	185	174	379	1.084	-	-	-	-	-	2.227
Nissan	1.087	66	92	59	22	47	56	2	-	-	-	-	-	344
Opel	1.370	51	33	298	99	49	231	336	-	-	-	-	-	1.097
Peugeot	5.804	418	555	495	168	260	317	431	-	-	-	-	-	2.644
Renault	4.309	171	228	117	90	219	314	271	-	-	-	-	-	1.410
Ssangyong	260	19	21	36	19	18	61	39	-	-	-	-	-	213
Toyota	939	25	34	70	23	96	103	90	-	-	-	-	-	441
Volkswagen	9.676	403	1.456	1.103	479	412	1.018	2.151	-	-	-	-	-	7.022
GENEL TOPLAM - Grand Total	42.913	2.344	4.345	4.236	1.955	2.495	4.664	6.456	-	-	-	-	-	26.495