



OTOMOTİV SANAYİİ DERNEĐİ
AUTOMOTIVE MANUFACTURERS ASSOCIATION

OTOMOTİV SEKTÖRÜ AYLIK DEĐERLENDİRME RAPORU EYLÜL 2021

AUTOMOTIVE INDUSTRY MONTHLY REPORT
September 2021

OSD "OICA" Üyesidir © O I C A OSD is a Member of "OICA"

	9 - 2020	9 - 2021	%	1 - 9 / 2020	1 - 9 / 2021	%	10/2019 - 9/2020	10/2020 - 9/2021	%
Otomobil Üretimi/P.Cars Production	90.447	59.335	-34,4	575.761	571.108	-0,8	857.822	850.390	-0,9
Toplam Üretim/Total Production	142.129	107.029	-24,7	854.230	921.619	7,9	1.258.095	1.365.267	8,5
Otomobil Pazarı/P.Cars Market	71.296	43.408	-39,1	388.690	434.800	11,9	547.318	656.219	19,9
Toplam Pazar/Total Market	93.406	59.734	-36,1	508.282	582.083	14,5	711.030	869.951	22,4
Otomobil İthalatı/P.Cars Import	38.689	27.283	-29,5	232.323	260.653	12,2	332.678	388.780	16,9
Toplam İthalat/Total Import	45.570	33.975	-25,4	275.649	327.110	18,7	394.914	478.452	21,2
Otomobil İhracatı/P.Cars Export	56.927	35.733	-37,2	417.045	401.437	-3,7	651.703	581.008	-10,9
Toplam İhracat/Total Export	92.832	76.249	-17,9	616.125	671.674	9,0	954.939	972.087	1,8
Otomobil İhracatı(\$)/P.Cars Export (\$)	865.577.435,17	618.925.646,09	-28,5	6.273.222.884	6.620.539.848	5,5	9.721.832.045	9.659.405.298	-0,6
Toplam İhracat(\$)/Total Export (\$)*	2.645.358.780,55	2.511.187.882,58	-5,1	17.412.336.012	21.672.210.161	24,5	25.554.691.426	30.202.138.138	18,2

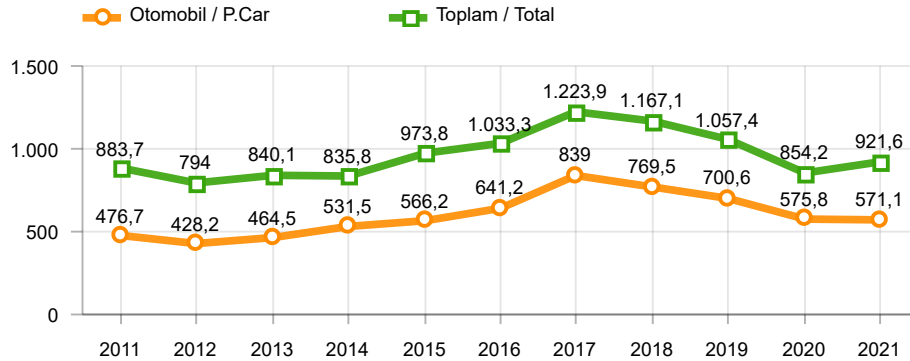
Parametreler/Parameters	9 - 2020	9 - 2021	%	1 - 9 / 2020	1 - 9 / 2021	%	10/2019 - 9/2020	10/2020 - 9/2021	%
ÜFE / PPI	2,7	1,6	-	13,4	30,5	-	7,7	33,8	-
TÜFE / CPI	1,0	1,3	-	8,3	13,0	-	11,5	16,4	-
Sanayi Endeksi / Industry Index	2,8	1,6	-	14,6	29,3	-	7,5	35,9	-
Dolar \$ ** (1 birim)	7,5	8,5	13,4	6,7	8,1	20,2	6,5	8,0	23,8
Euro € ** (1 birim)	8,9	10,0	13,2	7,6	9,7	27,6	7,3	9,6	31,9
Japon Yeni ¥ ** (100 birim)	7,1	7,7	8,7	6,2	7,4	18,8	6,0	7,4	23,9

*Toplam Sanayi / Total Industry Including Components

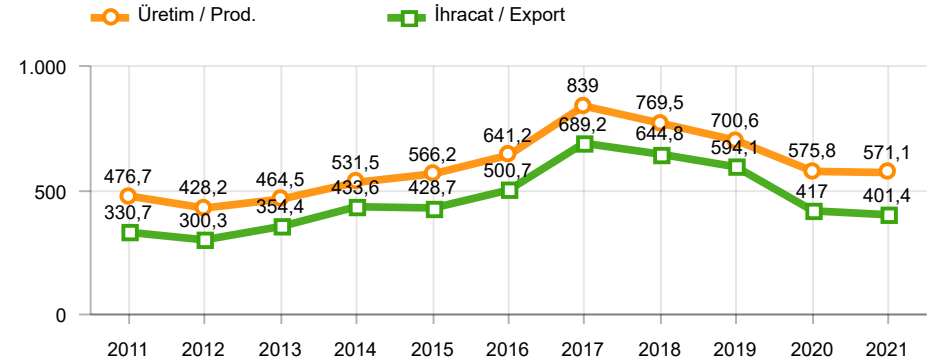
** Ortalama Değerler / Average Values

Araç Tipleri / Types	9 / 2020	9 / 2021	9 % Değişim	1-9 / 2020	1-9 / 2021	1-9 % Değişim
OTOMOBİL / Pass.Car	90.447	59.335	-34,4	575.761	571.108	-0,8
OTOMOBİL Toplam / Pass.Car Total	90.447	59.335	-34,4	575.761	571.108	-0,8
B.KAMYON / H. Truck	2.411	1.986	-17,6	13.452	21.797	62,0
K.KAMYON / L. Truck	235	258	9,8	1.123	2.897	158,0
KAMYONET / Pick Up	42.481	39.591	-6,8	221.183	286.367	29,5
OTOBÜS / Bus	818	345	-57,8	5.832	3.912	-32,9
MİNİBÜS / Minibus	5.519	5.229	-5,3	35.376	33.981	-3,9
MİDİBÜS / Midibus	218	285	30,7	1.503	1.557	3,6
TİCARİ ARAÇLAR Toplam / Commercial Vehicles Total	51.682	47.694	-7,7	278.469	350.511	25,9
TAŞIT ARAÇLARI Toplam / Motor Vehicles Total	142.129	107.029	-24,7	854.230	921.619	7,9
TRAKTÖR / F.Tractor	4.133	4.919	19,0	23.936	41.210	72,2
TRAKTÖR Toplam / F.Tractor Total	4.133	4.919	19,0	23.936	41.210	72,2
GENEL TOPLAM / Grand Total	146.262	111.948	-23,5	878.166	962.829	9,6

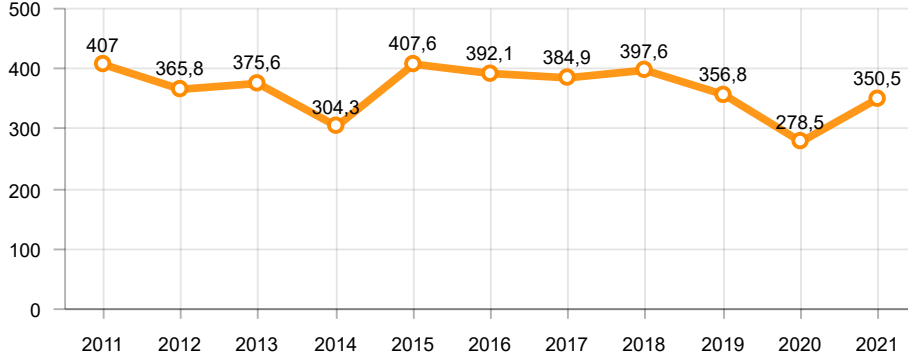
Toplam Üretim ve Otomobil Üretimi (x1000)(OCAK - EYLÜL)
Total & P.Cars Production (x1000)(January - September)



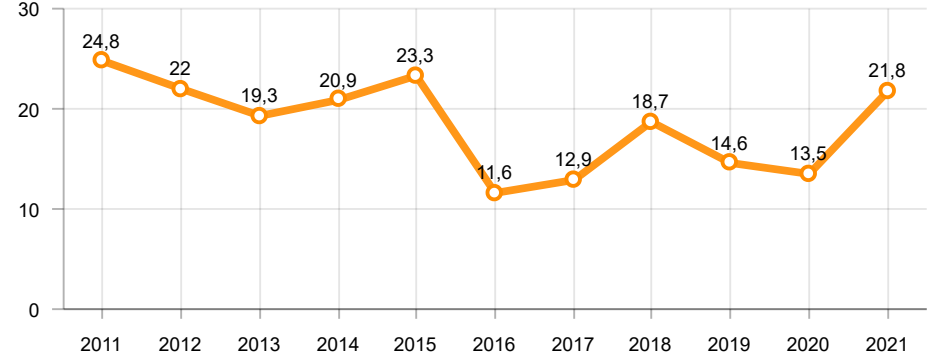
Otomobil Üretimi ve İhracat (x1000)(OCAK - EYLÜL)
P.Cars Production & Exports (x1000)(January - September)



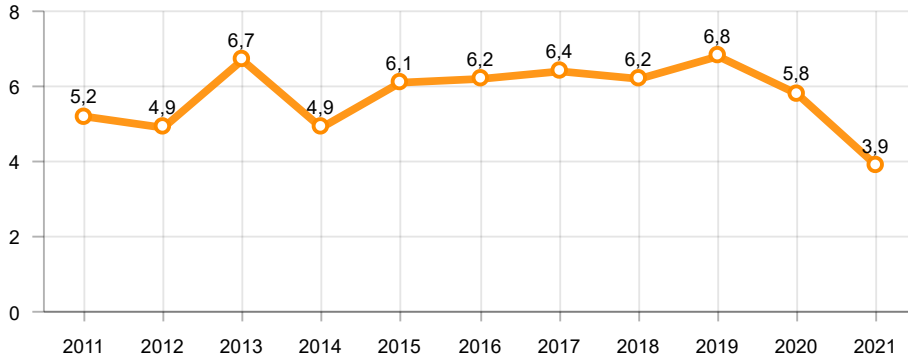
Ticari Araç Üretimi (x1000)(OCAK - EYLÜL)
Commercial Vehicle Production (x1000)(January - September)



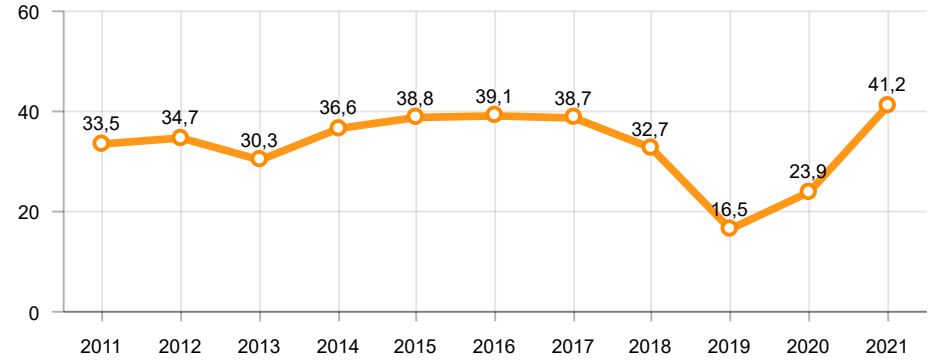
Büyük Kamyon Üretimi (x1000)(OCAK - EYLÜL)
Heavy Truck Production (x1000)(January - September)

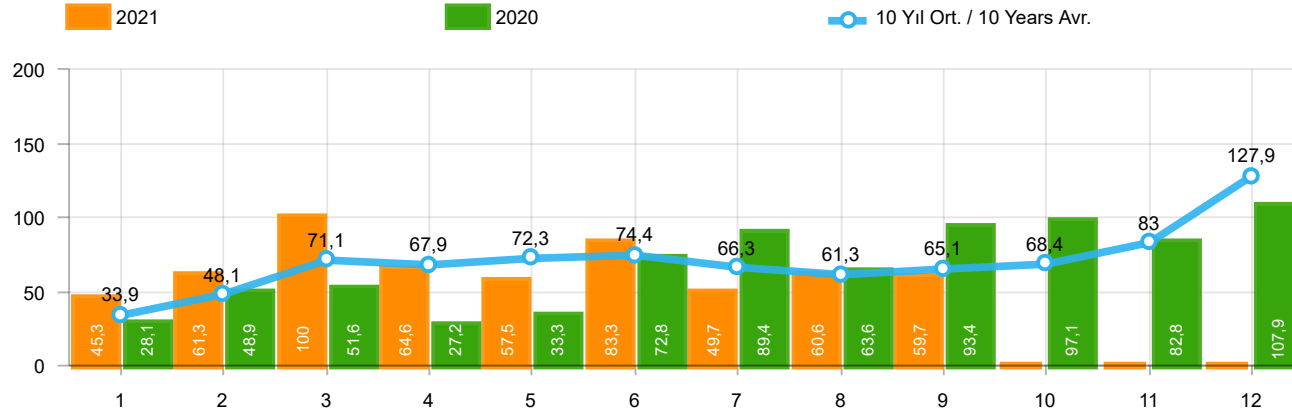


Otobüs Üretimi (x1000)(OCAK - EYLÜL)
Bus Production (x1000)(January - September)



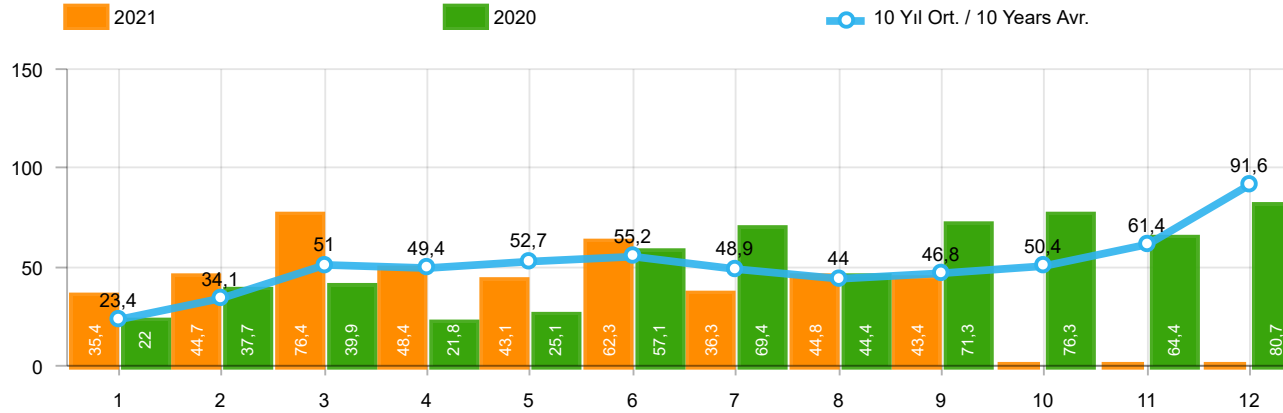
Traktör Üretimi (x1000)(OCAK - EYLÜL)
F. Tractor Production (x1000)(January - September)





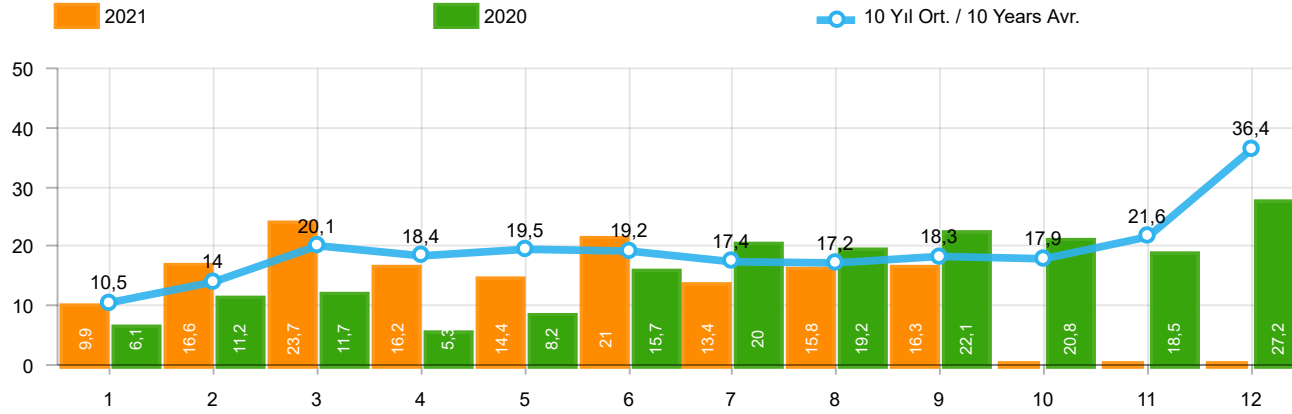
Aylar / Months	10 Yıl Ort / 10 Years Avr.	2021	%
1	33.938	45.308	33,5
2	48.144	61.325	27,4
3	71.122	100.046	40,7
4	67.887	64.551	-4,9
5	72.255	57.510	-20,4
6	74.447	83.304	11,9
7	66.289	49.732	-25,0
8	61.284	60.573	-1,2
9	65.099	59.734	-8,2
TOPLAM/TOTAL	560.468	582.083	3,9

Yıl / Year	1	2	3	4	5	6	7	8	9	10	11	12	1-9 Toplam / Total	Toplam / Total	1-9 Yerli / Local	1-9 İthal / Import	İthal Oran / Import %
2011	47.759	62.586	84.045	82.782	85.862	85.992	65.658	61.645	64.313	73.227	67.150	134.468	640.642	915.487	261.328	379.314	59,2
2012	31.552	44.138	69.242	66.559	75.195	75.108	65.444	60.982	73.501	62.933	75.203	121.442	561.721	821.299	212.373	349.348	62,2
2013	37.563	51.133	72.943	77.265	85.835	78.043	75.152	67.662	71.388	60.690	83.470	136.048	616.984	897.192	192.121	424.863	68,9
2014	34.751	37.659	51.312	57.113	62.447	64.295	62.770	63.303	70.764	69.742	84.368	154.843	504.414	813.367	171.815	332.599	65,9
2015	37.256	59.221	89.765	96.182	85.804	91.071	87.358	85.244	67.181	67.086	88.431	164.464	699.082	1.019.063	242.089	456.993	65,4
2016	34.369	54.840	85.932	87.748	97.090	94.666	59.732	73.654	69.413	85.666	125.462	145.706	657.444	1.014.278	211.443	446.001	67,8
2017	36.640	48.585	76.178	78.231	88.066	85.820	84.727	74.818	74.046	94.439	103.772	141.507	647.111	986.829	235.998	411.113	63,5
2018	36.525	48.768	79.600	73.886	74.996	52.788	54.194	35.137	23.915	22.321	59.406	80.014	479.809	641.550	182.876	296.933	61,9
2019	14.847	25.569	50.651	31.944	33.947	43.899	18.442	26.832	43.068	50.288	59.575	92.885	289.199	491.947	131.395	157.804	54,6
2020	28.123	48.948	51.554	27.165	33.308	72.789	89.419	63.570	93.406	97.125	82.824	107.919	508.282	796.150	232.633	275.649	54,2
2021	45.308	61.325	100.046	64.551	57.510	83.304	49.732	60.573	59.734				582.083	582.083	254.973	327.110	56,2



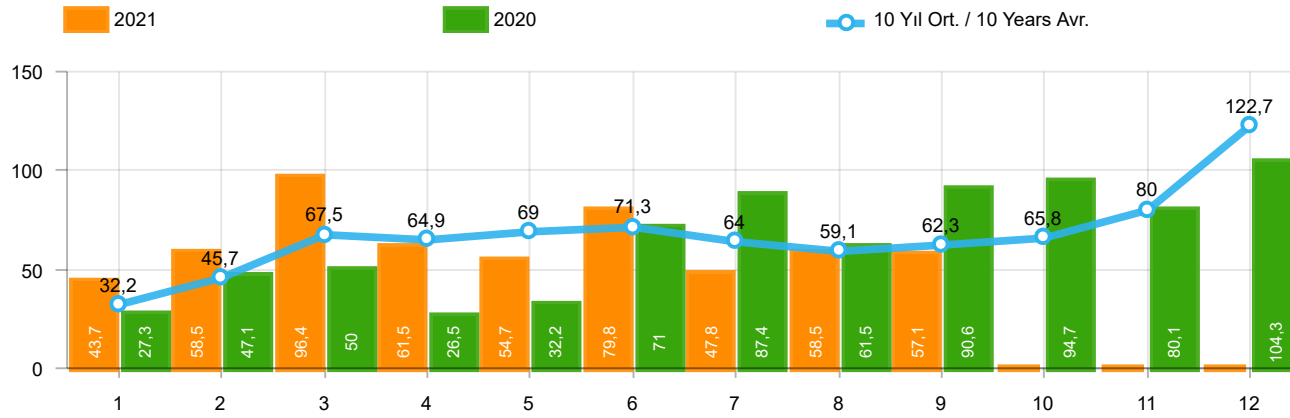
Aylar / Months	10 Yıl Ort / 10 Years Avr.	2021	%
1	23.430	35.358	50,9
2	34.107	44.749	31,2
3	51.047	76.357	49,6
4	49.442	48.375	-2,2
5	52.746	43.138	-18,2
6	55.249	62.348	12,8
7	48.938	36.311	-25,8
8	44.037	44.756	1,6
9	46.756	43.408	-7,2
TOPLAM / TOTAL	405.752	434.800	7,2

Yıl / Year	1	2	3	4	5	6	7	8	9	10	11	12	1-9 Toplam / Total	Toplam / Total	1-9 Yerli / Local	1-9 İthal / Import	İthal Oran / Import %
2011	29.868	39.004	54.023	53.835	56.302	56.714	43.518	38.875	39.964	47.508	44.951	88.957	412.103	593.519	128.497	283.606	68,8
2012	21.077	29.189	47.270	45.645	50.460	50.849	44.531	41.236	49.360	43.440	52.297	80.926	379.617	556.280	103.676	275.941	72,7
2013	25.835	36.814	51.785	56.999	62.383	58.290	55.712	51.611	52.925	46.985	64.117	101.199	452.354	664.655	99.279	353.075	78,1
2014	24.368	27.167	37.812	42.769	46.379	47.278	46.602	45.131	49.262	50.814	59.695	110.054	366.768	587.331	94.199	272.569	74,3
2015	24.498	40.817	61.676	70.211	62.878	67.766	64.218	61.753	47.088	47.954	62.397	114.340	500.905	725.596	126.854	374.051	74,7
2016	23.358	40.588	63.975	65.618	73.832	71.111	45.566	53.977	51.340	63.746	95.783	108.044	489.365	756.938	118.694	370.671	75,7
2017	25.689	34.658	55.616	57.998	65.799	66.164	62.384	54.890	53.423	70.488	75.956	99.694	476.621	722.759	144.793	331.828	69,6
2018	26.611	35.901	59.798	55.108	57.227	41.225	42.024	26.976	17.595	16.809	46.204	60.843	362.465	486.321	121.022	241.443	66,6
2019	10.979	19.205	38.628	24.416	27.126	36.024	15.398	21.544	35.308	39.996	47.803	70.829	228.628	387.256	98.905	129.723	56,7
2020	22.016	37.727	39.887	21.825	25.073	57.067	69.427	44.372	71.296	76.341	64.357	80.721	388.690	610.109	156.367	232.323	59,8
2021	35.358	44.749	76.357	48.375	43.138	62.348	36.311	44.756	43.408				434.800	434.800	174.147	260.653	59,9



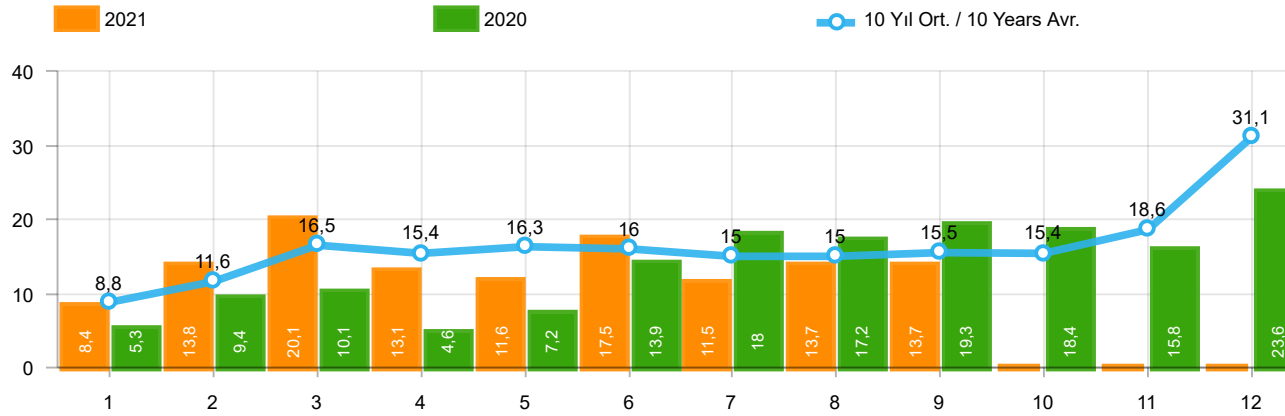
Aylar / Months	10 Yıl Ort / 10 Years Avr.	2021	%
1	10.509	9.950	-5,3
2	14.038	16.576	18,1
3	20.075	23.689	18,0
4	18.445	16.176	-12,3
5	19.509	14.372	-26,3
6	19.198	20.956	9,2
7	17.352	13.421	-22,7
8	17.248	15.817	-8,3
9	18.343	16.326	-11,0
TOPLAM / TOTAL	154.717	147.283	-4,8

Yıl / Year	1	2	3	4	5	6	7	8	9	10	11	12	1-9 Toplam / Total	Toplam / Total	1-9 Yerli / Local	1-9 İthal / Import	İthal Oran / Import %
2011	17.891	23.582	30.022	28.947	29.560	29.278	22.140	22.770	24.349	25.719	22.199	45.511	228.539	321.968	132.831	95.708	41,9
2012	10.475	14.949	21.972	20.914	24.735	24.259	20.913	19.746	24.141	19.493	22.906	40.516	182.104	265.019	108.697	73.407	40,3
2013	11.728	14.319	21.158	20.266	23.452	19.753	19.440	16.051	18.463	13.705	19.353	34.849	164.630	232.537	92.842	71.788	43,6
2014	10.383	10.492	13.500	14.344	16.068	17.017	16.168	18.172	21.502	18.928	24.673	44.789	137.646	226.036	77.616	60.030	43,6
2015	12.758	18.404	28.089	25.971	22.926	23.305	23.140	23.491	20.093	19.132	26.034	50.124	198.177	293.467	115.235	82.942	41,9
2016	11.011	14.252	21.957	22.130	23.258	23.555	14.166	19.677	18.073	21.920	29.679	37.662	168.079	257.340	92.749	75.330	44,8
2017	10.951	13.927	20.562	20.233	22.267	19.656	22.343	19.928	20.623	23.951	27.816	41.813	170.490	264.070	91.205	79.285	46,5
2018	9.914	12.867	19.802	18.778	17.769	11.563	12.170	8.161	6.320	5.512	13.202	19.171	117.344	155.229	61.854	55.490	47,3
2019	3.868	6.364	12.023	7.528	6.821	7.875	3.044	5.288	7.760	10.292	11.772	22.056	60.571	104.691	32.490	28.081	46,4
2020	6.107	11.221	11.667	5.340	8.235	15.722	19.992	19.198	22.110	20.784	18.467	27.198	119.592	186.041	76.266	43.326	36,2
2021	9.950	16.576	23.689	16.176	14.372	20.956	13.421	15.817	16.326				147.283	147.283	80.826	66.457	45,1



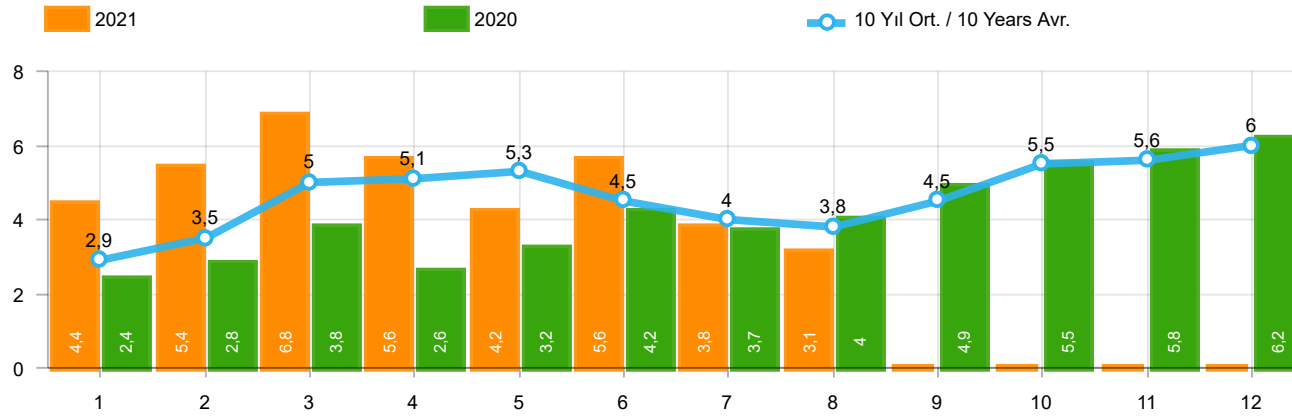
Aylar / Months	10 Yıl Ort. / 10 Years Avr.	2021	%
1	32.200	43.728	35,8
2	45.744	58.504	27,9
3	67.527	96.428	42,8
4	64.856	61.488	-5,2
5	68.997	54.734	-20,7
6	71.295	79.819	12,0
7	63.958	47.849	-25,2
8	59.059	58.454	-1,0
9	62.286	57.141	-8,3
TOPLAM / TOTAL	535.922	558.145	4,2

Yıl / Year	1	2	3	4	5	6	7	8	9	10	11	12	1-9 Toplam / Total	Toplam / Total	1-9 Yerli / Local	1-9 İthal / Import	İthal Oran / Import %
2011	44.892	58.663	78.403	77.695	80.646	81.573	63.044	58.406	60.129	69.421	63.657	127.910	603.451	864.439	235.848	367.603	60,9
2012	29.545	41.324	64.884	62.949	70.863	71.067	62.304	58.148	69.629	59.938	71.710	115.400	530.713	777.761	189.886	340.827	64,2
2013	35.523	48.307	68.774	73.575	81.468	74.096	71.596	65.043	67.963	58.014	79.301	129.718	586.345	853.378	168.578	417.767	71,2
2014	32.670	35.021	47.581	53.305	58.121	60.163	59.907	60.199	66.531	66.573	80.621	146.989	473.498	767.681	148.365	325.133	68,7
2015	34.615	55.331	83.302	91.602	81.542	86.158	83.836	82.577	64.025	64.255	84.601	156.173	662.988	968.017	215.385	447.603	67,5
2016	32.713	52.825	82.948	84.887	93.904	91.540	58.533	71.556	67.593	83.000	122.309	141.912	636.499	983.720	195.860	440.639	69,2
2017	35.323	46.965	73.802	75.988	85.422	83.658	82.297	72.536	71.352	91.752	100.859	136.240	627.343	956.194	221.520	405.823	64,7
2018	35.076	47.009	76.345	71.126	72.755	51.037	52.734	34.346	23.028	21.571	58.204	77.706	463.456	620.937	172.004	291.452	62,9
2019	14.373	24.875	49.221	30.971	33.016	42.688	17.927	26.246	41.992	49.075	58.176	90.500	281.309	479.060	126.010	155.299	55,2
2020	27.273	47.122	50.008	26.457	32.235	70.973	87.401	61.533	90.619	94.733	80.141	104.293	493.621	772.788	222.514	271.107	54,9
2021	43.728	58.504	96.428	61.488	54.734	79.819	47.849	58.454	57.141				558.145	558.145	240.197	317.948	57,0



Aylar / Months	10 Yıl Ort / 10 Years Avr.	2021	%
1	8.770	8.370	-4,6
2	11.637	13.755	18,2
3	16.480	20.071	21,8
4	15.413	13.113	-14,9
5	16.251	11.596	-28,6
6	16.047	17.471	8,9
7	15.020	11.538	-23,2
8	15.023	13.698	-8,8
9	15.530	13.733	-11,6
TOPLAM / TOTAL	130.171	123.345	-5,2

Yıl / Year	1	2	3	4	5	6	7	8	9	10	11	12	1-9 Toplam / Total	Toplam / Total	1-9 Yerli / Local	1-9 İthal / Import	İthal Oran / Import %
2011	15.024	19.659	24.380	23.860	24.344	24.859	19.526	19.531	20.165	21.913	18.706	38.953	191.348	270.920	107.351	83.997	43,9
2012	8.468	12.135	17.614	17.304	20.403	20.218	17.773	16.912	20.269	16.498	19.413	34.474	151.096	221.481	86.210	64.886	42,9
2013	9.688	11.493	16.989	16.576	19.085	15.806	15.884	13.432	15.038	11.029	15.184	28.519	133.991	188.723	69.299	64.692	48,3
2014	8.302	7.854	9.769	10.536	11.742	12.885	13.305	15.068	17.269	15.759	20.926	36.935	106.730	180.350	54.166	52.564	49,2
2015	10.117	14.514	21.626	21.391	18.664	18.392	19.618	20.824	16.937	16.301	22.204	41.833	162.083	242.421	88.531	73.552	45,4
2016	9.355	12.237	18.973	19.269	20.072	20.429	12.967	17.579	16.253	19.254	26.526	33.868	147.134	226.782	77.166	69.968	47,6
2017	9.634	12.307	18.186	17.990	19.623	17.494	19.913	17.646	17.929	21.264	24.903	36.546	150.722	233.435	76.727	73.995	49,1
2018	8.465	11.108	16.547	16.018	15.528	9.812	10.710	7.370	5.433	4.762	12.000	16.863	100.991	134.616	50.982	50.009	49,5
2019	3.394	5.670	10.593	6.555	5.890	6.664	2.529	4.702	6.684	9.079	10.373	19.671	52.681	91.804	27.105	25.576	48,5
2020	5.257	9.395	10.121	4.632	7.162	13.906	17.974	17.161	19.323	18.392	15.784	23.572	104.931	162.679	66.147	38.784	37,0
2021	8.370	13.755	20.071	13.113	11.596	17.471	11.538	13.698	13.733				123.345	123.345	66.050	57.295	46,5



Aylar / Months	10 Yıl Ort. / 10 Years Avr.	2021	%
1	2.860	4.411	54,2
2	3.521	5.395	53,2
3	4.990	6.845	37,2
4	5.108	5.581	9,3
5	5.277	4.200	-20,4
6	4.457	5.571	25,0
7	4.011	3.846	-4,1
8	3.825	3.093	-19,1
TOPLAM / TOTAL	34.049	38.942	14,4

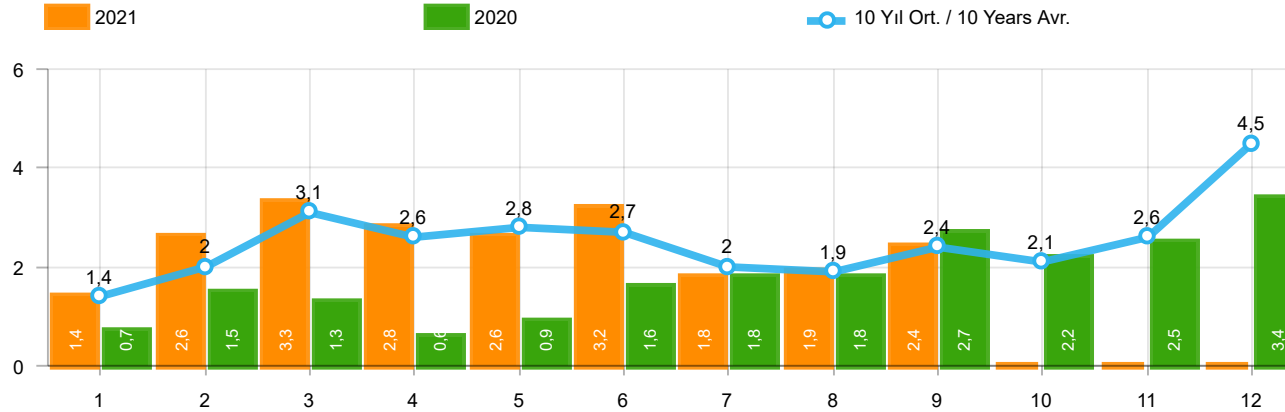
Yıl / Year	1	2	3	4	5	6	7	8	9	10	11	12	1-8 Toplam / Total	Toplam / Total
2011	2.975	5.242	5.927	5.358	6.016	6.335	4.534	4.051	4.140	5.828	4.943	4.992	40.438	60.341
2012	2.362	1.983	4.348	6.579	6.273	4.569	3.837	3.158	3.618	4.027	4.807	4.757	33.109	50.318
2013	2.161	2.432	4.005	4.585	5.616	3.136	4.574	3.408	4.935	4.762	5.781	6.891	29.917	52.286
2014	2.169	3.512	4.476	4.905	5.094	5.028	4.233	4.920	5.619	5.743	6.250	7.409	34.337	59.358
2015	3.124	3.984	5.460	6.383	6.078	5.748	4.677	5.044	4.765	7.049	6.898	7.564	40.498	66.774
2016	3.739	4.731	7.067	6.546	6.575	5.543	3.833	5.134	4.945	7.372	7.090	7.603	43.168	70.178
2017	3.974	4.964	6.773	6.780	7.057	5.356	5.003	4.396	6.064	7.734	7.457	7.351	44.303	72.909
2018	4.362	4.179	5.925	5.216	4.584	3.146	3.654	2.587	3.541	3.698	3.578	3.886	33.653	48.356
2019	1.311	1.401	2.143	2.126	2.229	1.538	2.039	1.579	2.284	2.828	3.037	3.782	14.366	26.297
2020	2.425	2.778	3.771	2.606	3.244	4.173	3.727	3.974	4.928	5.466	5.831	6.221	26.698	49.144
2021	4.411	5.395	6.845	5.581	4.200	5.571	3.846	3.093	-	-	-	-	38.942	38.942

Kaynak: TÜİK trafik kayıtları.

Rakamlar, son iki model yılına ait traktör tescillerinden oluşmaktadır.

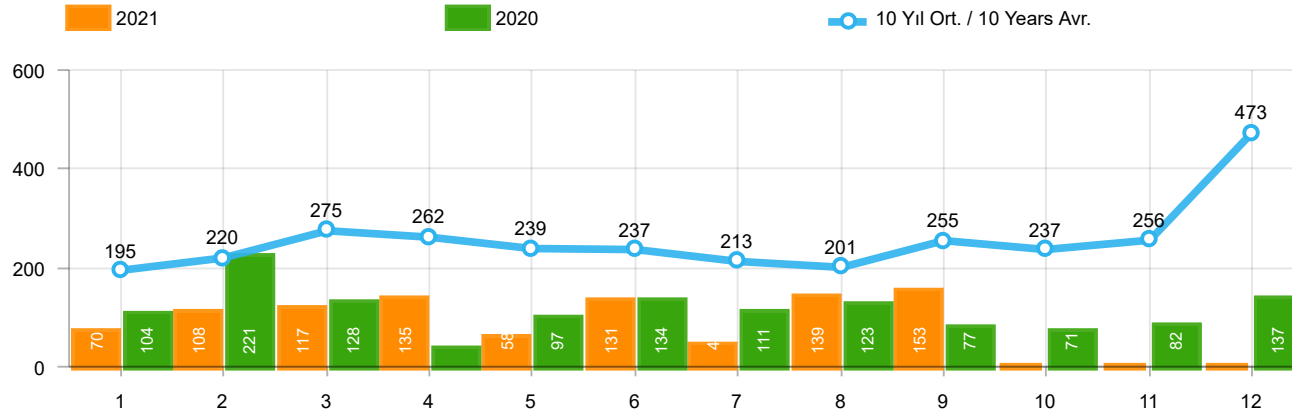
Source: Turkish Statistical Institute – Traffic registrations

Data represents the last two model year's farm tractors registration figures



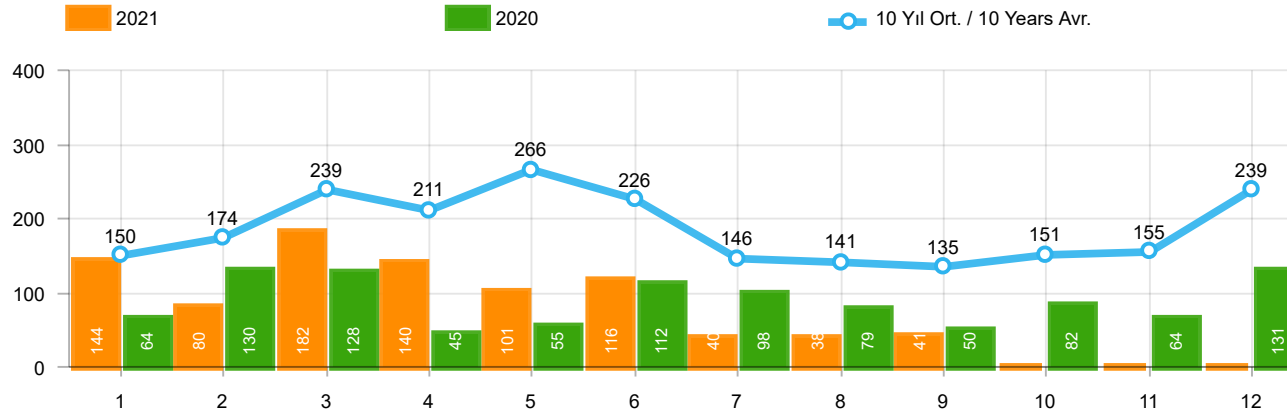
Aylar / Months	10 Yıl Ort / 10 Years Avr.	2021	%
1	1.393	1.366	-2,0
2	2.007	2.633	31,2
3	3.082	3.319	7,7
4	2.560	2.788	8,9
5	2.753	2.617	-4,9
6	2.689	3.238	20,4
7	1.973	1.799	-8,8
8	1.884	1.942	3,1
9	2.424	2.399	-1,0
TOPLAM / TOTAL	20.763	22.101	6,4

Yıl / Year	1	2	3	4	5	6	7	8	9	10	11	12	1-9 Toplam / Total	Toplam / Total	1-9 Yerli / Local	1-9 İthal / Import	İthal Oran / Import %
2011	2.651	3.544	5.142	4.503	4.563	3.852	2.261	2.745	3.784	3.400	3.149	5.712	33.045	45.306	21.418	11.627	35,2
2012	1.703	2.454	3.866	3.209	3.678	3.540	2.750	2.403	3.296	2.497	3.154	5.300	26.899	37.850	18.410	8.489	31,6
2013	1.484	2.113	3.343	2.925	3.504	3.186	2.777	2.103	2.875	2.086	3.631	5.444	24.310	35.471	17.241	7.069	29,1
2014	1.522	2.065	3.094	3.224	3.727	3.726	2.578	2.783	3.708	2.858	3.384	6.869	26.427	39.538	19.114	7.313	27,7
2015	2.215	3.346	5.699	3.729	3.600	4.253	2.922	2.211	2.687	2.266	3.146	7.307	30.662	43.381	21.341	9.321	30,4
2016	1.167	1.648	2.515	2.319	2.711	2.623	984	1.796	1.438	2.238	2.485	3.127	17.201	25.051	11.870	5.331	31,0
2017	931	1.290	1.982	1.888	2.184	1.891	1.974	1.860	2.284	2.188	2.487	4.438	16.284	25.397	11.008	5.276	32,4
2018	1.237	1.552	2.630	2.328	1.909	1.272	1.235	603	653	488	905	1.695	13.419	16.507	7.949	5.470	40,8
2019	342	579	1.255	842	728	981	435	497	854	1.047	1.100	2.087	6.513	10.747	4.008	2.505	38,5
2020	682	1.475	1.290	628	921	1.570	1.809	1.835	2.660	2.239	2.537	3.358	12.870	21.004	8.328	4.542	35,3
2021	1.366	2.633	3.319	2.788	2.617	3.238	1.799	1.942	2.399				22.101	22.101	12.939	9.162	41,5



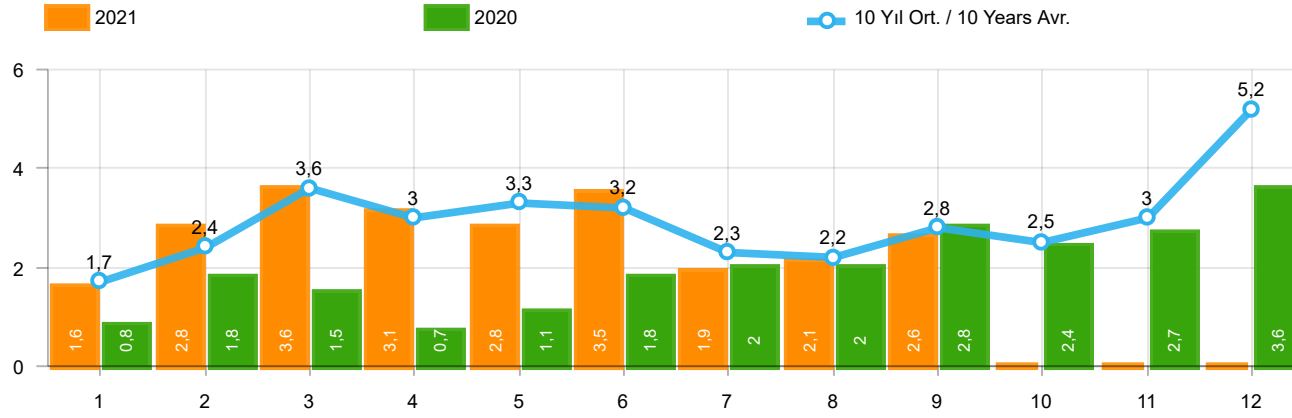
Aylar / Months	10 Yıl Ort / 10 Years Avr.	2021	%
1	195	70	-64,1
2	220	108	-50,9
3	275	117	-57,4
4	262	135	-48,5
5	239	58	-75,7
6	237	131	-44,6
7	213	44	-79,3
8	201	139	-31,0
9	255	153	-39,9
TOPLAM / TOTAL	2.096	955	-54,4

Yıl / Year	1	2	3	4	5	6	7	8	9	10	11	12	1-9 Toplam / Total	Toplam / Total
2011	124	167	267	260	241	233	205	280	270	230	168	525	2.047	2.970
2012	179	257	277	229	257	239	216	249	325	269	189	398	2.228	3.084
2013	191	268	289	276	283	241	367	235	305	392	415	697	2.455	3.959
2014	360	394	384	333	294	258	216	229	395	220	266	653	2.863	4.002
2015	280	322	451	561	372	405	389	253	316	394	325	621	3.349	4.689
2016	309	158	251	302	261	196	139	220	241	230	354	431	2.077	3.092
2017	212	211	227	231	272	156	250	235	318	268	317	594	2.112	3.291
2018	134	142	410	296	207	315	180	146	160	155	184	425	1.990	2.754
2019	57	61	63	96	106	189	55	44	138	138	257	244	809	1.448
2020	104	221	128	35	97	134	111	123	77	71	82	137	1.030	1.320
2021	70	108	117	135	58	131	44	139	153				955	955



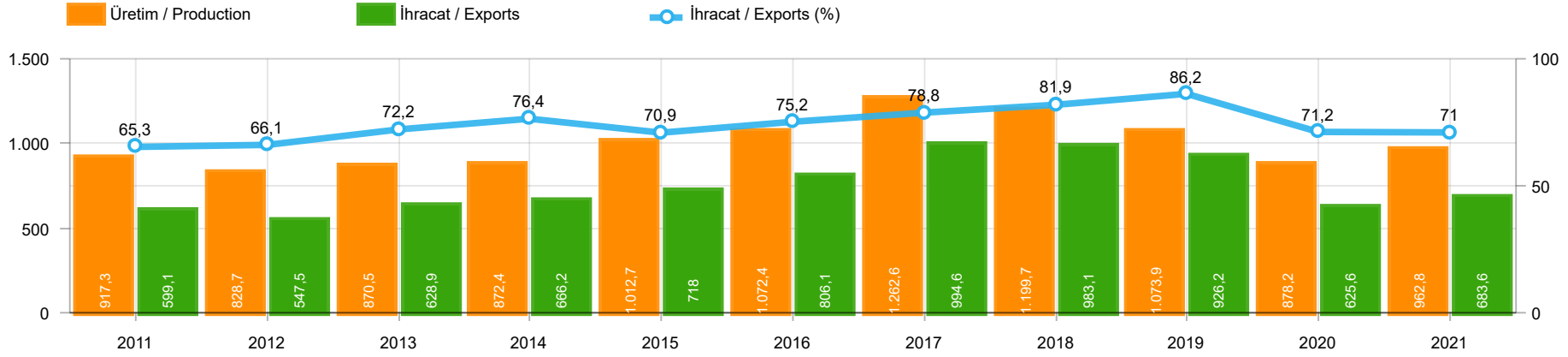
Aylar / Months	10 Yıl Ort. / 10 Years Avr.	2021	%
1	150	144	-3,9
2	174	80	-54,0
3	239	182	-23,9
4	211	140	-33,5
5	266	101	-62,1
6	226	116	-48,6
7	146	40	-72,7
8	141	38	-73,0
9	135	41	-69,6
TOPLAM / TOTAL	1.688	882	-47,7

Yıl / Year	1	2	3	4	5	6	7	8	9	10	11	12	1-9 Toplam / Total	Toplam / Total	1-9 Yerli / Local	1-9 İthal / Import	İthal Oran / Import %
2011	92	212	233	324	412	334	148	214	130	176	176	321	2.099	2.772	2.015	84	4,0
2012	125	103	215	172	397	262	174	182	251	229	150	344	1.881	2.604	1.849	32	1,7
2013	365	445	537	489	580	520	412	281	245	198	123	189	3.874	4.384	3.847	27	0,7
2014	199	179	253	251	305	148	69	92	130	91	97	332	1.626	2.146	1.473	153	9,4
2015	146	222	313	290	290	255	211	203	153	171	359	363	2.083	2.976	2.014	69	3,3
2016	180	209	218	240	214	307	76	82	141	198	314	236	1.667	2.415	1.636	31	1,9
2017	174	119	167	124	188	115	206	187	92	231	109	235	1.372	1.947	1.358	14	1,0
2018	78	65	215	136	125	164	45	42	74	107	113	188	944	1.352	933	11	1,2
2019	75	54	112	35	97	41	25	45	84	28	42	54	568	692	568	-	-
2020	64	130	128	45	55	112	98	79	50	82	64	131	761	1.038	761	-	-
2021	144	80	182	140	101	116	40	38	41				882	882	882	-	-



Aylar / Months	10 Yıl Ort. / 10 Years Avr.	2021	%
1	1.738	1.580	-9,1
2	2.401	2.821	17,5
3	3.595	3.618	0,6
4	3.032	3.063	1,0
5	3.258	2.776	-14,8
6	3.152	3.485	10,6
7	2.332	1.883	-19,2
8	2.226	2.119	-4,8
9	2.813	2.593	-7,8
TOPLAM / TOTAL	24.547	23.938	-2,5

Yıl / Year	1	2	3	4	5	6	7	8	9	10	11	12	1-9 Toplam / Total	Toplam / Total	1-9 Yerli / Local	1-9 İthal / Import	İthal Oran / Import %
2011	2.867	3.923	5.642	5.087	5.216	4.419	2.614	3.239	4.184	3.806	3.493	6.558	37.191	51.048	25.480	11.711	31,5
2012	2.007	2.814	4.358	3.610	4.332	4.041	3.140	2.834	3.872	2.995	3.493	6.042	31.008	43.538	22.487	8.521	27,5
2013	2.040	2.826	4.169	3.690	4.367	3.947	3.556	2.619	3.425	2.676	4.169	6.330	30.639	43.814	23.543	7.096	23,2
2014	2.081	2.638	3.731	3.808	4.326	4.132	2.863	3.104	4.233	3.169	3.747	7.854	30.916	45.686	23.450	7.466	24,1
2015	2.641	3.890	6.463	4.580	4.262	4.913	3.522	2.667	3.156	2.831	3.830	8.291	36.094	51.046	26.704	9.390	26,0
2016	1.656	2.015	2.984	2.861	3.186	3.126	1.199	2.098	1.820	2.666	3.153	3.794	20.945	30.558	15.583	5.362	25,6
2017	1.317	1.620	2.376	2.243	2.644	2.162	2.430	2.282	2.694	2.687	2.913	5.267	19.768	30.635	14.478	5.290	26,8
2018	1.449	1.759	3.255	2.760	2.241	1.751	1.460	791	887	750	1.202	2.308	16.353	20.613	10.872	5.481	33,5
2019	474	694	1.430	973	931	1.211	515	586	1.076	1.213	1.399	2.385	7.890	12.887	5.385	2.505	31,7
2020	850	1.826	1.546	708	1.073	1.816	2.018	2.037	2.787	2.392	2.683	3.626	14.661	23.362	10.119	4.542	31,0
2021	1.580	2.821	3.618	3.063	2.776	3.485	1.883	2.119	2.593				23.938	23.938	14.776	9.162	38,3



	2011	2012	2013	2014	2015	2016	2017	2018	2019	2020	2021
İhracat/Export	599.091	547.510	628.879	666.234	717.999	806.075	994.640	983.085	926.183	625.645	683.647
Üretim/Production	917.275	828.668	870.469	872.431	1.012.671	1.072.419	1.262.599	1.199.727	1.073.857	878.166	962.829
İhracat/Exports (%)	65,3	66,1	72,2	76,4	70,9	75,2	78,8	81,9	86,2	71,2	71

Taşıt Araçları İhracatı (2019 - 2021)
Motor Vehicle Exports (2019 - 2021)

SEKTÖR / SECTOR	2019	2020	1/9-2020	1/9-2021	2021/2020 %
OTOMOBİL / Pass.Car	828.744	596.616	417.045	401.437	-3,7
OTOMOBİL TOPLAM / Pass. Car Total	828.744	596.616	417.045	401.437	-3,7
KAMYON / Truck	14.824	10.333	6.986	10.464	49,8
KAMYONET / Pick Up	349.490	263.767	162.136	226.896	39,9
OTOBÜS / Bus	9.001	6.886	5.055	3.207	-36,6
MİNİBÜS / Minibus	49.283	38.296	24.461	29.010	18,6
MİDİBÜS / Midibus	1.244	640	442	660	49,3
TİCARİ ARAÇLAR TOPLAM / Commercial Vehicle Total	423.842	319.922	199.080	270.237	35,7
TAŞIT ARAÇLARI TOPLAM / Motor Vehicles Total	1.252.586	916.538	616.125	671.674	9,0
TRAKTÖR / F.Tractor	15.844	13.495	9.520	11.973	25,8
TRAKTÖR TOPLAM / F.Tractor Total	15.844	13.495	9.520	11.973	25,8
GENEL TOPLAM / GRAND TOTAL	1.268.430	930.033	625.645	683.647	9,3

Üretici Bazında İhracat (adet)
Exports by Manufacturer (unit)

Üreticiler / Manufacturers	2019	2020	1-9 / 2020	1-9 / 2021
A.I.O.S.	1.433	510	377	637
FORD OTOSAN	333.734	254.003	157.346	212.236
HATTAT TRAKTÖR	637	942	530	607
HONDA TÜRKİYE	7.528	6.421	5.704	2.280
HYUNDAI ASSAN	169.803	128.003	97.464	109.237
KARSAN	2.713	755	471	1.098
M. BENZ TÜRK	16.324	11.184	7.839	8.306
MAN TÜRKİYE	2.892	2.628	2.046	1.249
OTOKAR	1.156	862	528	486
OYAK RENAULT	295.275	211.954	144.858	124.981
TEMSA	602	243	146	362
TOFAŞ	194.107	117.886	77.607	82.611
TOYOTA	227.019	182.089	121.739	128.191
TÜRK TRAKTÖR	15.207	12.553	8.990	11.366
GENEL TOPLAM / Grand Total	1.268.430	930.033	625.645	683.647

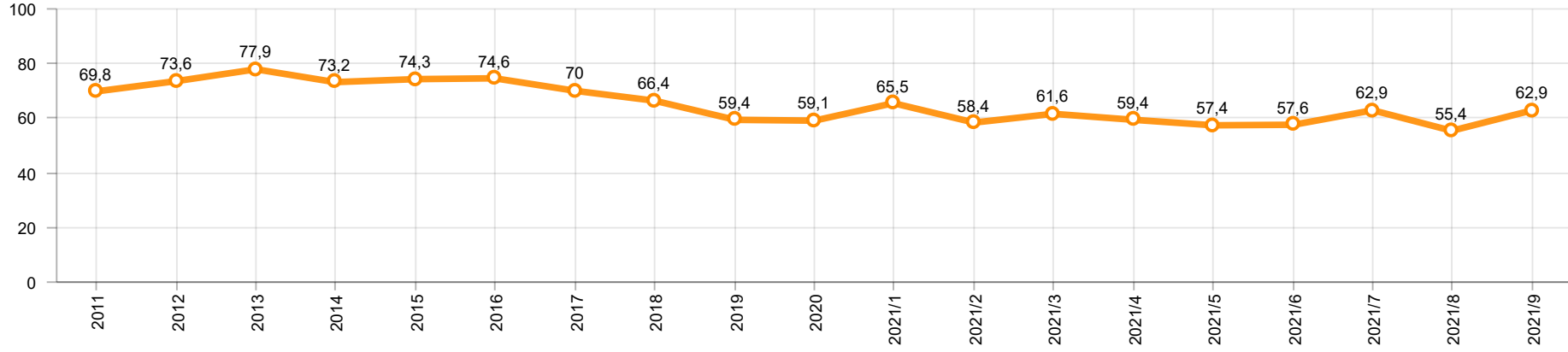
Otomotiv Ana ve Yan Sanayii İhracatı (ABD \$)
CBU and CKD Exports - \$

Sektör / Sector	2019	2020	OCAK - EYLÜL / January - September 2020	OCAK - EYLÜL / January - September 2021	2021 / 2020 %
Toplam Yan Sanayi / Total Component Industry	10.616.350.211,16	9.454.364.326,61	6.558.257.939,32	8.850.277.368,21	34,9
İç ve Dış Lastik / Tyres	1.479.050.683,54	1.248.005.046,63	914.009.272,45	1.209.312.481,23	32,3
Emniyet Camı / Safety Glasses	150.643.773,04	140.363.576,74	96.939.929,18	146.772.758,14	51,4
Motor / Engine	518.051.730,93	461.449.027,72	350.232.654,41	238.729.567,3	-31,8
Akümülatör / Batteries	397.317.829,27	353.038.607,91	239.455.187,92	351.835.769,15	46,9
Diğer Aksam ve Parça / Spare Parts&Components	8.071.286.194,38	7.251.508.067,61	4.957.620.895,36	6.903.626.792,39	39,3
Toplam Ana Sanayi / Total Vehicle Industry	20.613.753.125,48	16.491.127.868,9	10.854.078.072,73	12.821.932.793,01	18,1
Otobüs / Bus	1.759.421.232,04	1.300.660.458,98	914.128.790,76	690.396.517,11	-24,5
Midibüs-Minibüs / Midibus-Minibus	222.922.951,87	188.434.401,85	141.273.047,11	131.730.110,05	-6,8
Otomobil / P.Cars	11.864.815.315,9	9.312.088.333,82	6.273.222.883,9	6.620.539.847,8	5,5
Kamyon-Kamyonet / Truck-Pick Up&Van	4.945.359.113,74	4.254.957.839,91	2.542.815.994,88	3.972.889.702,69	56,2
Römork ve Yarı Römork / Trailer-Semi Trailer	503.203.636,07	417.420.859,24	288.536.388,61	419.847.130,39	45,5
Çekici / Tractor	839.891.842,8	602.899.223,51	408.033.013,72	621.092.515,98	52,2
Tarım Traktörü / Farm Tractor	478.139.033,06	414.666.751,59	286.067.953,75	365.436.968,99	27,7
Toplam / Total	31.230.103.336,64	25.945.492.195,51	17.412.336.012,05	21.672.210.161,22	24,5

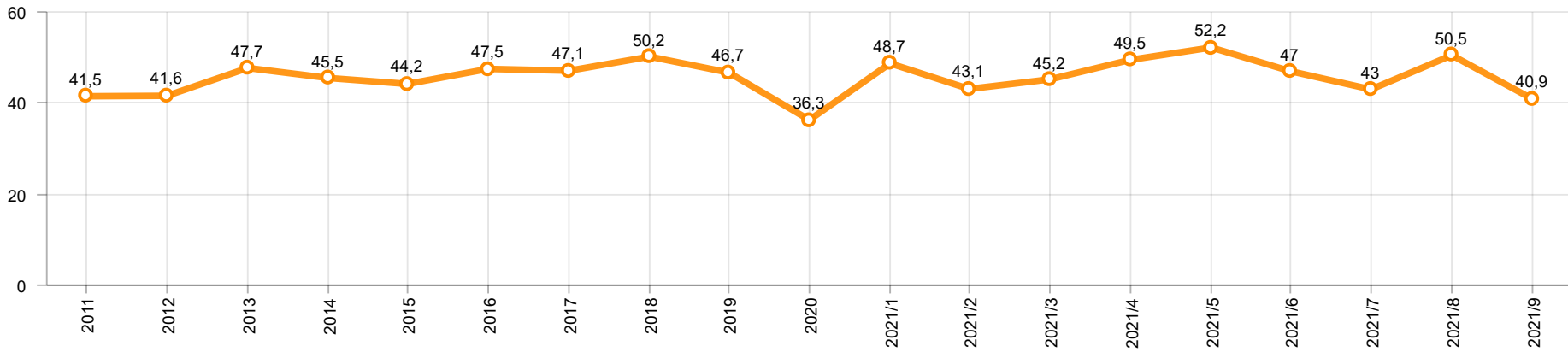
Kaynak: Uludağ İhracatçı Birlikleri . ÜİB tarafından OSD için özel olarak analiz edilen Otomotiv İhracatı kapsamında; ÜİB Türkiye Geneli Otomotiv Endüstrisi sınıflandırmasına kıyasla “Römork ve Yarı Römork” , “Tarım Traktörü” verileri dahil edilmekte; “Kullanılmış Araçlar” ,”İki Tekerlekli Taşıtlar” , “Demiryolu Taşıtları” hariç tutulmaktadır.

Source: Uludağ Exporters Association – Special Analyze for OSD.Compared to Turkish General Automotive Industry classification, this special analyze includes; farms tractors, trailers and semi-trailers, does not include; used vehicles, two-wheeled vehicles and railway vehicles

Otomobil Pazarında İthalatın Payı (%)
Import Share in P.Car Market (%)



Hafif Ticari Araçlar Pazarında İthalatın Payı (%)
Import Share in LCV Market (%)



Araç Tipleri / Vehicle Types	1	2	3	4	5	6	7	8	9	10	11	12	Toplam / Total
OTOMOBİL - Pass.Car	48.049	50.384	57.024	56.599	44.565	40.506	26.231	42.346	35.733				401.437
KAMYON - H. Truck	986	1.332	2.069	1.441	796	973	683	1.106	964				10.350
K.KAMYON - L. Truck	12	12	6	6	6	24	-	48	-				114
KAMYONET - Pick Up	25.164	31.489	31.340	18.079	5.971	25.976	20.322	33.622	34.933				226.896
OTOBÜS - Bus	121	258	303	344	398	512	483	455	333				3.207
MİNİBÜS - Minibus	3.159	4.405	4.836	1.605	58	2.405	3.501	4.939	4.102				29.010
MİDİBÜS - Midibus	77	28	57	39	53	61	56	105	184				660
TİCARİ ARAÇLAR TOPLAMI - CV Total	29.519	37.524	38.611	21.514	7.282	29.951	25.045	40.275	40.516				270.237
TAŞIT ARAÇLARI TOPLAMI - MV Total	77.568	87.908	95.635	78.113	51.847	70.457	51.276	82.621	76.249				671.674
TRAKTÖR - F.Tractor	1.235	1.080	1.311	1.356	1.231	1.687	1.282	867	1.924				11.973
GENEL TOPLAM - Grand Total	78.803	88.988	96.946	79.469	53.078	72.144	52.558	83.488	78.173				683.647

Otomobil / P.Car

Firmalar / Firms	1	2	3	4	5	6	7	8	9	10	11	12	Toplam / Total
FORD OTOSAN	378	669	166	222	36	19	169	53	97	-	-	-	1.809
HONDA TÜRKİYE	149	118	243	120	179	211	240	30	990	-	-	-	2.280
HYUNDAI ASSAN	9.920	10.963	15.565	12.209	10.400	14.080	11.400	13.600	11.100	-	-	-	109.237
OYAK RENAULT	14.070	15.130	17.913	20.650	15.838	10.149	9	20.754	10.468	-	-	-	124.981
TOFAŞ	4.038	6.889	4.852	6.345	5.126	4.278	566	1.255	1.590	-	-	-	34.939
TOYOTA	19.494	16.615	18.285	17.053	12.986	11.769	13.847	6.654	11.488	-	-	-	128.191
TOPLAM - Total	48.049	50.384	57.024	56.599	44.565	40.506	26.231	42.346	35.733	-	-	-	401.437

Kamyonet / Pick-up

Firmalar / Firms	1	2	3	4	5	6	7	8	9	10	11	12	Toplam / Total
A.I.O.S.	-	-	-	-	-	-	-	-	-	-	-	-	-
FORD OTOSAN	19.856	24.107	26.608	13.013	1.598	21.400	18.276	28.260	25.117	-	-	-	178.235
KARSAN	22	16	4	-	74	68	140	305	257	-	-	-	886
OTOKAR	-	37	14	24	1	10	14	-	3	-	-	-	103
TOFAŞ	5.286	7.329	4.714	5.042	4.298	4.498	1.892	5.057	9.556	-	-	-	47.672
TOPLAM - Total	25.164	31.489	31.340	18.079	5.971	25.976	20.322	33.622	34.933	-	-	-	226.896

Minibüs / Minibus

Firmalar / Firms	1	2	3	4	5	6	7	8	9	10	11	12	Toplam / Total
FORD OTOSAN	3.159	4.404	4.826	1.598	58	2.394	3.501	4.915	4.044	-	-	-	28.899
KARSAN	-	1	10	7	-	11	-	24	58	-	-	-	111
TOPLAM - Total	3.159	4.405	4.836	1.605	58	2.405	3.501	4.939	4.102	-	-	-	29.010

Kamyon / Truck

Firmalar / Firms	1	2	3	4	5	6	7	8	9	10	11	12	Toplam / Total
A.I.O.S.	12	12	6	6	6	24	-	48	-	-	-	-	114
FORD OTOSAN	214	253	372	376	415	214	199	601	649	-	-	-	3.293
KARSAN	-	-	-	-	-	-	-	-	-	-	-	-	-
M. BENZ TÜRK	772	1.079	1.697	1.065	381	759	484	505	315	-	-	-	7.057
OTOKAR	-	-	-	-	-	-	-	-	-	-	-	-	-
TEMSA	-	-	-	-	-	-	-	-	-	-	-	-	-
TOPLAM - Total	998	1.344	2.075	1.447	802	997	683	1.154	964	-	-	-	10.464

Midibüs / Midibus

Firmalar / Firms	1	2	3	4	5	6	7	8	9	10	11	12	Toplam / Total
A.I.O.S.	31	21	47	11	26	22	30	40	104	-	-	-	332
KARSAN	-	-	3	1	5	3	1	26	62	-	-	-	101
OTOKAR	44	6	4	22	4	19	20	28	11	-	-	-	158
TEMSA	2	1	3	5	18	17	5	11	7	-	-	-	69
TOPLAM - Total	77	28	57	39	53	61	56	105	184	-	-	-	660

Otobüs / Bus

Firmalar / Firms	1	2	3	4	5	6	7	8	9	10	11	12	Toplam / Total
A.I.O.S.	8	13	1	14	27	20	17	30	61	-	-	-	191
KARSAN	-	-	-	-	-	-	-	-	-	-	-	-	-
M. BENZ TÜRK	11	106	46	72	176	243	256	158	181	-	-	-	1.249
MAN TÜRKİYE	42	102	221	226	146	192	145	125	50	-	-	-	1.249
OTOKAR	47	8	13	6	19	23	18	81	10	-	-	-	225
TEMSA	13	29	22	26	30	34	47	61	31	-	-	-	293
TOPLAM - Total	121	258	303	344	398	512	483	455	333	-	-	-	3.207

Traktör / F.Tractor

Firmalar / Firms	1	2	3	4	5	6	7	8	9	10	11	12	Toplam / Total
HATTAT TRAKTÖR	20	50	69	52	72	60	65	117	102	-	-	-	607
TÜRK TRAKTÖR	1.215	1.030	1.242	1.304	1.159	1.627	1.217	750	1.822	-	-	-	11.366
TOPLAM - Total	1.235	1.080	1.311	1.356	1.231	1.687	1.282	867	1.924	-	-	-	11.973

Firmalar / Firms	2020 Toplam / Total	1	2	3	4	5	6	7	8	9	10	11	12	Toplam / Total
Alfa Romeo	214	76	20	11	9	8	21	12	12	7	-	-	-	176
Aston Martin	17	3	2	4	3	2	3	2	3	2	-	-	-	24
Audi	18.168	839	747	1.899	1.040	915	1.439	1.047	1.525	1.282	-	-	-	10.733
Bentley	11	-	1	-	4	1	1	1	-	1	-	-	-	9
BMW	14.270	613	937	1.822	1.349	904	1.319	1.105	1.429	1.416	-	-	-	10.894
Citroen	22.254	1.188	1.702	2.988	1.720	1.791	1.268	947	1.640	2.179	-	-	-	15.423
CUPRA	-	-	-	-	55	17	5	12	18	32	-	-	-	139
Dacia	25.910	1.396	1.611	3.540	2.500	1.605	3.191	2.999	2.745	2.906	-	-	-	22.493
DFSK	-	-	-	-	2	3	12	9	17	5	-	-	-	48
DS	694	20	35	80	15	106	92	23	83	121	-	-	-	575
Ferrari	21	1	-	5	2	4	2	2	1	1	-	-	-	18
Fiat	1.298	57	124	200	118	88	88	55	80	79	-	-	-	889
Ford	23.897	1.397	891	1.852	1.204	953	1.050	544	1.318	452	-	-	-	9.661
Honda	2.337	249	173	381	189	194	303	162	168	918	-	-	-	2.737
Hyundai	19.035	644	723	1.382	1.020	760	1.481	1.216	1.601	1.853	-	-	-	10.680
Jaguar	265	4	2	20	8	1	8	11	7	19	-	-	-	80
Jeep	4.369	177	266	444	203	229	592	254	272	162	-	-	-	2.599
Kia	13.542	1.306	1.502	1.833	1.917	1.174	2.113	1.600	1.042	916	-	-	-	13.403
Lamborghini	19	1	2	-	1	2	2	-	1	3	-	-	-	12
Land Rover	2.010	79	75	386	235	137	206	128	165	131	-	-	-	1.542
Lexus	143	21	14	12	23	9	38	12	18	5	-	-	-	152
Maserati	47	2	5	8	5	-	11	3	12	15	-	-	-	61
Mazda	156	7	10	17	6	4	9	12	14	13	-	-	-	92
Mercedes-Benz	15.617	977	984	2.243	1.673	1.447	2.133	1.013	1.533	967	-	-	-	12.970
MG	-	-	-	-	19	27	94	21	17	30	-	-	-	208
Mini	1.395	141	57	137	77	66	116	102	144	154	-	-	-	994
Mitsubishi	1.237	63	61	138	227	87	77	44	103	132	-	-	-	932
Nissan	12.717	1.435	1.682	1.869	683	542	1.237	707	1.524	1.573	-	-	-	11.252
Opel	31.229	1.672	1.708	3.148	2.010	1.857	2.391	1.167	895	1.876	-	-	-	16.724
Peugeot	36.589	2.677	2.742	3.485	1.758	2.561	2.544	724	691	2.897	-	-	-	20.079
Porsche	619	41	43	126	53	42	42	41	35	59	-	-	-	482
Renault	9.339	673	985	955	349	412	680	369	669	641	-	-	-	5.733
Seat	11.551	880	1.313	1.882	1.015	1.189	1.486	966	1.183	770	-	-	-	10.684
Skoda	24.175	1.930	2.708	5.204	2.200	2.014	3.521	2.028	1.376	892	-	-	-	21.873
Smart	49	-	4	3	-	-	-	-	-	2	-	-	-	9
Ssangyong	650	68	66	103	49	20	45	22	90	57	-	-	-	520
Subaru	673	31	27	84	63	60	85	42	56	106	-	-	-	554
Suzuki	2.977	77	91	419	205	357	441	430	551	566	-	-	-	3.137
Toyota	2.016	111	113	294	173	149	251	147	254	137	-	-	-	1.629
Volkswagen	52.740	4.082	4.286	9.440	5.759	4.506	6.617	4.202	2.785	3.256	-	-	-	44.933
Volvo	8.200	215	425	660	800	520	880	650	700	650	-	-	-	5.500
GENEL TOPLAM - Grand Total	360.450	23.153	26.137	47.074	28.741	24.763	35.894	22.831	24.777	27.283	-	-	-	260.653

Firmalar / Firms	2020 Toplam / Total	1	2	3	4	5	6	7	8	9	10	11	12	Toplam / Total
Citroen	5.226	277	533	602	539	321	427	255	337	360	-	-	-	3.651
Dacia	4.890	768	650	772	363	372	894	1.016	1.675	625	-	-	-	7.135
Fiat	3.861	100	298	360	178	306	395	165	209	147	-	-	-	2.158
Ford	3.034	60	62	143	89	418	253	181	148	147	-	-	-	1.501
Hyundai	990	125	244	185	123	56	181	108	199	127	-	-	-	1.348
Isuzu	229	13	6	56	68	42	63	48	60	73	-	-	-	429
Iveco	1.851	91	209	316	215	149	270	223	277	275	-	-	-	2.025
Kia	1.900	152	203	256	212	147	141	-	80	68	-	-	-	1.259
Mercedes-Benz	5.175	155	414	637	393	489	875	467	687	413	-	-	-	4.530
Mitsubishi	4.629	402	351	418	464	217	379	227	267	295	-	-	-	3.020
Nissan	544	82	61	53	171	109	121	92	114	87	-	-	-	890
Opel	3.067	176	470	528	225	243	314	107	92	478	-	-	-	2.633
Peugeot	7.085	519	669	1.318	690	514	705	459	439	812	-	-	-	6.125
Renault	2.634	269	349	863	424	297	467	154	487	659	-	-	-	3.969
Ssangyong	434	20	30	54	30	28	36	15	23	48	-	-	-	284
Toyota	1.417	238	62	995	942	588	592	368	397	222	-	-	-	4.404
Volkswagen	12.036	626	1.315	1.510	1.366	1.754	2.097	1.071	1.421	774	-	-	-	11.934
GENEL TOPLAM - Grand Total	59.002	4.073	5.926	9.066	6.492	6.050	8.210	4.956	6.912	5.610	-	-	-	57.295