



OTOMOTİV SANAYİİ DERNEĐİ  
AUTOMOTIVE MANUFACTURERS ASSOCIATION

# OTOMOTİV SEKTÖRÜ AYLIK DEĐERLENDİRME RAPORU EKİM 2020

AUTOMOTIVE INDUSTRY MONTHLY REPORT  
October 2020

OSD "OICA" Üyesidir © O I C A OSD is a Member of "OICA"

	10 - 2019	10 - 2020	%	1 - 10 / 2019	1 - 10 / 2020	%	11/2018 - 10/2019	11/2019 - 10/2020	%
Otomobil Üretimi/P.Cars Production	93.575	95.915	2,5	794.156	671.676	-15,4	961.979	860.162	-10,6
Toplam Üretim/Total Production	132.155	150.746	14,1	1.189.534	1.004.974	-15,5	1.441.402	1.276.684	-11,4
Otomobil Pazarı/P.Cars Market	39.996	76.341	90,9	268.624	465.031	73,1	375.671	583.663	55,4
Toplam Pazar/Total Market	50.288	97.108	93,1	339.487	605.390	78,3	478.907	757.850	58,3
Otomobil İthalatı/P.Cars Import	28.694	45.718	59,3	158.417	278.041	75,5	228.754	349.702	52,9
Toplam İthalat/Total Import	33.685	53.476	58,8	191.489	329.125	71,9	277.886	414.705	49,2
Otomobil İhracatı/P.Cars Export	82.400	63.657	-22,8	676.486	480.702	-28,9	819.491	632.960	-22,8
Toplam İhracat/Total Export	117.523	104.093	-11,4	1.031.295	720.208	-30,2	1.250.841	941.499	-24,7
Otomobil İhracatı(\$)/P.Cars Export (\$)	1.202.679.367,35	1.040.564.495,84	-13,5	9.575.446.413	7.313.799.355	-23,6	11.669.700.206	9.603.168.258	-17,7
Toplam İhracat(\$)/Total Export (\$)*	2.894.343.420,47	2.962.342.274,26	2,4	25.883.934.888	20.376.794.982	-21,3	31.216.295.419	25.723.065.202	-17,6

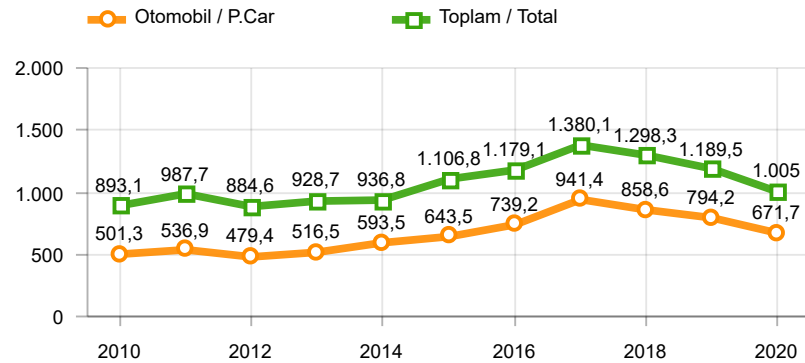
Parametreler/Parameters	10 - 2019	10 - 2020	%	1 - 10 / 2019	1 - 10 / 2020	%	11/2018 - 10/2019	11/2019 - 10/2020	%
ÜFE / PPI	0,2	3,6	-	6,7	17,5	-	22,6	9,1	-
TÜFE / CPI	2,0	2,1	-	10,6	10,6	-	16,8	11,7	-
Sanayi Endeksi / Industry Index	0,0	3,7	-	6,1	18,9	-	20,8	9,1	-
Dolar \$ ** (1 birim)	5,7	7,9	38,3	5,6	6,8	21,8	5,6	6,7	19,8
Euro € ** (1 birim)	6,3	9,3	47,8	6,3	7,7	23,0	6,3	7,5	20,3
Japon Yeni ¥ ** (100 birim)	5,2	7,4	42,4	5,1	6,4	24,1	5,0	6,2	22,3

\*Toplam Sanayi / Total Industry Including Components

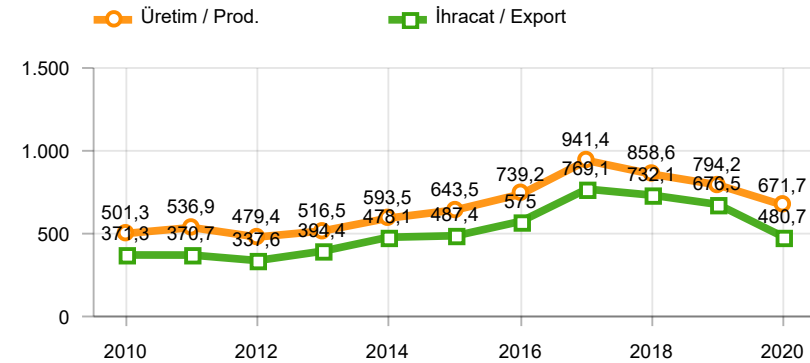
\*\* Ortalama Değerler / Average Values

Araç Tipleri / Types	10 / 2019	10 / 2020	10 % Değişim	1-10 / 2019	1-10 / 2020	1-10 % Değişim
OTOMOBİL / Pass.Car	93.575	95.915	2,5	794.156	671.676	-15,4
<b>OTOMOBİL Toplam / Pass.Car Total</b>	<b>93.575</b>	<b>95.915</b>	<b>2,5</b>	<b>794.156</b>	<b>671.676</b>	<b>-15,4</b>
B.KAMYON / H. Truck	989	2.495	152,3	15.539	15.947	2,6
K.KAMYON / L. Truck	134	303	126,1	767	1.426	85,9
KAMYONET / Pick Up	30.152	45.758	51,8	319.348	266.941	-16,4
OTOBÜS / Bus	989	712	-28,0	7.751	6.542	-15,6
MİNİBÜS / Minibus	6.025	5.406	-10,3	49.969	40.782	-18,4
MİDİBÜS / Midibus	291	157	-46,0	2.004	1.660	-17,2
<b>TİCARİ ARAÇLAR Toplam / Commercial Vehicles Total</b>	<b>38.580</b>	<b>54.831</b>	<b>42,1</b>	<b>395.378</b>	<b>333.298</b>	<b>-15,7</b>
<b>TAŞIT ARAÇLARI Toplam / Motor Vehicles Total</b>	<b>132.155</b>	<b>150.746</b>	<b>14,1</b>	<b>1.189.534</b>	<b>1.004.974</b>	<b>-15,5</b>
TRAKTÖR / F.Tractor	2.656	4.575	72,3	19.134	28.511	49,0
<b>TRAKTÖR Toplam / F.Tractor Total</b>	<b>2.656</b>	<b>4.575</b>	<b>72,3</b>	<b>19.134</b>	<b>28.511</b>	<b>49,0</b>
<b>GENEL TOPLAM / Grand Total</b>	<b>134.811</b>	<b>155.321</b>	<b>15,2</b>	<b>1.208.668</b>	<b>1.033.485</b>	<b>-14,5</b>

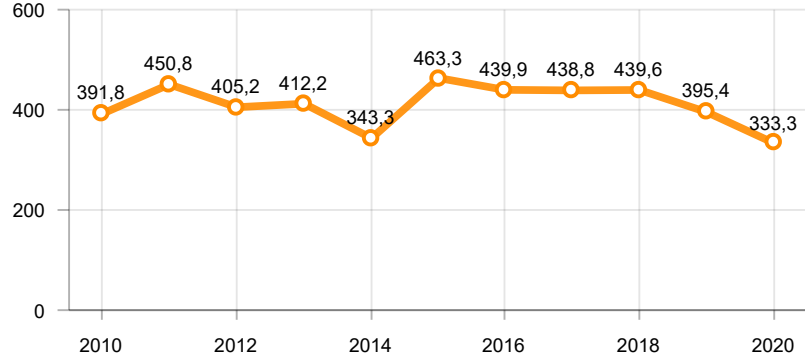
Toplam Üretim ve Otomobil Üretimi (x1000)(OCAK - EKİM)  
Total & P.Cars Production (x1000)(January - October)



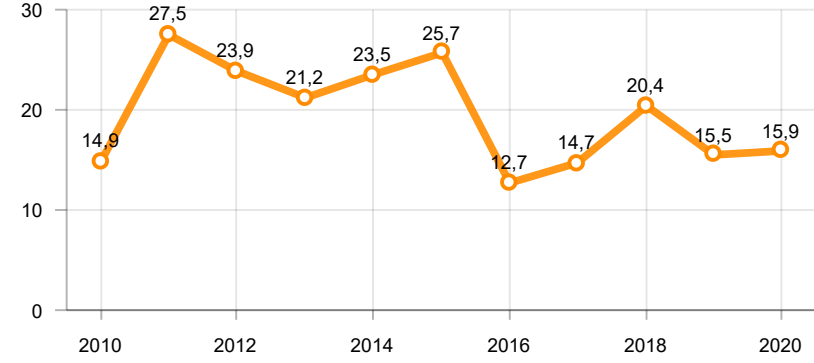
Otomobil Üretimi ve İhracat (x1000)(OCAK - EKİM)  
P.Cars Production & Exports (x1000)(January - October)



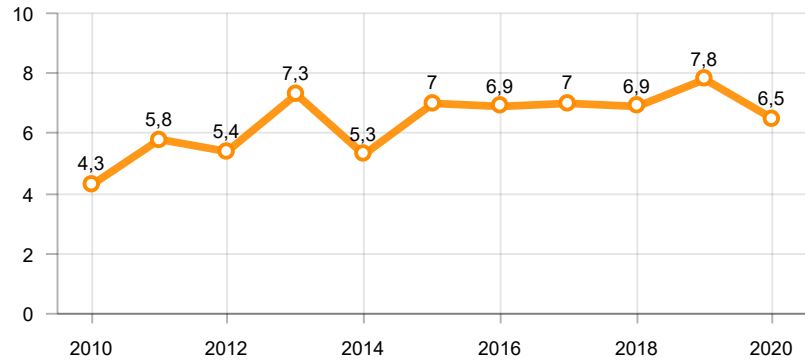
**Ticari Araç Üretimi (x1000)(OCAK - EKİM)**  
Commercial Vehicle Production (x1000)(January - October)



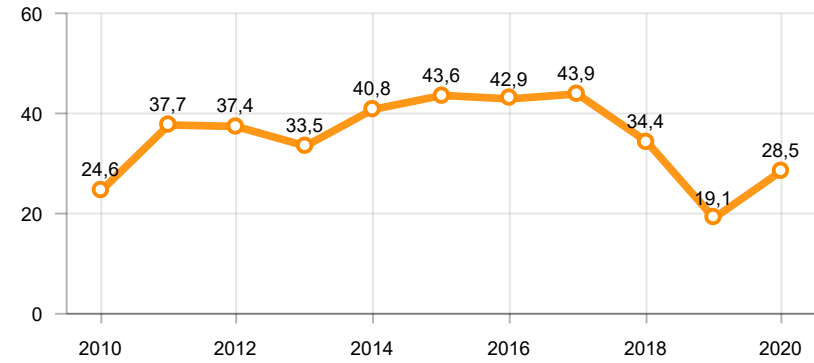
**Büyük Kamyon Üretimi (x1000)(OCAK - EKİM)**  
Heavy Truck Production (x1000)(January - October)

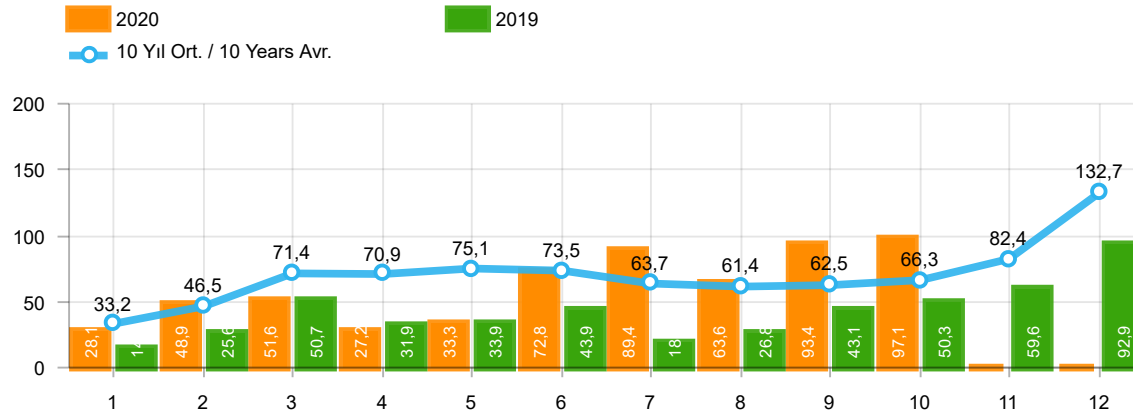


**Otobüs Üretimi (x1000)(OCAK - EKİM)**  
Bus Production (x1000)(January - October)



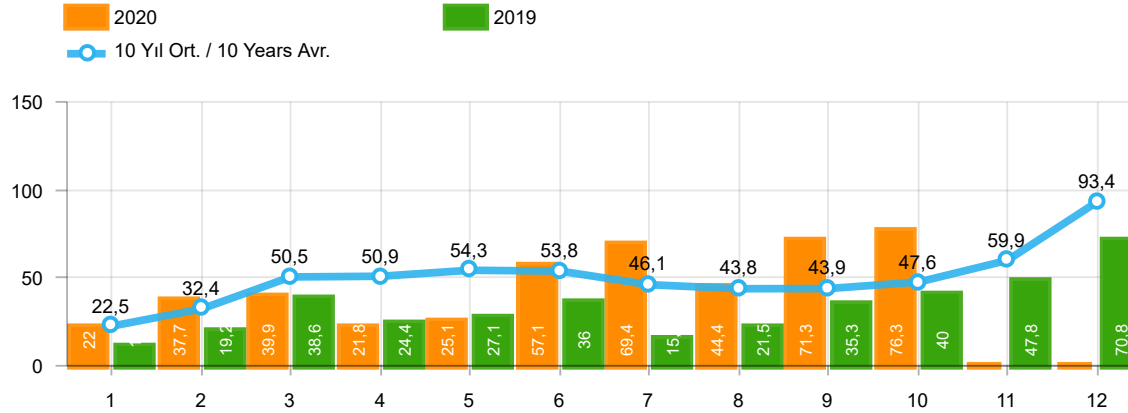
**Traktör Üretimi (x1000)(OCAK - EKİM)**  
F. Tractor Production (x1000)(January - October)





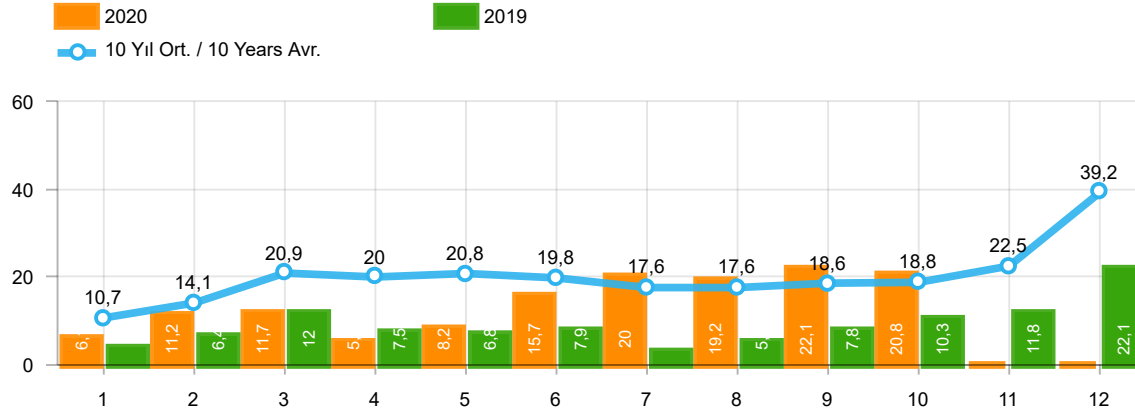
Aylar / Months	10 Yıl Ort / 10 Years Avr.	2020	%
1	33.233	28.123	-15,4
2	46.483	48.948	5,3
3	71.368	51.554	-27,8
4	70.895	27.165	-61,7
5	75.107	33.308	-55,7
6	73.519	72.789	-1,0
7	63.748	89.419	40,3
8	61.423	63.570	3,5
9	62.462	93.406	49,5
10	66.314	97.108	46,4
TOPLAM/TOTAL	624.557	605.390	-3,1

Yıl / Year	1	2	3	4	5	6	7	8	9	10	11	12	1-10 Toplam / Total	Toplam / Total	1-10 Yerli / Local	1-10 İthal / Import	İthal Oran / Import %
2010	21.070	32.331	54.019	57.241	61.837	63.511	64.011	64.961	67.040	76.753	77.488	155.234	562.774	795.496	236.484	326.290	58,0
2011	47.759	62.586	84.045	82.782	85.862	85.992	65.658	61.645	64.313	73.227	67.150	134.468	713.869	915.487	291.273	422.596	59,2
2012	31.552	44.138	69.242	66.559	75.195	75.108	65.444	60.982	73.501	62.933	75.203	121.442	624.654	821.299	236.286	388.368	62,2
2013	37.563	51.133	72.943	77.265	85.835	78.043	75.152	67.662	71.388	60.690	83.470	136.048	677.674	897.192	211.066	466.608	68,9
2014	34.751	37.659	51.312	57.113	62.447	64.295	62.770	63.303	70.764	69.742	84.368	154.843	574.156	813.367	197.036	377.120	65,7
2015	37.256	59.221	89.765	96.182	85.804	91.071	87.358	85.244	67.181	67.086	88.431	164.464	766.168	1.019.063	264.108	502.060	65,5
2016	34.369	54.840	85.932	87.748	97.090	94.666	59.732	73.654	69.413	85.666	125.462	145.706	743.110	1.014.278	238.135	504.975	68,0
2017	36.640	48.585	76.178	78.231	88.066	85.820	84.727	74.818	74.046	94.439	103.772	141.507	741.550	986.829	268.817	472.733	63,7
2018	36.525	48.768	79.600	73.886	74.996	52.788	54.194	35.137	23.915	22.321	59.406	80.014	502.130	641.550	191.259	310.871	61,9
2019	14.847	25.569	50.651	31.944	33.947	43.899	18.442	26.832	43.068	50.288	59.575	92.885	339.487	491.947	147.998	191.489	56,4
2020	28.123	48.948	51.554	27.165	33.308	72.789	89.419	63.570	93.406	97.108			605.390	605.390	276.265	329.125	54,4



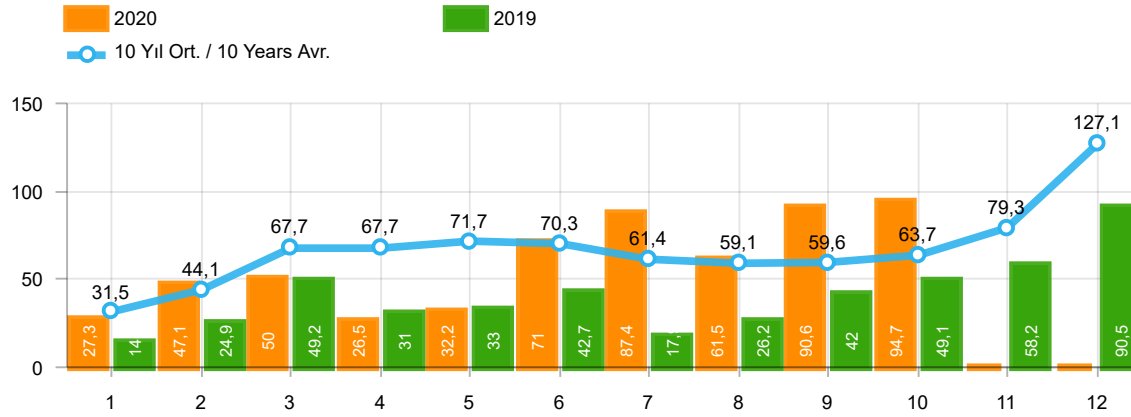
Aylar / Months	10 Yıl Ort / 10 Years Avr.	2020	%
1	22.488	22.016	-2,1
2	32.399	37.727	16,4
3	50.454	39.887	-20,9
4	50.915	21.825	-57,1
5	54.285	25.073	-53,8
6	53.751	57.067	6,2
7	46.135	69.427	50,5
8	43.822	44.372	1,3
9	43.874	71.296	62,5
10	47.560	76.341	60,5
TOPLAM / TOTAL	445.683	465.031	4,3

Yıl / Year	1	2	3	4	5	6	7	8	9	10	11	12	1-10 Toplam / Total	Toplam / Total	1-10 Yerli / Local	1-10 İthal / Import	İthal Oran / Import %
2010	12.594	20.651	33.958	36.549	40.467	42.086	41.399	42.222	42.477	47.859	50.061	99.461	360.262	509.784	111.597	248.665	69,0
2011	29.868	39.004	54.023	53.835	56.302	56.714	43.518	38.875	39.964	47.508	44.951	88.957	459.611	593.519	142.257	317.354	69,0
2012	21.077	29.189	47.270	45.645	50.460	50.849	44.531	41.236	49.360	43.440	52.297	80.926	423.057	556.280	115.922	307.135	72,6
2013	25.835	36.814	51.785	56.999	62.383	58.290	55.712	51.611	52.925	46.985	64.117	101.199	499.339	664.655	110.263	389.076	77,9
2014	24.368	27.167	37.812	42.769	46.379	47.278	46.602	45.131	49.262	50.814	59.695	110.054	417.582	587.331	108.721	308.861	74,0
2015	24.498	40.817	61.676	70.211	62.878	67.766	64.218	61.753	47.088	47.954	62.397	114.340	548.859	725.596	138.431	410.428	74,8
2016	23.358	40.588	63.975	65.618	73.832	71.111	45.566	53.977	51.340	63.746	95.783	108.044	553.111	756.938	133.869	419.242	75,8
2017	25.689	34.658	55.616	57.998	65.799	66.164	62.384	54.890	53.423	70.488	75.956	99.694	547.109	722.759	164.605	382.504	69,9
2018	26.611	35.901	59.798	55.108	57.227	41.225	42.024	26.976	17.595	16.809	46.204	60.843	379.274	486.321	126.695	252.579	66,6
2019	10.979	19.205	38.628	24.416	27.126	36.024	15.398	21.544	35.308	39.996	47.803	70.829	268.624	387.256	110.207	158.417	59,0
2020	22.016	37.727	39.887	21.825	25.073	57.067	69.427	44.372	71.296	76.341			465.031	465.031	186.990	278.041	59,8



Aylar / Months	10 Yıl Ort / 10 Years Avr.	2020	%
1	10.746	6.107	-43,2
2	14.084	11.221	-20,3
3	20.915	11.667	-44,2
4	19.980	5.340	-73,3
5	20.823	8.235	-60,5
6	19.769	15.722	-20,5
7	17.614	19.992	13,5
8	17.602	19.198	9,1
9	18.589	22.110	18,9
10	18.755	20.767	10,7
TOPLAM / TOTAL	178.874	140.359	-21,5

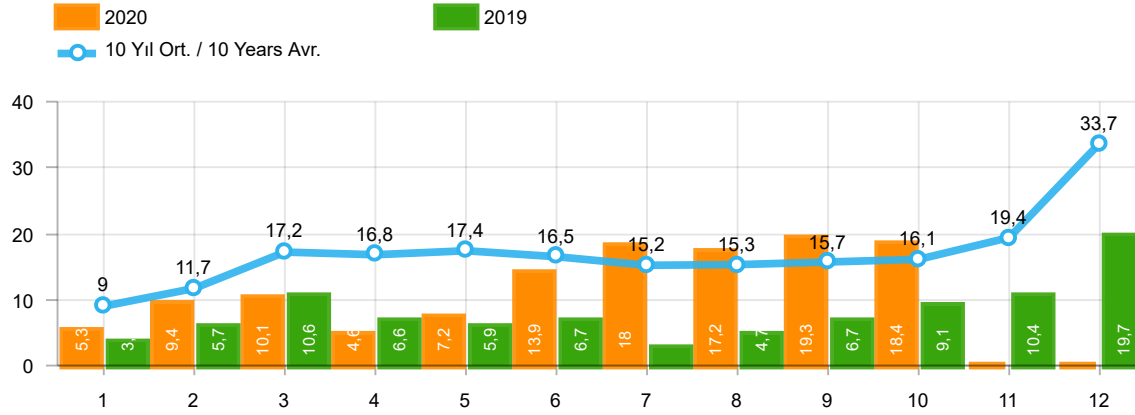
Yıl / Year	1	2	3	4	5	6	7	8	9	10	11	12	1-10 Toplam / Total	Toplam / Total	1-10 Yerli / Local	1-10 İthal / Import	İthal Oran / Import %
2010	8.476	11.680	20.061	20.692	21.370	21.425	22.612	22.739	24.563	28.894	27.427	55.773	202.512	285.712	124.887	77.625	38,3
2011	17.891	23.582	30.022	28.947	29.560	29.278	22.140	22.770	24.349	25.719	22.199	45.511	254.258	321.968	149.016	105.242	41,4
2012	10.475	14.949	21.972	20.914	24.735	24.259	20.913	19.746	24.141	19.493	22.906	40.516	201.597	265.019	120.364	81.233	40,3
2013	11.728	14.319	21.158	20.266	23.452	19.753	19.440	16.051	18.463	13.705	19.353	34.849	178.335	232.537	100.803	77.532	43,5
2014	10.383	10.492	13.500	14.344	16.068	17.017	16.168	18.172	21.502	18.928	24.673	44.789	156.574	226.036	88.315	68.259	43,6
2015	12.758	18.404	28.089	25.971	22.926	23.305	23.140	23.491	20.093	19.132	26.034	50.124	217.309	293.467	125.677	91.632	42,2
2016	11.011	14.252	21.957	22.130	23.258	23.555	14.166	19.677	18.073	21.920	29.679	37.662	189.999	257.340	104.266	85.733	45,1
2017	10.951	13.927	20.562	20.233	22.267	19.656	22.343	19.928	20.623	23.951	27.816	41.813	194.441	264.070	104.212	90.229	46,4
2018	9.914	12.867	19.802	18.778	17.769	11.563	12.170	8.161	6.320	5.512	13.202	19.171	122.856	155.229	64.564	58.292	47,4
2019	3.868	6.364	12.023	7.528	6.821	7.875	3.044	5.288	7.760	10.292	11.772	22.056	70.863	104.691	37.791	33.072	46,7
2020	6.107	11.221	11.667	5.340	8.235	15.722	19.992	19.198	22.110	20.767			140.359	140.359	89.275	51.084	36,4



Aylar / Months	10 Yıl Ort / 10 Years Avr.	2020	%
1	31.483	27.273	-13,4
2	44.149	47.122	6,7
3	67.703	50.008	-26,1
4	67.704	26.457	-60,9
5	71.711	32.235	-55,0
6	70.288	70.973	1,0
7	61.352	87.401	42,5
8	59.082	61.533	4,1
9	59.606	90.619	52,0
10	63.700	94.733	48,7
TOPLAM / TOTAL	596.778	588.354	-1,4

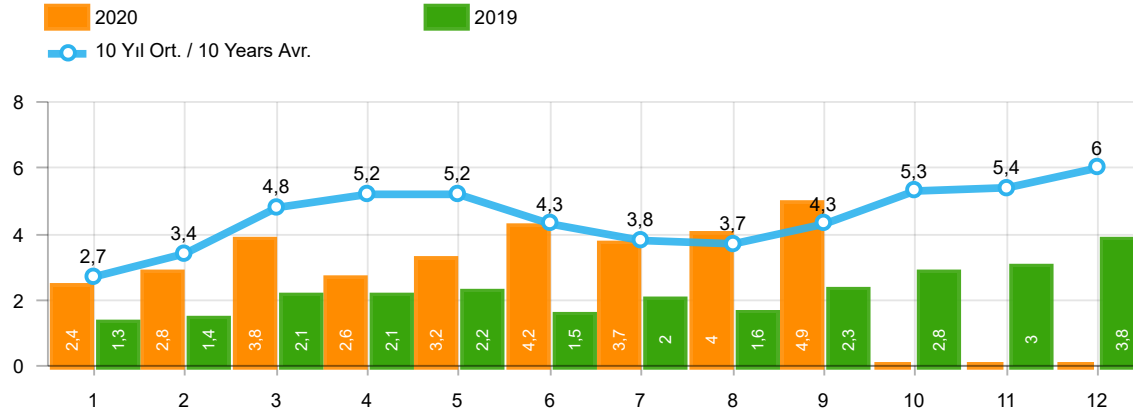
Yıl / Year	1	2	3	4	5	6	7	8	9	10	11	12	1-10 Toplam / Total	Toplam / Total	1-10 Yerli / Local	1-10 İthal / Import	İthal Oran / Import %
2010	20.095	31.172	51.769	54.946	59.377	60.896	61.345	61.764	63.814	73.404	73.962	148.369	538.582	760.913	218.506	320.076	59,4
2011	44.892	58.663	78.403	77.695	80.646	81.573	63.044	58.406	60.129	69.421	63.657	127.910	672.872	864.439	263.316	409.556	60,9
2012	29.545	41.324	64.884	62.949	70.863	71.067	62.304	58.148	69.629	59.938	71.710	115.400	590.651	777.761	211.642	379.009	64,2
2013	35.523	48.307	68.774	73.575	81.468	74.096	71.596	65.043	67.963	58.014	79.301	129.718	644.359	853.378	185.428	458.931	71,2
2014	32.670	35.021	47.581	53.305	58.121	60.163	59.907	60.199	66.531	66.573	80.621	146.989	540.071	767.681	171.421	368.650	68,3
2015	34.615	55.331	83.302	91.602	81.542	86.158	83.836	82.577	64.025	64.255	84.601	156.173	727.243	968.017	235.631	491.612	67,6
2016	32.713	52.825	82.948	84.887	93.904	91.540	58.533	71.556	67.593	83.000	122.309	141.912	719.499	983.720	220.764	498.735	69,3
2017	35.323	46.965	73.802	75.988	85.422	83.658	82.297	72.536	71.352	91.752	100.859	136.240	719.095	956.194	252.593	466.502	64,9
2018	35.076	47.009	76.345	71.126	72.755	51.037	52.734	34.346	23.028	21.571	58.204	77.706	485.027	620.937	179.889	305.138	62,9
2019	14.373	24.875	49.221	30.971	33.016	42.688	17.927	26.246	41.992	49.075	58.176	90.500	330.384	479.060	141.758	188.626	57,1
2020	27.273	47.122	50.008	26.457	32.235	70.973	87.401	61.533	90.619	94.733			588.354	588.354	264.591	323.763	55,0





Aylar / Months	10 Yıl Ort / 10 Years Avr.	2020	%
1	8.995	5.257	-41,6
2	11.750	9.395	-20,0
3	17.249	10.121	-41,3
4	16.790	4.632	-72,4
5	17.426	7.162	-58,9
6	16.537	13.906	-15,9
7	15.217	17.974	18,1
8	15.261	17.161	12,5
9	15.731	19.323	22,8
10	16.140	18.392	14,0
TOPLAM / TOTAL	151.096	123.323	-18,4

Yıl / Year	1	2	3	4	5	6	7	8	9	10	11	12	1-10 Toplam / Total	Toplam / Total	1-10 Yerli / Local	1-10 İthal / Import	İthal Oran / Import %
2010	7.501	10.521	17.811	18.397	18.910	18.810	19.946	19.542	21.337	25.545	23.901	48.908	178.320	251.129	106.909	71.411	40,0
2011	15.024	19.659	24.380	23.860	24.344	24.859	19.526	19.531	20.165	21.913	18.706	38.953	213.261	270.920	121.059	92.202	43,2
2012	8.468	12.135	17.614	17.304	20.403	20.218	17.773	16.912	20.269	16.498	19.413	34.474	167.594	221.481	95.720	71.874	42,9
2013	9.688	11.493	16.989	16.576	19.085	15.806	15.884	13.432	15.038	11.029	15.184	28.519	145.020	188.723	75.165	69.855	48,2
2014	8.302	7.854	9.769	10.536	11.742	12.885	13.305	15.068	17.269	15.759	20.926	36.935	122.489	180.350	62.700	59.789	48,8
2015	10.117	14.514	21.626	21.391	18.664	18.392	19.618	20.824	16.937	16.301	22.204	41.833	178.384	242.421	97.200	81.184	45,5
2016	9.355	12.237	18.973	19.269	20.072	20.429	12.967	17.579	16.253	19.254	26.526	33.868	166.388	226.782	86.895	79.493	47,8
2017	9.634	12.307	18.186	17.990	19.623	17.494	19.913	17.646	17.929	21.264	24.903	36.546	171.986	233.435	87.988	83.998	48,8
2018	8.465	11.108	16.547	16.018	15.528	9.812	10.710	7.370	5.433	4.762	12.000	16.863	105.753	134.616	53.194	52.559	49,7
2019	3.394	5.670	10.593	6.555	5.890	6.664	2.529	4.702	6.684	9.079	10.373	19.671	61.760	91.804	31.551	30.209	48,9
2020	5.257	9.395	10.121	4.632	7.162	13.906	17.974	17.161	19.323	18.392			123.323	123.323	77.601	45.722	37,1



Aylar / Months	10 Yıl Ort / 10 Years Avr.	2020	%
1	2.729	2.425	-11,1
2	3.442	2.778	-19,3
3	4.845	3.771	-22,2
4	5.152	2.606	-49,4
5	5.209	3.244	-37,7
6	4.304	4.173	-3,0
7	3.835	3.727	-2,8
8	3.730	3.974	6,6
9	4.272	4.928	15,4
TOPLAM / TOTAL	37.517	31.626	-15,7

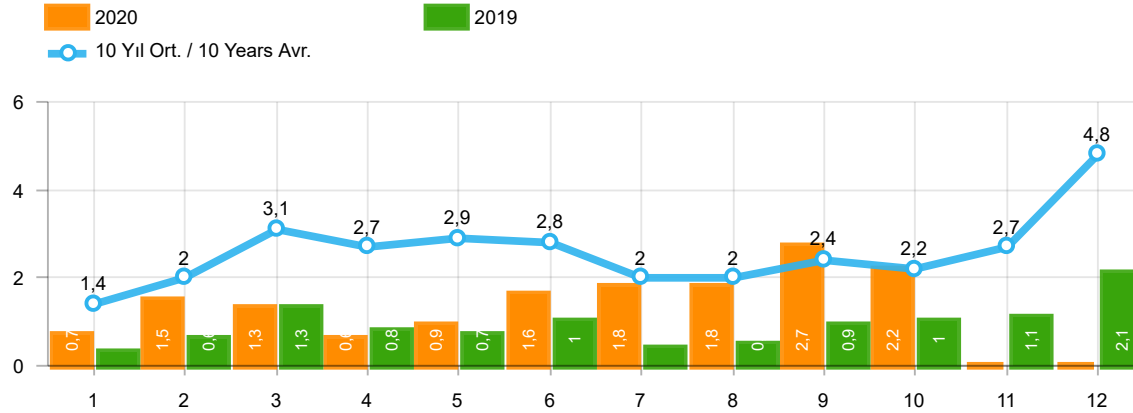
Yıl / Year	1	2	3	4	5	6	7	8	9	10	11	12	1-9 Toplam / Total	Toplam / Total
2010	1.111	1.991	2.330	3.039	2.567	2.638	1.965	3.019	2.806	4.424	3.978	6.168	21.466	36.036
2011	2.975	5.242	5.927	5.358	6.016	6.335	4.534	4.051	4.140	5.828	4.943	4.992	44.578	60.341
2012	2.362	1.983	4.348	6.579	6.273	4.569	3.837	3.158	3.618	4.027	4.807	4.757	36.727	50.318
2013	2.161	2.432	4.005	4.585	5.616	3.136	4.574	3.408	4.935	4.762	5.781	6.891	34.852	52.286
2014	2.169	3.512	4.476	4.905	5.094	5.028	4.233	4.920	5.619	5.743	6.250	7.409	39.956	59.358
2015	3.124	3.984	5.460	6.383	6.078	5.748	4.677	5.044	4.765	7.049	6.898	7.564	45.263	66.774
2016	3.739	4.731	7.067	6.546	6.575	5.543	3.833	5.134	4.945	7.372	7.090	7.603	48.113	70.178
2017	3.974	4.964	6.773	6.780	7.057	5.356	5.003	4.396	6.064	7.734	7.457	7.351	50.367	72.909
2018	4.362	4.179	5.925	5.216	4.584	3.146	3.654	2.587	3.541	3.698	3.578	3.886	37.194	48.356
2019	1.311	1.401	2.143	2.126	2.229	1.538	2.039	1.579	2.284	2.828	3.037	3.782	16.650	26.297
2020	2.425	2.778	3.771	2.606	3.244	4.173	3.727	3.974	4.928	-	-	-	31.626	31.626

Kaynak: TÜİK trafik kayıtları.

Rakamlar, son iki model yılına ait traktör tescillerinden oluşmaktadır.

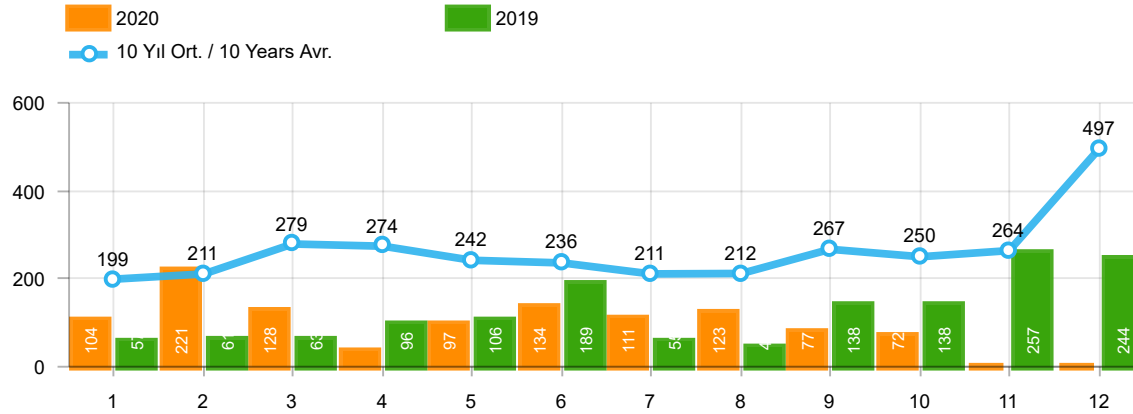
Source: Turkish Statistical Institute – Traffic registrations

Data represents the last two model year's farm tractors registration figures



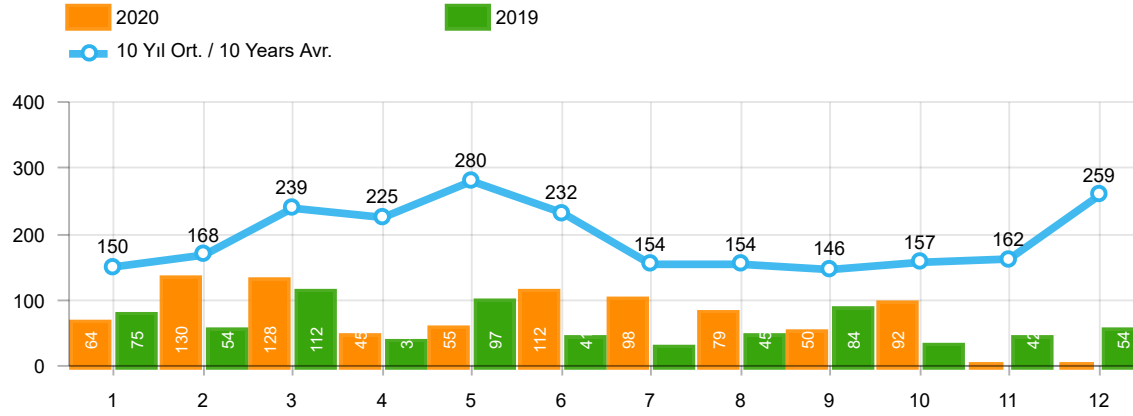
Aylar / Months	10 Yıl Ort. / 10 Years Avr.	2020	%
1	1.402	682	-51,4
2	1.955	1.475	-24,6
3	3.148	1.290	-59,0
4	2.692	628	-76,7
5	2.874	921	-68,0
6	2.764	1.570	-43,2
7	2.032	1.809	-11,0
8	1.976	1.835	-7,1
9	2.444	2.660	8,8
10	2.207	2.211	0,2
TOPLAM / TOTAL	23.493	15.081	-35,8

Yıl / Year	1	2	3	4	5	6	7	8	9	10	11	12	1-10 Toplam / Total	Toplam / Total	1-10 Yerli / Local	1-10 İthal / Import	İthal Oran / Import %
2010	768	960	1.950	1.949	2.140	2.314	2.403	2.754	2.864	3.001	3.231	6.158	21.103	30.492	14.946	6.157	29,2
2011	2.651	3.544	5.142	4.503	4.563	3.852	2.261	2.745	3.784	3.400	3.149	5.712	36.445	45.306	23.489	12.956	35,5
2012	1.703	2.454	3.866	3.209	3.678	3.540	2.750	2.403	3.296	2.497	3.154	5.300	29.396	37.850	20.071	9.325	31,7
2013	1.484	2.113	3.343	2.925	3.504	3.186	2.777	2.103	2.875	2.086	3.631	5.444	26.396	35.471	18.746	7.650	29,0
2014	1.522	2.065	3.094	3.224	3.727	3.726	2.578	2.783	3.708	2.858	3.384	6.869	29.285	39.538	20.972	8.313	28,4
2015	2.215	3.346	5.699	3.729	3.600	4.253	2.922	2.211	2.687	2.266	3.146	7.307	32.928	43.381	22.549	10.379	31,5
2016	1.167	1.648	2.515	2.319	2.711	2.623	984	1.796	1.438	2.238	2.485	3.127	19.439	25.051	13.230	6.209	31,9
2017	931	1.290	1.982	1.888	2.184	1.891	1.974	1.860	2.284	2.188	2.487	4.438	18.472	25.397	12.255	6.217	33,7
2018	1.237	1.552	2.630	2.328	1.909	1.272	1.235	603	653	488	905	1.695	13.907	16.507	8.185	5.722	41,1
2019	342	579	1.255	842	728	981	435	497	854	1.047	1.100	2.087	7.560	10.747	4.697	2.863	37,9
2020	682	1.475	1.290	628	921	1.570	1.809	1.835	2.660	2.211			15.081	15.081	9.719	5.362	35,6



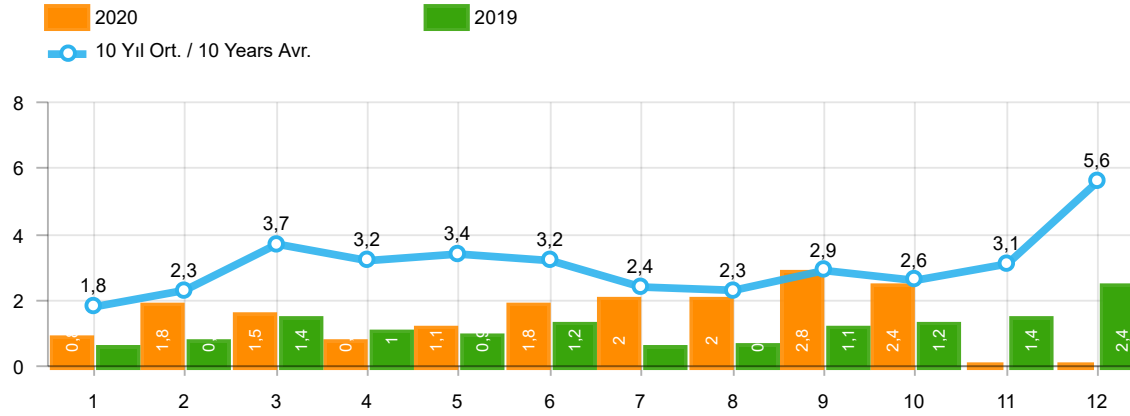
Aylar / Months	10 Yıl Ort. / 10 Years Avr.	2020	%
1	199	104	-47,6
2	211	221	4,8
3	279	128	-54,1
4	274	35	-87,2
5	242	97	-59,9
6	236	134	-43,1
7	211	111	-47,4
8	212	123	-42,1
9	267	77	-71,1
10	250	72	-71,2
TOPLAM / TOTAL	2.380	1.102	-53,7

Yıl / Year	1	2	3	4	5	6	7	8	9	10	11	12	1-10 Toplam / Total	Toplam / Total
2010	140	128	172	153	127	124	93	232	199	204	162	382	1.572	2.116
2011	124	167	267	260	241	233	205	280	270	230	168	525	2.277	2.970
2012	179	257	277	229	257	239	216	249	325	269	189	398	2.497	3.084
2013	191	268	289	276	283	241	367	235	305	392	415	697	2.847	3.959
2014	360	394	384	333	294	258	216	229	395	220	266	653	3.083	4.002
2015	280	322	451	561	372	405	389	253	316	394	325	621	3.743	4.689
2016	309	158	251	302	261	196	139	220	241	230	354	431	2.307	3.092
2017	212	211	227	231	272	156	250	235	318	268	317	594	2.380	3.291
2018	134	142	410	296	207	315	180	146	160	155	184	425	2.145	2.754
2019	57	61	63	96	106	189	55	44	138	138	257	244	947	1.448
2020	104	221	128	35	97	134	111	123	77	72			1.102	1.102



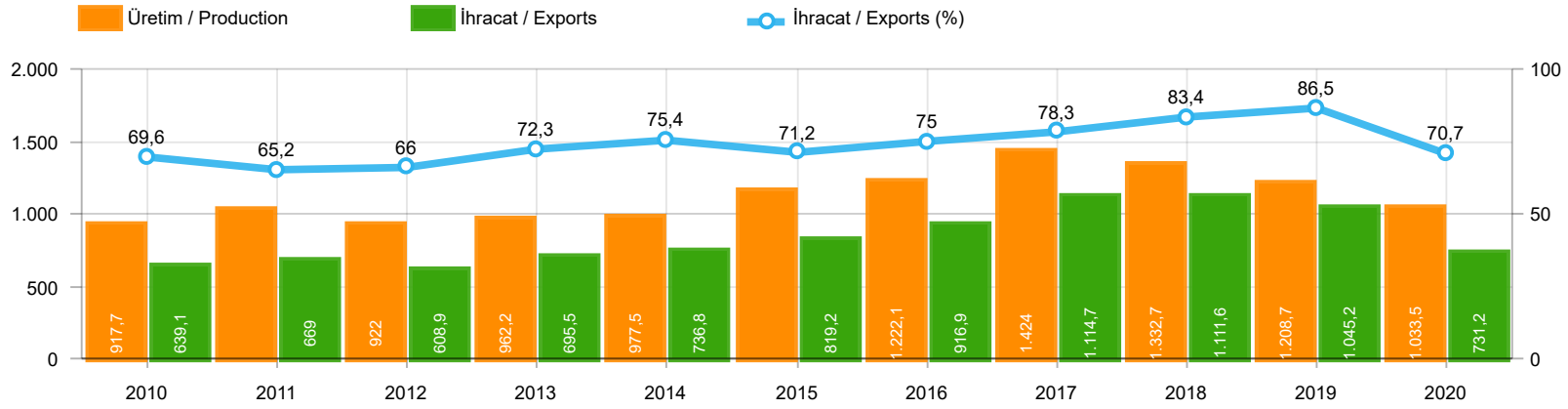
Aylar / Months	10 Yıl Ort / 10 Years Avr.	2020	%
1	150	64	-57,4
2	168	130	-22,6
3	239	128	-46,5
4	225	45	-80,0
5	280	55	-80,4
6	232	112	-51,8
7	154	98	-36,2
8	154	79	-48,7
9	146	50	-65,8
10	157	92	-41,5
11	162	1	-99,4
12	259	1	-99,6
TOPLAM / TOTAL	1.906	853	-55,3

Yıl / Year	1	2	3	4	5	6	7	8	9	10	11	12	1-10 Toplam / Total	Toplam / Total	1-10 Yerli / Local	1-10 İthal / Import	İthal Oran / Import %
2010	67	71	128	193	193	177	170	211	163	144	133	325	1.517	1.975	1.460	57	3,8
2011	92	212	233	324	412	334	148	214	130	176	176	321	2.275	2.772	2.191	84	3,7
2012	125	103	215	172	397	262	174	182	251	229	150	344	2.110	2.604	2.076	34	1,6
2013	365	445	537	489	580	520	412	281	245	198	123	189	4.072	4.384	4.045	27	0,7
2014	199	179	253	251	305	148	69	92	130	91	97	332	1.717	2.146	1.560	157	9,1
2015	146	222	313	290	290	255	211	203	153	171	359	363	2.254	2.976	2.185	69	3,1
2016	180	209	218	240	214	307	76	82	141	198	314	236	1.865	2.415	1.834	31	1,7
2017	174	119	167	124	188	115	206	187	92	231	109	235	1.603	1.947	1.589	14	0,9
2018	78	65	215	136	125	164	45	42	74	107	113	188	1.051	1.352	1.040	11	1,0
2019	75	54	112	35	97	41	25	45	84	28	42	54	596	692	596	-	-
2020	64	130	128	45	55	112	98	79	50	92			853	853	853	-	-



Aylar / Months	10 Yıl Ort / 10 Years Avr.	2020	%
1	1.751	850	-51,4
2	2.334	1.826	-21,8
3	3.666	1.546	-57,8
4	3.191	708	-77,8
5	3.397	1.073	-68,4
6	3.232	1.816	-43,8
7	2.397	2.018	-15,8
8	2.342	2.037	-13,0
9	2.857	2.787	-2,5
10	2.614	2.375	-9,2
TOPLAM / TOTAL	27.779	17.036	-38,7

Yıl / Year	1	2	3	4	5	6	7	8	9	10	11	12	1-10 Toplam / Total	Toplam / Total	1-10 Yerli / Local	1-10 İthal / Import	İthal Oran / Import %
2010	975	1.159	2.250	2.295	2.460	2.615	2.666	3.197	3.226	3.349	3.526	6.865	24.192	34.583	17.978	6.214	25,7
2011	2.867	3.923	5.642	5.087	5.216	4.419	2.614	3.239	4.184	3.806	3.493	6.558	40.997	51.048	27.957	13.040	31,8
2012	2.007	2.814	4.358	3.610	4.332	4.041	3.140	2.834	3.872	2.995	3.493	6.042	34.003	43.538	24.644	9.359	27,5
2013	2.040	2.826	4.169	3.690	4.367	3.947	3.556	2.619	3.425	2.676	4.169	6.330	33.315	43.814	25.638	7.677	23,0
2014	2.081	2.638	3.731	3.808	4.326	4.132	2.863	3.104	4.233	3.169	3.747	7.854	34.085	45.686	25.615	8.470	24,8
2015	2.641	3.890	6.463	4.580	4.262	4.913	3.522	2.667	3.156	2.831	3.830	8.291	38.925	51.046	28.477	10.448	26,8
2016	1.656	2.015	2.984	2.861	3.186	3.126	1.199	2.098	1.820	2.666	3.153	3.794	23.611	30.558	17.371	6.240	26,4
2017	1.317	1.620	2.376	2.243	2.644	2.162	2.430	2.282	2.694	2.687	2.913	5.267	22.455	30.635	16.224	6.231	27,7
2018	1.449	1.759	3.255	2.760	2.241	1.751	1.460	791	887	750	1.202	2.308	17.103	20.613	11.370	5.733	33,5
2019	474	694	1.430	973	931	1.211	515	586	1.076	1.213	1.399	2.385	9.103	12.887	6.240	2.863	31,5
2020	850	1.826	1.546	708	1.073	1.816	2.018	2.037	2.787	2.375			17.036	17.036	11.674	5.362	31,5



	2010	2011	2012	2013	2014	2015	2016	2017	2018	2019	2020
<b>İhracat/Export</b>	639.064	669.023	608.928	695.511	736.829	819.187	916.873	1.114.658	1.111.645	1.045.201	731.158
<b>Üretim/Production</b>	917.703	1.025.358	922.035	962.173	977.511	1.150.359	1.222.078	1.424.042	1.332.726	1.208.668	1.033.485
<b>İhracat/Exports (%)</b>	69,6	65,2	66	72,3	75,4	71,2	75	78,3	83,4	86,5	70,7

**Taşıt Araçları İhracatı (2018 - 2020)**  
Motor Vehicle Exports (2018 - 2020)

SEKTÖR / SECTOR	2018	2019	1/10-2019	1/10-2020	2020/2019 %
OTOMOBİL / Pass.Car	875.147	828.744	676.486	480.702	-28,9
<b>OTOMOBİL TOPLAM / Pass. Car Total</b>	<b>875.147</b>	<b>828.744</b>	<b>676.486</b>	<b>480.702</b>	<b>-28,9</b>
KAMYON / Truck	14.478	14.824	13.457	8.174	-39,2
KAMYONET / Pick Up	372.954	349.490	291.883	196.367	-32,7
OTOBÜS / Bus	7.708	9.001	7.512	5.659	-24,7
MİNİBÜS / Minibus	47.736	49.283	40.923	28.843	-29,5
MİDİBÜS / Midibus	846	1.244	1.034	463	-55,2
<b>TİCARİ ARAÇLAR TOPLAM / Commercial Vehicle Total</b>	<b>443.722</b>	<b>423.842</b>	<b>354.809</b>	<b>239.506</b>	<b>-32,5</b>
<b>TAŞIT ARAÇLARI TOPLAM / Motor Vehicles Total</b>	<b>1.318.869</b>	<b>1.252.586</b>	<b>1.031.295</b>	<b>720.208</b>	<b>-30,2</b>
TRAKTÖR / F.Tractor	15.123	15.844	13.906	10.950	-21,3
<b>TRAKTÖR TOPLAM / F.Tractor Total</b>	<b>15.123</b>	<b>15.844</b>	<b>13.906</b>	<b>10.950</b>	<b>-21,3</b>
<b>GENEL TOPLAM / GRAND TOTAL</b>	<b>1.333.992</b>	<b>1.268.430</b>	<b>1.045.201</b>	<b>731.158</b>	<b>-30,0</b>

**Üretici Bazında İhracat (adet)**  
Exports by Manufacturer (unit)

Üreticiler / Manufacturers	2018	2019	1-10 / 2019	1-10 / 2020
A.I.O.S.	964	1.433	1.188	416
FORD OTOSAN	328.502	333.734	275.690	190.125
HATTAT TRAKTÖR	621	637	556	559
HONDA TÜRKİYE	13.699	7.528	6.507	5.915
HYUNDAI ASSAN	190.347	169.803	138.507	107.903
KARSAN	3.419	2.713	1.779	492
M. BENZ TÜRK	16.309	16.324	15.023	9.026
MAN TÜRKİYE	2.425	2.892	2.382	2.212
OTOKAR	901	1.156	975	616
OYAK RENAULT	280.411	295.275	234.569	169.990
TEMSA	645	602	521	179
TOFAŞ	243.796	194.107	168.230	91.508
TOYOTA	237.451	227.019	185.924	141.826
TÜRK TRAKTÖR	14.502	15.207	13.350	10.391
<b>GENEL TOPLAM / Grand Total</b>	<b>1.333.992</b>	<b>1.268.430</b>	<b>1.045.201</b>	<b>731.158</b>



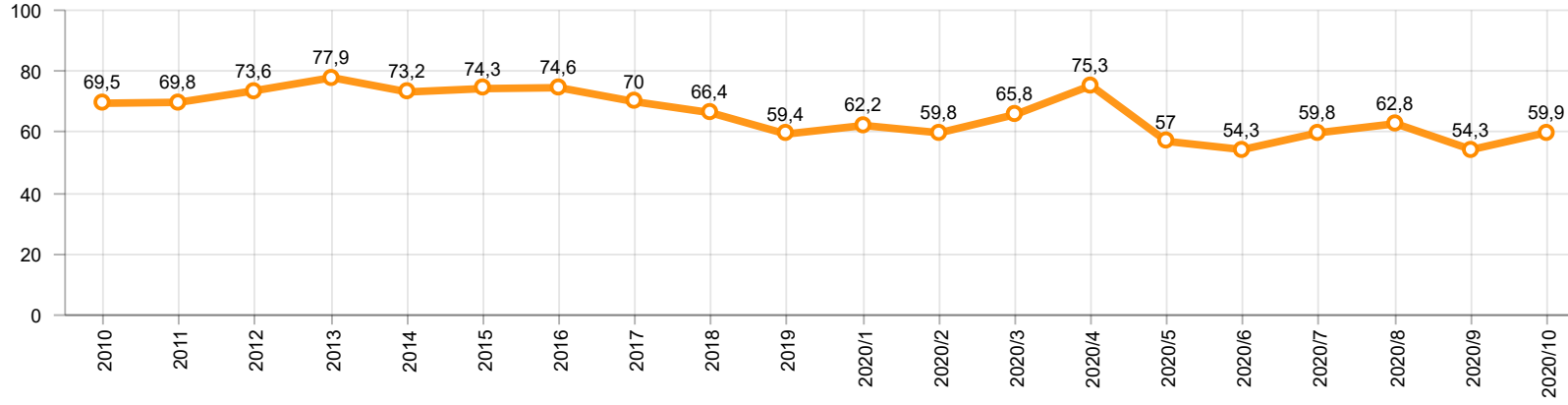
**Otomotiv Ana ve Yan Sanayii İhracatı (ABD \$)**  
CBU and CKD Exports - \$

Sektör / Sector	2018	2019	OCAK - EKİM / January - October 2019	OCAK - EKİM / January - October 2020	2020 / 2019 %
<b>Toplam Yan Sanayi / Total Component Industry</b>	<b>10.878.550.618</b>	<b>10.617.878.409</b>	<b>8.910.286.192,7</b>	<b>7.587.469.952,45</b>	<b>-14,8</b>
İç ve Dış Lastik / Tyres	1.353.862.295	1.479.469.475	1.272.270.238,99	1.036.160.996,39	-18,6
Emniyet Camı / Safety Glasses	151.148.111	150.706.975	124.683.535,83	111.562.921,35	-10,5
Motor / Engine	581.983.113	518.051.731	431.018.073,26	404.861.402,28	-6,1
Akümülatör / Batteries	387.879.636	397.638.079	319.964.686,1	274.416.817,24	-14,2
Diğer Aksam ve Parça / Spare Parts&Components	8.403.677.463	8.072.012.149	6.762.349.658,52	5.760.467.815,19	-14,8
<b>Toplam Ana Sanayi / Total Vehicle Industry</b>	<b>21.349.203.156</b>	<b>20.613.852.926</b>	<b>16.973.648.694,99</b>	<b>12.789.325.029,24</b>	<b>-24,7</b>
Otobüs / Bus	1.503.156.428	1.759.421.232	1.461.516.892,28	1.055.061.097,35	-27,8
Midibüs-Minibüs / Midibus-Minibus	215.450.022	222.922.952	171.990.129,15	160.725.464,73	-6,5
Otomobil / P.Cars	12.420.951.066	11.864.837.779	9.575.446.413,06	7.313.799.355,36	-23,6
Kamyon-Kamyonet / Truck-Pick Up&Van	5.375.329.018	4.945.381.202	4.153.999.546,56	3.121.757.719,71	-24,8
Römork ve Yarı Römork / Trailer-Semi Trailer	507.223.886	503.258.885	425.877.544,61	331.957.896,57	-22,1
Çekici / Tractor	904.738.051	839.891.843	785.651.947,38	477.027.816,94	-39,3
Tarım Traktörü / Farm Tractor	422.354.685	478.139.033	399.166.221,95	328.995.678,58	-17,6
<b>Toplam / Total</b>	<b>32.227.753.774</b>	<b>31.231.731.335</b>	<b>25.883.934.887,69</b>	<b>20.376.794.981,69</b>	<b>-21,3</b>

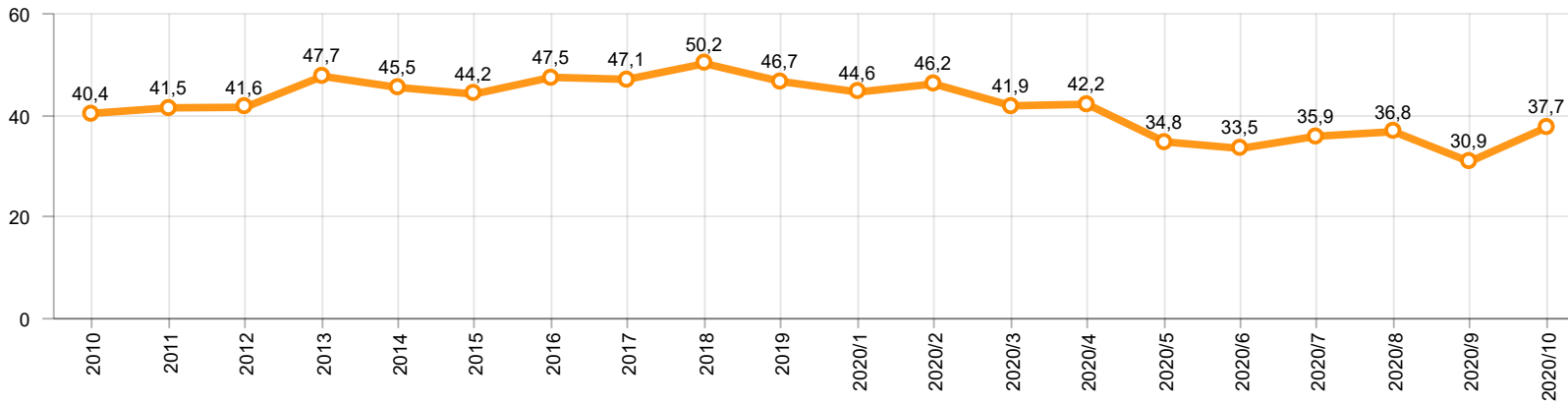
Kaynak: Uludağ İhracatçı Birlikleri . ÜİB tarafından OSD için özel olarak analiz edilen Otomotiv İhracatı kapsamında; ÜİB Türkiye Geneli Otomotiv Endüstrisi sınıflandırmasına kıyasla “Römork ve Yarı Römork” , “Tarım Traktörü” verileri dahil edilmekte; “Kullanılmış Araçlar” ,”İki Tekerlekli Taşıtlar” , “Demiryolu Taşıtları” hariç tutulmaktadır.

Source: Uludağ Exporters Association – Special Analyze for OSD.Compared to Turkish General Automotive Industry classification, this special analyze includes; farms tractors, trailers and semi-trailers, does not include; used vehicles, two-wheeled vehicles and railway vehicles

**Otomobil Pazarında İthalatın Payı (%)**  
**Import Share in P.Car Market (%)**



**Hafif Ticari Araçlar Pazarında İthalatın Payı (%)**  
**Import Share in LCV Market (%)**



Araç Tipleri / Vehicle Types	1	2	3	4	5	6	7	8	9	10	11	12	Toplam / Total
<b>OTOMOBİL - Pass.Car</b>	<b>60.438</b>	<b>73.844</b>	<b>57.326</b>	<b>9.327</b>	<b>31.849</b>	<b>48.853</b>	<b>52.088</b>	<b>26.393</b>	<b>56.927</b>	<b>63.657</b>			<b>480.702</b>
KAMYON - H. Truck	202	942	1.137	295	588	934	1.013	996	879	1.170			8.156
K.KAMYON - L. Truck	-	-	-	-	-	-	-	-	-	18			18
KAMYONET - Pick Up	25.435	24.356	21.081	882	9.461	17.524	21.102	12.858	29.427	34.241			196.367
OTOBÜS - Bus	551	696	593	91	418	829	604	459	814	604			5.659
MİNİBÜS - Minibus	3.305	2.709	3.552	-	2.058	2.605	3.340	2.132	4.760	4.382			28.843
MİDİBÜS - Midibus	31	68	82	18	32	64	95	27	25	21			463
<b>TİCARİ ARAÇLAR TOPLAMI - CV Total</b>	<b>29.524</b>	<b>28.771</b>	<b>26.445</b>	<b>1.286</b>	<b>12.557</b>	<b>21.956</b>	<b>26.154</b>	<b>16.472</b>	<b>35.905</b>	<b>40.436</b>			<b>239.506</b>
<b>TAŞIT ARAÇLARI TOPLAMI - MV Total</b>	<b>89.962</b>	<b>102.615</b>	<b>83.771</b>	<b>10.613</b>	<b>44.406</b>	<b>70.809</b>	<b>78.242</b>	<b>42.865</b>	<b>92.832</b>	<b>104.093</b>			<b>720.208</b>
TRAKTÖR - F.Tractor	1.468	1.181	994	384	680	1.421	1.322	926	1.144	1.430			10.950
<b>GENEL TOPLAM - Grand Total</b>	<b>91.430</b>	<b>103.796</b>	<b>84.765</b>	<b>10.997</b>	<b>45.086</b>	<b>72.230</b>	<b>79.564</b>	<b>43.791</b>	<b>93.976</b>	<b>105.523</b>			<b>731.158</b>

**Otomobil / P.Car**

Firmalar / Firms	1	2	3	4	5	6	7	8	9	10	11	12	Toplam / Total
FORD OTOSAN	583	867	505	-	405	632	639	246	1.013	999	-	-	5.889
HONDA TÜRKİYE	1.087	1.566	1.009	28	117	755	341	743	58	211	-	-	5.915
HYUNDAI ASSAN	10.700	14.160	13.138	5.123	9.923	12.200	9.287	12.932	10.001	10.439	-	-	107.903
OYAK RENAULT	18.323	24.729	24.536	3.021	14.036	17.391	20.319	4.418	18.085	25.132	-	-	169.990
TOFAŞ	7.835	10.136	5.249	1.155	648	1.978	5.541	2.943	6.905	6.789	-	-	49.179
TOYOTA	21.910	22.386	12.889	-	6.720	15.897	15.961	5.111	20.865	20.087	-	-	141.826
<b>TOPLAM - Total</b>	<b>60.438</b>	<b>73.844</b>	<b>57.326</b>	<b>9.327</b>	<b>31.849</b>	<b>48.853</b>	<b>52.088</b>	<b>26.393</b>	<b>56.927</b>	<b>63.657</b>	-	-	<b>480.702</b>

**Kamyonet / Pick-up**

Firmalar / Firms	1	2	3	4	5	6	7	8	9	10	11	12	Toplam / Total
A.I.O.S.	-	-	-	-	-	-	-	-	-	-	-	-	-
FORD OTOSAN	20.932	16.627	17.047	125	9.411	14.188	15.344	10.124	22.770	27.095	-	-	153.663
KARSAN	37	-	2	-	8	34	22	44	86	-	-	-	233
OTOKAR	22	-	-	46	-	22	-	18	-	34	-	-	142
TOFAŞ	4.444	7.729	4.032	711	42	3.280	5.736	2.672	6.571	7.112	-	-	42.329
<b>TOPLAM - Total</b>	<b>25.435</b>	<b>24.356</b>	<b>21.081</b>	<b>882</b>	<b>9.461</b>	<b>17.524</b>	<b>21.102</b>	<b>12.858</b>	<b>29.427</b>	<b>34.241</b>	-	-	<b>196.367</b>

**Minibüs / Minibus**

Firmalar / Firms	1	2	3	4	5	6	7	8	9	10	11	12	Toplam / Total
FORD OTOSAN	3.303	2.708	3.552	-	2.055	2.593	3.337	2.132	4.759	4.381	-	-	28.820
KARSAN	2	1	-	-	3	12	3	-	1	1	-	-	23
<b>TOPLAM - Total</b>	<b>3.305</b>	<b>2.709</b>	<b>3.552</b>	<b>-</b>	<b>2.058</b>	<b>2.605</b>	<b>3.340</b>	<b>2.132</b>	<b>4.760</b>	<b>4.382</b>	-	-	<b>28.843</b>

**Kamyon / Truck**

Firmalar / Firms	1	2	3	4	5	6	7	8	9	10	11	12	Toplam / Total
A.I.O.S.	-	-	-	-	-	-	-	-	-	18	-	-	18
FORD OTOSAN	145	192	119	92	132	235	175	173	186	304	-	-	1.753
KARSAN	-	-	-	-	-	-	-	-	-	-	-	-	-
M. BENZ TÜRK	57	750	1.018	203	456	699	838	823	693	866	-	-	6.403
OTOKAR	-	-	-	-	-	-	-	-	-	-	-	-	-
<b>TOPLAM - Total</b>	<b>202</b>	<b>942</b>	<b>1.137</b>	<b>295</b>	<b>588</b>	<b>934</b>	<b>1.013</b>	<b>996</b>	<b>879</b>	<b>1.188</b>	<b>-</b>	<b>-</b>	<b>8.174</b>

**Midibüs / Midibus**

Firmalar / Firms	1	2	3	4	5	6	7	8	9	10	11	12	Toplam / Total
A.I.O.S.	16	42	76	15	16	43	34	17	8	8	-	-	275
KARSAN	-	-	-	-	7	4	15	-	4	5	-	-	35
OTOKAR	15	20	5	3	8	16	42	2	11	8	-	-	130
TEMSA	-	6	1	-	1	1	4	8	2	-	-	-	23
<b>TOPLAM - Total</b>	<b>31</b>	<b>68</b>	<b>82</b>	<b>18</b>	<b>32</b>	<b>64</b>	<b>95</b>	<b>27</b>	<b>25</b>	<b>21</b>	<b>-</b>	<b>-</b>	<b>463</b>

**Otobüs / Bus**

Firmalar / Firms	1	2	3	4	5	6	7	8	9	10	11	12	Toplam / Total
A.I.O.S.	6	15	26	-	12	23	-	4	24	13	-	-	123
KARSAN	-	-	23	-	-	30	42	27	54	25	-	-	201
M. BENZ TÜRK	231	380	230	53	153	401	245	229	380	321	-	-	2.623
MAN TÜRKİYE	288	284	269	3	218	270	281	161	272	166	-	-	2.212
OTOKAR	19	15	29	34	16	79	32	23	51	46	-	-	344
TEMSA	7	2	16	1	19	26	4	15	33	33	-	-	156
<b>TOPLAM - Total</b>	<b>551</b>	<b>696</b>	<b>593</b>	<b>91</b>	<b>418</b>	<b>829</b>	<b>604</b>	<b>459</b>	<b>814</b>	<b>604</b>	<b>-</b>	<b>-</b>	<b>5.659</b>

**Traktör / F.Tractor**

Firmalar / Firms	1	2	3	4	5	6	7	8	9	10	11	12	Toplam / Total
HATTAT TRAKTÖR	120	84	22	38	25	53	65	67	56	29	-	-	559
TÜRK TRAKTÖR	1.348	1.097	972	346	655	1.368	1.257	859	1.088	1.401	-	-	10.391
<b>TOPLAM - Total</b>	<b>1.468</b>	<b>1.181</b>	<b>994</b>	<b>384</b>	<b>680</b>	<b>1.421</b>	<b>1.322</b>	<b>926</b>	<b>1.144</b>	<b>1.430</b>	<b>-</b>	<b>-</b>	<b>10.950</b>

Firmalar / Firms	2019 Toplam / Total	1	2	3	4	5	6	7	8	9	10	11	12	Toplam / Total
Alfa Romeo	253	2	-	5	-	12	11	8	29	46	32	-	-	145
Aston Martin	18	1	2	1	-	2	1	1	5	1	1	-	-	15
Audi	10.024	461	733	995	613	321	2.211	4.076	2.617	1.413	2.174	-	-	15.614
Bentley	9	-	1	-	3	2	3	-	-	1	-	-	-	10
BMW	9.583	251	815	1.168	373	191	882	1.412	2.124	1.314	1.597	-	-	10.127
Citroen	8.827	584	1.534	1.126	1.413	1.680	2.644	1.698	905	2.479	2.769	-	-	16.832
Dacia	17.533	2.261	1.851	1.245	601	787	3.033	4.282	930	2.047	2.852	-	-	19.889
DS	269	10	101	38	34	29	26	80	52	66	131	-	-	567
Ferrari	20	1	3	2	-	2	3	2	2	-	2	-	-	17
Fiat	1.043	7	22	79	21	39	154	102	131	144	187	-	-	886
Ford	12.484	206	862	2.042	1.032	604	1.111	3.098	2.080	2.563	2.864	-	-	16.462
Honda	3.108	101	172	160	96	227	152	298	267	174	185	-	-	1.832
Hyundai	15.460	950	1.385	1.261	574	732	1.790	2.465	2.225	2.471	2.167	-	-	16.020
Jaguar	244	-	47	24	6	9	13	7	15	5	23	-	-	149
Jeep	2.123	196	330	504	40	91	367	713	279	582	460	-	-	3.562
Kia	4.987	325	1.140	565	314	565	1.278	1.379	1.317	1.718	1.834	-	-	10.435
Lamborghini	9	-	1	2	1	3	1	3	2	3	-	-	-	16
Land Rover	1.371	8	151	206	237	135	112	134	128	78	210	-	-	1.399
Lexus	85	7	7	7	7	12	17	22	14	3	16	-	-	112
Maserati	45	-	2	-	1	4	5	6	4	6	2	-	-	30
Mazda	417	11	7	10	6	15	12	20	16	8	18	-	-	123
Mercedes-Benz	9.862	504	1.239	1.170	944	862	1.355	1.257	1.229	1.101	1.474	-	-	11.135
Mini	1.254	28	82	168	60	26	101	37	191	165	190	-	-	1.048
Mitsubishi	747	29	21	16	16	52	360	273	78	131	158	-	-	1.134
Nissan	11.980	757	275	548	188	310	246	770	2.160	2.854	2.238	-	-	10.346
Opel	16.689	554	1.768	2.726	2.044	1.770	2.913	4.233	803	4.524	4.071	-	-	25.406
Peugeot	23.057	1.338	2.440	2.540	3.792	2.473	2.661	2.929	1.341	2.521	5.327	-	-	27.362
Porsche	361	11	36	19	17	14	24	42	11	58	83	-	-	315
Renault	9.410	185	715	968	393	451	709	1.229	241	681	1.575	-	-	7.147
Seat	5.914	578	1.199	1.036	532	442	694	1.567	1.417	1.658	1.035	-	-	10.158
Skoda	15.369	884	1.570	1.303	313	374	3.205	2.599	1.839	3.662	3.284	-	-	19.033
Smart	44	12	16	8	3	2	4	2	-	-	2	-	-	49
Ssangyong	111	23	33	1	5	-	139	1	72	75	90	-	-	439
Subaru	662	17	59	84	22	43	87	83	96	47	54	-	-	592
Suzuki	2.381	22	124	173	181	134	535	275	175	177	440	-	-	2.236
Toyota	1.350	30	85	479	70	117	209	280	119	34	80	-	-	1.503
Volkswagen	38.820	3.292	3.469	5.164	2.108	1.408	3.444	4.589	4.459	5.393	7.006	-	-	40.332
Volvo	4.155	44	256	397	383	357	502	1.545	507	486	1.087	-	-	5.564
<b>GENEL TOPLAM - Grand Total</b>	<b>230.078</b>	<b>13.690</b>	<b>22.553</b>	<b>26.240</b>	<b>16.443</b>	<b>14.297</b>	<b>31.014</b>	<b>41.517</b>	<b>27.880</b>	<b>38.689</b>	<b>45.718</b>	<b>-</b>	<b>-</b>	<b>278.041</b>

Firmalar / Firms	2019 Toplam / Total	1	2	3	4	5	6	7	8	9	10	11	12	Toplam / Total
<b>Citroen</b>	<b>3.206</b>	250	341	434	133	44	182	411	600	949	664	-	-	<b>4.008</b>
<b>Dacia</b>	<b>2.473</b>	271	352	474	120	272	332	125	54	501	605	-	-	<b>3.106</b>
<b>Fiat</b>	<b>1.767</b>	176	350	252	106	131	639	795	422	233	293	-	-	<b>3.397</b>
<b>Ford</b>	<b>1.198</b>	50	71	63	161	241	107	72	115	170	1.030	-	-	<b>2.080</b>
<b>Hyundai</b>	<b>1.114</b>	55	96	54	29	59	42	-	108	63	118	-	-	<b>624</b>
<b>Isuzu</b>	<b>75</b>	2	3	1	1	13	24	4	1	-	-	-	-	<b>49</b>
<b>Iveco</b>	<b>1.326</b>	64	83	104	62	79	164	129	183	169	265	-	-	<b>1.302</b>
<b>Kia</b>	<b>1.355</b>	5	4	144	45	118	175	83	264	266	198	-	-	<b>1.302</b>
<b>Mercedes-Benz</b>	<b>5.074</b>	219	480	372	213	263	520	433	628	518	557	-	-	<b>4.203</b>
<b>Mitsubishi</b>	<b>1.880</b>	99	146	160	185	174	379	1.084	1.185	550	371	-	-	<b>4.333</b>
<b>Nissan</b>	<b>1.087</b>	66	92	59	22	47	56	2	1	-	-	-	-	<b>345</b>
<b>Opel</b>	<b>1.370</b>	51	33	298	99	49	231	336	303	394	380	-	-	<b>2.174</b>
<b>Peugeot</b>	<b>5.804</b>	418	555	495	168	260	317	431	396	689	1.376	-	-	<b>5.105</b>
<b>Renault</b>	<b>4.309</b>	171	228	117	90	219	314	271	115	134	196	-	-	<b>1.855</b>
<b>Ssangyong</b>	<b>260</b>	19	21	36	19	18	61	39	7	13	52	-	-	<b>285</b>
<b>Toyota</b>	<b>939</b>	25	34	70	23	96	103	90	58	215	174	-	-	<b>888</b>
<b>Volkswagen</b>	<b>9.676</b>	403	1.456	1.103	479	412	1.018	2.151	1.878	1.107	659	-	-	<b>10.666</b>
<b>GENEL TOPLAM - Grand Total</b>	<b>42.913</b>	<b>2.344</b>	<b>4.345</b>	<b>4.236</b>	<b>1.955</b>	<b>2.495</b>	<b>4.664</b>	<b>6.456</b>	<b>6.318</b>	<b>5.971</b>	<b>6.938</b>	-	-	<b>45.722</b>