



OTOMOTİV SANAYİİ DERNEĞİ
AUTOMOTIVE MANUFACTURERS ASSOCIATION

OTOMOTİV SEKTÖRÜ AYLIK DEĞERLENDİRME RAPORU EKİM 2018

AUTOMOTIVE INDUSTRY MONTHLY REPORT
October 2018

OSD "OICA" Üyesidir



OSD is a Member of "OICA"

2018 EKİM Ayı Özeti
2018 October Summary

	10 - 2017	10 - 2018	%	1 - 10 / 2017	1 - 10 / 2018	%	11/2016 - 10/2017	11/2017 - 10/2018	%
Otomobil Üretimi/P.Cars Production	102.365	89.151	-12,9	941.359	858.638	-8,8	1.153.059	1.060.185	-8,1
Toplam Üretim/Total Production	156.261	131.231	-16,0	1.380.126	1.298.282	-5,9	1.686.922	1.613.887	-4,3
Otomobil Pazarı/P.Cars Market	70.488	16.809	-76,2	547.109	379.274	-30,7	750.936	554.924	-26,1
Toplam Pazar/Total Market	94.439	22.315	-76,4	741.550	502.156	-32,3	1.012.718	747.435	-26,2
Otomobil İthalatı/P.Cars Import	50.676	11.136	-78,0	382.504	252.579	-34,0	528.307	376.043	-28,8
Toplam İthalat/Total Import	61.620	13.950	-77,4	472.733	310.897	-34,2	649.026	462.651	-28,7
Otomobil İhracatı/P.Cars Export	79.904	87.359	9,3	769.095	732.142	-4,8	939.837	884.401	-5,9
Toplam İhracat/Total Export	118.870	127.062	6,9	1.103.344	1.099.323	-0,4	1.339.288	1.328.773	-0,8
Otomobil İhracatı(\$)/P.Cars Export (\$)	1.084.581.228	1.190.817.177	9,8	9.727.491.849	10.327.167.896	6,2	11.765.118.973	12.390.253.807	5,3
Toplam İhracat(\$)/Total Export (\$)*	2.681.494.964	2.980.556.964	11,2	23.852.649.651	26.899.738.148	12,8	28.496.094.809	32.140.336.477	12,8

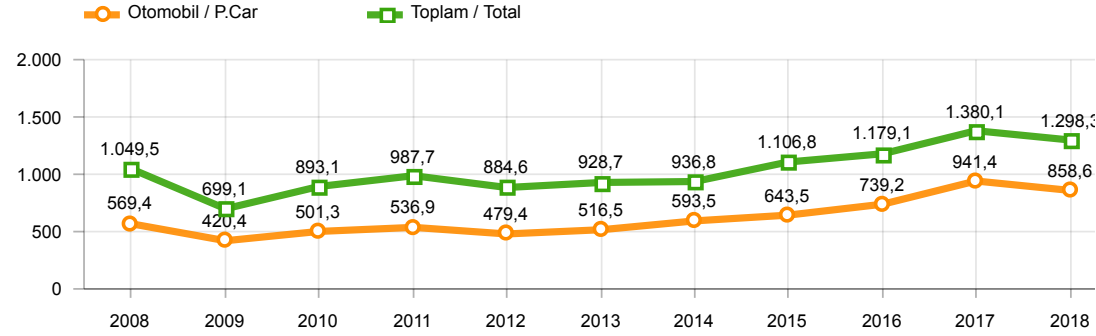
Parametreler/Parameters	10 - 2017	10 - 2018	%	1 - 10 / 2017	1 - 10 / 2018	%	11/2016 - 10/2017	11/2017 - 10/2018	%
ÜFE / PPI	1,7	0,9	-	11,7	40,2	-	14,5	23,7	-
TÜFE / CPI	2,1	2,7	-	9,5	22,6	-	10,4	14,9	-
Sanayi Endeksi / Industry Index	1,7	0,2	-	12,4	37,4	-	16,3	24,1	-
Dolar \$ **	3,7	5,7	55,9	3,6	4,7	30,8	3,5	4,5	28,2
Euro € **	4,3	6,6	53,1	4,0	5,5	38,3	3,9	5,4	36,6
Japon Yeni ¥ **	3,2	5,0	55,2	3,2	4,2	32,8	3,1	4,1	29,8

*Toplam Sanayi / Total Industry Including Components

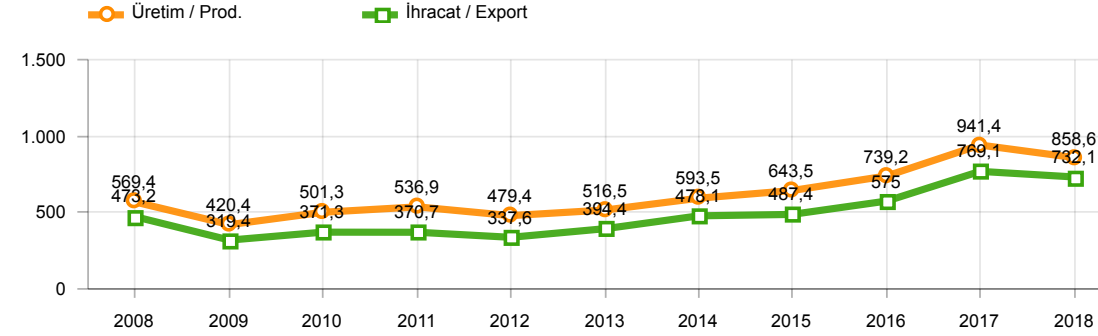
** Ortalama Değerler / Average Values

Araç Tipleri / Types	10 / 2017	10 / 2018	10 % Değişim	1-10 / 2017	1-10 / 2018	1-10 % Değişim
OTOMOBİL / Pass.Car	102.365	89.151	-12,9	941.359	858.638	-8,8
OTOMOBİL Toplam / Pass.Car Total	102.365	89.151	-12,9	941.359	858.638	-8,8
B.KAMYON / H. Truck	1.856	1.732	-6,7	14.725	20.385	38,4
K.KAMYON / L. Truck	604	61	-89,9	3.065	2.275	-25,8
KAMYONET / Pick Up	44.596	33.698	-24,4	365.961	361.454	-1,2
OTOBÜS / Bus	591	747	26,4	7.021	6.948	-1,0
MİNİBÜS / Minibus	5.856	5.624	-4,0	45.223	45.636	0,9
MİDİBÜS / Midibus	393	218	-44,5	2.772	2.946	6,3
TİCARİ ARAÇLAR Toplam / Commercial Vehicles Total	53.896	42.080	-21,9	438.767	439.644	0,2
TAŞIT ARAÇLARI Toplam / Motor Vehicles Total	156.261	131.231	-16,0	1.380.126	1.298.282	-5,9
TRAKTÖR / F.Tractor	5.182	1.768	-65,9	43.916	34.444	-21,6
TRAKTÖR Toplam / F.Tractor Total	5.182	1.768	-65,9	43.916	34.444	-21,6
GENEL TOPLAM / Grand Total	161.443	132.999	-17,6	1.424.042	1.332.726	-6,4

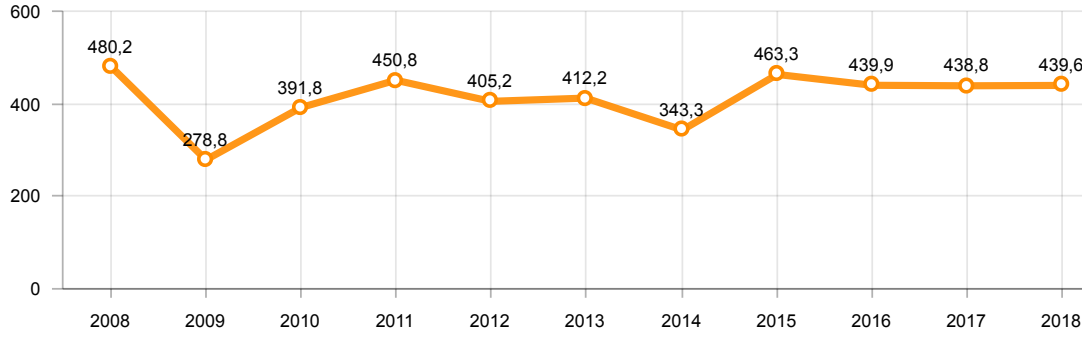
Toplam Üretim ve Otomobil Üretimi (x1000)(OCAK - EKİM)
Total & P.Cars Production (x1000)(January - October)



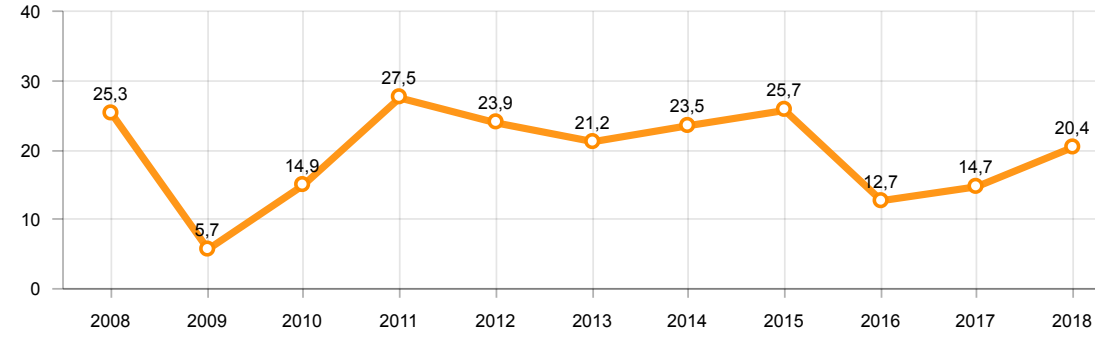
Otomobil Üretimi ve İhracat (x1000)(OCAK - EKİM)
P.Cars Production & Exports (x1000)(January - October)



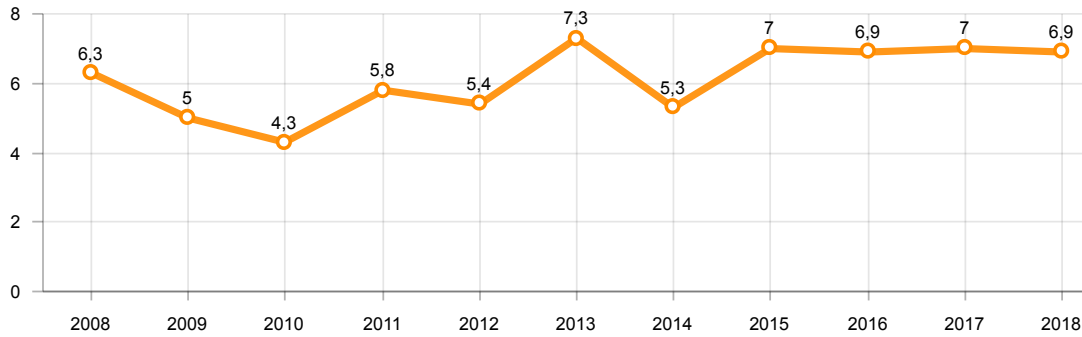
Ticari Araç Üretimi (x1000)(OCAK - EKİM)
Commercial Vehicle Production (x1000)(January - October)



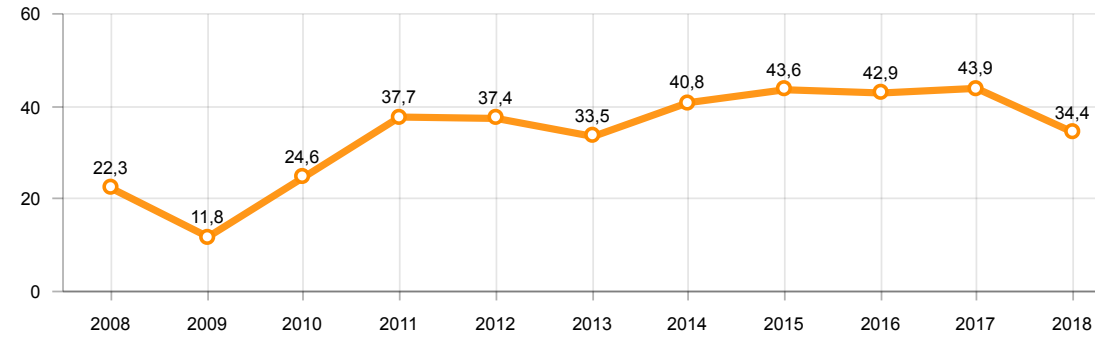
Büyük Kamyon Üretimi (x1000)(OCAK - EKİM)
Heavy Truck Production (x1000)(January - October)



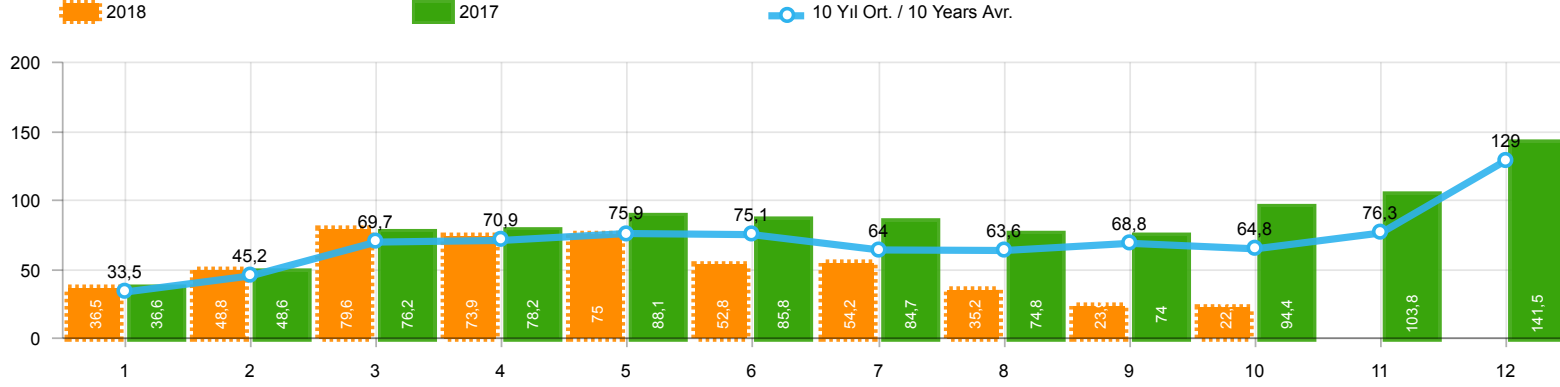
Otobüs Üretimi (x1000)(OCAK - EKİM)
Bus Production (x1000)(January - October)



Traktör Üretimi (x1000)(OCAK - EKİM)
F. Tractor Production (x1000)(January - October)



Toplam Pazarın Analizi(x1000)(OCAK - EKİM)
Total Market Analysis(x1000)(January - October)

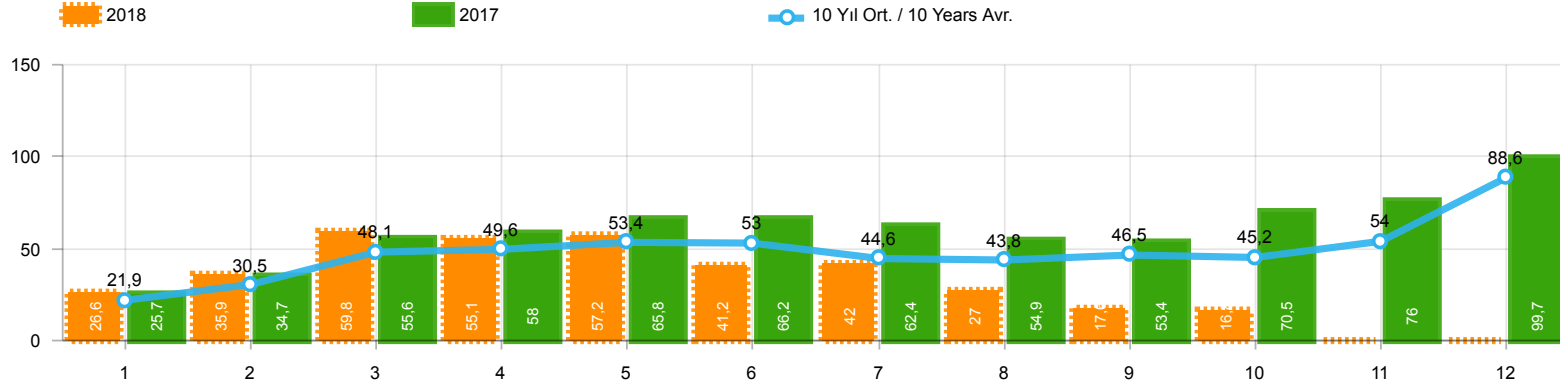


Aylar / Months	10 Yıl Ort / 10 Years Avr.	2018	%
1	33.545	36.536	8,9
2	45.155	48.769	8,0
3	69.683	79.600	14,2
4	70.861	73.886	4,3
5	75.885	74.996	-1,2
6	75.097	52.788	-29,7
7	63.986	54.194	-15,3
8	63.599	35.154	-44,7
9	68.790	23.918	-65,2
10	64.788	22.315	-65,6
TOPLAM / TOTAL	631.386	502.156	-20,5

Yıl / Year	1	2	3	4	5	6	7	8	9	10	11	12	1-10 Toplam / Total	Toplam / Total	1-10 Yerli / Local	1-10 İthal / Import	İthal Oran / Import %
2008	33.882	38.187	56.863	51.052	51.762	49.371	44.634	46.679	46.696	35.152	28.291	44.296	454.278	526.865	192.692	261.586	57,6
2009	20.605	22.873	56.527	54.433	64.947	63.090	30.374	37.038	83.553	22.191	29.309	91.762	455.631	576.702	205.369	250.262	54,9
2010	21.070	32.331	54.019	57.241	61.837	63.511	64.011	64.961	67.040	76.753	77.488	155.234	562.774	795.496	236.484	326.290	58,0
2011	47.759	62.586	84.045	82.782	85.862	85.992	65.658	61.645	64.313	73.227	67.150	134.468	713.869	915.487	291.273	422.596	59,2
2012	31.552	44.138	69.242	66.559	75.195	75.108	65.444	60.982	73.501	62.933	75.203	121.442	624.654	821.299	236.286	388.368	62,2
2013	37.563	51.133	72.943	77.265	85.835	78.043	75.152	67.662	71.388	60.690	83.470	136.048	677.674	897.192	211.066	466.608	68,9
2014	34.751	37.659	51.312	57.113	62.447	64.295	62.770	63.303	70.764	69.742	84.368	154.843	574.156	813.367	197.036	377.120	65,7
2015	37.256	59.221	89.765	96.182	85.804	91.071	87.358	85.244	67.181	67.086	88.431	164.464	766.168	1.019.063	264.108	502.060	65,5
2016	34.369	54.840	85.932	87.748	97.090	94.666	59.732	73.654	69.413	85.666	125.462	145.706	743.110	1.014.278	238.135	504.975	68,0
2017	36.640	48.585	76.178	78.231	88.066	85.820	84.727	74.818	74.046	94.439	103.772	141.507	741.550	986.829	268.817	472.733	63,7
2018	36.536	48.769	79.600	73.886	74.996	52.788	54.194	35.154	23.918	22.315			502.156	502.156	191.259	310.897	61,9

Otomobil Pazarının Analizi(x1000)(OCAK - EKİM)

P.Cars Market Analysis(x1000)(January - October)



Aylar / Months	10 Yıl Ort / 10 Years Avr.	2018	%
1	21.905	26.611	21,5
2	30.458	35.901	17,9
3	48.088	59.798	24,4
4	49.614	55.108	11,1
5	53.417	57.227	7,1
6	53.000	41.225	-22,2
7	44.610	42.024	-5,8
8	43.833	26.976	-38,5
9	46.505	17.595	-62,2
10	45.241	16.809	-62,8
TOPLAM / TOTAL	436.671	379.274	-13,1

Yıl / Year	1	2	3	4	5	6	7	8	9	10	11	12	1-10 Toplam / Total	Toplam / Total	1-10 Yerli / Local	1-10 İthal / Import	İthal Oran / Import %
2008	18.588	21.196	34.147	30.313	31.477	28.724	25.530	26.102	27.053	19.788	17.201	25.879	262.918	305.998	85.708	177.210	67,4
2009	13.173	14.492	40.622	36.202	44.188	41.019	16.637	22.537	52.162	13.828	17.781	57.178	294.860	369.819	98.793	196.067	66,5
2010	12.594	20.651	33.958	36.549	40.467	42.086	41.399	42.222	42.477	47.859	50.061	99.461	360.262	509.784	111.597	248.665	69,0
2011	29.868	39.004	54.023	53.835	56.302	56.714	43.518	38.875	39.964	47.508	44.951	88.957	459.611	593.519	142.257	317.354	69,0
2012	21.077	29.189	47.270	45.645	50.460	50.849	44.531	41.236	49.360	43.440	52.297	80.926	423.057	556.280	115.922	307.135	72,6
2013	25.835	36.814	51.785	56.999	62.383	58.290	55.712	51.611	52.925	46.985	64.117	101.199	499.339	664.655	110.263	389.076	77,9
2014	24.368	27.167	37.812	42.769	46.379	47.278	46.602	45.131	49.262	50.814	59.695	110.054	417.582	587.331	108.721	308.861	74,0
2015	24.498	40.817	61.676	70.211	62.878	67.766	64.218	61.753	47.088	47.954	62.397	114.340	548.859	725.596	138.431	410.428	74,8
2016	23.358	40.588	63.975	65.618	73.832	71.111	45.566	53.977	51.340	63.746	95.783	108.044	553.111	756.938	133.869	419.242	75,8
2017	25.689	34.658	55.616	57.998	65.799	66.164	62.384	54.890	53.423	70.488	75.956	99.694	547.109	722.759	164.605	382.504	69,9
2018	26.611	35.901	59.798	55.108	57.227	41.225	42.024	26.976	17.595	16.809			379.274	379.274	126.695	252.579	66,6

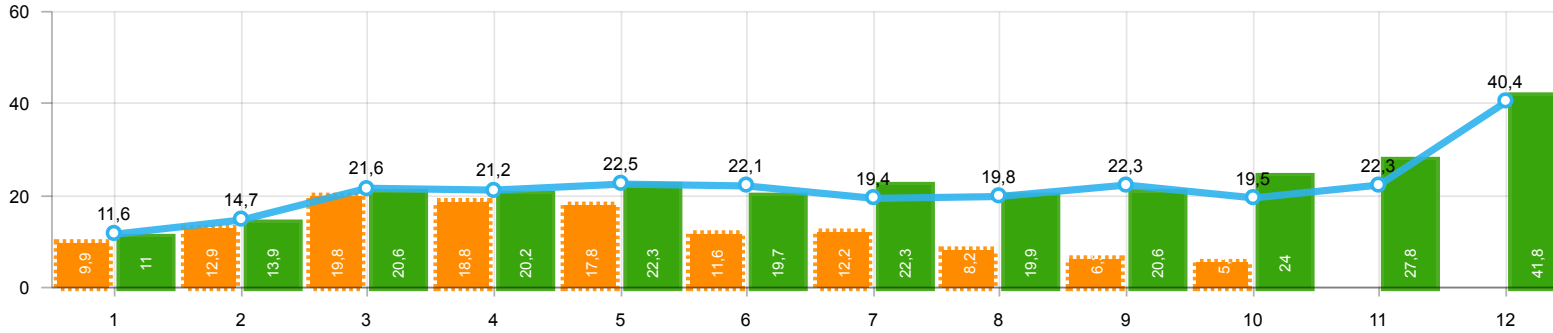
Ticari Araç Pazarının Analizi(x1000)(OCAK - EKİM)
CV Market Analysis(x1000)(January - October)



2018

2017

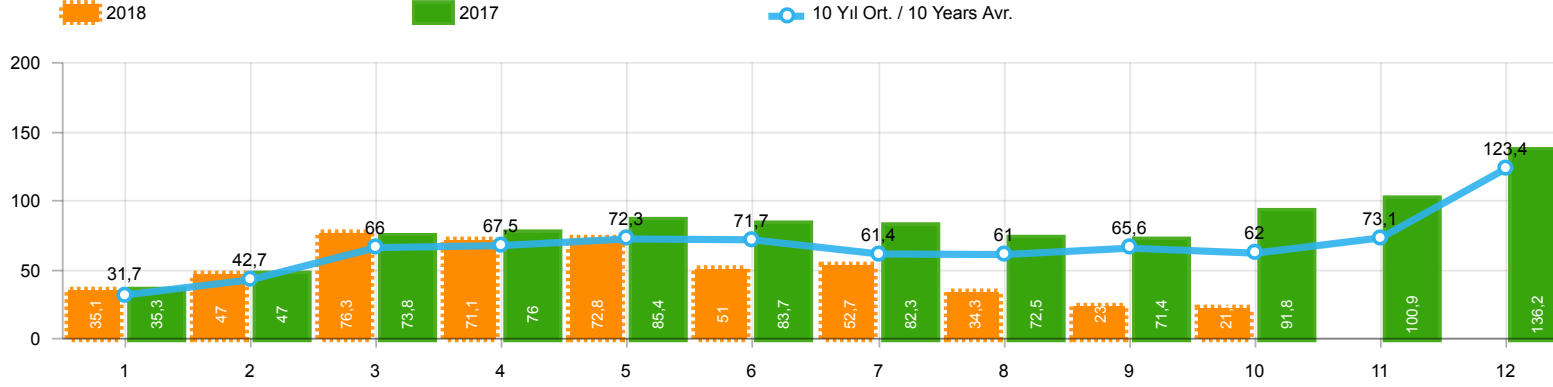
10 Yıl Ort. / 10 Years Avr.



Aylar / Months	10 Yıl Ort / 10 Years Avr.	2018	%
1	11.640	9.925	-14,7
2	14.698	12.868	-12,4
3	21.594	19.802	-8,3
4	21.247	18.778	-11,6
5	22.468	17.769	-20,9
6	22.097	11.563	-47,7
7	19.376	12.170	-37,2
8	19.765	8.178	-58,6
9	22.284	6.323	-71,6
10	19.547	5.506	-71,8
TOPLAM / TOTAL	194.716	122.882	-36,9

Yıl / Year	1	2	3	4	5	6	7	8	9	10	11	12	1-10 Toplam / Total	Toplam / Total	1-10 Yerli / Local	1-10 İthal / Import	İthal Oran / Import %
2008	15.294	16.991	22.716	20.739	20.285	20.647	19.104	20.577	19.643	15.364	11.090	18.417	191.360	220.867	106.984	84.376	44,1
2009	7.432	8.381	15.905	18.231	20.759	22.071	13.737	14.501	31.391	8.363	11.528	34.584	160.771	206.883	106.576	54.195	33,7
2010	8.476	11.680	20.061	20.692	21.370	21.425	22.612	22.739	24.563	28.894	27.427	55.773	202.512	285.712	124.887	77.625	38,3
2011	17.891	23.582	30.022	28.947	29.560	29.278	22.140	22.770	24.349	25.719	22.199	45.511	254.258	321.968	149.016	105.242	41,4
2012	10.475	14.949	21.972	20.914	24.735	24.259	20.913	19.746	24.141	19.493	22.906	40.516	201.597	265.019	120.364	81.233	40,3
2013	11.728	14.319	21.158	20.266	23.452	19.753	19.440	16.051	18.463	13.705	19.353	34.849	178.335	232.537	100.803	77.532	43,5
2014	10.383	10.492	13.500	14.344	16.068	17.017	16.168	18.172	21.502	18.928	24.673	44.789	156.574	226.036	88.315	68.259	43,6
2015	12.758	18.404	28.089	25.971	22.926	23.305	23.140	23.491	20.093	19.132	26.034	50.124	217.309	293.467	125.677	91.632	42,2
2016	11.011	14.252	21.957	22.130	23.258	23.555	14.166	19.677	18.073	21.920	29.679	37.662	189.999	257.340	104.266	85.733	45,1
2017	10.951	13.927	20.562	20.233	22.267	19.656	22.343	19.928	20.623	23.951	27.816	41.813	194.441	264.070	104.212	90.229	46,4
2018	9.925	12.868	19.802	18.778	17.769	11.563	12.170	8.178	6.323	5.506			122.882	122.882	64.564	58.318	47,5

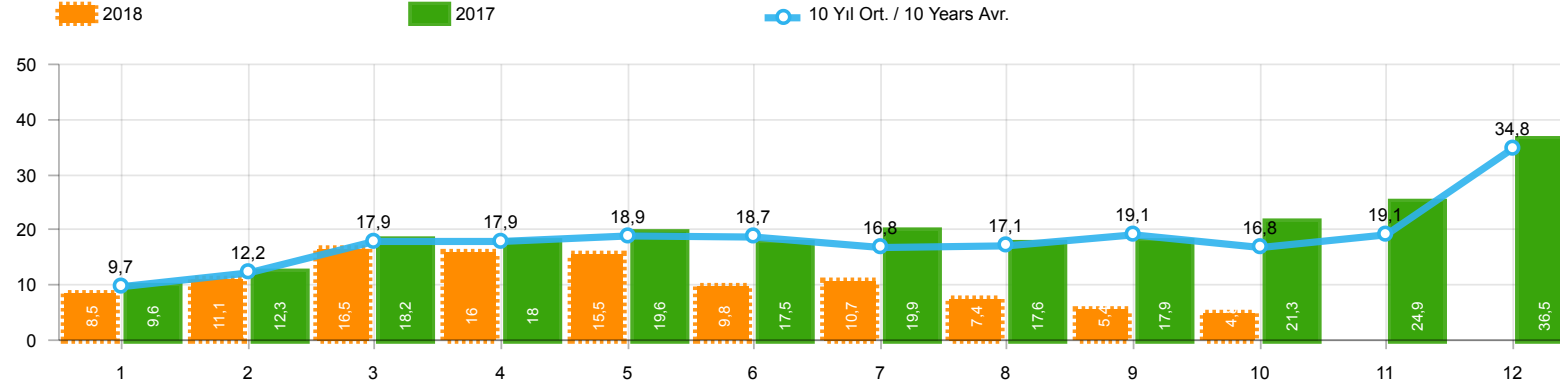
Hafif Araç Pazarının Analizi(x1000)(OCAK - EKİM) LV Market Analysis(x1000)(January - October)



Aylar / Months	10 Yıl Ort / 10 Years Avr.	2018	%
1	31.651	35.076	10,8
2	42.660	47.009	10,2
3	66.022	76.345	15,6
4	67.529	71.126	5,3
5	72.313	72.755	0,6
6	71.654	51.037	-28,8
7	61.386	52.734	-14,1
8	60.951	34.346	-43,6
9	65.637	23.028	-64,9
10	62.027	21.571	-65,2
TOPLAM / TOTAL	601.831	485.027	-19,4

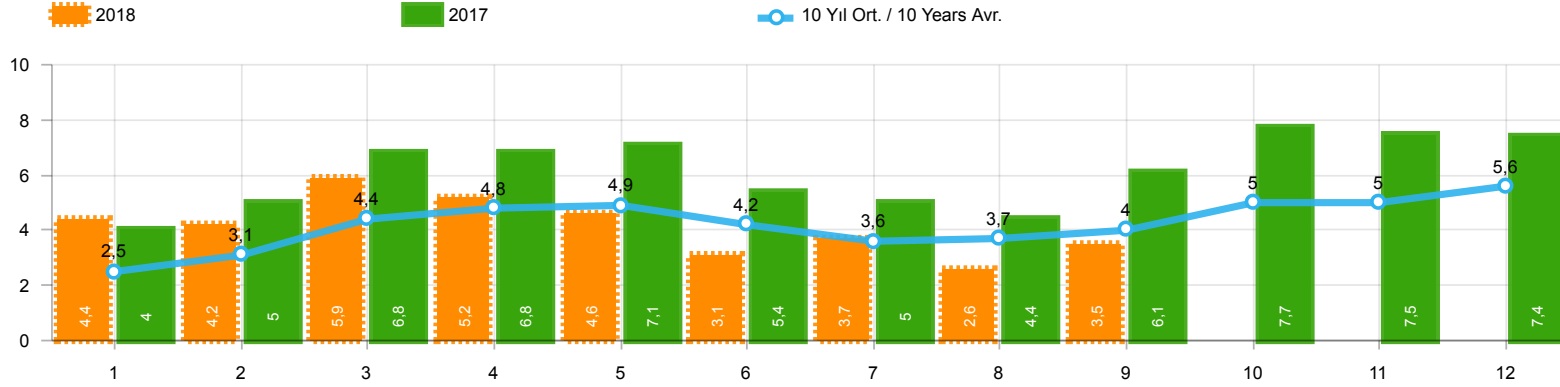
Yıl / Year	1	2	3	4	5	6	7	8	9	10	11	12	1-10 Toplam / Total	Toplam / Total	1-10 Yerli / Local	1-10 İthal / Import	İthal Oran / Import %
2008	31.527	35.251	53.649	47.701	48.598	46.324	42.156	43.670	43.932	32.884	26.253	42.078	425.692	494.023	169.366	256.326	60,2
2009	19.606	21.742	55.111	52.640	63.191	61.067	28.845	35.609	81.397	21.033	27.962	88.923	440.241	557.126	192.748	247.493	56,2
2010	20.095	31.172	51.769	54.946	59.377	60.896	61.345	61.764	63.814	73.404	73.962	148.369	538.582	760.913	218.506	320.076	59,4
2011	44.892	58.663	78.403	77.695	80.646	81.573	63.044	58.406	60.129	69.421	63.657	127.910	672.872	864.439	263.316	409.556	60,9
2012	29.545	41.324	64.884	62.949	70.863	71.067	62.304	58.148	69.629	59.938	71.710	115.400	590.651	777.761	211.642	379.009	64,2
2013	35.523	48.307	68.774	73.575	81.468	74.096	71.596	65.043	67.963	58.014	79.301	129.718	644.359	853.378	185.428	458.931	71,2
2014	32.670	35.021	47.581	53.305	58.121	60.163	59.907	60.199	66.531	66.573	80.621	146.989	540.071	767.681	171.421	368.650	68,3
2015	34.615	55.331	83.302	91.602	81.542	86.158	83.836	82.577	64.025	64.255	84.601	156.173	727.243	968.017	235.631	491.612	67,6
2016	32.713	52.825	82.948	84.887	93.904	91.540	58.533	71.556	67.593	83.000	122.309	141.912	719.499	983.720	220.764	498.735	69,3
2017	35.323	46.965	73.802	75.988	85.422	83.658	82.297	72.536	71.352	91.752	100.859	136.240	719.095	956.194	252.593	466.502	64,9
2018	35.076	47.009	76.345	71.126	72.755	51.037	52.734	34.346	23.028	21.571			485.027	485.027	179.889	305.138	62,9

Hafif Ticari Araç Pazarının Analizi(x1000)(OCAK - EKİM)
LCV Market Analysis(x1000)(January - October)



Aylar / Months	10 Yıl Ort / 10 Years Avr.	2018	%
1	9.746	8.465	-13,1
2	12.203	11.108	-9,0
3	17.934	16.547	-7,7
4	17.915	16.018	-10,6
5	18.897	15.528	-17,8
6	18.654	9.812	-47,4
7	16.777	10.710	-36,2
8	17.117	7.370	-56,9
9	19.131	5.433	-71,6
10	16.786	4.762	-71,6
TOPLAM / TOTAL	165.160	105.753	-36,0

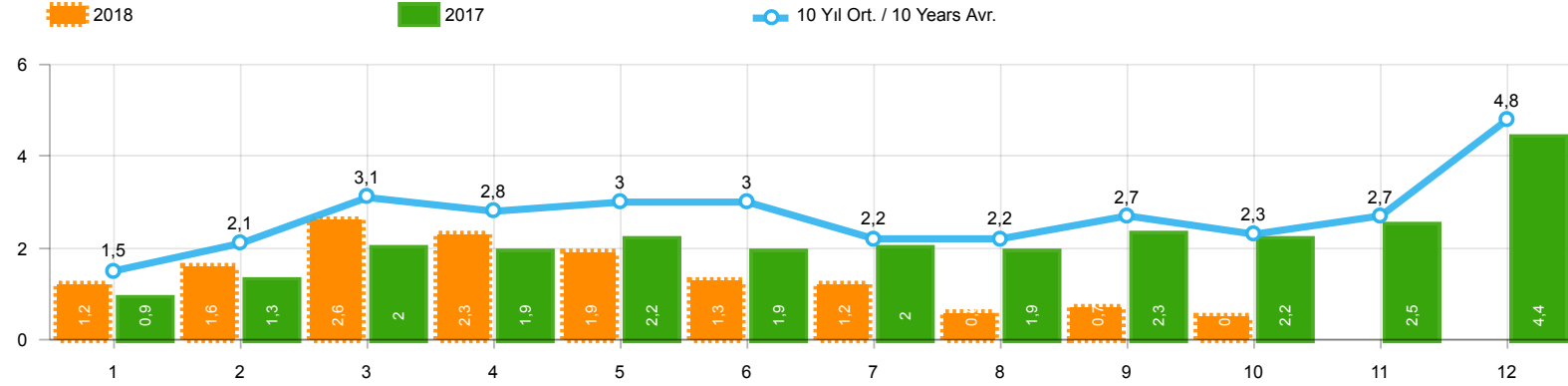
Yıl / Year	1	2	3	4	5	6	7	8	9	10	11	12	1-10 Toplam / Total	Toplam / Total	1-10 Yerli / Local	1-10 İthal / Import	İthal Oran / Import %
2008	12.939	14.055	19.502	17.388	17.121	17.600	16.626	17.568	16.879	13.096	9.052	16.199	162.774	188.025	83.658	79.116	48,6
2009	6.433	7.250	14.489	16.438	19.003	20.048	12.208	13.072	29.235	7.205	10.181	31.745	145.381	187.307	93.955	51.426	35,4
2010	7.501	10.521	17.811	18.397	18.910	18.810	19.946	19.542	21.337	25.545	23.901	48.908	178.320	251.129	106.909	71.411	40,0
2011	15.024	19.659	24.380	23.860	24.344	24.859	19.526	19.531	20.165	21.913	18.706	38.953	213.261	270.920	121.059	92.202	43,2
2012	8.468	12.135	17.614	17.304	20.403	20.218	17.773	16.912	20.269	16.498	19.413	34.474	167.594	221.481	95.720	71.874	42,9
2013	9.688	11.493	16.989	16.576	19.085	15.806	15.884	13.432	15.038	11.029	15.184	28.519	145.020	188.723	75.165	69.855	48,2
2014	8.302	7.854	9.769	10.536	11.742	12.885	13.305	15.068	17.269	15.759	20.926	36.935	122.489	180.350	62.700	59.789	48,8
2015	10.117	14.514	21.626	21.391	18.664	18.392	19.618	20.824	16.937	16.301	22.204	41.833	178.384	242.421	97.200	81.184	45,5
2016	9.355	12.237	18.973	19.269	20.072	20.429	12.967	17.579	16.253	19.254	26.526	33.868	166.388	226.782	86.895	79.493	47,8
2017	9.634	12.307	18.186	17.990	19.623	17.494	19.913	17.646	17.929	21.264	24.903	36.546	171.986	233.435	87.988	83.998	48,8
2018	8.465	11.108	16.547	16.018	15.528	9.812	10.710	7.370	5.433	4.762			105.753	105.753	53.194	52.559	49,7



Aylar / Months	10 Yıl Ort / 10 Years Avr.	2018	%
1	2.510	4.362	73,8
2	3.127	4.179	33,7
3	4.447	5.925	33,2
4	4.833	5.216	7,9
5	4.934	4.584	-7,1
6	4.201	3.146	-25,1
7	3.594	3.654	1,7
8	3.680	2.587	-29,7
9	3.987	3.541	-11,2
TOPLAM / TOTAL	35.312	37.194	5,3

Yıl / Year	1	2	3	4	5	6	7	8	9	10	11	12	1-9 Toplam / Total	Toplam / Total
2008	2.770	1.855	3.395	3.081	2.769	2.400	2.232	2.485	1.856	1.773	1.305	1.101	22.843	27.022
2009	717	572	688	1.070	1.297	1.256	1.054	1.183	1.117	1.356	1.304	2.144	8.954	13.758
2010	1.111	1.991	2.330	3.039	2.567	2.638	1.965	3.019	2.806	4.424	3.978	6.168	21.466	36.036
2011	2.975	5.242	5.927	5.358	6.016	6.335	4.534	4.051	4.140	5.828	4.943	4.992	44.578	60.341
2012	2.362	1.983	4.348	6.579	6.273	4.569	3.837	3.158	3.618	4.027	4.807	4.757	36.727	50.318
2013	2.161	2.432	4.005	4.585	5.616	3.136	4.574	3.408	4.935	4.762	5.781	6.891	34.852	52.286
2014	2.169	3.512	4.476	4.905	5.094	5.028	4.233	4.920	5.619	5.743	6.250	7.409	39.956	59.358
2015	3.124	3.984	5.460	6.383	6.078	5.748	4.677	5.044	4.765	7.049	6.898	7.564	45.263	66.774
2016	3.739	4.731	7.067	6.546	6.575	5.543	3.833	5.134	4.945	7.372	7.090	7.603	48.113	70.178
2017	3.974	4.964	6.773	6.780	7.057	5.356	5.003	4.396	6.064	7.734	7.457	7.351	50.367	72.909
2018	4.362	4.179	5.925	5.216	4.584	3.146	3.654	2.587	3.541				37.194	37.194

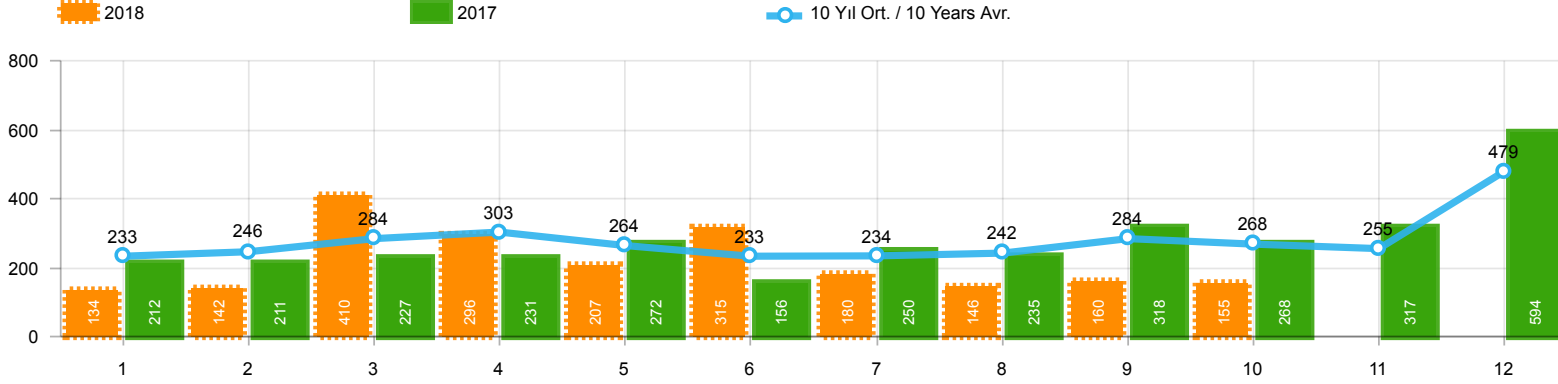
Kaynak: TÜİK trafik kayıtları.
Rakamlar, son iki model yılına ait traktör tescillerinden oluşmaktadır.
Source: Turkish Statistical Institute – Traffic registrations
Data represents the last two model year's farm tractors registration figures



Aylar / Months	10 Yıl Ort / 10 Years Avr.	2018	%
1	1.505	1.248	-17,1
2	2.053	1.553	-24,4
3	3.131	2.630	-16,0
4	2.777	2.328	-16,2
5	3.005	1.909	-36,5
6	2.955	1.272	-57,0
7	2.196	1.235	-43,8
8	2.232	620	-72,2
9	2.704	656	-75,7
10	2.331	532	-77,2
TOPLAM / TOTAL	24.889	13.983	-43,8

Yıl / Year	1	2	3	4	5	6	7	8	9	10	11	12	1-10 Toplam / Total	Toplam / Total	1-10 Yerli / Local	1-10 İthal / Import	İthal Oran / Import %
2008	1.829	2.350	2.655	2.644	2.513	2.515	2.048	2.498	2.241	1.816	1.674	1.770	23.109	26.553	17.908	5.201	22,5
2009	782	763	1.062	1.381	1.426	1.649	1.261	1.164	1.862	963	1.047	2.368	12.313	15.728	9.584	2.729	22,2
2010	768	960	1.950	1.949	2.140	2.314	2.403	2.754	2.864	3.001	3.231	6.158	21.103	30.492	14.946	6.157	29,2
2011	2.651	3.544	5.142	4.503	4.563	3.852	2.261	2.745	3.784	3.400	3.149	5.712	36.445	45.306	23.489	12.956	35,5
2012	1.703	2.454	3.866	3.209	3.678	3.540	2.750	2.403	3.296	2.497	3.154	5.300	29.396	37.850	20.071	9.325	31,7
2013	1.484	2.113	3.343	2.925	3.504	3.186	2.777	2.103	2.875	2.086	3.631	5.444	26.396	35.471	18.746	7.650	29,0
2014	1.522	2.065	3.094	3.224	3.727	3.726	2.578	2.783	3.708	2.858	3.384	6.869	29.285	39.538	20.972	8.313	28,4
2015	2.215	3.346	5.699	3.729	3.600	4.253	2.922	2.211	2.687	2.266	3.146	7.307	32.928	43.381	22.549	10.379	31,5
2016	1.167	1.648	2.515	2.319	2.711	2.623	984	1.796	1.438	2.238	2.485	3.127	19.439	25.051	13.230	6.209	31,9
2017	931	1.290	1.982	1.888	2.184	1.891	1.974	1.860	2.284	2.188	2.487	4.438	18.472	25.397	12.255	6.217	33,7
2018	1.248	1.553	2.630	2.328	1.909	1.272	1.235	620	656	532			13.983	13.983	8.235	5.748	41,1

Midibüs Pazarının Analizi(OCAK - EKİM)
Midibus Market Analysis(January - October)

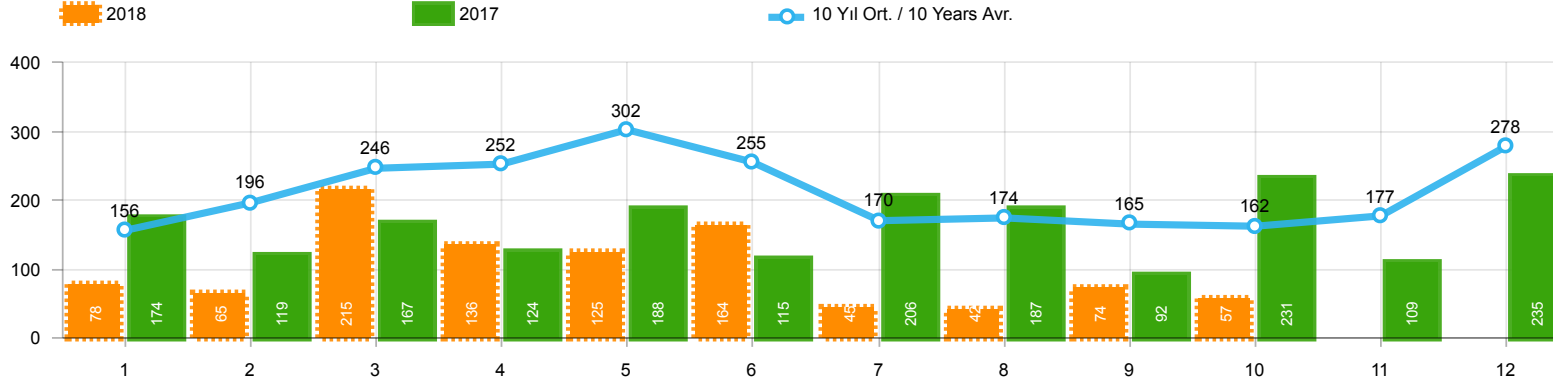


Aylar / Months	10 Yıl Ort / 10 Years Avr.	2018	%
1	233	134	-42,5
2	246	142	-42,3
3	284	410	44,6
4	303	296	-2,4
5	264	207	-21,7
6	233	315	35,4
7	234	180	-22,9
8	242	146	-39,7
9	284	160	-43,6
10	268	155	-42,1
TOPLAM / TOTAL	2.590	2.145	-17,2

Yıl / Year	1	2	3	4	5	6	7	8	9	10	11	12	1-10 Toplam / Total	Toplam / Total
2008	401	453	365	477	392	292	323	344	316	334	205	208	3.697	4.110
2009	133	103	153	210	145	183	138	146	152	134	150	280	1.497	1.927
2010	140	128	172	153	127	124	93	232	199	204	162	382	1.572	2.116
2011	124	167	267	260	241	233	205	280	270	230	168	525	2.277	2.970
2012	179	257	277	229	257	239	216	249	325	269	189	398	2.497	3.084
2013	191	268	289	276	283	241	367	235	305	392	415	697	2.847	3.959
2014	360	394	384	333	294	258	216	229	395	220	266	653	3.083	4.002
2015	280	322	451	561	372	405	389	253	316	394	325	621	3.743	4.689
2016	309	158	251	302	261	196	139	220	241	230	354	431	2.307	3.092
2017	212	211	227	231	272	156	250	235	318	268	317	594	2.380	3.291
2018	134	142	410	296	207	315	180	146	160	155			2.145	2.145

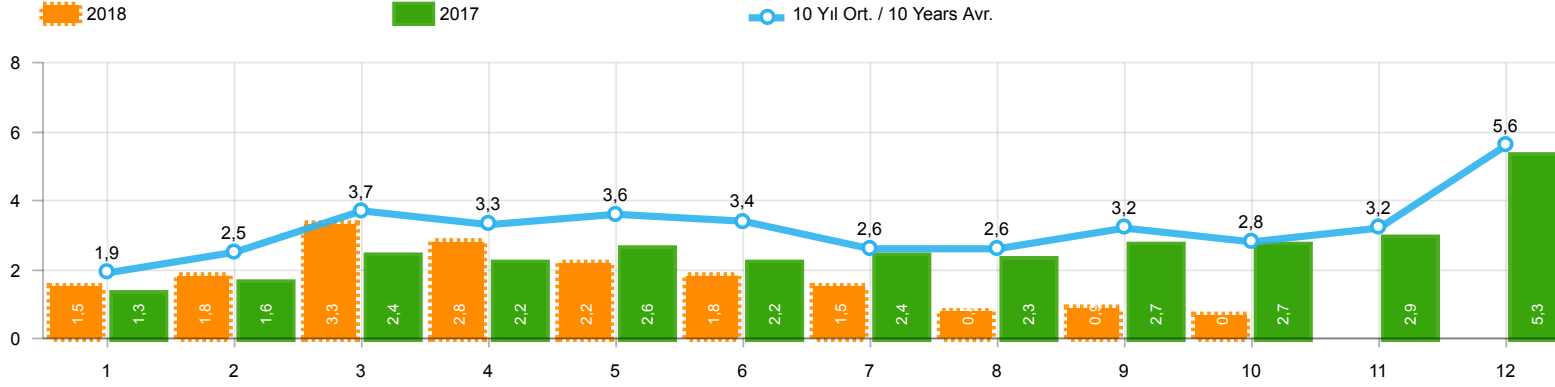
Otobüs Pazarının Analizi(OCAK - EKİM)

Otobus Market Analysis(January - October)



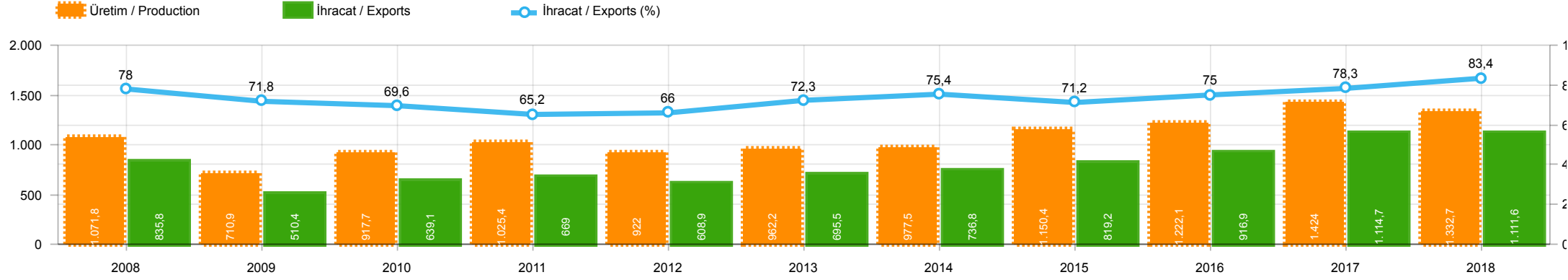
Aylar / Months	10 Yıl Ort. / 10 Years Avr.	2018	%
1	156	78	-49,9
2	196	65	-66,8
3	246	215	-12,6
4	252	136	-45,9
5	302	125	-58,7
6	255	164	-35,7
7	170	45	-73,6
8	174	42	-75,8
9	165	74	-55,3
10	162	57	-64,7
TOPLAM / TOTAL	2.077	1.001	-51,8

Yıl / Year	1	2	3	4	5	6	7	8	9	10	11	12	1-10 Toplam / Total	Toplam / Total	1-10 Yerli / Local	1-10 İthal / Import	İthal Oran / Import %
2008	125	133	194	230	259	240	107	167	207	118	159	240	1.780	2.179	1.721	59	3,3
2009	84	265	201	202	185	191	130	119	142	61	150	191	1.580	1.921	1.540	40	2,5
2010	67	71	128	193	193	177	170	211	163	144	133	325	1.517	1.975	1.460	57	3,8
2011	92	212	233	324	412	334	148	214	130	176	176	321	2.275	2.772	2.191	84	3,7
2012	125	103	215	172	397	262	174	182	251	229	150	344	2.110	2.604	2.076	34	1,6
2013	365	445	537	489	580	520	412	281	245	198	123	189	4.072	4.384	4.045	27	0,7
2014	199	179	253	251	305	148	69	92	130	91	97	332	1.717	2.146	1.560	157	9,1
2015	146	222	313	290	290	255	211	203	153	171	359	363	2.254	2.976	2.185	69	3,1
2016	180	209	218	240	214	307	76	82	141	198	314	236	1.865	2.415	1.834	31	1,7
2017	174	119	167	124	188	115	206	187	92	231	109	235	1.603	1.947	1.589	14	0,9
2018	78	65	215	136	125	164	45	42	74	57			1.001	1.001	990	11	1,1



Aylar / Months	10 Yıl Ort. / 10 Years Avr.	2018	%
1	1.894	1.460	-22,9
2	2.495	1.760	-29,5
3	3.660	3.255	-11,1
4	3.332	2.760	-17,2
5	3.571	2.241	-37,2
6	3.443	1.751	-49,1
7	2.600	1.460	-43,8
8	2.648	808	-69,5
9	3.153	890	-71,8
10	2.761	744	-73,0
TOPLAM / TOTAL	29.556	17.129	-42,1

Yıl / Year	1	2	3	4	5	6	7	8	9	10	11	12	1-10 Toplam / Total	Toplam / Total	1-10 Yerli / Local	1-10 İthal / Import	İthal Oran / Import %
2008	2.355	2.936	3.214	3.351	3.164	3.047	2.478	3.009	2.764	2.268	2.038	2.218	28.586	32.842	23.326	5.260	18,4
2009	999	1.131	1.416	1.793	1.756	2.023	1.529	1.429	2.156	1.158	1.347	2.839	15.390	19.576	12.621	2.769	18,0
2010	975	1.159	2.250	2.295	2.460	2.615	2.666	3.197	3.226	3.349	3.526	6.865	24.192	34.583	17.978	6.214	25,7
2011	2.867	3.923	5.642	5.087	5.216	4.419	2.614	3.239	4.184	3.806	3.493	6.558	40.997	51.048	27.957	13.040	31,8
2012	2.007	2.814	4.358	3.610	4.332	4.041	3.140	2.834	3.872	2.995	3.493	6.042	34.003	43.538	24.644	9.359	27,5
2013	2.040	2.826	4.169	3.690	4.367	3.947	3.556	2.619	3.425	2.676	4.169	6.330	33.315	43.814	25.638	7.677	23,0
2014	2.081	2.638	3.731	3.808	4.326	4.132	2.863	3.104	4.233	3.169	3.747	7.854	34.085	45.686	25.615	8.470	24,8
2015	2.641	3.890	6.463	4.580	4.262	4.913	3.522	2.667	3.156	2.831	3.830	8.291	38.925	51.046	28.477	10.448	26,8
2016	1.656	2.015	2.984	2.861	3.186	3.126	1.199	2.098	1.820	2.666	3.153	3.794	23.611	30.558	17.371	6.240	26,4
2017	1.317	1.620	2.376	2.243	2.644	2.162	2.430	2.282	2.694	2.687	2.913	5.267	22.455	30.635	16.224	6.231	27,7
2018	1.460	1.760	3.255	2.760	2.241	1.751	1.460	808	890	744	-	-	17.129	17.129	11.370	5.759	33,6



	2008	2009	2010	2011	2012	2013	2014	2015	2016	2017	2018
İhracat/Export	835.823	510.424	639.064	669.023	608.928	695.511	736.829	819.187	916.873	1.114.658	1.111.645
Üretim/Production	1.071.829	710.921	917.703	1.025.358	922.035	962.173	977.511	1.150.359	1.222.078	1.424.042	1.332.726
İhracat/Exports (%)	78	71,8	69,6	65,2	66	72,3	75,4	71,2	75	78,3	83,4

Taşıt Araçları İhracatı (2016 - 2018)
Motor Vehicle Exports (2016 - 2018)

SEKTÖR / SECTOR	2016	2017	1/10-2017	1/10-2018	2018/2017 %
OTOMOBİL / Pass.Car	745.709	921.354	769.095	732.142	-4,8
OTOMOBİL TOPLAM / Pass. Car Total	745.709	921.354	769.095	732.142	-4,8
KAMYON / Truck	5.521	7.800	6.153	11.855	92,7
KAMYONET / Pick Up	347.949	350.108	283.537	311.060	9,7
OTOBÜS / Bus	6.498	7.028	5.807	6.096	5,0
MİNİBÜS / Minibus	34.790	45.794	38.245	37.505	-1,9
MİDİBÜS / Midibus	915	710	507	665	31,2
TİCARİ ARAÇLAR TOPLAM / Commercial Vehicle Total	395.673	411.440	334.249	367.181	9,9
TAŞIT ARAÇLARI TOPLAM / Motor Vehicles Total	1.141.382	1.332.794	1.103.344	1.099.323	-0,4
TRAKTÖR / F.Tractor	13.651	13.123	11.314	12.322	8,9
TRAKTÖR TOPLAM / F.Tractor Total	13.651	13.123	11.314	12.322	8,9
GENEL TOPLAM / GRAND TOTAL	1.155.033	1.345.917	1.114.658	1.111.645	-0,3

Üretici Bazında İhracat (adet)
Exports by Manufacturer (unit)

Üreticiler / Manufacturers	2016	2017	1-10 / 2017	1-10 / 2018
A.I.O.S.	673	700	465	710
FORD OTOSAN	256.706	296.840	240.970	268.495
HATTAT TRAKTÖR	1.026	1.100	1.017	534
HONDA TÜRKİYE	2.914	9.391	7.667	12.388
HYUNDAI ASSAN	207.234	204.382	170.382	159.435
KARSAN	3.629	2.969	2.310	2.903
M. BENZ TÜRK	8.307	9.865	8.219	13.478
MAN TÜRKİYE	1.717	2.007	1.655	1.989
OTOKAR	833	691	561	554
OYAK RENAULT	270.088	287.915	237.419	230.869
TEMSA	653	870	755	462
TOFAŞ	279.444	270.698	229.144	212.361
TOYOTA	109.184	246.466	203.797	195.679
TÜRK TRAKTÖR	12.625	12.023	10.297	11.788
GENEL TOPLAM / Grand Total	1.155.033	1.345.917	1.114.658	1.111.645

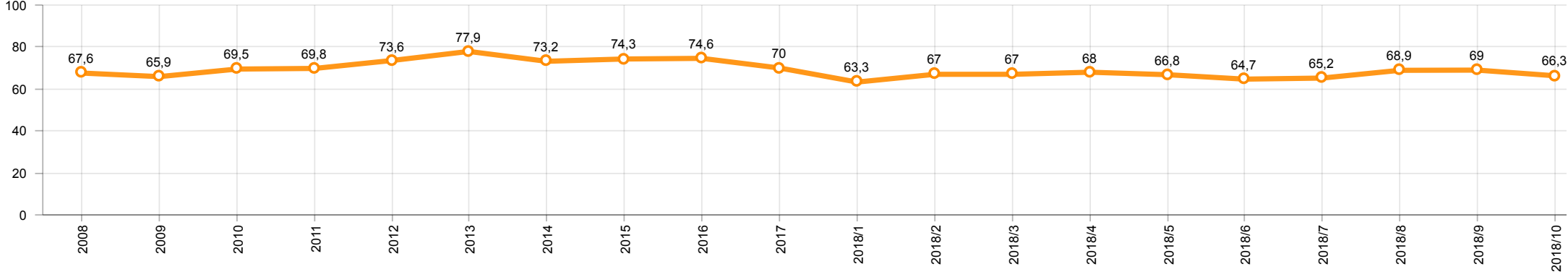
Otomotiv Ana ve Yan Sanayii İhracatı (ABD \$)
CBU and CKD Exports - \$

Sektör / Sector	2016	2017	OCAK - EKİM / January - October 2017	OCAK - EKİM / January - October 2018	2018 / 2017 %
Toplam Yan Sanayi / Total Component Industry	8.946.472.202	9.838.541.338	8.077.637.268	9.206.395.048	14,0
İç ve Dış Lastik / Tyres	978.124.241	1.131.881.119	942.429.687	1.156.832.814	22,8
Emniyet Camı / Safety Glasses	119.553.098	136.486.808	112.732.486	126.786.137	12,5
Motor / Engine	370.418.066	486.426.738	378.180.118	499.646.173	32,1
Akümülatör / Batteries	224.588.995	296.139.813	223.117.736	302.386.739	35,5
Diğer Aksam ve Parça / Spare Parts&Components	7.253.787.802	7.787.606.860	6.421.177.241	7.120.743.185	10,9
Toplam Ana Sanayi / Total Vehicle Industry	15.302.656.887	19.147.991.647	15.775.012.383	17.693.343.100	12,2
Otobüs / Bus	1.190.475.986	1.311.098.736	1.066.199.053	1.188.944.509	11,5
Midibüs-Minibüs / Midibus-Minibus	238.911.957	217.704.499	178.795.689	178.104.030	-0,4
Otomobil / P.Cars	8.336.928.418	11.790.776.093	9.727.491.849	10.327.167.896	6,2
Kamyon-Kamyonet / Truck-Pick Up&Van	4.617.147.751	4.849.465.868	3.916.251.698	4.505.917.496	15,1
Römork ve Yarı Römork / Trailer-Semi Trailer	265.338.366	230.168.223	267.228.330	404.554.709	51,4
Çekici / Tractor	316.355.575	427.967.083	354.844.275	752.613.356	112,1
Tarım Traktörü / Farm Tractor	337.498.834	320.811.145	264.201.489	336.041.104	27,2
Toplam / Total	24.249.129.089	28.986.532.985	23.852.649.651	26.899.738.148	12,8

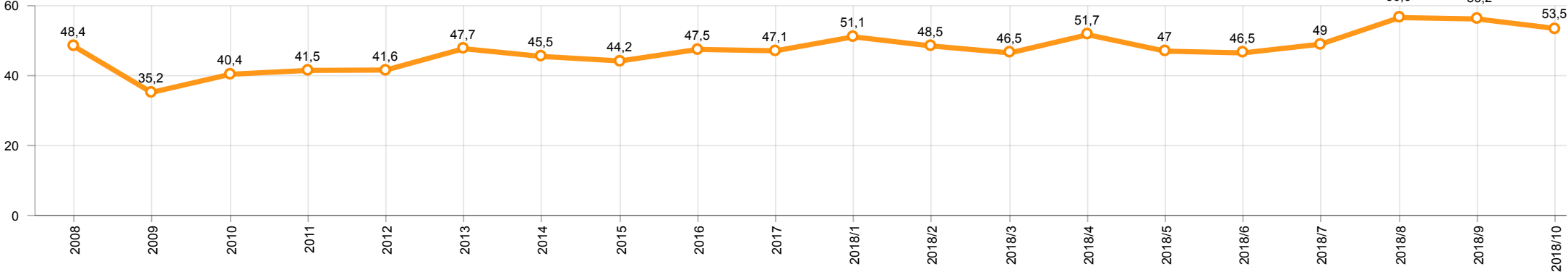
Kaynak: Uludağ İhracatçı Birlikleri . ÜİB tarafından OSD için özel olarak analiz edilen Otomotiv İhracatı kapsamında; ÜİB Türkiye Genel Otomotiv Endüstrisi sınıflandırmasına kıyasla “Römork ve Yarı Römork” , “Tarım Traktörü” verileri dahil edilmekte; “Kullanılmış Araçlar” , “İki Tekerlekli Taşıtlar” , “Demiryolu Taşıtları” hariç tutulmaktadır.

Source: Uludağ Exporters Association – Special Analyze for OSD. Compared to Turkish General Automotive Industry classification, this special analyze includes; farms tractors, trailers and semi-trailers, does not include; used vehicles, two-wheeled vehicles and railway vehicles

Otomobil Pazarında İthalatın Payı (%)
Import Share in P.Car Market (%)



Hafif Ticari Araçlar Pazarında İthalatın Payı (%)
Import Share in LCV Market (%)



Araç Tipleri / Vehicle Types	1	2	3	4	5	6	7	8	9	10	11	12	Toplam / Total
OTOMOBİL - Pass.Car	73.408	75.779	86.252	79.786	77.297	68.030	82.198	30.528	71.505	87.359			732.142
KAMYON - H. Truck	634	999	1.203	1.081	967	1.258	1.431	961	1.661	1.660			11.855
KAMYONET - Pick Up	18.119	39.567	36.795	31.090	34.733	35.060	34.279	12.507	36.751	32.159			311.060
OTOBÜS - Bus	490	486	715	594	728	612	623	579	528	741			6.096
MİNİBÜS - Minibus	1.649	4.521	3.929	4.336	2.777	4.653	4.752	1.227	4.606	5.055			37.505
MİDİBÜS - Midibus	13	50	89	58	49	72	106	99	41	88			665
TİCARİ ARAÇLAR TOPLAMI - CV Total	20.905	45.623	42.731	37.159	39.254	41.655	41.191	15.373	43.587	39.703			367.181
TAŞIT ARAÇLARI TOPLAMI - MV Total	94.313	121.402	128.983	116.945	116.551	109.685	123.389	45.901	115.092	127.062			1.099.323
TRAKTÖR - F.Tractor	802	941	1.155	1.108	1.410	1.170	1.416	1.218	1.604	1.498			12.322
GENEL TOPLAM - Grand Total	95.115	122.343	130.138	118.053	117.961	110.855	124.805	47.119	116.696	128.560			1.111.645

Otomobil / P.Car

Firmalar / Firms	1	2	3	4	5	6	7	8	9	10	11	12	Toplam / Total
FORD OTOSAN	2.920	2.041	1.787	40	1.154	1.629	2.026	527	2.396	1.887	-	-	16.407
HONDA TÜRKİYE	1.251	2.300	814	1.430	1.523	1.362	1.347	359	919	1.083	-	-	12.388
HYUNDAI ASSAN	10.899	17.471	18.914	17.307	17.265	16.490	19.191	3.300	18.824	19.774	-	-	159.435
OYAK RENAULT	27.028	20.491	24.760	25.707	28.043	21.090	27.056	9.492	16.055	31.147	-	-	230.869
TOFAŞ	9.736	15.502	16.864	13.195	12.558	11.512	9.883	4.600	12.784	10.730	-	-	117.364
TOYOTA	21.574	17.974	23.113	22.107	16.754	15.947	22.695	12.250	20.527	22.738	-	-	195.679
TOPLAM - Total	73.408	75.779	86.252	79.786	77.297	68.030	82.198	30.528	71.505	87.359	-	-	732.142

Kamyonet / Pick-up

Firmalar / Firms	1	2	3	4	5	6	7	8	9	10	11	12	Toplam / Total
FORD OTOSAN	12.083	28.583	25.157	20.652	23.087	23.358	24.767	6.746	25.815	23.195	-	-	213.443
KARSAN	194	271	318	270	179	282	414	124	210	329	-	-	2.591
OTOKAR	-	6	-	-	-	-	8	-	-	15	-	-	29
TOFAŞ	5.842	10.707	11.320	10.168	11.467	11.420	9.090	5.637	10.726	8.620	-	-	94.997
TOPLAM - Total	18.119	39.567	36.795	31.090	34.733	35.060	34.279	12.507	36.751	32.159	-	-	311.060

Minibüs / Minibus

Firmalar / Firms	1	2	3	4	5	6	7	8	9	10	11	12	Toplam / Total
FORD OTOSAN	1.597	4.521	3.904	4.335	2.776	4.648	4.751	1.227	4.606	5.053	-	-	37.418
KARSAN	52	-	25	1	1	5	1	-	-	2	-	-	87
TOPLAM - Total	1.649	4.521	3.929	4.336	2.777	4.653	4.752	1.227	4.606	5.055	-	-	37.505

Kamyon / Truck

Firmalar / Firms	1	2	3	4	5	6	7	8	9	10	11	12	Toplam / Total
A.I.O.S.	-	-	-	-	-	6	-	-	-	-	-	-	6
FORD OTOSAN	68	99	138	87	106	159	134	83	133	220	-	-	1.227
KARSAN	-	-	-	-	-	-	-	-	-	-	-	-	-
M. BENZ TÜRK	566	900	1.065	994	861	1.093	1.297	878	1.528	1.440	-	-	10.622
OTOKAR	-	-	-	-	-	-	-	-	-	-	-	-	-
TOPLAM - Total	634	999	1.203	1.081	967	1.258	1.431	961	1.661	1.660	-	-	11.855

Midibüs / Midibus

Firmalar / Firms	1	2	3	4	5	6	7	8	9	10	11	12	Toplam / Total
A.I.O.S.	6	32	54	37	20	53	42	65	26	51	-	-	386
KARSAN	1	3	1	1	-	3	3	1	-	1	-	-	14
OTOKAR	4	15	27	15	15	12	56	31	14	24	-	-	213
TEMSA	2	-	7	5	14	4	5	2	1	12	-	-	52
TOPLAM - Total	13	50	89	58	49	72	106	99	41	88	-	-	665

Otobüs / Bus

Firmalar / Firms	1	2	3	4	5	6	7	8	9	10	11	12	Toplam / Total
A.I.O.S.	3	2	39	24	47	59	27	16	46	55	-	-	318
KARSAN	1	-	23	-	31	52	-	56	29	19	-	-	211
M. BENZ TÜRK	220	238	373	311	359	259	378	176	231	311	-	-	2.856
MAN TÜRKİYE	243	212	233	228	228	178	151	124	164	228	-	-	1.989
OTOKAR	19	19	27	8	22	26	24	100	36	31	-	-	312
TEMSA	4	15	20	23	41	38	43	107	22	97	-	-	410
TOPLAM - Total	490	486	715	594	728	612	623	579	528	741	-	-	6.096

Traktör / F.Tractor

Firmalar / Firms	1	2	3	4	5	6	7	8	9	10	11	12	Toplam / Total
HATTAT TRAKTÖR	1	24	45	49	60	109	103	7	104	32	-	-	534
TÜRK TRAKTÖR	801	917	1.110	1.059	1.350	1.061	1.313	1.211	1.500	1.466	-	-	11.788
TOPLAM - Total	802	941	1.155	1.108	1.410	1.170	1.416	1.218	1.604	1.498	-	-	12.322

Firmalar / Firms	2017 Toplam / Total	1	2	3	4	5	6	7	8	9	10	11	12	Toplam / Total
Alfa Romeo	320	5	14	13	32	25	10	14	15	13	24	-	-	165
Aston Martin	25	1	1	1	1	1	1	1	1	2	2	-	-	12
Audi	21.585	1.013	1.033	1.552	1.625	1.630	668	840	737	350	199	-	-	9.647
Bentley	16	-	3	-	-	1	1	-	1	-	2	-	-	8
BMW	19.564	626	1.003	1.586	1.270	1.910	1.386	760	1.005	158	343	-	-	10.047
Citroen	14.709	407	1.128	1.086	615	980	499	922	495	134	230	-	-	6.496
Dacia	41.914	937	1.298	3.600	3.199	3.193	2.254	2.343	1.220	1.141	1.042	-	-	20.227
DS	119	-	-	81	20	9	9	10	64	9	4	-	-	206
Ferrari	16	1	1	2	3	1	1	2	2	3	1	-	-	17
Fiat	2.157	56	102	142	130	178	139	112	79	57	42	-	-	1.037
Ford	33.671	920	1.440	2.638	2.506	2.803	2.016	1.914	1.438	705	724	-	-	17.104
Honda	7.250	207	189	469	646	588	451	402	322	502	361	-	-	4.137
Hyundai	26.841	1.282	1.734	2.376	2.555	2.463	1.898	1.382	656	1.036	867	-	-	16.249
Infinity	122	3	5	2	2	2	2	-	-	-	2	-	-	18
Jaguar	339	12	20	24	18	12	8	6	8	17	13	-	-	138
Jeep	2.357	101	159	255	295	185	175	140	91	90	89	-	-	1.580
Kia	10.937	431	514	872	984	742	770	795	418	241	326	-	-	6.093
Lamborghini	7	-	-	-	1	1	-	-	-	-	-	-	-	2
Land Rover	1.879	84	145	162	129	112	93	67	22	45	62	-	-	921
Lexus	101	2	2	8	10	7	2	5	1	2	8	-	-	47
Maserati	76	4	2	6	6	4	5	3	2	2	6	-	-	40
Mazda	1.412	62	76	135	134	129	40	73	52	110	20	-	-	831
Mercedes-Benz	25.588	1.190	1.151	2.031	1.496	2.153	1.326	1.251	951	781	606	-	-	12.936
Mini	1.480	55	82	116	121	146	66	103	70	45	50	-	-	854
Mitsubishi	354	12	9	21	58	57	39	14	14	29	28	-	-	281
Nissan	32.043	767	1.470	2.908	2.021	2.508	1.684	1.025	1.320	1.184	1.594	-	-	16.481
Opel	44.707	1.327	1.568	2.989	3.476	1.416	1.521	2.102	1.688	857	541	-	-	17.485
Peugeot	29.981	809	1.625	3.038	2.875	3.819	1.851	2.808	1.340	456	520	-	-	19.141
Porsche	670	43	50	61	70	54	36	49	75	32	28	-	-	498
Renault	37.021	1.013	1.552	1.821	2.617	2.694	1.770	1.711	1.042	782	396	-	-	15.398
Seat	16.064	663	869	1.226	1.341	1.154	753	1.387	862	285	236	-	-	8.776
Skoda	24.679	1.564	2.161	2.911	2.018	1.820	1.726	1.857	1.098	618	772	-	-	16.545
Smart	105	-	-	4	4	3	5	6	-	-	4	-	-	26
Ssangyong	362	26	25	38	18	19	6	9	7	4	6	-	-	158
Subaru	1.726	86	55	224	165	144	96	106	77	89	67	-	-	1.109
Suzuki	4.316	67	122	323	253	383	127	267	229	70	91	-	-	1.932
Toyota	7.297	309	376	294	318	370	218	193	243	101	114	-	-	2.536
Volkswagen	89.688	2.497	3.763	6.561	5.801	5.913	4.428	4.217	2.567	1.763	1.406	-	-	38.916
Volvo	4.470	250	302	503	631	590	577	520	375	427	310	-	-	4.485
GENEL TOPLAM - Grand Total	505.968	16.832	24.049	40.079	37.464	38.219	26.657	27.416	18.587	12.140	11.136	-	-	252.579

2018 Yılı İthal Hafif Ticari Araç Satışları
2018 Light Commercial Vehicles Import Sales



Firmalar / Firms	2017 Toplam / Total	1	2	3	4	5	6	7	8	9	10	11	12	Toplam / Total
Citroen	8.023	94	291	706	406	634	520	470	198	197	200	-	-	3.716
Dacia	6.456	254	302	335	337	328	293	259	467	319	245	-	-	3.139
Fiat	6.582	163	252	401	249	362	223	248	236	199	150	-	-	2.483
Ford	4.188	174	142	251	247	216	214	286	152	139	184	-	-	2.005
Hyundai	2.984	119	85	28	215	199	131	125	51	39	44	-	-	1.036
Isuzu	302	24	18	19	19	33	63	55	19	17	5	-	-	272
Iveco	2.566	122	148	161	146	133	107	137	82	110	72	-	-	1.218
Kia	3.591	111	143	207	322	221	149	127	82	70	54	-	-	1.486
Mercedes-Benz	9.043	480	646	1.121	1.206	1.204	328	404	476	382	317	-	-	6.564
Mitsubishi	3.527	158	347	403	669	184	108	303	369	181	94	-	-	2.816
Nissan	2.779	95	154	197	165	116	94	79	61	33	58	-	-	1.052
Peugeot	10.458	178	277	485	517	404	338	621	289	261	227	-	-	3.597
Renault	16.822	512	793	1.087	1.127	969	705	660	468	435	297	-	-	7.053
Ssangyong	255	5	1	6	8	12	21	47	27	-	1	-	-	128
Toyota	4.551	210	267	310	652	352	180	128	174	194	103	-	-	2.570
Volkswagen	27.793	1.630	1.516	1.974	1.989	1.931	1.093	1.298	1.018	476	499	-	-	13.424
GENEL TOPLAM - Grand Total	109.920	4.329	5.382	7.691	8.274	7.298	4.567	5.247	4.169	3.052	2.550	-	-	52.559