



OTOMOTİV SANAYİİ DERNEĞİ
AUTOMOTIVE MANUFACTURERS ASSOCIATION

OTOMOTİV SEKTÖRÜ AYLIK DEĞERLENDİRME RAPORU KASIM 2018

AUTOMOTIVE INDUSTRY MONTHLY REPORT
November 2018

OSD "OICA" Üyesidir



OSD is a Member of "OICA"

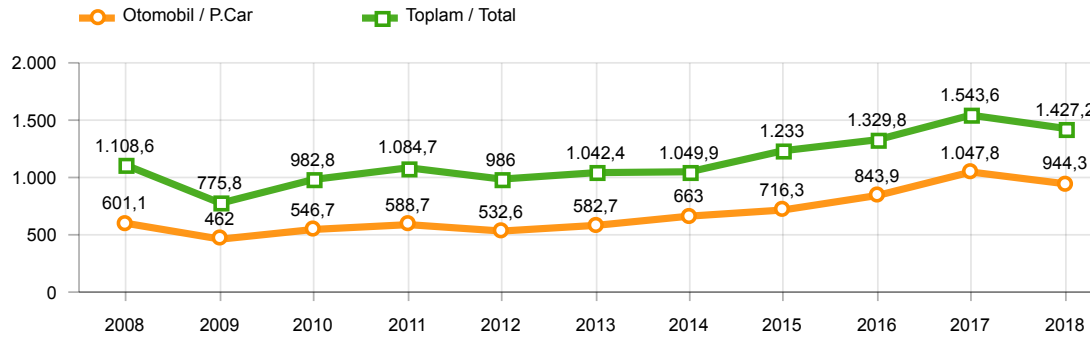
| | 11 - 2017 | 11 - 2018 | % | 1 - 11 / 2017 | 1 - 11 / 2018 | % | 12/2016 - 11/2017 | 12/2017 - 11/2018 | % |
|--|---------------|---------------|-------|----------------|----------------|-------|-------------------|-------------------|-------|
| Otomobil Üretimi/P.Cars Production | 106.487 | 85.666 | -19,6 | 1.047.846 | 944.304 | -9,9 | 1.154.809 | 1.039.364 | -10,0 |
| Toplam Üretim/Total Production | 163.459 | 128.875 | -21,2 | 1.543.585 | 1.427.157 | -7,5 | 1.699.700 | 1.579.303 | -7,1 |
| Otomobil Pazarı/P.Cars Market | 75.956 | 46.204 | -39,2 | 623.065 | 425.478 | -31,7 | 731.109 | 525.172 | -28,2 |
| Toplam Pazar/Total Market | 103.772 | 59.495 | -42,7 | 845.322 | 561.639 | -33,6 | 991.028 | 703.146 | -29,0 |
| Otomobil İthalatı/P.Cars Import | 55.400 | 31.804 | -42,6 | 437.904 | 284.383 | -35,1 | 512.969 | 352.447 | -31,3 |
| Toplam İthalat/Total Import | 67.040 | 39.083 | -41,7 | 539.773 | 349.968 | -35,2 | 631.767 | 434.682 | -31,2 |
| Otomobil İhracatı/P.Cars Export | 83.223 | 77.912 | -6,4 | 852.318 | 810.054 | -5,0 | 939.425 | 879.090 | -6,4 |
| Toplam İhracat/Total Export | 120.900 | 119.851 | -0,9 | 1.224.244 | 1.219.174 | -0,4 | 1.343.146 | 1.327.724 | -1,1 |
| Otomobil İhracatı(\$)/P.Cars Export (\$) | 1.075.645.028 | 1.099.641.986 | 2,2 | 10.803.136.878 | 11.426.614.708 | 5,8 | 11.889.792.148 | 12.414.055.588 | 4,4 |
| Toplam İhracat(\$)/Total Export (\$)* | 2.705.813.583 | 2.826.549.677 | 4,5 | 26.558.349.702 | 29.725.086.708 | 11,9 | 28.909.012.682 | 32.259.871.451 | 11,6 |

| Parametreler/Parameters | 11 - 2017 | 11 - 2018 | % | 1 - 11 / 2017 | 1 - 11 / 2018 | % | 12/2016 - 11/2017 | 12/2017 - 11/2018 | % |
|---------------------------------|-----------|-----------|------|---------------|---------------|------|-------------------|-------------------|------|
| ÜFE / PPI | 2,0 | -2,5 | - | 13,9 | 36,7 | - | 15,4 | 25,5 | - |
| TÜFE / CPI | 1,5 | -1,4 | - | 11,2 | 20,8 | - | 10,9 | 15,6 | - |
| Sanayi Endeksi / Industry Index | 2,4 | -3,1 | - | 15,1 | 33,2 | - | 17,2 | 25,5 | - |
| Dolar \$ ** | 3,9 | 5,4 | 38,5 | 3,6 | 4,7 | 31,5 | 3,6 | 4,7 | 29,8 |
| Euro € ** | 4,5 | 6,1 | 34,1 | 4,1 | 5,6 | 37,9 | 4,0 | 5,5 | 36,9 |
| Japon Yeni ¥ ** | 3,4 | 4,7 | 38,4 | 3,2 | 4,3 | 33,4 | 3,2 | 4,2 | 31,8 |

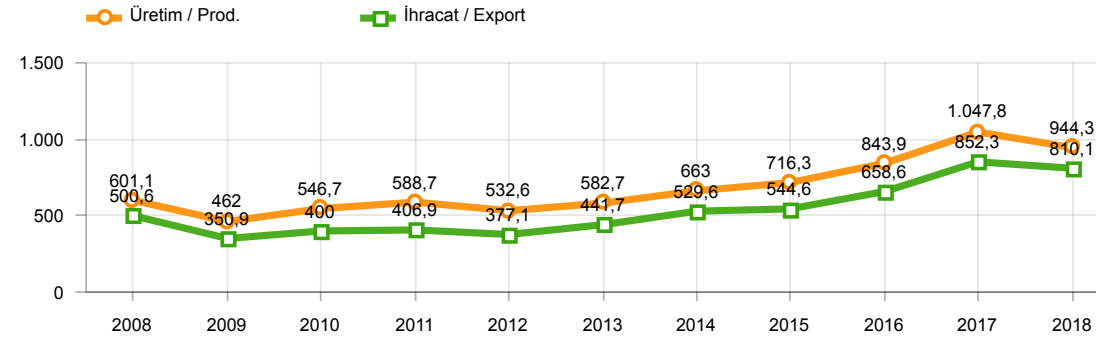
*Toplam Sanayi / Total Industry Including Components
** Ortalama Değerler / Average Values

| Araç Tipleri / Types | 11 / 2017 | 11 / 2018 | 11 % Değişim | 1-11 / 2017 | 1-11 / 2018 | 1-11 % Değişim |
|--|----------------|----------------|--------------|------------------|------------------|----------------|
| OTOMOBİL / Pass.Car | 106.487 | 85.666 | -19,6 | 1.047.846 | 944.304 | -9,9 |
| OTOMOBİL Toplam / Pass.Car Total | 106.487 | 85.666 | -19,6 | 1.047.846 | 944.304 | -9,9 |
| B.KAMYON / H. Truck | 2.443 | 1.316 | -46,1 | 17.168 | 21.701 | 26,4 |
| K.KAMYON / L. Truck | 568 | 84 | -85,2 | 3.633 | 2.359 | -35,1 |
| KAMYONET / Pick Up | 47.732 | 35.072 | -26,5 | 413.693 | 396.526 | -4,1 |
| OTOBÜS / Bus | 588 | 816 | 38,8 | 7.609 | 7.764 | 2,0 |
| MİNİBÜS / Minibus | 5.144 | 5.724 | 11,3 | 50.367 | 51.360 | 2,0 |
| MİDİBÜS / Midibus | 497 | 197 | -60,4 | 3.269 | 3.143 | -3,9 |
| TİCARİ ARAÇLAR Toplam / Commercial Vehicles Total | 56.972 | 43.209 | -24,2 | 495.739 | 482.853 | -2,6 |
| TAŞIT ARAÇLARI Toplam / Motor Vehicles Total | 163.459 | 128.875 | -21,2 | 1.543.585 | 1.427.157 | -7,5 |
| TRAKTÖR / F.Tractor | 5.280 | 1.802 | -65,9 | 49.196 | 36.246 | -26,3 |
| TRAKTÖR Toplam / F.Tractor Total | 5.280 | 1.802 | -65,9 | 49.196 | 36.246 | -26,3 |
| GENEL TOPLAM / Grand Total | 168.739 | 130.677 | -22,6 | 1.592.781 | 1.463.403 | -8,1 |

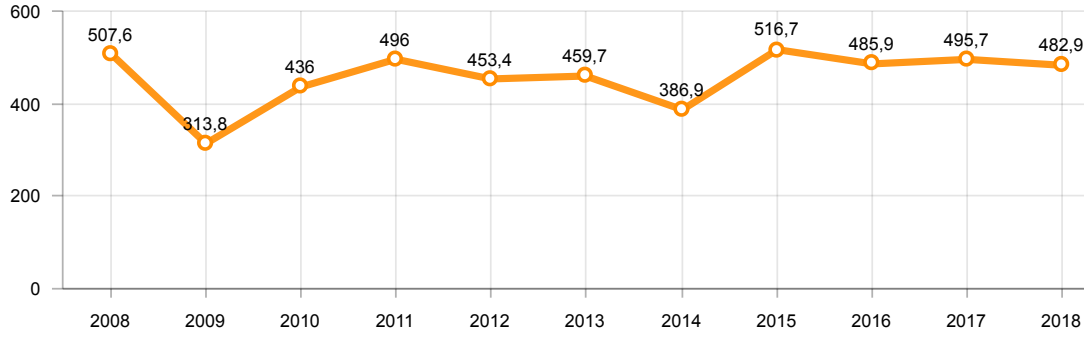
Toplam Üretim ve Otomobil Üretimi (x1000)(OCAK - KASIM)
Total & P.Cars Production (x1000)(January - November)



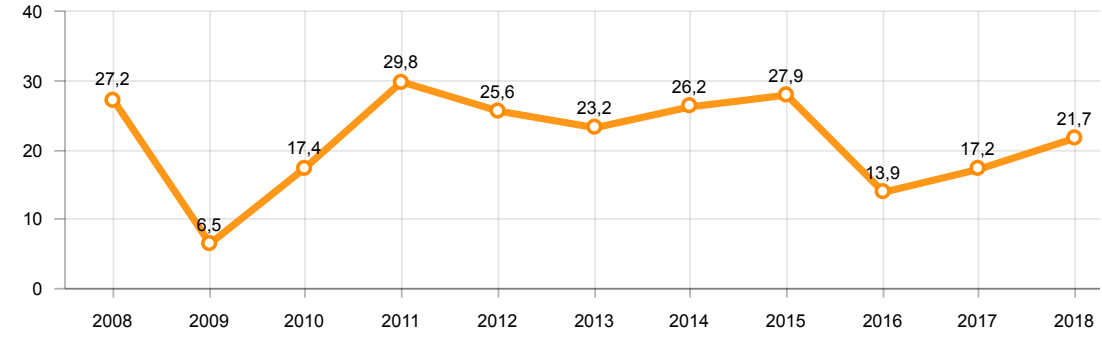
Otomobil Üretimi ve İhracat (x1000)(OCAK - KASIM)
P.Cars Production & Exports (x1000)(January - November)



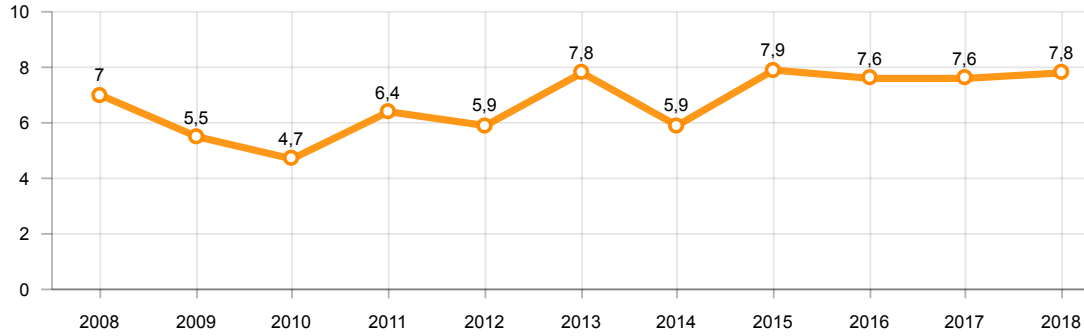
Ticari Araç Üretimi (x1000)(OCAK - KASIM)
Commercial Vehicle Production (x1000)(January - November)



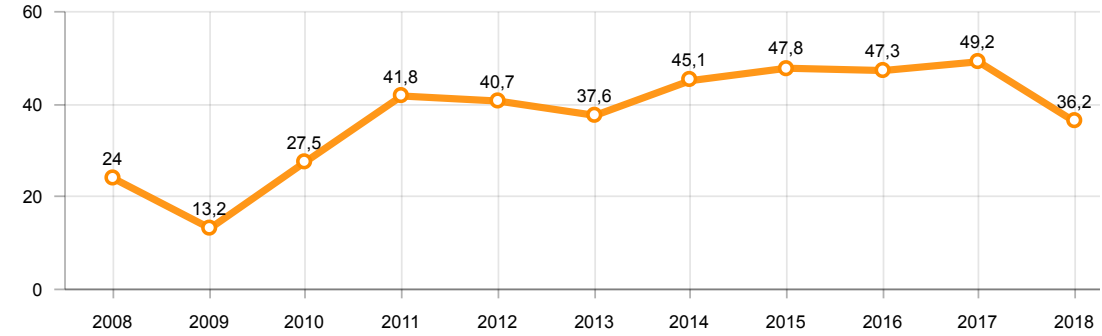
Büyük Kamyon Üretimi (x1000)(OCAK - KASIM)
Heavy Truck Production (x1000)(January - November)



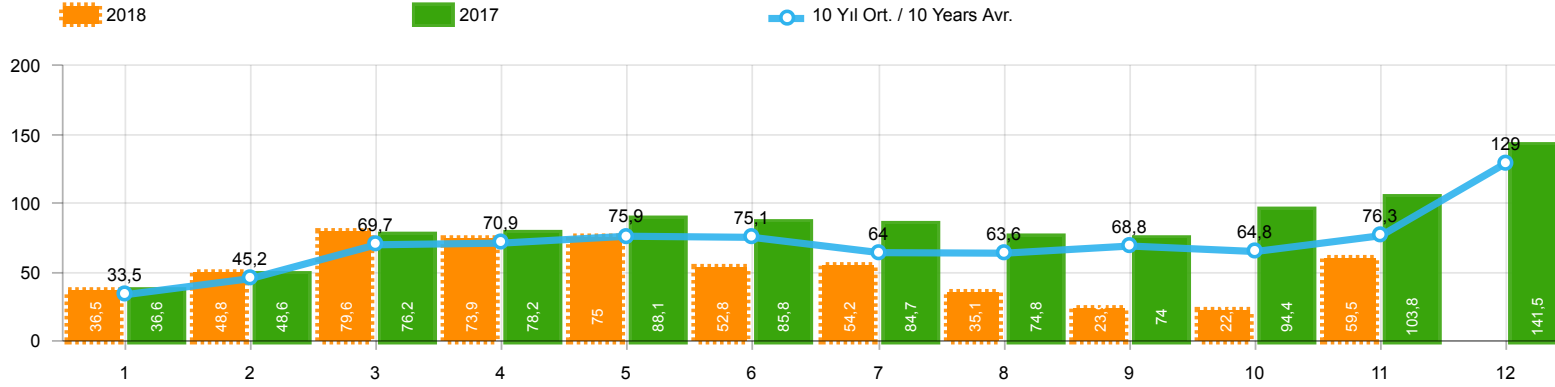
Otobüs Üretimi (x1000)(OCAK - KASIM)
Bus Production (x1000)(January - November)



Traktör Üretimi (x1000)(OCAK - KASIM)
F. Tractor Production (x1000)(January - November)

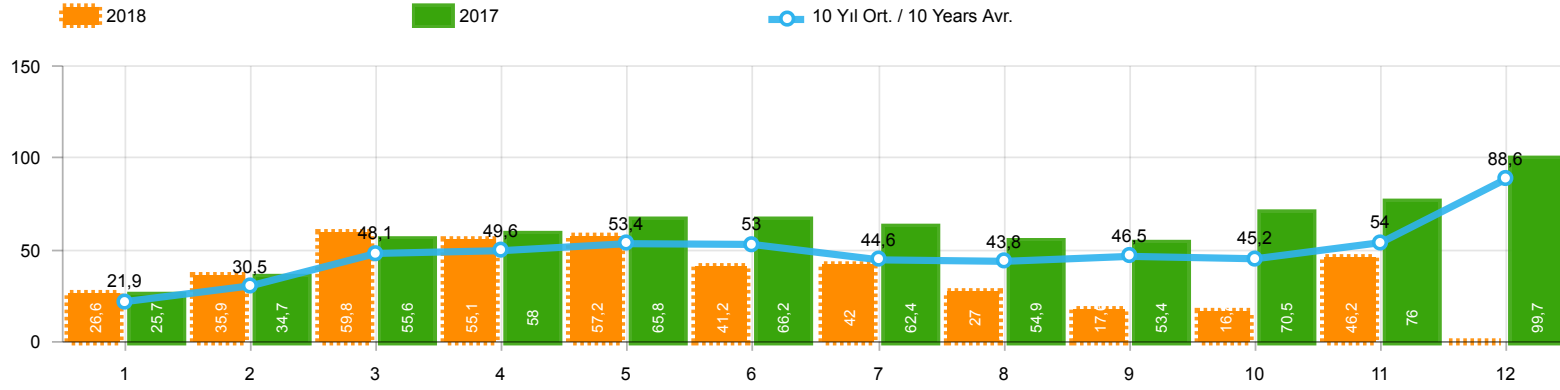


Toplam Pazarın Analizi(x1000)(OCAK - KASIM)
Total Market Analysis(x1000)(January - November)



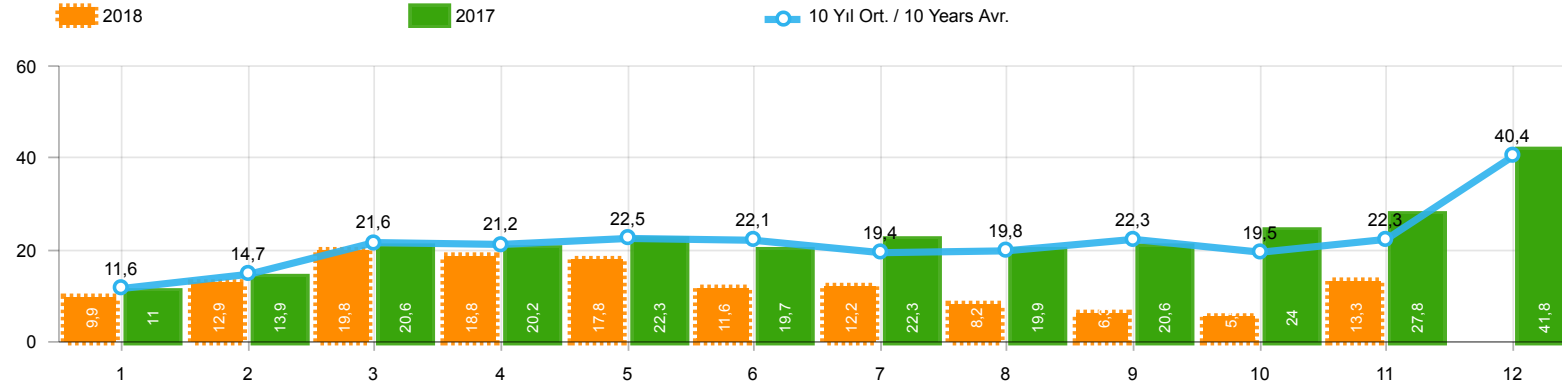
| Aylar / Months | 10 Yıl Ort / 10 Years Avr. | 2018 | % |
|----------------|----------------------------|---------|-------|
| 1 | 33.545 | 36.536 | 8,9 |
| 2 | 45.155 | 48.768 | 8,0 |
| 3 | 69.683 | 79.600 | 14,2 |
| 4 | 70.861 | 73.886 | 4,3 |
| 5 | 75.885 | 74.996 | -1,2 |
| 6 | 75.097 | 52.788 | -29,7 |
| 7 | 63.986 | 54.194 | -15,3 |
| 8 | 63.599 | 35.137 | -44,8 |
| 9 | 68.790 | 23.918 | -65,2 |
| 10 | 64.788 | 22.321 | -65,5 |
| 11 | 76.294 | 59.495 | -22,0 |
| TOPLAM / TOTAL | 707.681 | 561.639 | -20,6 |

| Yıl / Year | 1 | 2 | 3 | 4 | 5 | 6 | 7 | 8 | 9 | 10 | 11 | 12 | 1-11 Toplam / Total | Toplam / Total | 1-11 Yerli / Local | 1-11 İthal / Import | İthal Oran / Import % |
|------------|--------|--------|--------|--------|--------|--------|--------|--------|--------|--------|---------|---------|---------------------|----------------|--------------------|---------------------|-----------------------|
| 2008 | 33.882 | 38.187 | 56.863 | 51.052 | 51.762 | 49.371 | 44.634 | 46.679 | 46.696 | 35.152 | 28.291 | 44.296 | 482.569 | 526.865 | 204.598 | 277.971 | 57,6 |
| 2009 | 20.605 | 22.873 | 56.527 | 54.433 | 64.947 | 63.090 | 30.374 | 37.038 | 83.553 | 22.191 | 29.309 | 91.762 | 484.940 | 576.702 | 218.179 | 266.761 | 55,0 |
| 2010 | 21.070 | 32.331 | 54.019 | 57.241 | 61.837 | 63.511 | 64.011 | 64.961 | 67.040 | 76.753 | 77.488 | 155.234 | 640.262 | 795.496 | 267.380 | 372.882 | 58,2 |
| 2011 | 47.759 | 62.586 | 84.045 | 82.782 | 85.862 | 85.992 | 65.658 | 61.645 | 64.313 | 73.227 | 67.150 | 134.468 | 781.019 | 915.487 | 318.300 | 462.719 | 59,2 |
| 2012 | 31.552 | 44.138 | 69.242 | 66.559 | 75.195 | 75.108 | 65.444 | 60.982 | 73.501 | 62.933 | 75.203 | 121.442 | 699.857 | 821.299 | 262.844 | 437.013 | 62,4 |
| 2013 | 37.563 | 51.133 | 72.943 | 77.265 | 85.835 | 78.043 | 75.152 | 67.662 | 71.388 | 60.690 | 83.470 | 136.048 | 761.144 | 897.192 | 236.843 | 524.301 | 68,9 |
| 2014 | 34.751 | 37.659 | 51.312 | 57.113 | 62.447 | 64.295 | 62.770 | 63.303 | 70.764 | 69.742 | 84.368 | 154.843 | 658.524 | 813.367 | 228.777 | 429.747 | 65,3 |
| 2015 | 37.256 | 59.221 | 89.765 | 96.182 | 85.804 | 91.071 | 87.358 | 85.244 | 67.181 | 67.086 | 88.431 | 164.464 | 854.599 | 1.019.063 | 294.603 | 559.996 | 65,5 |
| 2016 | 34.369 | 54.840 | 85.932 | 87.748 | 97.090 | 94.666 | 59.732 | 73.654 | 69.413 | 85.666 | 125.462 | 145.706 | 868.572 | 1.014.278 | 279.298 | 589.274 | 67,8 |
| 2017 | 36.640 | 48.585 | 76.178 | 78.231 | 88.066 | 85.820 | 84.727 | 74.818 | 74.046 | 94.439 | 103.772 | 141.507 | 845.322 | 986.829 | 305.549 | 539.773 | 63,9 |
| 2018 | 36.536 | 48.768 | 79.600 | 73.886 | 74.996 | 52.788 | 54.194 | 35.137 | 23.918 | 22.321 | 59.495 | | 561.639 | 561.639 | 211.671 | 349.968 | 62,3 |



| Aylar / Months | 10 Yıl Ort. / 10 Years Avr. | 2018 | % |
|-----------------------|-----------------------------|----------------|--------------|
| 1 | 21.905 | 26.611 | 21,5 |
| 2 | 30.458 | 35.901 | 17,9 |
| 3 | 48.088 | 59.798 | 24,4 |
| 4 | 49.614 | 55.108 | 11,1 |
| 5 | 53.417 | 57.227 | 7,1 |
| 6 | 53.000 | 41.225 | -22,2 |
| 7 | 44.610 | 42.024 | -5,8 |
| 8 | 43.833 | 26.976 | -38,5 |
| 9 | 46.505 | 17.595 | -62,2 |
| 10 | 45.241 | 16.809 | -62,8 |
| 11 | 54.024 | 46.204 | -14,5 |
| TOPLAM / TOTAL | 490.695 | 425.478 | -13,3 |

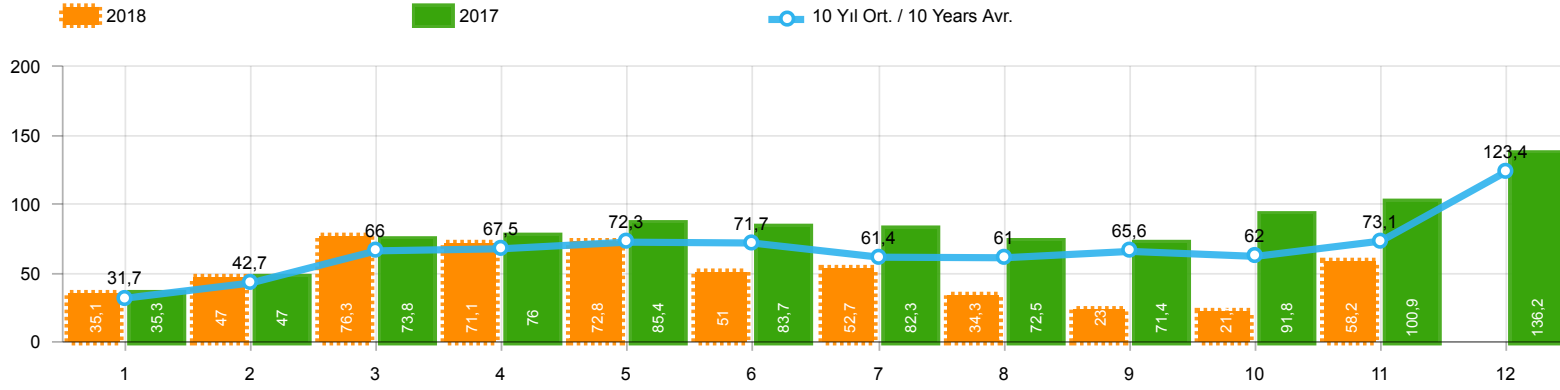
| Yıl / Year | 1 | 2 | 3 | 4 | 5 | 6 | 7 | 8 | 9 | 10 | 11 | 12 | 1-11 Toplam / Total | Toplam / Total | 1-11 Yerli / Local | 1-11 İthal / Import | İthal Oran / Import % |
|------------|--------|--------|--------|--------|--------|--------|--------|--------|--------|--------|--------|---------|---------------------|----------------|--------------------|---------------------|-----------------------|
| 2008 | 18.588 | 21.196 | 34.147 | 30.313 | 31.477 | 28.724 | 25.530 | 26.102 | 27.053 | 19.788 | 17.201 | 25.879 | 280.119 | 305.998 | 91.347 | 188.772 | 67,4 |
| 2009 | 13.173 | 14.492 | 40.622 | 36.202 | 44.188 | 41.019 | 16.637 | 22.537 | 52.162 | 13.828 | 17.781 | 57.178 | 312.641 | 369.819 | 104.322 | 208.319 | 66,6 |
| 2010 | 12.594 | 20.651 | 33.958 | 36.549 | 40.467 | 42.086 | 41.399 | 42.222 | 42.477 | 47.859 | 50.061 | 99.461 | 410.323 | 509.784 | 126.084 | 284.239 | 69,3 |
| 2011 | 29.868 | 39.004 | 54.023 | 53.835 | 56.302 | 56.714 | 43.518 | 38.875 | 39.964 | 47.508 | 44.951 | 88.957 | 504.562 | 593.519 | 154.660 | 349.902 | 69,3 |
| 2012 | 21.077 | 29.189 | 47.270 | 45.645 | 50.460 | 50.849 | 44.531 | 41.236 | 49.360 | 43.440 | 52.297 | 80.926 | 475.354 | 556.280 | 127.535 | 347.819 | 73,2 |
| 2013 | 25.835 | 36.814 | 51.785 | 56.999 | 62.383 | 58.290 | 55.712 | 51.611 | 52.925 | 46.985 | 64.117 | 101.199 | 563.456 | 664.655 | 124.906 | 438.550 | 77,8 |
| 2014 | 24.368 | 27.167 | 37.812 | 42.769 | 46.379 | 47.278 | 46.602 | 45.131 | 49.262 | 50.814 | 59.695 | 110.054 | 477.277 | 587.331 | 125.260 | 352.017 | 73,8 |
| 2015 | 24.498 | 40.817 | 61.676 | 70.211 | 62.878 | 67.766 | 64.218 | 61.753 | 47.088 | 47.954 | 62.397 | 114.340 | 611.256 | 725.596 | 153.170 | 458.086 | 74,9 |
| 2016 | 23.358 | 40.588 | 63.975 | 65.618 | 73.832 | 71.111 | 45.566 | 53.977 | 51.340 | 63.746 | 95.783 | 108.044 | 648.894 | 756.938 | 158.914 | 489.980 | 75,5 |
| 2017 | 25.689 | 34.658 | 55.616 | 57.998 | 65.799 | 66.164 | 62.384 | 54.890 | 53.423 | 70.488 | 75.956 | 99.694 | 623.065 | 722.759 | 185.161 | 437.904 | 70,3 |
| 2018 | 26.611 | 35.901 | 59.798 | 55.108 | 57.227 | 41.225 | 42.024 | 26.976 | 17.595 | 16.809 | 46.204 | | 425.478 | 425.478 | 141.095 | 284.383 | 66,8 |



| Aylar / Months | 10 Yıl Ort. / 10 Years Avr. | 2018 | % |
|----------------|-----------------------------|---------|-------|
| 1 | 11.640 | 9.925 | -14,7 |
| 2 | 14.698 | 12.867 | -12,5 |
| 3 | 21.594 | 19.802 | -8,3 |
| 4 | 21.247 | 18.778 | -11,6 |
| 5 | 22.468 | 17.769 | -20,9 |
| 6 | 22.097 | 11.563 | -47,7 |
| 7 | 19.376 | 12.170 | -37,2 |
| 8 | 19.765 | 8.161 | -58,7 |
| 9 | 22.284 | 6.323 | -71,6 |
| 10 | 19.547 | 5.512 | -71,8 |
| 11 | 22.271 | 13.291 | -40,3 |
| TOPLAM / TOTAL | 216.986 | 136.161 | -37,3 |

| Yıl / Year | 1 | 2 | 3 | 4 | 5 | 6 | 7 | 8 | 9 | 10 | 11 | 12 | 1-11 Toplam / Total | Toplam / Total | 1-11 Yerli / Local | 1-11 İthal / Import | İthal Oran / Import % |
|------------|--------|--------|--------|--------|--------|--------|--------|--------|--------|--------|--------|--------|---------------------|----------------|--------------------|---------------------|-----------------------|
| 2008 | 15.294 | 16.991 | 22.716 | 20.739 | 20.285 | 20.647 | 19.104 | 20.577 | 19.643 | 15.364 | 11.090 | 18.417 | 202.450 | 220.867 | 113.251 | 89.199 | 44,1 |
| 2009 | 7.432 | 8.381 | 15.905 | 18.231 | 20.759 | 22.071 | 13.737 | 14.501 | 31.391 | 8.363 | 11.528 | 34.584 | 172.299 | 206.883 | 113.857 | 58.442 | 33,9 |
| 2010 | 8.476 | 11.680 | 20.061 | 20.692 | 21.370 | 21.425 | 22.612 | 22.739 | 24.563 | 28.894 | 27.427 | 55.773 | 229.939 | 285.712 | 141.296 | 88.643 | 38,6 |
| 2011 | 17.891 | 23.582 | 30.022 | 28.947 | 29.560 | 29.278 | 22.140 | 22.770 | 24.349 | 25.719 | 22.199 | 45.511 | 276.457 | 321.968 | 163.640 | 112.817 | 40,8 |
| 2012 | 10.475 | 14.949 | 21.972 | 20.914 | 24.735 | 24.259 | 20.913 | 19.746 | 24.141 | 19.493 | 22.906 | 40.516 | 224.503 | 265.019 | 135.309 | 89.194 | 39,7 |
| 2013 | 11.728 | 14.319 | 21.158 | 20.266 | 23.452 | 19.753 | 19.440 | 16.051 | 18.463 | 13.705 | 19.353 | 34.849 | 197.688 | 232.537 | 111.937 | 85.751 | 43,4 |
| 2014 | 10.383 | 10.492 | 13.500 | 14.344 | 16.068 | 17.017 | 16.168 | 18.172 | 21.502 | 18.928 | 24.673 | 44.789 | 181.247 | 226.036 | 103.517 | 77.730 | 42,9 |
| 2015 | 12.758 | 18.404 | 28.089 | 25.971 | 22.926 | 23.305 | 23.140 | 23.491 | 20.093 | 19.132 | 26.034 | 50.124 | 243.343 | 293.467 | 141.433 | 101.910 | 41,9 |
| 2016 | 11.011 | 14.252 | 21.957 | 22.130 | 23.258 | 23.555 | 14.166 | 19.677 | 18.073 | 21.920 | 29.679 | 37.662 | 219.678 | 257.340 | 120.384 | 99.294 | 45,2 |
| 2017 | 10.951 | 13.927 | 20.562 | 20.233 | 22.267 | 19.656 | 22.343 | 19.928 | 20.623 | 23.951 | 27.816 | 41.813 | 222.257 | 264.070 | 120.388 | 101.869 | 45,8 |
| 2018 | 9.925 | 12.867 | 19.802 | 18.778 | 17.769 | 11.563 | 12.170 | 8.161 | 6.323 | 5.512 | 13.291 | | 136.161 | 136.161 | 70.576 | 65.585 | 48,2 |

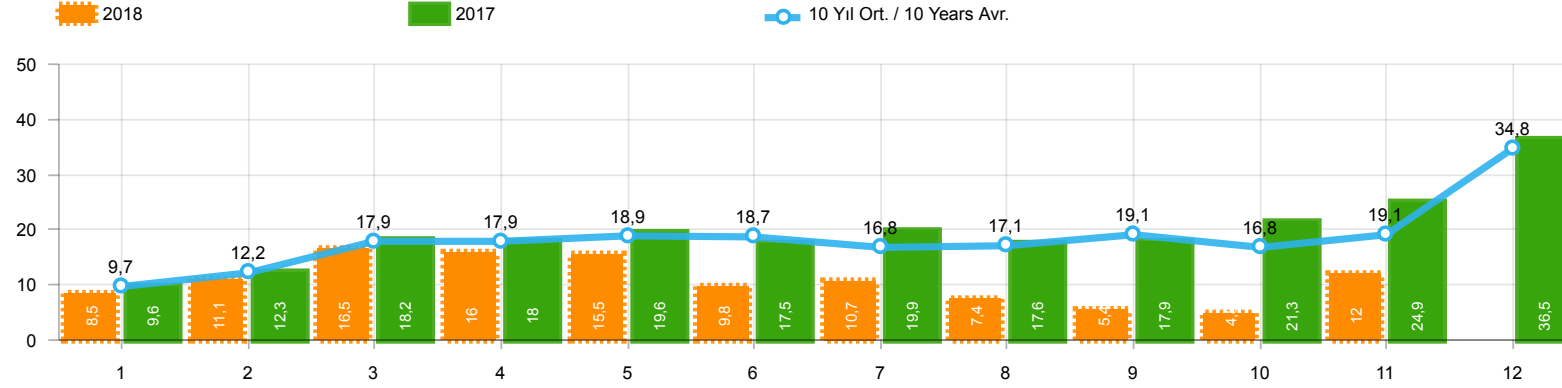
Hafif Araç Pazarının Analizi(x1000)(OCAK - KASIM)
LV Market Analysis(x1000)(January - November)



| Aylar / Months | 10 Yıl Ort / 10 Years Avr. | 2018 | % |
|----------------|----------------------------|---------|-------|
| 1 | 31.651 | 35.076 | 10,8 |
| 2 | 42.660 | 47.009 | 10,2 |
| 3 | 66.022 | 76.345 | 15,6 |
| 4 | 67.529 | 71.126 | 5,3 |
| 5 | 72.313 | 72.755 | 0,6 |
| 6 | 71.654 | 51.037 | -28,8 |
| 7 | 61.386 | 52.734 | -14,1 |
| 8 | 60.951 | 34.346 | -43,6 |
| 9 | 65.637 | 23.028 | -64,9 |
| 10 | 62.027 | 21.571 | -65,2 |
| 11 | 73.124 | 58.204 | -20,4 |
| TOPLAM / TOTAL | 674.954 | 543.231 | -19,5 |

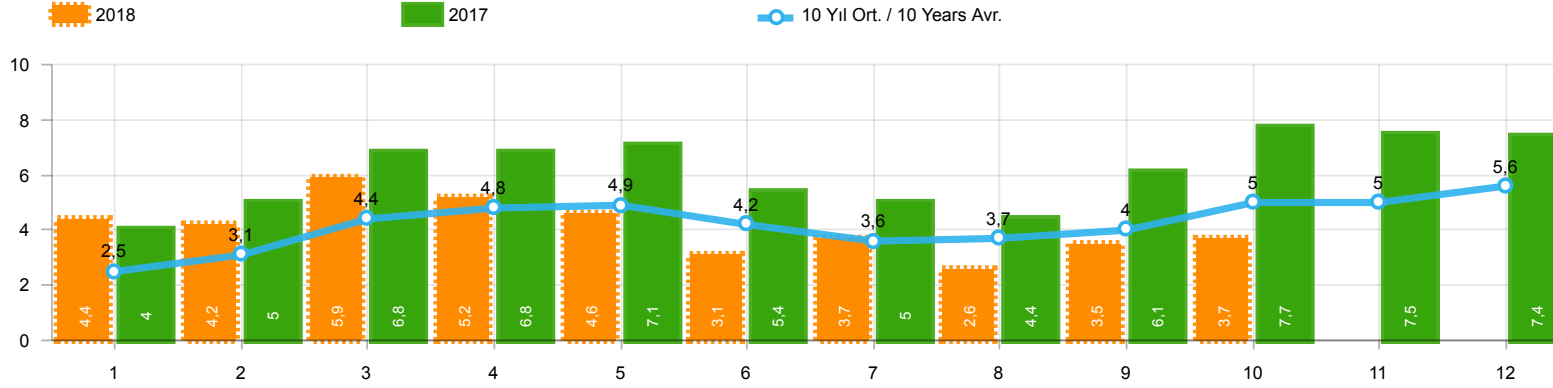
| Yıl / Year | 1 | 2 | 3 | 4 | 5 | 6 | 7 | 8 | 9 | 10 | 11 | 12 | 1-11 Toplam / Total | Toplam / Total | 1-11 Yerli / Local | 1-11 İthal / Import | İthal Oran / Import % |
|------------|--------|--------|--------|--------|--------|--------|--------|--------|--------|--------|---------|---------|---------------------|----------------|--------------------|---------------------|-----------------------|
| 2008 | 31.527 | 35.251 | 53.649 | 47.701 | 48.598 | 46.324 | 42.156 | 43.670 | 43.932 | 32.884 | 26.253 | 42.078 | 451.945 | 494.023 | 179.578 | 272.367 | 60,3 |
| 2009 | 19.606 | 21.742 | 55.111 | 52.640 | 63.191 | 61.067 | 28.845 | 35.609 | 81.397 | 21.033 | 27.962 | 88.923 | 468.203 | 557.126 | 204.509 | 263.694 | 56,3 |
| 2010 | 20.095 | 31.172 | 51.769 | 54.946 | 59.377 | 60.896 | 61.345 | 61.764 | 63.814 | 73.404 | 73.962 | 148.369 | 612.544 | 760.913 | 246.963 | 365.581 | 59,7 |
| 2011 | 44.892 | 58.663 | 78.403 | 77.695 | 80.646 | 81.573 | 63.044 | 58.406 | 60.129 | 69.421 | 63.657 | 127.910 | 736.529 | 864.439 | 287.751 | 448.778 | 60,9 |
| 2012 | 29.545 | 41.324 | 64.884 | 62.949 | 70.863 | 71.067 | 62.304 | 58.148 | 69.629 | 59.938 | 71.710 | 115.400 | 662.361 | 777.761 | 235.644 | 426.717 | 64,4 |
| 2013 | 35.523 | 48.307 | 68.774 | 73.575 | 81.468 | 74.096 | 71.596 | 65.043 | 67.963 | 58.014 | 79.301 | 129.718 | 723.660 | 853.378 | 208.198 | 515.462 | 71,2 |
| 2014 | 32.670 | 35.021 | 47.581 | 53.305 | 58.121 | 60.163 | 59.907 | 60.199 | 66.531 | 66.573 | 80.621 | 146.989 | 620.692 | 767.681 | 200.483 | 420.209 | 67,7 |
| 2015 | 34.615 | 55.331 | 83.302 | 91.602 | 81.542 | 86.158 | 83.836 | 82.577 | 64.025 | 64.255 | 84.601 | 156.173 | 811.844 | 968.017 | 263.268 | 548.576 | 67,6 |
| 2016 | 32.713 | 52.825 | 82.948 | 84.887 | 93.904 | 91.540 | 58.533 | 71.556 | 67.593 | 83.000 | 122.309 | 141.912 | 841.808 | 983.720 | 259.634 | 582.174 | 69,2 |
| 2017 | 35.323 | 46.965 | 73.802 | 75.988 | 85.422 | 83.658 | 82.297 | 72.536 | 71.352 | 91.752 | 100.859 | 136.240 | 819.954 | 956.194 | 287.420 | 532.534 | 64,9 |
| 2018 | 35.076 | 47.009 | 76.345 | 71.126 | 72.755 | 51.037 | 52.734 | 34.346 | 23.028 | 21.571 | 58.204 | | 543.231 | 543.231 | 199.421 | 343.810 | 63,3 |

Hafif Ticari Araç Pazarının Analizi(x1000)(OCAK - KASIM) LCV Market Analysis(x1000)(January - November)



| Aylar / Months | 10 Yıl Ort. / 10 Years Avr. | 2018 | % |
|----------------|-----------------------------|---------|-------|
| 1 | 9.746 | 8.465 | -13,1 |
| 2 | 12.203 | 11.108 | -9,0 |
| 3 | 17.934 | 16.547 | -7,7 |
| 4 | 17.915 | 16.018 | -10,6 |
| 5 | 18.897 | 15.528 | -17,8 |
| 6 | 18.654 | 9.812 | -47,4 |
| 7 | 16.777 | 10.710 | -36,2 |
| 8 | 17.117 | 7.370 | -56,9 |
| 9 | 19.131 | 5.433 | -71,6 |
| 10 | 16.786 | 4.762 | -71,6 |
| 11 | 19.100 | 12.000 | -37,2 |
| TOPLAM / TOTAL | 184.259 | 117.753 | -36,1 |

| Yıl / Year | 1 | 2 | 3 | 4 | 5 | 6 | 7 | 8 | 9 | 10 | 11 | 12 | 1-11 Toplam / Total | Toplam / Total | 1-11 Yerli / Local | 1-11 İthal / Import | İthal Oran / Import % |
|------------|--------|--------|--------|--------|--------|--------|--------|--------|--------|--------|--------|--------|---------------------|----------------|--------------------|---------------------|-----------------------|
| 2008 | 12.939 | 14.055 | 19.502 | 17.388 | 17.121 | 17.600 | 16.626 | 17.568 | 16.879 | 13.096 | 9.052 | 16.199 | 171.826 | 188.025 | 88.231 | 83.595 | 48,7 |
| 2009 | 6.433 | 7.250 | 14.489 | 16.438 | 19.003 | 20.048 | 12.208 | 13.072 | 29.235 | 7.205 | 10.181 | 31.745 | 155.562 | 187.307 | 100.187 | 55.375 | 35,6 |
| 2010 | 7.501 | 10.521 | 17.811 | 18.397 | 18.910 | 18.810 | 19.946 | 19.542 | 21.337 | 25.545 | 23.901 | 48.908 | 202.221 | 251.129 | 120.879 | 81.342 | 40,2 |
| 2011 | 15.024 | 19.659 | 24.380 | 23.860 | 24.344 | 24.859 | 19.526 | 19.531 | 20.165 | 21.913 | 18.706 | 38.953 | 231.967 | 270.920 | 133.091 | 98.876 | 42,6 |
| 2012 | 8.468 | 12.135 | 17.614 | 17.304 | 20.403 | 20.218 | 17.773 | 16.912 | 20.269 | 16.498 | 19.413 | 34.474 | 187.007 | 221.481 | 108.109 | 78.898 | 42,2 |
| 2013 | 9.688 | 11.493 | 16.989 | 16.576 | 19.085 | 15.806 | 15.884 | 13.432 | 15.038 | 11.029 | 15.184 | 28.519 | 160.204 | 188.723 | 83.292 | 76.912 | 48,0 |
| 2014 | 8.302 | 7.854 | 9.769 | 10.536 | 11.742 | 12.885 | 13.305 | 15.068 | 17.269 | 15.759 | 20.926 | 36.935 | 143.415 | 180.350 | 75.223 | 68.192 | 47,5 |
| 2015 | 10.117 | 14.514 | 21.626 | 21.391 | 18.664 | 18.392 | 19.618 | 20.824 | 16.937 | 16.301 | 22.204 | 41.833 | 200.588 | 242.421 | 110.098 | 90.490 | 45,1 |
| 2016 | 9.355 | 12.237 | 18.973 | 19.269 | 20.072 | 20.429 | 12.967 | 17.579 | 16.253 | 19.254 | 26.526 | 33.868 | 192.914 | 226.782 | 100.720 | 92.194 | 47,8 |
| 2017 | 9.634 | 12.307 | 18.186 | 17.990 | 19.623 | 17.494 | 19.913 | 17.646 | 17.929 | 21.264 | 24.903 | 36.546 | 196.889 | 233.435 | 102.259 | 94.630 | 48,1 |
| 2018 | 8.465 | 11.108 | 16.547 | 16.018 | 15.528 | 9.812 | 10.710 | 7.370 | 5.433 | 4.762 | 12.000 | | 117.753 | 117.753 | 58.326 | 59.427 | 50,5 |



| Aylar / Months | 10 Yıl Ort / 10 Years Avr. | 2018 | % |
|----------------|----------------------------|--------|-------|
| 1 | 2.510 | 4.362 | 73,8 |
| 2 | 3.127 | 4.179 | 33,7 |
| 3 | 4.447 | 5.925 | 33,2 |
| 4 | 4.833 | 5.216 | 7,9 |
| 5 | 4.934 | 4.584 | -7,1 |
| 6 | 4.201 | 3.146 | -25,1 |
| 7 | 3.594 | 3.654 | 1,7 |
| 8 | 3.680 | 2.587 | -29,7 |
| 9 | 3.987 | 3.541 | -11,2 |
| 10 | 5.007 | 3.698 | -26,1 |
| TOPLAM / TOTAL | 40.319 | 40.892 | 1,4 |

| Yıl / Year | 1 | 2 | 3 | 4 | 5 | 6 | 7 | 8 | 9 | 10 | 11 | 12 | 1-10 Toplam / Total | Toplam / Total |
|------------|-------|-------|-------|-------|-------|-------|-------|-------|-------|-------|-------|-------|---------------------|----------------|
| 2008 | 2.770 | 1.855 | 3.395 | 3.081 | 2.769 | 2.400 | 2.232 | 2.485 | 1.856 | 1.773 | 1.305 | 1.101 | 24.616 | 27.022 |
| 2009 | 717 | 572 | 688 | 1.070 | 1.297 | 1.256 | 1.054 | 1.183 | 1.117 | 1.356 | 1.304 | 2.144 | 10.310 | 13.758 |
| 2010 | 1.111 | 1.991 | 2.330 | 3.039 | 2.567 | 2.638 | 1.965 | 3.019 | 2.806 | 4.424 | 3.978 | 6.168 | 25.890 | 36.036 |
| 2011 | 2.975 | 5.242 | 5.927 | 5.358 | 6.016 | 6.335 | 4.534 | 4.051 | 4.140 | 5.828 | 4.943 | 4.992 | 50.406 | 60.341 |
| 2012 | 2.362 | 1.983 | 4.348 | 6.579 | 6.273 | 4.569 | 3.837 | 3.158 | 3.618 | 4.027 | 4.807 | 4.757 | 40.754 | 50.318 |
| 2013 | 2.161 | 2.432 | 4.005 | 4.585 | 5.616 | 3.136 | 4.574 | 3.408 | 4.935 | 4.762 | 5.781 | 6.891 | 39.614 | 52.286 |
| 2014 | 2.169 | 3.512 | 4.476 | 4.905 | 5.094 | 5.028 | 4.233 | 4.920 | 5.619 | 5.743 | 6.250 | 7.409 | 45.699 | 59.358 |
| 2015 | 3.124 | 3.984 | 5.460 | 6.383 | 6.078 | 5.748 | 4.677 | 5.044 | 4.765 | 7.049 | 6.898 | 7.564 | 52.312 | 66.774 |
| 2016 | 3.739 | 4.731 | 7.067 | 6.546 | 6.575 | 5.543 | 3.833 | 5.134 | 4.945 | 7.372 | 7.090 | 7.603 | 55.485 | 70.178 |
| 2017 | 3.974 | 4.964 | 6.773 | 6.780 | 7.057 | 5.356 | 5.003 | 4.396 | 6.064 | 7.734 | 7.457 | 7.351 | 58.101 | 72.909 |
| 2018 | 4.362 | 4.179 | 5.925 | 5.216 | 4.584 | 3.146 | 3.654 | 2.587 | 3.541 | 3.698 | | | 40.892 | 40.892 |

Kaynak: TÜİK trafik kayıtları.

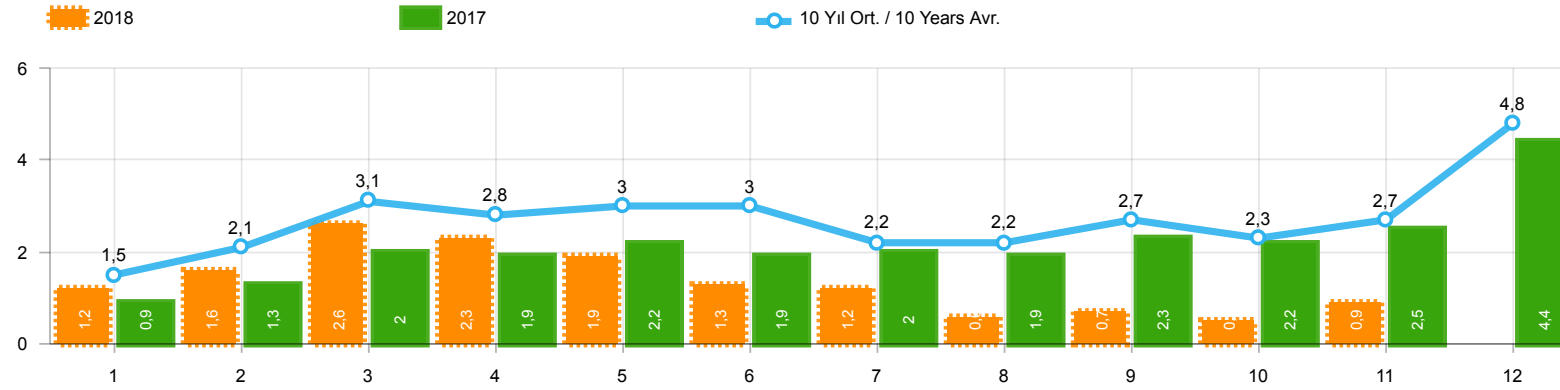
Rakamlar, son iki model yılına ait traktör tescillerinden oluşmaktadır.

Source: Turkish Statistical Institute – Traffic registrations

Data represents the last two model year's farm tractors registration figures

Kamyon Pazarının Analizi(x1000)(OCAK - KASIM)

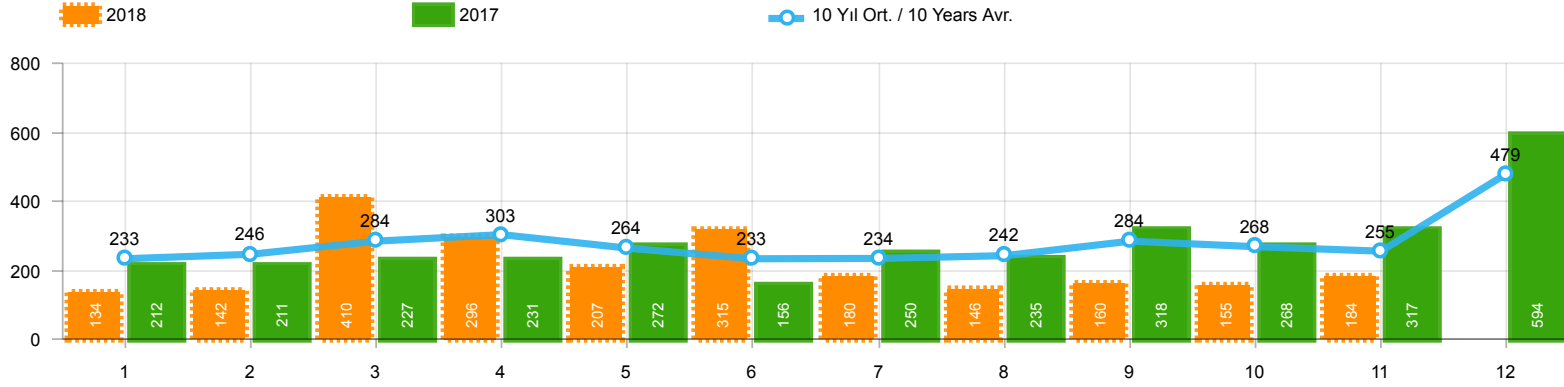
Truck Market Analysis(x1000)(January - November)



| Aylar / Months | 10 Yıl Ort. / 10 Years Avr. | 2018 | % |
|----------------|-----------------------------|--------|-------|
| 1 | 1.505 | 1.248 | -17,1 |
| 2 | 2.053 | 1.552 | -24,4 |
| 3 | 3.131 | 2.630 | -16,0 |
| 4 | 2.777 | 2.328 | -16,2 |
| 5 | 3.005 | 1.909 | -36,5 |
| 6 | 2.955 | 1.272 | -57,0 |
| 7 | 2.196 | 1.235 | -43,8 |
| 8 | 2.232 | 603 | -73,0 |
| 9 | 2.704 | 656 | -75,7 |
| 10 | 2.331 | 488 | -79,1 |
| 11 | 2.739 | 911 | -66,7 |
| TOPLAM / TOTAL | 27.627 | 14.832 | -46,3 |

| Yıl / Year | 1 | 2 | 3 | 4 | 5 | 6 | 7 | 8 | 9 | 10 | 11 | 12 | 1-11 Toplam / Total | Toplam / Total | 1-11 Yerli / Local | 1-11 İthal / Import | İthal Oran / Import % |
|------------|-------|-------|-------|-------|-------|-------|-------|-------|-------|-------|-------|-------|---------------------|----------------|--------------------|---------------------|-----------------------|
| 2008 | 1.829 | 2.350 | 2.655 | 2.644 | 2.513 | 2.515 | 2.048 | 2.498 | 2.241 | 1.816 | 1.674 | 1.770 | 24.783 | 26.553 | 19.240 | 5.543 | 22,4 |
| 2009 | 782 | 763 | 1.062 | 1.381 | 1.426 | 1.649 | 1.261 | 1.164 | 1.862 | 963 | 1.047 | 2.368 | 13.360 | 15.728 | 10.336 | 3.024 | 22,6 |
| 2010 | 768 | 960 | 1.950 | 1.949 | 2.140 | 2.314 | 2.403 | 2.754 | 2.864 | 3.001 | 3.231 | 6.158 | 24.334 | 30.492 | 17.098 | 7.236 | 29,7 |
| 2011 | 2.651 | 3.544 | 5.142 | 4.503 | 4.563 | 3.852 | 2.261 | 2.745 | 3.784 | 3.400 | 3.149 | 5.712 | 39.594 | 45.306 | 25.738 | 13.856 | 35,0 |
| 2012 | 1.703 | 2.454 | 3.866 | 3.209 | 3.678 | 3.540 | 2.750 | 2.403 | 3.296 | 2.497 | 3.154 | 5.300 | 32.550 | 37.850 | 22.288 | 10.262 | 31,5 |
| 2013 | 1.484 | 2.113 | 3.343 | 2.925 | 3.504 | 3.186 | 2.777 | 2.103 | 2.875 | 2.086 | 3.631 | 5.444 | 30.027 | 35.471 | 21.215 | 8.812 | 29,3 |
| 2014 | 1.522 | 2.065 | 3.094 | 3.224 | 3.727 | 3.726 | 2.578 | 2.783 | 3.708 | 2.858 | 3.384 | 6.869 | 32.669 | 39.538 | 23.288 | 9.381 | 28,7 |
| 2015 | 2.215 | 3.346 | 5.699 | 3.729 | 3.600 | 4.253 | 2.922 | 2.211 | 2.687 | 2.266 | 3.146 | 7.307 | 36.074 | 43.381 | 24.723 | 11.351 | 31,5 |
| 2016 | 1.167 | 1.648 | 2.515 | 2.319 | 2.711 | 2.623 | 984 | 1.796 | 1.438 | 2.238 | 2.485 | 3.127 | 21.924 | 25.051 | 14.855 | 7.069 | 32,2 |
| 2017 | 931 | 1.290 | 1.982 | 1.888 | 2.184 | 1.891 | 1.974 | 1.860 | 2.284 | 2.188 | 2.487 | 4.438 | 20.959 | 25.397 | 13.734 | 7.225 | 34,5 |
| 2018 | 1.248 | 1.552 | 2.630 | 2.328 | 1.909 | 1.272 | 1.235 | 603 | 656 | 488 | 911 | | 14.832 | 14.832 | 8.685 | 6.147 | 41,4 |

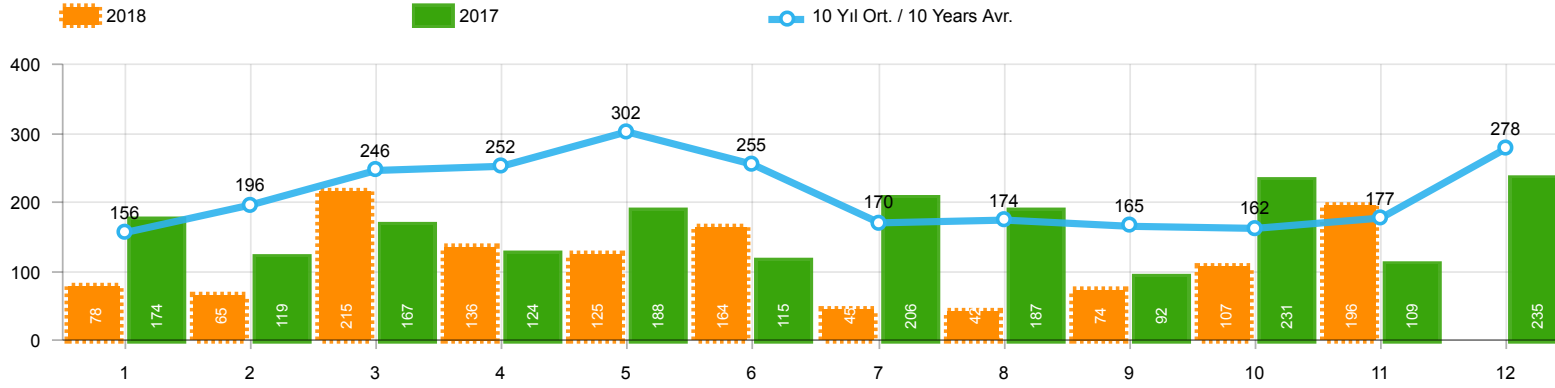
Midibüs Pazarının Analizi(OCAK - KASIM)
Midibus Market Analysis(January - November)



| Aylar / Months | 10 Yıl Ort. / 10 Years Avr. | 2018 | % |
|----------------|-----------------------------|-------|-------|
| 1 | 233 | 134 | -42,5 |
| 2 | 246 | 142 | -42,3 |
| 3 | 284 | 410 | 44,6 |
| 4 | 303 | 296 | -2,4 |
| 5 | 264 | 207 | -21,7 |
| 6 | 233 | 315 | 35,4 |
| 7 | 234 | 180 | -22,9 |
| 8 | 242 | 146 | -39,7 |
| 9 | 284 | 160 | -43,6 |
| 10 | 268 | 155 | -42,1 |
| 11 | 255 | 184 | -27,9 |
| TOPLAM / TOTAL | 2.845 | 2.329 | -18,1 |

| Yıl / Year | 1 | 2 | 3 | 4 | 5 | 6 | 7 | 8 | 9 | 10 | 11 | 12 | 1-11 Toplam / Total | Toplam / Total |
|------------|-----|-----|-----|-----|-----|-----|-----|-----|-----|-----|-----|-----|---------------------|----------------|
| 2008 | 401 | 453 | 365 | 477 | 392 | 292 | 323 | 344 | 316 | 334 | 205 | 208 | 3.902 | 4.110 |
| 2009 | 133 | 103 | 153 | 210 | 145 | 183 | 138 | 146 | 152 | 134 | 150 | 280 | 1.647 | 1.927 |
| 2010 | 140 | 128 | 172 | 153 | 127 | 124 | 93 | 232 | 199 | 204 | 162 | 382 | 1.734 | 2.116 |
| 2011 | 124 | 167 | 267 | 260 | 241 | 233 | 205 | 280 | 270 | 230 | 168 | 525 | 2.445 | 2.970 |
| 2012 | 179 | 257 | 277 | 229 | 257 | 239 | 216 | 249 | 325 | 269 | 189 | 398 | 2.686 | 3.084 |
| 2013 | 191 | 268 | 289 | 276 | 283 | 241 | 367 | 235 | 305 | 392 | 415 | 697 | 3.262 | 3.959 |
| 2014 | 360 | 394 | 384 | 333 | 294 | 258 | 216 | 229 | 395 | 220 | 266 | 653 | 3.349 | 4.002 |
| 2015 | 280 | 322 | 451 | 561 | 372 | 405 | 389 | 253 | 316 | 394 | 325 | 621 | 4.068 | 4.689 |
| 2016 | 309 | 158 | 251 | 302 | 261 | 196 | 139 | 220 | 241 | 230 | 354 | 431 | 2.661 | 3.092 |
| 2017 | 212 | 211 | 227 | 231 | 272 | 156 | 250 | 235 | 318 | 268 | 317 | 594 | 2.697 | 3.291 |
| 2018 | 134 | 142 | 410 | 296 | 207 | 315 | 180 | 146 | 160 | 155 | 184 | | 2.329 | 2.329 |

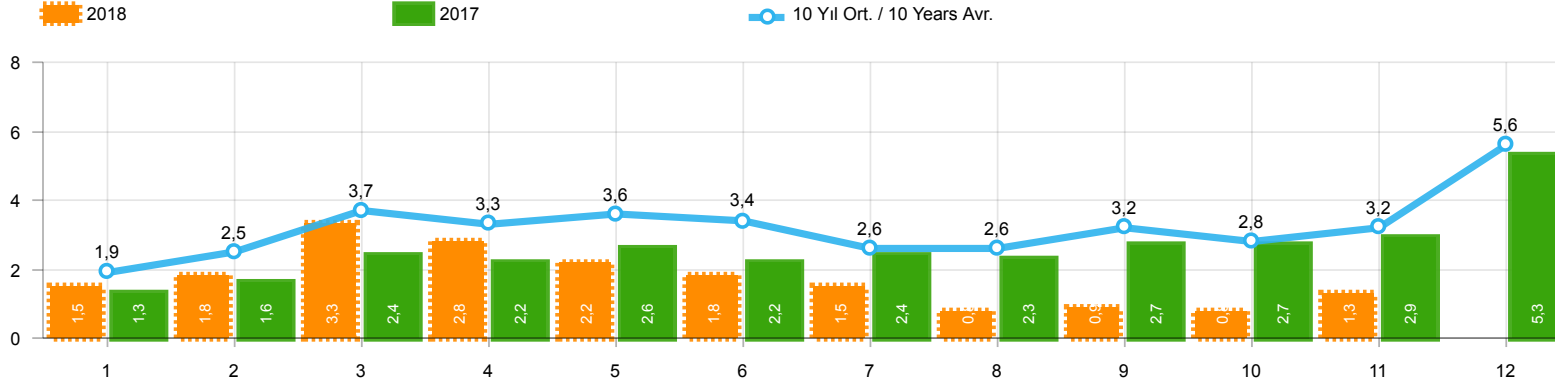
Otobüs Pazarının Analizi(OCAK - KASIM)
Otobus Market Analysis(January - November)



| Aylar / Months | 10 Yıl Ort. / 10 Years Avr. | 2018 | % |
|----------------|-----------------------------|-------|-------|
| 1 | 156 | 78 | -49,9 |
| 2 | 196 | 65 | -66,8 |
| 3 | 246 | 215 | -12,6 |
| 4 | 252 | 136 | -45,9 |
| 5 | 302 | 125 | -58,7 |
| 6 | 255 | 164 | -35,7 |
| 7 | 170 | 45 | -73,6 |
| 8 | 174 | 42 | -75,8 |
| 9 | 165 | 74 | -55,3 |
| 10 | 162 | 107 | -33,8 |
| 11 | 177 | 196 | 10,7 |
| TOPLAM / TOTAL | 2.254 | 1.247 | -44,7 |

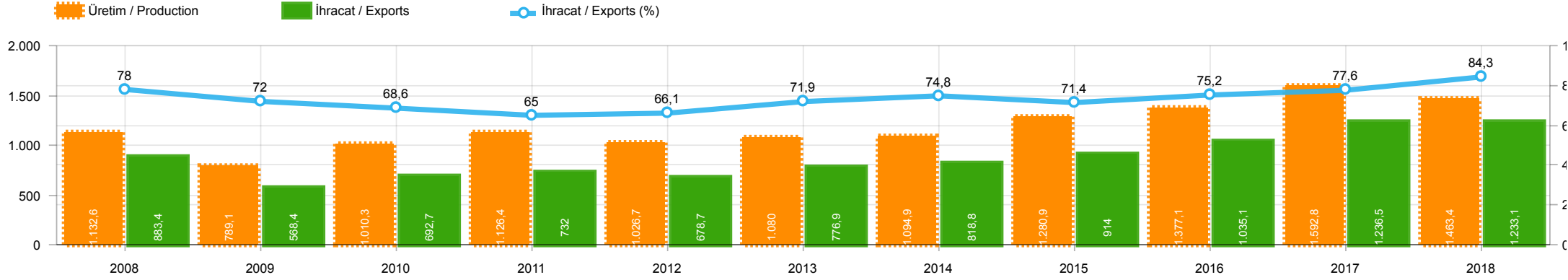
| Yıl / Year | 1 | 2 | 3 | 4 | 5 | 6 | 7 | 8 | 9 | 10 | 11 | 12 | 1-11 Toplam / Total | Toplam / Total | 1-11 Yerli / Local | 1-11 İthal / Import | İthal Oran / Import % |
|------------|-----|-----|-----|-----|-----|-----|-----|-----|-----|-----|-----|-----|---------------------|----------------|--------------------|---------------------|-----------------------|
| 2008 | 125 | 133 | 194 | 230 | 259 | 240 | 107 | 167 | 207 | 118 | 159 | 240 | 1.939 | 2.179 | 1.878 | 61 | 3,1 |
| 2009 | 84 | 265 | 201 | 202 | 185 | 191 | 130 | 119 | 142 | 61 | 150 | 191 | 1.730 | 1.921 | 1.687 | 43 | 2,5 |
| 2010 | 67 | 71 | 128 | 193 | 193 | 177 | 170 | 211 | 163 | 144 | 133 | 325 | 1.650 | 1.975 | 1.585 | 65 | 3,9 |
| 2011 | 92 | 212 | 233 | 324 | 412 | 334 | 148 | 214 | 130 | 176 | 176 | 321 | 2.451 | 2.772 | 2.366 | 85 | 3,5 |
| 2012 | 125 | 103 | 215 | 172 | 397 | 262 | 174 | 182 | 251 | 229 | 150 | 344 | 2.260 | 2.604 | 2.226 | 34 | 1,5 |
| 2013 | 365 | 445 | 537 | 489 | 580 | 520 | 412 | 281 | 245 | 198 | 123 | 189 | 4.195 | 4.384 | 4.168 | 27 | 0,6 |
| 2014 | 199 | 179 | 253 | 251 | 305 | 148 | 69 | 92 | 130 | 91 | 97 | 332 | 1.814 | 2.146 | 1.657 | 157 | 8,7 |
| 2015 | 146 | 222 | 313 | 290 | 290 | 255 | 211 | 203 | 153 | 171 | 359 | 363 | 2.613 | 2.976 | 2.544 | 69 | 2,6 |
| 2016 | 180 | 209 | 218 | 240 | 214 | 307 | 76 | 82 | 141 | 198 | 314 | 236 | 2.179 | 2.415 | 2.148 | 31 | 1,4 |
| 2017 | 174 | 119 | 167 | 124 | 188 | 115 | 206 | 187 | 92 | 231 | 109 | 235 | 1.712 | 1.947 | 1.698 | 14 | 0,8 |
| 2018 | 78 | 65 | 215 | 136 | 125 | 164 | 45 | 42 | 74 | 107 | 196 | | 1.247 | 1.247 | 1.236 | 11 | 0,9 |

Ağır Ticari Araç Pazarının Analizi(x1000)(OCAK - KASIM)
HCV Market Analysis(x1000)(January - November)



| Aylar / Months | 10 Yıl Ort. / 10 Years Avr. | 2018 | % |
|----------------|-----------------------------|--------|-------|
| 1 | 1.894 | 1.460 | -22,9 |
| 2 | 2.495 | 1.759 | -29,5 |
| 3 | 3.660 | 3.255 | -11,1 |
| 4 | 3.332 | 2.760 | -17,2 |
| 5 | 3.571 | 2.241 | -37,2 |
| 6 | 3.443 | 1.751 | -49,1 |
| 7 | 2.600 | 1.460 | -43,8 |
| 8 | 2.648 | 791 | -70,1 |
| 9 | 3.153 | 890 | -71,8 |
| 10 | 2.761 | 750 | -72,8 |
| 11 | 3.171 | 1.291 | -59,3 |
| TOPLAM / TOTAL | 32.727 | 18.408 | -43,8 |

| Yıl / Year | 1 | 2 | 3 | 4 | 5 | 6 | 7 | 8 | 9 | 10 | 11 | 12 | 1-11 Toplam / Total | Toplam / Total | 1-11 Yerli / Local | 1-11 İthal / Import | İthal Oran / Import % |
|------------|-------|-------|-------|-------|-------|-------|-------|-------|-------|-------|-------|-------|---------------------|----------------|--------------------|---------------------|-----------------------|
| 2008 | 2.355 | 2.936 | 3.214 | 3.351 | 3.164 | 3.047 | 2.478 | 3.009 | 2.764 | 2.268 | 2.038 | 2.218 | 30.624 | 32.842 | 25.020 | 5.604 | 18,3 |
| 2009 | 999 | 1.131 | 1.416 | 1.793 | 1.756 | 2.023 | 1.529 | 1.429 | 2.156 | 1.158 | 1.347 | 2.839 | 16.737 | 19.576 | 13.670 | 3.067 | 18,3 |
| 2010 | 975 | 1.159 | 2.250 | 2.295 | 2.460 | 2.615 | 2.666 | 3.197 | 3.226 | 3.349 | 3.526 | 6.865 | 27.718 | 34.583 | 20.417 | 7.301 | 26,3 |
| 2011 | 2.867 | 3.923 | 5.642 | 5.087 | 5.216 | 4.419 | 2.614 | 3.239 | 4.184 | 3.806 | 3.493 | 6.558 | 44.490 | 51.048 | 30.549 | 13.941 | 31,3 |
| 2012 | 2.007 | 2.814 | 4.358 | 3.610 | 4.332 | 4.041 | 3.140 | 2.834 | 3.872 | 2.995 | 3.493 | 6.042 | 37.496 | 43.538 | 27.200 | 10.296 | 27,5 |
| 2013 | 2.040 | 2.826 | 4.169 | 3.690 | 4.367 | 3.947 | 3.556 | 2.619 | 3.425 | 2.676 | 4.169 | 6.330 | 37.484 | 43.814 | 28.645 | 8.839 | 23,6 |
| 2014 | 2.081 | 2.638 | 3.731 | 3.808 | 4.326 | 4.132 | 2.863 | 3.104 | 4.233 | 3.169 | 3.747 | 7.854 | 37.832 | 45.686 | 28.294 | 9.538 | 25,2 |
| 2015 | 2.641 | 3.890 | 6.463 | 4.580 | 4.262 | 4.913 | 3.522 | 2.667 | 3.156 | 2.831 | 3.830 | 8.291 | 42.755 | 51.046 | 31.335 | 11.420 | 26,7 |
| 2016 | 1.656 | 2.015 | 2.984 | 2.861 | 3.186 | 3.126 | 1.199 | 2.098 | 1.820 | 2.666 | 3.153 | 3.794 | 26.764 | 30.558 | 19.664 | 7.100 | 26,5 |
| 2017 | 1.317 | 1.620 | 2.376 | 2.243 | 2.644 | 2.162 | 2.430 | 2.282 | 2.694 | 2.687 | 2.913 | 5.267 | 25.368 | 30.635 | 18.129 | 7.239 | 28,5 |
| 2018 | 1.460 | 1.759 | 3.255 | 2.760 | 2.241 | 1.751 | 1.460 | 791 | 890 | 750 | 1.291 | | 18.408 | 18.408 | 12.250 | 6.158 | 33,5 |



| | 2008 | 2009 | 2010 | 2011 | 2012 | 2013 | 2014 | 2015 | 2016 | 2017 | 2018 |
|----------------------------|-----------|---------|-----------|-----------|-----------|-----------|-----------|-----------|-----------|-----------|-----------|
| İhracat/Export | 883.378 | 568.425 | 692.715 | 731.990 | 678.687 | 776.884 | 818.801 | 913.993 | 1.035.057 | 1.236.515 | 1.233.074 |
| Üretim/Production | 1.132.599 | 789.077 | 1.010.310 | 1.126.428 | 1.026.685 | 1.080.004 | 1.094.928 | 1.280.871 | 1.377.078 | 1.592.781 | 1.463.403 |
| İhracat/Exports (%) | 78 | 72 | 68,6 | 65 | 66,1 | 71,9 | 74,8 | 71,4 | 75,2 | 77,6 | 84,3 |

Taşıt Araçları İhracatı (2016 - 2018)
Motor Vehicle Exports (2016 - 2018)

| SEKTÖR / SECTOR | 2016 | 2017 | 1/11-2017 | 1/11-2018 | 2018/2017 % |
|---|------------------|------------------|------------------|------------------|-------------|
| OTOMOBİL / Pass.Car | 745.709 | 921.354 | 852.318 | 810.054 | -5,0 |
| OTOMOBİL TOPLAM / Pass. Car Total | 745.709 | 921.354 | 852.318 | 810.054 | -5,0 |
| KAMYON / Truck | 5.521 | 7.800 | 6.937 | 13.369 | 92,7 |
| KAMYONET / Pick Up | 347.949 | 350.108 | 316.155 | 345.256 | 9,2 |
| OTOBÜS / Bus | 6.498 | 7.028 | 6.409 | 6.885 | 7,4 |
| MİNİBÜS / Minibus | 34.790 | 45.794 | 41.871 | 42.868 | 2,4 |
| MİDİBÜS / Midibus | 915 | 710 | 554 | 742 | 33,9 |
| TİCARİ ARAÇLAR TOPLAM / Commercial Vehicle Total | 395.673 | 411.440 | 371.926 | 409.120 | 10,0 |
| TAŞIT ARAÇLARI TOPLAM / Motor Vehicles Total | 1.141.382 | 1.332.794 | 1.224.244 | 1.219.174 | -0,4 |
| TRAKTÖR / F.Tractor | 13.651 | 13.123 | 12.271 | 13.900 | 13,3 |
| TRAKTÖR TOPLAM / F.Tractor Total | 13.651 | 13.123 | 12.271 | 13.900 | 13,3 |
| GENEL TOPLAM / GRAND TOTAL | 1.155.033 | 1.345.917 | 1.236.515 | 1.233.074 | -0,3 |

Üretici Bazında İhracat (adet)
Exports by Manufacturer (unit)

| Üreticiler / Manufacturers | 2016 | 2017 | 1-11 / 2017 | 1-11 / 2018 |
|-----------------------------------|------------------|------------------|------------------|------------------|
| A.I.O.S. | 673 | 700 | 542 | 817 |
| FORD OTOSAN | 256.706 | 296.840 | 268.868 | 299.794 |
| HATTAT TRAKTÖR | 1.026 | 1.100 | 1.065 | 590 |
| HONDA TÜRKİYE | 2.914 | 9.391 | 8.879 | 13.128 |
| HYUNDAI ASSAN | 207.234 | 204.382 | 189.482 | 174.373 |
| KARSAN | 3.629 | 2.969 | 2.630 | 3.166 |
| M. BENZ TÜRK | 8.307 | 9.865 | 9.115 | 15.149 |
| MAN TÜRKİYE | 1.717 | 2.007 | 1.828 | 2.211 |
| OTOKAR | 833 | 691 | 629 | 696 |
| OYAK RENAULT | 270.088 | 287.915 | 265.080 | 260.514 |
| TEMSA | 653 | 870 | 835 | 508 |
| TOFAŞ | 279.444 | 270.698 | 251.450 | 232.759 |
| TOYOTA | 109.184 | 246.466 | 224.906 | 216.059 |
| TÜRK TRAKTÖR | 12.625 | 12.023 | 11.206 | 13.310 |
| GENEL TOPLAM / Grand Total | 1.155.033 | 1.345.917 | 1.236.515 | 1.233.074 |

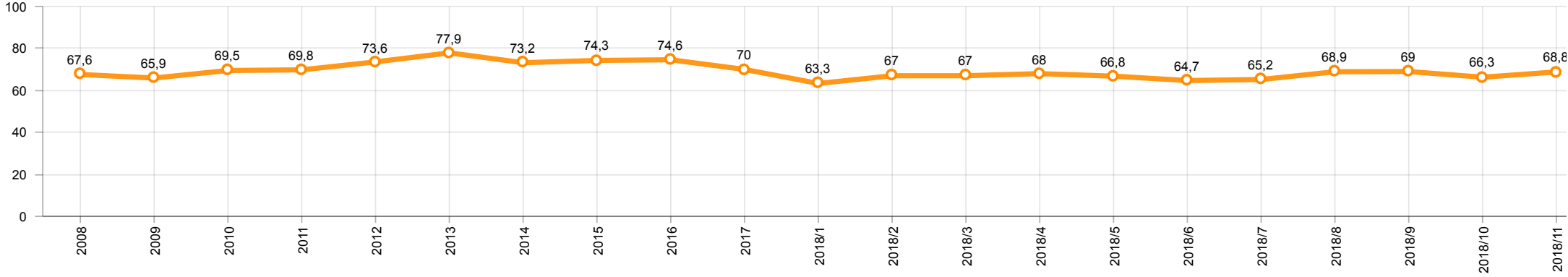
Otomotiv Ana ve Yan Sanayii İhracatı (ABD \$)
CBU and CKD Exports - \$

| Sektör / Sector | 2016 | 2017 | OCAK - KASIM / January - November 2017 | OCAK - KASIM / January - November 2018 | 2018 / 2017 % |
|---|-----------------------|-----------------------|--|--|---------------|
| Toplam Yan Sanayi / Total Component Industry | 8.946.472.202 | 9.838.541.338 | 8.991.808.305 | 10.115.180.726 | 12,5 |
| İç ve Dış Lastik / Tyres | 978.124.241 | 1.131.881.119 | 1.038.071.192 | 1.258.321.031 | 21,2 |
| Emniyet Camı / Safety Glasses | 119.553.098 | 136.486.808 | 124.785.293 | 140.591.709 | 12,7 |
| Motor / Engine | 370.418.066 | 486.426.738 | 433.380.659 | 547.383.750 | 26,3 |
| Akümülatör / Batteries | 224.588.995 | 296.139.813 | 257.924.425 | 344.585.128 | 33,6 |
| Diğer Aksam ve Parça / Spare Parts&Components | 7.253.787.802 | 7.787.606.860 | 7.137.646.736 | 7.824.299.108 | 9,6 |
| Toplam Ana Sanayi / Total Vehicle Industry | 15.302.656.887 | 19.147.991.647 | 17.566.541.397 | 19.609.905.982 | 11,6 |
| Otobüs / Bus | 1.190.475.986 | 1.311.098.736 | 1.179.282.185 | 1.341.642.426 | 13,8 |
| Midibüs-Minibüs / Midibus-Minibus | 238.911.957 | 217.704.499 | 196.196.796 | 191.885.446 | -2,2 |
| Otomobil / P.Cars | 8.336.928.418 | 11.790.776.093 | 10.803.136.878 | 11.426.614.708 | 5,8 |
| Kamyon-Kamyonet / Truck-Pick Up&Van | 4.617.147.751 | 4.849.465.868 | 4.392.623.972 | 4.962.000.468 | 13,0 |
| Römork ve Yarı Römork / Trailer-Semi Trailer | 265.338.366 | 230.168.223 | 303.015.146 | 456.436.327 | 50,6 |
| Çekici / Tractor | 316.355.575 | 427.967.083 | 396.240.250 | 846.851.651 | 113,7 |
| Tarım Traktörü / Farm Tractor | 337.498.834 | 320.811.145 | 296.046.170 | 384.474.956 | 29,9 |
| Toplam / Total | 24.249.129.089 | 28.986.532.985 | 26.558.349.702 | 29.725.086.708 | 11,9 |

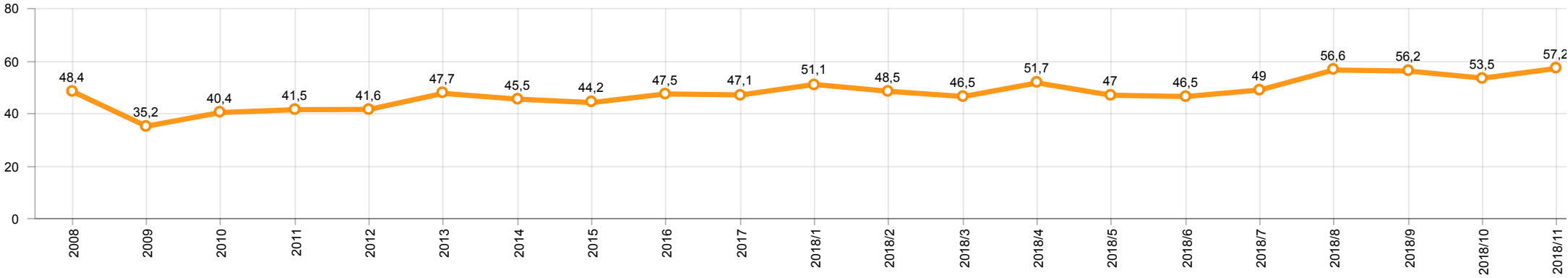
Kaynak: Uludağ İhracatçı Birlikleri . ÜİB tarafından OSD için özel olarak analiz edilen Otomotiv İhracatı kapsamında; ÜİB Türkiye Geneli Otomotiv Endüstrisi sınıflandırmasına kıyasla “Römork ve Yarı Römork”, “Tarım Traktörü” verileri dahil edilmekte; “Kullanılmış Araçlar”, “İki Tekerlekli Taşıtlar”, “Demiryolu Taşıtları” hariç tutulmaktadır.

Source: Uludağ Exporters Association – Special Analyze for OSD.Compared to Turkish General Automotive Industry classification, this special analyze includes; farms tractors, trailers and semi-trailers, does not include; used vehicles, two-wheeled vehicles and railway vehicles

Otomobil Pazarında İthalatın Payı (%)
Import Share in P.Car Market (%)



Hafif Ticari Araçlar Pazarında İthalatın Payı (%)
Import Share in LCV Market (%)



| Araç Tipleri / Vehicle Types | 1 | 2 | 3 | 4 | 5 | 6 | 7 | 8 | 9 | 10 | 11 | 12 | Toplam / Total |
|--|---------------|----------------|----------------|----------------|----------------|----------------|----------------|---------------|----------------|----------------|----------------|----|------------------|
| OTOMOBİL - Pass.Car | 73.408 | 75.779 | 86.252 | 79.786 | 77.297 | 68.030 | 82.198 | 30.528 | 71.505 | 87.359 | 77.912 | | 810.054 |
| KAMYON - H. Truck | 634 | 999 | 1.203 | 1.081 | 967 | 1.258 | 1.431 | 961 | 1.661 | 1.660 | 1.514 | | 13.369 |
| KAMYONET - Pick Up | 18.119 | 39.567 | 36.795 | 31.090 | 34.733 | 35.060 | 34.279 | 12.507 | 36.751 | 32.159 | 34.196 | | 345.256 |
| OTOBÜS - Bus | 490 | 486 | 715 | 594 | 728 | 612 | 623 | 579 | 528 | 741 | 789 | | 6.885 |
| MİNİBÜS - Minibus | 1.649 | 4.521 | 3.929 | 4.336 | 2.777 | 4.653 | 4.752 | 1.227 | 4.606 | 5.055 | 5.363 | | 42.868 |
| MİDİBÜS - Midibus | 13 | 50 | 89 | 58 | 49 | 72 | 106 | 99 | 41 | 88 | 77 | | 742 |
| TİCARİ ARAÇLAR TOPLAMI - CV Total | 20.905 | 45.623 | 42.731 | 37.159 | 39.254 | 41.655 | 41.191 | 15.373 | 43.587 | 39.703 | 41.939 | | 409.120 |
| TAŞIT ARAÇLARI TOPLAMI - MV Total | 94.313 | 121.402 | 128.983 | 116.945 | 116.551 | 109.685 | 123.389 | 45.901 | 115.092 | 127.062 | 119.851 | | 1.219.174 |
| TRAKTÖR - F.Tractor | 802 | 941 | 1.155 | 1.108 | 1.410 | 1.170 | 1.416 | 1.218 | 1.604 | 1.498 | 1.578 | | 13.900 |
| GENEL TOPLAM - Grand Total | 95.115 | 122.343 | 130.138 | 118.053 | 117.961 | 110.855 | 124.805 | 47.119 | 116.696 | 128.560 | 121.429 | | 1.233.074 |

Otomobil / P.Car

| Firmalar / Firms | 1 | 2 | 3 | 4 | 5 | 6 | 7 | 8 | 9 | 10 | 11 | 12 | Toplam / Total |
|-----------------------|---------------|---------------|---------------|---------------|---------------|---------------|---------------|---------------|---------------|---------------|---------------|----|----------------|
| FORD OTOSAN | 2.920 | 2.041 | 1.787 | 40 | 1.154 | 1.629 | 2.026 | 527 | 2.396 | 1.887 | 1.748 | - | 18.155 |
| HONDA TÜRKİYE | 1.251 | 2.300 | 814 | 1.430 | 1.523 | 1.362 | 1.347 | 359 | 919 | 1.083 | 740 | - | 13.128 |
| HYUNDAI ASSAN | 10.899 | 17.471 | 18.914 | 17.307 | 17.265 | 16.490 | 19.191 | 3.300 | 18.824 | 19.774 | 14.938 | - | 174.373 |
| OYAK RENAULT | 27.028 | 20.491 | 24.760 | 25.707 | 28.043 | 21.090 | 27.056 | 9.492 | 16.055 | 31.147 | 29.645 | - | 260.514 |
| TOFAŞ | 9.736 | 15.502 | 16.864 | 13.195 | 12.558 | 11.512 | 9.883 | 4.600 | 12.784 | 10.730 | 10.461 | - | 127.825 |
| TOYOTA | 21.574 | 17.974 | 23.113 | 22.107 | 16.754 | 15.947 | 22.695 | 12.250 | 20.527 | 22.738 | 20.380 | - | 216.059 |
| TOPLAM - Total | 73.408 | 75.779 | 86.252 | 79.786 | 77.297 | 68.030 | 82.198 | 30.528 | 71.505 | 87.359 | 77.912 | - | 810.054 |

Kamyonet / Pick-up

| Firmalar / Firms | 1 | 2 | 3 | 4 | 5 | 6 | 7 | 8 | 9 | 10 | 11 | 12 | Toplam / Total |
|-----------------------|---------------|---------------|---------------|---------------|---------------|---------------|---------------|---------------|---------------|---------------|---------------|----|----------------|
| FORD OTOSAN | 12.083 | 28.583 | 25.157 | 20.652 | 23.087 | 23.358 | 24.767 | 6.746 | 25.815 | 23.195 | 24.002 | - | 237.445 |
| KARSAN | 194 | 271 | 318 | 270 | 179 | 282 | 414 | 124 | 210 | 329 | 248 | - | 2.839 |
| OTOKAR | - | 6 | - | - | - | - | 8 | - | - | 15 | 9 | - | 38 |
| TOFAŞ | 5.842 | 10.707 | 11.320 | 10.168 | 11.467 | 11.420 | 9.090 | 5.637 | 10.726 | 8.620 | 9.937 | - | 104.934 |
| TOPLAM - Total | 18.119 | 39.567 | 36.795 | 31.090 | 34.733 | 35.060 | 34.279 | 12.507 | 36.751 | 32.159 | 34.196 | - | 345.256 |

Minibüs / Minibus

| Firmalar / Firms | 1 | 2 | 3 | 4 | 5 | 6 | 7 | 8 | 9 | 10 | 11 | 12 | Toplam / Total |
|-----------------------|--------------|--------------|--------------|--------------|--------------|--------------|--------------|--------------|--------------|--------------|--------------|----|----------------|
| FORD OTOSAN | 1.597 | 4.521 | 3.904 | 4.335 | 2.776 | 4.648 | 4.751 | 1.227 | 4.606 | 5.053 | 5.355 | - | 42.773 |
| KARSAN | 52 | - | 25 | 1 | 1 | 5 | 1 | - | - | 2 | 8 | - | 95 |
| TOPLAM - Total | 1.649 | 4.521 | 3.929 | 4.336 | 2.777 | 4.653 | 4.752 | 1.227 | 4.606 | 5.055 | 5.363 | - | 42.868 |

Kamyon / Truck

| Firmalar / Firms | 1 | 2 | 3 | 4 | 5 | 6 | 7 | 8 | 9 | 10 | 11 | 12 | Toplam / Total |
|-----------------------|------------|------------|--------------|--------------|------------|--------------|--------------|------------|--------------|--------------|--------------|----------|----------------|
| A.I.O.S. | - | - | - | - | - | 6 | - | - | - | - | - | - | 6 |
| FORD OTOSAN | 68 | 99 | 138 | 87 | 106 | 159 | 134 | 83 | 133 | 220 | 194 | - | 1.421 |
| KARSAN | - | - | - | - | - | - | - | - | - | - | - | - | - |
| M. BENZ TÜRK | 566 | 900 | 1.065 | 994 | 861 | 1.093 | 1.297 | 878 | 1.528 | 1.440 | 1.320 | - | 11.942 |
| OTOKAR | - | - | - | - | - | - | - | - | - | - | - | - | - |
| TOPLAM - Total | 634 | 999 | 1.203 | 1.081 | 967 | 1.258 | 1.431 | 961 | 1.661 | 1.660 | 1.514 | - | 13.369 |

Midibüs / Midibus

| Firmalar / Firms | 1 | 2 | 3 | 4 | 5 | 6 | 7 | 8 | 9 | 10 | 11 | 12 | Toplam / Total |
|-----------------------|-----------|-----------|-----------|-----------|-----------|-----------|------------|-----------|-----------|-----------|-----------|----------|----------------|
| A.I.O.S. | 6 | 32 | 54 | 37 | 20 | 53 | 42 | 65 | 26 | 51 | 49 | - | 435 |
| KARSAN | 1 | 3 | 1 | 1 | - | 3 | 3 | 1 | - | 1 | - | - | 14 |
| OTOKAR | 4 | 15 | 27 | 15 | 15 | 12 | 56 | 31 | 14 | 24 | 27 | - | 240 |
| TEMSA | 2 | - | 7 | 5 | 14 | 4 | 5 | 2 | 1 | 12 | 1 | - | 53 |
| TOPLAM - Total | 13 | 50 | 89 | 58 | 49 | 72 | 106 | 99 | 41 | 88 | 77 | - | 742 |

Otobüs / Bus

| Firmalar / Firms | 1 | 2 | 3 | 4 | 5 | 6 | 7 | 8 | 9 | 10 | 11 | 12 | Toplam / Total |
|-----------------------|------------|------------|------------|------------|------------|------------|------------|------------|------------|------------|------------|----------|----------------|
| A.I.O.S. | 3 | 2 | 39 | 24 | 47 | 59 | 27 | 16 | 46 | 55 | 58 | - | 376 |
| KARSAN | 1 | - | 23 | - | 31 | 52 | - | 56 | 29 | 19 | 7 | - | 218 |
| M. BENZ TÜRK | 220 | 238 | 373 | 311 | 359 | 259 | 378 | 176 | 231 | 311 | 351 | - | 3.207 |
| MAN TÜRKİYE | 243 | 212 | 233 | 228 | 228 | 178 | 151 | 124 | 164 | 228 | 222 | - | 2.211 |
| OTOKAR | 19 | 19 | 27 | 8 | 22 | 26 | 24 | 100 | 36 | 31 | 106 | - | 418 |
| TEMSA | 4 | 15 | 20 | 23 | 41 | 38 | 43 | 107 | 22 | 97 | 45 | - | 455 |
| TOPLAM - Total | 490 | 486 | 715 | 594 | 728 | 612 | 623 | 579 | 528 | 741 | 789 | - | 6.885 |

Traktör / F.Tractor

| Firmalar / Firms | 1 | 2 | 3 | 4 | 5 | 6 | 7 | 8 | 9 | 10 | 11 | 12 | Toplam / Total |
|-----------------------|------------|------------|--------------|--------------|--------------|--------------|--------------|--------------|--------------|--------------|--------------|----------|----------------|
| HATTAT TRAKTÖR | 1 | 24 | 45 | 49 | 60 | 109 | 103 | 7 | 104 | 32 | 56 | - | 590 |
| TÜRK TRAKTÖR | 801 | 917 | 1.110 | 1.059 | 1.350 | 1.061 | 1.313 | 1.211 | 1.500 | 1.466 | 1.522 | - | 13.310 |
| TOPLAM - Total | 802 | 941 | 1.155 | 1.108 | 1.410 | 1.170 | 1.416 | 1.218 | 1.604 | 1.498 | 1.578 | - | 13.900 |

| Firmalar / Firms | 2017 Toplam / Total | 1 | 2 | 3 | 4 | 5 | 6 | 7 | 8 | 9 | 10 | 11 | 12 | Toplam / Total |
|-----------------------------------|---------------------|---------------|---------------|---------------|---------------|---------------|---------------|---------------|---------------|---------------|---------------|---------------|----------|----------------|
| Alfa Romeo | 320 | 5 | 14 | 13 | 32 | 25 | 10 | 14 | 15 | 13 | 24 | 15 | - | 180 |
| Aston Martin | 25 | 1 | 1 | 1 | 1 | 1 | 1 | 1 | 1 | 2 | 2 | 3 | - | 15 |
| Audi | 21.585 | 1.013 | 1.033 | 1.552 | 1.625 | 1.630 | 668 | 840 | 737 | 350 | 199 | 1.469 | - | 11.116 |
| Bentley | 16 | - | 3 | - | - | 1 | 1 | - | 1 | - | 2 | - | - | 8 |
| BMW | 19.564 | 626 | 1.003 | 1.586 | 1.270 | 1.910 | 1.386 | 760 | 1.005 | 158 | 343 | 1.086 | - | 11.133 |
| Citroen | 14.709 | 407 | 1.128 | 1.086 | 615 | 980 | 499 | 922 | 495 | 134 | 230 | 623 | - | 7.119 |
| Dacia | 41.914 | 937 | 1.298 | 3.600 | 3.199 | 3.193 | 2.254 | 2.343 | 1.220 | 1.141 | 1.042 | 2.993 | - | 23.220 |
| DS | 119 | - | - | 81 | 20 | 9 | 9 | 10 | 64 | 9 | 4 | 8 | - | 214 |
| Ferrari | 16 | 1 | 1 | 2 | 3 | 1 | 1 | 2 | 2 | 3 | 1 | 1 | - | 18 |
| Fiat | 2.157 | 56 | 102 | 142 | 130 | 178 | 139 | 112 | 79 | 57 | 42 | 114 | - | 1.151 |
| Ford | 33.671 | 920 | 1.440 | 2.638 | 2.506 | 2.803 | 2.016 | 1.914 | 1.438 | 705 | 724 | 1.959 | - | 19.063 |
| Honda | 7.250 | 207 | 189 | 469 | 646 | 588 | 451 | 402 | 322 | 502 | 361 | 334 | - | 4.471 |
| Hyundai | 26.841 | 1.282 | 1.734 | 2.376 | 2.555 | 2.463 | 1.898 | 1.382 | 656 | 1.036 | 867 | 1.423 | - | 17.672 |
| Infinity | 122 | 3 | 5 | 2 | 2 | 2 | - | - | - | - | 2 | - | - | 18 |
| Jaguar | 339 | 12 | 20 | 24 | 18 | 12 | 8 | 6 | 8 | 17 | 13 | 37 | - | 175 |
| Jeep | 2.357 | 101 | 159 | 255 | 295 | 185 | 175 | 140 | 91 | 90 | 89 | 435 | - | 2.015 |
| Kia | 10.937 | 431 | 514 | 872 | 984 | 742 | 770 | 795 | 418 | 241 | 326 | 958 | - | 7.051 |
| Lamborghini | 7 | - | - | - | 1 | 1 | - | - | - | - | - | - | - | 2 |
| Land Rover | 1.879 | 84 | 145 | 162 | 129 | 112 | 93 | 67 | 22 | 45 | 62 | 100 | - | 1.021 |
| Lexus | 101 | 2 | 2 | 8 | 10 | 7 | 2 | 5 | 1 | 2 | 8 | 3 | - | 50 |
| Maserati | 76 | 4 | 2 | 6 | 6 | 4 | 5 | 3 | 2 | 2 | 6 | 4 | - | 44 |
| Mazda | 1.412 | 62 | 76 | 135 | 134 | 129 | 40 | 73 | 52 | 110 | 20 | 21 | - | 852 |
| Mercedes-Benz | 25.588 | 1.190 | 1.151 | 2.031 | 1.496 | 2.153 | 1.326 | 1.251 | 951 | 781 | 606 | 674 | - | 13.610 |
| Mini | 1.480 | 55 | 82 | 116 | 121 | 146 | 66 | 103 | 70 | 45 | 50 | 228 | - | 1.082 |
| Mitsubishi | 354 | 12 | 9 | 21 | 58 | 57 | 39 | 14 | 14 | 29 | 28 | 90 | - | 371 |
| Nissan | 32.043 | 767 | 1.470 | 2.908 | 2.021 | 2.508 | 1.684 | 1.025 | 1.320 | 1.184 | 1.594 | 4.557 | - | 21.038 |
| Opel | 44.707 | 1.327 | 1.568 | 2.989 | 3.476 | 1.416 | 1.521 | 2.102 | 1.688 | 857 | 541 | 1.501 | - | 18.986 |
| Peugeot | 29.981 | 809 | 1.625 | 3.038 | 2.875 | 3.819 | 1.851 | 2.808 | 1.340 | 456 | 520 | 2.293 | - | 21.434 |
| Porsche | 670 | 43 | 50 | 61 | 70 | 54 | 36 | 49 | 75 | 32 | 28 | 30 | - | 528 |
| Renault | 37.021 | 1.013 | 1.552 | 1.821 | 2.617 | 2.694 | 1.770 | 1.711 | 1.042 | 782 | 396 | 2.304 | - | 17.702 |
| Seat | 16.064 | 663 | 869 | 1.226 | 1.341 | 1.154 | 753 | 1.387 | 862 | 285 | 236 | 634 | - | 9.410 |
| Skoda | 24.679 | 1.564 | 2.161 | 2.911 | 2.018 | 1.820 | 1.726 | 1.857 | 1.098 | 618 | 772 | 2.165 | - | 18.710 |
| Smart | 105 | - | - | 4 | 4 | 3 | 5 | 6 | - | - | 4 | 4 | - | 30 |
| Ssangyong | 362 | 26 | 25 | 38 | 18 | 19 | 6 | 9 | 7 | 4 | 6 | 23 | - | 181 |
| Subaru | 1.726 | 86 | 55 | 224 | 165 | 144 | 96 | 106 | 77 | 89 | 67 | 113 | - | 1.222 |
| Suzuki | 4.316 | 67 | 122 | 323 | 253 | 383 | 127 | 267 | 229 | 70 | 91 | 425 | - | 2.357 |
| Toyota | 7.297 | 309 | 376 | 294 | 318 | 370 | 218 | 193 | 243 | 101 | 114 | 632 | - | 3.168 |
| Volkswagen | 89.688 | 2.497 | 3.763 | 6.561 | 5.801 | 5.913 | 4.428 | 4.217 | 2.567 | 1.763 | 1.406 | 4.088 | - | 43.004 |
| Volvo | 4.470 | 250 | 302 | 503 | 631 | 590 | 577 | 520 | 375 | 427 | 310 | 457 | - | 4.942 |
| GENEL TOPLAM - Grand Total | 505.968 | 16.832 | 24.049 | 40.079 | 37.464 | 38.219 | 26.657 | 27.416 | 18.587 | 12.140 | 11.136 | 31.804 | - | 284.383 |

2018 Yılı İthal Hafif Ticari Araç Satışları
2018 Light Commercial Vehicles Import Sales

| Firmalar / Firms | 2017 Toplam / Total | 1 | 2 | 3 | 4 | 5 | 6 | 7 | 8 | 9 | 10 | 11 | 12 | Toplam / Total |
|-----------------------------------|---------------------|--------------|--------------|--------------|--------------|--------------|--------------|--------------|--------------|--------------|--------------|--------------|----|----------------|
| Citroen | 8.023 | 94 | 291 | 706 | 406 | 634 | 520 | 470 | 198 | 197 | 200 | 491 | - | 4.207 |
| Dacia | 6.456 | 254 | 302 | 335 | 337 | 328 | 293 | 259 | 467 | 319 | 245 | 331 | - | 3.470 |
| Fiat | 6.582 | 163 | 252 | 401 | 249 | 362 | 223 | 248 | 236 | 199 | 150 | 225 | - | 2.708 |
| Ford | 4.188 | 174 | 142 | 251 | 247 | 216 | 214 | 286 | 152 | 139 | 184 | 351 | - | 2.356 |
| Hyundai | 2.984 | 119 | 85 | 28 | 215 | 199 | 131 | 125 | 51 | 39 | 44 | 296 | - | 1.332 |
| Isuzu | 302 | 24 | 18 | 19 | 19 | 33 | 63 | 55 | 19 | 17 | 5 | 100 | - | 372 |
| Iveco | 2.566 | 122 | 148 | 161 | 146 | 133 | 107 | 137 | 82 | 110 | 72 | 167 | - | 1.385 |
| Kia | 3.591 | 111 | 143 | 207 | 322 | 221 | 149 | 127 | 82 | 70 | 54 | 226 | - | 1.712 |
| Mercedes-Benz | 9.043 | 480 | 646 | 1.121 | 1.206 | 1.204 | 328 | 404 | 476 | 382 | 317 | 436 | - | 7.000 |
| Mitsubishi | 3.527 | 158 | 347 | 403 | 669 | 184 | 108 | 303 | 369 | 181 | 94 | 195 | - | 3.011 |
| Nissan | 2.779 | 95 | 154 | 197 | 165 | 116 | 94 | 79 | 61 | 33 | 58 | 205 | - | 1.257 |
| Peugeot | 10.458 | 178 | 277 | 485 | 517 | 404 | 338 | 621 | 289 | 261 | 227 | 593 | - | 4.190 |
| Renault | 16.822 | 512 | 793 | 1.087 | 1.127 | 969 | 705 | 660 | 468 | 435 | 297 | 943 | - | 7.996 |
| Ssangyong | 255 | 5 | 1 | 6 | 8 | 12 | 21 | 47 | 27 | - | 1 | 10 | - | 138 |
| Toyota | 4.551 | 210 | 267 | 310 | 652 | 352 | 180 | 128 | 174 | 194 | 103 | 244 | - | 2.814 |
| Volkswagen | 27.793 | 1.630 | 1.516 | 1.974 | 1.989 | 1.931 | 1.093 | 1.298 | 1.018 | 476 | 499 | 2.055 | - | 15.479 |
| GENEL TOPLAM - Grand Total | 109.920 | 4.329 | 5.382 | 7.691 | 8.274 | 7.298 | 4.567 | 5.247 | 4.169 | 3.052 | 2.550 | 6.868 | - | 59.427 |