



OTOMOTİV SANAYİİ DERNEĐİ
AUTOMOTIVE MANUFACTURERS ASSOCIATION

OTOMOTİV SEKTÖRÜ AYLIK DEĐERLENDİRME RAPORU EKİM 2022

AUTOMOTIVE INDUSTRY MONTHLY REPORT
October 2022

OSD "OICA" Üyesidir © O I C A OSD is a Member of "OICA"

	10 - 2021	10 - 2022	%	1 - 10 / 2021	1 - 10 / 2022	%	11/2020 - 10/2021	11/2021 - 10/2022	%
Otomobil Üretimi/P.Cars Production	64.183	62.363	-2,8	635.291	633.369	-0,3	818.658	780.913	-4,6
Toplam Üretim/Total Production	107.623	114.835	6,7	1.029.279	1.076.865	4,6	1.322.181	1.323.726	0,1
Otomobil Pazar/P.Cars Market	40.512	47.440	17,1	475.312	446.664	-6,0	620.390	533.205	-14,1
Toplam Pazar/Total Market	60.064	69.093	15,0	642.130	618.723	-3,7	832.873	749.443	-10,0
Otomobil İthalat/P.Cars Import	24.929	29.697	19,1	285.582	275.012	-3,7	367.991	325.326	-11,6
Toplam İthalat/Total Import	31.474	37.918	20,5	358.555	342.006	-4,6	456.392	409.184	-10,3
Otomobil İhracat/P.Cars Export	54.224	50.772	-6,4	455.664	447.374	-1,8	571.578	557.080	-2,5
Toplam İhracat/Total Export	87.027	91.353	5,0	758.683	779.317	2,7	955.003	957.649	0,3
Otomobil İhracat(\$)/P.Cars Export (\$)	919.139.119,51	737.324.867,16	-19,8	7.539.656.200	7.140.714.727	-5,3	9.537.961.154	8.873.131.434	-7,0
Toplam İhracat(\$)/Total Export (\$)*	2.649.193.640,4	2.709.828.273,23	2,3	24.317.258.644	25.365.340.312	4,3	29.886.444.596	30.920.801.286	3,5

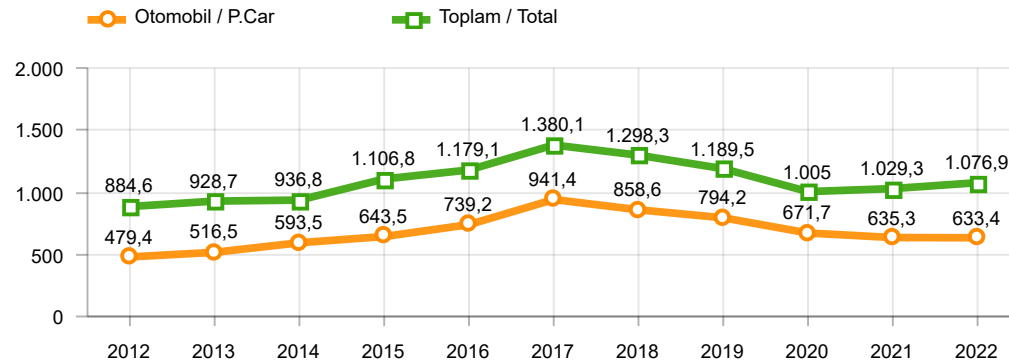
Parametreler/Parameters	10 - 2021	10 - 2022	%	1 - 10 / 2021	1 - 10 / 2022	%	11/2020 - 10/2021	11/2021 - 10/2022	%
ÜFE / PPI	5,2	7,8	-	37,3	96,7	-	36,2	122,9	-
TÜFE / CPI	2,4	3,5	-	15,8	57,8	-	17,1	65,3	-
Sanayi Endeksi / Industry Index	5,4	3,2	-	36,3	71,2	-	38,1	108,0	-
Dolar \$ ** (1 birim)	9,1	18,6	103,1	8,2	16,1	96,8	8,1	15,4	89,7
Euro € ** (1 birim)	10,6	18,2	72,1	9,8	17,0	73,6	9,7	16,4	69,0
Japon Yeni ¥ ** (100 birim)	8,0	12,6	56,2	7,5	12,3	64,9	7,5	12,0	60,7

*Toplam Sanayi / Total Industry Including Components

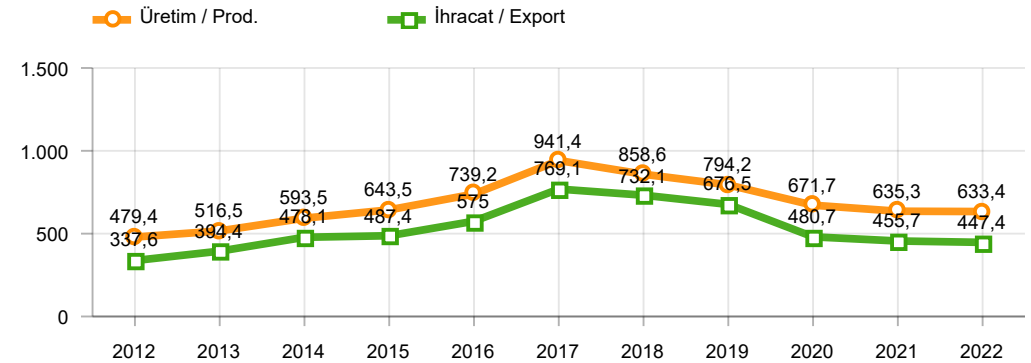
** Ortalama Değerler / Average Values

Araç Tipleri / Types	10 / 2021	10 / 2022	10 % Değişim	1-10 / 2021	1-10 / 2022	1-10 % Değişim
OTOMOBİL / Pass.Car	64.183	62.363	-2,8	635.291	633.369	-0,3
OTOMOBİL Toplam / Pass.Car Total	64.183	62.363	-2,8	635.291	633.369	-0,3
B.KAMYON / H. Truck	3.950	4.255	7,7	25.747	33.092	28,5
K.KAMYON / L. Truck	239	596	149,4	3.136	4.158	32,6
KAMYONET / Pick Up	34.289	43.256	26,2	320.704	357.786	11,6
OTOBÜS / Bus	528	784	48,5	4.436	6.248	40,8
MİNİBÜS / Minibus	4.215	3.302	-21,7	38.198	39.664	3,8
MİDİBÜS / Midibus	219	279	27,4	1.767	2.548	44,2
TİCARİ ARAÇLAR Toplam / Commercial Vehicles Total	43.440	52.472	20,8	393.988	443.496	12,6
TAŞIT ARAÇLARI Toplam / Motor Vehicles Total	107.623	114.835	6,7	1.029.279	1.076.865	4,6
TRAKTÖR / F.Tractor	4.610	4.810	4,3	45.820	39.718	-13,3
TRAKTÖR Toplam / F.Tractor Total	4.610	4.810	4,3	45.820	39.718	-13,3
GENEL TOPLAM / Grand Total	112.233	119.645	6,6	1.075.099	1.116.583	3,9

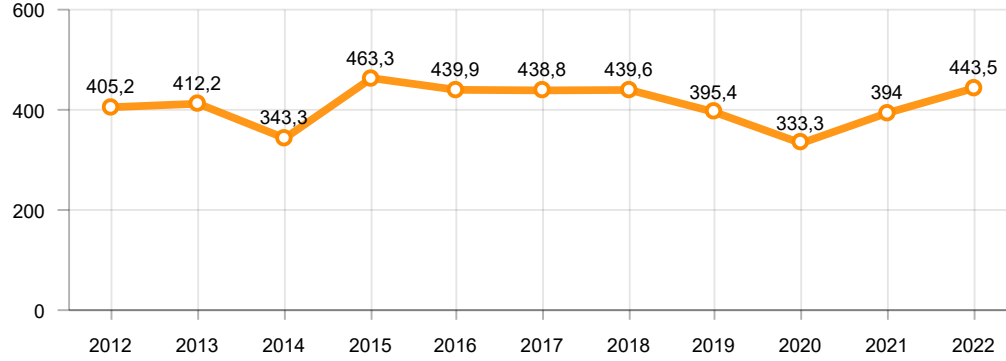
Toplam Üretim ve Otomobil Üretimi (x1000)(OCAK - EKİM)
Total & P.Cars Production (x1000)(January - October)



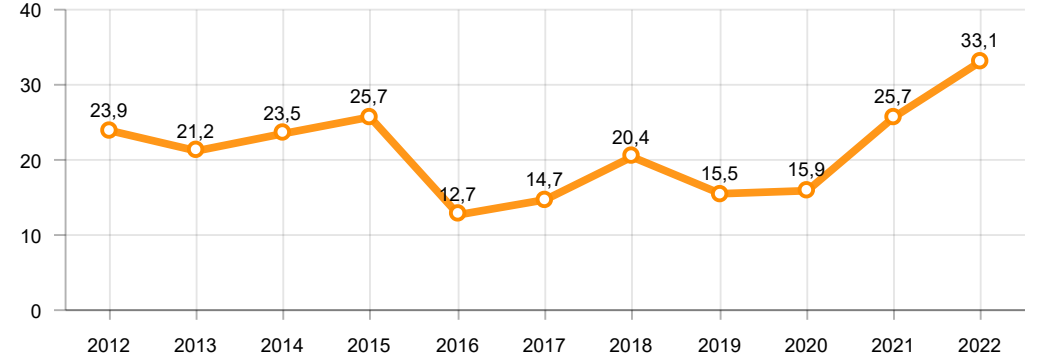
Otomobil Üretimi ve İhracat (x1000)(OCAK - EKİM)
P.Cars Production & Exports (x1000)(January - October)



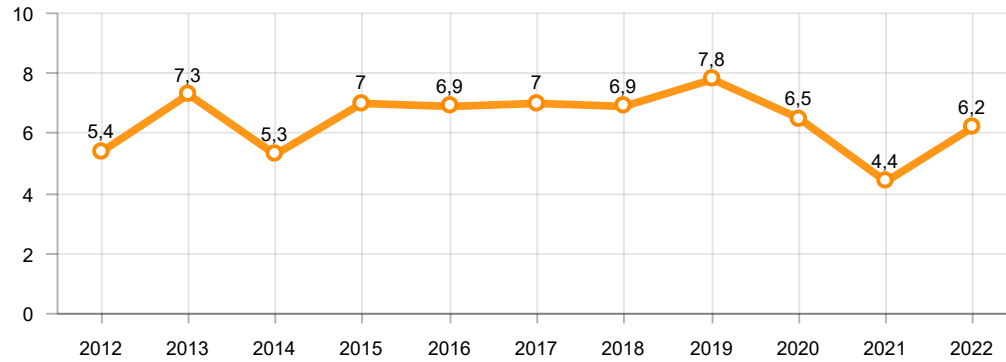
Ticari Araç Üretimi (x1000)(OCAK - EKİM)
Commercial Vehicle Production (x1000)(January - October)



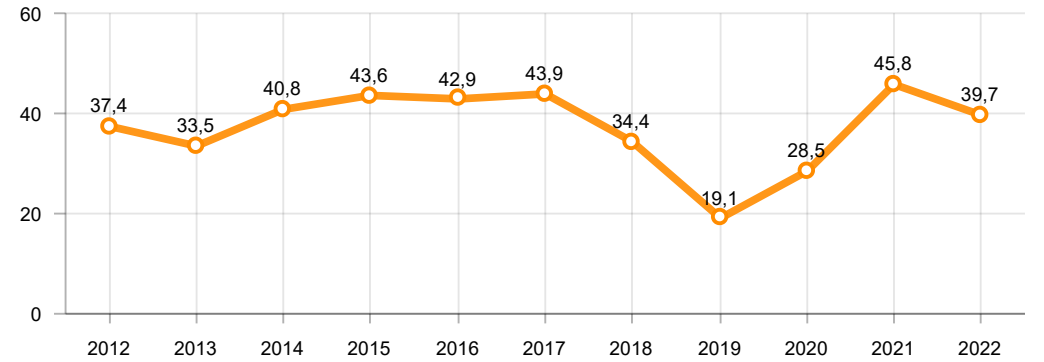
Büyük Kamyon Üretimi (x1000)(OCAK - EKİM)
Heavy Truck Production (x1000)(January - October)

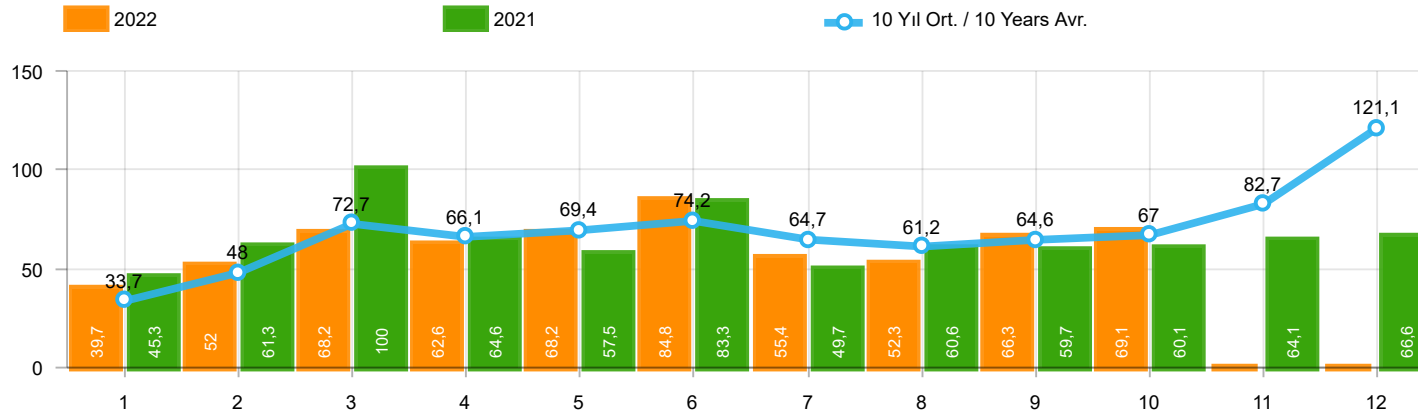


Otobüs Üretimi (x1000)(OCAK - EKİM)
Bus Production (x1000)(January - October)



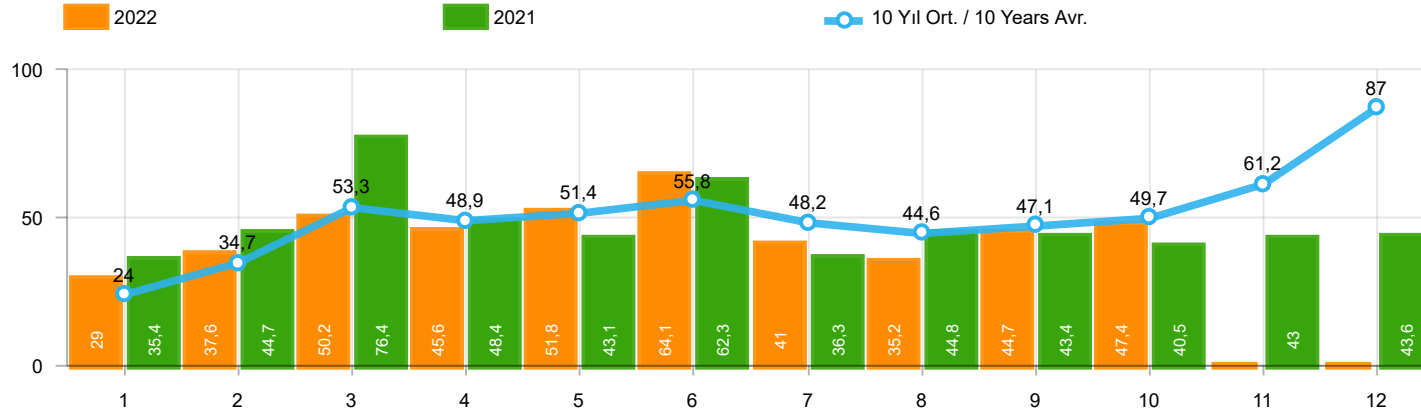
Traktör Üretimi (x1000)(OCAK - EKİM)
F. Tractor Production (x1000)(January - October)





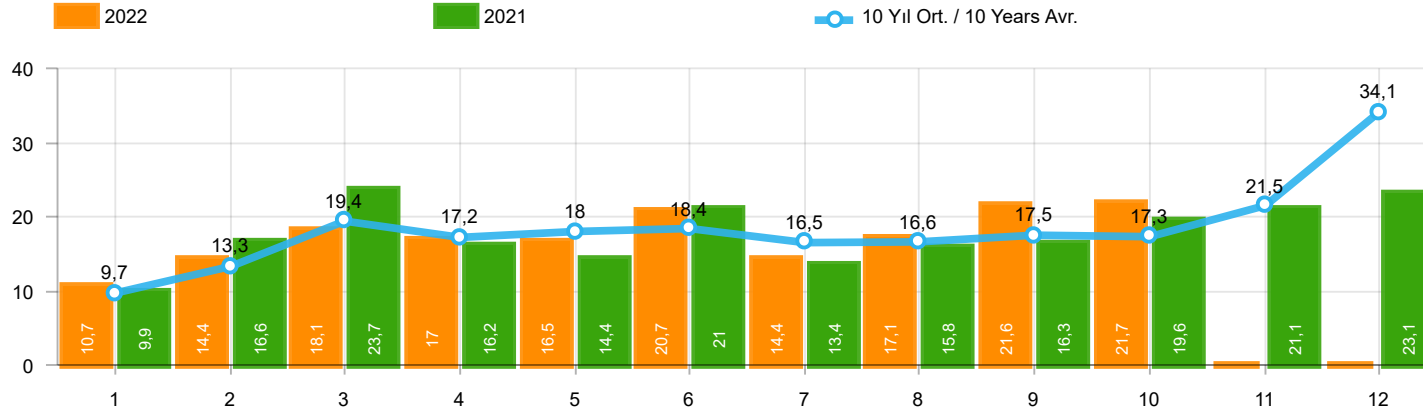
Aylar / Months	10 Yıl Ort / 10 Years Avr.	2022	%
1	33.693	39.741	18,0
2	48.018	52.030	8,4
3	72.722	68.241	-6,2
4	66.064	62.584	-5,3
5	69.419	68.221	-1,7
6	74.178	84.788	14,3
7	64.697	55.424	-14,3
8	61.177	52.297	-14,5
9	64.639	66.304	2,6
10	67.035	69.093	3,1
TOPLAM/TOTAL	621.646	618.723	-0,5

Yıl / Year	1	2	3	4	5	6	7	8	9	10	11	12	1-10 Toplam / Total	Toplam / Total	1-10 Yerli / Local	1-10 İthal / Import	İthal Oran / Import %
2012	31.552	44.138	69.242	66.559	75.195	75.108	65.444	60.982	73.501	62.933	75.203	121.442	624.654	821.299	236.286	388.368	62,2
2013	37.563	51.133	72.943	77.265	85.835	78.043	75.152	67.662	71.388	60.690	83.470	136.048	677.674	897.192	211.066	466.608	68,9
2014	34.751	37.659	51.312	57.113	62.447	64.295	62.770	63.303	70.764	69.742	84.368	154.843	574.156	813.367	197.036	377.120	65,7
2015	37.256	59.221	89.765	96.182	85.804	91.071	87.358	85.244	67.181	67.086	88.431	164.464	766.168	1.019.063	264.108	502.060	65,5
2016	34.369	54.840	85.932	87.748	97.090	94.666	59.732	73.654	69.413	85.666	125.462	145.706	743.110	1.014.278	238.135	504.975	68,0
2017	36.640	48.585	76.178	78.231	88.066	85.820	84.727	74.818	74.046	94.439	103.772	141.507	741.550	986.829	268.817	472.733	63,7
2018	36.525	48.768	79.600	73.886	74.996	52.788	54.194	35.137	23.915	22.321	59.406	80.014	502.130	641.550	191.259	310.871	61,9
2019	14.847	25.569	50.651	31.944	33.947	43.899	18.442	26.832	43.068	50.288	59.575	92.885	339.487	491.947	147.998	191.489	56,4
2020	28.123	48.948	51.554	27.165	33.308	72.789	89.419	63.570	93.406	97.125	82.824	107.919	605.407	796.150	276.253	329.154	54,4
2021	45.308	61.325	100.046	64.551	57.510	83.304	49.732	60.573	59.717	60.064	64.087	66.633	642.130	772.850	283.575	358.555	55,8
2022	39.741	52.030	68.241	62.584	68.221	84.788	55.424	52.297	66.304	69.093			618.723	618.723	276.717	342.006	55,3



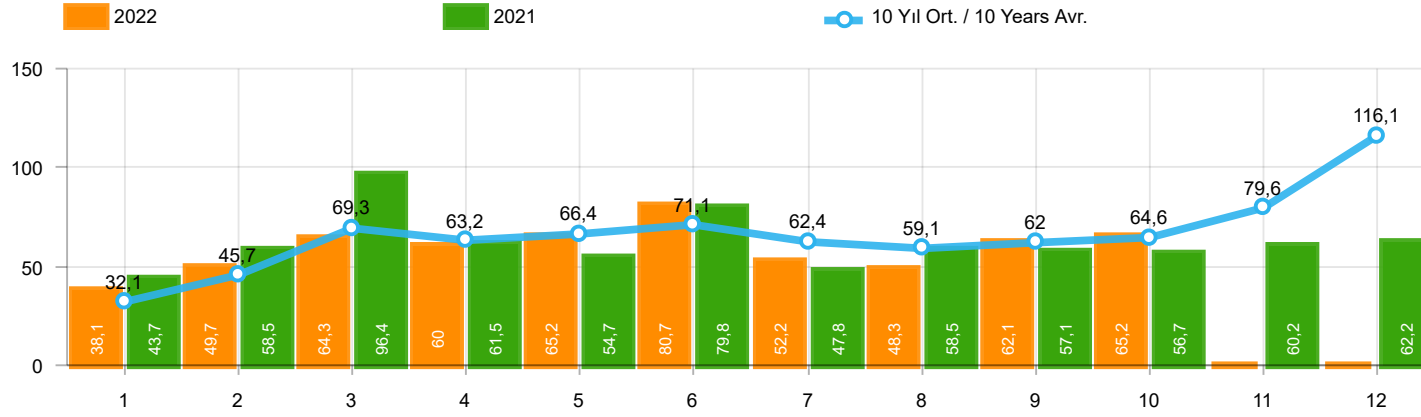
Aylar / Months	10 Yıl Ort / 10 Years Avr.	2022	%
1	23.979	29.020	21,0
2	34.682	37.641	8,5
3	53.280	50.173	-5,8
4	48.896	45.564	-6,8
5	51.430	51.750	0,6
6	55.812	64.134	14,9
7	48.217	41.031	-14,9
8	44.625	35.230	-21,1
9	47.101	44.681	-5,1
10	49.709	47.440	-4,6
TOPLAM / TOTAL	457.730	446.664	-2,4

Yıl / Year	1	2	3	4	5	6	7	8	9	10	11	12	1-10 Toplam / Total	Toplam / Total	1-10 Yerli / Local	1-10 İthal / Import	İthal Oran / Import %
2012	21.077	29.189	47.270	45.645	50.460	50.849	44.531	41.236	49.360	43.440	52.297	80.926	423.057	556.280	115.922	307.135	72,6
2013	25.835	36.814	51.785	56.999	62.383	58.290	55.712	51.611	52.925	46.985	64.117	101.199	499.339	664.655	110.263	389.076	77,9
2014	24.368	27.167	37.812	42.769	46.379	47.278	46.602	45.131	49.262	50.814	59.695	110.054	417.582	587.331	108.721	308.861	74,0
2015	24.498	40.817	61.676	70.211	62.878	67.766	64.218	61.753	47.088	47.954	62.397	114.340	548.859	725.596	138.431	410.428	74,8
2016	23.358	40.588	63.975	65.618	73.832	71.111	45.566	53.977	51.340	63.746	95.783	108.044	553.111	756.938	133.869	419.242	75,8
2017	25.689	34.658	55.616	57.998	65.799	66.164	62.384	54.890	53.423	70.488	75.956	99.694	547.109	722.759	164.605	382.504	69,9
2018	26.611	35.901	59.798	55.108	57.227	41.225	42.024	26.976	17.595	16.809	46.204	60.843	379.274	486.321	126.695	252.579	66,6
2019	10.979	19.205	38.628	24.416	27.126	36.024	15.398	21.544	35.308	39.996	47.803	70.829	268.624	387.256	110.207	158.417	59,0
2020	22.016	37.727	39.887	21.825	25.073	57.067	69.427	44.372	71.296	76.341	64.357	80.721	465.031	610.109	186.990	278.041	59,8
2021	35.358	44.749	76.357	48.375	43.138	62.348	36.311	44.756	43.408	40.512	42.982	43.559	475.312	561.853	189.730	285.582	60,1
2022	29.020	37.641	50.173	45.564	51.750	64.134	41.031	35.230	44.681	47.440			446.664	446.664	171.652	275.012	61,6



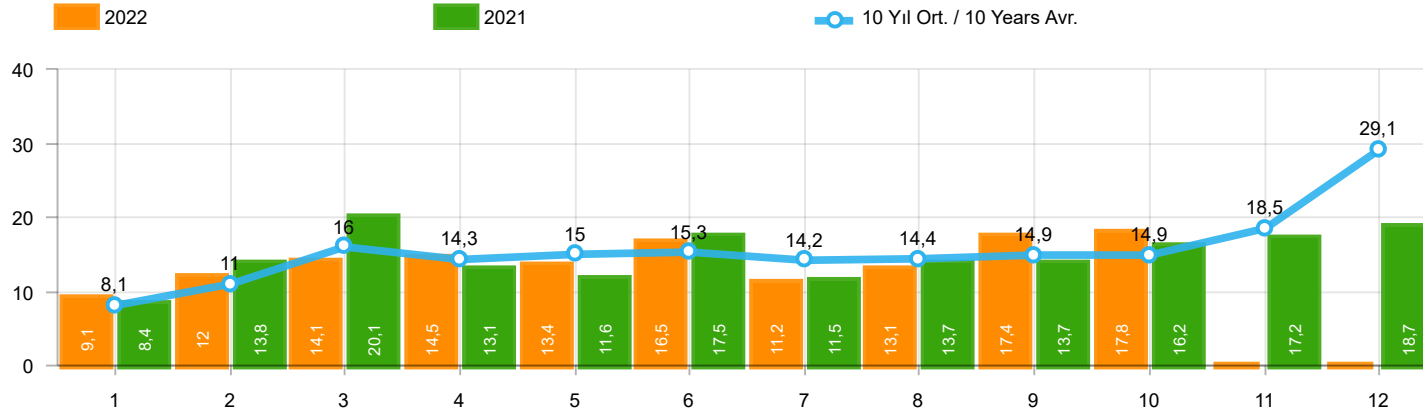
Aylar / Months	10 Yıl Ort. / 10 Years Avr.	2022	%
1	9.715	10.721	10,4
2	13.337	14.389	7,9
3	19.442	18.068	-7,1
4	17.168	17.020	-9
5	17.990	16.471	-8,4
6	18.366	20.654	12,5
7	16.480	14.393	-12,7
8	16.553	17.067	3,1
9	17.539	21.623	23,3
10	17.327	21.653	25,0
TOPLAM / TOTAL	163.917	172.059	5,0

Yıl / Year	1	2	3	4	5	6	7	8	9	10	11	12	1-10 Toplam / Total	Toplam / Total	1-10 Yerli / Local	1-10 İthal / Import	İthal Oran / Import %
2012	10.475	14.949	21.972	20.914	24.735	24.259	20.913	19.746	24.141	19.493	22.906	40.516	201.597	265.019	120.364	81.233	40,3
2013	11.728	14.319	21.158	20.266	23.452	19.753	19.440	16.051	18.463	13.705	19.353	34.849	178.335	232.537	100.803	77.532	43,5
2014	10.383	10.492	13.500	14.344	16.068	17.017	16.168	18.172	21.502	18.928	24.673	44.789	156.574	226.036	88.315	68.259	43,6
2015	12.758	18.404	28.089	25.971	22.926	23.305	23.140	23.491	20.093	19.132	26.034	50.124	217.309	293.467	125.677	91.632	42,2
2016	11.011	14.252	21.957	22.130	23.258	23.555	14.166	19.677	18.073	21.920	29.679	37.662	189.999	257.340	104.266	85.733	45,1
2017	10.951	13.927	20.562	20.233	22.267	19.656	22.343	19.928	20.623	23.951	27.816	41.813	194.441	264.070	104.212	90.229	46,4
2018	9.914	12.867	19.802	18.778	17.769	11.563	12.170	8.161	6.320	5.512	13.202	19.171	122.856	155.229	64.564	58.292	47,4
2019	3.868	6.364	12.023	7.528	6.821	7.875	3.044	5.288	7.760	10.292	11.772	22.056	70.863	104.691	37.791	33.072	46,7
2020	6.107	11.221	11.667	5.340	8.235	15.722	19.992	19.198	22.110	20.784	18.467	27.198	140.376	186.041	89.263	51.113	36,4
2021	9.950	16.576	23.689	16.176	14.372	20.956	13.421	15.817	16.309	19.552	21.105	23.074	166.818	210.997	93.845	72.973	43,7
2022	10.721	14.389	18.068	17.020	16.471	20.654	14.393	17.067	21.623	21.653			172.059	172.059	105.065	66.994	38,9



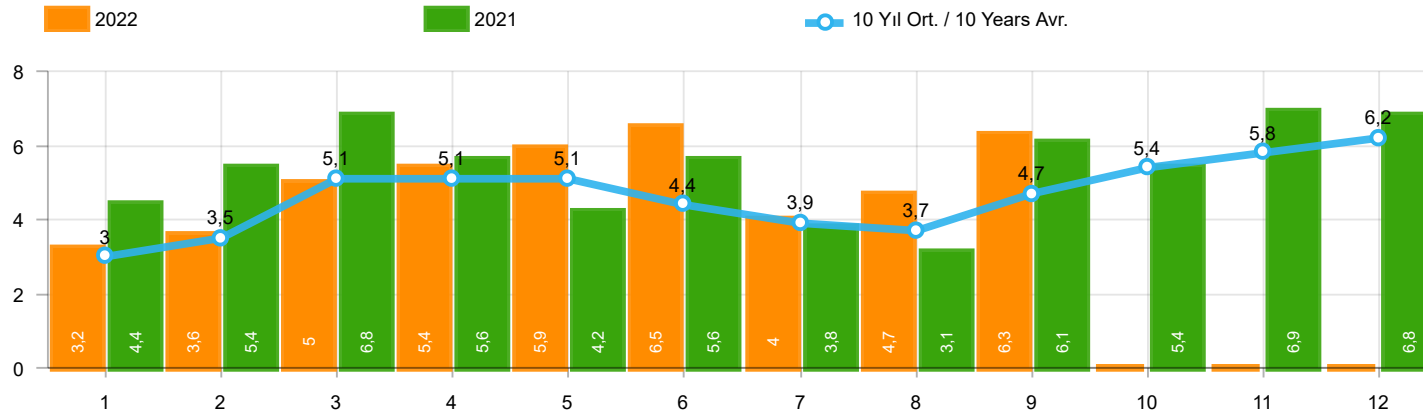
Aylar / Months	10 Yıl Ort. / 10 Years Avr.	2022	%
1	32.084	38.131	18,8
2	45.728	49.652	8,6
3	69.329	64.267	-7,3
4	63.235	60.035	-5,1
5	66.406	65.167	-1,9
6	71.120	80.652	13,4
7	62.438	52.206	-16,4
8	59.064	48.336	-18,2
9	61.987	62.084	0,2
10	64.566	65.222	1,0
TOPLAM / TOTAL	595.957	585.752	-1,7

Yıl / Year	1	2	3	4	5	6	7	8	9	10	11	12	1-10 Toplam / Total	Toplam / Total	1-10 Yerli / Local	1-10 İthal / Import	İthal Oran / Import %
2012	29.545	41.324	64.884	62.949	70.863	71.067	62.304	58.148	69.629	59.938	71.710	115.400	590.651	777.761	211.642	379.009	64,2
2013	35.523	48.307	68.774	73.575	81.468	74.096	71.596	65.043	67.963	58.014	79.301	129.718	644.359	853.378	185.428	458.931	71,2
2014	32.670	35.021	47.581	53.305	58.121	60.163	59.907	60.199	66.531	66.573	80.621	146.989	540.071	767.681	171.421	368.650	68,3
2015	34.615	55.331	83.302	91.602	81.542	86.158	83.836	82.577	64.025	64.255	84.601	156.173	727.243	968.017	235.631	491.612	67,6
2016	32.713	52.825	82.948	84.887	93.904	91.540	58.533	71.556	67.593	83.000	122.309	141.912	719.499	983.720	220.764	498.735	69,3
2017	35.323	46.965	73.802	75.988	85.422	83.658	82.297	72.536	71.352	91.752	100.859	136.240	719.095	956.194	252.593	466.502	64,9
2018	35.076	47.009	76.345	71.126	72.755	51.037	52.734	34.346	23.028	21.571	58.204	77.706	485.027	620.937	179.889	305.138	62,9
2019	14.373	24.875	49.221	30.971	33.016	42.688	17.927	26.246	41.992	49.075	58.176	90.500	330.384	479.060	141.758	188.626	57,1
2020	27.273	47.122	50.008	26.457	32.235	70.973	87.401	61.533	90.619	94.733	80.141	104.293	588.354	772.788	264.591	323.763	55,0
2021	43.728	58.504	96.428	61.488	54.734	79.819	47.849	58.454	57.141	56.746	60.216	62.243	614.891	737.350	266.194	348.697	56,7
2022	38.131	49.652	64.267	60.035	65.167	80.652	52.206	48.336	62.084	65.222			585.752	585.752	254.602	331.150	56,5



Aylar / Months	10 Yıl Ort / 10 Years Avr.	2022	%
1	8.105	9.111	12,4
2	11.047	12.011	8,7
3	16.049	14.094	-12,2
4	14.338	14.471	0,9
5	14.977	13.417	-10,4
6	15.308	16.518	7,9
7	14.221	11.175	-21,4
8	14.439	13.106	-9,2
9	14.887	17.403	16,9
10	14.857	17.782	19,7
TOPLAM / TOTAL	138.228	139.088	0,6

Yıl / Year	1	2	3	4	5	6	7	8	9	10	11	12	1-10 Toplam / Total	Toplam / Total	1-10 Yerli / Local	1-10 İthal / Import	İthal Oran / Import %
2012	8.468	12.135	17.614	17.304	20.403	20.218	17.773	16.912	20.269	16.498	19.413	34.474	167.594	221.481	95.720	71.874	42,9
2013	9.688	11.493	16.989	16.576	19.085	15.806	15.884	13.432	15.038	11.029	15.184	28.519	145.020	188.723	75.165	69.855	48,2
2014	8.302	7.854	9.769	10.536	11.742	12.885	13.305	15.068	17.269	15.759	20.926	36.935	122.489	180.350	62.700	59.789	48,8
2015	10.117	14.514	21.626	21.391	18.664	18.392	19.618	20.824	16.937	16.301	22.204	41.833	178.384	242.421	97.200	81.184	45,5
2016	9.355	12.237	18.973	19.269	20.072	20.429	12.967	17.579	16.253	19.254	26.526	33.868	166.388	226.782	86.895	79.493	47,8
2017	9.634	12.307	18.186	17.990	19.623	17.494	19.913	17.646	17.929	21.264	24.903	36.546	171.986	233.435	87.988	83.998	48,8
2018	8.465	11.108	16.547	16.018	15.528	9.812	10.710	7.370	5.433	4.762	12.000	16.863	105.753	134.616	53.194	52.559	49,7
2019	3.394	5.670	10.593	6.555	5.890	6.664	2.529	4.702	6.684	9.079	10.373	19.671	61.760	91.804	31.551	30.209	48,9
2020	5.257	9.395	10.121	4.632	7.162	13.906	17.974	17.161	19.323	18.392	15.784	23.572	123.323	162.679	77.601	45.722	37,1
2021	8.370	13.755	20.071	13.113	11.596	17.471	11.538	13.698	13.733	16.234	17.234	18.684	139.579	175.497	76.464	63.115	45,2
2022	9.111	12.011	14.094	14.471	13.417	16.518	11.175	13.106	17.403	17.782			139.088	139.088	82.950	56.138	40,4



Aylar / Months	10 Yıl Ort / 10 Years Avr.	2022	%
1	3.004	3.152	4,9
2	3.536	3.636	2,8
3	5.081	4.988	-1,8
4	5.131	5.408	5,4
5	5.095	5.873	15,3
6	4.381	6.520	48,8
7	3.942	3.985	1,1
8	3.729	4.740	27,1
9	4.680	6.265	33,9
TOPLAM / TOTAL	38.579	44.567	15,5

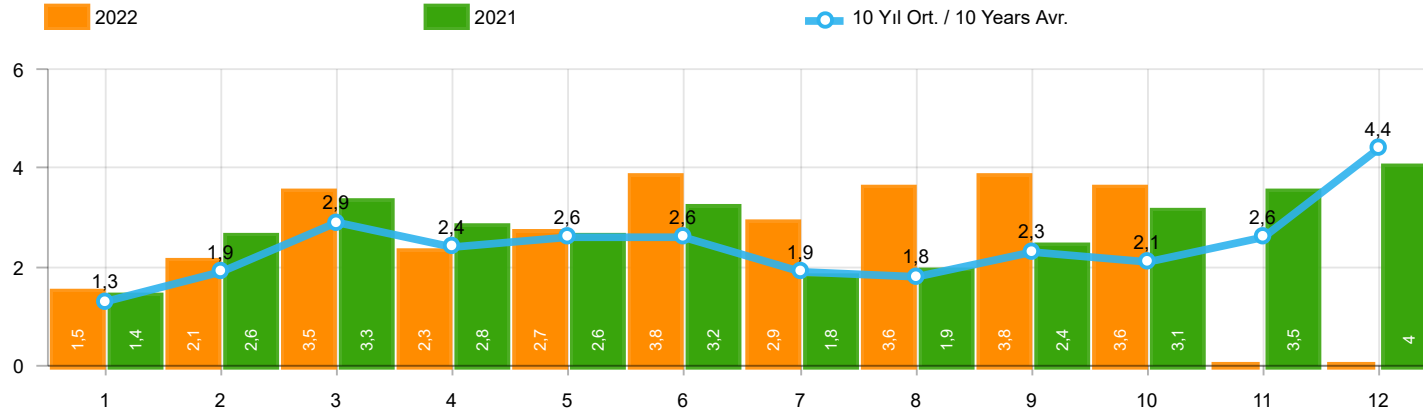
Yıl / Year	1	2	3	4	5	6	7	8	9	10	11	12	1-9 Toplam / Total	Toplam / Total
2012	2.362	1.983	4.348	6.579	6.273	4.569	3.837	3.158	3.618	4.027	4.807	4.757	36.727	50.318
2013	2.161	2.432	4.005	4.585	5.616	3.136	4.574	3.408	4.935	4.762	5.781	6.891	34.852	52.286
2014	2.169	3.512	4.476	4.905	5.094	5.028	4.233	4.920	5.619	5.743	6.250	7.409	39.956	59.358
2015	3.124	3.984	5.460	6.383	6.078	5.748	4.677	5.044	4.765	7.049	6.898	7.564	45.263	66.774
2016	3.739	4.731	7.067	6.546	6.575	5.543	3.833	5.134	4.945	7.372	7.090	7.603	48.113	70.178
2017	3.974	4.964	6.773	6.780	7.057	5.356	5.003	4.396	6.064	7.734	7.457	7.351	50.367	72.909
2018	4.362	4.179	5.925	5.216	4.584	3.146	3.654	2.587	3.541	3.698	3.578	3.886	37.194	48.356
2019	1.311	1.401	2.143	2.126	2.229	1.538	2.039	1.579	2.284	2.828	3.037	3.782	16.650	26.297
2020	2.425	2.778	3.771	2.606	3.244	4.173	3.727	3.974	4.928	5.466	5.831	6.221	31.626	49.144
2021	4.411	5.395	6.845	5.581	4.200	5.571	3.846	3.093	6.100	5.351	6.901	6.776	45.042	64.070
2022	3.152	3.636	4.988	5.408	5.873	6.520	3.985	4.740	6.265	-	-	-	44.567	44.567

Kaynak: TÜİK trafik kayıtları.

Rakamlar, son iki model yılına ait traktör tescillerinden oluşmaktadır.

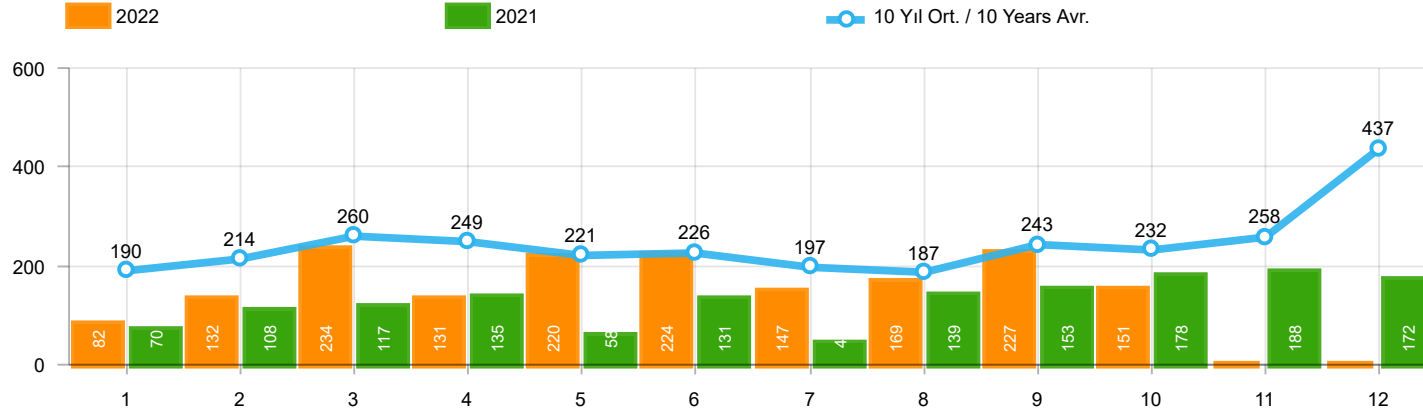
Source: Turkish Statistical Institute – Traffic registrations

Data represents the last two model year's farm tractors registration figures



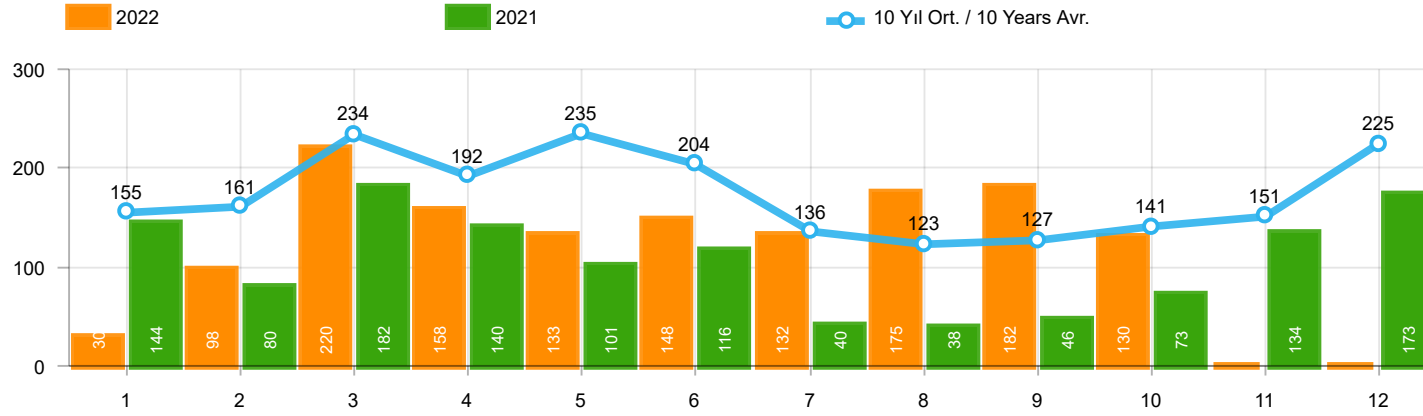
Aylar / Months	10 Yıl Ort. / 10 Years Avr.	2022	%
1	1.265	1.498	18,4
2	1.916	2.148	12,1
3	2.899	3.520	21,4
4	2.388	2.260	-5,4
5	2.558	2.701	5,6
6	2.628	3.764	43,2
7	1.926	2.939	52,6
8	1.803	3.617	100,6
9	2.283	3.811	66,9
10	2.097	3.590	71,2
TOPLAM / TOTAL	21.764	29.848	37,2

Yıl / Year	1	2	3	4	5	6	7	8	9	10	11	12	1-10 Toplam / Total	Toplam / Total	1-10 Yerli / Local	1-10 İthal / Import	İthal Oran / Import %
2012	1.703	2.454	3.866	3.209	3.678	3.540	2.750	2.403	3.296	2.497	3.154	5.300	29.396	37.850	20.071	9.325	31,7
2013	1.484	2.113	3.343	2.925	3.504	3.186	2.777	2.103	2.875	2.086	3.631	5.444	26.396	35.471	18.746	7.650	29,0
2014	1.522	2.065	3.094	3.224	3.727	3.726	2.578	2.783	3.708	2.858	3.384	6.869	29.285	39.538	20.972	8.313	28,4
2015	2.215	3.346	5.699	3.729	3.600	4.253	2.922	2.211	2.687	2.266	3.146	7.307	32.928	43.381	22.549	10.379	31,5
2016	1.167	1.648	2.515	2.319	2.711	2.623	984	1.796	1.438	2.238	2.485	3.127	19.439	25.051	13.230	6.209	31,9
2017	931	1.290	1.982	1.888	2.184	1.891	1.974	1.860	2.284	2.188	2.487	4.438	18.472	25.397	12.255	6.217	33,7
2018	1.237	1.552	2.630	2.328	1.909	1.272	1.235	603	653	488	905	1.695	13.907	16.507	8.185	5.722	41,1
2019	342	579	1.255	842	728	981	435	497	854	1.047	1.100	2.087	7.560	10.747	4.697	2.863	37,9
2020	682	1.475	1.290	628	921	1.570	1.809	1.835	2.660	2.239	2.537	3.358	15.109	21.004	9.718	5.391	35,7
2021	1.366	2.633	3.319	2.788	2.617	3.238	1.799	1.942	2.377	3.067	3.549	4.045	25.146	32.740	15.288	9.858	39,2
2022	1.498	2.148	3.520	2.260	2.701	3.764	2.939	3.617	3.811	3.590			29.848	29.848	18.992	10.856	36,4



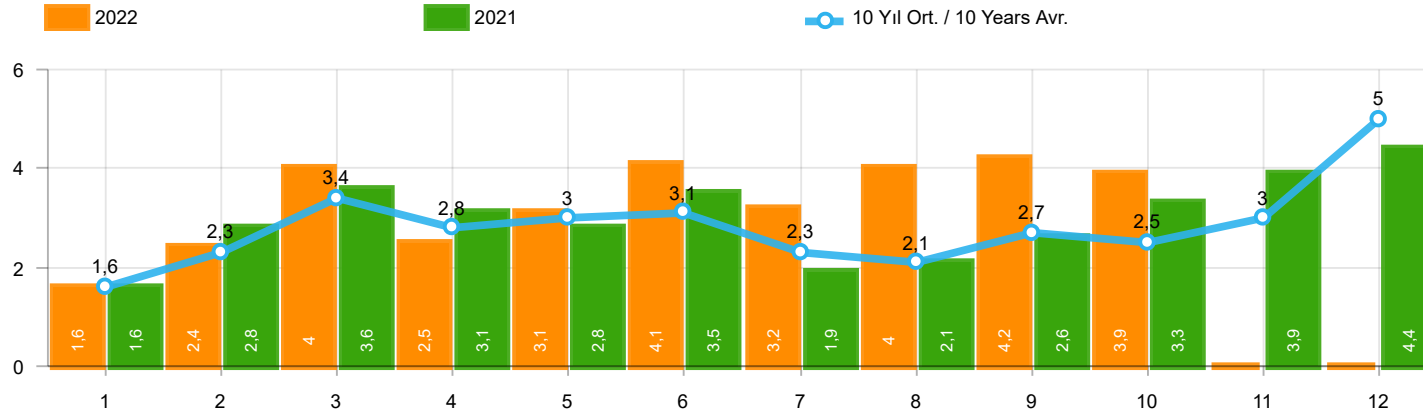
Aylar / Months	10 Yıl Ort. / 10 Years Avr.	2022	%
1	190	82	-56,8
2	214	132	-38,4
3	260	234	-9,9
4	249	131	-47,5
5	221	220	-,3
6	226	224	-1,1
7	197	147	-25,3
8	187	169	-9,8
9	243	227	-6,5
10	232	151	-34,8
11	258	188	-27,1
12	437	172	-60,4
TOPLAM / TOTAL	2.218	1.717	-22,6

Yıl / Year	1	2	3	4	5	6	7	8	9	10	11	12	1-10 Toplam / Total	Toplam / Total
2012	179	257	277	229	257	239	216	249	325	269	189	398	2.497	3.084
2013	191	268	289	276	283	241	367	235	305	392	415	697	2.847	3.959
2014	360	394	384	333	294	258	216	229	395	220	266	653	3.083	4.002
2015	280	322	451	561	372	405	389	253	316	394	325	621	3.743	4.689
2016	309	158	251	302	261	196	139	220	241	230	354	431	2.307	3.092
2017	212	211	227	231	272	156	250	235	318	268	317	594	2.380	3.291
2018	134	142	410	296	207	315	180	146	160	155	184	425	2.145	2.754
2019	57	61	63	96	106	189	55	44	138	138	257	244	947	1.448
2020	104	221	128	35	97	134	111	123	77	71	82	137	1.101	1.320
2021	70	108	117	135	58	131	44	139	153	178	188	172	1.133	1.493
2022	82	132	234	131	220	224	147	169	227	151			1.717	1.717



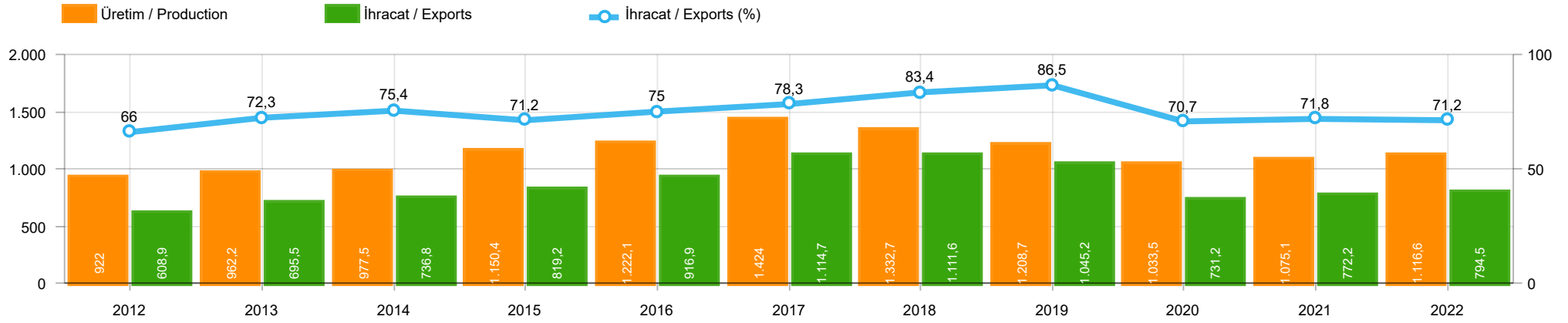
Aylar / Months	10 Yıl Ort / 10 Years Avr.	2022	%
1	155	30	-80,6
2	161	98	-39,0
3	234	220	-6,0
4	192	158	-17,8
5	235	133	-43,5
6	204	148	-27,5
7	136	132	-2,7
8	123	175	42,2
9	127	182	43,8
10	141	130	-7,7
TOPLAM / TOTAL	1.707	1.406	-17,6

Yıl / Year	1	2	3	4	5	6	7	8	9	10	11	12	1-10 Toplam / Total	Toplam / Total	1-10 Yerli / Local	1-10 İthal / Import	İthal Oran / Import %
2012	125	103	215	172	397	262	174	182	251	229	150	344	2.110	2.604	2.076	34	1,6
2013	365	445	537	489	580	520	412	281	245	198	123	189	4.072	4.384	4.045	27	0,7
2014	199	179	253	251	305	148	69	92	130	91	97	332	1.717	2.146	1.560	157	9,1
2015	146	222	313	290	290	255	211	203	153	171	359	363	2.254	2.976	2.185	69	3,1
2016	180	209	218	240	214	307	76	82	141	198	314	236	1.865	2.415	1.834	31	1,7
2017	174	119	167	124	188	115	206	187	92	231	109	235	1.603	1.947	1.589	14	0,9
2018	78	65	215	136	125	164	45	42	74	107	113	188	1.051	1.352	1.040	11	1,0
2019	75	54	112	35	97	41	25	45	84	28	42	54	596	692	596	-	-
2020	64	130	128	45	55	112	98	79	50	82	64	131	843	1.038	843	-	-
2021	144	80	182	140	101	116	40	38	46	73	134	173	960	1.267	960	-	-
2022	30	98	220	158	133	148	132	175	182	130			1.406	1.406	1.406	-	-



Aylar / Months	10 Yıl Ort / 10 Years Avr.	2022	%
1	1.610	1.610	0,0
2	2.290	2.378	3,8
3	3.393	3.974	17,1
4	2.830	2.549	-9,9
5	3.014	3.054	1,3
6	3.058	4.136	35,2
7	2.259	3.218	42,5
8	2.114	3.961	87,4
9	2.653	4.220	59,1
10	2.470	3.871	56,7
TOPLAM / TOTAL	25.689	32.971	28,4

Yıl / Year	1	2	3	4	5	6	7	8	9	10	11	12	1-10 Toplam / Total	Toplam / Total	1-10 Yerli / Local	1-10 İthal / Import	İthal Oran / Import %
2012	2.007	2.814	4.358	3.610	4.332	4.041	3.140	2.834	3.872	2.995	3.493	6.042	34.003	43.538	24.644	9.359	27,5
2013	2.040	2.826	4.169	3.690	4.367	3.947	3.556	2.619	3.425	2.676	4.169	6.330	33.315	43.814	25.638	7.677	23,0
2014	2.081	2.638	3.731	3.808	4.326	4.132	2.863	3.104	4.233	3.169	3.747	7.854	34.085	45.686	25.615	8.470	24,8
2015	2.641	3.890	6.463	4.580	4.262	4.913	3.522	2.667	3.156	2.831	3.830	8.291	38.925	51.046	28.477	10.448	26,8
2016	1.656	2.015	2.984	2.861	3.186	3.126	1.199	2.098	1.820	2.666	3.153	3.794	23.611	30.558	17.371	6.240	26,4
2017	1.317	1.620	2.376	2.243	2.644	2.162	2.430	2.282	2.694	2.687	2.913	5.267	22.455	30.635	16.224	6.231	27,7
2018	1.449	1.759	3.255	2.760	2.241	1.751	1.460	791	887	750	1.202	2.308	17.103	20.613	11.370	5.733	33,5
2019	474	694	1.430	973	931	1.211	515	586	1.076	1.213	1.399	2.385	9.103	12.887	6.240	2.863	31,5
2020	850	1.826	1.546	708	1.073	1.816	2.018	2.037	2.787	2.392	2.683	3.626	17.053	23.362	11.662	5.391	31,6
2021	1.580	2.821	3.618	3.063	2.776	3.485	1.883	2.119	2.576	3.318	3.871	4.390	27.239	35.500	17.381	9.858	36,2
2022	1.610	2.378	3.974	2.549	3.054	4.136	3.218	3.961	4.220	3.871			32.971	32.971	22.115	10.856	32,9



	2012	2013	2014	2015	2016	2017	2018	2019	2020	2021	2022
İhracat/Export	608.928	695.511	736.829	819.187	916.873	1.114.658	1.111.645	1.045.201	731.168	772.220	794.489
Üretim/Production	922.035	962.173	977.511	1.150.359	1.222.078	1.424.042	1.332.726	1.208.668	1.033.487	1.075.099	1.116.583
İhracat/Exports (%)	66	72,3	75,4	71,2	75	78,3	83,4	86,5	70,7	71,8	71,2

Taşıt Araçları İhracatı (2020 - 2022)
Motor Vehicle Exports (2020 - 2022)

SEKTÖR / SECTOR	2020	2021	1/10-2021	1/10-2022	2022/2021 %
OTOMOBİL / Pass.Car	596.616	565.370	455.664	447.374	-1,8
OTOMOBİL TOPLAM / Pass. Car Total	596.616	565.370	455.664	447.374	-1,8
KAMYON / Truck	10.333	17.293	12.230	16.486	34,8
KAMYONET / Pick Up	263.767	310.874	254.174	280.010	10,2
OTOBÜS / Bus	6.886	4.750	3.649	4.809	31,8
MİNİBÜS / Minibus	38.296	37.741	32.212	29.928	-7,1
MİDİBÜS / Midibus	640	987	754	710	-5,8
TİCARİ ARAÇLAR TOPLAM / Commercial Vehicle Total	319.922	371.645	303.019	331.943	9,5
TAŞIT ARAÇLARI TOPLAM / Motor Vehicles Total	916.538	937.015	758.683	779.317	2,7
TRAKTÖR / F.Tractor	13.495	17.038	13.537	15.172	12,1
TRAKTÖR TOPLAM / F.Tractor Total	13.495	17.038	13.537	15.172	12,1
GENEL TOPLAM / GRAND TOTAL	930.033	954.053	772.220	794.489	2,9

Üretici Bazında İhracat (adet)
Exports by Manufacturer (unit)

Üreticiler / Manufacturers	2020	2021	1-10 / 2021	1-10 / 2022
A.I.O.S.	510	1.100	800	593
FORD OTOSAN	254.003	287.609	236.936	248.668
HATTAT TRAKTÖR	942	862	667	930
HYUNDAI ASSAN	128.003	138.739	120.537	147.252
KARSAN	755	2.135	1.437	166
M. BENZ TÜRK	11.184	13.911	9.720	12.761
MAN TÜRKİYE	2.628	1.573	1.386	1.302
OTOKAR	862	749	554	876
OYAK RENAULT	211.954	187.923	142.285	123.709
TEMSA	243	599	412	428
TOFAŞ	117.886	112.465	93.171	100.870
TOYOTA	182.089	187.907	149.140	142.692
TÜRK TRAKTÖR	12.553	16.176	12.870	14.242
GENEL TOPLAM / Grand Total	923.612	951.748	769.915	794.489

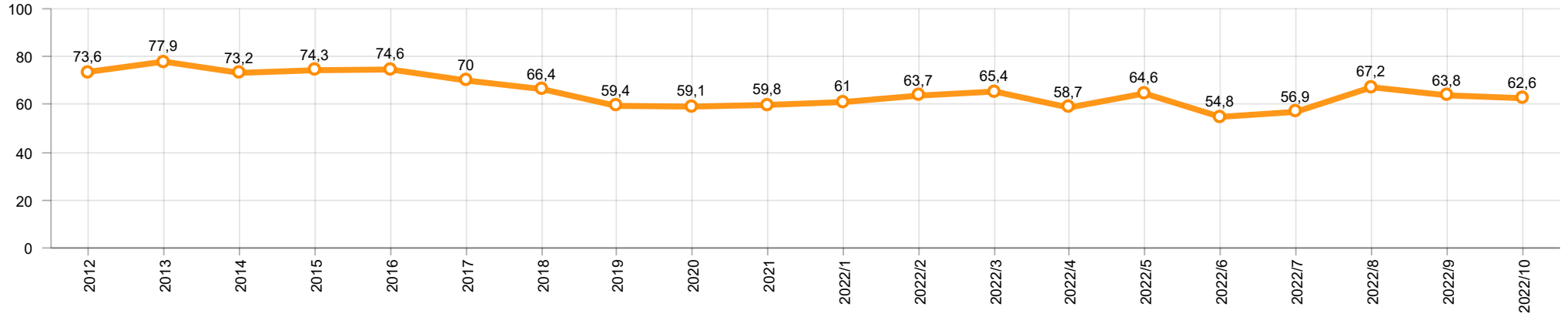
Otomotiv Ana ve Yan Sanayii İhracatı (ABD \$)
CBU and CKD Exports - \$

Sektör / Sector	2020	2021	OCAK - EKİM / January - October 2021	OCAK - EKİM / January - October 2022	2022 / 2021 %
Toplam Yan Sanayi / Total Component Industry	9.451.378.035,13	11.828.543.645,48	9.782.813.134,58	10.613.268.550,65	8,5
İç ve Dış Lastik / Tyres	1.248.005.046,63	1.630.375.443,31	1.346.844.421,22	1.501.332.660,47	11,5
Emniyet Camı / Safety Glasses	140.318.241,91	203.192.786,93	163.928.773,54	193.365.996,21	18,0
Motor / Engine	461.449.027,72	296.695.616,13	258.340.422,13	199.566.480,33	-22,8
Akümülatör / Batteries	352.961.830,19	509.418.521,65	401.766.690,65	435.311.749	8,3
Diğer Aksam ve Parça / Spare Parts&Components	7.248.643.888,68	9.188.861.277,46	7.611.932.827,04	8.283.691.664,64	8,8
Toplam Ana Sanayi / Total Vehicle Industry	16.490.597.055,37	18.050.043.451,69	14.534.445.509,02	14.752.071.761,72	1,5
Otobüs / Bus	1.300.660.458,98	1.015.438.742,73	774.723.453,75	856.003.760,91	10,5
Midibüs-Minibüs / Midibus-Minibus	188.434.401,85	193.988.030,64	148.939.972,51	130.155.974,1	-12,6
Otomobil / P.Cars	9.312.088.333,82	9.272.092.055,42	7.539.656.200,3	7.140.714.727,05	-5,3
Kamyon-Kamyonet / Truck-Pick Up&Van	4.254.571.750,06	5.420.336.459,32	4.445.314.733,51	4.584.167.848,71	3,1
Römork ve Yarı Römork / Trailer-Semi Trailer	417.223.779,08	609.835.352,93	475.214.698,87	601.285.556,66	26,5
Çekici / Tractor	602.899.223,51	1.018.404.947,4	730.423.817,46	1.005.926.195,64	37,7
Tarım Traktörü / Farm Tractor	414.719.108,07	519.947.863,25	420.172.632,62	433.817.698,65	3,2
Toplam / Total	25.941.975.090,5	29.878.587.097,17	24.317.258.643,6	25.365.340.312,37	4,3

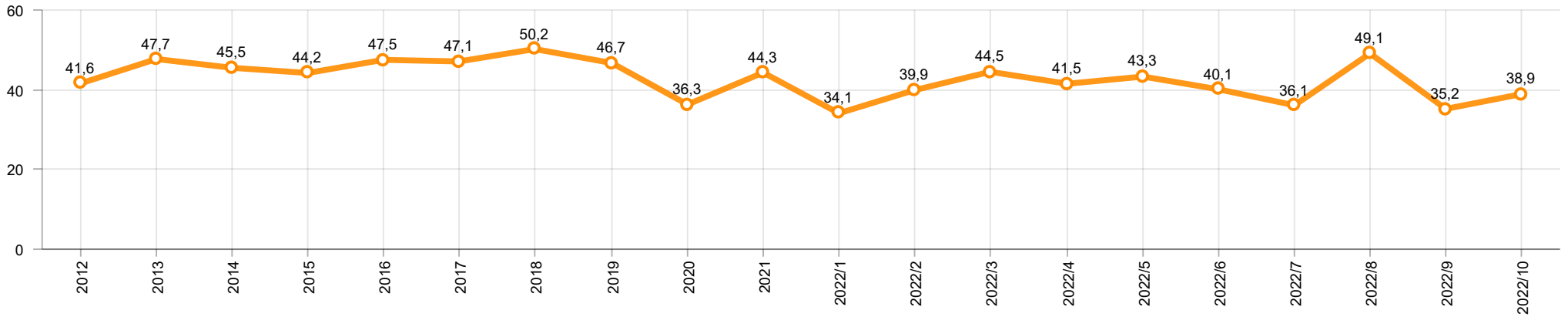
Kaynak: Uludağ İhracatçı Birlikleri . ÜİB tarafından OSD için özel olarak analiz edilen Otomotiv İhracatı kapsamında; ÜİB Türkiye Geneli Otomotiv Endüstrisi sınıflandırmasına kıyasla “Römork ve Yarı Römork” , “Tarım Traktörü” verileri dahil edilmekte; “Kullanılmış Araçlar” ,”İki Tekerlekli Taşıtlar” , “Demiryolu Taşıtları” hariç tutulmaktadır.

Source: Uludağ Exporters Association – Special Analyze for OSD.Compared to Turkish General Automotive Industry classification, this special analyze includes; farms tractors, trailers and semi-trailers, does not include; used vehicles, two-wheeled vehicles and railway vehicles

Otomobil Pazarında İthalatın Payı (%)
Import Share in P.Car Market (%)



Hafif Ticari Araçlar Pazarında İthalatın Payı (%)
Import Share in LCV Market (%)



Araç Tipleri / Vehicle Types	1	2	3	4	5	6	7	8	9	10	11	12	Toplam / Total
OTOMOBİL - Pass.Car	34.999	50.683	38.917	43.196	48.097	55.162	27.319	41.028	57.201	50.772			447.374
KAMYON - H. Truck	891	1.232	3.016	1.868	999	1.718	884	1.373	2.310	2.134			16.425
K.KAMYON - L. Truck	-	-	-	-	-	-	-	-	30	31			61
KAMYONET - Pick Up	28.351	24.486	32.602	27.851	25.822	25.905	27.645	18.636	34.015	34.697			280.010
OTOBÜS - Bus	163	309	473	302	457	684	505	711	481	724			4.809
MİNİBÜS - Minibus	3.477	1.978	3.824	2.887	3.186	3.054	3.208	2.705	2.682	2.927			29.928
MİDİBÜS - Midibus	9	47	92	69	102	97	75	60	91	68			710
TİCARİ ARAÇLAR TOPLAMI - CV Total	32.891	28.052	40.007	32.977	30.566	31.458	32.317	23.485	39.609	40.581			331.943
TAŞIT ARAÇLARI TOPLAMI - MV Total	67.890	78.735	78.924	76.173	78.663	86.620	59.636	64.513	96.810	91.353			779.317
TRAKTÖR - F.Tractor	1.371	1.751	1.572	1.362	1.234	1.616	1.207	1.430	1.788	1.841			15.172
GENEL TOPLAM - Grand Total	69.261	80.486	80.496	77.535	79.897	88.236	60.843	65.943	98.598	93.194			794.489

Otomobil / P.Car

Firmalar / Firms	1	2	3	4	5	6	7	8	9	10	11	12	Toplam / Total
FORD OTOSAN	200	452	932	37	149	72	147	135	400	15	-	-	2.539
HYUNDAI ASSAN	10.000	16.200	15.667	15.750	18.275	17.940	14.000	6.500	17.726	15.194	-	-	147.252
OYAK RENAULT	5.484	10.845	6.891	6.757	12.250	18.959	1.102	22.434	17.441	21.546	-	-	123.709
TOFAŞ	3.791	1.311	1.442	2.230	5.072	5.288	3.025	1.578	3.237	4.208	-	-	31.182
TOYOTA	15.524	21.875	13.985	18.422	12.351	12.903	9.045	10.381	18.397	9.809	-	-	142.692
TOPLAM - Total	34.999	50.683	38.917	43.196	48.097	55.162	27.319	41.028	57.201	50.772	-	-	447.374

Kamyonet / Pick-up

Firmalar / Firms	1	2	3	4	5	6	7	8	9	10	11	12	Toplam / Total
A.I.O.S.	-	-	-	-	-	-	-	-	-	-	-	-	-
FORD OTOSAN	21.967	16.649	25.509	21.371	19.403	20.926	21.493	14.471	23.129	25.331	-	-	210.249
KARSAN	-	-	-	-	-	-	-	-	-	-	-	-	-
OTOKAR	29	-	10	-	16	10	-	-	-	8	-	-	73
TOFAŞ	6.355	7.837	7.083	6.480	6.403	4.969	6.152	4.165	10.886	9.358	-	-	69.688
TOPLAM - Total	28.351	24.486	32.602	27.851	25.822	25.905	27.645	18.636	34.015	34.697	-	-	280.010

Minibüs / Minibus

Firmalar / Firms	1	2	3	4	5	6	7	8	9	10	11	12	Toplam / Total
FORD OTOSAN	3.476	1.977	3.816	2.875	3.184	3.044	3.205	2.699	2.638	2.926	-	-	29.840
KARSAN	1	1	8	12	2	10	3	6	44	1	-	-	88
TOPLAM - Total	3.477	1.978	3.824	2.887	3.186	3.054	3.208	2.705	2.682	2.927	-	-	29.928

Kamyon / Truck

Firmalar / Firms	1	2	3	4	5	6	7	8	9	10	11	12	Toplam / Total
A.I.O.S.	-	-	-	-	-	-	-	-	30	30	-	-	60
FORD OTOSAN	240	700	712	658	236	669	591	782	937	515	-	-	6.040
KARSAN	-	-	-	-	-	-	-	-	-	-	-	-	-
M. BENZ TÜRK	651	532	2.304	1.210	763	1.049	293	591	1.373	1.619	-	-	10.385
OTOKAR	-	-	-	-	-	-	-	-	-	1	-	-	1
TEMSA	-	-	-	-	-	-	-	-	-	-	-	-	-
TOPLAM - Total	891	1.232	3.016	1.868	999	1.718	884	1.373	2.340	2.165	-	-	16.486

Midibüs / Midibus

Firmalar / Firms	1	2	3	4	5	6	7	8	9	10	11	12	Toplam / Total
A.I.O.S.	5	26	41	48	68	36	20	25	44	20	-	-	333
KARSAN	-	-	19	4	2	32	-	2	7	-	-	-	66
OTOKAR	3	12	27	14	29	27	53	27	18	32	-	-	242
TEMSA	1	9	5	3	3	2	2	6	22	16	-	-	69
TOPLAM - Total	9	47	92	69	102	97	75	60	91	68	-	-	710

Otobüs / Bus

Firmalar / Firms	1	2	3	4	5	6	7	8	9	10	11	12	Toplam / Total
A.I.O.S.	9	14	20	9	16	30	24	16	35	27	-	-	200
KARSAN	-	-	-	-	4	4	4	-	-	-	-	-	12
M. BENZ TÜRK	3	225	258	131	239	262	252	404	243	359	-	-	2.376
MAN TÜRKİYE	85	39	127	118	156	258	111	122	112	174	-	-	1.302
OTOKAR	57	12	37	15	23	54	79	105	47	131	-	-	560
TEMSA	9	19	31	29	19	76	35	64	44	33	-	-	359
TOPLAM - Total	163	309	473	302	457	684	505	711	481	724	-	-	4.809

Traktör / F.Tractor

Firmalar / Firms	1	2	3	4	5	6	7	8	9	10	11	12	Toplam / Total
HATTAT TRAKTÖR	121	142	37	178	88	86	46	28	70	134	-	-	930
TÜRK TRAKTÖR	1.250	1.609	1.535	1.184	1.146	1.530	1.161	1.402	1.718	1.707	-	-	14.242
TOPLAM - Total	1.371	1.751	1.572	1.362	1.234	1.616	1.207	1.430	1.788	1.841	-	-	15.172

Firmalar / Firms	2021 Toplam / Total	1	2	3	4	5	6	7	8	9	10	11	12	Toplam / Total
Alfa Romeo	197	1	4	4	8	15	8	3	111	95	78	-	-	327
Aston Martin	33	3	2	1	2	1	2	3	1	3	3	-	-	21
Audi	14.036	744	1.126	1.810	1.051	1.260	1.161	718	644	451	1.502	-	-	10.467
Bentley	11	1	2	2	2	1	1	-	2	-	1	-	-	12
BMW	15.555	414	1.449	1.166	1.094	1.131	1.216	1.359	1.201	1.756	2.496	-	-	13.282
Citroen	22.551	1.601	1.382	2.132	2.041	1.014	1.952	1.163	1.015	2.101	1.120	-	-	15.521
CUPRA	285	29	44	197	287	232	358	59	146	523	472	-	-	2.347
Dacia	27.672	2.748	2.897	3.385	2.179	3.321	3.389	3.566	2.376	2.773	3.687	-	-	30.321
DFSK	53	-	11	56	33	-	77	18	31	22	10	-	-	258
DS	918	31	64	84	237	76	144	183	239	157	206	-	-	1.421
Ferrari	22	-	3	2	3	2	2	2	1	1	2	-	-	18
Fiat	1.089	12	18	53	44	33	15	6	6	4	3	-	-	194
Ford	11.726	773	683	511	670	907	546	406	738	505	695	-	-	6.434
Honda	8.558	1.314	1.805	2.708	1.875	2.064	1.762	1.334	1.463	1.958	1.741	-	-	18.024
Hyundai	14.788	880	1.420	1.651	1.807	1.254	793	702	1.397	1.042	965	-	-	11.911
Jaguar	138	-	2	2	12	8	11	8	28	13	3	-	-	87
Jeep	3.164	156	164	417	203	228	247	61	90	106	85	-	-	1.757
Kia	15.250	628	853	583	1.823	1.309	1.672	1.268	1.508	2.161	2.027	-	-	13.832
Lamborghini	16	2	-	-	-	1	-	-	5	1	1	-	-	10
Land Rover	1.804	80	59	90	111	91	58	112	139	77	30	-	-	847
Lexus	232	17	5	13	24	31	67	18	21	33	31	-	-	260
Maserati	101	5	8	18	19	7	11	19	37	44	33	-	-	201
Mazda	153	6	9	14	4	13	25	29	14	17	15	-	-	146
Mercedes-Benz	15.398	529	624	1.296	1.177	1.604	2.278	957	1.690	1.894	1.757	-	-	13.806
MG	468	24	40	119	171	135	141	8	25	46	109	-	-	818
Mini	1.394	63	50	139	41	39	79	104	141	125	106	-	-	887
Mitsubishi	1.139	23	13	99	116	89	54	37	36	24	11	-	-	502
Nissan	12.780	327	311	460	1.060	1.166	885	294	372	400	1.025	-	-	6.300
Opel	20.754	1.580	2.252	2.753	592	3.793	3.574	1.958	1.125	1.913	1.487	-	-	21.027
Peugeot	28.998	1.397	2.277	1.900	759	1.636	3.037	765	900	2.029	1.519	-	-	16.219
Porsche	627	17	61	88	18	38	30	84	43	49	43	-	-	471
Renault	9.285	1.473	1.270	1.763	953	2.493	1.890	1.363	1.089	1.099	745	-	-	14.138
Seat	12.457	272	483	901	592	818	543	367	322	200	171	-	-	4.669
Skoda	25.228	923	1.683	2.108	1.635	1.270	2.149	1.011	976	1.198	2.520	-	-	15.473
Ssangyong	587	72	76	39	58	39	33	65	33	67	42	-	-	524
Subaru	796	30	33	70	58	75	41	30	44	44	51	-	-	476
Suzuki	3.826	20	68	209	125	92	169	171	324	323	501	-	-	2.002
Toyota	2.275	71	82	219	187	366	378	281	287	186	314	-	-	2.371
Volkswagen	53.523	1.218	2.131	5.162	5.405	5.963	5.584	4.641	4.055	4.393	3.055	-	-	41.607
Volvo	8.000	225	500	576	260	827	774	154	991	682	1.035	-	-	6.024
GENEL TOPLAM - Grand Total	335.896	17.709	23.964	32.800	26.736	33.442	35.156	23.327	23.666	28.515	29.697	-	-	275.012

Firmalar / Firms	2021 Toplam / Total	1	2	3	4	5	6	7	8	9	10	11	12	Toplam / Total
Citroen	6.220	274	475	455	790	222	670	186	450	686	609	-	-	4.817
Fiat	2.503	81	54	123	38	131	126	50	238	232	112	-	-	1.185
Ford	1.790	71	64	58	112	148	113	42	77	98	109	-	-	892
Hyundai	1.595	33	128	53	353	353	520	198	272	228	174	-	-	2.312
Isuzu	721	28	26	110	57	135	188	66	95	112	185	-	-	1.002
Iveco	2.652	118	222	262	231	325	131	194	207	309	282	-	-	2.281
Kia	1.333	54	88	333	209	265	368	305	220	62	1	-	-	1.905
Land Rover	-	-	-	-	3	2	70	115	17	29	81	-	-	317
Mercedes-Benz	6.100	52	312	555	391	303	587	142	356	562	431	-	-	3.691
Mitsubishi	3.775	94	88	230	278	240	116	87	99	74	45	-	-	1.351
Nissan	1.316	51	65	108	70	67	26	6	1	1	-	-	-	395
Opel	5.167	266	539	433	315	207	541	90	666	571	292	-	-	3.920
Peugeot	9.970	443	868	727	827	333	944	457	680	894	402	-	-	6.575
Renault	5.719	638	759	757	649	1.612	1.102	836	801	1.046	853	-	-	9.053
Ssangyong	420	-	8	28	19	57	39	31	32	50	34	-	-	298
Toyota	6.689	490	543	941	1.109	943	556	459	1.248	838	1.166	-	-	8.293
Volkswagen	14.663	412	555	1.103	557	471	522	770	976	338	2.147	-	-	7.851
GENEL TOPLAM - Grand Total	77.827	3.105	4.794	6.276	6.008	5.814	6.619	4.034	6.435	6.130	6.923	-	-	56.138