



OTOMOTİV SANAYİİ DERNEĐİ
AUTOMOTIVE MANUFACTURERS ASSOCIATION

OTOMOTİV SEKTÖRÜ AYLIK DEĐERLENDİRME RAPORU NİSAN 2023

AUTOMOTIVE INDUSTRY MONTHLY REPORT
April 2023

OSD "OICA" Üyesidir © O I C A OSD is a Member of "OICA"

	4 - 2022	4 - 2023	%	1 - 4 / 2022	1 - 4 / 2023	%	5/2021 - 4/2022	5/2022 - 4/2023	%
Otomobil Üretimi/P.Cars Production	62.837	73.637	17,2	229.200	295.688	29,0	725.431	877.377	21,0
Toplam Üretim/Total Production	107.180	112.733	5,2	409.914	479.330	16,9	1.236.474	1.422.064	15,0
Otomobil Pazarı/P.Cars Market	45.564	77.398	69,9	162.398	252.819	55,7	519.412	683.081	31,5
Toplam Pazar/Total Market	62.584	102.064	63,1	222.596	350.078	57,3	724.216	954.645	31,8
Otomobil İthalatı/P.Cars Import	26.736	50.426	88,6	101.209	163.571	61,6	312.000	424.017	35,9
Toplam İthalat/Total Import	33.602	62.813	86,9	124.300	207.866	67,2	395.428	537.725	36,0
Otomobil İhracatı/P.Cars Export	43.196	48.635	12,6	167.795	205.398	22,4	521.109	608.821	16,8
Toplam İhracat/Total Export	76.173	75.412	-1,0	301.722	329.240	9,1	899.535	997.642	10,9
Otomobil İhracatı(\$)/P.Cars Export (\$)	789.191.705,32	876.824.937,06	11,1	2.872.765.595	3.455.567.796	20,3	8.599.085.202	9.652.348.137	12,3
Toplam İhracat(\$)/Total Export (\$)*	2.774.767.294,2	2.757.784.069,83	-0,6	10.324.854.913	11.585.014.541	12,2	29.848.235.456	32.761.714.715	9,8

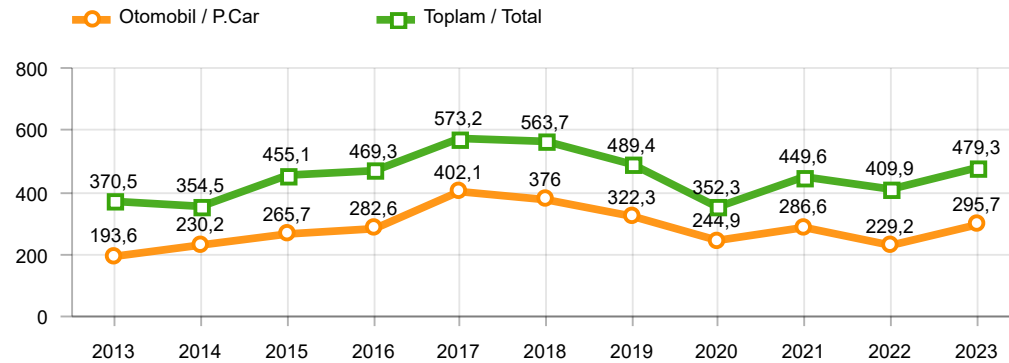
Parametreler/Parameters	4 - 2022	4 - 2023	%	1 - 4 / 2022	1 - 4 / 2023	%	5/2021 - 4/2022	5/2022 - 4/2023	%
ÜFE / PPI	7,7	0,8	-	39,2	7,1	-	72,0	105,5	-
TÜFE / CPI	7,3	2,4	-	31,7	15,2	-	34,5	67,2	-
Sanayi Endeksi / Industry Index	7,4	2,5	-	36,0	12,9	-	69,8	89,2	-
Dolar \$ ** (1 birim)	14,7	19,3	31,5	14,1	18,9	34,5	11,0	18,1	64,9
Euro € ** (1 birim)	15,9	21,1	32,7	15,7	20,4	30,4	12,6	18,9	50,2
Japon Yeni ¥ ** (100 birim)	11,6	14,4	24,2	11,8	14,2	20,3	9,6	13,3	38,9

*Toplam Sanayi / Total Industry Including Components

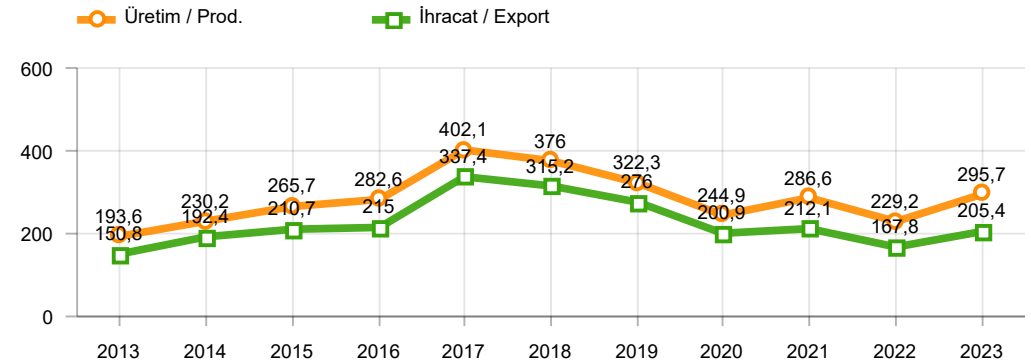
** Ortalama Değerler / Average Values

Araç Tipleri / Types	4 / 2022	4 / 2023	4 % Değişim	1-4 / 2022	1-4 / 2023	1-4 % Değişim
OTOMOBİL / Pass.Car	62.837	73.637	17,2	229.200	295.688	29,0
OTOMOBİL Toplam / Pass.Car Total	62.837	73.637	17,2	229.200	295.688	29,0
B.KAMYON / H. Truck	3.412	3.575	4,8	13.667	15.417	12,8
K.KAMYON / L. Truck	398	412	3,5	1.644	1.497	-8,9
KAMYONET / Pick Up	35.697	29.361	-17,7	145.038	143.140	-1,3
OTOBÜS / Bus	483	910	88,4	1.805	2.924	62,0
MINİBÜS / Minibus	4.119	4.471	8,5	17.710	19.236	8,6
MİDİBÜS / Midibus	234	367	56,8	850	1.428	68,0
TİCARİ ARAÇLAR Toplam / Commercial Vehicles Total	44.343	39.096	-11,8	180.714	183.642	1,6
TAŞIT ARAÇLARI Toplam / Motor Vehicles Total	107.180	112.733	5,2	409.914	479.330	16,9
TRAKTÖR / F.Tractor	4.038	4.690	16,1	16.714	20.597	23,2
TRAKTÖR Toplam / F.Tractor Total	4.038	4.690	16,1	16.714	20.597	23,2
GENEL TOPLAM / Grand Total	111.218	117.423	5,6	426.628	499.927	17,2

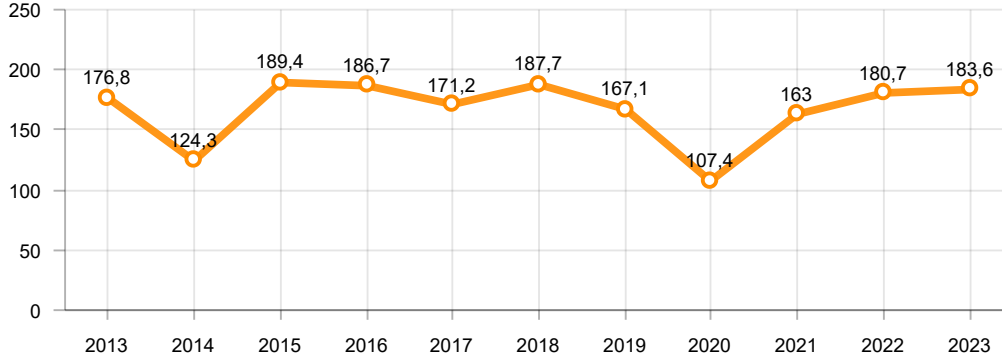
Toplam Üretim ve Otomobil Üretimi (x1000)(OCAK - NİSAN)
Total & P.Cars Production (x1000)(January - April)



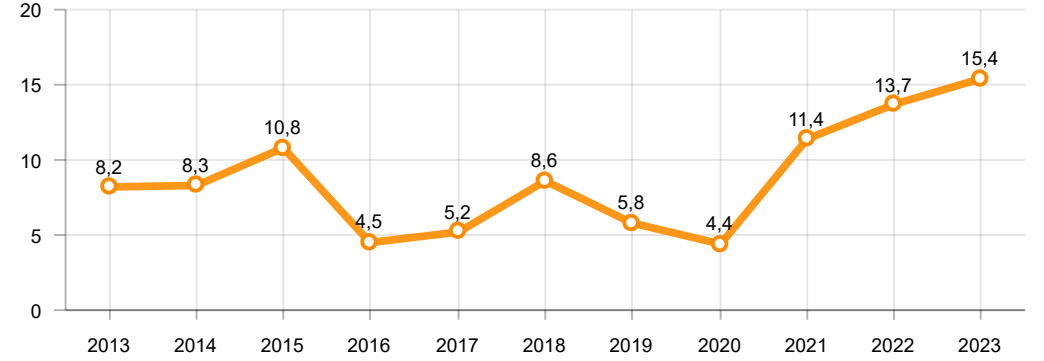
Otomobil Üretimi ve İhracat (x1000)(OCAK - NİSAN)
P.Cars Production & Exports (x1000)(January - April)



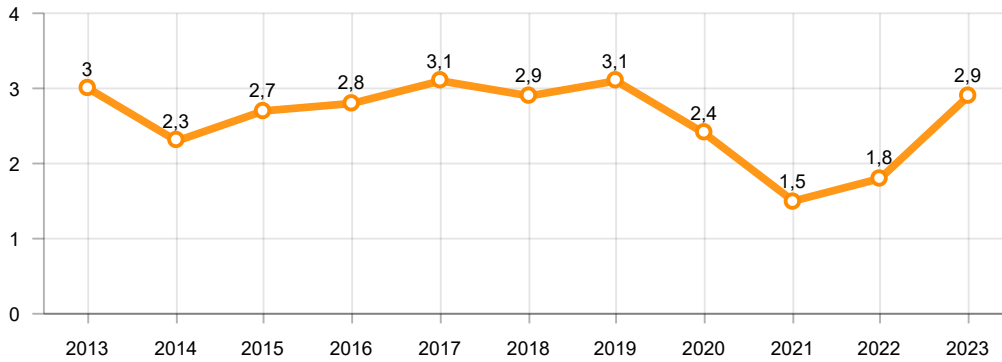
Ticari Araç Üretimi (x1000)(OCAK - NİSAN)
Commercial Vehicle Production (x1000)(January - April)



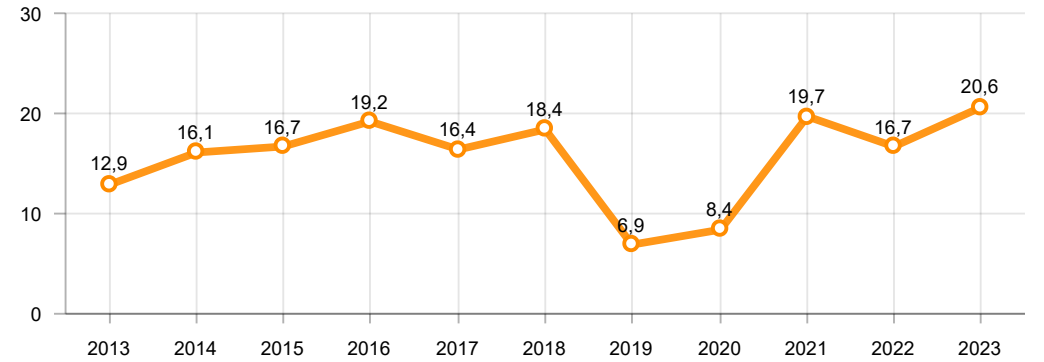
Büyük Kamyon Üretimi (x1000)(OCAK - NİSAN)
Heavy Truck Production (x1000)(January - April)

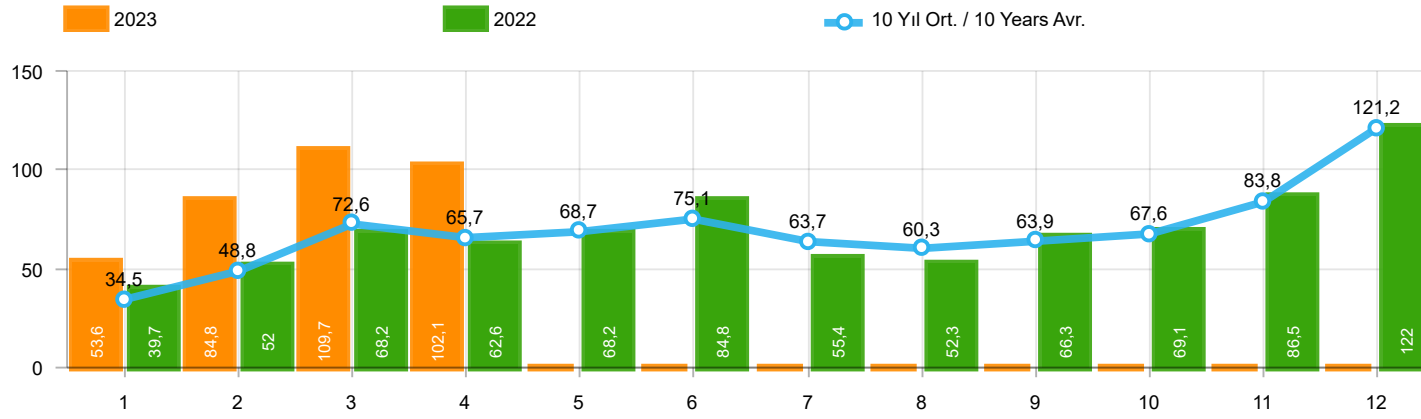


Otobüs Üretimi (x1000)(OCAK - NİSAN)
Bus Production (x1000)(January - April)



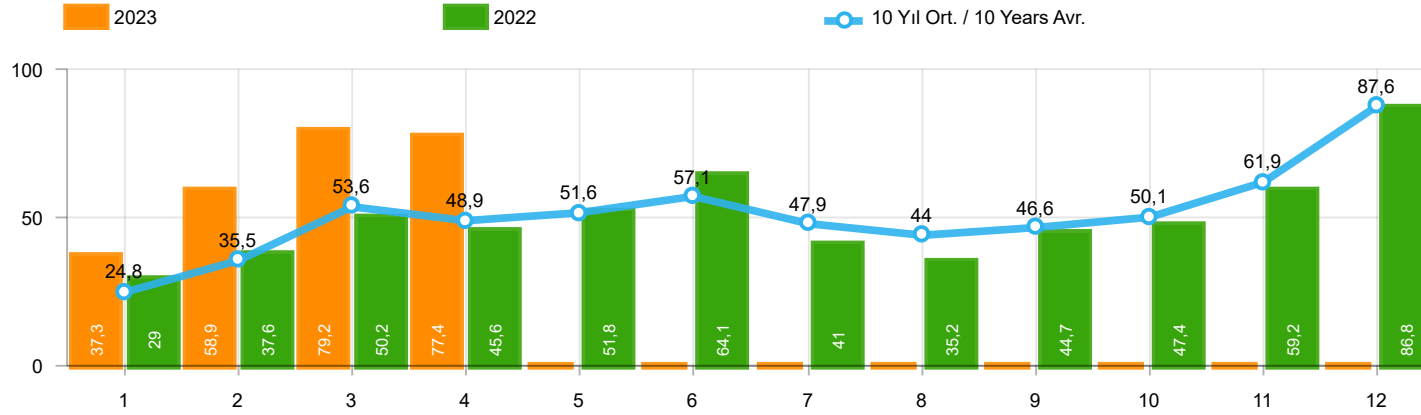
Traktör Üretimi (x1000)(OCAK - NİSAN)
F. Tractor Production (x1000)(January - April)





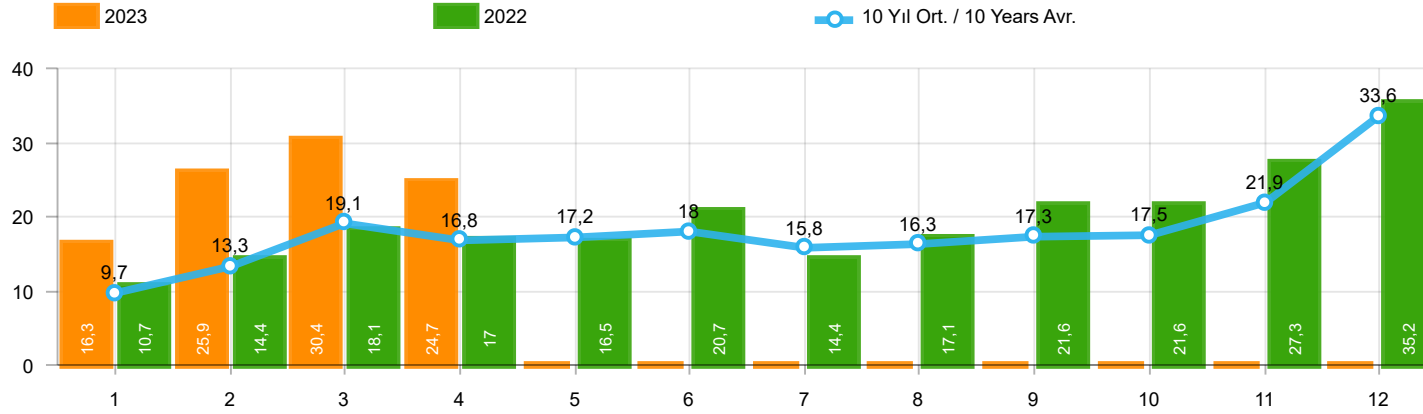
Aylar / Months	10 Yıl Ort. / 10 Years Avr.	2023	%
1	34.512	53.575	55,2
2	48.807	84.781	73,7
3	72.622	109.658	51,0
4	65.666	102.064	55,4
TOPLAM/TOTAL	221.609	350.078	58,0

Yıl / Year	1	2	3	4	5	6	7	8	9	10	11	12	1-4 Toplam / Total	Toplam / Total	1-4 Yerli / Local	1-4 İthal / Import	İthal Oran / Import %
2013	37.563	51.133	72.943	77.265	85.835	78.043	75.152	67.662	71.388	60.690	83.470	136.048	238.904	897.192	75.732	163.172	68,3
2014	34.751	37.659	51.312	57.113	62.447	64.295	62.770	63.303	70.764	69.742	84.368	154.843	180.835	813.367	60.174	120.661	66,7
2015	37.256	59.221	89.765	96.182	85.804	91.071	87.358	85.244	67.181	67.086	88.431	164.464	282.424	1.019.063	105.860	176.564	62,5
2016	34.369	54.840	85.932	87.748	97.090	94.666	59.732	73.654	69.413	85.666	125.462	145.706	262.889	1.014.278	89.730	173.159	65,9
2017	36.640	48.585	76.178	78.231	88.066	85.820	84.727	74.818	74.046	94.439	103.772	141.507	239.634	986.829	88.308	151.326	63,1
2018	36.525	48.768	79.600	73.886	74.996	52.788	54.194	35.137	23.915	22.321	59.406	80.014	238.779	641.550	91.519	147.260	61,7
2019	14.847	25.569	50.651	31.944	33.947	43.899	18.442	26.832	43.068	50.288	59.575	92.885	123.011	491.947	54.978	68.033	55,3
2020	28.123	48.948	51.554	27.165	33.308	72.789	89.419	63.570	93.406	97.125	82.824	107.919	155.790	796.150	62.577	93.213	59,8
2021	45.308	61.325	100.046	64.551	57.510	83.304	49.732	60.573	59.717	60.064	64.087	66.633	271.230	772.850	116.625	154.605	57,0
2022	39.741	52.030	68.241	62.584	68.221	84.788	55.424	52.297	66.304	69.072	86.499	121.962	222.596	827.163	98.296	124.300	55,8
2023	53.575	84.781	109.658	102.064									350.078	350.078	142.212	207.866	59,4



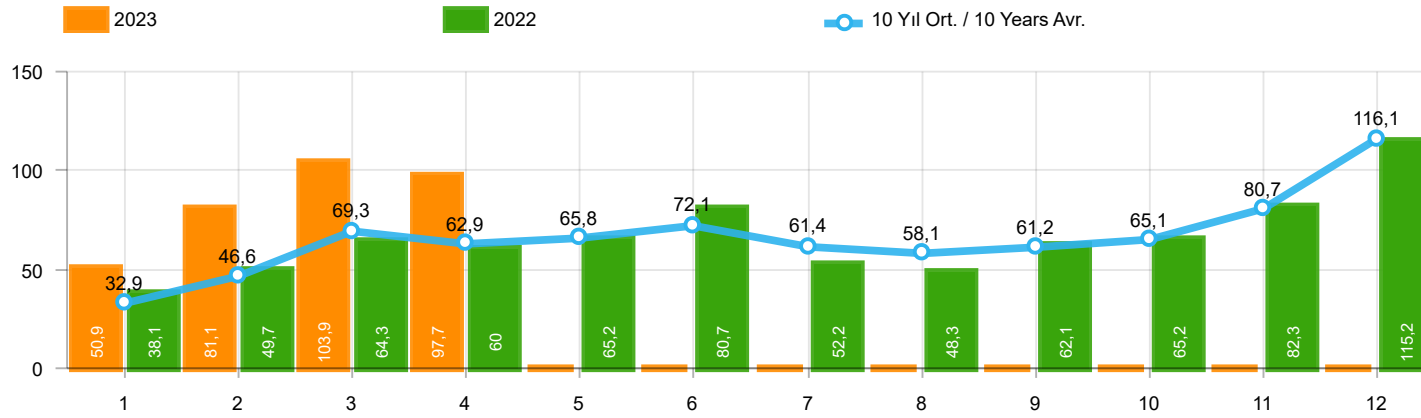
Aylar / Months	10 Yıl Ort. / 10 Years Avr.	2023	%
1	24.773	37.288	50,5
2	35.527	58.907	65,8
3	53.571	79.226	47,9
4	48.888	77.398	58,3
TOPLAM / TOTAL	162.759	252.819	55,3

Yıl / Year	1	2	3	4	5	6	7	8	9	10	11	12	1-4 Toplam / Total	Toplam / Total	1-4 Yerli / Local	1-4 İthal / Import	İthal Oran / Import %
2013	25.835	36.814	51.785	56.999	62.383	58.290	55.712	51.611	52.925	46.985	64.117	101.199	171.433	664.655	36.802	134.631	78,5
2014	24.368	27.167	37.812	42.769	46.379	47.278	46.602	45.131	49.262	50.814	59.695	110.054	132.116	587.331	32.808	99.308	75,2
2015	24.498	40.817	61.676	70.211	62.878	67.766	64.218	61.753	47.088	47.954	62.397	114.340	197.202	725.596	54.215	142.987	72,5
2016	23.358	40.588	63.975	65.618	73.832	71.111	45.566	53.977	51.340	63.746	95.783	108.044	193.539	756.938	51.824	141.715	73,2
2017	25.689	34.658	55.616	57.998	65.799	66.164	62.384	54.890	53.423	70.488	75.956	99.694	173.961	722.759	53.206	120.755	69,4
2018	26.611	35.901	59.798	55.108	57.227	41.225	42.024	26.976	17.595	16.809	46.204	60.843	177.418	486.321	58.994	118.424	66,7
2019	10.979	19.205	38.628	24.416	27.126	36.024	15.398	21.544	35.308	39.996	47.803	70.829	93.228	387.256	38.617	54.611	58,6
2020	22.016	37.727	39.887	21.825	25.073	57.067	69.427	44.372	71.296	76.341	64.357	80.721	121.455	610.109	42.529	78.926	65,0
2021	35.358	44.749	76.357	48.375	43.138	62.348	36.311	44.756	43.408	40.512	42.982	43.559	204.839	561.853	79.734	125.105	61,1
2022	29.020	37.641	50.173	45.564	51.750	64.134	41.031	35.230	44.681	47.440	59.222	86.774	162.398	592.660	61.189	101.209	62,3
2023	37.288	58.907	79.226	77.398									252.819	252.819	89.248	163.571	64,7



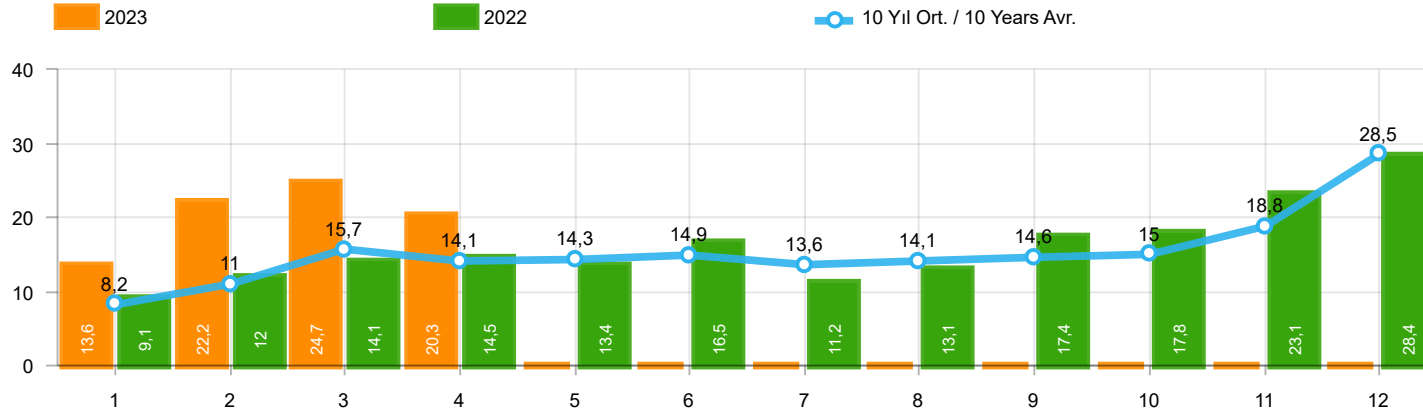
Aylar / Months	10 Yıl Ort. / 10 Years Avr.	2023	%
1	9.739	16.287	67,2
2	13.281	25.874	94,8
3	19.052	30.432	59,7
4	16.779	24.666	47,0
TOPLAM / TOTAL	58.850	97.259	65,3

Yıl / Year	1	2	3	4	5	6	7	8	9	10	11	12	1-4 Toplam / Total	Toplam / Total	1-4 Yerli / Local	1-4 İthal / Import	İthal Oran / Import %
2013	11.728	14.319	21.158	20.266	23.452	19.753	19.440	16.051	18.463	13.705	19.353	34.849	67.471	232.537	38.930	28.541	42,3
2014	10.383	10.492	13.500	14.344	16.068	17.017	16.168	18.172	21.502	18.928	24.673	44.789	48.719	226.036	27.366	21.353	43,8
2015	12.758	18.404	28.089	25.971	22.926	23.305	23.140	23.491	20.093	19.132	26.034	50.124	85.222	293.467	51.645	33.577	39,4
2016	11.011	14.252	21.957	22.130	23.258	23.555	14.166	19.677	18.073	21.920	29.679	37.662	69.350	257.340	37.906	31.444	45,3
2017	10.951	13.927	20.562	20.233	22.267	19.656	22.343	19.928	20.623	23.951	27.816	41.813	65.673	264.070	35.102	30.571	46,6
2018	9.914	12.867	19.802	18.778	17.769	11.563	12.170	8.161	6.320	5.512	13.202	19.171	61.361	155.229	32.525	28.836	47,0
2019	3.868	6.364	12.023	7.528	6.821	7.875	3.044	5.288	7.760	10.292	11.772	22.056	29.783	104.691	16.361	13.422	45,1
2020	6.107	11.221	11.667	5.340	8.235	15.722	19.992	19.198	22.110	20.784	18.467	27.198	34.335	186.041	20.048	14.287	41,6
2021	9.950	16.576	23.689	16.176	14.372	20.956	13.421	15.817	16.309	19.552	21.105	23.074	66.391	210.997	36.891	29.500	44,4
2022	10.721	14.389	18.068	17.020	16.471	20.654	14.393	17.067	21.623	21.632	27.277	35.188	60.198	234.503	37.107	23.091	38,4
2023	16.287	25.874	30.432	24.666									97.259	97.259	52.964	44.295	45,5



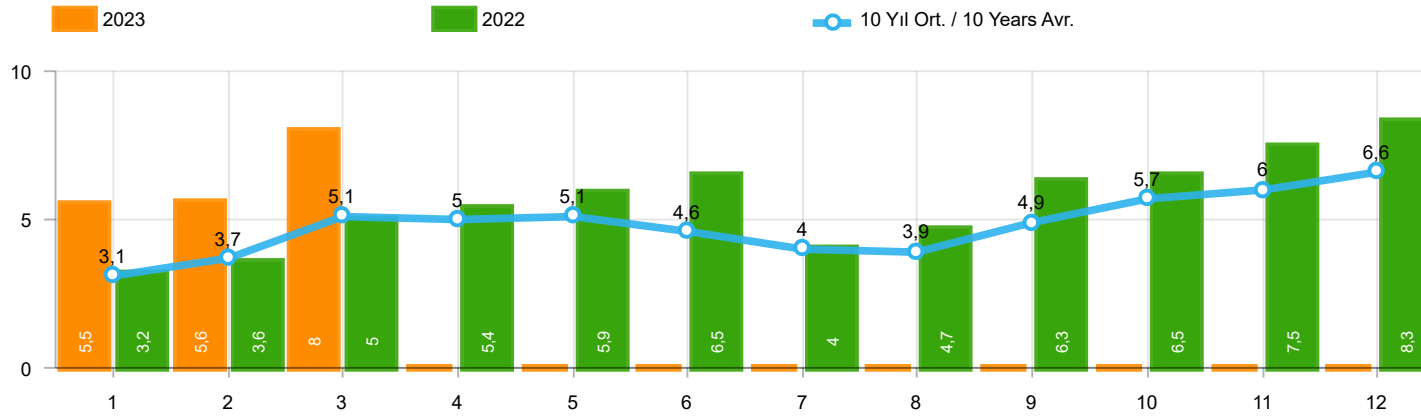
Aylar / Months	10 Yıl Ort. / 10 Years Avr.	2023	%
1	32.943	50.894	54,5
2	46.561	81.148	74,3
3	69.268	103.929	50,0
4	62.943	97.679	55,2
TOPLAM / TOTAL	211.715	333.650	57,6

Yıl / Year	1	2	3	4	5	6	7	8	9	10	11	12	1-4 Toplam / Total	Toplam / Total	1-4 Yerli / Local	1-4 İthal / Import	İthal Oran / Import %
2013	35.523	48.307	68.774	73.575	81.468	74.096	71.596	65.043	67.963	58.014	79.301	129.718	226.179	853.378	65.834	160.345	70,9
2014	32.670	35.021	47.581	53.305	58.121	60.163	59.907	60.199	66.531	66.573	80.621	146.989	168.577	767.681	50.531	118.046	70,0
2015	34.615	55.331	83.302	91.602	81.542	86.158	83.836	82.577	64.025	64.255	84.601	156.173	264.850	968.017	92.299	172.551	65,2
2016	32.713	52.825	82.948	84.887	93.904	91.540	58.533	71.556	67.593	83.000	122.309	141.912	253.373	983.720	83.208	170.165	67,2
2017	35.323	46.965	73.802	75.988	85.422	83.658	82.297	72.536	71.352	91.752	100.859	136.240	232.078	956.194	82.559	149.519	64,4
2018	35.076	47.009	76.345	71.126	72.755	51.037	52.734	34.346	23.028	21.571	58.204	77.706	229.556	620.937	85.456	144.100	62,8
2019	14.373	24.875	49.221	30.971	33.016	42.688	17.927	26.246	41.992	49.075	58.176	90.500	119.440	479.060	52.594	66.846	56,0
2020	27.273	47.122	50.008	26.457	32.235	70.973	87.401	61.533	90.619	94.733	80.141	104.293	150.860	772.788	59.054	91.806	60,9
2021	43.728	58.504	96.428	61.488	54.734	79.819	47.849	58.454	57.141	56.746	60.216	62.243	260.148	737.350	109.486	150.662	57,9
2022	38.131	49.652	64.267	60.035	65.167	80.652	52.206	48.336	62.084	65.222	82.311	115.220	212.085	783.283	90.693	121.392	57,2
2023	50.894	81.148	103.929	97.679									333.650	333.650	130.990	202.660	60,7



Aylar / Months	10 Yıl Ort / 10 Years Avr.	2023	%
1	8.169	13.606	66,6
2	11.034	22.241	101,6
3	15.697	24.703	57,4
4	14.055	20.281	44,3
TOPLAM / TOTAL	48.956	80.831	65,1

Yıl / Year	1	2	3	4	5	6	7	8	9	10	11	12	1-4 Toplam / Total	Toplam / Total	1-4 Yerli / Local	1-4 İthal / Import	İthal Oran / Import %
2013	9.688	11.493	16.989	16.576	19.085	15.806	15.884	13.432	15.038	11.029	15.184	28.519	54.746	188.723	29.032	25.714	47,0
2014	8.302	7.854	9.769	10.536	11.742	12.885	13.305	15.068	17.269	15.759	20.926	36.935	36.461	180.350	17.723	18.738	51,4
2015	10.117	14.514	21.626	21.391	18.664	18.392	19.618	20.824	16.937	16.301	22.204	41.833	67.648	242.421	38.084	29.564	43,7
2016	9.355	12.237	18.973	19.269	20.072	20.429	12.967	17.579	16.253	19.254	26.526	33.868	59.834	226.782	31.384	28.450	47,5
2017	9.634	12.307	18.186	17.990	19.623	17.494	19.913	17.646	17.929	21.264	24.903	36.546	58.117	233.435	29.353	28.764	49,5
2018	8.465	11.108	16.547	16.018	15.528	9.812	10.710	7.370	5.433	4.762	12.000	16.863	52.138	134.616	26.462	25.676	49,2
2019	3.394	5.670	10.593	6.555	5.890	6.664	2.529	4.702	6.684	9.079	10.373	19.671	26.212	91.804	13.977	12.235	46,7
2020	5.257	9.395	10.121	4.632	7.162	13.906	17.974	17.161	19.323	18.392	15.784	23.572	29.405	162.679	16.525	12.880	43,8
2021	8.370	13.755	20.071	13.113	11.596	17.471	11.538	13.698	13.733	16.234	17.234	18.684	55.309	175.497	29.752	25.557	46,2
2022	9.111	12.011	14.094	14.471	13.417	16.518	11.175	13.106	17.403	17.782	23.089	28.446	49.687	190.623	29.504	20.183	40,6
2023	13.606	22.241	24.703	20.281									80.831	80.831	41.742	39.089	48,4



Aylar / Months	10 Yıl Ort. / 10 Years Avr.	2023	%
1	3.083	5.533	79,5
2	3.701	5.569	50,5
3	5.145	7.959	54,7
TOPLAM / TOTAL	11.929	19.061	59,8

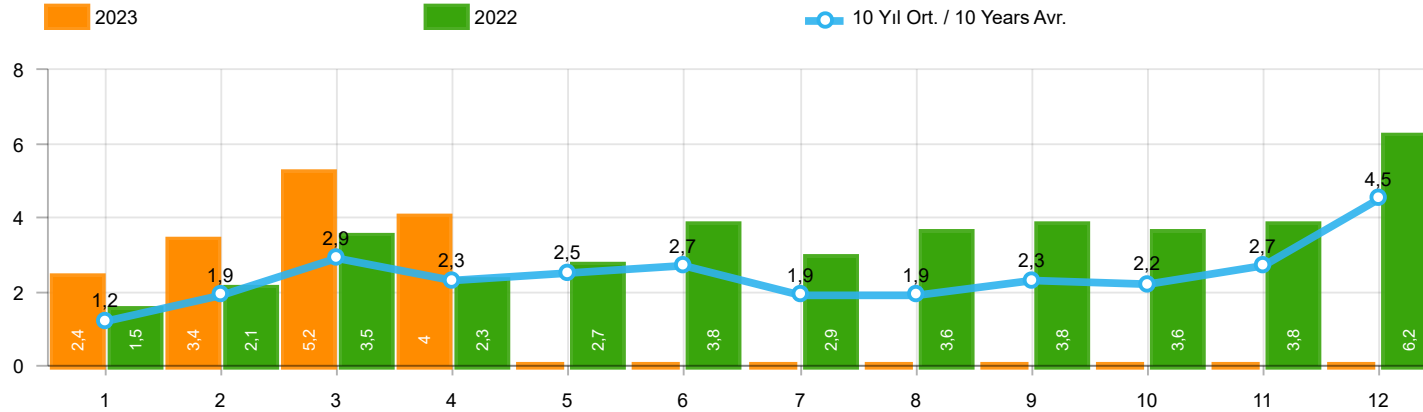
Yıl / Year	1	2	3	4	5	6	7	8	9	10	11	12	1-3 Toplam / Total	Toplam / Total
2013	2.161	2.432	4.005	4.585	5.616	3.136	4.574	3.408	4.935	4.762	5.781	6.891	8.598	52.286
2014	2.169	3.512	4.476	4.905	5.094	5.028	4.233	4.920	5.619	5.743	6.250	7.409	10.157	59.358
2015	3.124	3.984	5.460	6.383	6.078	5.748	4.677	5.044	4.765	7.049	6.898	7.564	12.568	66.774
2016	3.739	4.731	7.067	6.546	6.575	5.543	3.833	5.134	4.945	7.372	7.090	7.603	15.537	70.178
2017	3.974	4.964	6.773	6.780	7.057	5.356	5.003	4.396	6.064	7.734	7.457	7.351	15.711	72.909
2018	4.362	4.179	5.925	5.216	4.584	3.146	3.654	2.587	3.541	3.698	3.578	3.886	14.466	48.356
2019	1.311	1.401	2.143	2.126	2.229	1.538	2.039	1.579	2.284	2.828	3.037	3.782	4.855	26.297
2020	2.425	2.778	3.771	2.606	3.244	4.173	3.727	3.974	4.928	5.466	5.831	6.221	8.974	49.144
2021	4.411	5.395	6.845	5.581	4.200	5.571	3.846	3.093	6.100	5.351	6.901	6.776	16.651	64.070
2022	3.152	3.636	4.988	5.408	5.873	6.520	3.985	4.740	6.265	6.542	7.514	8.319	11.776	66.942
2023	5.533	5.569	7.959	-									19.061	19.061

Kaynak: TÜİK trafik kayıtları.

Rakamlar, son iki model yılına ait traktör tescillerinden oluşmaktadır.

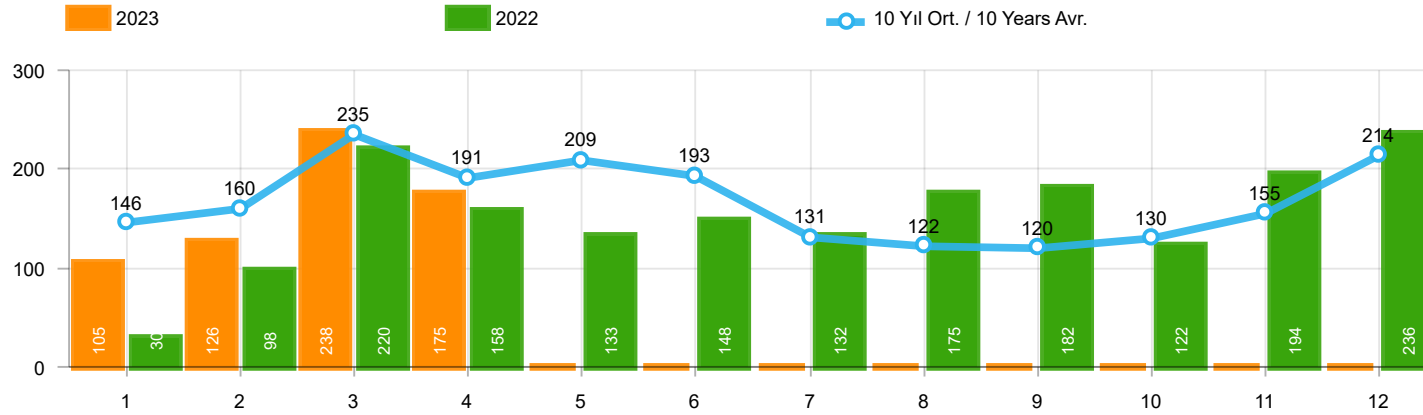
Source: Turkish Statistical Institute – Traffic registrations

Data represents the last two model year's farm tractors registration figures



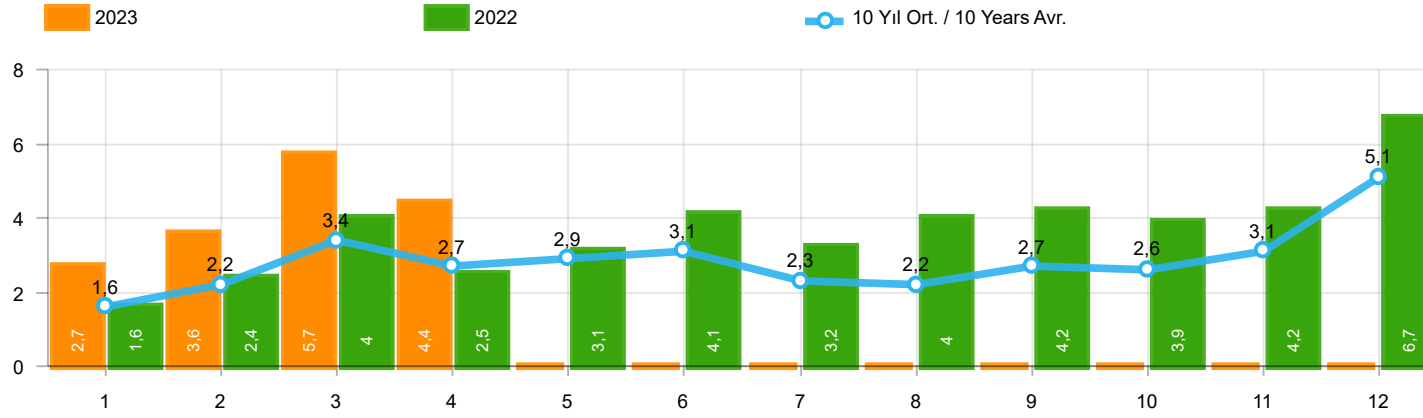
Aylar / Months	10 Yıl Ort / 10 Years Avr.	2023	%
1	1.244	2.406	93,3
2	1.885	3.356	78,0
3	2.865	5.162	80,2
4	2.293	3.972	73,2
TOPLAM / TOTAL	8.287	14.896	79,8

Yıl / Year	1	2	3	4	5	6	7	8	9	10	11	12	1-4 Toplam / Total	Toplam / Total	1-4 Yerli / Local	1-4 İthal / Import	İthal Oran / Import %
2013	1.484	2.113	3.343	2.925	3.504	3.186	2.777	2.103	2.875	2.086	3.631	5.444	9.865	35.471	7.044	2.821	28,6
2014	1.522	2.065	3.094	3.224	3.727	3.726	2.578	2.783	3.708	2.858	3.384	6.869	9.905	39.538	7.410	2.495	25,2
2015	2.215	3.346	5.699	3.729	3.600	4.253	2.922	2.211	2.687	2.266	3.146	7.307	14.989	43.381	11.013	3.976	26,5
2016	1.167	1.648	2.515	2.319	2.711	2.623	984	1.796	1.438	2.238	2.485	3.127	7.649	25.051	4.656	2.993	39,1
2017	931	1.290	1.982	1.888	2.184	1.891	1.974	1.860	2.284	2.188	2.487	4.438	6.091	25.397	4.294	1.797	29,5
2018	1.237	1.552	2.630	2.328	1.909	1.272	1.235	603	653	488	905	1.695	7.747	16.507	4.598	3.149	40,6
2019	342	579	1.255	842	728	981	435	497	854	1.047	1.100	2.087	3.018	10.747	1.831	1.187	39,3
2020	682	1.475	1.290	628	921	1.570	1.809	1.835	2.660	2.239	2.537	3.358	4.075	21.004	2.668	1.407	34,5
2021	1.366	2.633	3.319	2.788	2.617	3.238	1.799	1.942	2.377	3.067	3.549	4.045	10.106	32.740	6.163	3.943	39,0
2022	1.498	2.148	3.520	2.260	2.701	3.764	2.939	3.617	3.811	3.574	3.777	6.214	9.426	39.823	6.518	2.908	30,9
2023	2.406	3.356	5.162	3.972									14.896	14.896	9.690	5.206	34,9



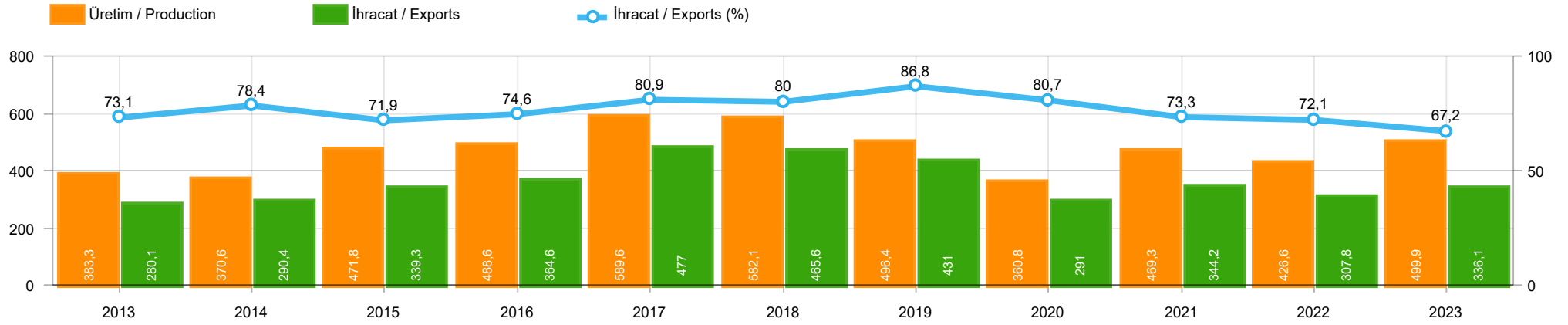
Aylar / Months	10 Yıl Ort / 10 Years Avr.	2023	%
1	146	105	-27,8
2	160	126	-21,3
3	235	238	1,5
4	191	175	-8,3
TOPLAM / TOTAL	731	644	-11,9

Yıl / Year	1	2	3	4	5	6	7	8	9	10	11	12	1-4 Toplam / Total	Toplam / Total	1-4 Yerli / Local	1-4 İthal / Import	İthal Oran / Import %
2013	365	445	537	489	580	520	412	281	245	198	123	189	1.836	4.384	1.830	6	0,3
2014	199	179	253	251	305	148	69	92	130	91	97	332	882	2.146	762	120	13,6
2015	146	222	313	290	290	255	211	203	153	171	359	363	971	2.976	934	37	3,8
2016	180	209	218	240	214	307	76	82	141	198	314	236	847	2.415	846	1	0,1
2017	174	119	167	124	188	115	206	187	92	231	109	235	584	1.947	574	10	1,7
2018	78	65	215	136	125	164	45	42	74	107	113	188	494	1.352	483	11	2,2
2019	75	54	112	35	97	41	25	45	84	28	42	54	276	692	276	-	-
2020	64	130	128	45	55	112	98	79	50	82	64	131	367	1.038	367	-	-
2021	144	80	182	140	101	116	40	38	46	73	134	173	546	1.267	546	-	-
2022	30	98	220	158	133	148	132	175	182	122	194	236	506	1.828	506	-	-
2023	105	126	238	175									644	644	644	-	-



Aylar / Months	10 Yıl Ort / 10 Years Avr.	2023	%
1	1.570	2.681	70,8
2	2.247	3.633	61,7
3	3.355	5.729	70,8
4	2.724	4.385	61,0
TOPLAM / TOTAL	9.895	16.428	66,0

Yıl / Year	1	2	3	4	5	6	7	8	9	10	11	12	1-4 Toplam / Total	Toplam / Total	1-4 Yerli / Local	1-4 İthal / Import	İthal Oran / Import %
2013	2.040	2.826	4.169	3.690	4.367	3.947	3.556	2.619	3.425	2.676	4.169	6.330	12.725	43.814	9.898	2.827	22,2
2014	2.081	2.638	3.731	3.808	4.326	4.132	2.863	3.104	4.233	3.169	3.747	7.854	12.258	45.686	9.643	2.615	21,3
2015	2.641	3.890	6.463	4.580	4.262	4.913	3.522	2.667	3.156	2.831	3.830	8.291	17.574	51.046	13.561	4.013	22,8
2016	1.656	2.015	2.984	2.861	3.186	3.126	1.199	2.098	1.820	2.666	3.153	3.794	9.516	30.558	6.522	2.994	31,5
2017	1.317	1.620	2.376	2.243	2.644	2.162	2.430	2.282	2.694	2.687	2.913	5.267	7.556	30.635	5.749	1.807	23,9
2018	1.449	1.759	3.255	2.760	2.241	1.751	1.460	791	887	750	1.202	2.308	9.223	20.613	6.063	3.160	34,3
2019	474	694	1.430	973	931	1.211	515	586	1.076	1.213	1.399	2.385	3.571	12.887	2.384	1.187	33,2
2020	850	1.826	1.546	708	1.073	1.816	2.018	2.037	2.787	2.392	2.683	3.626	4.930	23.362	3.523	1.407	28,5
2021	1.580	2.821	3.618	3.063	2.776	3.485	1.883	2.119	2.576	3.318	3.871	4.390	11.082	35.500	7.139	3.943	35,6
2022	1.610	2.378	3.974	2.549	3.054	4.136	3.218	3.961	4.220	3.850	4.188	6.742	10.511	43.880	7.603	2.908	27,7
2023	2.681	3.633	5.729	4.385									16.428	16.428	11.222	5.206	31,7



	2013	2014	2015	2016	2017	2018	2019	2020	2021	2022	2023
İhracat/Export	280.102	290.418	339.348	364.571	477.020	465.649	431.008	290.988	344.184	307.778	336.150
Üretim/Production	383.336	370.581	471.824	488.575	589.602	582.097	496.365	360.759	469.252	426.628	499.927
İhracat/Exports (%)	73,1	78,4	71,9	74,6	80,9	80	86,8	80,7	73,3	72,1	67,2

Taşıt Araçları İhracatı (2021 - 2023)
Motor Vehicle Exports (2021 - 2023)

SEKTÖR / SECTOR	2021	2022	1/4-2022	1/4-2023	2023/2022 %
OTOMOBİL / Pass.Car	565.370	571.218	167.795	205.398	22,4
OTOMOBİL TOPLAM / Pass. Car Total	565.370	571.218	167.795	205.398	22,4
KAMYON / Truck	17.293	20.123	7.007	6.108	-12,8
KAMYONET / Pick Up	310.874	335.148	113.290	100.446	-11,3
OTOBÜS / Bus	4.750	6.579	1.247	2.526	102,6
MINİBÜS / Minibus	37.741	36.016	12.166	14.358	18,0
MİDİBÜS / Midibus	987	1.040	217	404	86,2
TİCARİ ARAÇLAR TOPLAM / Commercial Vehicle Total	371.645	398.906	133.927	123.842	-7,5
TAŞIT ARAÇLARI TOPLAM / Motor Vehicles Total	937.015	970.124	301.722	329.240	9,1
TRAKTÖR / F.Tractor	17.038	18.154	6.056	6.910	14,1
TRAKTÖR TOPLAM / F.Tractor Total	17.038	18.154	6.056	6.910	14,1
GENEL TOPLAM / GRAND TOTAL	954.053	988.278	307.778	336.150	9,2

Üretici Bazında İhracat (adet)
Exports by Manufacturer (unit)

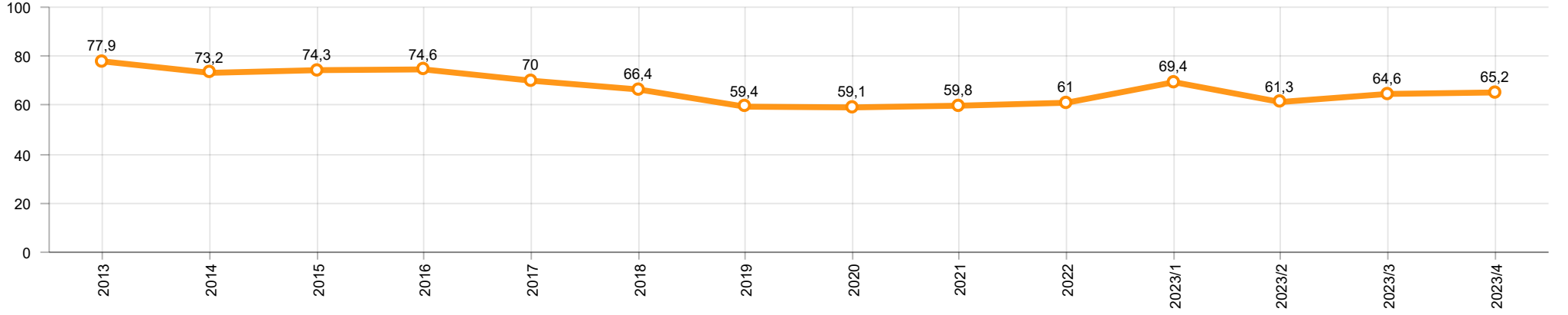
Üreticiler / Manufacturers	2021	2022	1-4 / 2022	1-4 / 2023
A.I.O.S.	1.100	911	172	300
FORD OTOSAN	287.609	297.828	101.571	107.852
HATTAT TRAKTÖR	862	1.059	478	251
HYUNDAI ASSAN	138.739	176.664	57.617	71.276
KARSAN	2.135	301	45	71
M. BENZ TÜRK	13.911	15.674	5.314	4.839
MAN TÜRKİYE	1.573	1.786	369	705
OTOKAR	749	1.506	216	537
OYAK RENAULT	187.923	176.844	29.977	62.986
TEMSA	599	587	106	234
TOFAŞ	112.465	121.477	36.529	17.582
TOYOTA	187.907	176.546	69.806	62.858
TÜRK TRAKTÖR	16.176	17.095	5.578	6.659
GENEL TOPLAM / Grand Total	951.748	988.278	307.778	336.150

Otomotiv Ana ve Yan Sanayii İhracatı (ABD \$)
CBU and CKD Exports - \$

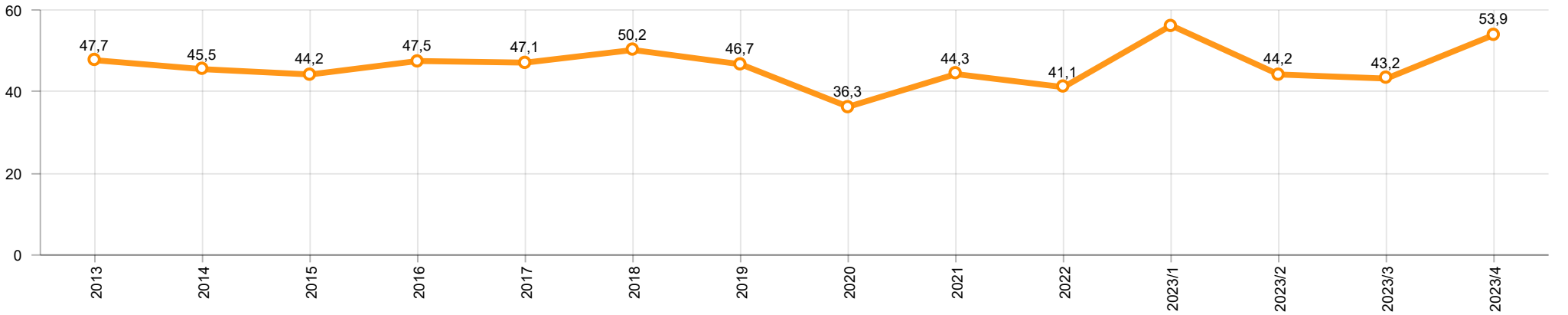
Sektör / Sector	2021	2022	OCAK - NİSAN / January - April 2022	OCAK - NİSAN / January - April 2023	2023 / 2022 %
Toplam Yan Sanayi / Total Component Industry	11.824.049.653,01	12.831.129.592,62	4.347.800.899,64	4.687.019.682,84	7,8
İç ve Dış Lastik / Tyres	1.630.367.018,49	1.767.320.167	607.006.609,41	612.567.690,28	0,9
Emniyet Camı / Safety Glasses	203.192.140,55	234.466.834,44	81.538.995,57	84.982.826,31	4,2
Motor / Engine	296.695.616,13	233.029.231,53	98.808.393,5	75.334.144,91	-23,8
Akümülatör / Batteries	509.199.445,03	547.895.439,61	181.489.073,69	154.178.753,69	-15,0
Diğer Aksam ve Parça / Spare Parts&Components	9.184.595.432,81	10.048.417.920,04	3.378.957.827,47	3.759.956.267,65	11,3
Toplam Ana Sanayi / Total Vehicle Industry	18.048.636.689,96	18.677.239.435,86	5.977.054.013,7	6.897.994.857,7	15,4
Otobüs / Bus	1.014.817.251,08	1.201.795.118,6	252.411.075,18	457.914.065,91	81,4
Midibüs-Minibüs / Midibus-Minibus	193.913.261,22	163.044.669,04	74.555.085,99	86.936.123,68	16,6
Otomobil / P.Cars	9.272.072.907,39	9.069.547.725,1	2.872.765.595,22	3.455.567.796,32	20,3
Kamyon-Kamyonet / Truck-Pick Up&Van	5.420.090.951,32	5.633.803.021,79	1.953.858.013,3	1.997.953.507,17	2,3
Römork ve Yarı Römork / Trailer-Semi Trailer	609.758.049,6	763.209.294,39	232.009.077,7	255.832.852,08	10,3
Çekici / Tractor	1.018.262.590,07	1.266.205.170,15	419.741.043,89	425.914.033,78	1,5
Tarım Traktörü / Farm Tractor	519.721.679,28	579.634.436,79	171.714.122,42	217.876.478,76	26,9
Toplam / Total	29.872.686.342,97	31.508.369.028,48	10.324.854.913,34	11.585.014.540,54	12,2

Kaynak: Uludağ İhracatçı Birlikleri . ÜİB tarafından OSD için özel olarak analiz edilen Otomotiv İhracatı kapsamında; ÜİB Türkiye Geneli Otomotiv Endüstrisi sınıflandırmasına kıyasla “Römork ve Yarı Römork” , “Tarım Traktörü” verileri dahil edilmekte; “Kullanılmış Araçlar” ,”İki Tekerlekli Taşıtlar” , “Demiryolu Taşıtları” hariç tutulmaktadır.

Otomobil Pazarında İthalatın Payı (%)
Import Share in P.Car Market (%)



Hafif Ticari Araçlar Pazarında İthalatın Payı (%)
Import Share in LCV Market (%)



Araç Tipleri / Vehicle Types	1	2	3	4	5	6	7	8	9	10	11	12	Toplam / Total
OTOMOBİL - Pass.Car	51.122	46.473	59.168	48.635									205.398
KAMYON - H. Truck	1.294	1.789	1.757	1.222									6.062
K.KAMYON - L. Truck	25	18	2	1									46
KAMYONET - Pick Up	23.167	26.083	29.741	21.455									100.446
OTOBÜS - Bus	479	584	754	709									2.526
MİNİBÜS - Minibus	3.212	3.734	4.144	3.268									14.358
MİDİBÜS - Midibus	82	82	118	122									404
TİCARİ ARAÇLAR TOPLAMI - CV Total	28.259	32.290	36.516	26.777									123.842
TAŞIT ARAÇLARI TOPLAMI - MV Total	79.381	78.763	95.684	75.412									329.240
TRAKTÖR - F.Tractor	1.718	1.698	1.813	1.681									6.910
GENEL TOPLAM - Grand Total	81.099	80.461	97.497	77.093									336.150

Otomobil / P.Car

Firmalar / Firms	1	2	3	4	5	6	7	8	9	10	11	12	Toplam / Total
FORD OTOSAN	-	-	-	-	-	-	-	-	-	-	-	-	-
HYUNDAI ASSAN	20.026	16.310	18.880	16.060	-	-	-	-	-	-	-	-	71.276
OYAK RENAULT	9.728	18.194	20.350	14.714	-	-	-	-	-	-	-	-	62.986
TOFAŞ	507	1.646	2.954	3.171	-	-	-	-	-	-	-	-	8.278
TOYOTA	20.861	10.323	16.984	14.690	-	-	-	-	-	-	-	-	62.858
TOPLAM - Total	51.122	46.473	59.168	48.635	-	-	-	-	-	-	-	-	205.398

Kamyonet / Pick-up

Firmalar / Firms	1	2	3	4	5	6	7	8	9	10	11	12	Toplam / Total
A.I.O.S.	-	-	-	-	-	-	-	-	-	-	-	-	-
FORD OTOSAN	20.603	23.319	26.833	20.387	-	-	-	-	-	-	-	-	91.142
KARSAN	-	-	-	-	-	-	-	-	-	-	-	-	-
OTOKAR	-	-	-	-	-	-	-	-	-	-	-	-	-
TOFAŞ	2.564	2.764	2.908	1.068	-	-	-	-	-	-	-	-	9.304
TOPLAM - Total	23.167	26.083	29.741	21.455	-	-	-	-	-	-	-	-	100.446

Minibüs / Minibus

Firmalar / Firms	1	2	3	4	5	6	7	8	9	10	11	12	Toplam / Total
FORD OTOSAN	3.212	3.734	4.138	3.268	-	-	-	-	-	-	-	-	14.352
KARSAN	-	-	6	-	-	-	-	-	-	-	-	-	6
TOPLAM - Total	3.212	3.734	4.144	3.268	-	-	-	-	-	-	-	-	14.358

Kamyon / Truck

Firmalar / Firms	1	2	3	4	5	6	7	8	9	10	11	12	Toplam / Total
A.I.O.S.	24	18	2	-	-	-	-	-	-	-	-	-	44
FORD OTOSAN	459	619	732	548	-	-	-	-	-	-	-	-	2.358
KARSAN	-	-	-	-	-	-	-	-	-	-	-	-	-
M. BENZ TÜRK	835	1.170	1.025	674	-	-	-	-	-	-	-	-	3.704
OTOKAR	1	-	-	1	-	-	-	-	-	-	-	-	2
TEMSA	-	-	-	-	-	-	-	-	-	-	-	-	-
TOPLAM - Total	1.319	1.807	1.759	1.223	-	-	-	-	-	-	-	-	6.108

Midibüs / Midibus

Firmalar / Firms	1	2	3	4	5	6	7	8	9	10	11	12	Toplam / Total
A.I.O.S.	39	35	54	28	-	-	-	-	-	-	-	-	156
KARSAN	-	24	19	2	-	-	-	-	-	-	-	-	45
OTOKAR	39	12	11	67	-	-	-	-	-	-	-	-	129
TEMSA	4	11	34	25	-	-	-	-	-	-	-	-	74
TOPLAM - Total	82	82	118	122	-	-	-	-	-	-	-	-	404

Otobüs / Bus

Firmalar / Firms	1	2	3	4	5	6	7	8	9	10	11	12	Toplam / Total
A.I.O.S.	11	21	42	26	-	-	-	-	-	-	-	-	100
KARSAN	-	2	18	-	-	-	-	-	-	-	-	-	20
M. BENZ TÜRK	285	278	320	252	-	-	-	-	-	-	-	-	1.135
MAN TÜRKİYE	86	133	218	268	-	-	-	-	-	-	-	-	705
OTOKAR	83	137	96	90	-	-	-	-	-	-	-	-	406
TEMSA	14	13	60	73	-	-	-	-	-	-	-	-	160
TOPLAM - Total	479	584	754	709	-	-	-	-	-	-	-	-	2.526

Traktör / F.Tractor

Firmalar / Firms	1	2	3	4	5	6	7	8	9	10	11	12	Toplam / Total
HATTAT TRAKTÖR	80	44	47	80	-	-	-	-	-	-	-	-	251
TÜRK TRAKTÖR	1.638	1.654	1.766	1.601	-	-	-	-	-	-	-	-	6.659
TOPLAM - Total	1.718	1.698	1.813	1.681	-	-	-	-	-	-	-	-	6.910

Firmalar / Firms	2022 Toplam / Total	1	2	3	4	5	6	7	8	9	10	11	12	Toplam / Total
Alfa Romeo	820	138	235	204	131	-	-	-	-	-	-	-	-	708
Aston Martin	28	3	-	2	1	-	-	-	-	-	-	-	-	6
Audi	14.554	848	1.662	2.457	2.044	-	-	-	-	-	-	-	-	7.011
Bentley	15	3	2	5	-	-	-	-	-	-	-	-	-	10
BMW	18.056	580	1.692	2.645	2.123	-	-	-	-	-	-	-	-	7.040
Chery	-	-	-	629	1.401	-	-	-	-	-	-	-	-	2.030
Citroen	21.913	1.412	2.198	3.305	2.816	-	-	-	-	-	-	-	-	9.731
CUPRA	2.792	112	161	1.084	715	-	-	-	-	-	-	-	-	2.072
Dacia	36.000	5.074	3.312	3.716	3.884	-	-	-	-	-	-	-	-	15.986
DFSK	352	48	69	109	12	-	-	-	-	-	-	-	-	238
DS	1.829	106	287	324	434	-	-	-	-	-	-	-	-	1.151
Ferrari	22	-	-	5	3	-	-	-	-	-	-	-	-	8
Fiat	276	23	7	220	54	-	-	-	-	-	-	-	-	304
Ford	8.421	558	1.510	2.639	2.610	-	-	-	-	-	-	-	-	7.317
Honda	21.429	1.196	1.355	1.681	1.380	-	-	-	-	-	-	-	-	5.612
Hyundai	14.198	804	656	906	1.221	-	-	-	-	-	-	-	-	3.587
Jaguar	90	1	4	16	9	-	-	-	-	-	-	-	-	30
Jeep	2.422	150	160	158	346	-	-	-	-	-	-	-	-	814
Kia	18.462	733	1.439	1.737	1.667	-	-	-	-	-	-	-	-	5.576
Lamborghini	14	-	1	2	2	-	-	-	-	-	-	-	-	5
Land Rover	1.111	185	126	192	154	-	-	-	-	-	-	-	-	657
LEAPMOTOR	-	-	-	-	80	-	-	-	-	-	-	-	-	80
Lexus	336	15	5	29	86	-	-	-	-	-	-	-	-	135
Maserati	314	7	14	85	83	-	-	-	-	-	-	-	-	189
Mazda	181	10	16	20	17	-	-	-	-	-	-	-	-	63
Mercedes-Benz	18.661	573	950	1.448	2.860	-	-	-	-	-	-	-	-	5.831
MG	1.627	420	403	570	641	-	-	-	-	-	-	-	-	2.034
Mini	1.385	61	109	262	71	-	-	-	-	-	-	-	-	503
Mitsubishi	583	2	35	30	31	-	-	-	-	-	-	-	-	98
Nissan	9.337	728	750	607	2.762	-	-	-	-	-	-	-	-	4.847
Opel	30.378	1.476	3.519	4.706	5.107	-	-	-	-	-	-	-	-	14.808
Peugeot	23.345	1.628	5.065	6.874	4.659	-	-	-	-	-	-	-	-	18.226
Porsche	668	184	98	95	50	-	-	-	-	-	-	-	-	427
Renault	17.713	1.057	1.618	455	851	-	-	-	-	-	-	-	-	3.981
Seat	6.142	368	395	1.030	992	-	-	-	-	-	-	-	-	2.785
Skoda	19.464	2.740	2.971	4.234	2.846	-	-	-	-	-	-	-	-	12.791
SKYWELL	-	-	90	95	127	-	-	-	-	-	-	-	-	312
Ssangyong	804	17	-	-	65	-	-	-	-	-	-	-	-	82
Subaru	622	72	113	125	72	-	-	-	-	-	-	-	-	382
Suzuki	3.601	137	636	170	244	-	-	-	-	-	-	-	-	1.187
Toyota	5.767	1.003	475	954	485	-	-	-	-	-	-	-	-	2.917
Volkswagen	49.695	3.049	3.235	6.176	6.326	-	-	-	-	-	-	-	-	18.786
Volvo	8.228	368	732	1.150	964	-	-	-	-	-	-	-	-	3.214
GENEL TOPLAM - Grand Total	361.655	25.889	36.105	51.151	50.426	-	-	-	-	-	-	-	-	163.571

Firmalar / Firms	2022 Toplam / Total	1	2	3	4	5	6	7	8	9	10	11	12	Toplam / Total
Citroen	6.918	957	1.360	2.043	1.397	-	-	-	-	-	-	-	-	5.757
Fiat	2.561	165	487	150	822	-	-	-	-	-	-	-	-	1.624
Ford	1.323	111	58	141	32	-	-	-	-	-	-	-	-	342
Hyundai	2.935	248	188	513	555	-	-	-	-	-	-	-	-	1.504
Isuzu	1.317	64	91	99	218	-	-	-	-	-	-	-	-	472
Iveco	2.966	80	177	94	311	-	-	-	-	-	-	-	-	662
Kia	1.905	-	117	188	94	-	-	-	-	-	-	-	-	399
Land Rover	419	2	83	19	-	-	-	-	-	-	-	-	-	104
Mercedes-Benz	6.327	598	653	649	963	-	-	-	-	-	-	-	-	2.863
Mitsubishi	1.437	93	69	-	-	-	-	-	-	-	-	-	-	162
Opel	6.347	408	1.202	1.104	1.416	-	-	-	-	-	-	-	-	4.130
Peugeot	9.321	1.157	1.487	1.983	1.650	-	-	-	-	-	-	-	-	6.277
Renault	11.433	551	1.557	1.273	1.476	-	-	-	-	-	-	-	-	4.857
Ssangyong	489	114	69	77	122	-	-	-	-	-	-	-	-	382
Toyota	11.661	1.067	776	806	883	-	-	-	-	-	-	-	-	3.532
Volkswagen	10.646	2.027	1.466	1.527	1.002	-	-	-	-	-	-	-	-	6.022
GENEL TOPLAM - Grand Total	78.400	7.642	9.840	10.666	10.941	-	-	-	-	-	-	-	-	39.089

