



OTOMOTİV SANAYİİ DERNEĐİ
AUTOMOTIVE MANUFACTURERS ASSOCIATION

OTOMOTİV SEKTÖRÜ AYLIK DEĐERLENDİRME RAPORU MAYIS 2023

AUTOMOTIVE INDUSTRY MONTHLY REPORT
May 2023

OSD "OICA" Üyesidir © O I C A OSD is a Member of "OICA"

	5 - 2022	5 - 2023	%	1 - 5 / 2022	1 - 5 / 2023	%	6/2021 - 5/2022	6/2022 - 5/2023	%
Otomobil Üretimi/P.Cars Production	67.162	90.739	35,1	296.362	386.427	30,4	725.617	900.954	24,2
Toplam Üretim/Total Production	103.984	137.012	31,8	513.898	616.342	19,9	1.257.596	1.455.092	15,7
Otomobil Pazar/P.Cars Market	51.750	87.218	68,5	214.148	340.037	58,8	528.024	718.549	36,1
Toplam Pazar/Total Market	68.221	116.152	70,3	290.817	466.379	60,4	734.927	1.002.725	36,4
Otomobil İthalat/P.Cars Import	33.442	59.534	78,0	134.651	223.105	65,7	320.679	450.109	40,4
Toplam İthalat/Total Import	40.049	74.329	85,6	164.349	282.343	71,8	403.539	572.153	41,8
Otomobil İhracat/P.Cars Export	48.097	58.456	21,5	215.892	263.854	22,2	524.641	619.180	18,0
Toplam İhracat/Total Export	78.663	86.019	9,4	380.385	415.276	9,2	926.351	1.005.015	8,5
Otomobil İhracat(\$)/P.Cars Export (\$)	744.431.855,76	947.685.210,15	27,3	3.617.197.451	4.403.253.006	21,7	8.663.137.403	9.855.601.492	13,8
Toplam İhracat(\$)/Total Export (\$)*	2.329.368.815,13	3.085.351.160,44	32,5	12.654.217.098	14.660.461.695	15,9	30.235.173.485	33.507.078.220	10,8

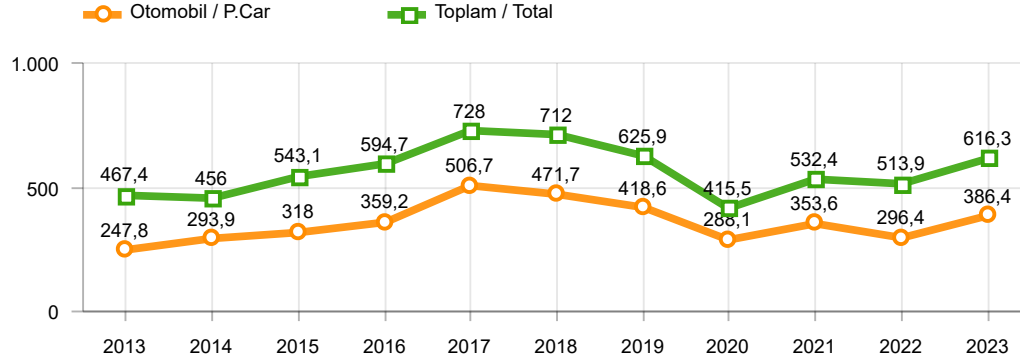
Parametreler/Parameters	5 - 2022	5 - 2023	%	1 - 5 / 2022	1 - 5 / 2023	%	6/2021 - 5/2022	6/2022 - 5/2023	%
ÜFE / PPI	8,8	0,7	-	51,4	7,8	-	80,4	95,8	-
TÜFE / CPI	3,0	0,0	-	35,6	15,3	-	39,3	63,7	-
Sanayi Endeksi / Industry Index	5,5	1,3	-	43,5	14,3	-	76,4	82,0	-
Dolar \$ ** (1 birim)	15,6	19,7	26,0	14,4	19,1	32,7	11,6	18,5	59,2
Euro € ** (1 birim)	16,5	21,4	29,6	15,8	20,6	30,2	13,1	19,3	47,2
Japon Yeni ¥ ** (100 birim)	12,1	14,3	18,6	11,9	14,2	20,0	9,9	13,5	35,6

*Toplam Sanayi / Total Industry Including Components

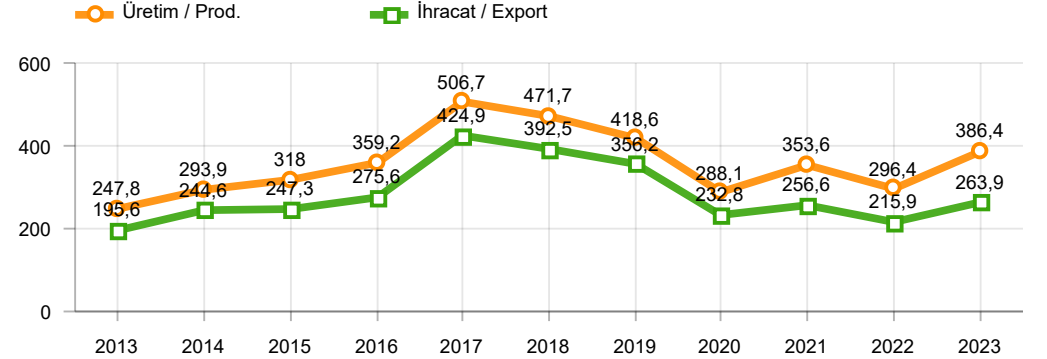
** Ortalama Değerler / Average Values

Araç Tipleri / Types	5 / 2022	5 / 2023	5 % Değişim	1-5 / 2022	1-5 / 2023	1-5 % Değişim
OTOMOBİL / Pass.Car	67.162	90.739	35,1	296.362	386.427	30,4
OTOMOBİL Toplam / Pass.Car Total	67.162	90.739	35,1	296.362	386.427	30,4
B.KAMYON / H. Truck	2.536	4.639	82,9	16.203	20.056	23,8
K.KAMYON / L. Truck	322	518	60,9	1.966	2.015	2,5
KAMYONET / Pick Up	30.073	34.653	15,2	175.111	177.793	1,5
OTOBÜS / Bus	613	957	56,1	2.418	3.881	60,5
MINİBÜS / Minibus	2.983	5.084	70,4	20.693	24.320	17,5
MİDİBÜS / Midibus	295	422	43,1	1.145	1.850	61,6
TİCARİ ARAÇLAR Toplam / Commercial Vehicles Total	36.822	46.273	25,7	217.536	229.915	5,7
TAŞIT ARAÇLARI Toplam / Motor Vehicles Total	103.984	137.012	31,8	513.898	616.342	19,9
TRAKTÖR / F.Tractor	3.486	5.143	47,5	20.200	25.740	27,4
TRAKTÖR Toplam / F.Tractor Total	3.486	5.143	47,5	20.200	25.740	27,4
GENEL TOPLAM / Grand Total	107.470	142.155	32,3	534.098	642.082	20,2

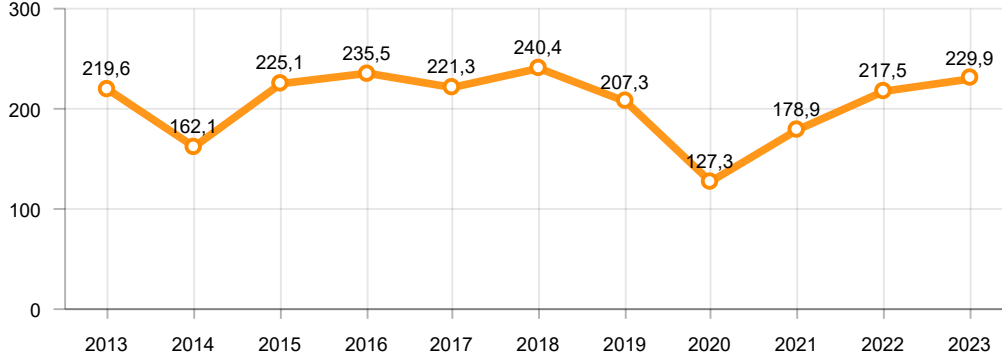
Toplam Üretim ve Otomobil Üretimi (x1000)(OCAK - MAYIS)
Total & P.Cars Production (x1000)(January - May)



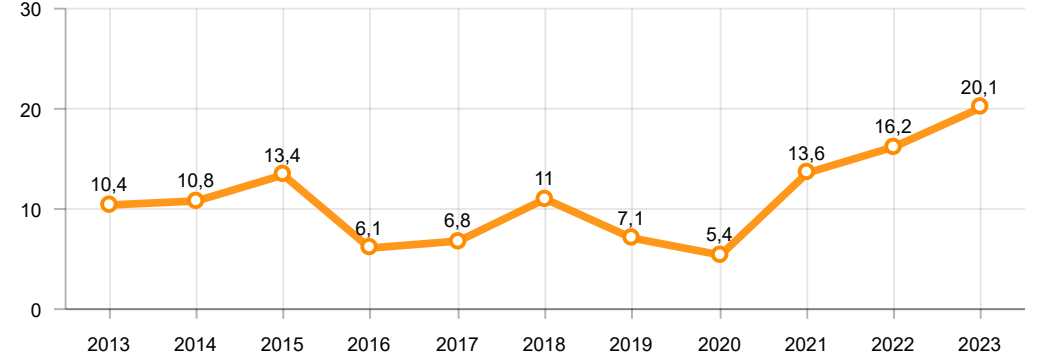
Otomobil Üretimi ve İhracat (x1000)(OCAK - MAYIS)
P.Cars Production & Exports (x1000)(January - May)



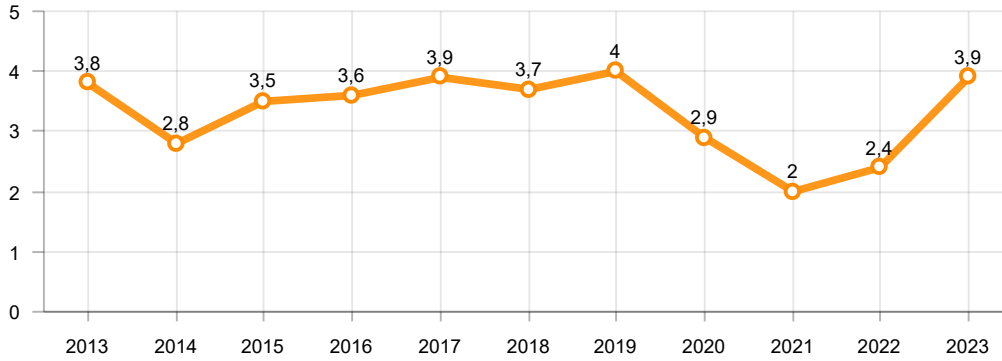
Ticari Araç Üretimi (x1000)(OCAK - MAYIS)
Commercial Vehicle Production (x1000)(January - May)



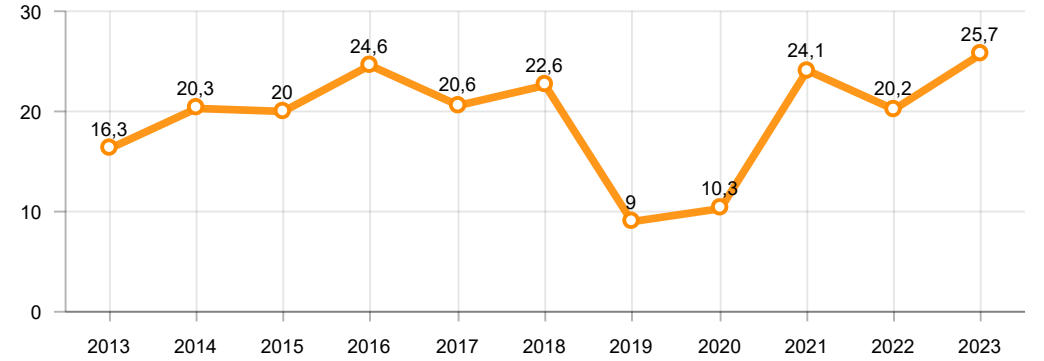
Büyük Kamyon Üretimi (x1000)(OCAK - MAYIS)
Heavy Truck Production (x1000)(January - May)

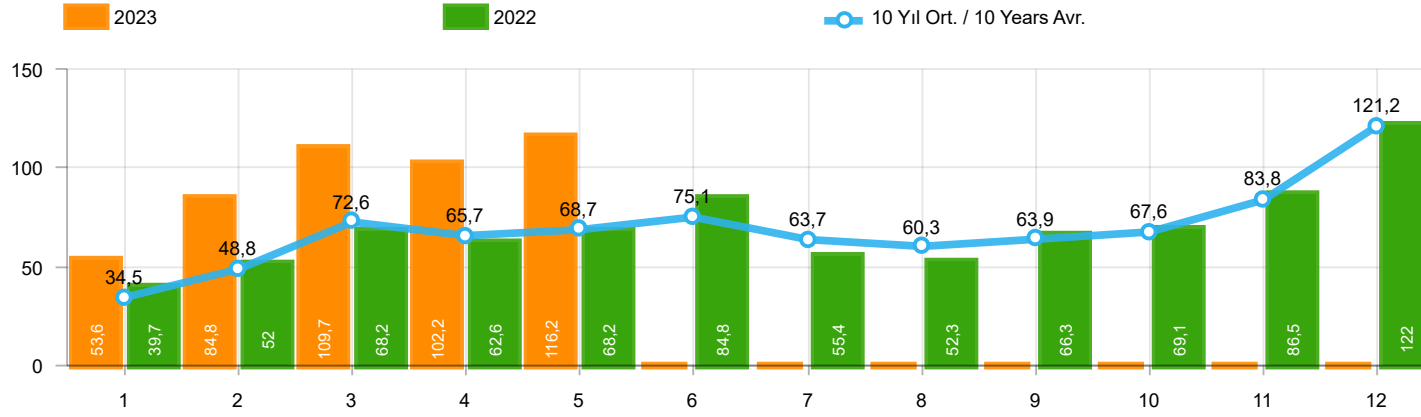


Otobüs Üretimi (x1000)(OCAK - MAYIS)
Bus Production (x1000)(January - May)



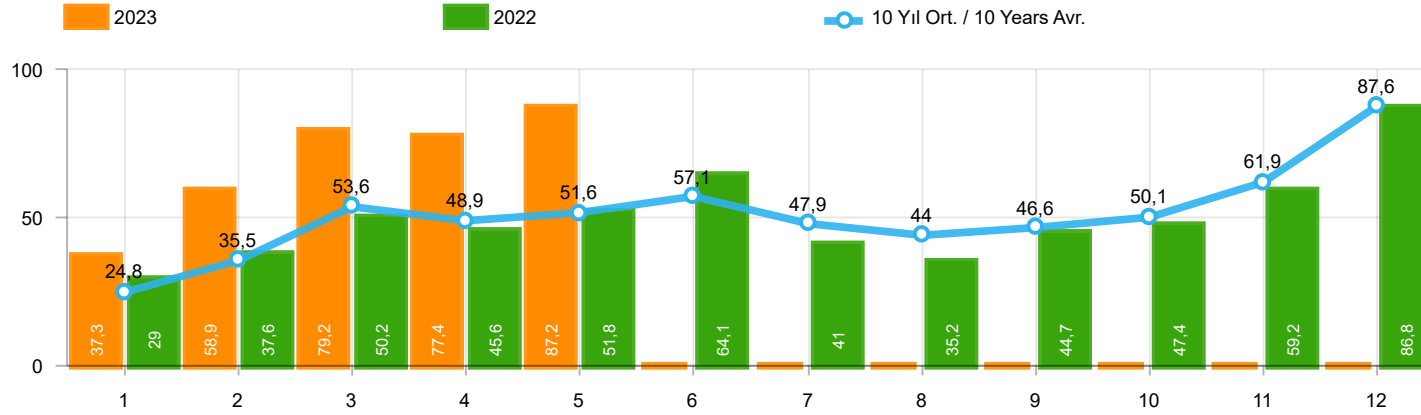
Traktör Üretimi (x1000)(OCAK - MAYIS)
F. Tractor Production (x1000)(January - May)





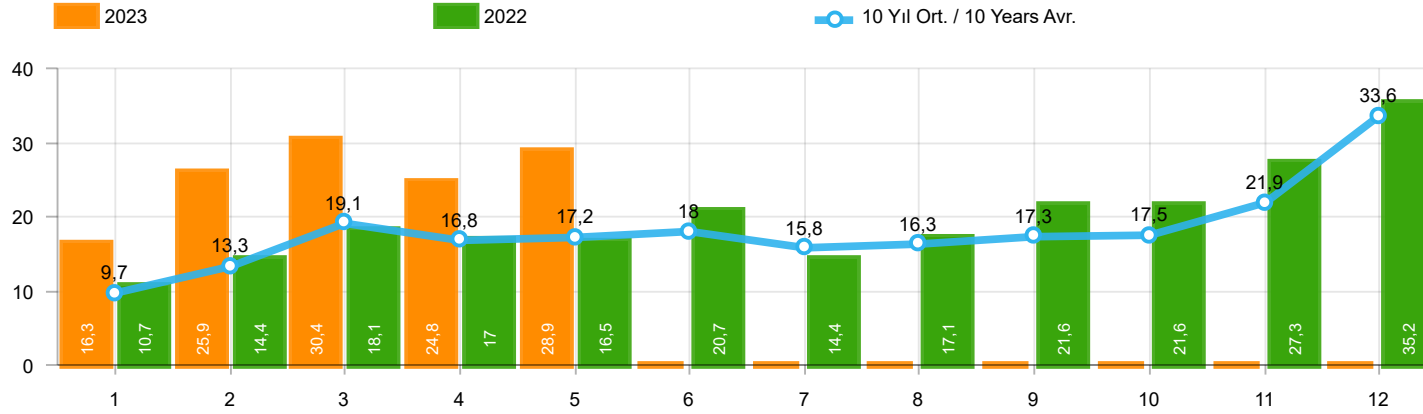
Aylar / Months	10 Yıl Ort. / 10 Years Avr.	2023	%
1	34.512	53.575	55,2
2	48.807	84.781	73,7
3	72.622	109.658	51,0
4	65.666	102.213	55,7
5	68.722	116.152	69,0
TOPLAM/TOTAL	290.331	466.379	60,6

Yıl / Year	1	2	3	4	5	6	7	8	9	10	11	12	1-5 Toplam / Total	Toplam / Total	1-5 Yerli / Local	1-5 İthal / Import	İthal Oran / Import %
2013	37.563	51.133	72.943	77.265	85.835	78.043	75.152	67.662	71.388	60.690	83.470	136.048	324.739	897.192	102.453	222.286	68,5
2014	34.751	37.659	51.312	57.113	62.447	64.295	62.770	63.303	70.764	69.742	84.368	154.843	243.282	813.367	80.931	162.351	66,7
2015	37.256	59.221	89.765	96.182	85.804	91.071	87.358	85.244	67.181	67.086	88.431	164.464	368.228	1.019.063	132.229	235.999	64,1
2016	34.369	54.840	85.932	87.748	97.090	94.666	59.732	73.654	69.413	85.666	125.462	145.706	359.979	1.014.278	122.735	237.244	65,9
2017	36.640	48.585	76.178	78.231	88.066	85.820	84.727	74.818	74.046	94.439	103.772	141.507	327.700	986.829	120.781	206.919	63,1
2018	36.525	48.768	79.600	73.886	74.996	52.788	54.194	35.137	23.915	22.321	59.406	80.014	313.775	641.550	120.190	193.585	61,7
2019	14.847	25.569	50.651	31.944	33.947	43.899	18.442	26.832	43.068	50.288	59.575	92.885	156.958	491.947	71.913	85.045	54,2
2020	28.123	48.948	51.554	27.165	33.308	72.789	89.419	63.570	93.406	97.125	82.824	107.919	189.098	796.150	78.799	110.299	58,3
2021	45.308	61.325	100.046	64.551	57.510	83.304	49.732	60.573	59.717	60.064	64.087	66.633	328.740	772.850	142.197	186.543	56,7
2022	39.741	52.030	68.241	62.584	68.221	84.788	55.424	52.297	66.304	69.072	86.499	121.962	290.817	827.163	126.468	164.349	56,5
2023	53.575	84.781	109.658	102.213	116.152								466.379	466.379	184.036	282.343	60,5



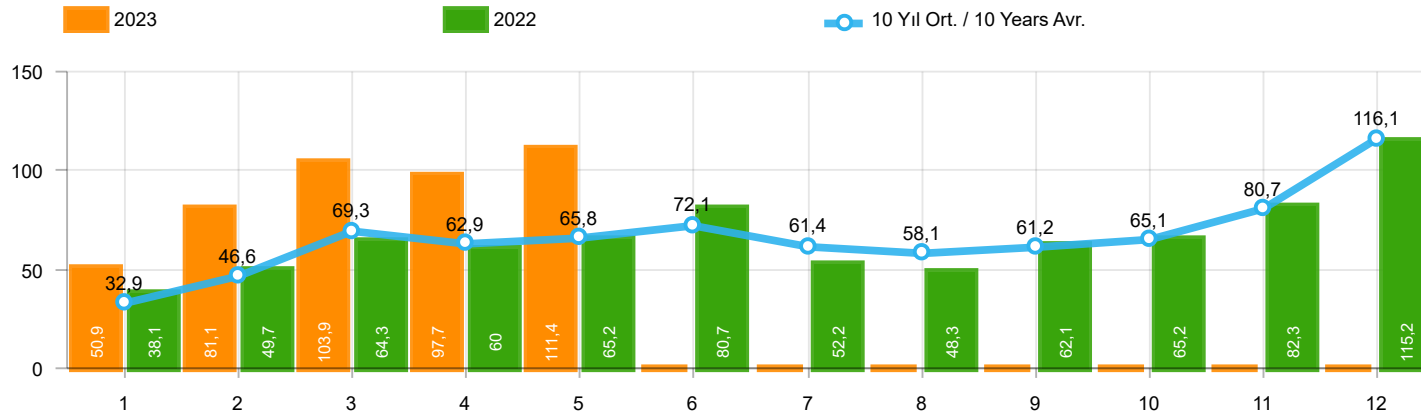
Aylar / Months	10 Yıl Ort. / 10 Years Avr.	2023	%
1	24.773	37.288	50,5
2	35.527	58.907	65,8
3	53.571	79.226	47,9
4	48.888	77.398	58,3
5	51.559	87.218	69,2
TOPLAM / TOTAL	214.317	340.037	58,7

Yıl / Year	1	2	3	4	5	6	7	8	9	10	11	12	1-5 Toplam / Total	Toplam / Total	1-5 Yerli / Local	1-5 İthal / Import	İthal Oran / Import %
2013	25.835	36.814	51.785	56.999	62.383	58.290	55.712	51.611	52.925	46.985	64.117	101.199	233.816	664.655	50.678	183.138	78,3
2014	24.368	27.167	37.812	42.769	46.379	47.278	46.602	45.131	49.262	50.814	59.695	110.054	178.495	587.331	44.465	134.030	75,1
2015	24.498	40.817	61.676	70.211	62.878	67.766	64.218	61.753	47.088	47.954	62.397	114.340	260.080	725.596	66.708	193.372	74,4
2016	23.358	40.588	63.975	65.618	73.832	71.111	45.566	53.977	51.340	63.746	95.783	108.044	267.371	756.938	71.260	196.111	73,3
2017	25.689	34.658	55.616	57.998	65.799	66.164	62.384	54.890	53.423	70.488	75.956	99.694	239.760	722.759	73.870	165.890	69,2
2018	26.611	35.901	59.798	55.108	57.227	41.225	42.024	26.976	17.595	16.809	46.204	60.843	234.645	486.321	78.002	156.643	66,8
2019	10.979	19.205	38.628	24.416	27.126	36.024	15.398	21.544	35.308	39.996	47.803	70.829	120.354	387.256	51.731	68.623	57,0
2020	22.016	37.727	39.887	21.825	25.073	57.067	69.427	44.372	71.296	76.341	64.357	80.721	146.528	610.109	53.305	93.223	63,6
2021	35.358	44.749	76.357	48.375	43.138	62.348	36.311	44.756	43.408	40.512	42.982	43.559	247.977	561.853	98.109	149.868	60,4
2022	29.020	37.641	50.173	45.564	51.750	64.134	41.031	35.230	44.681	47.440	59.222	86.774	214.148	592.660	79.497	134.651	62,9
2023	37.288	58.907	79.226	77.398	87.218								340.037	340.037	116.932	223.105	65,6



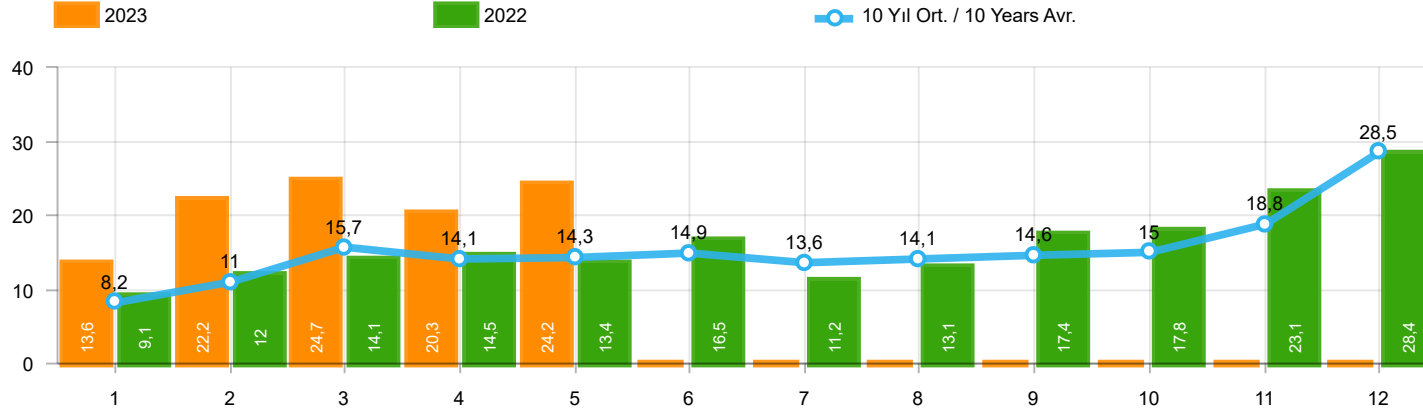
Aylar / Months	10 Yıl Ort. / 10 Years Avr.	2023	%
1	9.739	16.287	67,2
2	13.281	25.874	94,8
3	19.052	30.432	59,7
4	16.779	24.815	47,9
5	17.164	28.934	68,6
TOPLAM / TOTAL	76.014	126.342	66,2

Yıl / Year	1	2	3	4	5	6	7	8	9	10	11	12	1-5 Toplam / Total	Toplam / Total	1-5 Yerli / Local	1-5 İthal / Import	İthal Oran / Import %
2013	11.728	14.319	21.158	20.266	23.452	19.753	19.440	16.051	18.463	13.705	19.353	34.849	90.923	232.537	51.775	39.148	43,1
2014	10.383	10.492	13.500	14.344	16.068	17.017	16.168	18.172	21.502	18.928	24.673	44.789	64.787	226.036	36.466	28.321	43,7
2015	12.758	18.404	28.089	25.971	22.926	23.305	23.140	23.491	20.093	19.132	26.034	50.124	108.148	293.467	65.521	42.627	39,4
2016	11.011	14.252	21.957	22.130	23.258	23.555	14.166	19.677	18.073	21.920	29.679	37.662	92.608	257.340	51.475	41.133	44,4
2017	10.951	13.927	20.562	20.233	22.267	19.656	22.343	19.928	20.623	23.951	27.816	41.813	87.940	264.070	46.911	41.029	46,7
2018	9.914	12.867	19.802	18.778	17.769	11.563	12.170	8.161	6.320	5.512	13.202	19.171	79.130	155.229	42.188	36.942	46,7
2019	3.868	6.364	12.023	7.528	6.821	7.875	3.044	5.288	7.760	10.292	11.772	22.056	36.604	104.691	20.182	16.422	44,9
2020	6.107	11.221	11.667	5.340	8.235	15.722	19.992	19.198	22.110	20.784	18.467	27.198	42.570	186.041	25.494	17.076	40,1
2021	9.950	16.576	23.689	16.176	14.372	20.956	13.421	15.817	16.309	19.552	21.105	23.074	80.763	210.997	44.088	36.675	45,4
2022	10.721	14.389	18.068	17.020	16.471	20.654	14.393	17.067	21.623	21.632	27.277	35.188	76.669	234.503	46.971	29.698	38,7
2023	16.287	25.874	30.432	24.815	28.934								126.342	126.342	67.104	59.238	46,9



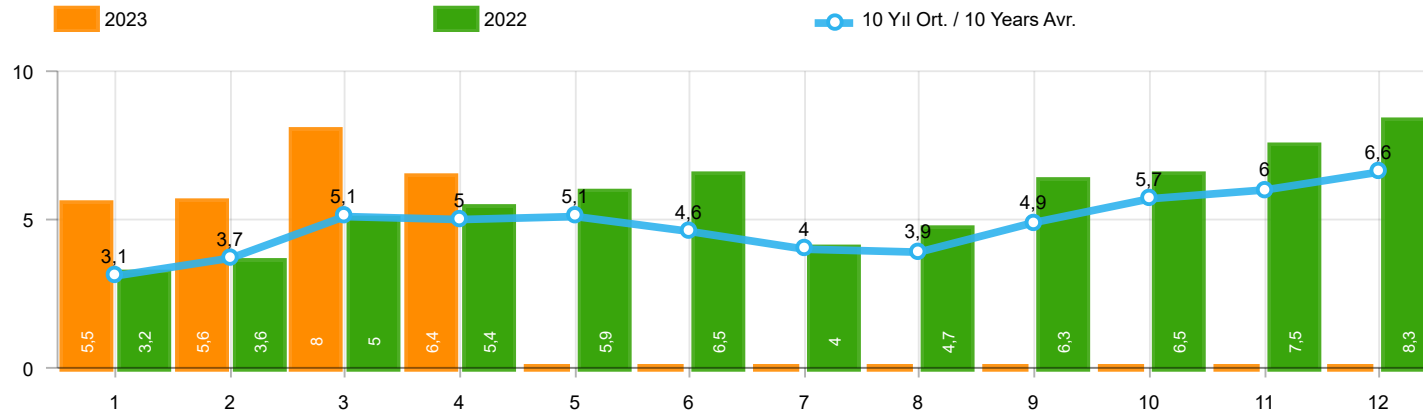
Aylar / Months	10 Yıl Ort. / 10 Years Avr.	2023	%
1	32.943	50.894	54,5
2	46.561	81.148	74,3
3	69.268	103.929	50,0
4	62.943	97.679	55,2
5	65.836	111.392	69,2
TOPLAM / TOTAL	277.551	445.042	60,4

Yıl / Year	1	2	3	4	5	6	7	8	9	10	11	12	1-5 Toplam / Total	Toplam / Total	1-5 Yerli / Local	1-5 İthal / Import	İthal Oran / Import %
2013	35.523	48.307	68.774	73.575	81.468	74.096	71.596	65.043	67.963	58.014	79.301	129.718	307.647	853.378	89.334	218.313	71,0
2014	32.670	35.021	47.581	53.305	58.121	60.163	59.907	60.199	66.531	66.573	80.621	146.989	226.698	767.681	67.992	158.706	70,0
2015	34.615	55.331	83.302	91.602	81.542	86.158	83.836	82.577	64.025	64.255	84.601	156.173	346.392	968.017	115.859	230.533	66,6
2016	32.713	52.825	82.948	84.887	93.904	91.540	58.533	71.556	67.593	83.000	122.309	141.912	347.277	983.720	113.643	233.634	67,3
2017	35.323	46.965	73.802	75.988	85.422	83.658	82.297	72.536	71.352	91.752	100.859	136.240	317.500	956.194	112.998	204.502	64,4
2018	35.076	47.009	76.345	71.126	72.755	51.037	52.734	34.346	23.028	21.571	58.204	77.706	302.311	620.937	112.694	189.617	62,7
2019	14.373	24.875	49.221	30.971	33.016	42.688	17.927	26.246	41.992	49.075	58.176	90.500	152.456	479.060	68.823	83.633	54,9
2020	27.273	47.122	50.008	26.457	32.235	70.973	87.401	61.533	90.619	94.733	80.141	104.293	183.095	772.788	74.497	108.598	59,3
2021	43.728	58.504	96.428	61.488	54.734	79.819	47.849	58.454	57.141	56.746	60.216	62.243	314.882	737.350	133.407	181.475	57,6
2022	38.131	49.652	64.267	60.035	65.167	80.652	52.206	48.336	62.084	65.222	82.311	115.220	277.252	783.283	116.604	160.648	57,9
2023	50.894	81.148	103.929	97.679	111.392								445.042	445.042	169.647	275.395	61,9



Aylar / Months	10 Yıl Ort / 10 Years Avr.	2023	%
1	8.169	13.606	66,6
2	11.034	22.241	101,6
3	15.697	24.703	57,4
4	14.055	20.281	44,3
5	14.278	24.174	69,3
TOPLAM / TOTAL	63.234	105.005	66,1

Yıl / Year	1	2	3	4	5	6	7	8	9	10	11	12	1-5 Toplam / Total	Toplam / Total	1-5 Yerli / Local	1-5 İthal / Import	İthal Oran / Import %
2013	9.688	11.493	16.989	16.576	19.085	15.806	15.884	13.432	15.038	11.029	15.184	28.519	73.831	188.723	38.656	35.175	47,6
2014	8.302	7.854	9.769	10.536	11.742	12.885	13.305	15.068	17.269	15.759	20.926	36.935	48.203	180.350	23.527	24.676	51,2
2015	10.117	14.514	21.626	21.391	18.664	18.392	19.618	20.824	16.937	16.301	22.204	41.833	86.312	242.421	49.151	37.161	43,1
2016	9.355	12.237	18.973	19.269	20.072	20.429	12.967	17.579	16.253	19.254	26.526	33.868	79.906	226.782	42.383	37.523	47,0
2017	9.634	12.307	18.186	17.990	19.623	17.494	19.913	17.646	17.929	21.264	24.903	36.546	77.740	233.435	39.128	38.612	49,7
2018	8.465	11.108	16.547	16.018	15.528	9.812	10.710	7.370	5.433	4.762	12.000	16.863	67.666	134.616	34.692	32.974	48,7
2019	3.394	5.670	10.593	6.555	5.890	6.664	2.529	4.702	6.684	9.079	10.373	19.671	32.102	91.804	17.092	15.010	46,8
2020	5.257	9.395	10.121	4.632	7.162	13.906	17.974	17.161	19.323	18.392	15.784	23.572	36.567	162.679	21.192	15.375	42,0
2021	8.370	13.755	20.071	13.113	11.596	17.471	11.538	13.698	13.733	16.234	17.234	18.684	66.905	175.497	35.298	31.607	47,2
2022	9.111	12.011	14.094	14.471	13.417	16.518	11.175	13.106	17.403	17.782	23.089	28.446	63.104	190.623	37.107	25.997	41,2
2023	13.606	22.241	24.703	20.281	24.174								105.005	105.005	52.715	52.290	49,8



Aylar / Months	10 Yıl Ort. / 10 Years Avr.	2023	%
1	3.083	5.533	79,5
2	3.701	5.569	50,5
3	5.145	7.959	54,7
4	5.014	6.433	28,3
TOPLAM / TOTAL	16.943	25.494	50,5

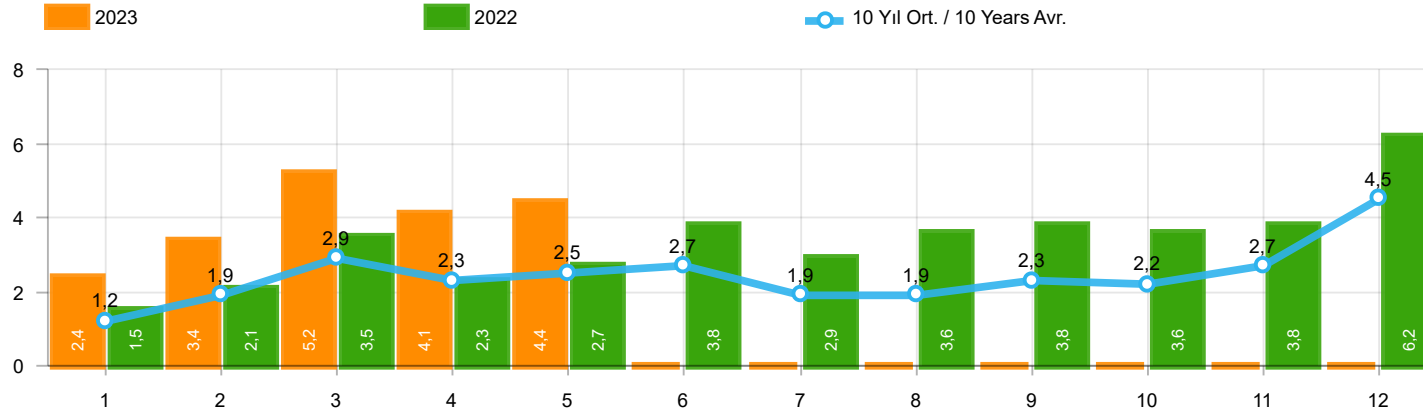
Yıl / Year	1	2	3	4	5	6	7	8	9	10	11	12	1-4 Toplam / Total	Toplam / Total
2013	2.161	2.432	4.005	4.585	5.616	3.136	4.574	3.408	4.935	4.762	5.781	6.891	13.183	52.286
2014	2.169	3.512	4.476	4.905	5.094	5.028	4.233	4.920	5.619	5.743	6.250	7.409	15.062	59.358
2015	3.124	3.984	5.460	6.383	6.078	5.748	4.677	5.044	4.765	7.049	6.898	7.564	18.951	66.774
2016	3.739	4.731	7.067	6.546	6.575	5.543	3.833	5.134	4.945	7.372	7.090	7.603	22.083	70.178
2017	3.974	4.964	6.773	6.780	7.057	5.356	5.003	4.396	6.064	7.734	7.457	7.351	22.491	72.909
2018	4.362	4.179	5.925	5.216	4.584	3.146	3.654	2.587	3.541	3.698	3.578	3.886	19.682	48.356
2019	1.311	1.401	2.143	2.126	2.229	1.538	2.039	1.579	2.284	2.828	3.037	3.782	6.981	26.297
2020	2.425	2.778	3.771	2.606	3.244	4.173	3.727	3.974	4.928	5.466	5.831	6.221	11.580	49.144
2021	4.411	5.395	6.845	5.581	4.200	5.571	3.846	3.093	6.100	5.351	6.901	6.776	22.232	64.070
2022	3.152	3.636	4.988	5.408	5.873	6.520	3.985	4.740	6.265	6.542	7.514	8.319	17.184	66.942
2023	5.533	5.569	7.959	6.433	-	-	-	-	-	-	-	-	25.494	25.494

Kaynak: TÜİK trafik kayıtları.

Rakamlar, son iki model yılına ait traktör tescillerinden oluşmaktadır.

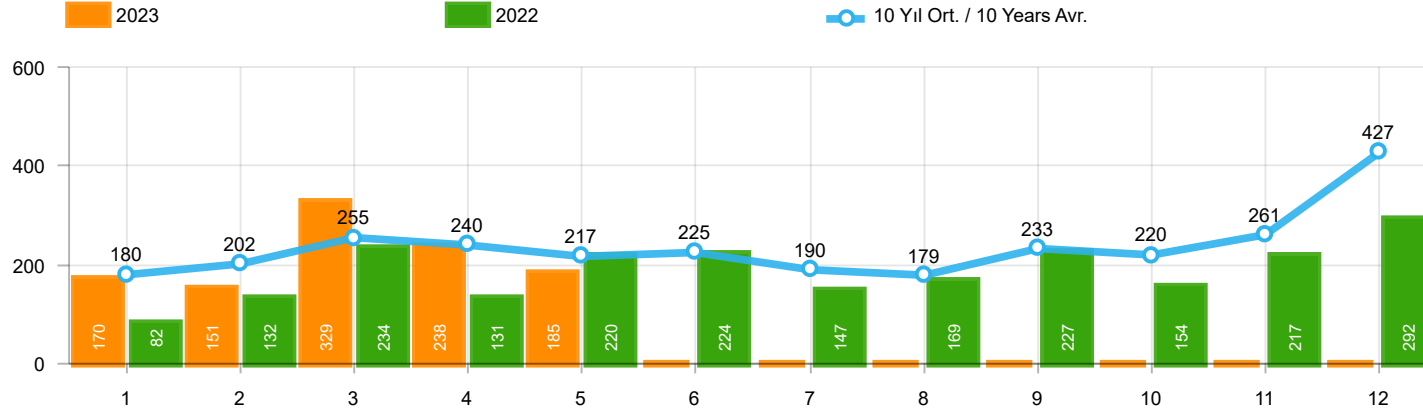
Source: Turkish Statistical Institute – Traffic registrations

Data represents the last two model year's farm tractors registration figures



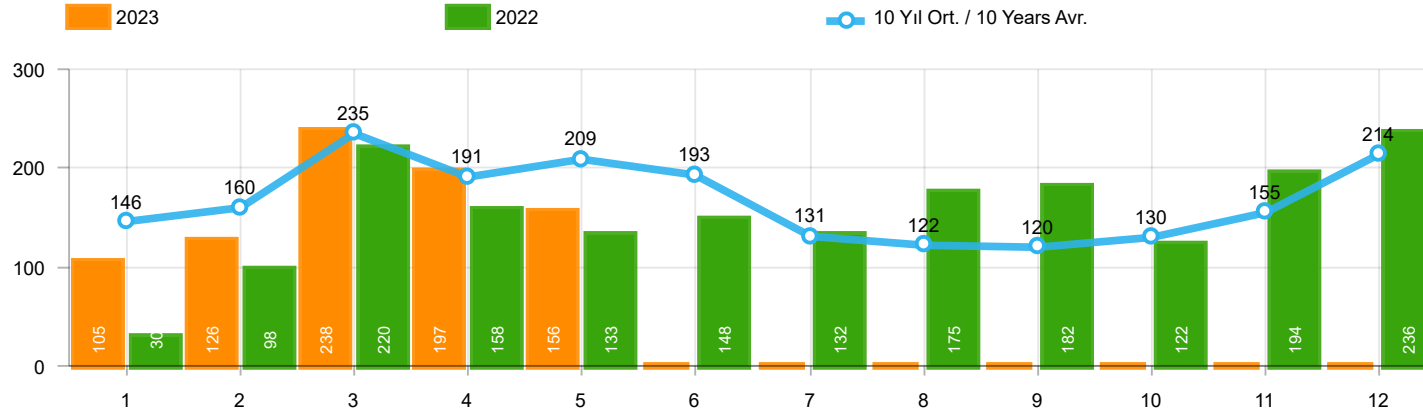
Aylar / Months	10 Yıl Ort / 10 Years Avr.	2023	%
1	1.244	2.406	93,3
2	1.885	3.356	78,0
3	2.865	5.162	80,2
4	2.293	4.099	78,8
5	2.460	4.419	79,6
TOPLAM / TOTAL	10.747	19.442	80,9

Yıl / Year	1	2	3	4	5	6	7	8	9	10	11	12	1-5 Toplam / Total	Toplam / Total	1-5 Yerli / Local	1-5 İthal / Import	İthal Oran / Import %
2013	1.484	2.113	3.343	2.925	3.504	3.186	2.777	2.103	2.875	2.086	3.631	5.444	13.369	35.471	9.402	3.967	29,7
2014	1.522	2.065	3.094	3.224	3.727	3.726	2.578	2.783	3.708	2.858	3.384	6.869	13.632	39.538	10.129	3.503	25,7
2015	2.215	3.346	5.699	3.729	3.600	4.253	2.922	2.211	2.687	2.266	3.146	7.307	18.589	43.381	13.165	5.424	29,2
2016	1.167	1.648	2.515	2.319	2.711	2.623	984	1.796	1.438	2.238	2.485	3.127	10.360	25.051	6.751	3.609	34,8
2017	931	1.290	1.982	1.888	2.184	1.891	1.974	1.860	2.284	2.188	2.487	4.438	8.275	25.397	5.870	2.405	29,1
2018	1.237	1.552	2.630	2.328	1.909	1.272	1.235	603	653	488	905	1.695	9.656	16.507	5.699	3.957	41,0
2019	342	579	1.255	842	728	981	435	497	854	1.047	1.100	2.087	3.746	10.747	2.334	1.412	37,7
2020	682	1.475	1.290	628	921	1.570	1.809	1.835	2.660	2.239	2.537	3.358	4.996	21.004	3.295	1.701	34,0
2021	1.366	2.633	3.319	2.788	2.617	3.238	1.799	1.942	2.377	3.067	3.549	4.045	12.723	32.740	7.655	5.068	39,8
2022	1.498	2.148	3.520	2.260	2.701	3.764	2.939	3.617	3.811	3.574	3.777	6.214	12.127	39.823	8.426	3.701	30,5
2023	2.406	3.356	5.162	4.099	4.419								19.442	19.442	12.494	6.948	35,7



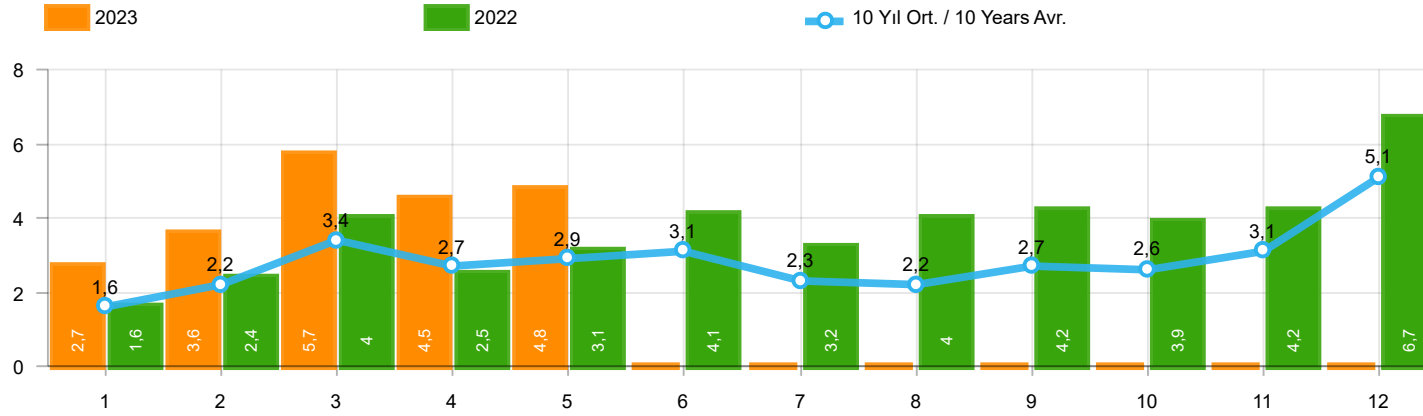
Aylar / Months	10 Yıl Ort / 10 Years Avr.	2023	%
1	180	170	-5,5
2	202	151	-25,1
3	255	329	28,8
4	240	238	-,7
5	217	185	-14,7
TOPLAM / TOTAL	1.094	1.073	-1,9

Yıl / Year	1	2	3	4	5	6	7	8	9	10	11	12	1-5 Toplam / Total	Toplam / Total
2013	191	268	289	276	283	241	367	235	305	392	415	697	1.307	3.959
2014	360	394	384	333	294	258	216	229	395	220	266	653	1.765	4.002
2015	280	322	451	561	372	405	389	253	316	394	325	621	1.986	4.689
2016	309	158	251	302	261	196	139	220	241	230	354	431	1.281	3.092
2017	212	211	227	231	272	156	250	235	318	268	317	594	1.153	3.291
2018	134	142	410	296	207	315	180	146	160	155	184	425	1.189	2.754
2019	57	61	63	96	106	189	55	44	138	138	257	244	383	1.448
2020	104	221	128	35	97	134	111	123	77	71	82	137	585	1.320
2021	70	108	117	135	58	131	44	139	153	178	188	172	488	1.493
2022	82	132	234	131	220	224	147	169	227	154	217	292	799	2.229
2023	170	151	329	238	185								1.073	1.073



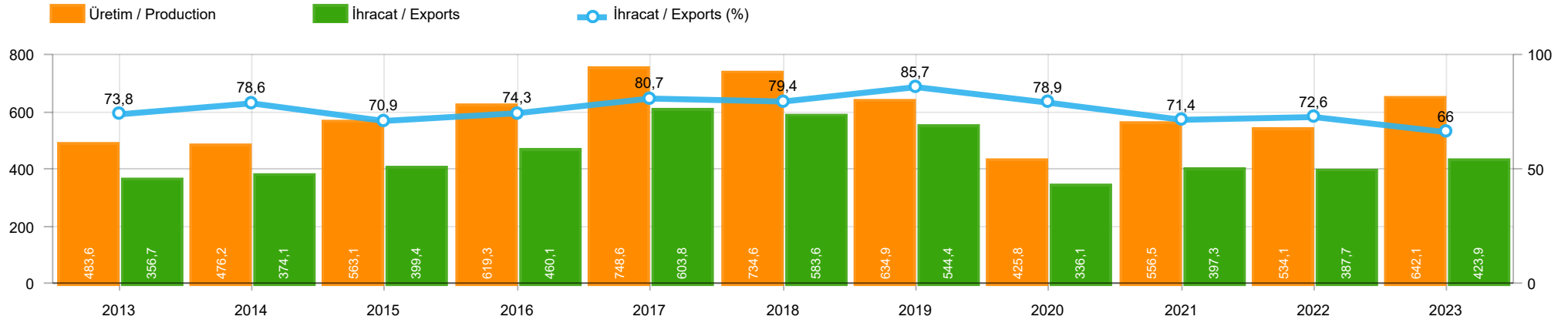
Aylar / Months	10 Yıl Ort / 10 Years Avr.	2023	%
1	146	105	-27,8
2	160	126	-21,3
3	235	238	1,5
4	191	197	3,2
5	209	156	-25,3
TOPLAM / TOTAL	940	822	-12,5

Yıl / Year	1	2	3	4	5	6	7	8	9	10	11	12	1-5 Toplam / Total	Toplam / Total	1-5 Yerli / Local	1-5 İthal / Import	İthal Oran / Import %
2013	365	445	537	489	580	520	412	281	245	198	123	189	2.416	4.384	2.410	6	0,2
2014	199	179	253	251	305	148	69	92	130	91	97	332	1.187	2.146	1.045	142	12,0
2015	146	222	313	290	290	255	211	203	153	171	359	363	1.261	2.976	1.219	42	3,3
2016	180	209	218	240	214	307	76	82	141	198	314	236	1.061	2.415	1.060	1	0,1
2017	174	119	167	124	188	115	206	187	92	231	109	235	772	1.947	760	12	1,6
2018	78	65	215	136	125	164	45	42	74	107	113	188	619	1.352	608	11	1,8
2019	75	54	112	35	97	41	25	45	84	28	42	54	373	692	373	-	-
2020	64	130	128	45	55	112	98	79	50	82	64	131	422	1.038	422	-	-
2021	144	80	182	140	101	116	40	38	46	73	134	173	647	1.267	647	-	-
2022	30	98	220	158	133	148	132	175	182	122	194	236	639	1.828	639	-	-
2023	105	126	238	197	156								822	822	822	-	-



Aylar / Months	10 Yıl Ort / 10 Years Avr.	2023	%
1	1.570	2.681	70,8
2	2.247	3.633	61,7
3	3.355	5.729	70,8
4	2.724	4.534	66,5
5	2.886	4.760	64,9
TOPLAM / TOTAL	12.781	21.337	67,0

Yıl / Year	1	2	3	4	5	6	7	8	9	10	11	12	1-5 Toplam / Total	Toplam / Total	1-5 Yerli / Local	1-5 İthal / Import	İthal Oran / Import %
2013	2.040	2.826	4.169	3.690	4.367	3.947	3.556	2.619	3.425	2.676	4.169	6.330	17.092	43.814	13.119	3.973	23,2
2014	2.081	2.638	3.731	3.808	4.326	4.132	2.863	3.104	4.233	3.169	3.747	7.854	16.584	45.686	12.939	3.645	22,0
2015	2.641	3.890	6.463	4.580	4.262	4.913	3.522	2.667	3.156	2.831	3.830	8.291	21.836	51.046	16.370	5.466	25,0
2016	1.656	2.015	2.984	2.861	3.186	3.126	1.199	2.098	1.820	2.666	3.153	3.794	12.702	30.558	9.092	3.610	28,4
2017	1.317	1.620	2.376	2.243	2.644	2.162	2.430	2.282	2.694	2.687	2.913	5.267	10.200	30.635	7.783	2.417	23,7
2018	1.449	1.759	3.255	2.760	2.241	1.751	1.460	791	887	750	1.202	2.308	11.464	20.613	7.496	3.968	34,6
2019	474	694	1.430	973	931	1.211	515	586	1.076	1.213	1.399	2.385	4.502	12.887	3.090	1.412	31,4
2020	850	1.826	1.546	708	1.073	1.816	2.018	2.037	2.787	2.392	2.683	3.626	6.003	23.362	4.302	1.701	28,3
2021	1.580	2.821	3.618	3.063	2.776	3.485	1.883	2.119	2.576	3.318	3.871	4.390	13.858	35.500	8.790	5.068	36,6
2022	1.610	2.378	3.974	2.549	3.054	4.136	3.218	3.961	4.220	3.850	4.188	6.742	13.565	43.880	9.864	3.701	27,3
2023	2.681	3.633	5.729	4.534	4.760								21.337	21.337	14.389	6.948	32,6



	2013	2014	2015	2016	2017	2018	2019	2020	2021	2022	2023
İhracat/Export	356.715	374.097	399.385	460.064	603.764	583.610	544.422	336.074	397.262	387.675	423.866
Üretim/Production	483.647	476.226	563.100	619.319	748.575	734.633	634.924	425.806	556.514	534.098	642.082
İhracat/Exports (%)	73,8	78,6	70,9	74,3	80,7	79,4	85,7	78,9	71,4	72,6	66

Taşıt Araçları İhracatı (2021 - 2023)
Motor Vehicle Exports (2021 - 2023)

SEKTÖR / SECTOR	2021	2022	1/5-2022	1/5-2023	2023/2022 %
OTOMOBİL / Pass.Car	565.370	571.218	215.892	263.854	22,2
OTOMOBİL TOPLAM / Pass. Car Total	565.370	571.218	215.892	263.854	22,2
KAMYON / Truck	17.293	20.123	8.006	7.992	-0,2
KAMYONET / Pick Up	310.874	335.148	139.112	122.169	-12,2
OTOBÜS / Bus	4.750	6.579	1.704	3.314	94,5
MINİBÜS / Minibus	37.741	36.016	15.352	17.428	13,5
MİDİBÜS / Midibus	987	1.040	319	519	62,7
TİCARİ ARAÇLAR TOPLAM / Commercial Vehicle Total	371.645	398.906	164.493	151.422	-7,9
TAŞIT ARAÇLARI TOPLAM / Motor Vehicles Total	937.015	970.124	380.385	415.276	9,2
TRAKTÖR / F.Tractor	17.038	18.154	7.290	8.590	17,8
TRAKTÖR TOPLAM / F.Tractor Total	17.038	18.154	7.290	8.590	17,8
GENEL TOPLAM / GRAND TOTAL	954.053	988.278	387.675	423.866	9,3

Üretici Bazında İhracat (adet)
Exports by Manufacturer (unit)

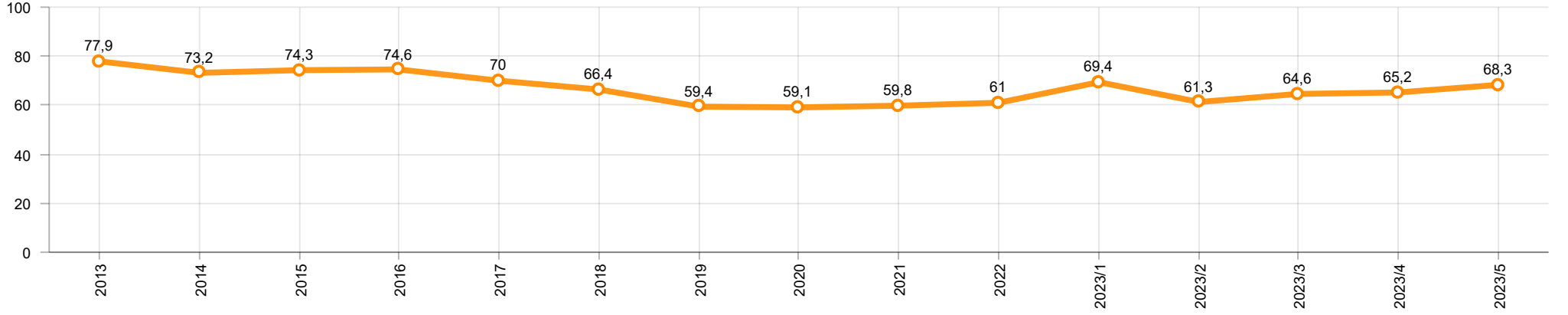
Üreticiler / Manufacturers	2021	2022	1-5 / 2022	1-5 / 2023
A.I.O.S.	1.100	911	256	380
FORD OTOSAN	287.609	297.828	124.543	131.582
HATTAT TRAKTÖR	862	1.059	566	301
HYUNDAI ASSAN	138.739	176.664	75.892	89.746
KARSAN	2.135	301	53	81
M. BENZ TÜRK	13.911	15.674	6.316	6.378
MAN TÜRKİYE	1.573	1.786	525	971
OTOKAR	749	1.506	284	731
OYAK RENAULT	187.923	176.844	42.227	83.301
TEMSA	599	587	128	343
TOFAŞ	112.465	121.477	48.004	23.232
TOYOTA	187.907	176.546	82.157	78.531
TÜRK TRAKTÖR	16.176	17.095	6.724	8.289
GENEL TOPLAM / Grand Total	951.748	988.278	387.675	423.866

Otomotiv Ana ve Yan Sanayii İhracatı (ABD \$)
CBU and CKD Exports - \$

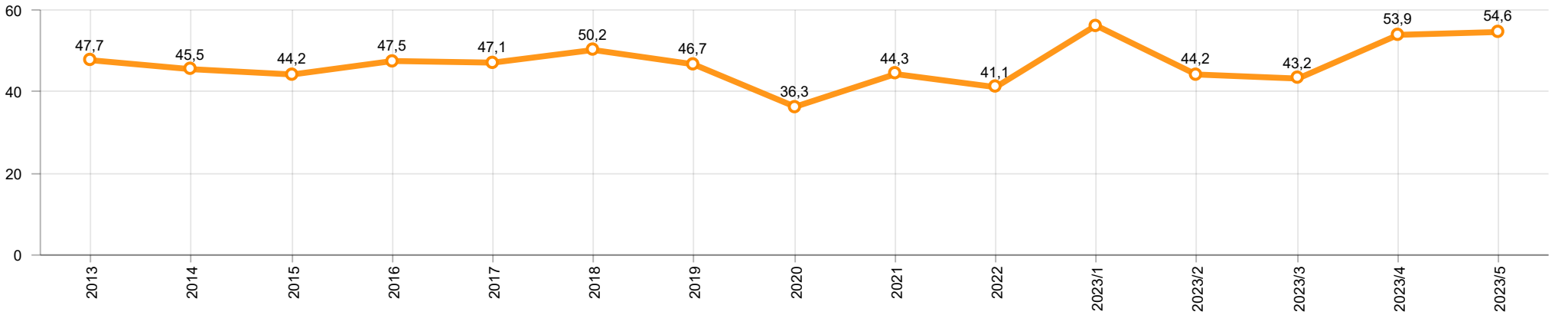
Sektör / Sector	2021	2022	OCAK - MAYIS / January - May 2022	OCAK - MAYIS / January - May 2023	2023 / 2022 %
Toplam Yan Sanayi / Total Component Industry	11.824.049.653,01	12.831.129.592,62	5.254.746.683,18	5.967.044.176,14	13,6
İç ve Dış Lastik / Tyres	1.630.367.018,49	1.767.320.167	740.796.107,65	760.691.393,03	2,7
Emniyet Camı / Safety Glasses	203.192.140,55	234.466.834,44	99.267.500,23	108.722.122,95	9,5
Motor / Engine	296.695.616,13	233.029.231,53	117.177.063,51	101.990.833,2	-13,0
Akümülatör / Batteries	509.199.445,03	547.895.439,61	210.990.449,06	190.247.186,93	-9,8
Diğer Aksam ve Parça / Spare Parts&Components	9.184.595.432,81	10.048.417.920,04	4.086.515.562,73	4.805.392.640,03	17,6
Toplam Ana Sanayi / Total Vehicle Industry	18.048.636.689,96	18.677.239.435,86	7.399.470.414,73	8.693.417.518,74	17,5
Otobüs / Bus	1.014.817.251,08	1.201.795.118,6	322.849.988,53	606.581.749,9	87,9
Midibüs-Minibüs / Midibus-Minibus	193.913.261,22	163.044.669,04	81.618.123,63	108.902.157,31	33,4
Otomobil / P.Cars	9.272.072.907,39	9.069.547.725,1	3.617.197.450,98	4.403.253.006,47	21,7
Kamyon-Kamyonet / Truck-Pick Up&Van	5.420.090.951,32	5.633.803.021,79	2.370.042.549,98	2.432.423.289,31	2,6
Römork ve Yarı Römork / Trailer-Semi Trailer	609.758.049,6	763.209.294,39	286.110.656,57	321.696.257,92	12,4
Çekici / Tractor	1.018.262.590,07	1.266.205.170,15	501.597.386,1	561.452.272,43	11,9
Tarım Traktörü / Farm Tractor	519.721.679,28	579.634.436,79	220.054.258,94	259.108.785,4	17,7
Toplam / Total	29.872.686.342,97	31.508.369.028,48	12.654.217.097,91	14.660.461.694,88	15,9

Kaynak: Uludağ İhracatçı Birlikleri . ÜİB tarafından OSD için özel olarak analiz edilen Otomotiv İhracatı kapsamında; ÜİB Türkiye Geneli Otomotiv Endüstrisi sınıflandırmasına kıyasla “Römork ve Yarı Römork” , “Tarım Traktörü” verileri dahil edilmekte; “Kullanılmış Araçlar” ,”İki Tekerlekli Taşıtlar” , “Demiryolu Taşıtları” hariç tutulmaktadır.

Otomobil Pazarında İthalatın Payı (%)
Import Share in P.Car Market (%)



Hafif Ticari Araçlar Pazarında İthalatın Payı (%)
Import Share in LCV Market (%)



Araç Tipleri / Vehicle Types	1	2	3	4	5	6	7	8	9	10	11	12	Toplam / Total
OTOMOBİL - Pass.Car	51.122	46.473	59.168	48.635	58.456								263.854
KAMYON - H. Truck	1.294	1.789	1.757	1.222	1.834								7.896
K.KAMYON - L. Truck	25	18	19	1	33								96
KAMYONET - Pick Up	23.167	26.083	29.741	21.455	21.723								122.169
OTOBÜS - Bus	479	584	754	709	788								3.314
MİNİBÜS - Minibus	3.212	3.734	4.144	3.268	3.070								17.428
MİDİBÜS - Midibus	82	82	118	122	115								519
TİCARİ ARAÇLAR TOPLAMI - CV Total	28.259	32.290	36.533	26.777	27.563								151.422
TAŞIT ARAÇLARI TOPLAMI - MV Total	79.381	78.763	95.701	75.412	86.019								415.276
TRAKTÖR - F.Tractor	1.718	1.698	1.813	1.681	1.680								8.590
GENEL TOPLAM - Grand Total	81.099	80.461	97.514	77.093	87.699								423.866

Otomobil / P.Car

Firmalar / Firms	1	2	3	4	5	6	7	8	9	10	11	12	Toplam / Total
FORD OTOSAN	-	-	-	-	-	-	-	-	-	-	-	-	-
HYUNDAI ASSAN	20.026	16.310	18.880	16.060	18.470	-	-	-	-	-	-	-	89.746
OYAK RENAULT	9.728	18.194	20.350	14.714	20.315	-	-	-	-	-	-	-	83.301
TOFAŞ	507	1.646	2.954	3.171	3.998	-	-	-	-	-	-	-	12.276
TOYOTA	20.861	10.323	16.984	14.690	15.673	-	-	-	-	-	-	-	78.531
TOPLAM - Total	51.122	46.473	59.168	48.635	58.456	-	-	-	-	-	-	-	263.854

Kamyonet / Pick-up

Firmalar / Firms	1	2	3	4	5	6	7	8	9	10	11	12	Toplam / Total
A.I.O.S.	-	-	-	-	-	-	-	-	-	-	-	-	-
FORD OTOSAN	20.603	23.319	26.833	20.387	20.049	-	-	-	-	-	-	-	111.191
KARSAN	-	-	-	-	-	-	-	-	-	-	-	-	-
OTOKAR	-	-	-	-	22	-	-	-	-	-	-	-	22
TOFAŞ	2.564	2.764	2.908	1.068	1.652	-	-	-	-	-	-	-	10.956
TOPLAM - Total	23.167	26.083	29.741	21.455	21.723	-	-	-	-	-	-	-	122.169

Minibüs / Minibus

Firmalar / Firms	1	2	3	4	5	6	7	8	9	10	11	12	Toplam / Total
FORD OTOSAN	3.212	3.734	4.138	3.268	3.070	-	-	-	-	-	-	-	17.422
KARSAN	-	-	6	-	-	-	-	-	-	-	-	-	6
TOPLAM - Total	3.212	3.734	4.144	3.268	3.070	-	-	-	-	-	-	-	17.428

Kamyon / Truck

Firmalar / Firms	1	2	3	4	5	6	7	8	9	10	11	12	Toplam / Total
A.I.O.S.	24	18	2	-	19	-	-	-	-	-	-	-	63
FORD OTOSAN	459	619	732	548	611	-	-	-	-	-	-	-	2.969
KARSAN	-	-	-	-	-	-	-	-	-	-	-	-	-
M. BENZ TÜRK	835	1.170	1.025	674	1.223	-	-	-	-	-	-	-	4.927
OTOKAR	1	-	-	1	6	-	-	-	-	-	-	-	8
TEMSA	-	-	17	-	8	-	-	-	-	-	-	-	25
TOPLAM - Total	1.319	1.807	1.776	1.223	1.867	-	-	-	-	-	-	-	7.992

Midibüs / Midibus

Firmalar / Firms	1	2	3	4	5	6	7	8	9	10	11	12	Toplam / Total
A.I.O.S.	39	35	54	28	39	-	-	-	-	-	-	-	195
KARSAN	-	24	19	2	5	-	-	-	-	-	-	-	50
OTOKAR	39	12	11	67	53	-	-	-	-	-	-	-	182
TEMSA	4	11	34	25	18	-	-	-	-	-	-	-	92
TOPLAM - Total	82	82	118	122	115	-	-	-	-	-	-	-	519

Otobüs / Bus

Firmalar / Firms	1	2	3	4	5	6	7	8	9	10	11	12	Toplam / Total
A.I.O.S.	11	21	42	26	22	-	-	-	-	-	-	-	122
KARSAN	-	2	18	-	5	-	-	-	-	-	-	-	25
M. BENZ TÜRK	285	278	320	252	316	-	-	-	-	-	-	-	1.451
MAN TÜRKİYE	86	133	218	268	266	-	-	-	-	-	-	-	971
OTOKAR	83	137	96	90	113	-	-	-	-	-	-	-	519
TEMSA	14	13	60	73	66	-	-	-	-	-	-	-	226
TOPLAM - Total	479	584	754	709	788	-	-	-	-	-	-	-	3.314

Traktör / F.Tractor

Firmalar / Firms	1	2	3	4	5	6	7	8	9	10	11	12	Toplam / Total
HATTAT TRAKTÖR	80	44	47	80	50	-	-	-	-	-	-	-	301
TÜRK TRAKTÖR	1.638	1.654	1.766	1.601	1.630	-	-	-	-	-	-	-	8.289
TOPLAM - Total	1.718	1.698	1.813	1.681	1.680	-	-	-	-	-	-	-	8.590

Firmalar / Firms	2022 Toplam / Total	1	2	3	4	5	6	7	8	9	10	11	12	Toplam / Total
Alfa Romeo	820	138	235	204	131	428	-	-	-	-	-	-	-	1.136
Aston Martin	28	3	-	2	1	5	-	-	-	-	-	-	-	11
Audi	14.554	848	1.662	2.457	2.044	2.006	-	-	-	-	-	-	-	9.017
Bentley	15	3	2	5	-	1	-	-	-	-	-	-	-	11
BMW	18.056	580	1.692	2.645	2.123	2.157	-	-	-	-	-	-	-	9.197
Chery	-	-	-	629	1.401	3.509	-	-	-	-	-	-	-	5.539
Citroen	21.913	1.412	2.198	3.305	2.816	5.607	-	-	-	-	-	-	-	15.338
CUPRA	2.792	112	161	1.084	715	451	-	-	-	-	-	-	-	2.523
Dacia	36.000	5.074	3.312	3.716	3.884	2.837	-	-	-	-	-	-	-	18.823
DFSK	352	48	69	109	12	35	-	-	-	-	-	-	-	273
DS	1.829	106	287	324	434	433	-	-	-	-	-	-	-	1.584
Ferrari	22	-	-	5	3	2	-	-	-	-	-	-	-	10
Fiat	276	23	7	220	54	125	-	-	-	-	-	-	-	429
Ford	8.421	558	1.510	2.639	2.610	3.121	-	-	-	-	-	-	-	10.438
Honda	21.429	1.196	1.355	1.681	1.380	2.228	-	-	-	-	-	-	-	7.840
Hyundai	14.198	804	656	906	1.221	610	-	-	-	-	-	-	-	4.197
Jaguar	90	1	4	16	9	32	-	-	-	-	-	-	-	62
Jeep	2.422	150	160	158	346	325	-	-	-	-	-	-	-	1.139
Kia	18.462	733	1.439	1.737	1.667	1.890	-	-	-	-	-	-	-	7.466
Lamborghini	14	-	1	2	2	-	-	-	-	-	-	-	-	5
Land Rover	1.111	185	126	192	154	192	-	-	-	-	-	-	-	849
LEAPMOTOR	-	-	-	-	80	50	-	-	-	-	-	-	-	130
Lexus	336	15	5	29	86	57	-	-	-	-	-	-	-	192
Maserati	314	7	14	85	83	86	-	-	-	-	-	-	-	275
Mazda	181	10	16	20	17	20	-	-	-	-	-	-	-	83
Mercedes-Benz	18.661	573	950	1.448	2.860	1.256	-	-	-	-	-	-	-	7.087
MG	1.627	420	403	570	641	790	-	-	-	-	-	-	-	2.824
Mini	1.385	61	109	262	71	315	-	-	-	-	-	-	-	818
Mitsubishi	583	2	35	30	31	24	-	-	-	-	-	-	-	122
Nissan	9.337	728	750	607	2.762	1.066	-	-	-	-	-	-	-	5.913
Opel	30.378	1.476	3.519	4.706	5.107	8.798	-	-	-	-	-	-	-	23.606
Peugeot	23.345	1.628	5.065	6.874	4.659	6.855	-	-	-	-	-	-	-	25.081
Porsche	668	184	98	95	50	96	-	-	-	-	-	-	-	523
Renault	17.713	1.057	1.618	455	851	1.070	-	-	-	-	-	-	-	5.051
Seat	6.142	368	395	1.030	992	831	-	-	-	-	-	-	-	3.616
Skoda	19.464	2.740	2.971	4.234	2.846	2.759	-	-	-	-	-	-	-	15.550
SKYWELL	-	-	90	95	127	50	-	-	-	-	-	-	-	362
Ssangyong	804	17	-	-	65	16	-	-	-	-	-	-	-	98
Subaru	622	72	113	125	72	163	-	-	-	-	-	-	-	545
Suzuki	3.601	137	636	170	244	227	-	-	-	-	-	-	-	1.414
Toyota	5.767	1.003	475	954	485	896	-	-	-	-	-	-	-	3.813
Volkswagen	49.695	3.049	3.235	6.176	6.326	7.512	-	-	-	-	-	-	-	26.298
Volvo	8.228	368	732	1.150	964	603	-	-	-	-	-	-	-	3.817
GENEL TOPLAM - Grand Total	361.655	25.889	36.105	51.151	50.426	59.534	-	-	-	-	-	-	-	223.105

Firmalar / Firms	2022 Toplam / Total	1	2	3	4	5	6	7	8	9	10	11	12	Toplam / Total
Citroen	6.918	957	1.360	2.043	1.397	2.921	-	-	-	-	-	-	-	8.678
Fiat	2.561	165	487	150	822	401	-	-	-	-	-	-	-	2.025
Ford	1.323	111	58	141	32	29	-	-	-	-	-	-	-	371
Hyundai	2.935	248	188	513	555	513	-	-	-	-	-	-	-	2.017
Isuzu	1.317	64	91	99	218	246	-	-	-	-	-	-	-	718
Iveco	2.966	80	177	94	311	333	-	-	-	-	-	-	-	995
Kia	1.905	-	117	188	94	130	-	-	-	-	-	-	-	529
Land Rover	419	2	83	19	-	52	-	-	-	-	-	-	-	156
Mercedes-Benz	6.327	598	653	649	963	117	-	-	-	-	-	-	-	2.980
Mitsubishi	1.437	93	69	-	-	-	-	-	-	-	-	-	-	162
Opel	6.347	408	1.202	1.104	1.416	1.873	-	-	-	-	-	-	-	6.003
Peugeot	9.321	1.157	1.487	1.983	1.650	3.099	-	-	-	-	-	-	-	9.376
Renault	11.433	551	1.557	1.273	1.476	999	-	-	-	-	-	-	-	5.856
Ssangyong	489	114	69	77	122	104	-	-	-	-	-	-	-	486
Toyota	11.661	1.067	776	806	883	932	-	-	-	-	-	-	-	4.464
Volkswagen	10.646	2.027	1.466	1.527	1.002	1.452	-	-	-	-	-	-	-	7.474
GENEL TOPLAM - Grand Total	78.400	7.642	9.840	10.666	10.941	13.201	-	-	-	-	-	-	-	52.290

