



OTOMOTİV SANAYİİ DERNEĐİ
AUTOMOTIVE MANUFACTURERS ASSOCIATION

OTOMOTİV SEKTÖRÜ AYLIK DEĐERLENDİRME RAPORU TEMMUZ 2023

AUTOMOTIVE INDUSTRY MONTHLY REPORT
July 2023

OSD "OICA" Üyesidir © O I C A OSD is a Member of "OICA"

	7 - 2022	7 - 2023	%	1 - 7 / 2022	1 - 7 / 2023	%	8/2021 - 7/2022	8/2022 - 7/2023	%
Otomobil Üretimi/P.Cars Production	50.795	88.214	73,7	433.742	550.615	27,0	764.343	927.762	21,4
Toplam Üretim/Total Production	91.211	135.360	48,4	740.533	870.600	17,6	1.308.829	1.482.715	13,3
Otomobil Pazarı/P.Cars Market	41.031	85.916	109,4	319.313	516.288	61,7	534.530	789.635	47,7
Toplam Pazar/Total Market	55.424	116.063	109,4	431.029	697.726	61,9	742.103	1.093.860	47,4
Otomobil İthalatı/P.Cars Import	23.327	65.591	181,2	193.134	347.854	80,1	320.437	516.375	61,2
Toplam İthalat/Total Import	28.980	78.393	170,5	236.601	430.559	82,0	401.712	648.117	61,3
Otomobil İhracatı/P.Cars Export	27.319	50.196	83,7	298.373	375.670	25,9	540.382	648.515	20,0
Toplam İhracat/Total Export	59.636	80.875	35,6	526.641	586.795	11,4	950.871	1.030.278	8,4
Otomobil İhracatı(\$)/P.Cars Export (\$)	516.427.921,92	838.363.182,05	62,3	4.998.979.766	6.215.448.636	24,3	8.892.546.906	10.286.014.806	15,7
Toplam İhracat(\$)/Total Export (\$)*	2.086.479.875,16	2.771.967.281,73	32,9	17.555.405.087	20.492.932.562	16,7	30.712.486.161	34.437.989.745	12,1

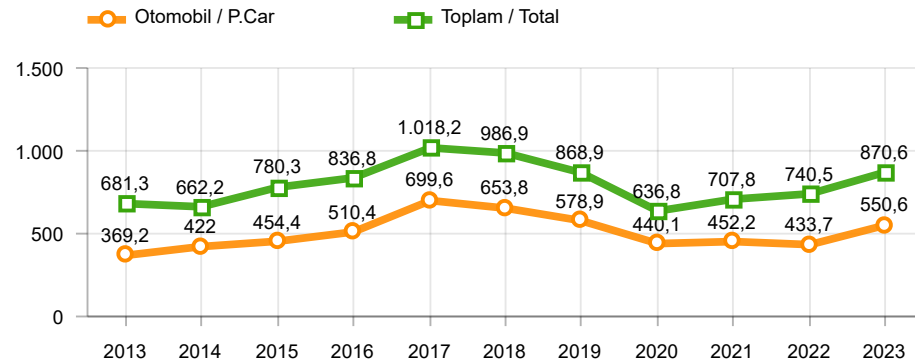
Parametreler/Parameters	7 - 2022	7 - 2023	%	1 - 7 / 2022	1 - 7 / 2023	%	8/2021 - 7/2022	8/2022 - 7/2023	%
ÜFE / PPI	5,2	8,2	-	70,0	24,3	-	97,3	78,5	-
TÜFE / CPI	2,4	9,5	-	45,7	31,1	-	49,7	57,5	-
Sanayi Endeksi / Industry Index	2,9	9,3	-	57,0	32,6	-	89,1	69,8	-
Dolar \$ ** (1 birim)	17,4	26,4	52,0	15,2	20,7	36,3	13,0	19,7	51,5
Euro € ** (1 birim)	17,8	29,2	64,3	16,4	22,5	36,9	14,4	20,9	45,0
Japon Yeni ¥ ** (100 birim)	12,6	18,6	47,3	12,1	15,2	25,4	10,7	14,3	32,8

*Toplam Sanayi / Total Industry Including Components

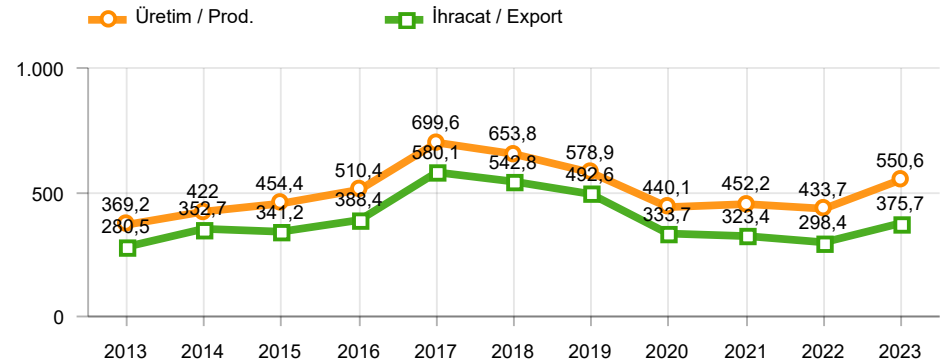
** Ortalama Değerler / Average Values

Araç Tipleri / Types	7 / 2022	7 / 2023	7 % Değişim	1-7 / 2022	1-7 / 2023	1-7 % Değişim
OTOMOBİL / Pass.Car	50.795	88.214	73,7	433.742	550.615	26,9
OTOMOBİL Toplam / Pass.Car Total	50.795	88.214	73,7	433.742	550.615	26,9
B.KAMYON / H. Truck	2.287	3.807	66,5	22.183	27.729	25,0
K.KAMYON / L. Truck	231	429	85,7	2.667	2.893	8,5
KAMYONET / Pick Up	32.966	36.708	11,4	246.943	247.374	0,2
OTOBÜS / Bus	584	884	51,4	3.886	5.588	43,8
MINİBÜS / Minibus	4.179	4.909	17,5	29.466	33.755	14,6
MİDİBÜS / Midibus	169	409	142,0	1.646	2.646	60,8
TİCARİ ARAÇLAR Toplam / Commercial Vehicles Total	40.416	47.146	16,7	306.791	319.985	4,3
TAŞIT ARAÇLARI Toplam / Motor Vehicles Total	91.211	135.360	48,4	740.533	870.600	17,6
TRAKTÖR / F.Tractor	2.630	5.015	90,7	27.310	35.066	28,4
TRAKTÖR Toplam / F.Tractor Total	2.630	5.015	90,7	27.310	35.066	28,4
GENEL TOPLAM / Grand Total	93.841	140.375	49,6	767.843	905.666	17,9

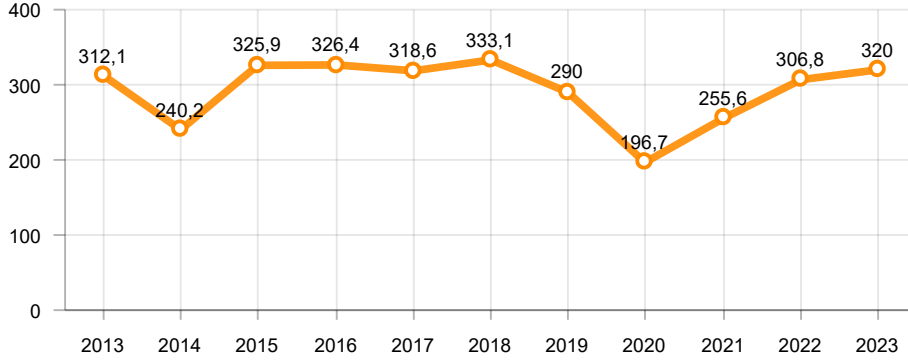
Toplam Üretim ve Otomobil Üretimi (x1000)(OCAK - TEMMUZ)
Total & P.Cars Production (x1000)(January - July)



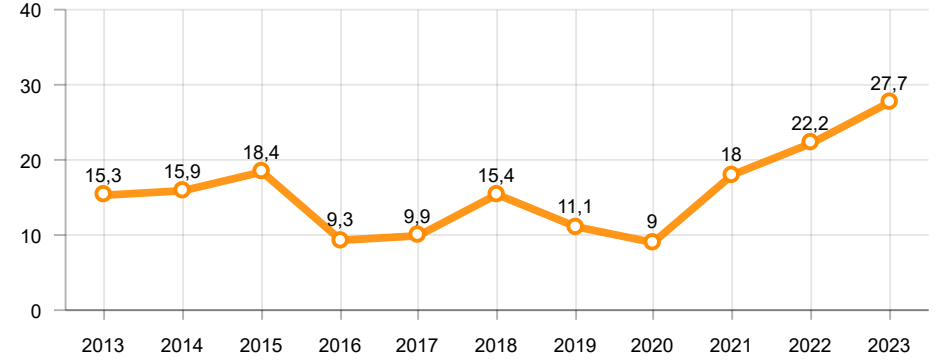
Otomobil Üretimi ve İhracat (x1000)(OCAK - TEMMUZ)
P.Cars Production & Exports (x1000)(January - July)



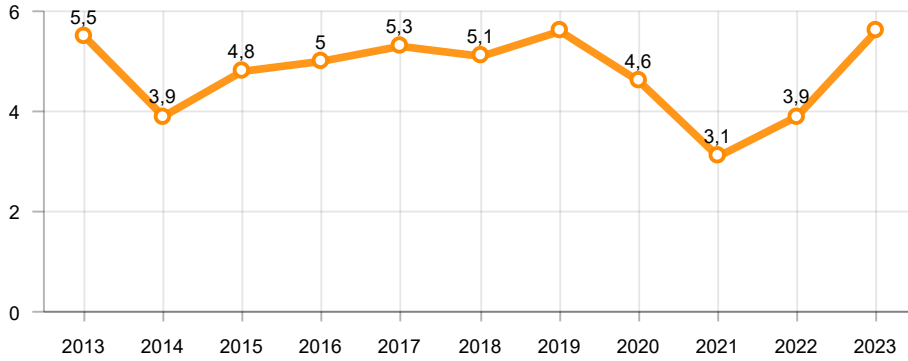
Ticari Araç Üretimi (x1000)(OCAK - TEMMUZ)
Commercial Vehicle Production (x1000)(January - July)



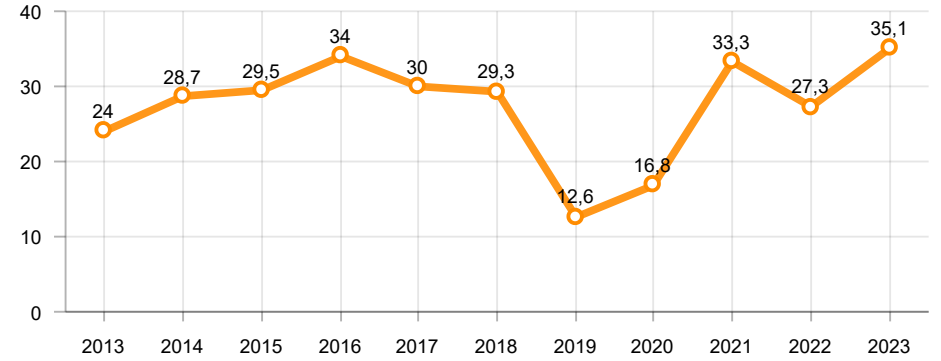
Büyük Kamyon Üretimi (x1000)(OCAK - TEMMUZ)
Heavy Truck Production (x1000)(January - July)

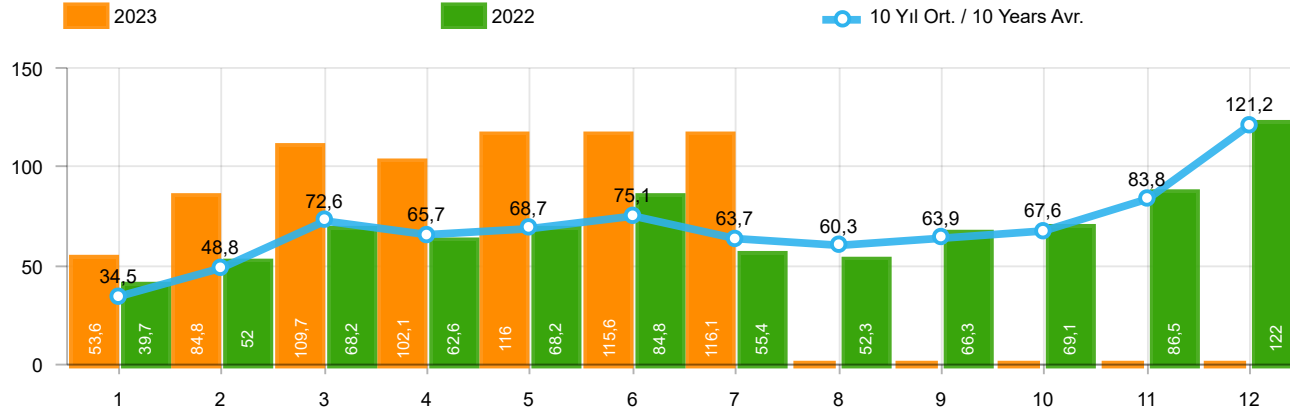


Otobüs Üretimi (x1000)(OCAK - TEMMUZ)
Bus Production (x1000)(January - July)



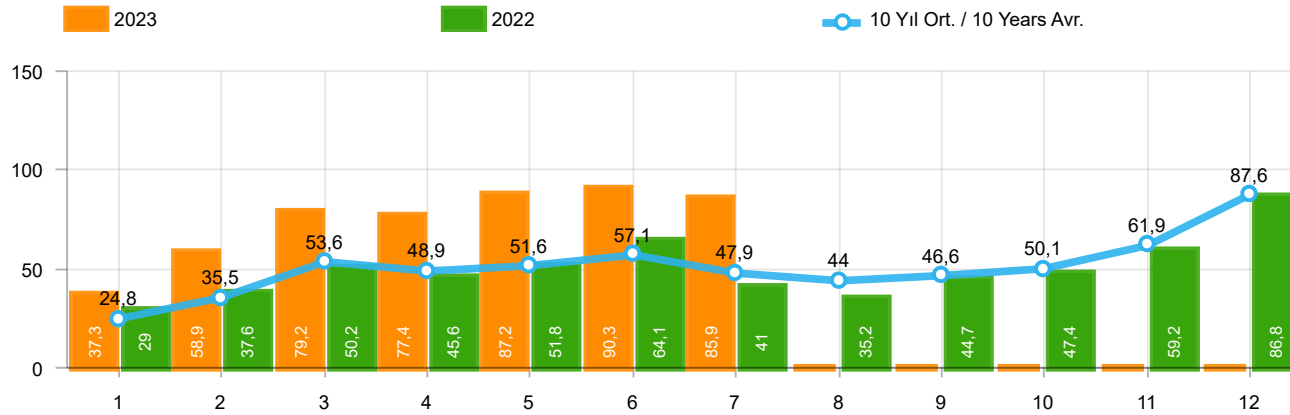
Traktör Üretimi (x1000)(OCAK - TEMMUZ)
F. Tractor Production (x1000)(January - July)





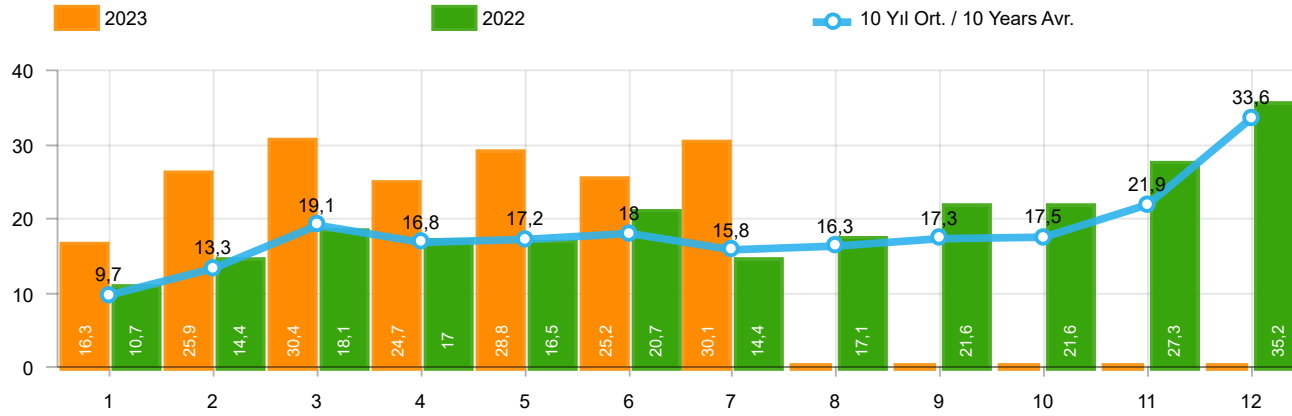
Aylar / Months	10 Yıl Ort. / 10 Years Avr.	2023	%
1	34.512	53.578	55,2
2	48.807	84.781	73,7
3	72.622	109.658	51,0
4	65.666	102.064	55,4
5	68.722	116.029	68,8
6	75.146	115.553	53,8
7	63.695	116.063	82,2
TOPLAM/TOTAL	429.172	697.726	62,6

Yıl / Year	1	2	3	4	5	6	7	8	9	10	11	12	1-7 Toplam / Total	Toplam / Total	1-7 Yerli / Local	1-7 İthal / Import	İthal Oran / Import %
2013	37.563	51.133	72.943	77.265	85.835	78.043	75.152	67.662	71.388	60.690	83.470	136.048	477.934	897.192	149.951	327.983	68,6
2014	34.751	37.659	51.312	57.113	62.447	64.295	62.770	63.303	70.764	69.742	84.368	154.843	370.347	813.367	124.339	246.008	66,4
2015	37.256	59.221	89.765	96.182	85.804	91.071	87.358	85.244	67.181	67.086	88.431	164.464	546.657	1.019.063	192.591	354.066	64,8
2016	34.369	54.840	85.932	87.748	97.090	94.666	59.732	73.654	69.413	85.666	125.462	145.706	514.377	1.014.278	169.892	344.485	67,0
2017	36.640	48.585	76.178	78.231	88.066	85.820	84.727	74.818	74.046	94.439	103.772	141.507	498.247	986.829	184.718	313.529	62,9
2018	36.525	48.768	79.600	73.886	74.996	52.788	54.194	35.137	23.915	22.321	59.406	80.014	420.757	641.550	162.259	258.498	61,4
2019	14.847	25.569	50.651	31.944	33.947	43.899	18.442	26.832	43.068	50.288	59.575	92.885	219.299	491.947	101.160	118.139	53,9
2020	28.123	48.948	51.554	27.165	33.308	72.789	89.419	63.570	93.406	97.125	82.824	107.919	351.306	796.150	156.055	195.251	55,6
2021	45.308	61.325	100.046	64.551	57.510	83.304	49.732	60.573	59.717	60.064	64.087	66.633	461.776	772.850	201.154	260.622	56,4
2022	39.741	52.030	68.241	62.584	68.221	84.788	55.424	52.297	66.304	69.072	86.499	121.962	431.029	827.163	194.428	236.601	54,9
2023	53.578	84.781	109.658	102.064	116.029	115.553	116.063						697.726	697.726	267.167	430.559	61,7



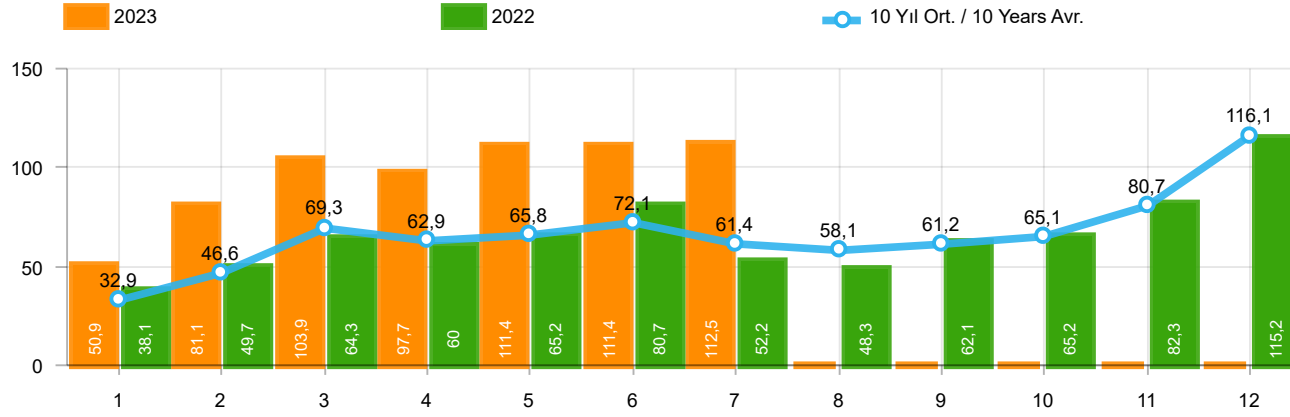
Aylar / Months	10 Yıl Ort. / 10 Years Avr.	2023	%
1	24.773	37.288	50,5
2	35.527	58.907	65,8
3	53.571	79.226	47,9
4	48.888	77.398	58,3
5	51.559	87.218	69,2
6	57.141	90.335	58,1
7	47.867	85.916	79,5
TOPLAM / TOTAL	319.325	516.288	61,7

Yıl / Year	1	2	3	4	5	6	7	8	9	10	11	12	1-7 Toplam / Total	Toplam / Total	1-7 Yerli / Local	1-7 İthal / Import	İthal Oran / Import %
2013	25.835	36.814	51.785	56.999	62.383	58.290	55.712	51.611	52.925	46.985	64.117	101.199	347.818	664.655	76.152	271.666	78,1
2014	24.368	27.167	37.812	42.769	46.379	47.278	46.602	45.131	49.262	50.814	59.695	110.054	272.375	587.331	68.746	203.629	74,8
2015	24.498	40.817	61.676	70.211	62.878	67.766	64.218	61.753	47.088	47.954	62.397	114.340	392.064	725.596	100.601	291.463	74,3
2016	23.358	40.588	63.975	65.618	73.832	71.111	45.566	53.977	51.340	63.746	95.783	108.044	384.048	756.938	97.512	286.536	74,6
2017	25.689	34.658	55.616	57.998	65.799	66.164	62.384	54.890	53.423	70.488	75.956	99.694	368.308	722.759	114.704	253.604	68,9
2018	26.611	35.901	59.798	55.108	57.227	41.225	42.024	26.976	17.595	16.809	46.204	60.843	317.894	486.321	107.178	210.716	66,3
2019	10.979	19.205	38.628	24.416	27.126	36.024	15.398	21.544	35.308	39.996	47.803	70.829	171.776	387.256	75.132	96.644	56,3
2020	22.016	37.727	39.887	21.825	25.073	57.067	69.427	44.372	71.296	76.341	64.357	80.721	273.022	610.109	107.268	165.754	60,7
2021	35.358	44.749	76.357	48.375	43.138	62.348	36.311	44.756	43.408	40.512	42.982	43.559	346.636	561.853	138.043	208.593	60,2
2022	29.020	37.641	50.173	45.564	51.750	64.134	41.031	35.230	44.681	47.440	59.222	86.774	319.313	592.660	126.179	193.134	60,5
2023	37.288	58.907	79.226	77.398	87.218	90.335	85.916						516.288	516.288	168.434	347.854	67,4



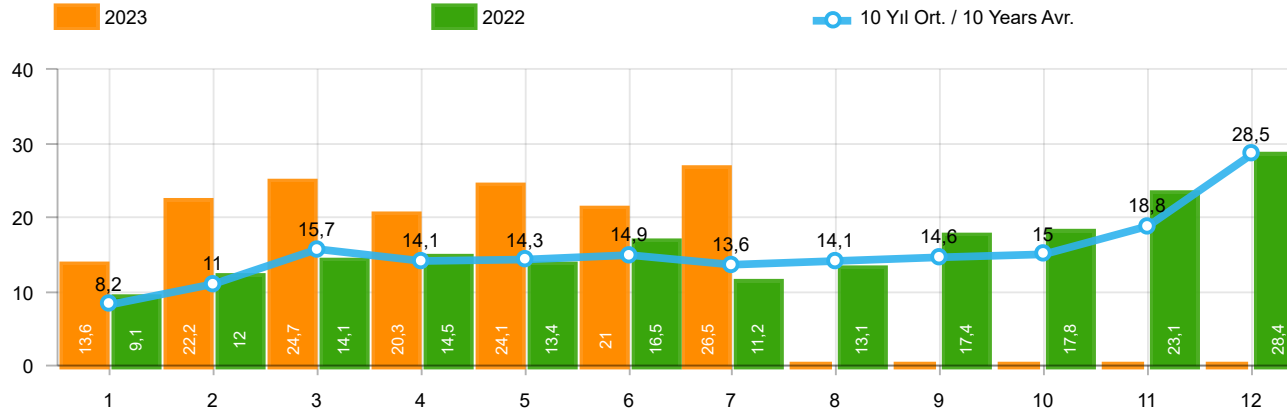
Aylar / Months	10 Yıl Ort. / 10 Years Avr.	2023	%
1	9.739	16.290	67,3
2	13.281	25.874	94,8
3	19.052	30.432	59,7
4	16.779	24.666	47,0
5	17.164	28.811	67,9
6	18.006	25.218	40,1
7	15.828	30.147	90,5
TOPLAM / TOTAL	109.848	181.438	65,2

Yıl / Year	1	2	3	4	5	6	7	8	9	10	11	12	1-7 Toplam / Total	Toplam / Total	1-7 Yerli / Local	1-7 İthal / Import	İthal Oran / Import %
2013	11.728	14.319	21.158	20.266	23.452	19.753	19.440	16.051	18.463	13.705	19.353	34.849	130.116	232.537	73.799	56.317	43,3
2014	10.383	10.492	13.500	14.344	16.068	17.017	16.168	18.172	21.502	18.928	24.673	44.789	97.972	226.036	55.593	42.379	43,3
2015	12.758	18.404	28.089	25.971	22.926	23.305	23.140	23.491	20.093	19.132	26.034	50.124	154.593	293.467	91.990	62.603	40,5
2016	11.011	14.252	21.957	22.130	23.258	23.555	14.166	19.677	18.073	21.920	29.679	37.662	130.329	257.340	72.380	57.949	44,5
2017	10.951	13.927	20.562	20.233	22.267	19.656	22.343	19.928	20.623	23.951	27.816	41.813	129.939	264.070	70.014	59.925	46,1
2018	9.914	12.867	19.802	18.778	17.769	11.563	12.170	8.161	6.320	5.512	13.202	19.171	102.863	155.229	55.081	47.782	46,5
2019	3.868	6.364	12.023	7.528	6.821	7.875	3.044	5.288	7.760	10.292	11.772	22.056	47.523	104.691	26.028	21.495	45,2
2020	6.107	11.221	11.667	5.340	8.235	15.722	19.992	19.198	22.110	20.784	18.467	27.198	78.284	186.041	48.787	29.497	37,7
2021	9.950	16.576	23.689	16.176	14.372	20.956	13.421	15.817	16.309	19.552	21.105	23.074	115.140	210.997	63.111	52.029	45,2
2022	10.721	14.389	18.068	17.020	16.471	20.654	14.393	17.067	21.623	21.632	27.277	35.188	111.716	234.503	68.249	43.467	38,9
2023	16.290	25.874	30.432	24.666	28.811	25.218	30.147						181.438	181.438	98.733	82.705	45,6



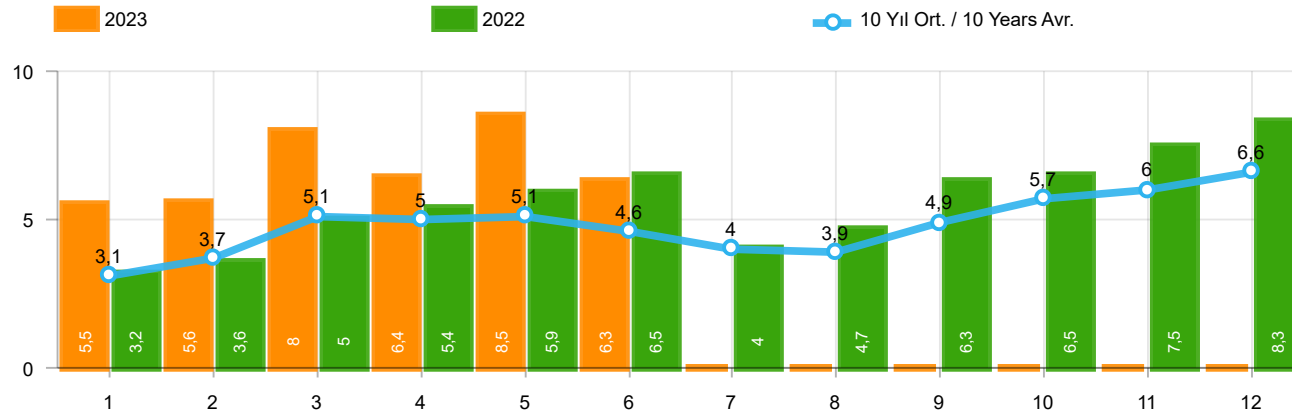
Aylar / Months	10 Yıl Ort. / 10 Years Avr.	2023	%
1	32.943	50.894	54,5
2	46.561	81.148	74,3
3	69.268	103.929	50,0
4	62.943	97.679	55,2
5	65.836	111.356	69,1
6	72.078	111.363	54,5
7	61.429	112.459	83,1
TOPLAM / TOTAL	411.058	668.828	62,7

Yıl / Year	1	2	3	4	5	6	7	8	9	10	11	12	1-7 Toplam / Total	Toplam / Total	1-7 Yerli / Local	1-7 İthal / Import	İthal Oran / Import %
2013	35.523	48.307	68.774	73.575	81.468	74.096	71.596	65.043	67.963	58.014	79.301	129.718	453.339	853.378	131.242	322.097	71,0
2014	32.670	35.021	47.581	53.305	58.121	60.163	59.907	60.199	66.531	66.573	80.621	146.989	346.768	767.681	106.223	240.545	69,4
2015	34.615	55.331	83.302	91.602	81.542	86.158	83.836	82.577	64.025	64.255	84.601	156.173	516.386	968.017	169.943	346.443	67,1
2016	32.713	52.825	82.948	84.887	93.904	91.540	58.533	71.556	67.593	83.000	122.309	141.912	497.350	983.720	157.337	340.013	68,4
2017	35.323	46.965	73.802	75.988	85.422	83.658	82.297	72.536	71.352	91.752	100.859	136.240	483.455	956.194	173.698	309.757	64,1
2018	35.076	47.009	76.345	71.126	72.755	51.037	52.734	34.346	23.028	21.571	58.204	77.706	406.082	620.937	152.578	253.504	62,4
2019	14.373	24.875	49.221	30.971	33.016	42.688	17.927	26.246	41.992	49.075	58.176	90.500	213.071	479.060	96.931	116.140	54,5
2020	27.273	47.122	50.008	26.457	32.235	70.973	87.401	61.533	90.619	94.733	80.141	104.293	341.469	772.788	149.220	192.249	56,3
2021	43.728	58.504	96.428	61.488	54.734	79.819	47.849	58.454	57.141	56.746	60.216	62.243	442.550	737.350	189.184	253.366	57,3
2022	38.131	49.652	64.267	60.035	65.167	80.652	52.206	48.336	62.084	65.222	82.311	115.220	410.110	783.283	180.326	229.784	56,0
2023	50.894	81.148	103.929	97.679	111.356	111.363	112.459						668.828	668.828	247.727	421.101	63,0



Aylar / Months	10 Yıl Ort / 10 Years Avr.	2023	%
1	8.169	13.606	66,6
2	11.034	22.241	101,6
3	15.697	24.703	57,4
4	14.055	20.281	44,3
5	14.278	24.138	69,1
6	14.938	21.028	40,8
7	13.561	26.543	95,7
TOPLAM / TOTAL	91.733	152.540	66,3

Yıl / Year	1	2	3	4	5	6	7	8	9	10	11	12	1-7 Toplam / Total	Toplam / Total	1-7 Yerli / Local	1-7 İthal / Import	İthal Oran / Import %
2013	9.688	11.493	16.989	16.576	19.085	15.806	15.884	13.432	15.038	11.029	15.184	28.519	105.521	188.723	55.090	50.431	47,8
2014	8.302	7.854	9.769	10.536	11.742	12.885	13.305	15.068	17.269	15.759	20.926	36.935	74.393	180.350	37.477	36.916	49,6
2015	10.117	14.514	21.626	21.391	18.664	18.392	19.618	20.824	16.937	16.301	22.204	41.833	124.322	242.421	69.342	54.980	44,2
2016	9.355	12.237	18.973	19.269	20.072	20.429	12.967	17.579	16.253	19.254	26.526	33.868	113.302	226.782	59.825	53.477	47,2
2017	9.634	12.307	18.186	17.990	19.623	17.494	19.913	17.646	17.929	21.264	24.903	36.546	115.147	233.435	58.994	56.153	48,8
2018	8.465	11.108	16.547	16.018	15.528	9.812	10.710	7.370	5.433	4.762	12.000	16.863	88.188	134.616	45.400	42.788	48,5
2019	3.394	5.670	10.593	6.555	5.890	6.664	2.529	4.702	6.684	9.079	10.373	19.671	41.295	91.804	21.799	19.496	47,2
2020	5.257	9.395	10.121	4.632	7.162	13.906	17.974	17.161	19.323	18.392	15.784	23.572	68.447	162.679	41.952	26.495	38,7
2021	8.370	13.755	20.071	13.113	11.596	17.471	11.538	13.698	13.733	16.234	17.234	18.684	95.914	175.497	51.141	44.773	46,7
2022	9.111	12.011	14.094	14.471	13.417	16.518	11.175	13.106	17.403	17.782	23.089	28.446	90.797	190.623	54.147	36.650	40,4
2023	13.606	22.241	24.703	20.281	24.138	21.028	26.543						152.540	152.540	79.293	73.247	48,0



Aylar / Months	10 Yıl Ort. / 10 Years Avr.	2023	%
1	3.083	5.533	79,5
2	3.701	5.569	50,5
3	5.145	7.959	54,7
4	5.014	6.433	28,3
5	5.055	8.511	68,4
6	4.576	6.260	36,8
TOPLAM / TOTAL	26.574	40.265	51,5

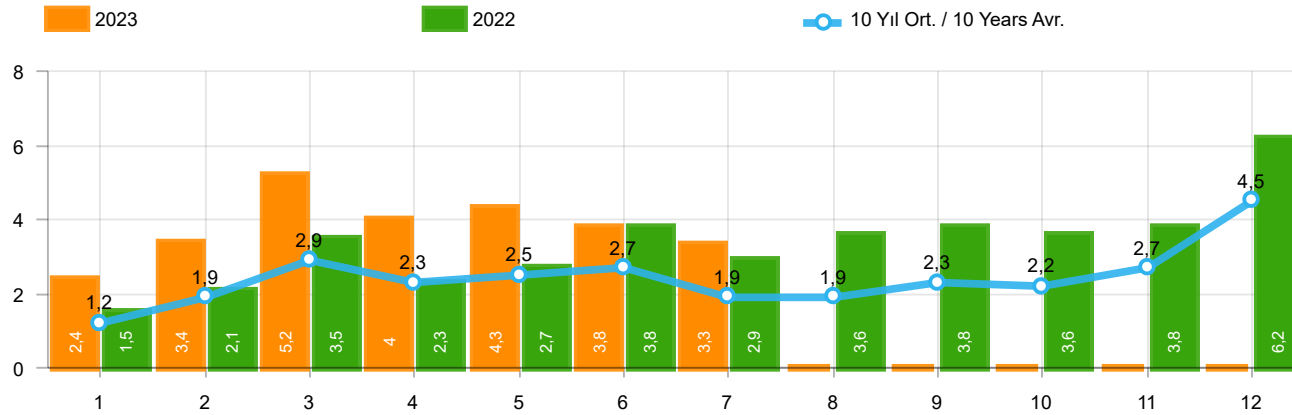
Yıl / Year	1	2	3	4	5	6	7	8	9	10	11	12	1-6 Toplam / Total	Toplam / Total
2013	2.161	2.432	4.005	4.585	5.616	3.136	4.574	3.408	4.935	4.762	5.781	6.891	21.935	52.286
2014	2.169	3.512	4.476	4.905	5.094	5.028	4.233	4.920	5.619	5.743	6.250	7.409	25.184	59.358
2015	3.124	3.984	5.460	6.383	6.078	5.748	4.677	5.044	4.765	7.049	6.898	7.564	30.777	66.774
2016	3.739	4.731	7.067	6.546	6.575	5.543	3.833	5.134	4.945	7.372	7.090	7.603	34.201	70.178
2017	3.974	4.964	6.773	6.780	7.057	5.356	5.003	4.396	6.064	7.734	7.457	7.351	34.904	72.909
2018	4.362	4.179	5.925	5.216	4.584	3.146	3.654	2.587	3.541	3.698	3.578	3.886	27.412	48.356
2019	1.311	1.401	2.143	2.126	2.229	1.538	2.039	1.579	2.284	2.828	3.037	3.782	10.748	26.297
2020	2.425	2.778	3.771	2.606	3.244	4.173	3.727	3.974	4.928	5.466	5.831	6.221	18.997	49.144
2021	4.411	5.395	6.845	5.581	4.200	5.571	3.846	3.093	6.100	5.351	6.901	6.776	32.003	64.070
2022	3.152	3.636	4.988	5.408	5.873	6.520	3.985	4.740	6.265	6.542	7.514	8.319	29.577	66.942
2023	5.533	5.569	7.959	6.433	8.511	6.260	-	-	-	-	-	-	40.265	40.265

Kaynak: TÜİK trafik kayıtları.

Rakamlar, son iki model yılına ait traktör tescillerinden oluşmaktadır.

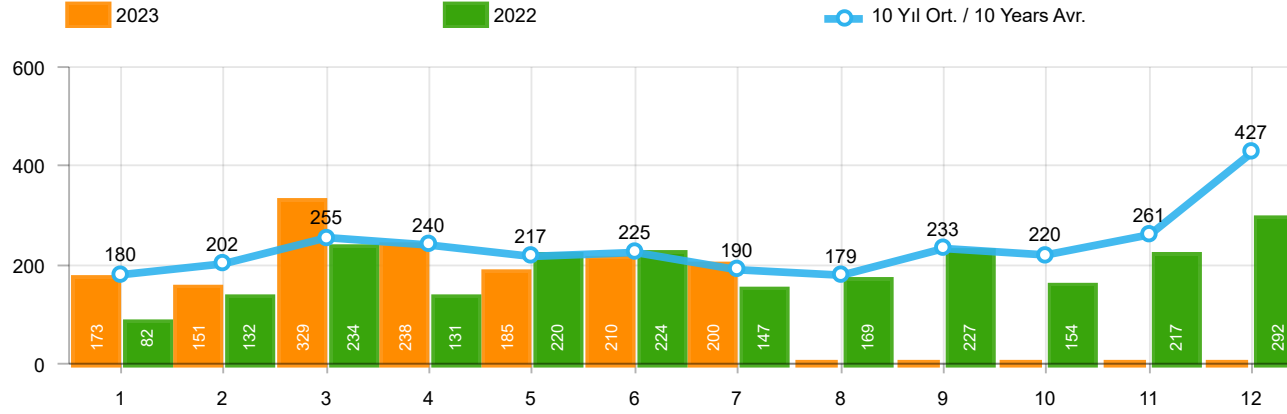
Source: Turkish Statistical Institute – Traffic registrations

Data represents the last two model year's farm tractors registration figures



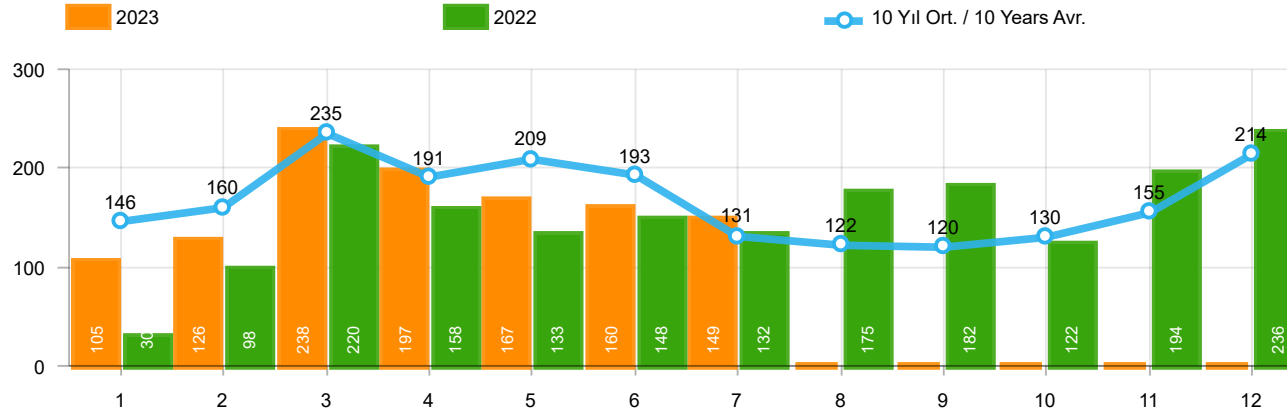
Aylar / Months	10 Yıl Ort. / 10 Years Avr.	2023	%
1	1.244	2.406	93,3
2	1.885	3.356	78,0
3	2.865	5.162	80,2
4	2.293	3.950	72,3
5	2.460	4.321	75,6
6	2.650	3.820	44,1
7	1.945	3.255	67,3
TOPLAM / TOTAL	15.343	26.270	71,2

Yıl / Year	1	2	3	4	5	6	7	8	9	10	11	12	1-7 Toplam / Total	Toplam / Total	1-7 Yerli / Local	1-7 İthal / Import	İthal Oran / Import %
2013	1.484	2.113	3.343	2.925	3.504	3.186	2.777	2.103	2.875	2.086	3.631	5.444	19.332	35.471	13.465	5.867	30,3
2014	1.522	2.065	3.094	3.224	3.727	3.726	2.578	2.783	3.708	2.858	3.384	6.869	19.936	39.538	14.616	5.320	26,7
2015	2.215	3.346	5.699	3.729	3.600	4.253	2.922	2.211	2.687	2.266	3.146	7.307	25.764	43.381	18.207	7.557	29,3
2016	1.167	1.648	2.515	2.319	2.711	2.623	984	1.796	1.438	2.238	2.485	3.127	13.967	25.051	9.526	4.441	31,8
2017	931	1.290	1.982	1.888	2.184	1.891	1.974	1.860	2.284	2.188	2.487	4.438	12.140	25.397	8.380	3.760	31,0
2018	1.237	1.552	2.630	2.328	1.909	1.272	1.235	603	653	488	905	1.695	12.163	16.507	7.180	4.983	41,0
2019	342	579	1.255	842	728	981	435	497	854	1.047	1.100	2.087	5.162	10.747	3.163	1.999	38,7
2020	682	1.475	1.290	628	921	1.570	1.809	1.835	2.660	2.239	2.537	3.358	8.375	21.004	5.373	3.002	35,8
2021	1.366	2.633	3.319	2.788	2.617	3.238	1.799	1.942	2.377	3.067	3.549	4.045	17.760	32.740	10.504	7.256	40,9
2022	1.498	2.148	3.520	2.260	2.701	3.764	2.939	3.617	3.811	3.574	3.777	6.214	18.830	39.823	12.013	6.817	36,2
2023	2.406	3.356	5.162	3.950	4.321	3.820	3.255						26.270	26.270	16.812	9.458	36,0



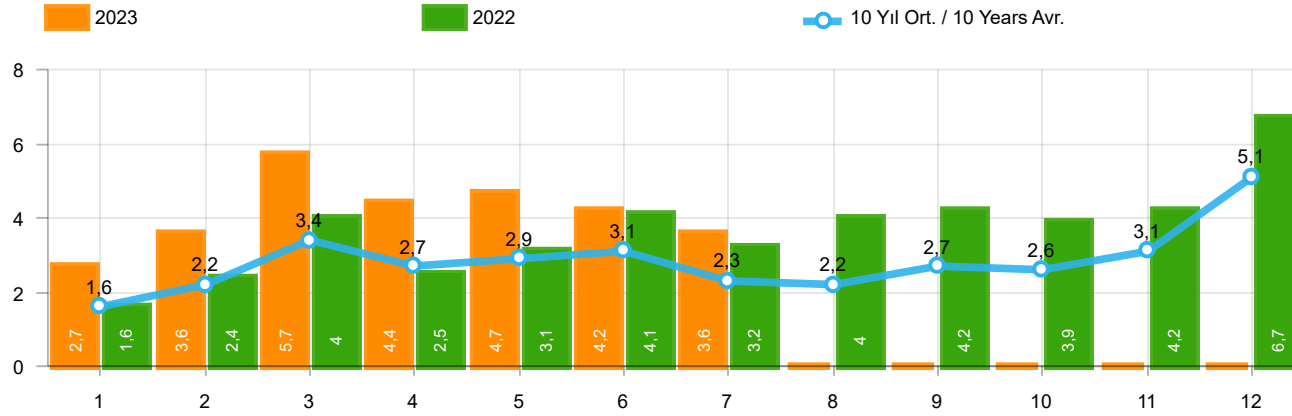
Aylar / Months	10 Yıl Ort / 10 Years Avr.	2023	%
1	180	173	-3,8
2	202	151	-25,1
3	255	329	28,8
4	240	238	-,7
5	217	185	-14,7
6	225	210	-6,6
7	190	200	5,4
TOPLAM / TOTAL	1.508	1.486	-1,5

Yıl / Year	1	2	3	4	5	6	7	8	9	10	11	12	1-7 Toplam / Total	Toplam / Total
2013	191	268	289	276	283	241	367	235	305	392	415	697	1.915	3.959
2014	360	394	384	333	294	258	216	229	395	220	266	653	2.239	4.002
2015	280	322	451	561	372	405	389	253	316	394	325	621	2.780	4.689
2016	309	158	251	302	261	196	139	220	241	230	354	431	1.616	3.092
2017	212	211	227	231	272	156	250	235	318	268	317	594	1.559	3.291
2018	134	142	410	296	207	315	180	146	160	155	184	425	1.684	2.754
2019	57	61	63	96	106	189	55	44	138	138	257	244	627	1.448
2020	104	221	128	35	97	134	111	123	77	71	82	137	830	1.320
2021	70	108	117	135	58	131	44	139	153	178	188	172	663	1.493
2022	82	132	234	131	220	224	147	169	227	154	217	292	1.170	2.229
2023	173	151	329	238	185	210	200						1.486	1.486



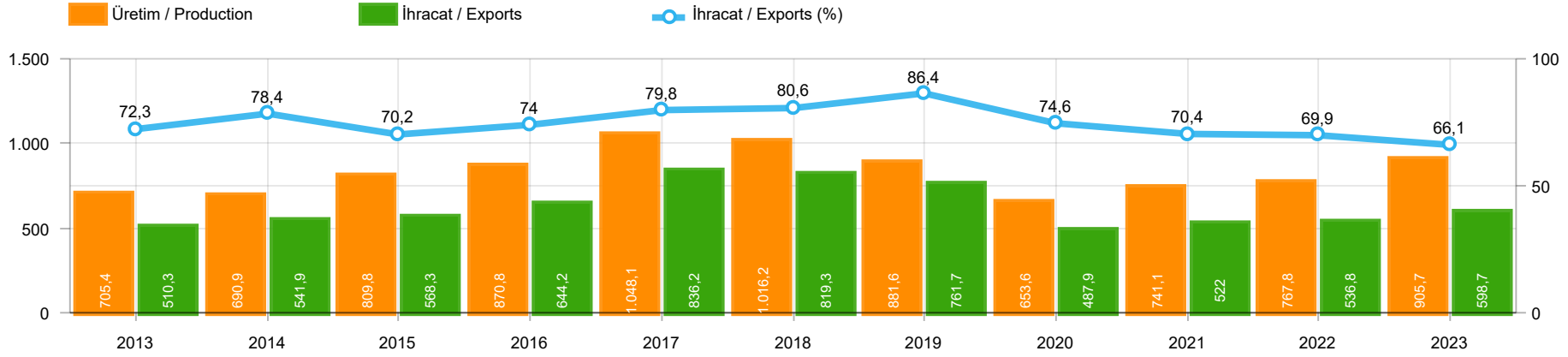
Aylar / Months	10 Yıl Ort / 10 Years Avr.	2023	%
1	146	105	-27,8
2	160	126	-21,3
3	235	238	1,5
4	191	197	3,2
5	209	167	-20,0
6	193	160	-16,9
7	131	149	13,4
TOPLAM / TOTAL	1.264	1.142	-9,6

Yıl / Year	1	2	3	4	5	6	7	8	9	10	11	12	1-7 Toplam / Total	Toplam / Total	1-7 Yerli / Local	1-7 İthal / Import	İthal Oran / Import %
2013	365	445	537	489	580	520	412	281	245	198	123	189	3.348	4.384	3.329	19	0,6
2014	199	179	253	251	305	148	69	92	130	91	97	332	1.404	2.146	1.261	143	10,2
2015	146	222	313	290	290	255	211	203	153	171	359	363	1.727	2.976	1.661	66	3,8
2016	180	209	218	240	214	307	76	82	141	198	314	236	1.444	2.415	1.413	31	2,1
2017	174	119	167	124	188	115	206	187	92	231	109	235	1.093	1.947	1.081	12	1,1
2018	78	65	215	136	125	164	45	42	74	107	113	188	828	1.352	817	11	1,3
2019	75	54	112	35	97	41	25	45	84	28	42	54	439	692	439	-	-
2020	64	130	128	45	55	112	98	79	50	82	64	131	632	1.038	632	-	-
2021	144	80	182	140	101	116	40	38	46	73	134	173	803	1.267	803	-	-
2022	30	98	220	158	133	148	132	175	182	122	194	236	919	1.828	919	-	-
2023	105	126	238	197	167	160	149						1.142	1.142	1.142	-	-



Aylar / Months	10 Yıl Ort / 10 Years Avr.	2023	%
1	1.570	2.684	71,0
2	2.247	3.633	61,7
3	3.355	5.729	70,8
4	2.724	4.385	61,0
5	2.886	4.673	61,9
6	3.068	4.190	36,6
7	2.266	3.604	59,0
TOPLAM / TOTAL	18.115	28.898	59,5

Yıl / Year	1	2	3	4	5	6	7	8	9	10	11	12	1-7 Toplam / Total	Toplam / Total	1-7 Yerli / Local	1-7 İthal / Import	İthal Oran / Import %
2013	2.040	2.826	4.169	3.690	4.367	3.947	3.556	2.619	3.425	2.676	4.169	6.330	24.595	43.814	18.709	5.886	23,9
2014	2.081	2.638	3.731	3.808	4.326	4.132	2.863	3.104	4.233	3.169	3.747	7.854	23.579	45.686	18.116	5.463	23,2
2015	2.641	3.890	6.463	4.580	4.262	4.913	3.522	2.667	3.156	2.831	3.830	8.291	30.271	51.046	22.648	7.623	25,2
2016	1.656	2.015	2.984	2.861	3.186	3.126	1.199	2.098	1.820	2.666	3.153	3.794	17.027	30.558	12.555	4.472	26,3
2017	1.317	1.620	2.376	2.243	2.644	2.162	2.430	2.282	2.694	2.687	2.913	5.267	14.792	30.635	11.020	3.772	25,5
2018	1.449	1.759	3.255	2.760	2.241	1.751	1.460	791	887	750	1.202	2.308	14.675	20.613	9.681	4.994	34,0
2019	474	694	1.430	973	931	1.211	515	586	1.076	1.213	1.399	2.385	6.228	12.887	4.229	1.999	32,1
2020	850	1.826	1.546	708	1.073	1.816	2.018	2.037	2.787	2.392	2.683	3.626	9.837	23.362	6.835	3.002	30,5
2021	1.580	2.821	3.618	3.063	2.776	3.485	1.883	2.119	2.576	3.318	3.871	4.390	19.226	35.500	11.970	7.256	37,7
2022	1.610	2.378	3.974	2.549	3.054	4.136	3.218	3.961	4.220	3.850	4.188	6.742	20.919	43.880	14.102	6.817	32,6
2023	2.684	3.633	5.729	4.385	4.673	4.190	3.604						28.898	28.898	19.440	9.458	32,7



	2013	2014	2015	2016	2017	2018	2019	2020	2021	2022	2023
İhracat/Export	510.324	541.857	568.275	644.221	836.175	819.270	761.663	487.868	521.967	536.754	598.667
Üretim/Production	705.371	690.902	809.832	870.818	1.048.131	1.016.213	881.552	653.594	741.094	767.843	905.666
İhracat/Exports (%)	72,3	78,4	70,2	74	79,8	80,6	86,4	74,6	70,4	69,9	66,1

Taşıt Araçları İhracatı (2021 - 2023)
Motor Vehicle Exports (2021 - 2023)

SEKTÖR / SECTOR	2021	2022	1/7-2022	1/7-2023	2023/2022 %
OTOMOBİL / Pass.Car	565.370	571.218	298.373	375.670	25,9
OTOMOBİL TOPLAM / Pass. Car Total	565.370	571.218	298.373	375.670	25,9
KAMYON / Truck	17.293	20.123	10.608	11.790	11,1
KAMYONET / Pick Up	310.874	335.148	192.662	169.607	-12,0
OTOBÜS / Bus	4.750	6.579	2.893	4.822	66,7
MINİBÜS / Minibus	37.741	36.016	21.614	24.055	11,3
MİDİBÜS / Midibus	987	1.040	491	851	73,3
TİCARİ ARAÇLAR TOPLAM / Commercial Vehicle Total	371.645	398.906	228.268	211.125	-7,5
TAŞIT ARAÇLARI TOPLAM / Motor Vehicles Total	937.015	970.124	526.641	586.795	11,4
TRAKTÖR / F.Tractor	17.038	18.154	10.113	11.872	17,4
TRAKTÖR TOPLAM / F.Tractor Total	17.038	18.154	10.113	11.872	17,4
GENEL TOPLAM / GRAND TOTAL	954.053	988.278	536.754	598.667	11,5

Üretici Bazında İhracat (adet)
Exports by Manufacturer (unit)

Üreticiler / Manufacturers	2021	2022	1-7 / 2022	1-7 / 2023
A.I.O.S.	1.100	911	366	587
FORD OTOSAN	287.609	297.828	174.690	184.473
HATTAT TRAKTÖR	862	1.059	698	383
HYUNDAI ASSAN	138.739	176.664	107.832	122.247
KARSAN	2.135	301	106	136
M. BENZ TÜRK	13.911	15.674	8.172	9.472
MAN TÜRKİYE	1.573	1.786	894	1.433
OTOKAR	749	1.506	507	1.152
OYAK RENAULT	187.923	176.844	62.288	125.654
TEMSA	599	587	243	572
TOFAŞ	112.465	121.477	67.438	32.989
TOYOTA	187.907	176.546	104.105	108.080
TÜRK TRAKTÖR	16.176	17.095	9.415	11.489
GENEL TOPLAM / Grand Total	951.748	988.278	536.754	598.667

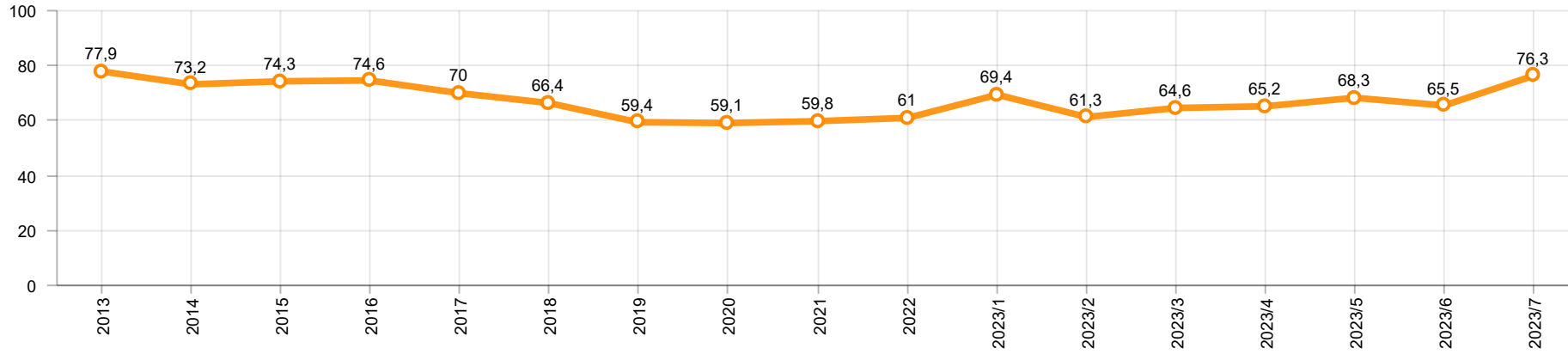
Otomotiv Ana ve Yan Sanayii İhracatı (ABD \$)
CBU and CKD Exports - \$

Sektör / Sector	2021	2022	OCAK - TEMMUZ / January - July 2022	OCAK - TEMMUZ / January - July 2023	2023 / 2022 %
Toplam Yan Sanayi / Total Component Industry	11.824.049.653,01	12.831.129.592,62	7.317.869.690,75	8.215.140.145,1	12,3
İç ve Dış Lastik / Tyres	1.630.367.018,49	1.767.320.167	1.037.212.712,01	1.042.119.587,86	0,5
Emniyet Camı / Safety Glasses	203.192.140,55	234.466.834,44	136.136.194,25	151.696.843	11,4
Motor / Engine	296.695.616,13	233.029.231,53	151.939.337,35	142.933.328,06	-5,9
Akümülatör / Batteries	509.199.445,03	547.895.439,61	299.096.021,36	261.553.455	-12,6
Diğer Aksam ve Parça / Spare Parts&Components	9.184.595.432,81	10.048.417.920,04	5.693.485.425,78	6.616.836.931,18	16,2
Toplam Ana Sanayi / Total Vehicle Industry	18.048.636.689,96	18.677.239.435,86	10.237.535.396,58	12.277.792.417,27	19,9
Otobüs / Bus	1.014.817.251,08	1.201.795.118,6	527.684.566,57	890.197.043,66	68,7
Midibüs-Minibüs / Midibus-Minibus	193.913.261,22	163.044.669,04	99.628.012,32	165.848.173,91	66,5
Otomobil / P.Cars	9.272.072.907,39	9.069.547.725,1	4.998.979.765,68	6.215.448.635,88	24,3
Kamyon-Kamyonet / Truck-Pick Up&Van	5.420.090.951,32	5.633.803.021,79	3.201.385.050,83	3.370.687.966,74	5,3
Römork ve Yarı Römork / Trailer-Semi Trailer	609.758.049,6	763.209.294,39	413.476.226,85	440.195.477,32	6,5
Çekici / Tractor	1.018.262.590,07	1.266.205.170,15	678.608.479,48	837.661.384,47	23,4
Tarım Traktörü / Farm Tractor	519.721.679,28	579.634.436,79	317.773.294,85	357.753.735,29	12,6
Toplam / Total	29.872.686.342,97	31.508.369.028,48	17.555.405.087,33	20.492.932.562,37	16,7

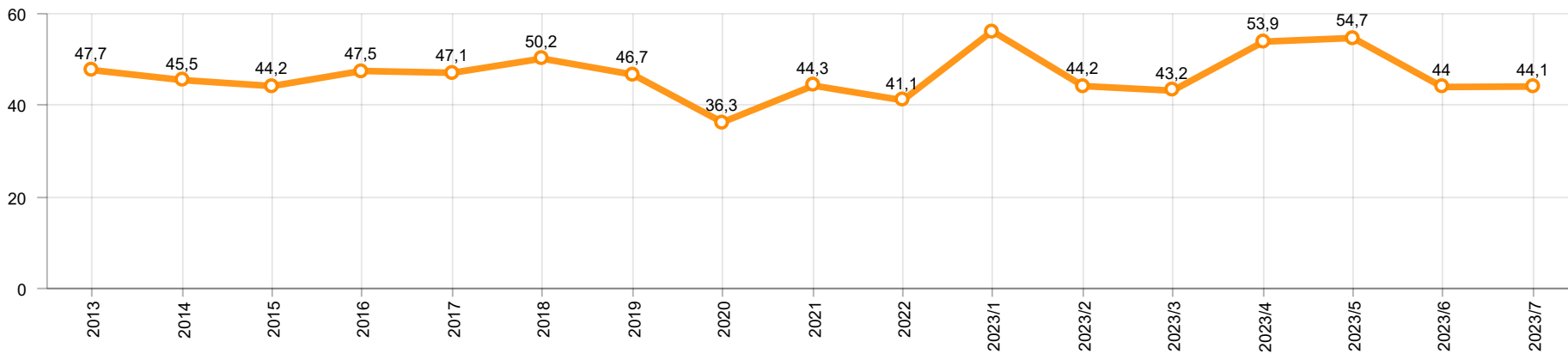
Kaynak: Uludağ İhracatçı Birlikleri . ÜİB tarafından OSD için özel olarak analiz edilen Otomotiv İhracatı kapsamında; ÜİB Türkiye Genel Otomotiv Endüstrisi sınıflandırmasına kıyasla “Römork ve Yarı Römork” , “Tarım Traktörü” verileri dahil edilmekte; “Kullanılmış Araçlar” ,”İki Tekerlekli Taşıtlar” , “Demiryolu Taşıtları” hariç tutulmaktadır.

Source: Uludağ Exporters Association – Special Analyze for OSD.Compared to Turkish General Automotive Industry classification, this special analyze includes; farms tractors, trailers and semi-trailers, does not include; used vehicles, two-wheeled vehicles and railway vehicles

Otomobil Pazarında İthalatın Payı (%)
Import Share in P.Car Market (%)



Hafif Ticari Araçlar Pazarında İthalatın Payı (%)
Import Share in LCV Market (%)



Araç Tipleri / Vehicle Types	1	2	3	4	5	6	7	8	9	10	11	12	Toplam / Total
OTOMOBİL - Pass.Car	51.122	46.473	59.168	48.634	58.456	61.621	50.196						375.670
KAMYON - H. Truck	1.294	1.789	1.757	1.222	1.834	1.701	2.026						11.623
K.KAMYON - L. Truck	25	18	19	1	33	60	11						167
KAMYONET - Pick Up	23.167	26.083	29.741	21.455	21.723	23.148	24.290						169.607
OTOBÜS - Bus	479	584	754	703	788	758	756						4.822
MİNİBÜS - Minibus	3.212	3.734	4.144	3.268	3.070	3.174	3.453						24.055
MİDİBÜS - Midibus	82	82	118	123	115	188	143						851
TİCARİ ARAÇLAR TOPLAMI - CV Total	28.259	32.290	36.533	26.772	27.563	29.029	30.679						211.125
TAŞIT ARAÇLARI TOPLAMI - MV Total	79.381	78.763	95.701	75.406	86.019	90.650	80.875						586.795
TRAKTÖR - F.Tractor	1.718	1.698	1.813	1.681	1.680	1.605	1.677						11.872
GENEL TOPLAM - Grand Total	81.099	80.461	97.514	77.087	87.699	92.255	82.552						598.667

Otomobil / P.Car

Firmalar / Firms	1	2	3	4	5	6	7	8	9	10	11	12	Toplam / Total
FORD OTOSAN	-	-	-	-	-	-	-	-	-	-	-	-	-
HYUNDAI ASSAN	20.026	16.310	18.880	16.060	18.470	14.304	18.197	-	-	-	-	-	122.247
OYAK RENAULT	9.728	18.194	20.350	14.713	20.315	28.216	14.138	-	-	-	-	-	125.654
TOFAŞ	507	1.646	2.954	3.171	3.998	3.393	4.020	-	-	-	-	-	19.689
TOYOTA	20.861	10.323	16.984	14.690	15.673	15.708	13.841	-	-	-	-	-	108.080
TOPLAM - Total	51.122	46.473	59.168	48.634	58.456	61.621	50.196	-	-	-	-	-	375.670

Kamyonet / Pick-up

Firmalar / Firms	1	2	3	4	5	6	7	8	9	10	11	12	Toplam / Total
A.I.O.S.	-	-	-	-	-	-	-	-	-	-	-	-	-
FORD OTOSAN	20.603	23.319	26.833	20.387	20.049	22.480	22.594	-	-	-	-	-	156.265
KARSAN	-	-	-	-	-	-	-	-	-	-	-	-	-
OTOKAR	-	-	-	-	22	20	-	-	-	-	-	-	42
TOFAŞ	2.564	2.764	2.908	1.068	1.652	648	1.696	-	-	-	-	-	13.300
TOPLAM - Total	23.167	26.083	29.741	21.455	21.723	23.148	24.290	-	-	-	-	-	169.607

Minibüs / Minibus

Firmalar / Firms	1	2	3	4	5	6	7	8	9	10	11	12	Toplam / Total
FORD OTOSAN	3.212	3.734	4.138	3.268	3.070	3.160	3.451	-	-	-	-	-	24.033
KARSAN	-	-	6	-	-	14	2	-	-	-	-	-	22
TOPLAM - Total	3.212	3.734	4.144	3.268	3.070	3.174	3.453	-	-	-	-	-	24.055

Kamyon / Truck

Firmalar / Firms	1	2	3	4	5	6	7	8	9	10	11	12	Toplam / Total
A.I.O.S.	24	18	2	-	19	48	-	-	-	-	-	-	111
FORD OTOSAN	459	619	732	548	611	473	733	-	-	-	-	-	4.175
KARSAN	-	-	-	-	-	-	-	-	-	-	-	-	-
M. BENZ TÜRK	835	1.170	1.025	674	1.223	1.228	1.293	-	-	-	-	-	7.448
OTOKAR	1	-	-	1	6	2	6	-	-	-	-	-	16
TEMSA	-	-	17	-	8	10	5	-	-	-	-	-	40
TOPLAM - Total	1.319	1.807	1.776	1.223	1.867	1.761	2.037	-	-	-	-	-	11.790

Midibüs / Midibus

Firmalar / Firms	1	2	3	4	5	6	7	8	9	10	11	12	Toplam / Total
A.I.O.S.	39	35	54	29	39	88	38	-	-	-	-	-	322
KARSAN	-	24	19	2	5	15	9	-	-	-	-	-	74
OTOKAR	39	12	11	67	53	40	57	-	-	-	-	-	279
TEMSA	4	11	34	25	18	45	39	-	-	-	-	-	176
TOPLAM - Total	82	82	118	123	115	188	143	-	-	-	-	-	851

Otobüs / Bus

Firmalar / Firms	1	2	3	4	5	6	7	8	9	10	11	12	Toplam / Total
A.I.O.S.	11	21	42	20	22	22	16	-	-	-	-	-	154
KARSAN	-	2	18	-	5	15	-	-	-	-	-	-	40
M. BENZ TÜRK	285	278	320	252	316	229	344	-	-	-	-	-	2.024
MAN TÜRKİYE	86	133	218	268	266	311	151	-	-	-	-	-	1.433
OTOKAR	83	137	96	90	113	138	158	-	-	-	-	-	815
TEMSA	14	13	60	73	66	43	87	-	-	-	-	-	356
TOPLAM - Total	479	584	754	703	788	758	756	-	-	-	-	-	4.822

Traktör / F.Tractor

Firmalar / Firms	1	2	3	4	5	6	7	8	9	10	11	12	Toplam / Total
HATTAT TRAKTÖR	80	44	47	80	50	43	39	-	-	-	-	-	383
TÜRK TRAKTÖR	1.638	1.654	1.766	1.601	1.630	1.562	1.638	-	-	-	-	-	11.489
TOPLAM - Total	1.718	1.698	1.813	1.681	1.680	1.605	1.677	-	-	-	-	-	11.872

Firmalar / Firms	2022 Toplam / Total	1	2	3	4	5	6	7	8	9	10	11	12	Toplam / Total
Alfa Romeo	820	138	235	204	131	428	163	297	-	-	-	-	-	1.596
Aston Martin	28	3	-	2	1	5	3	2	-	-	-	-	-	16
Audi	14.554	848	1.662	2.457	2.044	2.006	1.834	2.008	-	-	-	-	-	12.859
Bentley	15	3	2	5	-	1	5	4	-	-	-	-	-	20
BMW	18.056	580	1.692	2.645	2.123	2.157	1.343	1.965	-	-	-	-	-	12.505
Chery	-	-	-	629	1.401	3.509	4.218	5.030	-	-	-	-	-	14.787
Citroen	21.913	1.412	2.198	3.305	2.816	5.607	6.621	3.207	-	-	-	-	-	25.166
CUPRA	2.792	112	161	1.084	715	451	1.106	1.086	-	-	-	-	-	4.715
Dacia	36.000	5.074	3.312	3.716	3.884	2.837	2.602	6.235	-	-	-	-	-	27.660
DFSK	352	48	69	109	12	35	8	1	-	-	-	-	-	282
DS	1.829	106	287	324	434	433	553	570	-	-	-	-	-	2.707
Ferrari	22	-	-	5	3	2	2	2	-	-	-	-	-	14
Fiat	276	23	7	220	54	125	180	92	-	-	-	-	-	701
Ford	8.421	558	1.510	2.639	2.610	3.121	2.585	1.970	-	-	-	-	-	14.993
Honda	21.429	1.196	1.355	1.681	1.380	2.228	1.598	1.618	-	-	-	-	-	11.056
Hyundai	14.198	804	656	906	1.221	610	1.344	990	-	-	-	-	-	6.531
Jaguar	90	1	4	16	9	32	6	2	-	-	-	-	-	70
Jeep	2.422	150	160	158	346	325	240	394	-	-	-	-	-	1.773
Kia	18.462	733	1.439	1.737	1.667	1.890	1.996	1.623	-	-	-	-	-	11.085
Lamborghini	14	-	1	2	2	-	3	2	-	-	-	-	-	10
Land Rover	1.111	185	126	192	154	192	51	172	-	-	-	-	-	1.072
LEAPMOTOR	-	-	-	-	80	50	70	20	-	-	-	-	-	220
Lexus	336	15	5	29	86	57	67	43	-	-	-	-	-	302
Maserati	314	7	14	85	83	86	32	65	-	-	-	-	-	372
Mazda	181	10	16	20	17	20	20	20	-	-	-	-	-	123
Mercedes-Benz	18.661	573	950	1.448	2.860	1.256	2.206	1.438	-	-	-	-	-	10.731
MG	1.627	420	403	570	641	790	450	1.820	-	-	-	-	-	5.094
Mini	1.385	61	109	262	71	315	171	219	-	-	-	-	-	1.208
Mitsubishi	583	2	35	30	31	24	23	19	-	-	-	-	-	164
Nissan	9.337	728	750	607	2.762	1.066	884	1.460	-	-	-	-	-	8.257
Opel	30.378	1.476	3.519	4.706	5.107	8.798	8.393	6.256	-	-	-	-	-	38.255
Peugeot	23.345	1.628	5.065	6.874	4.659	6.855	5.645	6.659	-	-	-	-	-	37.385
Porsche	668	184	98	95	50	96	102	69	-	-	-	-	-	694
Renault	17.713	1.057	1.618	455	851	1.070	3.009	2.269	-	-	-	-	-	10.329
Seat	6.142	368	395	1.030	992	831	763	918	-	-	-	-	-	5.297
Skoda	19.464	2.740	2.971	4.234	2.846	2.759	2.259	2.579	-	-	-	-	-	20.388
SKYWELL	-	-	90	95	127	50	209	50	-	-	-	-	-	621
Ssangyong	804	17	-	-	65	16	31	47	-	-	-	-	-	176
Subaru	622	72	113	125	72	163	134	35	-	-	-	-	-	714
Suzuki	3.601	137	636	170	244	227	496	993	-	-	-	-	-	2.903
Toyota	5.767	1.003	475	954	485	896	1.370	1.569	-	-	-	-	-	6.752
Volkswagen	49.695	3.049	3.235	6.176	6.326	7.512	5.023	10.500	-	-	-	-	-	41.821
Volvo	8.228	368	732	1.150	964	603	1.340	1.273	-	-	-	-	-	6.430
GENEL TOPLAM - Grand Total	361.655	25.889	36.105	51.151	50.426	59.534	59.158	65.591	-	-	-	-	-	347.854

Firmalar / Firms	2022 Toplam / Total	1	2	3	4	5	6	7	8	9	10	11	12	Toplam / Total
Citroen	6.918	957	1.360	2.043	1.397	2.921	1.393	1.089	-	-	-	-	-	11.160
Fiat	2.561	165	487	150	822	401	1.593	1.385	-	-	-	-	-	5.003
Ford	1.323	111	58	141	32	29	124	238	-	-	-	-	-	733
Hyundai	2.935	248	188	513	555	513	435	494	-	-	-	-	-	2.946
Isuzu	1.317	64	91	99	218	246	116	191	-	-	-	-	-	1.025
Iveco	2.966	80	177	94	311	333	289	91	-	-	-	-	-	1.375
Kia	1.905	-	117	188	94	130	152	205	-	-	-	-	-	886
Land Rover	419	2	83	19	-	52	93	52	-	-	-	-	-	301
Mercedes-Benz	6.327	598	653	649	963	117	660	486	-	-	-	-	-	4.126
Mitsubishi	1.437	93	69	-	-	-	-	-	-	-	-	-	-	162
Opel	6.347	408	1.202	1.104	1.416	1.873	716	1.072	-	-	-	-	-	7.791
Peugeot	9.321	1.157	1.487	1.983	1.650	3.099	790	1.489	-	-	-	-	-	11.655
Renault	11.433	551	1.557	1.273	1.476	999	944	2.334	-	-	-	-	-	9.134
Ssangyong	489	114	69	77	122	104	92	80	-	-	-	-	-	658
Toyota	11.661	1.067	776	806	883	932	932	1.107	-	-	-	-	-	6.503
Volkswagen	10.646	2.027	1.466	1.527	1.002	1.452	923	1.392	-	-	-	-	-	9.789
GENEL TOPLAM - Grand Total	78.400	7.642	9.840	10.666	10.941	13.201	9.252	11.705	-	-	-	-	-	73.247