



OTOMOTİV SANAYİİ DERNEĐİ
AUTOMOTIVE MANUFACTURERS ASSOCIATION

OTOMOTİV SEKTÖRÜ
AYLIK DEĐERLENDİRME RAPORU
AĐUSTOS 2023

AUTOMOTIVE INDUSTRY MONTHLY REPORT
August 2023

OSD "OICA" Üyesidir © O I C A OSD is a Member of "OICA"

	8 - 2022	8 - 2023	%	1 - 8 / 2022	1 - 8 / 2023	%	9/2021 - 8/2022	9/2022 - 8/2023	%
Otomobil Üretimi/P.Cars Production	62.560	49.300	-21,2	496.302	599.915	20,9	767.364	914.502	19,2
Toplam Üretim/Total Production	92.625	73.020	-21,2	833.158	943.609	13,3	1.294.630	1.463.099	13,0
Otomobil Pazarı/P.Cars Market	35.230	66.131	87,7	354.543	582.419	64,3	525.004	820.536	56,3
Toplam Pazar/Total Market	52.297	90.381	72,8	483.326	788.197	63,1	733.827	1.132.034	54,3
Otomobil İthalatı/P.Cars Import	23.666	51.645	118,2	216.800	399.499	84,3	319.326	544.354	70,5
Toplam İthalat/Total Import	31.349	66.549	112,3	267.950	497.182	85,6	400.548	683.391	70,6
Otomobil İhracatı/P.Cars Export	41.028	50.264	22,5	339.401	425.934	25,5	539.064	657.751	22,0
Toplam İhracat/Total Export	64.513	69.950	8,4	591.154	656.750	11,1	932.763	1.035.720	11,0
Otomobil İhracatı(\$)/P.Cars Export (\$)	612.559.857,13	933.418.319,99	52,4	5.611.539.623	7.148.791.802	27,4	8.882.021.096	10.606.798.115	19,4
Toplam İhracat(\$)/Total Export (\$)*	2.306.071.159,85	2.808.138.842,16	21,8	19.861.428.797	23.298.009.310	17,3	30.575.131.485	34.937.021.646	14,3

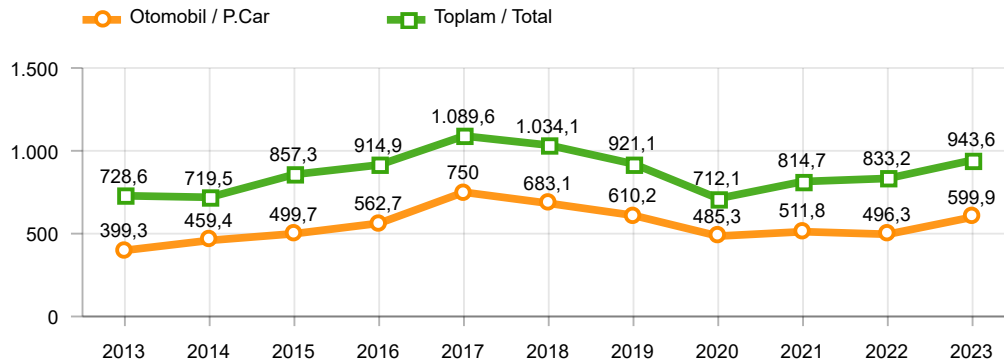
Parametreler/Parameters	8 - 2022	8 - 2023	%	1 - 8 / 2022	1 - 8 / 2023	%	9/2021 - 8/2022	9/2022 - 8/2023	%
ÜFE / PPI	2,4	5,9	-	74,1	31,6	-	105,4	72,0	-
TÜFE / CPI	1,5	9,1	-	47,9	43,1	-	54,7	56,3	-
Sanayi Endeksi / Industry Index	2,9	5,4	-	61,7	39,7	-	95,6	65,3	-
Dolar \$ ** (1 birim)	18,0	26,9	49,8	15,5	21,5	38,3	13,8	20,5	48,2
Euro € ** (1 birim)	18,2	29,4	61,2	16,6	23,3	40,2	15,1	21,8	44,5
Japon Yeni ¥ ** (100 birim)	13,3	18,5	39,6	12,2	15,6	27,3	11,2	14,7	31,2

*Toplam Sanayi / Total Industry Including Components

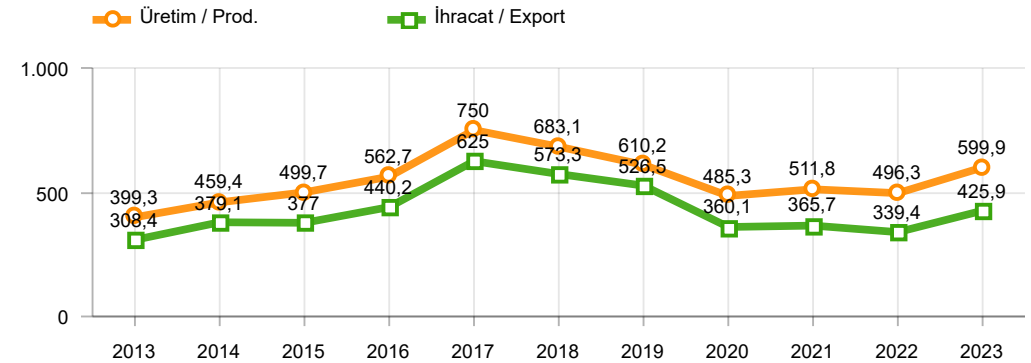
** Ortalama Değerler / Average Values

Araç Tipleri / Types	8 / 2022	8 / 2023	8 % Değişim	1-8 / 2022	1-8 / 2023	1-8 % Değişim
OTOMOBİL / Pass.Car	62.560	49.300	-21,2	496.302	599.915	20,9
OTOMOBİL Toplam / Pass.Car Total	62.560	49.300	-21,2	496.302	599.915	20,9
B.KAMYON / H. Truck	2.585	3.237	25,2	24.768	30.966	25,0
K.KAMYON / L. Truck	403	528	31,0	3.070	3.421	11,4
KAMYONET / Pick Up	22.846	15.254	-33,2	269.789	262.628	-2,7
OTOBÜS / Bus	863	945	9,5	4.749	6.533	37,6
MINİBÜS / Minibus	3.073	3.310	7,7	32.539	37.054	13,9
MİDİBÜS / Midibus	295	446	51,2	1.941	3.092	59,3
TİCARİ ARAÇLAR Toplam / Commercial Vehicles Total	30.065	23.720	-21,1	336.856	343.694	2,0
TAŞIT ARAÇLARI Toplam / Motor Vehicles Total	92.625	73.020	-21,2	833.158	943.609	13,3
TRAKTÖR / F.Tractor	2.812	3.222	14,6	30.122	38.288	27,1
TRAKTÖR Toplam / F.Tractor Total	2.812	3.222	14,6	30.122	38.288	27,1
GENEL TOPLAM / Grand Total	95.437	76.242	-20,1	863.280	981.897	13,7

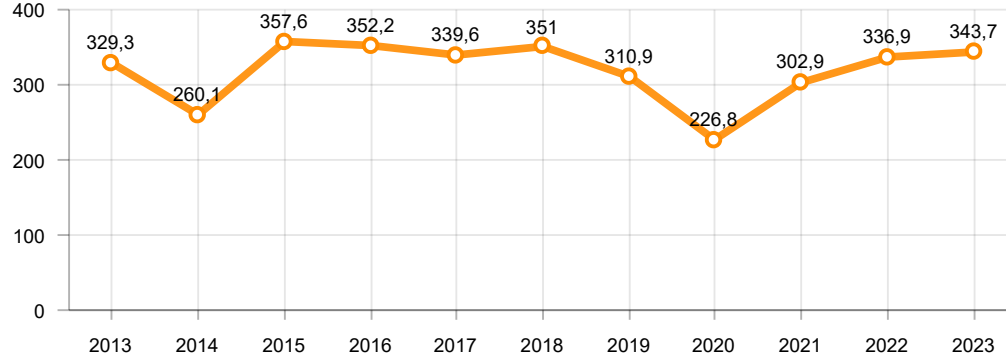
Toplam Üretim ve Otomobil Üretimi (x1000)(OCAK - AĞUSTOS)
Total & P.Cars Production (x1000)(January - August)



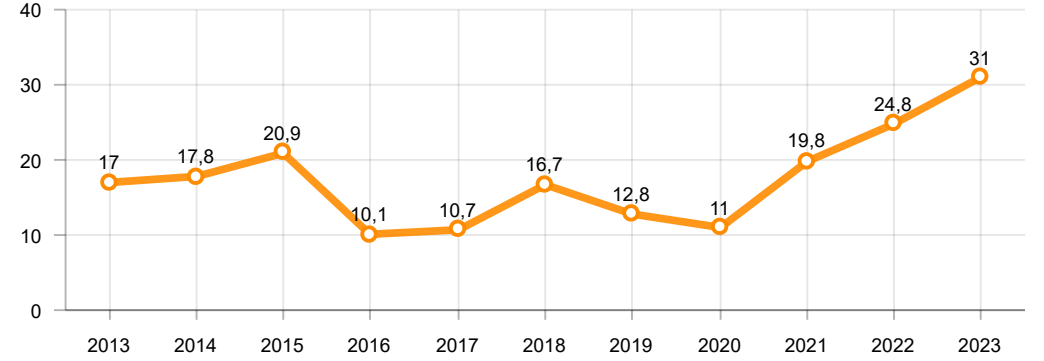
Otomobil Üretimi ve İhracat (x1000)(OCAK - AĞUSTOS)
P.Cars Production & Exports (x1000)(January - August)



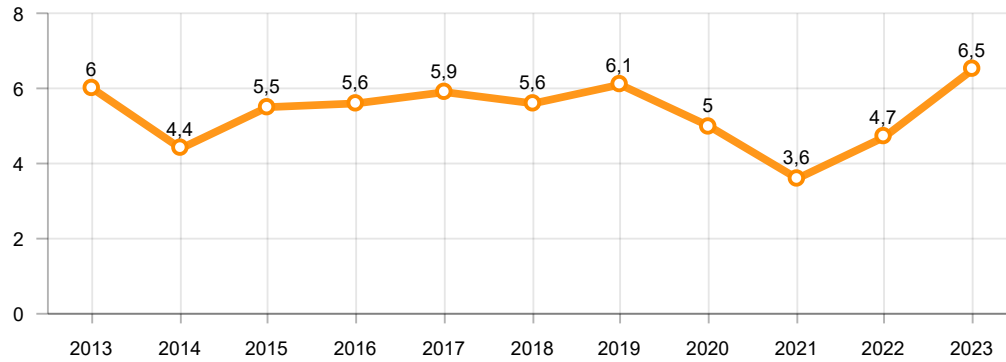
Ticari Araç Üretimi (x1000)(OCAK - AĞUSTOS)
Commercial Vehicle Production (x1000)(January - August)



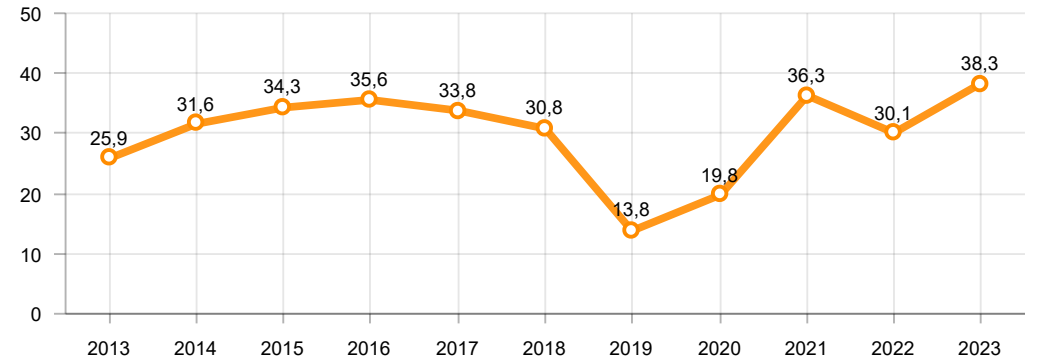
Büyük Kamyon Üretimi (x1000)(OCAK - AĞUSTOS)
Heavy Truck Production (x1000)(January - August)

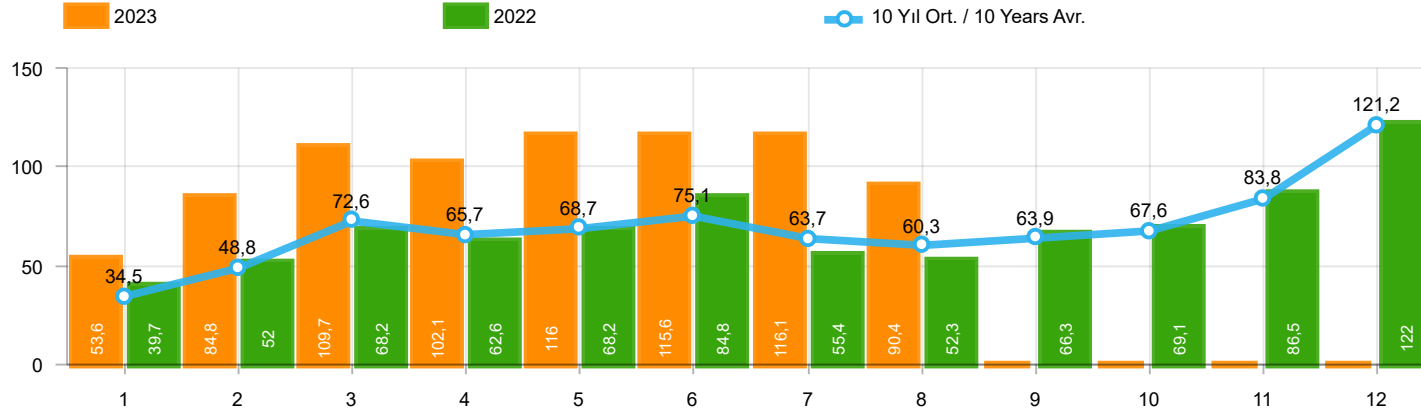


Otobüs Üretimi (x1000)(OCAK - AĞUSTOS)
Bus Production (x1000)(January - August)



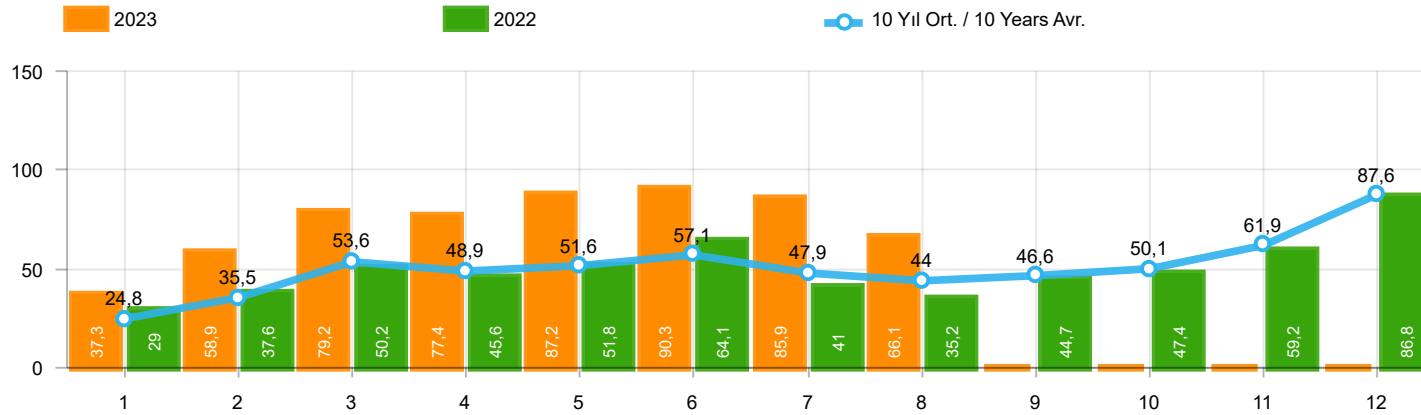
Traktör Üretimi (x1000)(OCAK - AĞUSTOS)
F. Tractor Production (x1000)(January - August)





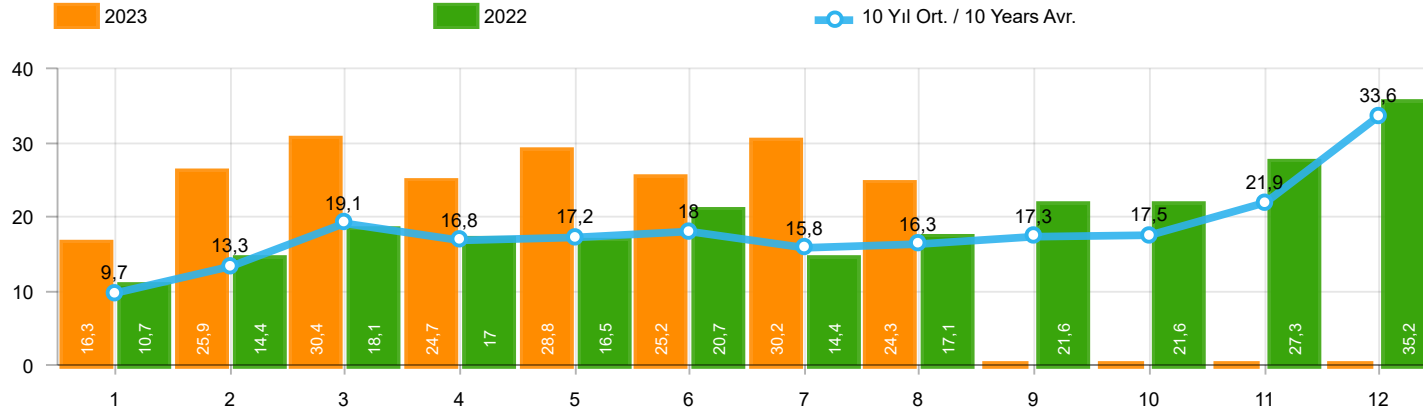
Aylar / Months	10 Yıl Ort. / 10 Years Avr.	2023	%
1	34.512	53.578	55,2
2	48.807	84.781	73,7
3	72.622	109.658	51,0
4	65.666	102.072	55,4
5	68.722	116.027	68,8
6	75.146	115.553	53,8
7	63.695	116.147	82,3
8	60.309	90.381	49,9
TOPLAM/TOTAL	489.481	788.197	61,0

Yıl / Year	1	2	3	4	5	6	7	8	9	10	11	12	1-8 Toplam / Total	Toplam / Total	1-8 Yerli / Local	1-8 İthal / Import	İthal Oran / Import %
2013	37.563	51.133	72.943	77.265	85.835	78.043	75.152	67.662	71.388	60.690	83.470	136.048	545.596	897.192	169.117	376.479	69,0
2014	34.751	37.659	51.312	57.113	62.447	64.295	62.770	63.303	70.764	69.742	84.368	154.843	433.650	813.367	144.307	289.343	66,7
2015	37.256	59.221	89.765	96.182	85.804	91.071	87.358	85.244	67.181	67.086	88.431	164.464	631.901	1.019.063	218.269	413.632	65,5
2016	34.369	54.840	85.932	87.748	97.090	94.666	59.732	73.654	69.413	85.666	125.462	145.706	588.031	1.014.278	190.691	397.340	67,6
2017	36.640	48.585	76.178	78.231	88.066	85.820	84.727	74.818	74.046	94.439	103.772	141.507	573.065	986.829	209.076	363.989	63,5
2018	36.525	48.768	79.600	73.886	74.996	52.788	54.194	35.137	23.915	22.321	59.406	80.014	455.894	641.550	174.385	281.509	61,7
2019	14.847	25.569	50.651	31.944	33.947	43.899	18.442	26.832	43.068	50.288	59.575	92.885	246.131	491.947	111.569	134.562	54,7
2020	28.123	48.948	51.554	27.165	33.308	72.789	89.419	63.570	93.406	97.125	82.824	107.919	414.876	796.150	184.797	230.079	55,5
2021	45.308	61.325	100.046	64.551	57.510	83.304	49.732	60.573	59.717	60.064	64.087	66.633	522.349	772.850	229.214	293.135	56,1
2022	39.741	52.030	68.241	62.584	68.221	84.788	55.424	52.297	66.304	69.072	86.499	121.962	483.326	827.163	215.376	267.950	55,4
2023	53.578	84.781	109.658	102.072	116.027	115.553	116.147	90.381					788.197	788.197	291.015	497.182	63,1



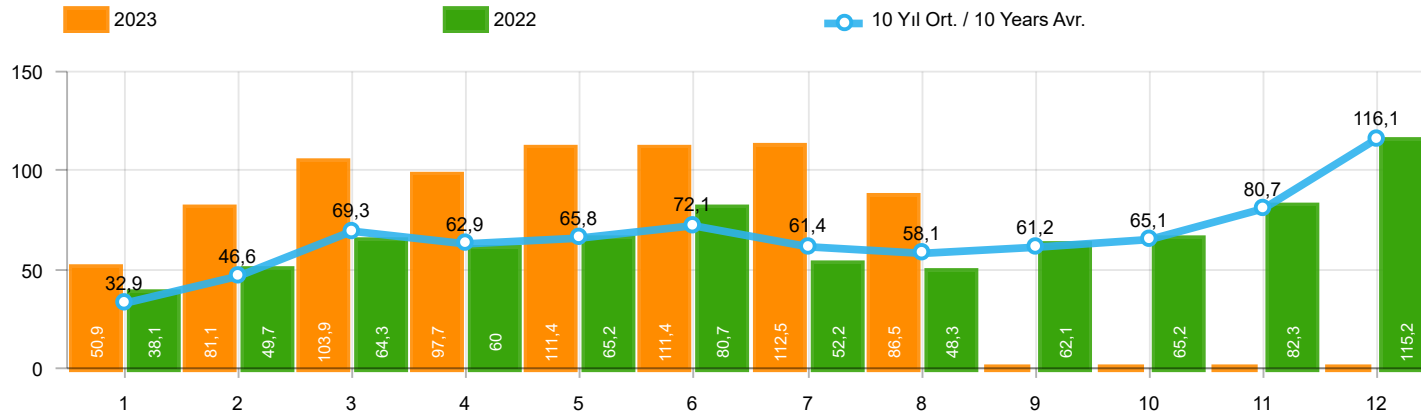
Aylar / Months	10 Yıl Ort. / 10 Years Avr.	2023	%
1	24.773	37.288	50,5
2	35.527	58.907	65,8
3	53.571	79.226	47,9
4	48.888	77.398	58,3
5	51.559	87.218	69,2
6	57.141	90.335	58,1
7	47.867	85.916	79,5
8	44.024	66.131	50,2
TOPLAM / TOTAL	363.349	582.419	60,3

Yıl / Year	1	2	3	4	5	6	7	8	9	10	11	12	1-8 Toplam / Total	Toplam / Total	1-8 Yerli / Local	1-8 İthal / Import	İthal Oran / Import %
2013	25.835	36.814	51.785	56.999	62.383	58.290	55.712	51.611	52.925	46.985	64.117	101.199	399.429	664.655	86.633	312.796	78,3
2014	24.368	27.167	37.812	42.769	46.379	47.278	46.602	45.131	49.262	50.814	59.695	110.054	317.506	587.331	78.863	238.643	75,2
2015	24.498	40.817	61.676	70.211	62.878	67.766	64.218	61.753	47.088	47.954	62.397	114.340	453.817	725.596	114.025	339.792	74,9
2016	23.358	40.588	63.975	65.618	73.832	71.111	45.566	53.977	51.340	63.746	95.783	108.044	438.025	756.938	107.723	330.302	75,4
2017	25.689	34.658	55.616	57.998	65.799	66.164	62.384	54.890	53.423	70.488	75.956	99.694	423.198	722.759	129.160	294.038	69,5
2018	26.611	35.901	59.798	55.108	57.227	41.225	42.024	26.976	17.595	16.809	46.204	60.843	344.870	486.321	115.567	229.303	66,5
2019	10.979	19.205	38.628	24.416	27.126	36.024	15.398	21.544	35.308	39.996	47.803	70.829	193.320	387.256	83.160	110.160	57,0
2020	22.016	37.727	39.887	21.825	25.073	57.067	69.427	44.372	71.296	76.341	64.357	80.721	317.394	610.109	123.760	193.634	61,0
2021	35.358	44.749	76.357	48.375	43.138	62.348	36.311	44.756	43.408	40.512	42.982	43.559	391.392	561.853	158.022	233.370	59,6
2022	29.020	37.641	50.173	45.564	51.750	64.134	41.031	35.230	44.681	47.440	59.222	86.774	354.543	592.660	137.743	216.800	61,1
2023	37.288	58.907	79.226	77.398	87.218	90.335	85.916	66.131					582.419	582.419	182.920	399.499	68,6



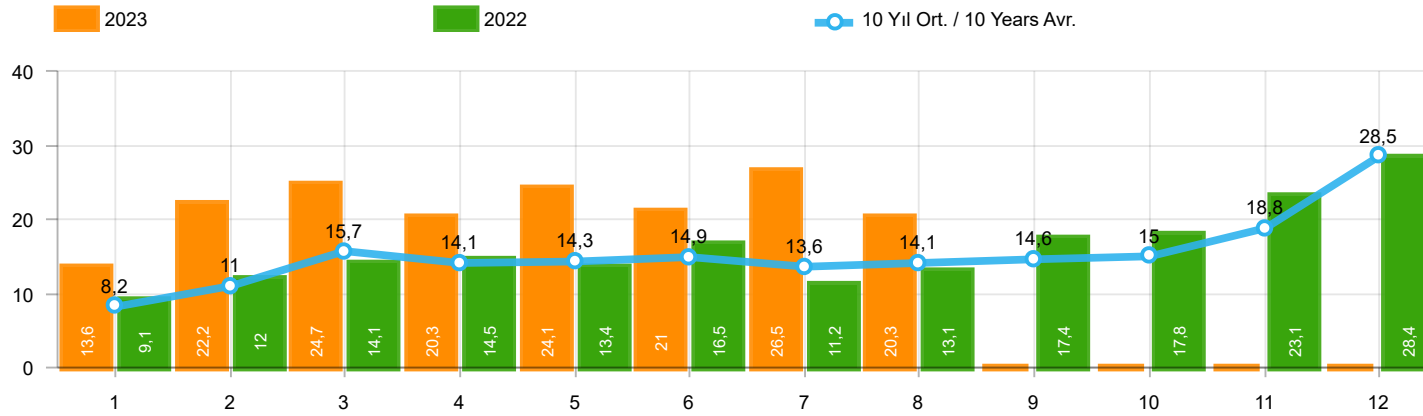
Aylar / Months	10 Yıl Ort. / 10 Years Avr.	2023	%
1	9.739	16.290	67,3
2	13.281	25.874	94,8
3	19.052	30.432	59,7
4	16.779	24.674	47,1
5	17.164	28.809	67,8
6	18.006	25.218	40,1
7	15.828	30.231	91,0
8	16.285	24.250	48,9
TOPLAM / TOTAL	126.133	205.778	63,1

Yıl / Year	1	2	3	4	5	6	7	8	9	10	11	12	1-8 Toplam / Total	Toplam / Total	1-8 Yerli / Local	1-8 İthal / Import	İthal Oran / Import %
2013	11.728	14.319	21.158	20.266	23.452	19.753	19.440	16.051	18.463	13.705	19.353	34.849	146.167	232.537	82.484	63.683	43,6
2014	10.383	10.492	13.500	14.344	16.068	17.017	16.168	18.172	21.502	18.928	24.673	44.789	116.144	226.036	65.444	50.700	43,7
2015	12.758	18.404	28.089	25.971	22.926	23.305	23.140	23.491	20.093	19.132	26.034	50.124	178.084	293.467	104.244	73.840	41,5
2016	11.011	14.252	21.957	22.130	23.258	23.555	14.166	19.677	18.073	21.920	29.679	37.662	150.006	257.340	82.968	67.038	44,7
2017	10.951	13.927	20.562	20.233	22.267	19.656	22.343	19.928	20.623	23.951	27.816	41.813	149.867	264.070	79.916	69.951	46,7
2018	9.914	12.867	19.802	18.778	17.769	11.563	12.170	8.161	6.320	5.512	13.202	19.171	111.024	155.229	58.818	52.206	47,0
2019	3.868	6.364	12.023	7.528	6.821	7.875	3.044	5.288	7.760	10.292	11.772	22.056	52.811	104.691	28.409	24.402	46,2
2020	6.107	11.221	11.667	5.340	8.235	15.722	19.992	19.198	22.110	20.784	18.467	27.198	97.482	186.041	61.037	36.445	37,4
2021	9.950	16.576	23.689	16.176	14.372	20.956	13.421	15.817	16.309	19.552	21.105	23.074	130.957	210.997	71.192	59.765	45,6
2022	10.721	14.389	18.068	17.020	16.471	20.654	14.393	17.067	21.623	21.632	27.277	35.188	128.783	234.503	77.633	51.150	39,7
2023	16.290	25.874	30.432	24.674	28.809	25.218	30.231	24.250					205.778	205.778	108.095	97.683	47,5



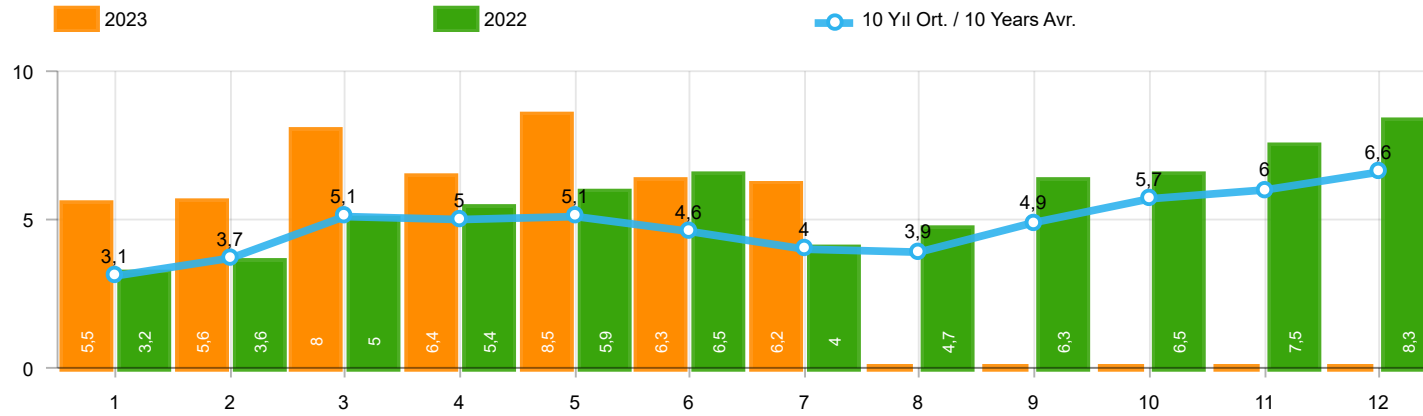
Aylar / Months	10 Yıl Ort. / 10 Years Avr.	2023	%
1	32.943	50.894	54,5
2	46.561	81.148	74,3
3	69.268	103.929	50,0
4	62.943	97.679	55,2
5	65.836	111.356	69,1
6	72.078	111.363	54,5
7	61.429	112.459	83,1
8	58.083	86.454	48,8
TOPLAM / TOTAL	469.141	755.282	61,0

Yıl / Year	1	2	3	4	5	6	7	8	9	10	11	12	1-8 Toplam / Total	Toplam / Total	1-8 Yerli / Local	1-8 İthal / Import	İthal Oran / Import %
2013	35.523	48.307	68.774	73.575	81.468	74.096	71.596	65.043	67.963	58.014	79.301	129.718	518.382	853.378	148.289	370.093	71,4
2014	32.670	35.021	47.581	53.305	58.121	60.163	59.907	60.199	66.531	66.573	80.621	146.989	406.967	767.681	123.875	283.092	69,6
2015	34.615	55.331	83.302	91.602	81.542	86.158	83.836	82.577	64.025	64.255	84.601	156.173	598.963	968.017	193.665	405.298	67,7
2016	32.713	52.825	82.948	84.887	93.904	91.540	58.533	71.556	67.593	83.000	122.309	141.912	568.906	983.720	176.515	392.391	69,0
2017	35.323	46.965	73.802	75.988	85.422	83.658	82.297	72.536	71.352	91.752	100.859	136.240	555.991	956.194	196.518	359.473	64,7
2018	35.076	47.009	76.345	71.126	72.755	51.037	52.734	34.346	23.028	21.571	58.204	77.706	440.428	620.937	164.168	276.260	62,7
2019	14.373	24.875	49.221	30.971	33.016	42.688	17.927	26.246	41.992	49.075	58.176	90.500	239.317	479.060	106.925	132.392	55,3
2020	27.273	47.122	50.008	26.457	32.235	70.973	87.401	61.533	90.619	94.733	80.141	104.293	403.002	772.788	176.555	226.447	56,2
2021	43.728	58.504	96.428	61.488	54.734	79.819	47.849	58.454	57.141	56.746	60.216	62.243	501.004	737.350	215.949	285.055	56,9
2022	38.131	49.652	64.267	60.035	65.167	80.652	52.206	48.336	62.084	65.222	82.311	115.220	458.446	783.283	198.561	259.885	56,7
2023	50.894	81.148	103.929	97.679	111.356	111.363	112.459	86.454					755.282	755.282	268.990	486.292	64,4



Aylar / Months	10 Yıl Ort / 10 Years Avr.	2023	%
1	8.169	13.606	66,6
2	11.034	22.241	101,6
3	15.697	24.703	57,4
4	14.055	20.281	44,3
5	14.278	24.138	69,1
6	14.938	21.028	40,8
7	13.561	26.543	95,7
8	14.059	20.323	44,6
TOPLAM / TOTAL	105.791	172.863	63,4

Yıl / Year	1	2	3	4	5	6	7	8	9	10	11	12	1-8 Toplam / Total	Toplam / Total	1-8 Yerli / Local	1-8 İthal / Import	İthal Oran / Import %
2013	9.688	11.493	16.989	16.576	19.085	15.806	15.884	13.432	15.038	11.029	15.184	28.519	118.953	188.723	61.656	57.297	48,2
2014	8.302	7.854	9.769	10.536	11.742	12.885	13.305	15.068	17.269	15.759	20.926	36.935	89.461	180.350	45.012	44.449	49,7
2015	10.117	14.514	21.626	21.391	18.664	18.392	19.618	20.824	16.937	16.301	22.204	41.833	145.146	242.421	79.640	65.506	45,1
2016	9.355	12.237	18.973	19.269	20.072	20.429	12.967	17.579	16.253	19.254	26.526	33.868	130.881	226.782	68.792	62.089	47,4
2017	9.634	12.307	18.186	17.990	19.623	17.494	19.913	17.646	17.929	21.264	24.903	36.546	132.793	233.435	67.358	65.435	49,3
2018	8.465	11.108	16.547	16.018	15.528	9.812	10.710	7.370	5.433	4.762	12.000	16.863	95.558	134.616	48.601	46.957	49,1
2019	3.394	5.670	10.593	6.555	5.890	6.664	2.529	4.702	6.684	9.079	10.373	19.671	45.997	91.804	23.765	22.232	48,3
2020	5.257	9.395	10.121	4.632	7.162	13.906	17.974	17.161	19.323	18.392	15.784	23.572	85.608	162.679	52.795	32.813	38,3
2021	8.370	13.755	20.071	13.113	11.596	17.471	11.538	13.698	13.733	16.234	17.234	18.684	109.612	175.497	57.927	51.685	47,2
2022	9.111	12.011	14.094	14.471	13.417	16.518	11.175	13.106	17.403	17.782	23.089	28.446	103.903	190.623	60.818	43.085	41,5
2023	13.606	22.241	24.703	20.281	24.138	21.028	26.543	20.323					172.863	172.863	86.070	86.793	50,2



Aylar / Months	10 Yıl Ort / 10 Years Avr.	2023	%
1	3.083	5.533	79,5
2	3.701	5.569	50,5
3	5.145	7.959	54,7
4	5.014	6.433	28,3
5	5.055	8.511	68,4
6	4.576	6.269	37,0
7	3.957	6.221	57,2
TOPLAM / TOTAL	30.531	46.495	52,3

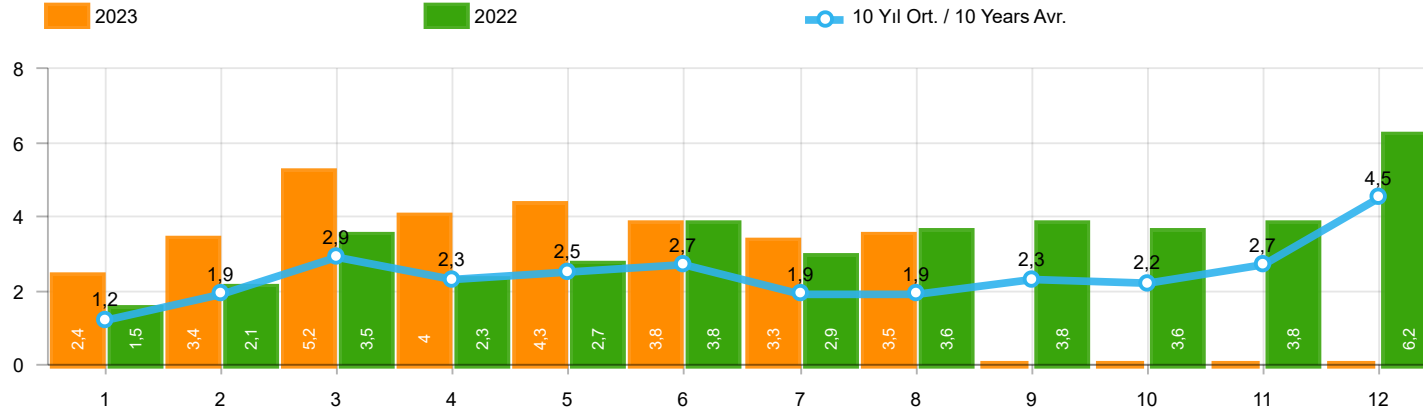
Yıl / Year	1	2	3	4	5	6	7	8	9	10	11	12	1-7 Toplam / Total	Toplam / Total
2013	2.161	2.432	4.005	4.585	5.616	3.136	4.574	3.408	4.935	4.762	5.781	6.891	26.509	52.286
2014	2.169	3.512	4.476	4.905	5.094	5.028	4.233	4.920	5.619	5.743	6.250	7.409	29.417	59.358
2015	3.124	3.984	5.460	6.383	6.078	5.748	4.677	5.044	4.765	7.049	6.898	7.564	35.454	66.774
2016	3.739	4.731	7.067	6.546	6.575	5.543	3.833	5.134	4.945	7.372	7.090	7.603	38.034	70.178
2017	3.974	4.964	6.773	6.780	7.057	5.356	5.003	4.396	6.064	7.734	7.457	7.351	39.907	72.909
2018	4.362	4.179	5.925	5.216	4.584	3.146	3.654	2.587	3.541	3.698	3.578	3.886	31.066	48.356
2019	1.311	1.401	2.143	2.126	2.229	1.538	2.039	1.579	2.284	2.828	3.037	3.782	12.787	26.297
2020	2.425	2.778	3.771	2.606	3.244	4.173	3.727	3.974	4.928	5.466	5.831	6.221	22.724	49.144
2021	4.411	5.395	6.845	5.581	4.200	5.571	3.846	3.093	6.100	5.351	6.901	6.776	35.849	64.070
2022	3.152	3.636	4.988	5.408	5.873	6.520	3.985	4.740	6.265	6.542	7.514	8.319	33.562	66.942
2023	5.533	5.569	7.959	6.433	8.511	6.269	6.221	-	-	-	-	-	46.495	46.495

Kaynak: TÜİK trafik kayıtları.

Rakamlar, son iki model yılına ait traktör tescillerinden oluşmaktadır.

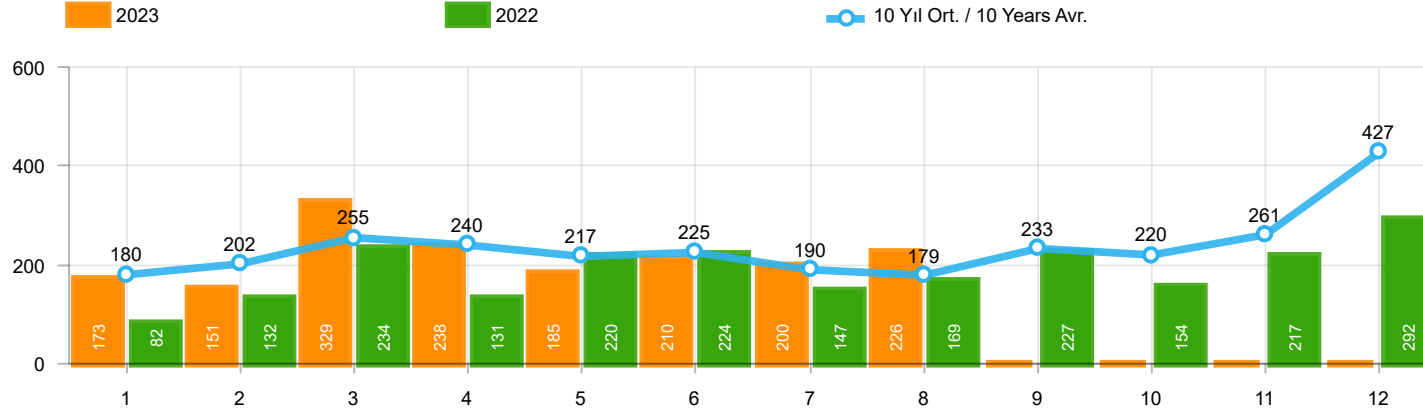
Source: Turkish Statistical Institute – Traffic registrations

Data represents the last two model year's farm tractors registration figures



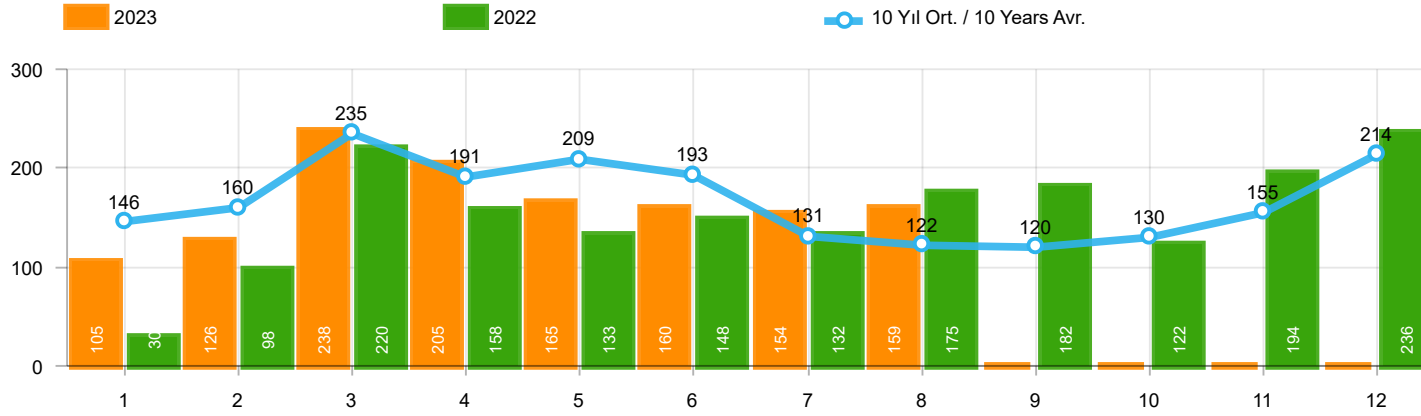
Aylar / Months	10 Yıl Ort / 10 Years Avr.	2023	%
1	1.244	2.406	93,3
2	1.885	3.356	78,0
3	2.865	5.162	80,2
4	2.293	3.950	72,3
5	2.460	4.321	75,6
6	2.650	3.820	44,1
7	1.945	3.334	71,4
8	1.925	3.542	84,0
TOPLAM / TOTAL	17.268	29.891	73,1

Yıl / Year	1	2	3	4	5	6	7	8	9	10	11	12	1-8 Toplam / Total	Toplam / Total	1-8 Yerli / Local	1-8 İthal / Import	İthal Oran / Import %
2013	1.484	2.113	3.343	2.925	3.504	3.186	2.777	2.103	2.875	2.086	3.631	5.444	21.435	35.471	15.068	6.367	29,7
2014	1.522	2.065	3.094	3.224	3.727	3.726	2.578	2.783	3.708	2.858	3.384	6.869	22.719	39.538	16.613	6.106	26,9
2015	2.215	3.346	5.699	3.729	3.600	4.253	2.922	2.211	2.687	2.266	3.146	7.307	27.975	43.381	19.710	8.265	29,5
2016	1.167	1.648	2.515	2.319	2.711	2.623	984	1.796	1.438	2.238	2.485	3.127	15.763	25.051	10.845	4.918	31,2
2017	931	1.290	1.982	1.888	2.184	1.891	1.974	1.860	2.284	2.188	2.487	4.438	14.000	25.397	9.496	4.504	32,2
2018	1.237	1.552	2.630	2.328	1.909	1.272	1.235	603	653	488	905	1.695	12.766	16.507	7.528	5.238	41,0
2019	342	579	1.255	842	728	981	435	497	854	1.047	1.100	2.087	5.659	10.747	3.489	2.170	38,3
2020	682	1.475	1.290	628	921	1.570	1.809	1.835	2.660	2.239	2.537	3.358	10.210	21.004	6.578	3.632	35,6
2021	1.366	2.633	3.319	2.788	2.617	3.238	1.799	1.942	2.377	3.067	3.549	4.045	19.702	32.740	11.622	8.080	41,0
2022	1.498	2.148	3.520	2.260	2.701	3.764	2.939	3.617	3.811	3.574	3.777	6.214	22.447	39.823	14.382	8.065	35,9
2023	2.406	3.356	5.162	3.950	4.321	3.820	3.334	3.542					29.891	29.891	19.001	10.890	36,4



Aylar / Months	10 Yıl Ort / 10 Years Avr.	2023	%
1	180	173	-3,8
2	202	151	-25,1
3	255	329	28,8
4	240	238	-,7
5	217	185	-14,7
6	225	210	-6,6
7	190	200	5,4
8	179	226	26,0
TOPLAM / TOTAL	1.688	1.712	1,5

Yıl / Year	1	2	3	4	5	6	7	8	9	10	11	12	1-8 Toplam / Total	Toplam / Total
2013	191	268	289	276	283	241	367	235	305	392	415	697	2.150	3.959
2014	360	394	384	333	294	258	216	229	395	220	266	653	2.468	4.002
2015	280	322	451	561	372	405	389	253	316	394	325	621	3.033	4.689
2016	309	158	251	302	261	196	139	220	241	230	354	431	1.836	3.092
2017	212	211	227	231	272	156	250	235	318	268	317	594	1.794	3.291
2018	134	142	410	296	207	315	180	146	160	155	184	425	1.830	2.754
2019	57	61	63	96	106	189	55	44	138	138	257	244	671	1.448
2020	104	221	128	35	97	134	111	123	77	71	82	137	953	1.320
2021	70	108	117	135	58	131	44	139	153	178	188	172	802	1.493
2022	82	132	234	131	220	224	147	169	227	154	217	292	1.339	2.229
2023	173	151	329	238	185	210	200	226					1.712	1.712

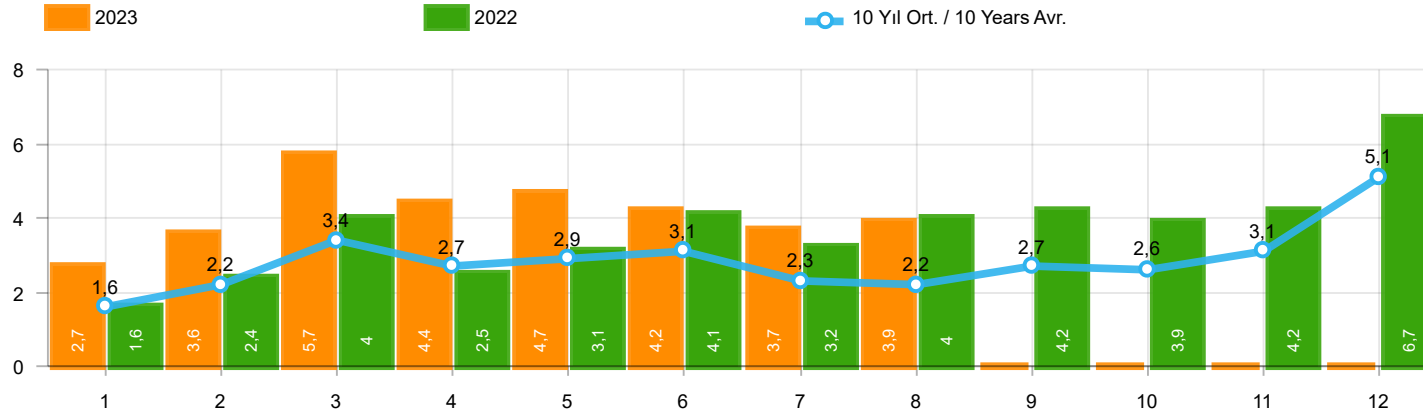


Aylar / Months	10 Yıl Ort / 10 Years Avr.	2023	%
1	146	105	-27,8
2	160	126	-21,3
3	235	238	1,5
4	191	205	7,4
5	209	165	-21,0
6	193	160	-16,9
7	131	154	17,2
8	122	159	29,9
TOPLAM / TOTAL	1.386	1.312	-5,4

Yıl / Year	1	2	3	4	5	6	7	8	9	10	11	12	1-8 Toplam / Total	Toplam / Total	1-8 Yerli / Local	1-8 İthal / Import	İthal Oran / Import %
2013	365	445	537	489	580	520	412	281	245	198	123	189	3.629	4.384	3.610	19	0,5
2014	199	179	253	251	305	148	69	92	130	91	97	332	1.496	2.146	1.351	145	9,7
2015	146	222	313	290	290	255	211	203	153	171	359	363	1.930	2.976	1.861	69	3,6
2016	180	209	218	240	214	307	76	82	141	198	314	236	1.526	2.415	1.495	31	2,0
2017	174	119	167	124	188	115	206	187	92	231	109	235	1.280	1.947	1.268	12	0,9
2018	78	65	215	136	125	164	45	42	74	107	113	188	870	1.352	859	11	1,3
2019	75	54	112	35	97	41	25	45	84	28	42	54	484	692	484	-	-
2020	64	130	128	45	55	112	98	79	50	82	64	131	711	1.038	711	-	-
2021	144	80	182	140	101	116	40	38	46	73	134	173	841	1.267	841	-	-
2022	30	98	220	158	133	148	132	175	182	122	194	236	1.094	1.828	1.094	-	-
2023	105	126	238	205	165	160	154	159					1.312	1.312	1.312	-	-

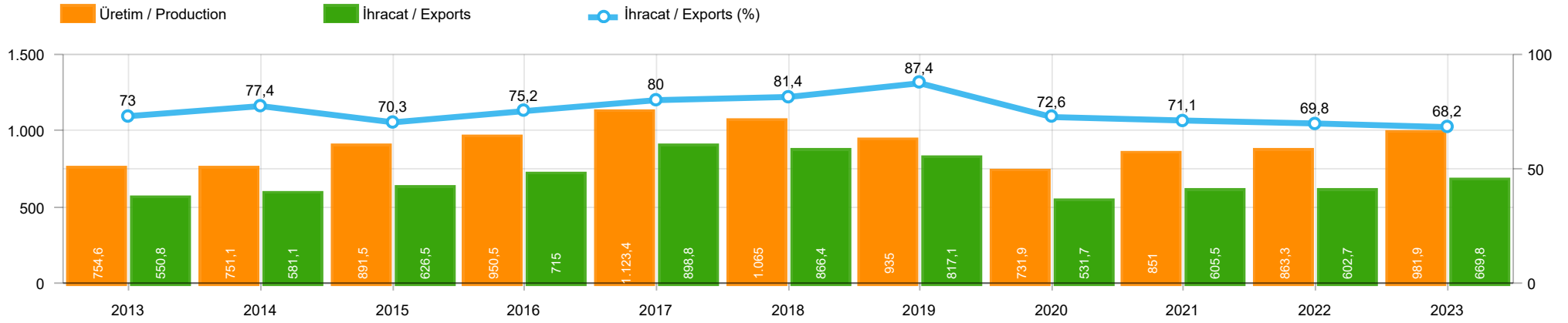
Ağır Ticari Araç Pazarının Analizi(x1000)(OCAK - AĞUSTOS)

HCV Market Analysis(x1000)(January - August)



Aylar / Months	10 Yıl Ort / 10 Years Avr.	2023	%
1	1.570	2.684	71,0
2	2.247	3.633	61,7
3	3.355	5.729	70,8
4	2.724	4.393	61,3
5	2.886	4.671	61,9
6	3.068	4.190	36,6
7	2.266	3.688	62,7
8	2.226	3.927	76,4
TOPLAM / TOTAL	20.341	32.915	61,8

Yıl / Year	1	2	3	4	5	6	7	8	9	10	11	12	1-8 Toplam / Total	Toplam / Total	1-8 Yerli / Local	1-8 İthal / Import	İthal Oran / Import %
2013	2.040	2.826	4.169	3.690	4.367	3.947	3.556	2.619	3.425	2.676	4.169	6.330	27.214	43.814	20.828	6.386	23,5
2014	2.081	2.638	3.731	3.808	4.326	4.132	2.863	3.104	4.233	3.169	3.747	7.854	26.683	45.686	20.432	6.251	23,4
2015	2.641	3.890	6.463	4.580	4.262	4.913	3.522	2.667	3.156	2.831	3.830	8.291	32.938	51.046	24.604	8.334	25,3
2016	1.656	2.015	2.984	2.861	3.186	3.126	1.199	2.098	1.820	2.666	3.153	3.794	19.125	30.558	14.176	4.949	25,9
2017	1.317	1.620	2.376	2.243	2.644	2.162	2.430	2.282	2.694	2.687	2.913	5.267	17.074	30.635	12.558	4.516	26,4
2018	1.449	1.759	3.255	2.760	2.241	1.751	1.460	791	887	750	1.202	2.308	15.466	20.613	10.217	5.249	33,9
2019	474	694	1.430	973	931	1.211	515	586	1.076	1.213	1.399	2.385	6.814	12.887	4.644	2.170	31,8
2020	850	1.826	1.546	708	1.073	1.816	2.018	2.037	2.787	2.392	2.683	3.626	11.874	23.362	8.242	3.632	30,6
2021	1.580	2.821	3.618	3.063	2.776	3.485	1.883	2.119	2.576	3.318	3.871	4.390	21.345	35.500	13.265	8.080	37,9
2022	1.610	2.378	3.974	2.549	3.054	4.136	3.218	3.961	4.220	3.850	4.188	6.742	24.880	43.880	16.815	8.065	32,4
2023	2.684	3.633	5.729	4.393	4.671	4.190	3.688	3.927					32.915	32.915	22.025	10.890	33,1



	2013	2014	2015	2016	2017	2018	2019	2020	2021	2022	2023
İhracat/Export	550.759	581.060	626.461	715.006	898.816	866.389	817.136	531.669	605.455	602.697	669.838
Üretim/Production	754.562	751.112	891.548	950.485	1.123.442	1.064.951	934.953	731.904	850.959	863.280	981.897
İhracat/Exports (%)	73	77,4	70,3	75,2	80	81,4	87,4	72,6	71,1	69,8	68,2

Taşıt Araçları İhracatı (2021 - 2023)
Motor Vehicle Exports (2021 - 2023)

SEKTÖR / SECTOR	2021	2022	1/8-2022	1/8-2023	2023/2022 %
OTOMOBİL / Pass.Car	565.370	571.218	339.401	425.934	25,5
OTOMOBİL TOPLAM / Pass. Car Total	565.370	571.218	339.401	425.934	25,5
KAMYON / Truck	17.293	20.123	11.981	13.350	11,4
KAMYONET / Pick Up	310.874	335.148	211.298	184.512	-12,7
OTOBÜS / Bus	4.750	6.579	3.604	5.585	55,0
MINİBÜS / Minibus	37.741	36.016	24.319	26.360	8,4
MİDİBÜS / Midibus	987	1.040	551	1.009	83,1
TİCARİ ARAÇLAR TOPLAM / Commercial Vehicle Total	371.645	398.906	251.753	230.816	-8,3
TAŞIT ARAÇLARI TOPLAM / Motor Vehicles Total	937.015	970.124	591.154	656.750	11,1
TRAKTÖR / F.Tractor	17.038	18.154	11.543	13.088	13,4
TRAKTÖR TOPLAM / F.Tractor Total	17.038	18.154	11.543	13.088	13,4
GENEL TOPLAM / GRAND TOTAL	954.053	988.278	602.697	669.838	11,1

Üretici Bazında İhracat (adet)
Exports by Manufacturer (unit)

Üreticiler / Manufacturers	2021	2022	1-8 / 2022	1-8 / 2023
A.I.O.S.	1.100	911	407	681
FORD OTOSAN	287.609	297.828	192.777	201.679
HATTAT TRAKTÖR	862	1.059	726	499
HYUNDAI ASSAN	138.739	176.664	114.332	132.762
KARSAN	2.135	301	114	166
M. BENZ TÜRK	13.911	15.674	9.167	10.749
MAN TÜRKİYE	1.573	1.786	1.016	1.599
OTOKAR	749	1.506	639	1.346
OYAK RENAULT	187.923	176.844	84.722	146.966
TEMSA	599	587	313	744
TOFAŞ	112.465	121.477	73.181	36.403
TOYOTA	187.907	176.546	114.486	123.655
TÜRK TRAKTÖR	16.176	17.095	10.817	12.589
GENEL TOPLAM / Grand Total	951.748	988.278	602.697	669.838

Otomotiv Ana ve Yan Sanayii İhracatı (ABD \$)

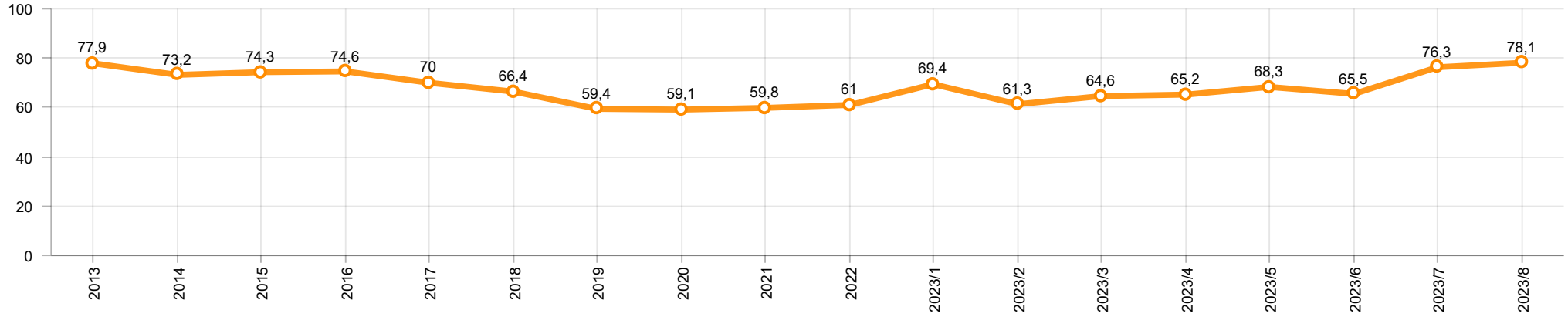
CBU and CKD Exports - \$

Sektör / Sector	2021	2022	OCAK - AĞUSTOS / January - August 2022	OCAK - AĞUSTOS / January - August 2023	2023 / 2022 %
Toplam Yan Sanayi / Total Component Industry	11.824.049.653,01	12.831.129.592,62	8.376.885.440,8	9.394.136.468,57	12,1
İç ve Dış Lastik / Tyres	1.630.367.018,49	1.767.320.167	1.192.867.101,3	1.202.658.820,79	0,8
Emniyet Camı / Safety Glasses	203.192.140,55	234.466.834,44	154.099.139,19	176.403.138,4	14,5
Motor / Engine	296.695.616,13	233.029.231,53	172.514.134,94	165.653.626,19	-4,0
Akümülatör / Batteries	509.199.445,03	547.895.439,61	339.962.158,21	301.103.233,18	-11,4
Diğer Aksam ve Parça / Spare Parts&Components	9.184.595.432,81	10.048.417.920,04	6.517.442.907,16	7.548.317.650,01	15,8
Toplam Ana Sanayi / Total Vehicle Industry	18.048.636.689,96	18.677.239.435,86	11.484.543.356,39	13.903.872.841,47	21,1
Otobüs / Bus	1.014.817.251,08	1.201.795.118,6	647.368.105,61	1.040.340.404,56	60,7
Midibüs-Minibüs / Midibus-Minibus	193.913.261,22	163.044.669,04	106.788.446,01	190.054.226,51	78,0
Otomobil / P.Cars	9.272.072.907,39	9.069.547.725,1	5.611.539.622,81	7.148.791.802,02	27,4
Kamyon-Kamyonet / Truck-Pick Up&Van	5.420.090.951,32	5.633.803.021,79	3.524.025.223,04	3.659.110.345,11	3,8
Römork ve Yarı Römork / Trailer-Semi Trailer	609.758.049,6	763.209.294,39	467.623.482,38	501.525.121,85	7,2
Çekici / Tractor	1.018.262.590,07	1.266.205.170,15	765.758.311,88	957.701.169,76	25,1
Tarım Traktörü / Farm Tractor	519.721.679,28	579.634.436,79	361.440.164,66	406.349.771,66	12,4
Toplam / Total	29.872.686.342,97	31.508.369.028,48	19.861.428.797,19	23.298.009.310,04	17,3

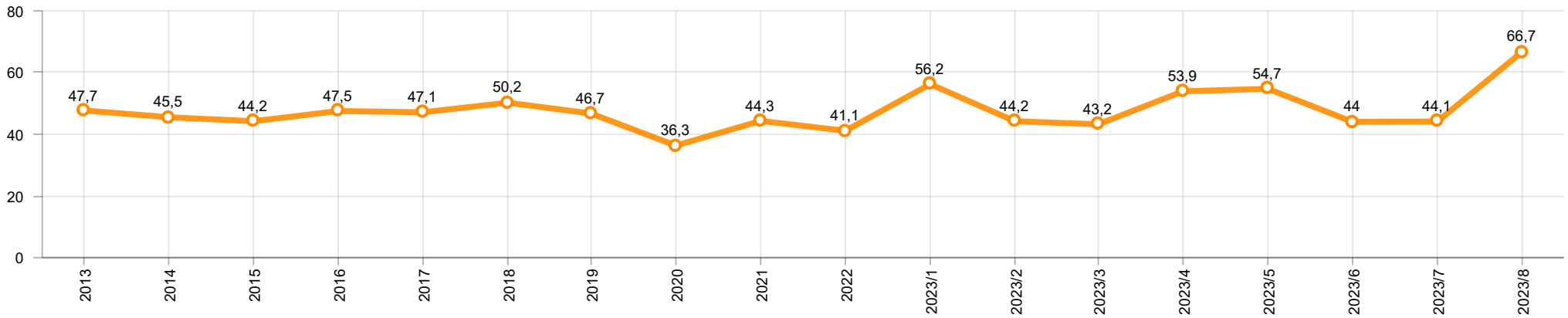
Kaynak: Uludağ İhracatçı Birlikleri . ÜİB tarafından OSD için özel olarak analiz edilen Otomotiv İhracatı kapsamında; ÜİB Türkiye Genel Otomotiv Endüstrisi sınıflandırmasına kıyasla “Römork ve Yarı Römork” , “Tarım Traktörü” verileri dahil edilmekte; “Kullanılmış Araçlar” ,”İki Tekerlekli Taşıtlar” , “Demiryolu Taşıtları” hariç tutulmaktadır.

Source: Uludağ Exporters Association – Special Analyze for OSD.Compared to Turkish General Automotive Industry classification, this special analyze includes; farms tractors, trailers and semi-trailers, does not include; used vehicles, two-wheeled vehicles and railway vehicles

Otomobil Pazarında İthalatın Payı (%)
Import Share in P.Car Market (%)



Hafif Ticari Araçlar Pazarında İthalatın Payı (%)
Import Share in LCV Market (%)



Araç Tipleri / Vehicle Types	1	2	3	4	5	6	7	8	9	10	11	12	Toplam / Total
OTOMOBİL - Pass.Car	51.122	46.473	59.168	48.634	58.456	61.621	50.196	50.264					425.934
KAMYON - H. Truck	1.294	1.789	1.757	1.222	1.834	1.701	2.026	1.557					13.180
K.KAMYON - L. Truck	25	18	19	1	33	60	11	3					170
KAMYONET - Pick Up	23.167	26.083	29.741	21.455	21.723	23.148	24.290	14.905					184.512
OTOBÜS - Bus	479	584	754	709	788	758	756	757					5.585
MİNİBÜS - Minibus	3.212	3.734	4.144	3.268	3.070	3.174	3.453	2.305					26.360
MİDİBÜS - Midibus	82	82	118	122	115	188	143	159					1.009
TİCARİ ARAÇLAR TOPLAMI - CV Total	28.259	32.290	36.533	26.777	27.563	29.029	30.679	19.686					230.816
TAŞIT ARAÇLARI TOPLAMI - MV Total	79.381	78.763	95.701	75.411	86.019	90.650	80.875	69.950					656.750
TRAKTÖR - F.Tractor	1.718	1.698	1.813	1.681	1.680	1.605	1.677	1.216					13.088
GENEL TOPLAM - Grand Total	81.099	80.461	97.514	77.092	87.699	92.255	82.552	71.166					669.838

Otomobil / P.Car

Firmalar / Firms	1	2	3	4	5	6	7	8	9	10	11	12	Toplam / Total
FORD OTOSAN	-	-	-	-	-	-	-	-	-	-	-	-	-
HYUNDAI ASSAN	20.026	16.310	18.880	16.060	18.470	14.304	18.197	10.515	-	-	-	-	132.762
OYAK RENAULT	9.728	18.194	20.350	14.713	20.315	28.216	14.138	21.312	-	-	-	-	146.966
TOFAŞ	507	1.646	2.954	3.171	3.998	3.393	4.020	2.862	-	-	-	-	22.551
TOYOTA	20.861	10.323	16.984	14.690	15.673	15.708	13.841	15.575	-	-	-	-	123.655
TOPLAM - Total	51.122	46.473	59.168	48.634	58.456	61.621	50.196	50.264	-	-	-	-	425.934

Kamyonet / Pick-up

Firmalar / Firms	1	2	3	4	5	6	7	8	9	10	11	12	Toplam / Total
A.I.O.S.	-	-	-	-	-	-	-	-	-	-	-	-	-
FORD OTOSAN	20.603	23.319	26.833	20.387	20.049	22.480	22.594	14.353	-	-	-	-	170.618
KARSAN	-	-	-	-	-	-	-	-	-	-	-	-	-
OTOKAR	-	-	-	-	22	20	-	-	-	-	-	-	42
TOFAŞ	2.564	2.764	2.908	1.068	1.652	648	1.696	552	-	-	-	-	13.852
TOPLAM - Total	23.167	26.083	29.741	21.455	21.723	23.148	24.290	14.905	-	-	-	-	184.512

Minibüs / Minibus

Firmalar / Firms	1	2	3	4	5	6	7	8	9	10	11	12	Toplam / Total
FORD OTOSAN	3.212	3.734	4.138	3.268	3.070	3.160	3.451	2.277	-	-	-	-	26.310
KARSAN	-	-	6	-	-	14	2	28	-	-	-	-	50
TOPLAM - Total	3.212	3.734	4.144	3.268	3.070	3.174	3.453	2.305	-	-	-	-	26.360

Kamyon / Truck

Firmalar / Firms	1	2	3	4	5	6	7	8	9	10	11	12	Toplam / Total
A.I.O.S.	24	18	2	-	19	48	-	-	-	-	-	-	111
FORD OTOSAN	459	619	732	548	611	473	733	576	-	-	-	-	4.751
KARSAN	-	-	-	-	-	-	-	-	-	-	-	-	-
M. BENZ TÜRK	835	1.170	1.025	674	1.223	1.228	1.293	981	-	-	-	-	8.429
OTOKAR	1	-	-	1	6	2	6	1	-	-	-	-	17
TEMSA	-	-	17	-	8	10	5	2	-	-	-	-	42
TOPLAM - Total	1.319	1.807	1.776	1.223	1.867	1.761	2.037	1.560	-	-	-	-	13.350

Midibüs / Midibus

Firmalar / Firms	1	2	3	4	5	6	7	8	9	10	11	12	Toplam / Total
A.I.O.S.	39	35	54	28	39	88	38	65	-	-	-	-	386
KARSAN	-	24	19	2	5	15	9	1	-	-	-	-	75
OTOKAR	39	12	11	67	53	40	57	56	-	-	-	-	335
TEMSA	4	11	34	25	18	45	39	37	-	-	-	-	213
TOPLAM - Total	82	82	118	122	115	188	143	159	-	-	-	-	1.009

Otobüs / Bus

Firmalar / Firms	1	2	3	4	5	6	7	8	9	10	11	12	Toplam / Total
A.I.O.S.	11	21	42	26	22	22	16	24	-	-	-	-	184
KARSAN	-	2	18	-	5	15	-	1	-	-	-	-	41
M. BENZ TÜRK	285	278	320	252	316	229	344	296	-	-	-	-	2.320
MAN TÜRKİYE	86	133	218	268	266	311	151	166	-	-	-	-	1.599
OTOKAR	83	137	96	90	113	138	158	137	-	-	-	-	952
TEMSA	14	13	60	73	66	43	87	133	-	-	-	-	489
TOPLAM - Total	479	584	754	709	788	758	756	757	-	-	-	-	5.585

Traktör / F.Tractor

Firmalar / Firms	1	2	3	4	5	6	7	8	9	10	11	12	Toplam / Total
HATTAT TRAKTÖR	80	44	47	80	50	43	39	116	-	-	-	-	499
TÜRK TRAKTÖR	1.638	1.654	1.766	1.601	1.630	1.562	1.638	1.100	-	-	-	-	12.589
TOPLAM - Total	1.718	1.698	1.813	1.681	1.680	1.605	1.677	1.216	-	-	-	-	13.088

Firmalar / Firms	2022 Toplam / Total	1	2	3	4	5	6	7	8	9	10	11	12	Toplam / Total
Alfa Romeo	820	138	235	204	131	428	163	297	145	-	-	-	-	1.741
Aston Martin	28	3	-	2	1	5	3	2	1	-	-	-	-	17
Audi	14.554	848	1.662	2.457	2.044	2.006	1.834	2.008	1.675	-	-	-	-	14.534
Bentley	15	3	2	5	-	1	5	4	3	-	-	-	-	23
BMW	18.056	580	1.692	2.645	2.123	2.157	1.343	1.965	1.995	-	-	-	-	14.500
Chery	-	-	-	629	1.401	3.509	4.218	5.030	6.100	-	-	-	-	20.887
Citroen	21.913	1.412	2.198	3.305	2.816	5.607	6.621	3.207	3.168	-	-	-	-	28.334
CUPRA	2.792	112	161	1.084	715	451	1.106	1.086	955	-	-	-	-	5.670
Dacia	36.000	5.074	3.312	3.716	3.884	2.837	2.602	6.235	2.666	-	-	-	-	30.326
DFSK	352	48	69	109	12	35	8	1	5	-	-	-	-	287
DS	1.829	106	287	324	434	433	553	570	131	-	-	-	-	2.838
Ferrari	22	-	-	5	3	2	2	2	2	-	-	-	-	16
Fiat	276	23	7	220	54	125	180	92	136	-	-	-	-	837
Ford	8.421	558	1.510	2.639	2.610	3.121	2.585	1.970	2.263	-	-	-	-	17.256
Honda	21.429	1.196	1.355	1.681	1.380	2.228	1.598	1.618	1.659	-	-	-	-	12.715
Hyundai	14.198	804	656	906	1.221	610	1.344	990	1.420	-	-	-	-	7.951
Jaguar	90	1	4	16	9	32	6	2	6	-	-	-	-	76
Jeep	2.422	150	160	158	346	325	240	394	224	-	-	-	-	1.997
Kia	18.462	733	1.439	1.737	1.667	1.890	1.996	1.623	1.757	-	-	-	-	12.842
Lamborghini	14	-	1	2	2	-	3	2	1	-	-	-	-	11
Land Rover	1.111	185	126	192	154	192	51	172	272	-	-	-	-	1.344
LEAPMOTOR	-	-	-	-	80	50	70	20	30	-	-	-	-	250
Lexus	336	15	5	29	86	57	67	43	15	-	-	-	-	317
Maserati	314	7	14	85	83	86	32	65	37	-	-	-	-	409
Mazda	181	10	16	20	17	20	20	20	20	-	-	-	-	143
Mercedes-Benz	18.661	573	950	1.448	2.860	1.256	2.206	1.438	2.835	-	-	-	-	13.566
MG	1.627	420	403	570	641	790	450	1.820	1.175	-	-	-	-	6.269
Mini	1.385	61	109	262	71	315	171	219	304	-	-	-	-	1.512
Mitsubishi	583	2	35	30	31	24	23	19	14	-	-	-	-	178
Nissan	9.337	728	750	607	2.762	1.066	884	1.460	968	-	-	-	-	9.225
Opel	30.378	1.476	3.519	4.706	5.107	8.798	8.393	6.256	3.986	-	-	-	-	42.241
Peugeot	23.345	1.628	5.065	6.874	4.659	6.855	5.645	6.659	3.353	-	-	-	-	40.738
Porsche	668	184	98	95	50	96	102	69	129	-	-	-	-	823
Renault	17.713	1.057	1.618	455	851	1.070	3.009	2.269	3.455	-	-	-	-	13.784
Seat	6.142	368	395	1.030	992	831	763	918	839	-	-	-	-	6.136
Skoda	19.464	2.740	2.971	4.234	2.846	2.759	2.259	2.579	2.086	-	-	-	-	22.474
SKYWELL	-	-	90	95	127	50	209	50	50	-	-	-	-	671
Ssangyong	804	17	-	-	65	16	31	47	168	-	-	-	-	344
Subaru	622	72	113	125	72	163	134	35	30	-	-	-	-	744
Suzuki	3.601	137	636	170	244	227	496	993	459	-	-	-	-	3.362
Toyota	5.767	1.003	475	954	485	896	1.370	1.569	1.171	-	-	-	-	7.923
Volkswagen	49.695	3.049	3.235	6.176	6.326	7.512	5.023	10.500	5.186	-	-	-	-	47.007
Volvo	8.228	368	732	1.150	964	603	1.340	1.273	751	-	-	-	-	7.181
GENEL TOPLAM - Grand Total	361.655	25.889	36.105	51.151	50.426	59.534	59.158	65.591	51.645	-	-	-	-	399.499

Firmalar / Firms	2022 Toplam / Total	1	2	3	4	5	6	7	8	9	10	11	12	Toplam / Total
Citroen	6.918	957	1.360	2.043	1.397	2.921	1.393	1.089	1.482	-	-	-	-	12.642
Fiat	2.561	165	487	150	822	401	1.593	1.385	2.224	-	-	-	-	7.227
Ford	1.323	111	58	141	32	29	124	238	266	-	-	-	-	999
Hyundai	2.935	248	188	513	555	513	435	494	672	-	-	-	-	3.618
Isuzu	1.317	64	91	99	218	246	116	191	110	-	-	-	-	1.135
Iveco	2.966	80	177	94	311	333	289	91	276	-	-	-	-	1.651
Kia	1.905	-	117	188	94	130	152	205	306	-	-	-	-	1.192
Land Rover	419	2	83	19	-	52	93	52	148	-	-	-	-	449
Mercedes-Benz	6.327	598	653	649	963	117	660	486	908	-	-	-	-	5.034
Mitsubishi	1.437	93	69	-	-	-	-	-	-	-	-	-	-	162
Opel	6.347	408	1.202	1.104	1.416	1.873	716	1.072	1.072	-	-	-	-	8.863
Peugeot	9.321	1.157	1.487	1.983	1.650	3.099	790	1.489	1.649	-	-	-	-	13.304
Renault	11.433	551	1.557	1.273	1.476	999	944	2.334	2.049	-	-	-	-	11.183
Ssangyong	489	114	69	77	122	104	92	80	85	-	-	-	-	743
Toyota	11.661	1.067	776	806	883	932	932	1.107	1.171	-	-	-	-	7.674
Volkswagen	10.646	2.027	1.466	1.527	1.002	1.452	923	1.392	1.128	-	-	-	-	10.917
GENEL TOPLAM - Grand Total	78.400	7.642	9.840	10.666	10.941	13.201	9.252	11.705	13.546	-	-	-	-	86.793