



OTOMOTİV SANAYİİ DERNEĐİ
AUTOMOTIVE MANUFACTURERS ASSOCIATION

OTOMOTİV SEKTÖRÜ AYLIK DEĐERLENDİRME RAPORU EYLÜL 2023

AUTOMOTIVE INDUSTRY MONTHLY REPORT
September 2023

OSD "OICA" Üyesidir © O I C A OSD is a Member of "OICA"

	9 - 2022	9 - 2023	%	1 - 9 / 2022	1 - 9 / 2023	%	10/2021 - 9/2022	10/2022 - 9/2023	%
Otomobil Üretimi/P.Cars Production	74.704	87.902	17,7	571.006	687.817	20,5	782.733	927.700	18,5
Toplam Üretim/Total Production	128.872	130.545	1,3	962.030	1.074.155	11,7	1.316.514	1.464.773	11,3
Otomobil Pazar/P.Cars Market	44.681	78.971	76,7	399.224	666.890	67,1	526.277	860.326	63,5
Toplam Pazar/Total Market	66.304	100.966	52,3	549.630	894.663	62,8	740.414	1.172.196	58,3
Otomobil İthalat/P.Cars Import	28.515	52.529	84,2	245.315	452.028	84,3	320.558	568.368	77,3
Toplam İthalat/Total Import	36.136	64.783	79,3	304.086	567.864	86,7	402.738	717.937	78,3
Otomobil İhracat/P.Cars Export	57.201	47.918	-16,2	396.602	473.850	19,5	560.532	648.466	15,7
Toplam İhracat/Total Export	96.810	77.208	-20,3	687.964	733.956	6,7	953.323	1.016.116	6,6
Otomobil İhracat(\$)/P.Cars Export (\$)	791.849.688,62	766.001.215,85	-3,3	6.403.389.311	7.914.463.755	23,6	9.054.945.138	10.580.620.380	16,9
Toplam İhracat(\$)/Total Export (\$)*	2.789.434.273,05	2.903.215.292,41	4,1	22.650.861.395	26.193.150.877	15,6	30.855.407.599	35.042.728.940	13,6

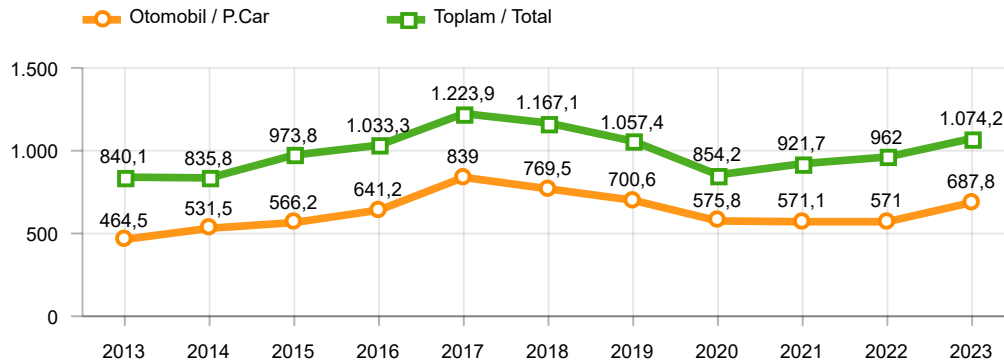
Parametreler/Parameters	9 - 2022	9 - 2023	%	1 - 9 / 2022	1 - 9 / 2023	%	10/2021 - 9/2022	10/2022 - 9/2023	%
ÜFE / PPI	4,8	3,4	-	82,5	36,1	-	114,0	65,6	-
TÜFE / CPI	3,1	4,8	-	52,4	49,9	-	59,9	55,3	-
Sanayi Endeksi / Industry Index	2,7	3,1	-	65,9	44,0	-	102,1	61,2	-
Dolar \$ ** (1 birim)	18,3	26,9	47,4	15,8	22,1	39,5	14,6	21,2	44,9
Euro € ** (1 birim)	18,1	28,8	59,0	16,8	23,9	42,5	15,8	22,7	44,0
Japon Yeni ¥ ** (100 birim)	12,7	18,1	42,6	12,3	15,9	29,1	11,6	15,2	30,3

*Toplam Sanayi / Total Industry Including Components

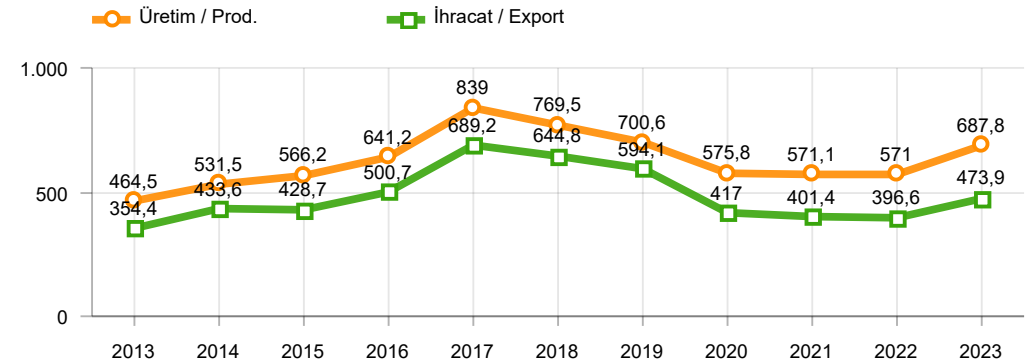
** Ortalama Değerler / Average Values

Araç Tipleri / Types	9 / 2022	9 / 2023	9 % Değişim	1-9 / 2022	1-9 / 2023	1-9 % Değişim
OTOMOBİL / Pass.Car	74.704	87.902	17,7	571.006	687.817	20,5
OTOMOBİL Toplam / Pass.Car Total	74.704	87.902	17,7	571.006	687.817	20,5
B.KAMYON / H. Truck	4.069	4.437	9,0	28.837	35.403	22,8
K.KAMYON / L. Truck	492	463	-5,9	3.562	3.885	9,1
KAMYONET / Pick Up	44.741	31.857	-28,8	314.530	294.485	-6,4
OTOBÜS / Bus	715	1.012	41,5	5.464	7.545	38,1
MİNİBÜS / Minibus	3.823	4.413	15,4	36.362	41.467	14,0
MİDİBÜS / Midibus	328	461	40,5	2.269	3.553	56,6
TİCARİ ARAÇLAR Toplam / Commercial Vehicles Total	54.168	42.643	-21,3	391.024	386.338	-1,2
TAŞIT ARAÇLARI Toplam / Motor Vehicles Total	128.872	130.545	1,3	962.030	1.074.155	11,7
TRAKTÖR / F.Tractor	4.786	5.177	8,2	34.908	43.465	24,5
TRAKTÖR Toplam / F.Tractor Total	4.786	5.177	8,2	34.908	43.465	24,5
GENEL TOPLAM / Grand Total	133.658	135.722	1,5	996.938	1.117.620	12,1

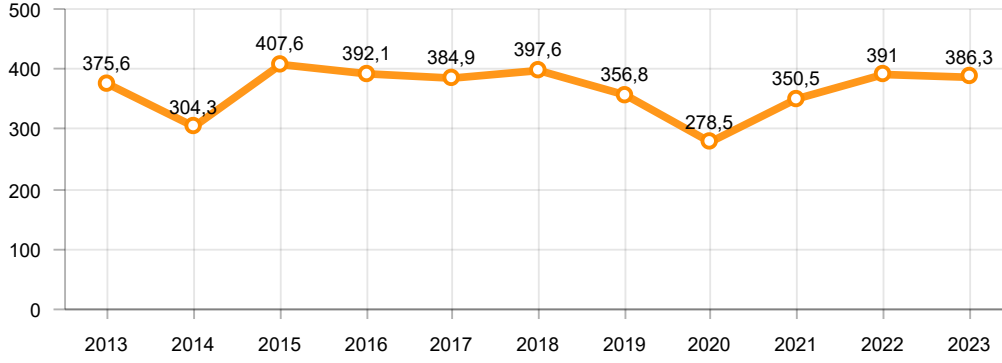
Toplam Üretim ve Otomobil Üretimi (x1000)(OCAK - EYLÜL)
Total & P.Cars Production (x1000)(January - September)



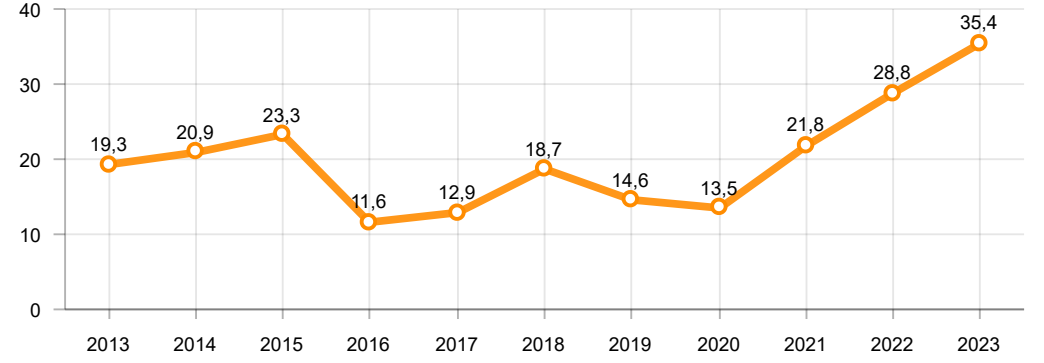
Otomobil Üretimi ve İhracat (x1000)(OCAK - EYLÜL)
P.Cars Production & Exports (x1000)(January - September)



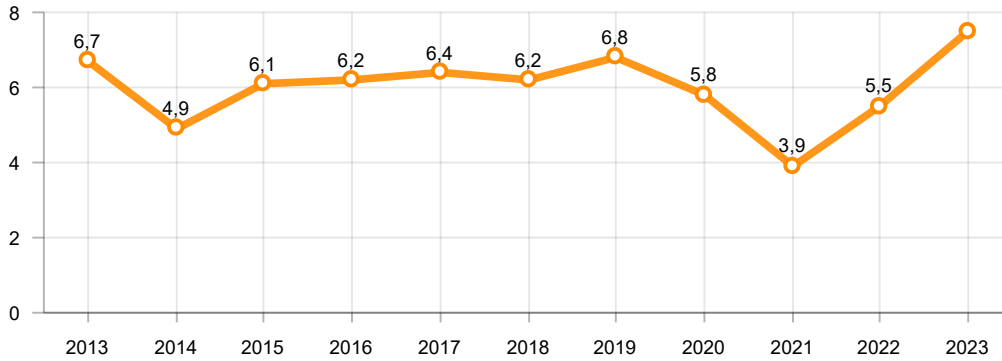
Ticari Araç Üretimi (x1000)(OCAK - EYLÜL)
Commercial Vehicle Production (x1000)(January - September)



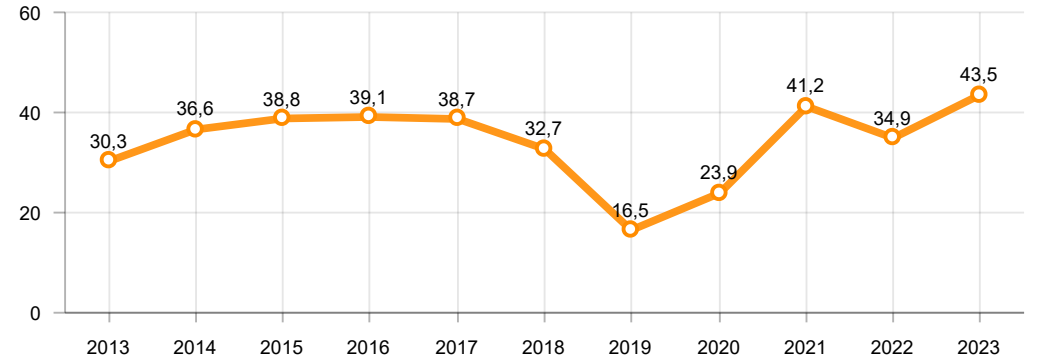
Büyük Kamyon Üretimi (x1000)(OCAK - EYLÜL)
Heavy Truck Production (x1000)(January - September)

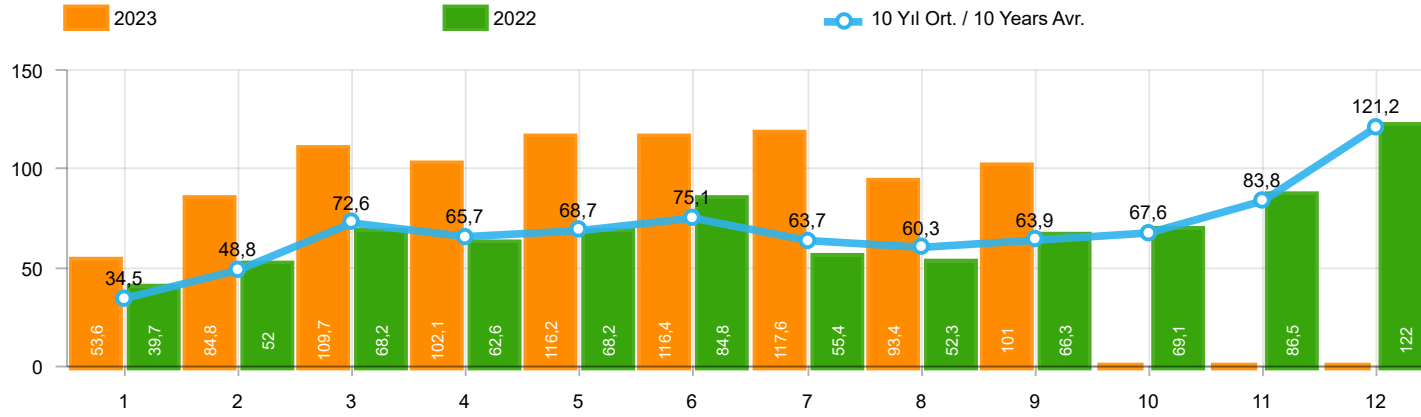


Otobüs Üretimi (x1000)(OCAK - EYLÜL)
Bus Production (x1000)(January - September)



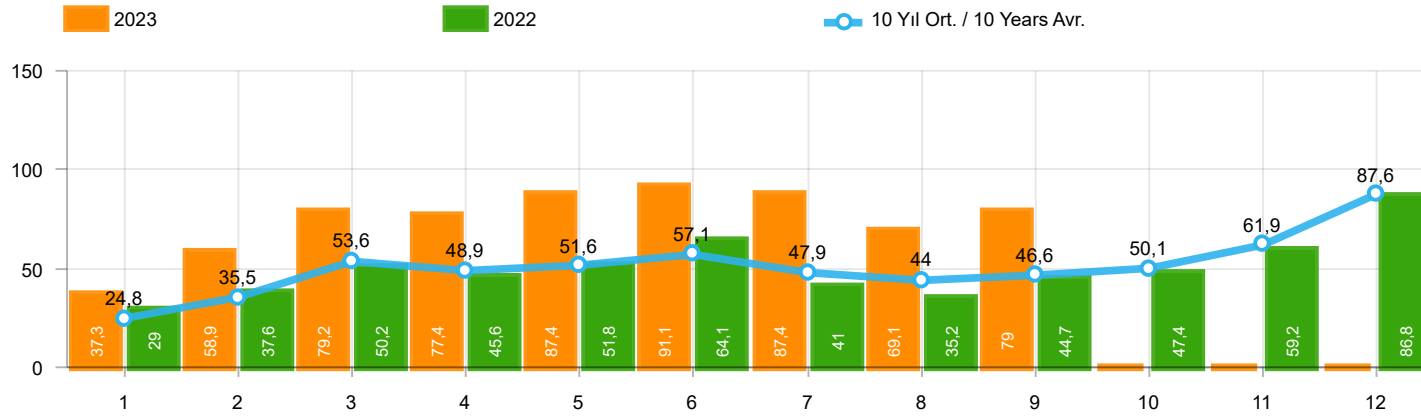
Traktör Üretimi (x1000)(OCAK - EYLÜL)
F. Tractor Production (x1000)(January - September)





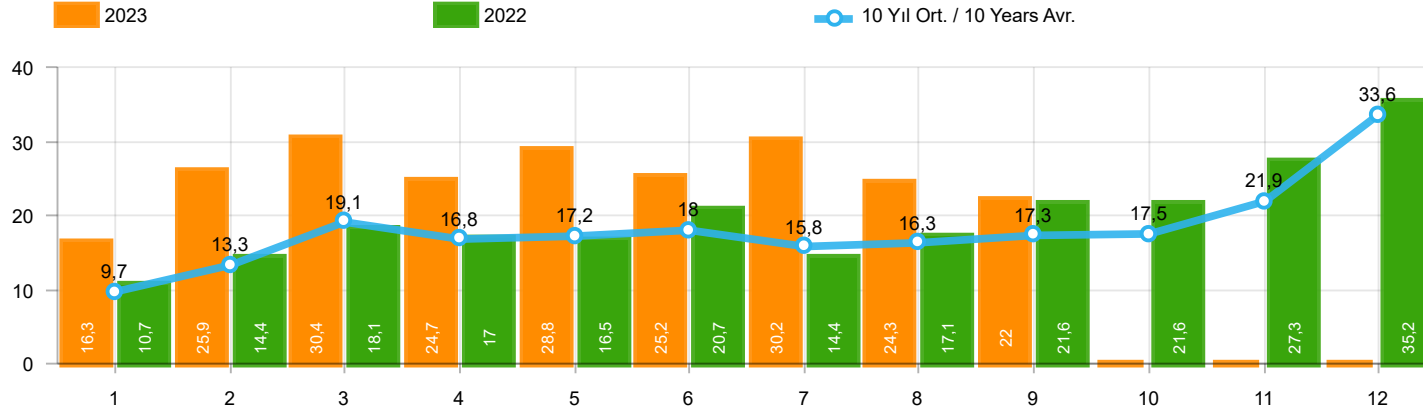
Aylar / Months	10 Yıl Ort. / 10 Years Avr.	2023	%
1	34.512	53.578	55,2
2	48.807	84.781	73,7
3	72.622	109.658	51,0
4	65.666	102.072	55,4
5	68.722	116.227	69,1
6	75.146	116.353	54,8
7	63.695	117.647	84,7
8	60.309	93.381	54,8
9	63.920	100.966	58,0
TOPLAM/TOTAL	553.402	894.663	61,7

Yıl / Year	1	2	3	4	5	6	7	8	9	10	11	12	1-9 Toplam / Total	Toplam / Total	1-9 Yerli / Local	1-9 İthal / Import	İthal Oran / Import %
2013	37.563	51.133	72.943	77.265	85.835	78.043	75.152	67.662	71.388	60.690	83.470	136.048	616.984	897.192	192.121	424.863	68,9
2014	34.751	37.659	51.312	57.113	62.447	64.295	62.770	63.303	70.764	69.742	84.368	154.843	504.414	813.367	171.815	332.599	65,9
2015	37.256	59.221	89.765	96.182	85.804	91.071	87.358	85.244	67.181	67.086	88.431	164.464	699.082	1.019.063	242.089	456.993	65,4
2016	34.369	54.840	85.932	87.748	97.090	94.666	59.732	73.654	69.413	85.666	125.462	145.706	657.444	1.014.278	211.443	446.001	67,8
2017	36.640	48.585	76.178	78.231	88.066	85.820	84.727	74.818	74.046	94.439	103.772	141.507	647.111	986.829	235.998	411.113	63,5
2018	36.525	48.768	79.600	73.886	74.996	52.788	54.194	35.137	23.915	22.321	59.406	80.014	479.809	641.550	182.876	296.933	61,9
2019	14.847	25.569	50.651	31.944	33.947	43.899	18.442	26.832	43.068	50.288	59.575	92.885	289.199	491.947	131.395	157.804	54,6
2020	28.123	48.948	51.554	27.165	33.308	72.789	89.419	63.570	93.406	97.125	82.824	107.919	508.282	796.150	232.633	275.649	54,2
2021	45.308	61.325	100.046	64.551	57.510	83.304	49.732	60.573	59.717	60.064	64.087	66.633	582.066	772.850	254.985	327.081	56,2
2022	39.741	52.030	68.241	62.584	68.221	84.788	55.424	52.297	66.304	69.072	86.499	121.962	549.630	827.163	245.544	304.086	55,3
2023	53.578	84.781	109.658	102.072	116.227	116.353	117.647	93.381	100.966				894.663	894.663	326.799	567.864	63,5



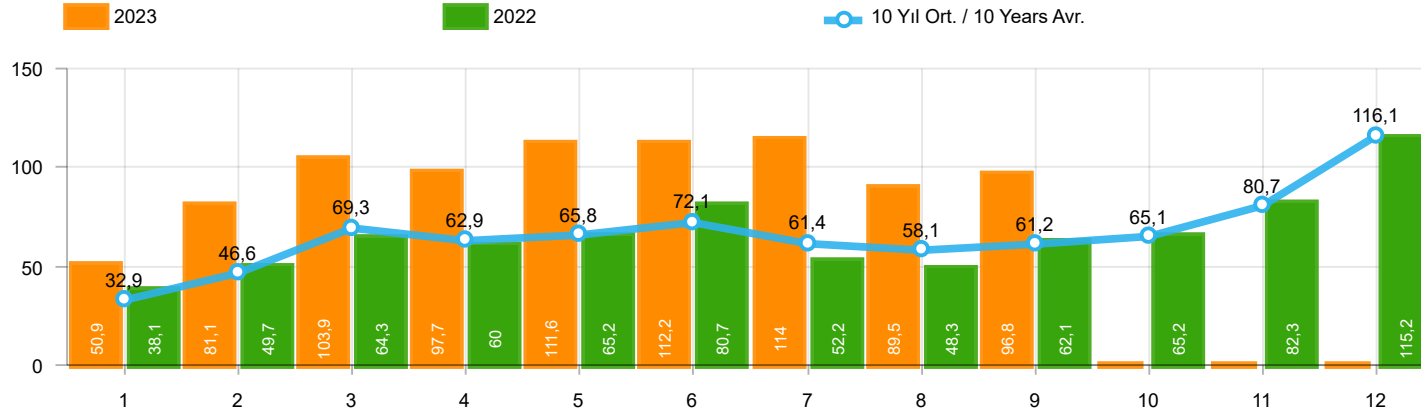
Aylar / Months	10 Yıl Ort. / 10 Years Avr.	2023	%
1	24.773	37.288	50,5
2	35.527	58.907	65,8
3	53.571	79.226	47,9
4	48.888	77.398	58,3
5	51.559	87.418	69,6
6	57.141	91.135	59,5
7	47.867	87.416	82,6
8	44.024	69.131	57,0
9	46.633	78.971	69,3
TOPLAM / TOTAL	409.982	666.890	62,7

Yıl / Year	1	2	3	4	5	6	7	8	9	10	11	12	1-9 Toplam / Total	Toplam / Total	1-9 Yerli / Local	1-9 İthal / Import	İthal Oran / Import %
2013	25.835	36.814	51.785	56.999	62.383	58.290	55.712	51.611	52.925	46.985	64.117	101.199	452.354	664.655	99.279	353.075	78,1
2014	24.368	27.167	37.812	42.769	46.379	47.278	46.602	45.131	49.262	50.814	59.695	110.054	366.768	587.331	94.199	272.569	74,3
2015	24.498	40.817	61.676	70.211	62.878	67.766	64.218	61.753	47.088	47.954	62.397	114.340	500.905	725.596	126.854	374.051	74,7
2016	23.358	40.588	63.975	65.618	73.832	71.111	45.566	53.977	51.340	63.746	95.783	108.044	489.365	756.938	118.694	370.671	75,7
2017	25.689	34.658	55.616	57.998	65.799	66.164	62.384	54.890	53.423	70.488	75.956	99.694	476.621	722.759	144.793	331.828	69,6
2018	26.611	35.901	59.798	55.108	57.227	41.225	42.024	26.976	17.595	16.809	46.204	60.843	362.465	486.321	121.022	241.443	66,6
2019	10.979	19.205	38.628	24.416	27.126	36.024	15.398	21.544	35.308	39.996	47.803	70.829	228.628	387.256	98.905	129.723	56,7
2020	22.016	37.727	39.887	21.825	25.073	57.067	69.427	44.372	71.296	76.341	64.357	80.721	388.690	610.109	156.367	232.323	59,8
2021	35.358	44.749	76.357	48.375	43.138	62.348	36.311	44.756	43.408	40.512	42.982	43.559	434.800	561.853	174.147	260.653	59,9
2022	29.020	37.641	50.173	45.564	51.750	64.134	41.031	35.230	44.681	47.440	59.222	86.774	399.224	592.660	153.909	245.315	61,4
2023	37.288	58.907	79.226	77.398	87.418	91.135	87.416	69.131	78.971				666.890	666.890	209.362	457.528	68,6



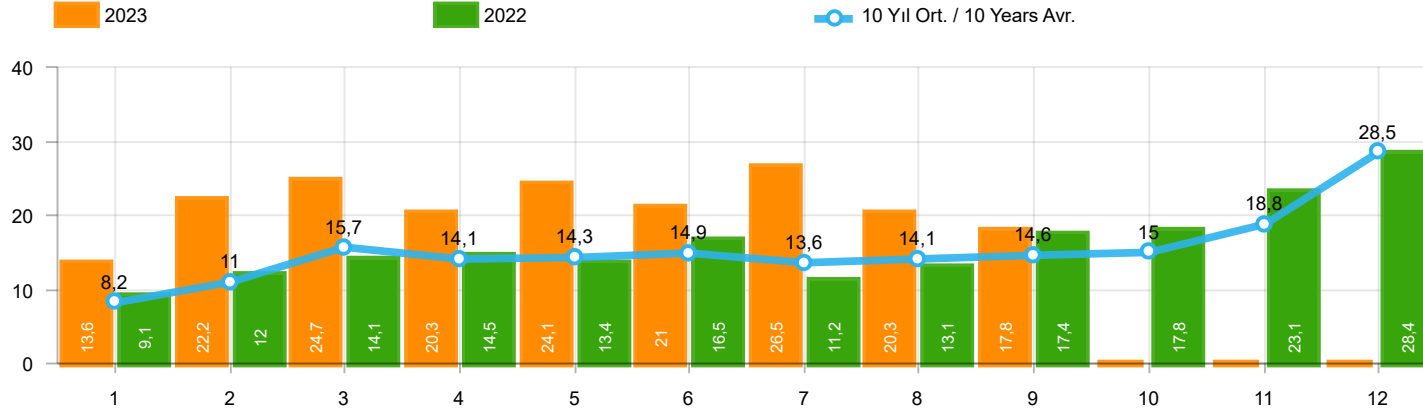
Aylar / Months	10 Yıl Ort. / 10 Years Avr.	2023	%
1	9.739	16.290	67,3
2	13.281	25.874	94,8
3	19.052	30.432	59,7
4	16.779	24.674	47,1
5	17.164	28.809	67,8
6	18.006	25.218	40,1
7	15.828	30.231	91,0
8	16.285	24.250	48,9
9	17.288	21.995	27,2
TOPLAM / TOTAL	143.420	227.773	58,8

Yıl / Year	1	2	3	4	5	6	7	8	9	10	11	12	1-9 Toplam / Total	Toplam / Total	1-9 Yerli / Local	1-9 İthal / Import	İthal Oran / Import %
2013	11.728	14.319	21.158	20.266	23.452	19.753	19.440	16.051	18.463	13.705	19.353	34.849	164.630	232.537	92.842	71.788	43,6
2014	10.383	10.492	13.500	14.344	16.068	17.017	16.168	18.172	21.502	18.928	24.673	44.789	137.646	226.036	77.616	60.030	43,6
2015	12.758	18.404	28.089	25.971	22.926	23.305	23.140	23.491	20.093	19.132	26.034	50.124	198.177	293.467	115.235	82.942	41,9
2016	11.011	14.252	21.957	22.130	23.258	23.555	14.166	19.677	18.073	21.920	29.679	37.662	168.079	257.340	92.749	75.330	44,8
2017	10.951	13.927	20.562	20.233	22.267	19.656	22.343	19.928	20.623	23.951	27.816	41.813	170.490	264.070	91.205	79.285	46,5
2018	9.914	12.867	19.802	18.778	17.769	11.563	12.170	8.161	6.320	5.512	13.202	19.171	117.344	155.229	61.854	55.490	47,3
2019	3.868	6.364	12.023	7.528	6.821	7.875	3.044	5.288	7.760	10.292	11.772	22.056	60.571	104.691	32.490	28.081	46,4
2020	6.107	11.221	11.667	5.340	8.235	15.722	19.992	19.198	22.110	20.784	18.467	27.198	119.592	186.041	76.266	43.326	36,2
2021	9.950	16.576	23.689	16.176	14.372	20.956	13.421	15.817	16.309	19.552	21.105	23.074	147.266	210.997	80.838	66.428	45,1
2022	10.721	14.389	18.068	17.020	16.471	20.654	14.393	17.067	21.623	21.632	27.277	35.188	150.406	234.503	91.635	58.771	39,1
2023	16.290	25.874	30.432	24.674	28.809	25.218	30.231	24.250	21.995				227.773	227.773	117.437	110.336	48,4



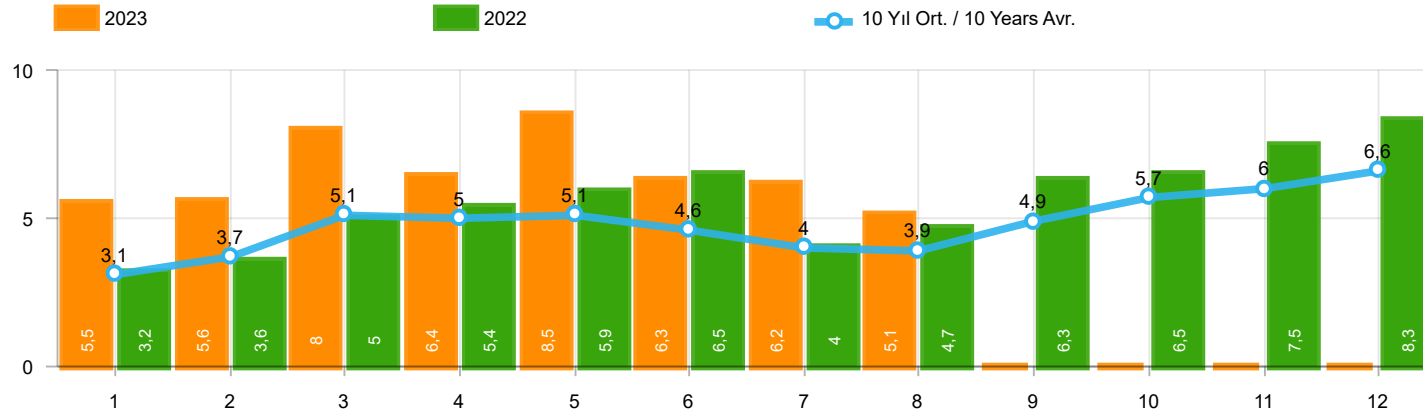
Aylar / Months	10 Yıl Ort / 10 Years Avr.	2023	%
1	32.943	50.894	54,5
2	46.561	81.148	74,3
3	69.268	103.929	50,0
4	62.943	97.679	55,2
5	65.836	111.556	69,4
6	72.078	112.163	55,6
7	61.429	113.959	85,5
8	58.083	89.454	54,0
9	61.233	96.793	58,1
TOPLAM / TOTAL	530.373	857.575	61,7

Yıl / Year	1	2	3	4	5	6	7	8	9	10	11	12	1-9 Toplam / Total	Toplam / Total	1-9 Yerli / Local	1-9 İthal / Import	İthal Oran / Import %
2013	35.523	48.307	68.774	73.575	81.468	74.096	71.596	65.043	67.963	58.014	79.301	129.718	586.345	853.378	168.578	417.767	71,2
2014	32.670	35.021	47.581	53.305	58.121	60.163	59.907	60.199	66.531	66.573	80.621	146.989	473.498	767.681	148.365	325.133	68,7
2015	34.615	55.331	83.302	91.602	81.542	86.158	83.836	82.577	64.025	64.255	84.601	156.173	662.988	968.017	215.385	447.603	67,5
2016	32.713	52.825	82.948	84.887	93.904	91.540	58.533	71.556	67.593	83.000	122.309	141.912	636.499	983.720	195.860	440.639	69,2
2017	35.323	46.965	73.802	75.988	85.422	83.658	82.297	72.536	71.352	91.752	100.859	136.240	627.343	956.194	221.520	405.823	64,7
2018	35.076	47.009	76.345	71.126	72.755	51.037	52.734	34.346	23.028	21.571	58.204	77.706	463.456	620.937	172.004	291.452	62,9
2019	14.373	24.875	49.221	30.971	33.016	42.688	17.927	26.246	41.992	49.075	58.176	90.500	281.309	479.060	126.010	155.299	55,2
2020	27.273	47.122	50.008	26.457	32.235	70.973	87.401	61.533	90.619	94.733	80.141	104.293	493.621	772.788	222.514	271.107	54,9
2021	43.728	58.504	96.428	61.488	54.734	79.819	47.849	58.454	57.141	56.746	60.216	62.243	558.145	737.350	240.197	317.948	57,0
2022	38.131	49.652	64.267	60.035	65.167	80.652	52.206	48.336	62.084	65.222	82.311	115.220	520.530	783.283	226.000	294.530	56,6
2023	50.894	81.148	103.929	97.679	111.556	112.163	113.959	89.454	96.793				857.575	857.575	301.796	555.779	64,8



Aylar / Months	10 Yıl Ort / 10 Years Avr.	2023	%
1	8.169	13.606	66,6
2	11.034	22.241	101,6
3	15.697	24.703	57,4
4	14.055	20.281	44,3
5	14.278	24.138	69,1
6	14.938	21.028	40,8
7	13.561	26.543	95,7
8	14.059	20.323	44,6
9	14.600	17.822	22,1
TOPLAM / TOTAL	120.391	190.685	58,4

Yıl / Year	1	2	3	4	5	6	7	8	9	10	11	12	1-9 Toplam / Total	Toplam / Total	1-9 Yerli / Local	1-9 İthal / Import	İthal Oran / Import %
2013	9.688	11.493	16.989	16.576	19.085	15.806	15.884	13.432	15.038	11.029	15.184	28.519	133.991	188.723	69.299	64.692	48,3
2014	8.302	7.854	9.769	10.536	11.742	12.885	13.305	15.068	17.269	15.759	20.926	36.935	106.730	180.350	54.166	52.564	49,2
2015	10.117	14.514	21.626	21.391	18.664	18.392	19.618	20.824	16.937	16.301	22.204	41.833	162.083	242.421	88.531	73.552	45,4
2016	9.355	12.237	18.973	19.269	20.072	20.429	12.967	17.579	16.253	19.254	26.526	33.868	147.134	226.782	77.166	69.968	47,6
2017	9.634	12.307	18.186	17.990	19.623	17.494	19.913	17.646	17.929	21.264	24.903	36.546	150.722	233.435	76.727	73.995	49,1
2018	8.465	11.108	16.547	16.018	15.528	9.812	10.710	7.370	5.433	4.762	12.000	16.863	100.991	134.616	50.982	50.009	49,5
2019	3.394	5.670	10.593	6.555	5.890	6.664	2.529	4.702	6.684	9.079	10.373	19.671	52.681	91.804	27.105	25.576	48,5
2020	5.257	9.395	10.121	4.632	7.162	13.906	17.974	17.161	19.323	18.392	15.784	23.572	104.931	162.679	66.147	38.784	37,0
2021	8.370	13.755	20.071	13.113	11.596	17.471	11.538	13.698	13.733	16.234	17.234	18.684	123.345	175.497	66.050	57.295	46,5
2022	9.111	12.011	14.094	14.471	13.417	16.518	11.175	13.106	17.403	17.782	23.089	28.446	121.306	190.623	72.091	49.215	40,6
2023	13.606	22.241	24.703	20.281	24.138	21.028	26.543	20.323	17.822				190.685	190.685	92.434	98.251	51,5



Aylar / Months	10 Yıl Ort / 10 Years Avr.	2023	%
1	3.083	5.533	79,5
2	3.701	5.569	50,5
3	5.145	7.959	54,7
4	5.014	6.433	28,3
5	5.055	8.511	68,4
6	4.576	6.269	37,0
7	3.957	6.221	57,2
8	3.888	5.072	30,5
TOPLAM / TOTAL	34.418	51.567	49,8

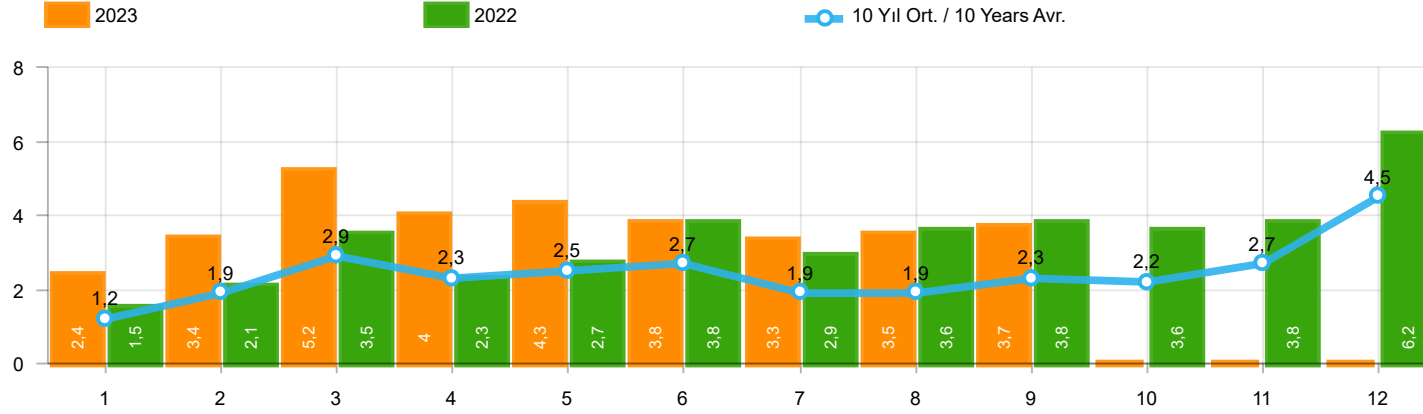
Yıl / Year	1	2	3	4	5	6	7	8	9	10	11	12	1-8 Toplam / Total	Toplam / Total
2013	2.161	2.432	4.005	4.585	5.616	3.136	4.574	3.408	4.935	4.762	5.781	6.891	29.917	52.286
2014	2.169	3.512	4.476	4.905	5.094	5.028	4.233	4.920	5.619	5.743	6.250	7.409	34.337	59.358
2015	3.124	3.984	5.460	6.383	6.078	5.748	4.677	5.044	4.765	7.049	6.898	7.564	40.498	66.774
2016	3.739	4.731	7.067	6.546	6.575	5.543	3.833	5.134	4.945	7.372	7.090	7.603	43.168	70.178
2017	3.974	4.964	6.773	6.780	7.057	5.356	5.003	4.396	6.064	7.734	7.457	7.351	44.303	72.909
2018	4.362	4.179	5.925	5.216	4.584	3.146	3.654	2.587	3.541	3.698	3.578	3.886	33.653	48.356
2019	1.311	1.401	2.143	2.126	2.229	1.538	2.039	1.579	2.284	2.828	3.037	3.782	14.366	26.297
2020	2.425	2.778	3.771	2.606	3.244	4.173	3.727	3.974	4.928	5.466	5.831	6.221	26.698	49.144
2021	4.411	5.395	6.845	5.581	4.200	5.571	3.846	3.093	6.100	5.351	6.901	6.776	38.942	64.070
2022	3.152	3.636	4.988	5.408	5.873	6.520	3.985	4.740	6.265	6.542	7.514	8.319	38.302	66.942
2023	5.533	5.569	7.959	6.433	8.511	6.269	6.221	5.072	-	-	-	-	51.567	51.567

Kaynak: TÜİK trafik kayıtları.

Rakamlar, son iki model yılına ait traktör tescillerinden oluşmaktadır.

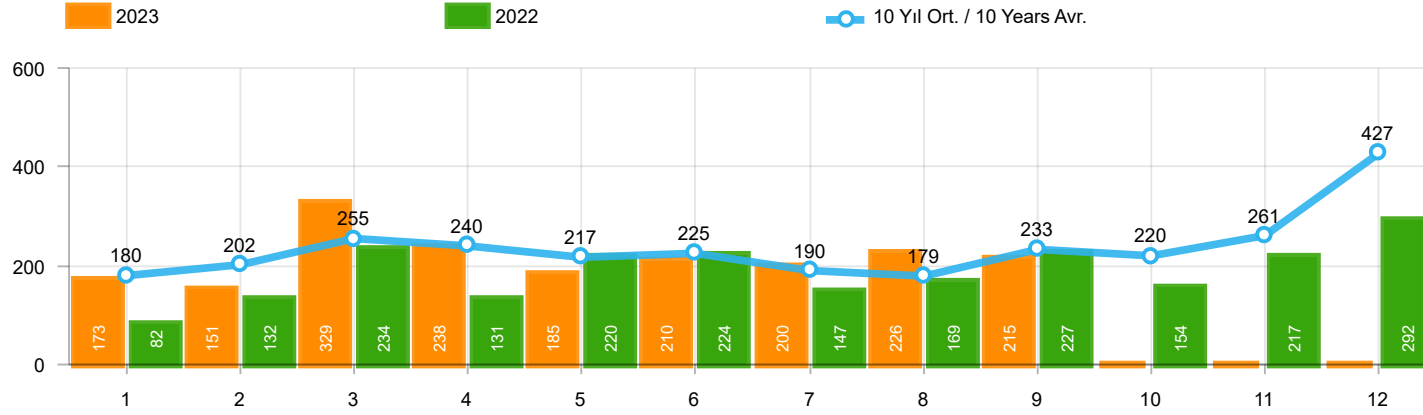
Source: Turkish Statistical Institute – Traffic registrations

Data represents the last two model year's farm tractors registration figures



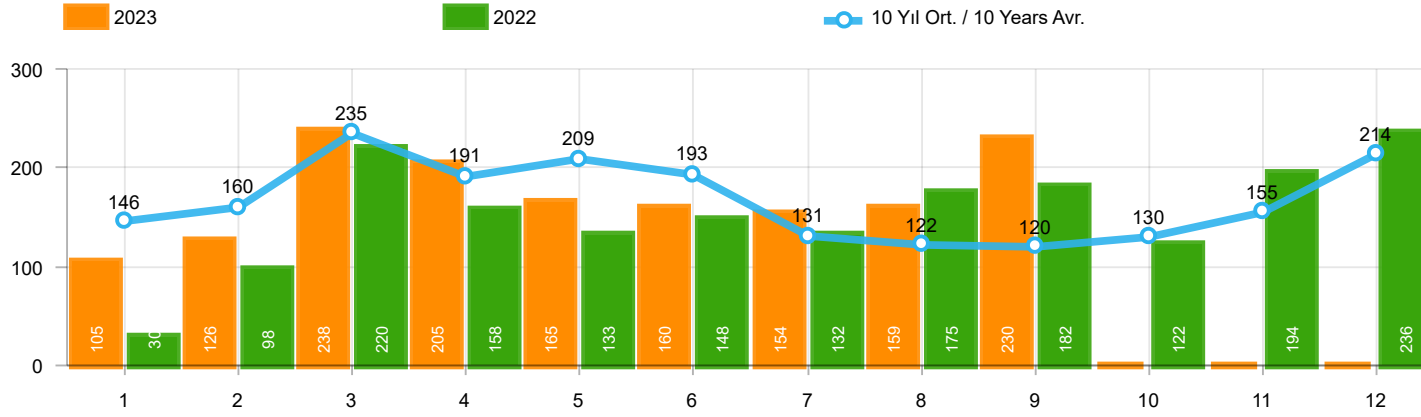
Aylar / Months	10 Yıl Ort / 10 Years Avr.	2023	%
1	1.244	2.406	93,3
2	1.885	3.356	78,0
3	2.865	5.162	80,2
4	2.293	3.950	72,3
5	2.460	4.321	75,6
6	2.650	3.820	44,1
7	1.945	3.334	71,4
8	1.925	3.542	84,0
9	2.335	3.728	59,7
TOPLAM / TOTAL	19.602	33.619	71,5

Yıl / Year	1	2	3	4	5	6	7	8	9	10	11	12	1-9 Toplam / Total	Toplam / Total	1-9 Yerli / Local	1-9 İthal / Import	İthal Oran / Import %
2013	1.484	2.113	3.343	2.925	3.504	3.186	2.777	2.103	2.875	2.086	3.631	5.444	24.310	35.471	17.241	7.069	29,1
2014	1.522	2.065	3.094	3.224	3.727	3.726	2.578	2.783	3.708	2.858	3.384	6.869	26.427	39.538	19.114	7.313	27,7
2015	2.215	3.346	5.699	3.729	3.600	4.253	2.922	2.211	2.687	2.266	3.146	7.307	30.662	43.381	21.341	9.321	30,4
2016	1.167	1.648	2.515	2.319	2.711	2.623	984	1.796	1.438	2.238	2.485	3.127	17.201	25.051	11.870	5.331	31,0
2017	931	1.290	1.982	1.888	2.184	1.891	1.974	1.860	2.284	2.188	2.487	4.438	16.284	25.397	11.008	5.276	32,4
2018	1.237	1.552	2.630	2.328	1.909	1.272	1.235	603	653	488	905	1.695	13.419	16.507	7.949	5.470	40,8
2019	342	579	1.255	842	728	981	435	497	854	1.047	1.100	2.087	6.513	10.747	4.008	2.505	38,5
2020	682	1.475	1.290	628	921	1.570	1.809	1.835	2.660	2.239	2.537	3.358	12.870	21.004	8.328	4.542	35,3
2021	1.366	2.633	3.319	2.788	2.617	3.238	1.799	1.942	2.377	3.067	3.549	4.045	22.079	32.740	12.946	9.133	41,4
2022	1.498	2.148	3.520	2.260	2.701	3.764	2.939	3.617	3.811	3.574	3.777	6.214	26.258	39.823	16.702	9.556	36,4
2023	2.406	3.356	5.162	3.950	4.321	3.820	3.334	3.542	3.728				33.619	33.619	21.534	12.085	35,9



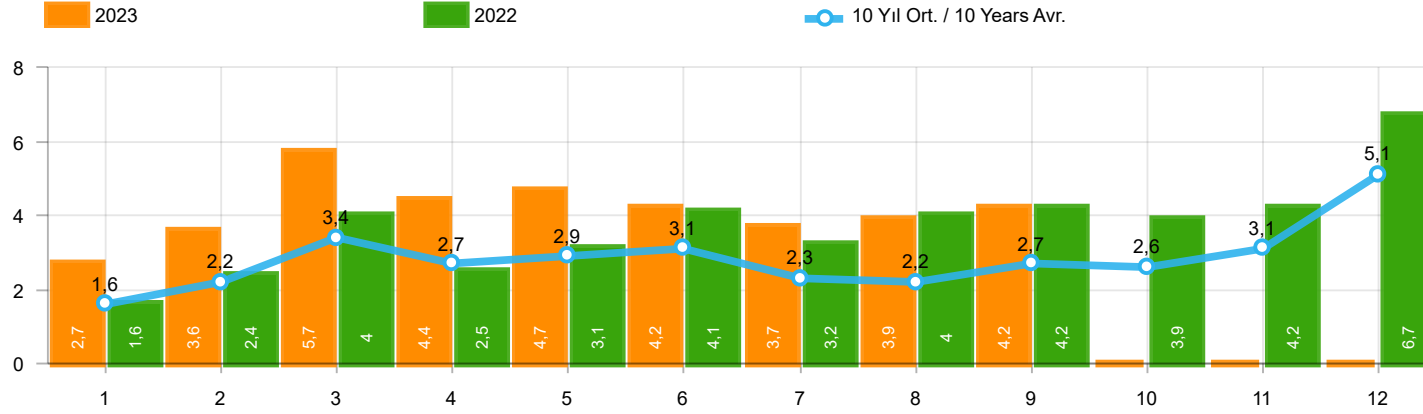
Aylar / Months	10 Yıl Ort / 10 Years Avr.	2023	%
1	180	173	-3,8
2	202	151	-25,1
3	255	329	28,8
4	240	238	-,7
5	217	185	-14,7
6	225	210	-6,6
7	190	200	5,4
8	179	226	26,0
9	233	215	-7,7
TOPLAM / TOTAL	1.921	1.927	0,3

Yıl / Year	1	2	3	4	5	6	7	8	9	10	11	12	1-9 Toplam / Total	Toplam / Total
2013	191	268	289	276	283	241	367	235	305	392	415	697	2.455	3.959
2014	360	394	384	333	294	258	216	229	395	220	266	653	2.863	4.002
2015	280	322	451	561	372	405	389	253	316	394	325	621	3.349	4.689
2016	309	158	251	302	261	196	139	220	241	230	354	431	2.077	3.092
2017	212	211	227	231	272	156	250	235	318	268	317	594	2.112	3.291
2018	134	142	410	296	207	315	180	146	160	155	184	425	1.990	2.754
2019	57	61	63	96	106	189	55	44	138	138	257	244	809	1.448
2020	104	221	128	35	97	134	111	123	77	71	82	137	1.030	1.320
2021	70	108	117	135	58	131	44	139	153	178	188	172	955	1.493
2022	82	132	234	131	220	224	147	169	227	154	217	292	1.566	2.229
2023	173	151	329	238	185	210	200	226	215				1.927	1.927



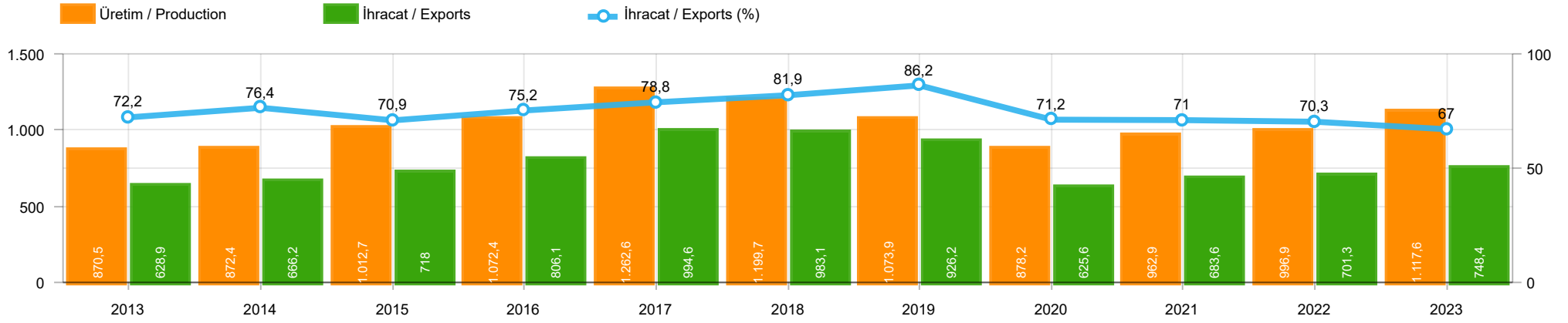
Aylar / Months	10 Yıl Ort / 10 Years Avr.	2023	%
1	146	105	-27,8
2	160	126	-21,3
3	235	238	1,5
4	191	205	7,4
5	209	165	-21,0
6	193	160	-16,9
7	131	154	17,2
8	122	159	29,9
9	120	230	92,1
TOPLAM / TOTAL	1.506	1.542	2,4

Yıl / Year	1	2	3	4	5	6	7	8	9	10	11	12	1-9 Toplam / Total	Toplam / Total	1-9 Yerli / Local	1-9 İthal / Import	İthal Oran / Import %
2013	365	445	537	489	580	520	412	281	245	198	123	189	3.874	4.384	3.847	27	0,7
2014	199	179	253	251	305	148	69	92	130	91	97	332	1.626	2.146	1.473	153	9,4
2015	146	222	313	290	290	255	211	203	153	171	359	363	2.083	2.976	2.014	69	3,3
2016	180	209	218	240	214	307	76	82	141	198	314	236	1.667	2.415	1.636	31	1,9
2017	174	119	167	124	188	115	206	187	92	231	109	235	1.372	1.947	1.358	14	1,0
2018	78	65	215	136	125	164	45	42	74	107	113	188	944	1.352	933	11	1,2
2019	75	54	112	35	97	41	25	45	84	28	42	54	568	692	568	-	-
2020	64	130	128	45	55	112	98	79	50	82	64	131	761	1.038	761	-	-
2021	144	80	182	140	101	116	40	38	46	73	134	173	887	1.267	887	-	-
2022	30	98	220	158	133	148	132	175	182	122	194	236	1.276	1.828	1.276	-	-
2023	105	126	238	205	165	160	154	159	230				1.542	1.542	1.542	-	-



Aylar / Months	10 Yıl Ort. / 10 Years Avr.	2023	%
1	1.570	2.684	71,0
2	2.247	3.633	61,7
3	3.355	5.729	70,8
4	2.724	4.393	61,3
5	2.886	4.671	61,9
6	3.068	4.190	36,6
7	2.266	3.688	62,7
8	2.226	3.927	76,4
9	2.687	4.173	55,3
TOPLAM / TOTAL	23.029	37.088	61,1

Yıl / Year	1	2	3	4	5	6	7	8	9	10	11	12	1-9 Toplam / Total	Toplam / Total	1-9 Yerli / Local	1-9 İthal / Import	İthal Oran / Import %
2013	2.040	2.826	4.169	3.690	4.367	3.947	3.556	2.619	3.425	2.676	4.169	6.330	30.639	43.814	23.543	7.096	23,2
2014	2.081	2.638	3.731	3.808	4.326	4.132	2.863	3.104	4.233	3.169	3.747	7.854	30.916	45.686	23.450	7.466	24,1
2015	2.641	3.890	6.463	4.580	4.262	4.913	3.522	2.667	3.156	2.831	3.830	8.291	36.094	51.046	26.704	9.390	26,0
2016	1.656	2.015	2.984	2.861	3.186	3.126	1.199	2.098	1.820	2.666	3.153	3.794	20.945	30.558	15.583	5.362	25,6
2017	1.317	1.620	2.376	2.243	2.644	2.162	2.430	2.282	2.694	2.687	2.913	5.267	19.768	30.635	14.478	5.290	26,8
2018	1.449	1.759	3.255	2.760	2.241	1.751	1.460	791	887	750	1.202	2.308	16.353	20.613	10.872	5.481	33,5
2019	474	694	1.430	973	931	1.211	515	586	1.076	1.213	1.399	2.385	7.890	12.887	5.385	2.505	31,7
2020	850	1.826	1.546	708	1.073	1.816	2.018	2.037	2.787	2.392	2.683	3.626	14.661	23.362	10.119	4.542	31,0
2021	1.580	2.821	3.618	3.063	2.776	3.485	1.883	2.119	2.576	3.318	3.871	4.390	23.921	35.500	14.788	9.133	38,2
2022	1.610	2.378	3.974	2.549	3.054	4.136	3.218	3.961	4.220	3.850	4.188	6.742	29.100	43.880	19.544	9.556	32,8
2023	2.684	3.633	5.729	4.393	4.671	4.190	3.688	3.927	4.173				37.088	37.088	25.003	12.085	32,6



	2013	2014	2015	2016	2017	2018	2019	2020	2021	2022	2023
İhracat/Export	628.879	666.234	717.999	806.075	994.640	983.085	926.183	625.645	683.629	701.295	748.418
Üretim/Production	870.469	872.431	1.012.671	1.072.419	1.262.599	1.199.727	1.073.857	878.166	962.866	996.938	1.117.620
İhracat/Exports (%)	72,2	76,4	70,9	75,2	78,8	81,9	86,2	71,2	71	70,3	67

SEKTÖR / SECTOR	2021	2022	1/9-2022	1/9-2023	2023/2022 %
OTOMOBİL / Pass.Car	565.370	571.218	396.602	473.850	19,5
OTOMOBİL TOPLAM / Pass. Car Total	565.370	571.218	396.602	473.850	19,5
KAMYON / Truck	17.293	20.123	14.321	15.407	7,6
KAMYONET / Pick Up	310.874	335.148	245.313	207.755	-15,3
OTOBÜS / Bus	4.750	6.579	4.085	6.465	58,3
MİNİBÜS / Minibus	37.741	36.016	27.001	29.335	8,6
MİDİBÜS / Midibus	987	1.040	642	1.144	78,2
TİCARİ ARAÇLAR TOPLAM / Commercial Vehicle Total	371.645	398.906	291.362	260.106	-10,7
TAŞIT ARAÇLARI TOPLAM / Motor Vehicles Total	937.015	970.124	687.964	733.956	6,7
TRAKTÖR / F.Tractor	17.038	18.154	13.331	14.462	8,5
TRAKTÖR TOPLAM / F.Tractor Total	17.038	18.154	13.331	14.462	8,5
GENEL TOPLAM / GRAND TOTAL	954.053	988.278	701.295	748.418	6,7

Üretici Bazında İhracat (adet)
Exports by Manufacturer (unit)

Üreticiler / Manufacturers	2021	2022	1-9 / 2022	1-9 / 2023
A.I.O.S.	1.100	911	516	769
FORD OTOSAN	287.609	297.828	219.881	228.342
HATTAT TRAKTÖR	862	1.059	796	560
HYUNDAI ASSAN	138.739	176.664	132.058	151.482
KARSAN	2.135	301	165	233
M. BENZ TÜRK	13.911	15.674	10.783	12.479
MAN TÜRKİYE	1.573	1.786	1.128	1.924
OTOKAR	749	1.506	704	1.611
OYAK RENAULT	187.923	176.844	102.163	156.440
TEMSA	599	587	379	860
TOFAŞ	112.465	121.477	87.304	42.389
TOYOTA	187.907	176.546	132.883	137.427
TÜRK TRAKTÖR	16.176	17.095	12.535	13.902
GENEL TOPLAM / Grand Total	951.748	988.278	701.295	748.418

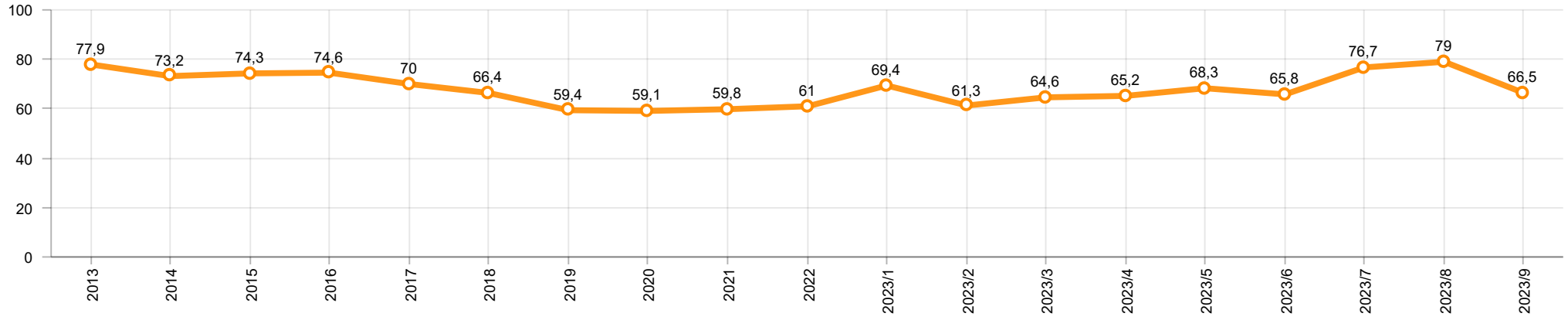
Otomotiv Ana ve Yan Sanayii İhracatı (ABD \$)
CBU and CKD Exports - \$

Sektör / Sector	2021	2022	OCAK - EYLÜL / January - September 2022	OCAK - EYLÜL / January - September 2023	2023 / 2022 %
Toplam Yan Sanayi / Total Component Industry	11.824.049.653,01	12.831.129.592,62	9.551.302.241,99	10.590.653.216,71	10,9
İç ve Dış Lastik / Tyres	1.630.367.018,49	1.767.320.167	1.360.398.898,63	1.352.513.895,74	-0,6
Emniyet Camı / Safety Glasses	203.192.140,55	234.466.834,44	174.452.159,88	199.660.928,29	14,5
Motor / Engine	296.695.616,13	233.029.231,53	186.916.795,3	194.739.808,25	4,2
Akümülatör / Batteries	509.199.445,03	547.895.439,61	387.615.616,01	343.251.319,84	-11,4
Diğer Aksam ve Parça / Spare Parts&Components	9.184.595.432,81	10.048.417.920,04	7.441.918.772,17	8.500.487.264,59	14,2
Toplam Ana Sanayi / Total Vehicle Industry	18.048.636.689,96	18.677.239.435,86	13.099.559.153,2	15.602.497.659,82	19,1
Otobüs / Bus	1.014.817.251,08	1.201.795.118,6	733.766.650,69	1.210.632.711,75	65,0
Midibüs-Minibüs / Midibus-Minibus	193.913.261,22	163.044.669,04	118.902.740,87	222.162.753,34	86,8
Otomobil / P.Cars	9.272.072.907,39	9.069.547.725,1	6.403.389.311,43	7.914.463.754,91	23,6
Kamyon-Kamyonet / Truck-Pick Up&Van	5.420.090.951,32	5.633.803.021,79	4.035.260.691,08	4.115.172.799,53	2,0
Römork ve Yarı Römork / Trailer-Semi Trailer	609.758.049,6	763.209.294,39	533.232.425,33	566.221.906,95	6,2
Çekici / Tractor	1.018.262.590,07	1.266.205.170,15	886.158.865,8	1.102.542.959,82	24,4
Tarım Traktörü / Farm Tractor	519.721.679,28	579.634.436,79	388.848.468	471.300.773,52	21,2
Toplam / Total	29.872.686.342,97	31.508.369.028,48	22.650.861.395,19	26.193.150.876,53	15,6

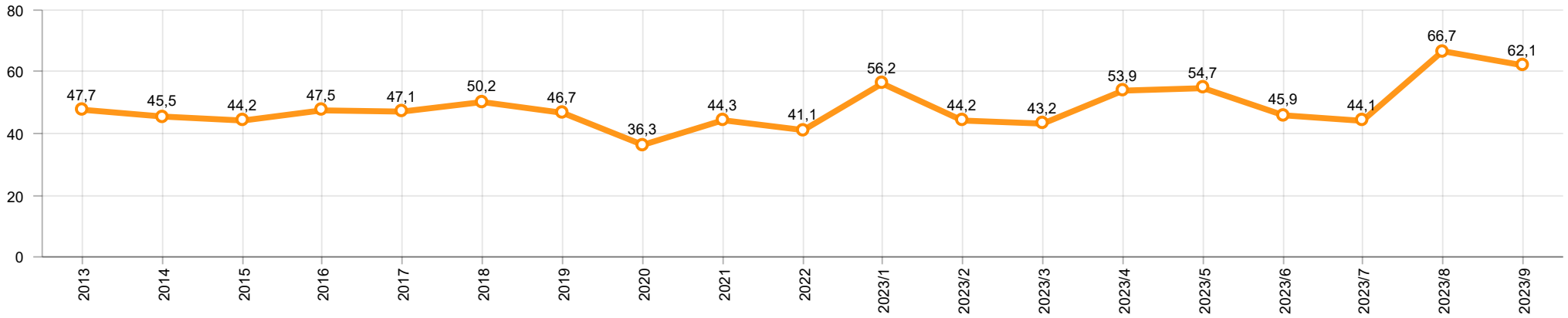
Kaynak: Uludağ İhracatçı Birlikleri . ÜİB tarafından OSD için özel olarak analiz edilen Otomotiv İhracatı kapsamında; ÜİB Türkiye Geneli Otomotiv Endüstrisi sınıflandırmasına kıyasla “Römork ve Yarı Römork” , “Tarım Traktörü” verileri dahil edilmekte; “Kullanılmış Araçlar” , “İki Tekerlekli Taşıtlar” , “Demiryolu Taşıtları” hariç tutulmaktadır.

Source: Uludağ Exporters Association – Special Analyze for OSD.Compared to Turkish General Automotive Industry classification, this special analyze includes; farms tractors, trailers and semi-trailers, does not include; used vehicles, two-wheeled vehicles and railway vehicles

Otomobil Pazarında İthalatın Payı (%)
Import Share in P.Car Market (%)



Hafif Ticari Araçlar Pazarında İthalatın Payı (%)
Import Share in LCV Market (%)



Araç Tipleri / Vehicle Types	1	2	3	4	5	6	7	8	9	10	11	12	Toplam / Total
OTOMOBİL - Pass.Car	51.122	46.473	59.168	48.634	58.456	61.620	50.196	50.263	47.918				473.850
KAMYON - H. Truck	1.294	1.789	1.757	1.222	1.834	1.701	2.026	1.557	2.038				15.218
K.KAMYON - L. Truck	25	18	19	1	33	60	11	3	19				189
KAMYONET - Pick Up	23.167	26.083	29.741	21.455	21.723	23.148	24.290	14.905	23.243				207.755
OTOBÜS - Bus	479	584	754	709	788	758	756	757	880				6.465
MİNİBÜS - Minibus	3.212	3.734	4.144	3.268	3.070	3.174	3.453	2.305	2.975				29.335
MİDİBÜS - Midibus	82	82	118	122	115	188	143	159	135				1.144
TİCARİ ARAÇLAR TOPLAMI - CV Total	28.259	32.290	36.533	26.777	27.563	29.029	30.679	19.686	29.290				260.106
TAŞIT ARAÇLARI TOPLAMI - MV Total	79.381	78.763	95.701	75.411	86.019	90.649	80.875	69.949	77.208				733.956
TRAKTÖR - F.Tractor	1.718	1.698	1.813	1.681	1.680	1.605	1.677	1.216	1.374				14.462
GENEL TOPLAM - Grand Total	81.099	80.461	97.514	77.092	87.699	92.254	82.552	71.165	78.582				748.418

Otomobil / P.Car

Firmalar / Firms	1	2	3	4	5	6	7	8	9	10	11	12	Toplam / Total
FORD OTOSAN	-	-	-	-	-	-	-	-	-	-	-	-	-
HYUNDAI ASSAN	20.026	16.310	18.880	16.060	18.470	14.304	18.197	10.515	18.720	-	-	-	151.482
OYAK RENAULT	9.728	18.194	20.350	14.713	20.315	28.215	14.138	21.311	9.476	-	-	-	156.440
TOFAŞ	507	1.646	2.954	3.171	3.998	3.393	4.020	2.862	5.950	-	-	-	28.501
TOYOTA	20.861	10.323	16.984	14.690	15.673	15.708	13.841	15.575	13.772	-	-	-	137.427
TOPLAM - Total	51.122	46.473	59.168	48.634	58.456	61.620	50.196	50.263	47.918	-	-	-	473.850

Kamyonet / Pick-up

Firmalar / Firms	1	2	3	4	5	6	7	8	9	10	11	12	Toplam / Total
A.I.O.S.	-	-	-	-	-	-	-	-	-	-	-	-	-
FORD OTOSAN	20.603	23.319	26.833	20.387	20.049	22.480	22.594	14.353	23.173	-	-	-	193.791
KARSAN	-	-	-	-	-	-	-	-	-	-	-	-	-
OTOKAR	-	-	-	-	22	20	-	-	34	-	-	-	76
TOFAŞ	2.564	2.764	2.908	1.068	1.652	648	1.696	552	36	-	-	-	13.888
TOPLAM - Total	23.167	26.083	29.741	21.455	21.723	23.148	24.290	14.905	23.243	-	-	-	207.755

Minibüs / Minibus

Firmalar / Firms	1	2	3	4	5	6	7	8	9	10	11	12	Toplam / Total
FORD OTOSAN	3.212	3.734	4.138	3.268	3.070	3.160	3.451	2.277	2.916	-	-	-	29.226
KARSAN	-	-	6	-	-	14	2	28	59	-	-	-	109
TOPLAM - Total	3.212	3.734	4.144	3.268	3.070	3.174	3.453	2.305	2.975	-	-	-	29.335

Kamyon / Truck

Firmalar / Firms	1	2	3	4	5	6	7	8	9	10	11	12	Toplam / Total
A.I.O.S.	24	18	2	-	19	48	-	-	-	-	-	-	111
FORD OTOSAN	459	619	732	548	611	473	733	576	574	-	-	-	5.325
KARSAN	-	-	-	-	-	-	-	-	-	-	-	-	-
M. BENZ TÜRK	835	1.170	1.025	674	1.223	1.228	1.293	981	1.464	-	-	-	9.893
OTOKAR	1	-	-	1	6	2	6	1	10	-	-	-	27
TEMSA	-	-	17	-	8	10	5	2	9	-	-	-	51
TOPLAM - Total	1.319	1.807	1.776	1.223	1.867	1.761	2.037	1.560	2.057	-	-	-	15.407

Midibüs / Midibus

Firmalar / Firms	1	2	3	4	5	6	7	8	9	10	11	12	Toplam / Total
A.I.O.S.	39	35	54	28	39	88	38	65	58	-	-	-	444
KARSAN	-	24	19	2	5	15	9	1	8	-	-	-	83
OTOKAR	39	12	11	67	53	40	57	56	46	-	-	-	381
TEMSA	4	11	34	25	18	45	39	37	23	-	-	-	236
TOPLAM - Total	82	82	118	122	115	188	143	159	135	-	-	-	1.144

Otobüs / Bus

Firmalar / Firms	1	2	3	4	5	6	7	8	9	10	11	12	Toplam / Total
A.I.O.S.	11	21	42	26	22	22	16	24	30	-	-	-	214
KARSAN	-	2	18	-	5	15	-	1	-	-	-	-	41
M. BENZ TÜRK	285	278	320	252	316	229	344	296	266	-	-	-	2.586
MAN TÜRKİYE	86	133	218	268	266	311	151	166	325	-	-	-	1.924
OTOKAR	83	137	96	90	113	138	158	137	175	-	-	-	1.127
TEMSA	14	13	60	73	66	43	87	133	84	-	-	-	573
TOPLAM - Total	479	584	754	709	788	758	756	757	880	-	-	-	6.465

Traktör / F.Tractor

Firmalar / Firms	1	2	3	4	5	6	7	8	9	10	11	12	Toplam / Total
HATTAT TRAKTÖR	80	44	47	80	50	43	39	116	61	-	-	-	560
TÜRK TRAKTÖR	1.638	1.654	1.766	1.601	1.630	1.562	1.638	1.100	1.313	-	-	-	13.902
TOPLAM - Total	1.718	1.698	1.813	1.681	1.680	1.605	1.677	1.216	1.374	-	-	-	14.462

Firmalar / Firms	2022 Toplam / Total	1	2	3	4	5	6	7	8	9	10	11	12	Toplam / Total
Alfa Romeo	820	138	235	204	131	428	163	297	145	85	-	-	-	1.826
Aston Martin	28	3	-	2	1	5	3	2	1	2	-	-	-	19
Audi	14.554	848	1.662	2.457	2.044	2.006	1.834	2.008	1.675	1.637	-	-	-	16.171
Bentley	15	3	2	5	-	1	5	4	3	4	-	-	-	27
BMW	18.056	580	1.692	2.645	2.123	2.157	1.343	1.965	1.995	1.909	-	-	-	16.409
Chery	-	-	-	629	1.401	3.509	4.218	5.030	6.100	5.636	-	-	-	26.523
Citroen	21.913	1.412	2.198	3.305	2.816	5.607	6.621	3.207	3.168	2.920	-	-	-	31.254
CUPRA	2.792	112	161	1.084	715	451	1.106	1.086	955	796	-	-	-	6.466
Dacia	36.000	5.074	3.312	3.716	3.884	2.837	2.602	6.235	2.666	1.865	-	-	-	32.191
DFSK	352	48	69	109	12	35	8	1	5	-	-	-	-	287
DS	1.829	106	287	324	434	433	553	570	131	235	-	-	-	3.073
Ferrari	22	-	-	5	3	2	2	2	2	1	-	-	-	17
Fiat	276	23	7	220	54	125	180	92	136	232	-	-	-	1.069
Ford	8.421	558	1.510	2.639	2.610	3.121	2.585	1.970	2.263	2.476	-	-	-	19.732
Honda	21.429	1.196	1.355	1.681	1.380	2.228	1.598	1.618	1.659	1.651	-	-	-	14.366
Hyundai	14.198	804	656	906	1.221	610	1.344	990	1.420	636	-	-	-	8.587
Jaguar	90	1	4	16	9	32	6	2	6	5	-	-	-	81
Jeep	2.422	150	160	158	346	325	240	394	224	286	-	-	-	2.283
Kia	18.462	733	1.439	1.737	1.667	1.890	1.996	1.623	1.757	1.518	-	-	-	14.360
Lamborghini	14	-	1	2	2	-	3	2	1	1	-	-	-	12
Land Rover	1.111	185	126	192	154	192	51	172	272	265	-	-	-	1.609
LEAPMOTOR	-	-	-	-	80	50	70	20	30	50	-	-	-	300
Lexus	336	15	5	29	86	57	67	43	15	30	-	-	-	347
Maserati	314	7	14	85	83	86	32	65	37	28	-	-	-	437
Mazda	181	10	16	20	17	20	20	20	20	30	-	-	-	173
Mercedes-Benz	18.661	573	950	1.448	2.860	1.256	2.206	1.438	2.835	2.810	-	-	-	16.376
MG	1.627	420	403	570	641	790	450	1.820	1.175	1.093	-	-	-	7.362
Mini	1.385	61	109	262	71	315	171	219	304	289	-	-	-	1.801
Mitsubishi	583	2	35	30	31	24	23	19	14	13	-	-	-	191
Nissan	9.337	728	750	607	2.762	1.066	884	1.460	968	1.875	-	-	-	11.100
Opel	30.378	1.476	3.519	4.706	5.107	8.798	8.393	6.256	3.986	3.052	-	-	-	45.293
Peugeot	23.345	1.628	5.065	6.874	4.659	6.855	5.645	6.659	3.353	3.674	-	-	-	44.412
Porsche	668	184	98	95	50	96	102	69	129	85	-	-	-	908
Renault	17.713	1.057	1.618	455	851	1.070	3.009	2.269	3.455	1.906	-	-	-	15.690
Seat	6.142	368	395	1.030	992	831	763	918	839	479	-	-	-	6.615
SERES	-	-	-	-	-	-	-	-	-	2	-	-	-	2
Skoda	19.464	2.740	2.971	4.234	2.846	2.759	2.259	2.579	2.086	2.316	-	-	-	24.790
SKYWELL	-	-	90	95	127	50	209	50	50	750	-	-	-	1.421
Ssangyong	804	17	-	-	65	16	31	47	168	137	-	-	-	481
Subaru	622	72	113	125	72	163	134	35	30	44	-	-	-	788
Suzuki	3.601	137	636	170	244	227	496	993	459	368	-	-	-	3.730
TESLA	-	-	-	-	-	-	-	-	-	4.700	-	-	-	4.700
Toyota	5.767	1.003	475	954	485	896	1.370	1.569	1.171	857	-	-	-	8.780
Volkswagen	49.695	3.049	3.235	6.176	6.326	7.512	5.023	10.500	5.186	4.857	-	-	-	51.864
Volvo	8.228	368	732	1.150	964	603	1.340	1.273	751	924	-	-	-	8.105
GENEL TOPLAM - Grand Total	361.655	25.889	36.105	51.151	50.426	59.534	59.158	65.591	51.645	52.529	-	-	-	452.028

Firmalar / Firms	2022 Toplam / Total	1	2	3	4	5	6	7	8	9	10	11	12	Toplam / Total
Citroen	6.918	957	1.360	2.043	1.397	2.921	1.393	1.089	1.482	1.030	-	-	-	13.672
Fiat	2.561	165	487	150	822	401	1.593	1.385	2.224	1.341	-	-	-	8.568
Ford	1.323	111	58	141	32	29	124	238	266	259	-	-	-	1.258
Hyundai	2.935	248	188	513	555	513	435	494	672	592	-	-	-	4.210
Isuzu	1.317	64	91	99	218	246	116	191	110	168	-	-	-	1.303
Iveco	2.966	80	177	94	311	333	289	91	276	263	-	-	-	1.914
Kia	1.905	-	117	188	94	130	152	205	306	246	-	-	-	1.438
Land Rover	419	2	83	19	-	52	93	52	148	141	-	-	-	590
Mercedes-Benz	6.327	598	653	649	963	117	660	486	908	925	-	-	-	5.959
Mitsubishi	1.437	93	69	-	-	-	-	-	-	-	-	-	-	162
Opel	6.347	408	1.202	1.104	1.416	1.873	716	1.072	1.072	669	-	-	-	9.532
Peugeot	9.321	1.157	1.487	1.983	1.650	3.099	790	1.489	1.649	1.159	-	-	-	14.463
Renault	11.433	551	1.557	1.273	1.476	999	944	2.334	2.049	1.958	-	-	-	13.141
Ssangyong	489	114	69	77	122	104	92	80	85	56	-	-	-	799
Toyota	11.661	1.067	776	806	883	932	932	1.107	1.171	1.020	-	-	-	8.694
Volkswagen	10.646	2.027	1.466	1.527	1.002	1.452	923	1.392	1.128	1.232	-	-	-	12.149
GENEL TOPLAM - Grand Total	78.400	7.642	9.840	10.666	10.941	13.201	9.252	11.705	13.546	11.059	-	-	-	97.852