



OTOMOTİV SANAYİİ DERNEĐİ  
AUTOMOTIVE MANUFACTURERS ASSOCIATION

# OTOMOTİV SEKTÖRÜ AYLIK DEĐERLENDİRME RAPORU ARALIK 2023

AUTOMOTIVE INDUSTRY MONTHLY REPORT  
December 2023

OSD "OICA" Üyesidir



OSD is a Member of "OICA"

	12 - 2022	12 - 2023	%	1 - 12 / 2022	1 - 12 / 2023	%	1/2022 - 12/2022	1/2023 - 12/2023	%
Otomobil Üretimi/P.Cars Production	93.521	76.416	-18,3	810.889	952.667	17,5	810.889	952.667	17,5
Toplam Üretim/Total Production	142.314	119.314	-16,2	1.352.648	1.468.393	8,6	1.352.648	1.468.393	8,6
Otomobil Pazarı/P.Cars Market	86.774	126.416	45,7	592.660	967.341	63,2	592.660	967.341	63,2
Toplam Pazar/Total Market	121.962	164.654	35,0	827.163	1.283.952	55,2	827.163	1.283.952	55,2
Otomobil İthalatı/P.Cars Import	48.866	84.644	73,2	361.655	650.489	79,9	361.655	650.489	79,9
Toplam İthalat/Total Import	62.026	105.574	70,2	454.159	815.693	79,6	454.159	815.693	79,6
Otomobil İhracatı/P.Cars Export	61.856	61.549	-0,5	571.218	663.090	16,1	571.218	663.090	16,1
Toplam İhracat/Total Export	93.939	92.148	-1,9	970.124	1.018.247	5,0	970.124	1.018.247	5,0
Otomobil İhracatı(\$)/P.Cars Export (\$)	1.093.497.034,21	1.087.680.053,93	-0,5	9.069.545.936	10.934.400.137	20,6	9.069.545.936	10.934.400.137	20,6
Toplam İhracat(\$)/Total Export (\$)*	3.172.633.017,09	3.210.146.752,35	1,2	31.499.210.573	35.697.561.717	13,3	31.499.210.573	35.697.561.717	13,3

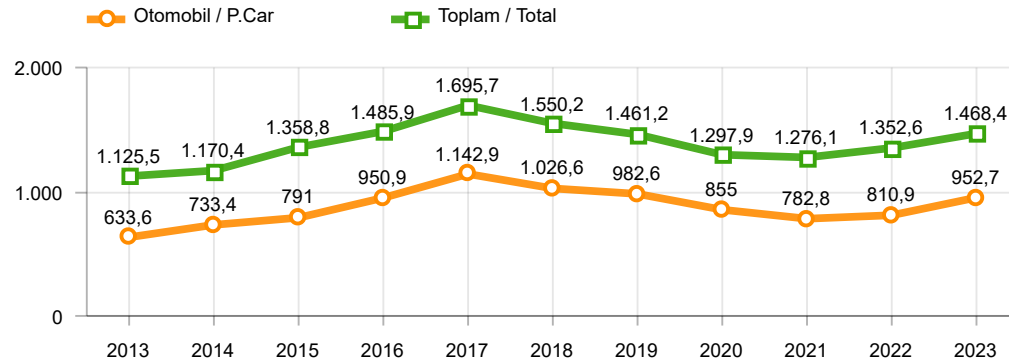
Parametreler/Parameters	12 - 2022	12 - 2023	%	1 - 12 / 2022	1 - 12 / 2023	%	1/2022 - 12/2022	1/2023 - 12/2023	%
ÜFE / PPI	-0,2	1,1	-	97,7	44,2	-	128,5	49,9	-
TÜFE / CPI	1,2	2,9	-	64,3	64,8	-	72,3	53,9	-
Sanayi Endeksi / Industry Index	2,3	2,0	-	78,7	53,7	-	110,0	53,3	-
Dolar \$ ** (1 birim)	18,6	29,0	55,7	16,5	23,7	43,3	16,5	23,7	43,3
Euro € ** (1 birim)	19,7	31,6	60,7	17,3	25,6	47,7	17,3	25,6	47,7
Japon Yeni ¥ ** (100 birim)	13,7	20,0	45,8	12,5	16,7	33,6	12,5	16,7	33,6

\*Toplam Sanayi / Total Industry Including Components

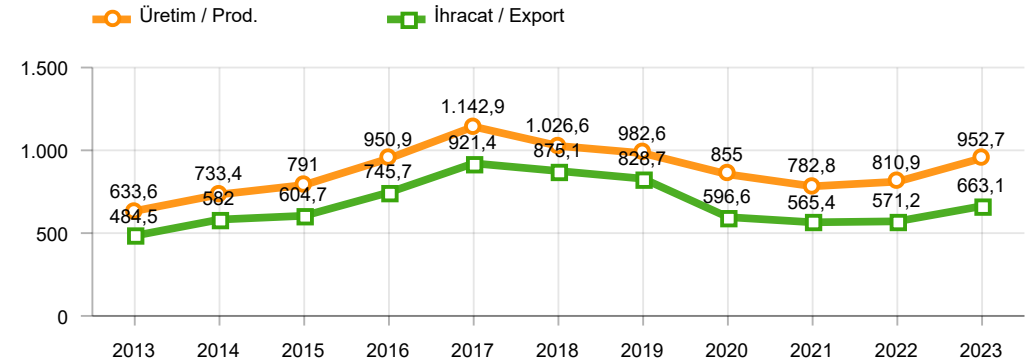
\*\* Ortalama Değerler / Average Values

Araç Tipleri / Types	12 / 2022	12 / 2023	12 % Değişim	1-12 / 2022	1-12 / 2023	1-12 % Değişim
OTOMOBİL / Pass.Car	93.521	76.416	-18,3	810.889	952.667	17,5
<b>OTOMOBİL Toplam / Pass.Car Total</b>	<b>93.521</b>	<b>76.416</b>	<b>-18,3</b>	<b>810.889</b>	<b>952.667</b>	<b>17,5</b>
B.KAMYON / H. Truck	4.162	3.175	-23,7	41.544	46.812	12,7
K.KAMYON / L. Truck	402	499	24,1	5.026	5.432	8,1
KAMYONET / Pick Up	38.920	34.093	-12,4	436.611	397.015	-9,1
OTOBÜS / Bus	1.215	1.198	-1,4	8.346	10.862	30,1
MİNİBÜS / Minibus	3.652	3.644	-0,2	46.897	50.941	8,6
MİDİBÜS / Midibus	442	289	-34,6	3.335	4.664	39,9
<b>TİCARİ ARAÇLAR Toplam / Commercial Vehicles Total</b>	<b>48.793</b>	<b>42.898</b>	<b>-12,1</b>	<b>541.759</b>	<b>515.726</b>	<b>-4,8</b>
<b>TAŞIT ARAÇLARI Toplam / Motor Vehicles Total</b>	<b>142.314</b>	<b>119.314</b>	<b>-16,2</b>	<b>1.352.648</b>	<b>1.468.393</b>	<b>8,6</b>
TRAKTÖR / F.Tractor	4.602	4.345	-5,6	49.541	57.570	16,2
<b>TRAKTÖR Toplam / F.Tractor Total</b>	<b>4.602</b>	<b>4.345</b>	<b>-5,6</b>	<b>49.541</b>	<b>57.570</b>	<b>16,2</b>
<b>GENEL TOPLAM / Grand Total</b>	<b>146.916</b>	<b>123.659</b>	<b>-15,8</b>	<b>1.402.189</b>	<b>1.525.963</b>	<b>8,8</b>

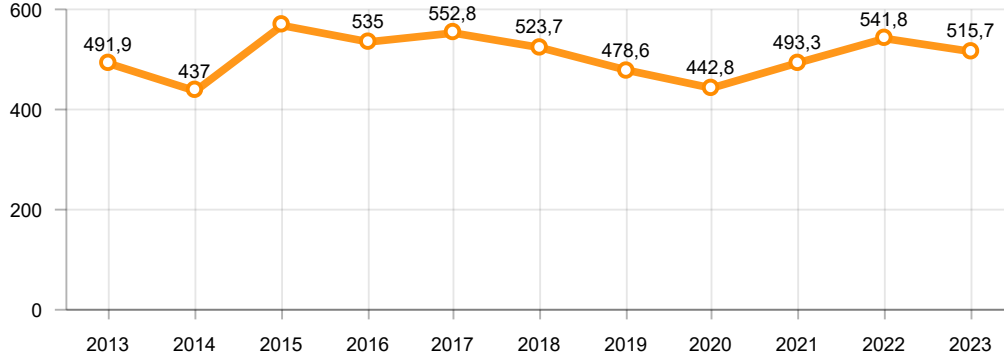
**Toplam Üretim ve Otomobil Üretimi (x1000)(OCAK - ARALIK)**  
Total & P.Cars Production (x1000)(January - December)



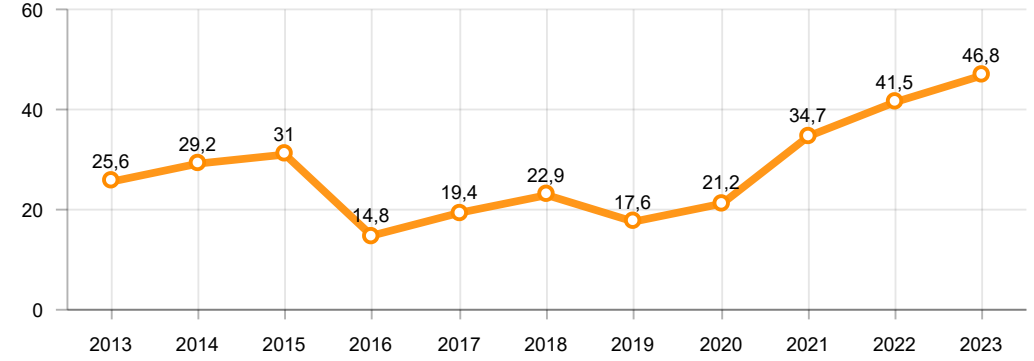
**Otomobil Üretimi ve İhracat (x1000)(OCAK - ARALIK)**  
P.Cars Production & Exports (x1000)(January - December)



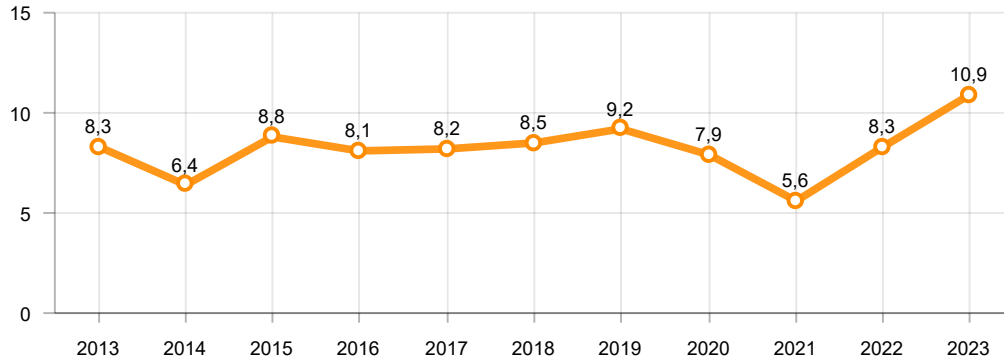
**Ticari Araç Üretimi (x1000)(OCAK - ARALIK)**  
Commercial Vehicle Production (x1000)(January - December)



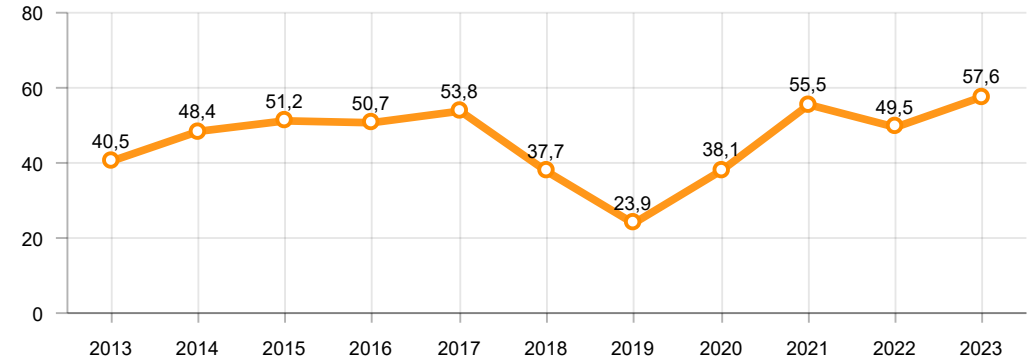
**Büyük Kamyon Üretimi (x1000)(OCAK - ARALIK)**  
Heavy Truck Production (x1000)(January - December)

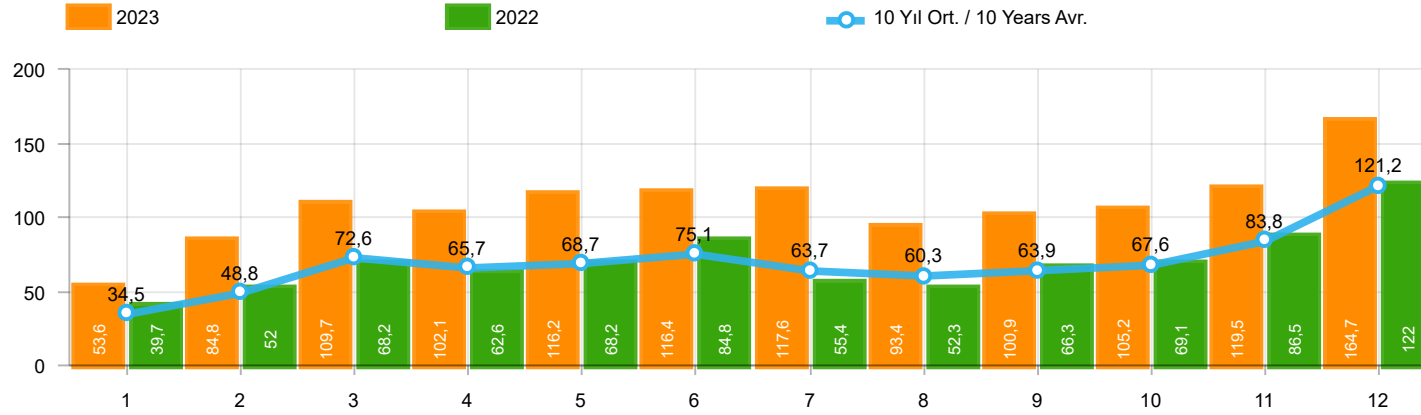


**Otobüs Üretimi (x1000)(OCAK - ARALIK)**  
Bus Production (x1000)(January - December)



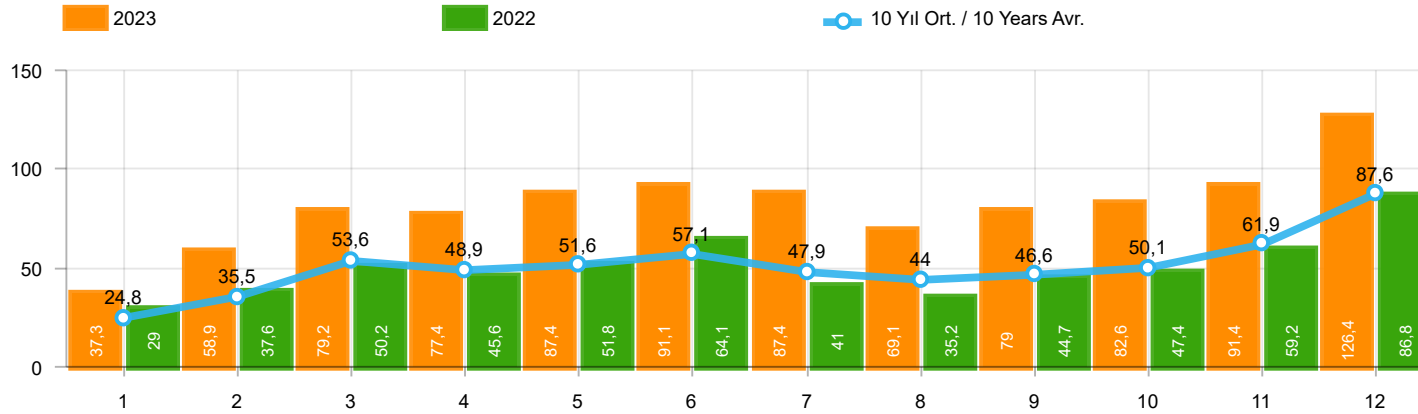
**Traktör Üretimi (x1000)(OCAK - ARALIK)**  
F. Tractor Production (x1000)(January - December)





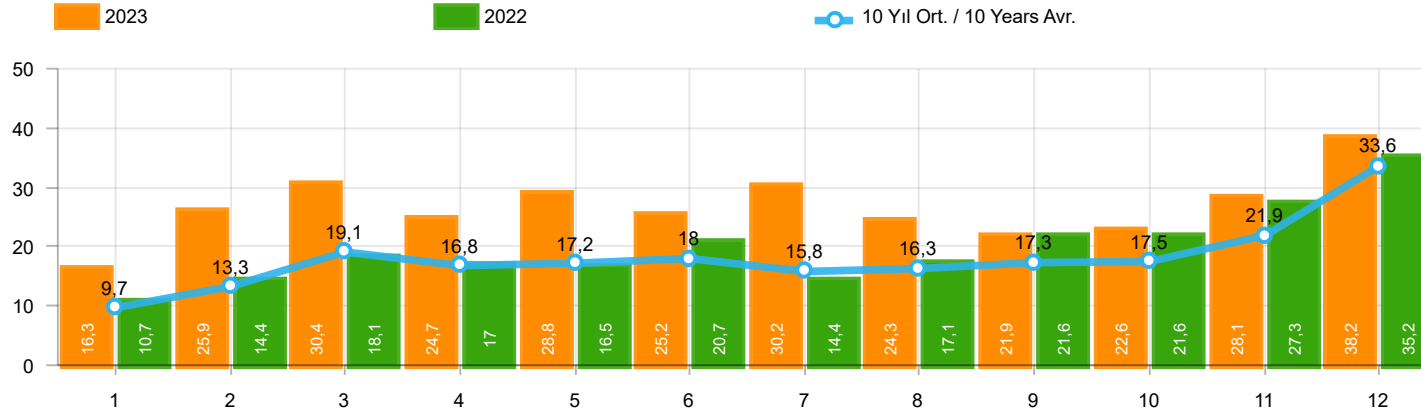
Aylar / Months	10 Yıl Ort / 10 Years Avr.	2023	%
1	34.512	53.578	55,2
2	48.807	84.781	73,7
3	72.622	109.658	51,0
4	65.666	102.076	55,4
5	68.722	116.227	69,1
6	75.146	116.352	54,8
7	63.695	117.647	84,7
8	60.309	93.409	54,9
9	63.920	100.862	57,8
10	67.649	105.181	55,5
11	83.789	119.527	42,7
12	121.198	164.654	35,9
TOPLAM/TOTAL	826.038	1.283.952	55,4

Yıl / Year	1	2	3	4	5	6	7	8	9	10	11	12	1-12 Toplam / Total	Toplam / Total	1-12 Yerli / Local	1-12 İthal / Import	İthal Oran / Import %
2013	37.563	51.133	72.943	77.265	85.835	78.043	75.152	67.662	71.388	60.690	83.470	136.048	897.192	897.192	279.461	617.731	68,9
2014	34.751	37.659	51.312	57.113	62.447	64.295	62.770	63.303	70.764	69.742	84.368	154.843	813.367	813.367	289.849	523.518	64,4
2015	37.256	59.221	89.765	96.182	85.804	91.071	87.358	85.244	67.181	67.086	88.431	164.464	1.019.063	1.019.063	359.233	659.830	64,7
2016	34.369	54.840	85.932	87.748	97.090	94.666	59.732	73.654	69.413	85.666	125.462	145.706	1.014.278	1.014.278	333.010	681.268	67,2
2017	36.640	48.585	76.178	78.231	88.066	85.820	84.727	74.818	74.046	94.439	103.772	141.507	986.829	986.829	362.342	624.487	63,3
2018	36.525	48.768	79.600	73.886	74.996	52.788	54.194	35.137	23.915	22.321	59.406	80.014	641.550	641.550	244.282	397.268	61,9
2019	14.847	25.569	50.651	31.944	33.947	43.899	18.442	26.832	43.068	50.288	59.575	92.885	491.947	491.947	214.878	277.069	56,3
2020	28.123	48.948	51.554	27.165	33.308	72.789	89.419	63.570	93.406	97.125	82.824	107.919	796.150	796.150	369.159	426.991	53,6
2021	45.308	61.325	100.046	64.551	57.510	83.304	49.732	60.573	59.717	60.064	64.087	66.633	772.850	772.850	347.117	425.733	55,1
2022	39.741	52.030	68.241	62.584	68.221	84.788	55.424	52.297	66.304	69.072	86.499	121.962	827.163	827.163	373.004	454.159	54,9
2023	53.578	84.781	109.658	102.076	116.227	116.352	117.647	93.409	100.862	105.181	119.527	164.654	1.283.952	1.283.952	468.259	815.693	63,5



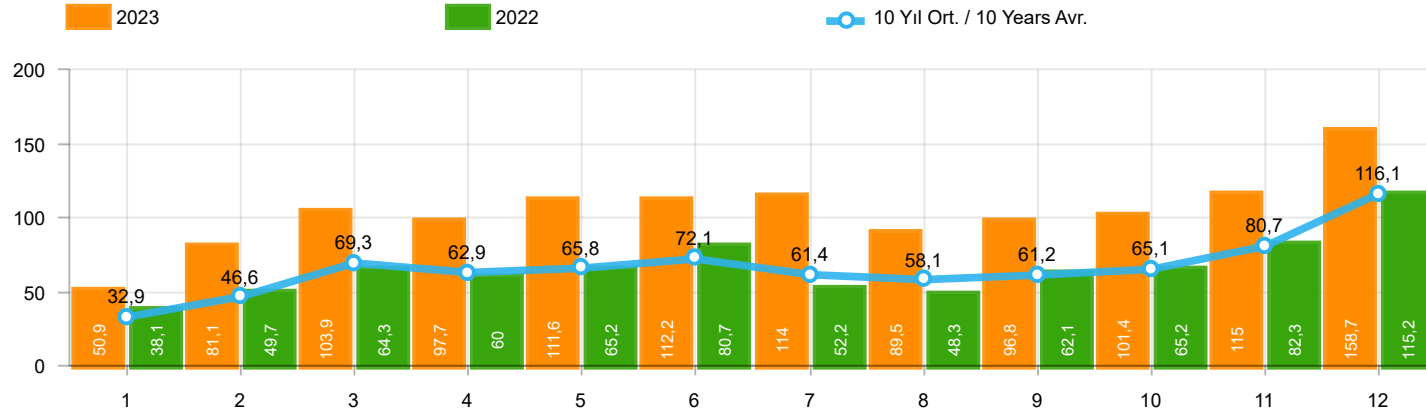
Aylar / Months	10 Yıl Ort / 10 Years Avr.	2023	%
1	24.773	37.288	50,5
2	35.527	58.907	65,8
3	53.571	79.226	47,9
4	48.888	77.398	58,3
5	51.559	87.418	69,6
6	57.141	91.135	59,5
7	47.867	87.416	82,6
8	44.024	69.131	57,0
9	46.633	78.971	69,3
10	50.109	82.611	64,9
11	61.852	91.424	47,8
12	87.606	126.416	44,3
TOPLAM / TOTAL	609.548	967.341	58,7

Yıl / Year	1	2	3	4	5	6	7	8	9	10	11	12	1-12 Toplam / Total	Toplam / Total	1-12 Yerli / Local	1-12 İthal / Import	İthal Oran / Import %
2013	25.835	36.814	51.785	56.999	62.383	58.290	55.712	51.611	52.925	46.985	64.117	101.199	664.655	664.655	147.128	517.527	77,9
2014	24.368	27.167	37.812	42.769	46.379	47.278	46.602	45.131	49.262	50.814	59.695	110.054	587.331	587.331	157.349	429.982	73,2
2015	24.498	40.817	61.676	70.211	62.878	67.766	64.218	61.753	47.088	47.954	62.397	114.340	725.596	725.596	186.526	539.070	74,3
2016	23.358	40.588	63.975	65.618	73.832	71.111	45.566	53.977	51.340	63.746	95.783	108.044	756.938	756.938	191.893	565.045	74,6
2017	25.689	34.658	55.616	57.998	65.799	66.164	62.384	54.890	53.423	70.488	75.956	99.694	722.759	722.759	216.791	505.968	70,0
2018	26.611	35.901	59.798	55.108	57.227	41.225	42.024	26.976	17.595	16.809	46.204	60.843	486.321	486.321	163.405	322.916	66,4
2019	10.979	19.205	38.628	24.416	27.126	36.024	15.398	21.544	35.308	39.996	47.803	70.829	387.256	387.256	157.178	230.078	59,4
2020	22.016	37.727	39.887	21.825	25.073	57.067	69.427	44.372	71.296	76.341	64.357	80.721	610.109	610.109	249.659	360.450	59,1
2021	35.358	44.749	76.357	48.375	43.138	62.348	36.311	44.756	43.408	40.512	42.982	43.559	561.853	561.853	225.957	335.896	59,8
2022	29.020	37.641	50.173	45.564	51.750	64.134	41.031	35.230	44.681	47.440	59.222	86.774	592.660	592.660	231.005	361.655	61,0
2023	37.288	58.907	79.226	77.398	87.418	91.135	87.416	69.131	78.971	82.611	91.424	126.416	967.341	967.341	311.352	655.989	67,8



Aylar / Months	10 Yıl Ort. / 10 Years Avr.	2023	%
1	9.739	16.290	67,3
2	13.281	25.874	94,8
3	19.052	30.432	59,7
4	16.779	24.678	47,1
5	17.164	28.809	67,8
6	18.006	25.217	40,1
7	15.828	30.231	91,0
8	16.285	24.278	49,1
9	17.288	21.891	26,6
10	17.541	22.570	28,7
11	21.938	28.103	28,1
12	33.592	38.238	13,8
TOPLAM / TOTAL	216.491	316.611	46,3

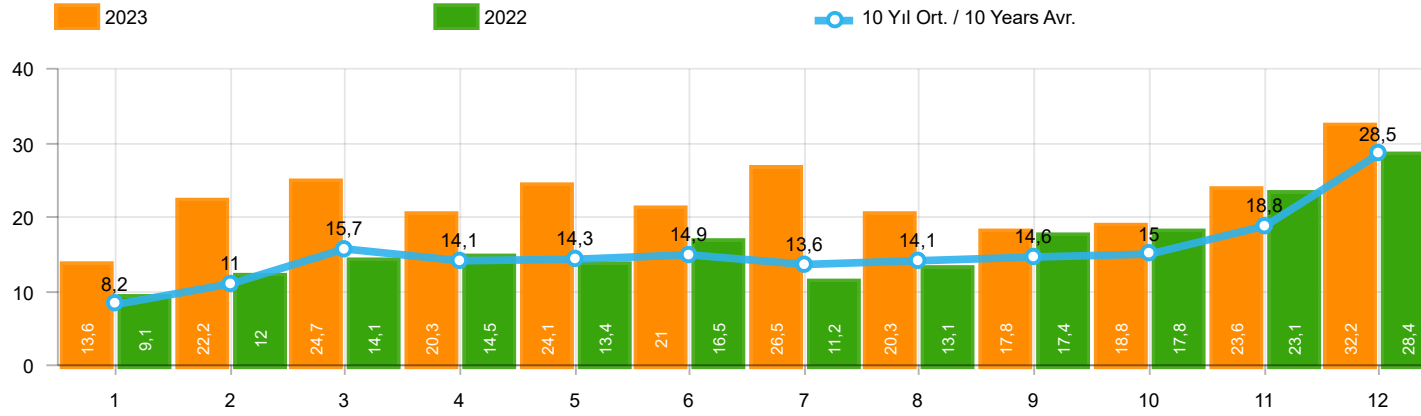
Yıl / Year	1	2	3	4	5	6	7	8	9	10	11	12	1-12 Toplam / Total	Toplam / Total	1-12 Yerli / Local	1-12 İthal / Import	İthal Oran / Import %
2013	11.728	14.319	21.158	20.266	23.452	19.753	19.440	16.051	18.463	13.705	19.353	34.849	232.537	232.537	132.333	100.204	43,1
2014	10.383	10.492	13.500	14.344	16.068	17.017	16.168	18.172	21.502	18.928	24.673	44.789	226.036	226.036	132.500	93.536	41,4
2015	12.758	18.404	28.089	25.971	22.926	23.305	23.140	23.491	20.093	19.132	26.034	50.124	293.467	293.467	172.707	120.760	41,1
2016	11.011	14.252	21.957	22.130	23.258	23.555	14.166	19.677	18.073	21.920	29.679	37.662	257.340	257.340	141.117	116.223	45,2
2017	10.951	13.927	20.562	20.233	22.267	19.656	22.343	19.928	20.623	23.951	27.816	41.813	264.070	264.070	145.551	118.519	44,9
2018	9.914	12.867	19.802	18.778	17.769	11.563	12.170	8.161	6.320	5.512	13.202	19.171	155.229	155.229	80.877	74.352	47,9
2019	3.868	6.364	12.023	7.528	6.821	7.875	3.044	5.288	7.760	10.292	11.772	22.056	104.691	104.691	57.700	46.991	44,9
2020	6.107	11.221	11.667	5.340	8.235	15.722	19.992	19.198	22.110	20.784	18.467	27.198	186.041	186.041	119.500	66.541	35,8
2021	9.950	16.576	23.689	16.176	14.372	20.956	13.421	15.817	16.309	19.552	21.105	23.074	210.997	210.997	121.160	89.837	42,6
2022	10.721	14.389	18.068	17.020	16.471	20.654	14.393	17.067	21.623	21.632	27.277	35.188	234.503	234.503	141.999	92.504	39,4
2023	16.290	25.874	30.432	24.678	28.809	25.217	30.231	24.278	21.891	22.570	28.103	38.238	316.611	316.611	156.907	159.704	50,4



Aylar / Months	10 Yıl Ort / 10 Years Avr.	2023	%
1	32.943	50.894	54,5
2	46.561	81.148	74,3
3	69.268	103.929	50,0
4	62.943	97.679	55,2
5	65.836	111.556	69,4
6	72.078	112.163	55,6
7	61.429	113.959	85,5
8	58.083	89.454	54,0
9	61.233	96.793	58,1
10	65.094	101.367	55,7
11	80.674	115.040	42,6
12	116.099	158.653	36,7
TOPLAM / TOTAL	792.241	1.232.635	55,6

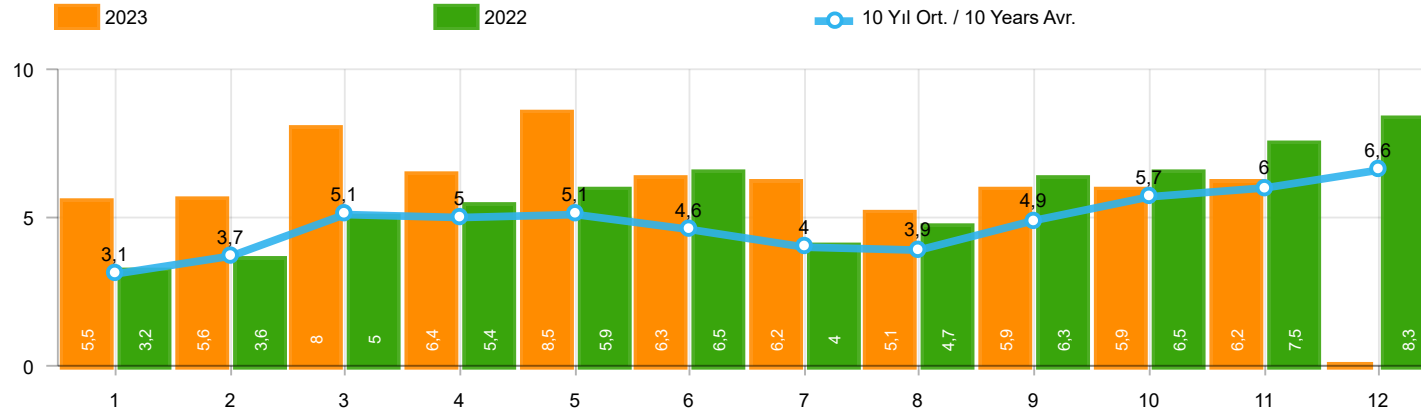
Yıl / Year	1	2	3	4	5	6	7	8	9	10	11	12	1-12 Toplam / Total	Toplam / Total	1-12 Yerli / Local	1-12 İthal / Import	İthal Oran / Import %
2013	35.523	48.307	68.774	73.575	81.468	74.096	71.596	65.043	67.963	58.014	79.301	129.718	853.378	853.378	245.906	607.472	71,2
2014	32.670	35.021	47.581	53.305	58.121	60.163	59.907	60.199	66.531	66.573	80.621	146.989	767.681	767.681	255.573	512.108	66,7
2015	34.615	55.331	83.302	91.602	81.542	86.158	83.836	82.577	64.025	64.255	84.601	156.173	968.017	968.017	321.725	646.292	66,8
2016	32.713	52.825	82.948	84.887	93.904	91.540	58.533	71.556	67.593	83.000	122.309	141.912	983.720	983.720	310.864	672.856	68,4
2017	35.323	46.965	73.802	75.988	85.422	83.658	82.297	72.536	71.352	91.752	100.859	136.240	956.194	956.194	340.306	615.888	64,4
2018	35.076	47.009	76.345	71.126	72.755	51.037	52.734	34.346	23.028	21.571	58.204	77.706	620.937	620.937	230.493	390.444	62,9
2019	14.373	24.875	49.221	30.971	33.016	42.688	17.927	26.246	41.992	49.075	58.176	90.500	479.060	479.060	206.069	272.991	57,0
2020	27.273	47.122	50.008	26.457	32.235	70.973	87.401	61.533	90.619	94.733	80.141	104.293	772.788	772.788	353.336	419.452	54,3
2021	43.728	58.504	96.428	61.488	54.734	79.819	47.849	58.454	57.141	56.746	60.216	62.243	737.350	737.350	323.627	413.723	56,1
2022	38.131	49.652	64.267	60.035	65.167	80.652	52.206	48.336	62.084	65.222	82.311	115.220	783.283	783.283	343.228	440.055	56,2
2023	50.894	81.148	103.929	97.679	111.556	112.163	113.959	89.454	96.793	101.367	115.040	158.653	1.232.635	1.232.635	433.897	798.738	64,8





Aylar / Months	10 Yıl Ort / 10 Years Avr.	2023	%
1	8.169	13.606	66,6
2	11.034	22.241	101,6
3	15.697	24.703	57,4
4	14.055	20.281	44,3
5	14.278	24.138	69,1
6	14.938	21.028	40,8
7	13.561	26.543	95,7
8	14.059	20.323	44,6
9	14.600	17.822	22,1
10	14.986	18.756	25,2
11	18.822	23.616	25,5
12	28.494	32.237	13,1
TOPLAM / TOTAL	182.693	265.294	45,2

Yıl / Year	1	2	3	4	5	6	7	8	9	10	11	12	1-12 Toplam / Total	Toplam / Total	1-12 Yerli / Local	1-12 İthal / Import	İthal Oran / Import %
2013	9.688	11.493	16.989	16.576	19.085	15.806	15.884	13.432	15.038	11.029	15.184	28.519	188.723	188.723	98.778	89.945	47,7
2014	8.302	7.854	9.769	10.536	11.742	12.885	13.305	15.068	17.269	15.759	20.926	36.935	180.350	180.350	98.224	82.126	45,5
2015	10.117	14.514	21.626	21.391	18.664	18.392	19.618	20.824	16.937	16.301	22.204	41.833	242.421	242.421	135.199	107.222	44,2
2016	9.355	12.237	18.973	19.269	20.072	20.429	12.967	17.579	16.253	19.254	26.526	33.868	226.782	226.782	118.971	107.811	47,5
2017	9.634	12.307	18.186	17.990	19.623	17.494	19.913	17.646	17.929	21.264	24.903	36.546	233.435	233.435	123.515	109.920	47,1
2018	8.465	11.108	16.547	16.018	15.528	9.812	10.710	7.370	5.433	4.762	12.000	16.863	134.616	134.616	67.088	67.528	50,2
2019	3.394	5.670	10.593	6.555	5.890	6.664	2.529	4.702	6.684	9.079	10.373	19.671	91.804	91.804	48.891	42.913	46,7
2020	5.257	9.395	10.121	4.632	7.162	13.906	17.974	17.161	19.323	18.392	15.784	23.572	162.679	162.679	103.677	59.002	36,3
2021	8.370	13.755	20.071	13.113	11.596	17.471	11.538	13.698	13.733	16.234	17.234	18.684	175.497	175.497	97.670	77.827	44,3
2022	9.111	12.011	14.094	14.471	13.417	16.518	11.175	13.106	17.403	17.782	23.089	28.446	190.623	190.623	112.223	78.400	41,1
2023	13.606	22.241	24.703	20.281	24.138	21.028	26.543	20.323	17.822	18.756	23.616	32.237	265.294	265.294	122.545	142.749	53,8



Aylar / Months	10 Yıl Ort / 10 Years Avr.	2023	%
1	3.083	5.533	79,5
2	3.701	5.569	50,5
3	5.145	7.959	54,7
4	5.014	6.433	28,3
5	5.055	8.511	68,4
6	4.576	6.269	37,0
7	3.957	6.221	57,2
8	3.888	5.072	30,5
9	4.945	5.943	20,2
10	5.655	5.897	4,3
11	6.034	6.219	3,1
<b>TOPLAM / TOTAL</b>	<b>51.051</b>	<b>69.626</b>	<b>36,4</b>

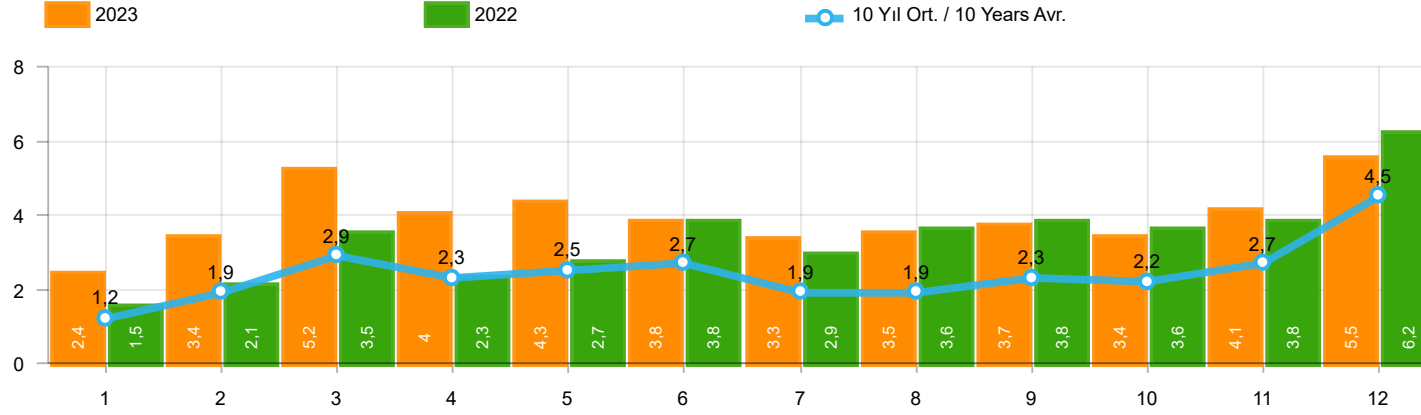
Yıl / Year	1	2	3	4	5	6	7	8	9	10	11	12	1-11 Toplam / Total	Toplam / Total
2013	2.161	2.432	4.005	4.585	5.616	3.136	4.574	3.408	4.935	4.762	5.781	6.891	45.395	52.286
2014	2.169	3.512	4.476	4.905	5.094	5.028	4.233	4.920	5.619	5.743	6.250	7.409	51.949	59.358
2015	3.124	3.984	5.460	6.383	6.078	5.748	4.677	5.044	4.765	7.049	6.898	7.564	59.210	66.774
2016	3.739	4.731	7.067	6.546	6.575	5.543	3.833	5.134	4.945	7.372	7.090	7.603	62.575	70.178
2017	3.974	4.964	6.773	6.780	7.057	5.356	5.003	4.396	6.064	7.734	7.457	7.351	65.558	72.909
2018	4.362	4.179	5.925	5.216	4.584	3.146	3.654	2.587	3.541	3.698	3.578	3.886	44.470	48.356
2019	1.311	1.401	2.143	2.126	2.229	1.538	2.039	1.579	2.284	2.828	3.037	3.782	22.515	26.297
2020	2.425	2.778	3.771	2.606	3.244	4.173	3.727	3.974	4.928	5.466	5.831	6.221	42.923	49.144
2021	4.411	5.395	6.845	5.581	4.200	5.571	3.846	3.093	6.100	5.351	6.901	6.776	57.294	64.070
2022	3.152	3.636	4.988	5.408	5.873	6.520	3.985	4.740	6.265	6.542	7.514	8.319	58.623	66.942
2023	5.533	5.569	7.959	6.433	8.511	6.269	6.221	5.072	5.943	5.897	6.219	-	69.626	69.626

Kaynak: TÜİK trafik kayıtları.

Rakamlar, son iki model yılına ait traktör tescillerinden oluşmaktadır.

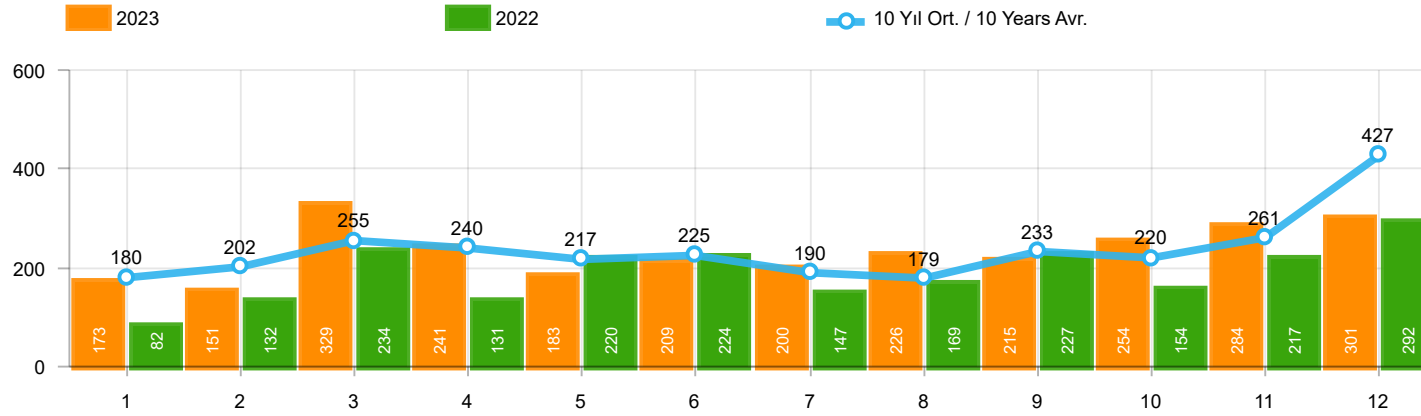
Source: Turkish Statistical Institute – Traffic registrations

Data represents the last two model year's farm tractors registration figures



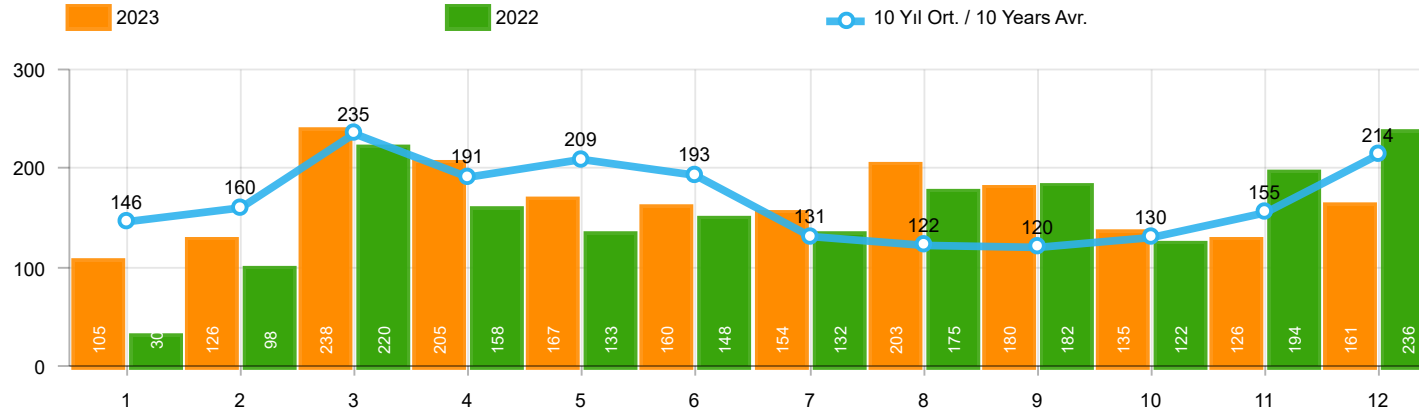
Aylar / Months	10 Yıl Ort / 10 Years Avr.	2023	%
1	1.244	2.406	93,3
2	1.885	3.356	78,0
3	2.865	5.162	80,2
4	2.293	3.951	72,3
5	2.460	4.321	75,6
6	2.650	3.820	44,1
7	1.945	3.334	71,4
8	1.925	3.526	83,2
9	2.335	3.674	57,4
10	2.205	3.425	55,3
11	2.700	4.077	51,0
12	4.458	5.539	24,2
TOPLAM / TOTAL	28.966	46.591	60,9

Yıl / Year	1	2	3	4	5	6	7	8	9	10	11	12	1-12 Toplam / Total	Toplam / Total	1-12 Yerli / Local	1-12 İthal / Import	İthal Oran / Import %
2013	1.484	2.113	3.343	2.925	3.504	3.186	2.777	2.103	2.875	2.086	3.631	5.444	35.471	35.471	25.259	10.212	28,8
2014	1.522	2.065	3.094	3.224	3.727	3.726	2.578	2.783	3.708	2.858	3.384	6.869	39.538	39.538	28.289	11.249	28,5
2015	2.215	3.346	5.699	3.729	3.600	4.253	2.922	2.211	2.687	2.266	3.146	7.307	43.381	43.381	29.913	13.468	31,0
2016	1.167	1.648	2.515	2.319	2.711	2.623	984	1.796	1.438	2.238	2.485	3.127	25.051	25.051	16.671	8.380	33,5
2017	931	1.290	1.982	1.888	2.184	1.891	1.974	1.860	2.284	2.188	2.487	4.438	25.397	25.397	16.812	8.585	33,8
2018	1.237	1.552	2.630	2.328	1.909	1.272	1.235	603	653	488	905	1.695	16.507	16.507	9.694	6.813	41,3
2019	342	579	1.255	842	728	981	435	497	854	1.047	1.100	2.087	10.747	10.747	6.669	4.078	37,9
2020	682	1.475	1.290	628	921	1.570	1.809	1.835	2.660	2.239	2.537	3.358	21.004	21.004	13.465	7.539	35,9
2021	1.366	2.633	3.319	2.788	2.617	3.238	1.799	1.942	2.377	3.067	3.549	4.045	32.740	32.740	20.730	12.010	36,7
2022	1.498	2.148	3.520	2.260	2.701	3.764	2.939	3.617	3.811	3.574	3.777	6.214	39.823	39.823	25.719	14.104	35,4
2023	2.406	3.356	5.162	3.951	4.321	3.820	3.334	3.526	3.674	3.425	4.077	5.539	46.591	46.591	29.636	16.955	36,4



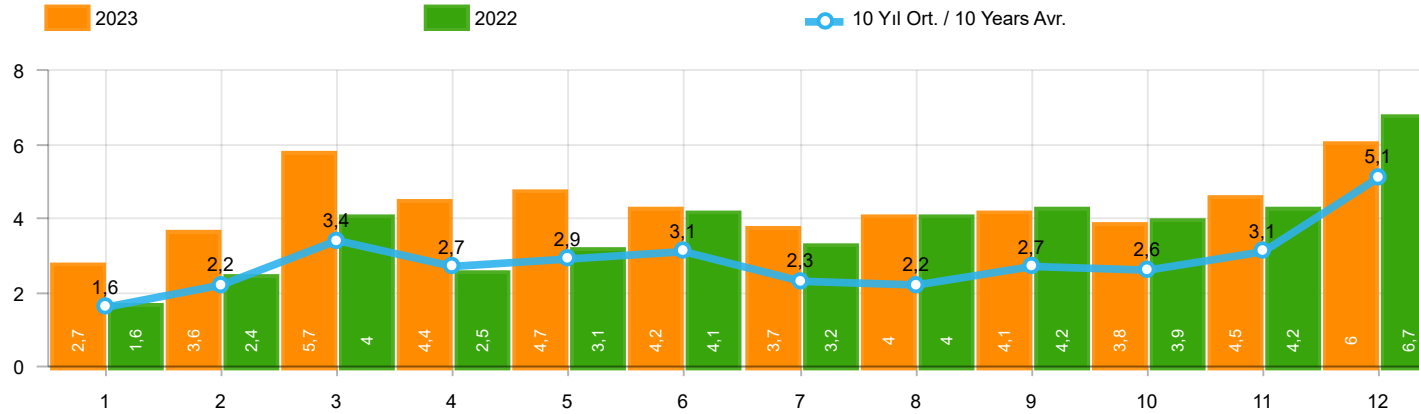
Aylar / Months	10 Yıl Ort / 10 Years Avr.	2023	%
1	180	173	-3,8
2	202	151	-25,1
3	255	329	28,8
4	240	241	0,6
5	217	183	-15,7
6	225	209	-7,1
7	190	200	5,4
8	179	226	26,0
9	233	215	-7,7
10	220	254	15,5
11	261	284	9,0
12	427	301	-29,4
TOPLAM / TOTAL	2.828	2.766	-2,2

Yıl / Year	1	2	3	4	5	6	7	8	9	10	11	12	1-12 Toplam / Total	Toplam / Total
2013	191	268	289	276	283	241	367	235	305	392	415	697	3.959	3.959
2014	360	394	384	333	294	258	216	229	395	220	266	653	4.002	4.002
2015	280	322	451	561	372	405	389	253	316	394	325	621	4.689	4.689
2016	309	158	251	302	261	196	139	220	241	230	354	431	3.092	3.092
2017	212	211	227	231	272	156	250	235	318	268	317	594	3.291	3.291
2018	134	142	410	296	207	315	180	146	160	155	184	425	2.754	2.754
2019	57	61	63	96	106	189	55	44	138	138	257	244	1.448	1.448
2020	104	221	128	35	97	134	111	123	77	71	82	137	1.320	1.320
2021	70	108	117	135	58	131	44	139	153	178	188	172	1.493	1.493
2022	82	132	234	131	220	224	147	169	227	154	217	292	2.229	2.229
2023	173	151	329	241	183	209	200	226	215	254	284	301	2.766	2.766



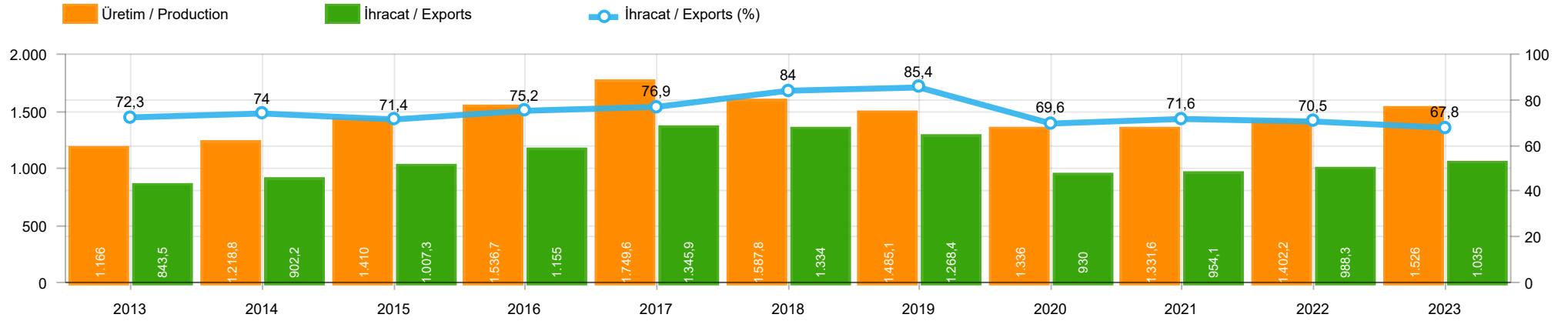
Aylar / Months	10 Yıl Ort / 10 Years Avr.	2023	%
1	146	105	-27,8
2	160	126	-21,3
3	235	238	1,5
4	191	205	7,4
5	209	167	-20,0
6	193	160	-16,9
7	131	154	17,2
8	122	203	65,8
9	120	180	50,4
10	130	135	3,8
11	155	126	-18,7
12	214	161	-24,7
TOPLAM / TOTAL	2.005	1.960	-2,2

Yıl / Year	1	2	3	4	5	6	7	8	9	10	11	12	1-12 Toplam / Total	Toplam / Total	1-12 Yerli / Local	1-12 İthal / Import	İthal Oran / Import %
2013	365	445	537	489	580	520	412	281	245	198	123	189	4.384	4.384	4.337	47	1,1
2014	199	179	253	251	305	148	69	92	130	91	97	332	2.146	2.146	1.985	161	7,5
2015	146	222	313	290	290	255	211	203	153	171	359	363	2.976	2.976	2.906	70	2,4
2016	180	209	218	240	214	307	76	82	141	198	314	236	2.415	2.415	2.383	32	1,3
2017	174	119	167	124	188	115	206	187	92	231	109	235	1.947	1.947	1.933	14	0,7
2018	78	65	215	136	125	164	45	42	74	107	113	188	1.352	1.352	1.341	11	0,8
2019	75	54	112	35	97	41	25	45	84	28	42	54	692	692	692	-	-
2020	64	130	128	45	55	112	98	79	50	82	64	131	1.038	1.038	1.038	-	-
2021	144	80	182	140	101	116	40	38	46	73	134	173	1.267	1.267	1.267	-	-
2022	30	98	220	158	133	148	132	175	182	122	194	236	1.828	1.828	1.828	-	-
2023	105	126	238	205	167	160	154	203	180	135	126	161	1.960	1.960	1.960	-	-



Aylar / Months	10 Yıl Ort / 10 Years Avr.	2023	%
1	1.570	2.684	71,0
2	2.247	3.633	61,7
3	3.355	5.729	70,8
4	2.724	4.397	61,4
5	2.886	4.671	61,9
6	3.068	4.189	36,5
7	2.266	3.688	62,7
8	2.226	3.955	77,6
9	2.687	4.069	51,4
10	2.555	3.814	49,3
11	3.116	4.487	44,0
12	5.099	6.001	17,7
TOPLAM / TOTAL	33.798	51.317	51,8

Yıl / Year	1	2	3	4	5	6	7	8	9	10	11	12	1-12 Toplam / Total	Toplam / Total	1-12 Yerli / Local	1-12 İthal / Import	İthal Oran / Import %
2013	2.040	2.826	4.169	3.690	4.367	3.947	3.556	2.619	3.425	2.676	4.169	6.330	43.814	43.814	33.555	10.259	23,4
2014	2.081	2.638	3.731	3.808	4.326	4.132	2.863	3.104	4.233	3.169	3.747	7.854	45.686	45.686	34.276	11.410	25,0
2015	2.641	3.890	6.463	4.580	4.262	4.913	3.522	2.667	3.156	2.831	3.830	8.291	51.046	51.046	37.508	13.538	26,5
2016	1.656	2.015	2.984	2.861	3.186	3.126	1.199	2.098	1.820	2.666	3.153	3.794	30.558	30.558	22.146	8.412	27,5
2017	1.317	1.620	2.376	2.243	2.644	2.162	2.430	2.282	2.694	2.687	2.913	5.267	30.635	30.635	22.036	8.599	28,1
2018	1.449	1.759	3.255	2.760	2.241	1.751	1.460	791	887	750	1.202	2.308	20.613	20.613	13.789	6.824	33,1
2019	474	694	1.430	973	931	1.211	515	586	1.076	1.213	1.399	2.385	12.887	12.887	8.809	4.078	31,6
2020	850	1.826	1.546	708	1.073	1.816	2.018	2.037	2.787	2.392	2.683	3.626	23.362	23.362	15.823	7.539	32,3
2021	1.580	2.821	3.618	3.063	2.776	3.485	1.883	2.119	2.576	3.318	3.871	4.390	35.500	35.500	23.490	12.010	33,8
2022	1.610	2.378	3.974	2.549	3.054	4.136	3.218	3.961	4.220	3.850	4.188	6.742	43.880	43.880	29.776	14.104	32,1
2023	2.684	3.633	5.729	4.397	4.671	4.189	3.688	3.955	4.069	3.814	4.487	6.001	51.317	51.317	34.362	16.955	33,0



	2013	2014	2015	2016	2017	2018	2019	2020	2021	2022	2023
<b>İhracat/Export</b>	843.467	902.194	1.007.267	1.155.033	1.345.917	1.333.992	1.268.430	930.033	954.053	988.278	1.034.999
<b>Üretim/Production</b>	1.166.043	1.218.848	1.410.034	1.536.673	1.749.572	1.587.946	1.485.143	1.335.981	1.331.643	1.402.189	1.525.963
<b>İhracat/Exports (%)</b>	72,3	74	71,4	75,2	76,9	84	85,4	69,6	71,6	70,5	67,8

**Taşıt Araçları İhracatı (2021 - 2023)**  
Motor Vehicle Exports (2021 - 2023)

SEKTÖR / SECTOR	2021	2022	1/12-2022	1/12-2023	2023/2022 %
OTOMOBİL / Pass.Car	565.370	571.218	571.218	663.090	16,1
<b>OTOMOBİL TOPLAM / Pass. Car Total</b>	<b>565.370</b>	<b>571.218</b>	<b>571.218</b>	<b>663.090</b>	<b>16,1</b>
KAMYON / Truck	17.293	20.123	20.123	21.566	7,2
KAMYONET / Pick Up	310.874	335.148	335.148	291.052	-13,2
OTOBÜS / Bus	4.750	6.579	6.579	9.447	43,6
MİNİBÜS / Minibus	37.741	36.016	36.016	31.421	-12,8
MİDİBÜS / Midibus	987	1.040	1.040	1.671	60,7
<b>TİCARİ ARAÇLAR TOPLAM / Commercial Vehicle Total</b>	<b>371.645</b>	<b>398.906</b>	<b>398.906</b>	<b>355.157</b>	<b>-11,0</b>
<b>TAŞIT ARAÇLARI TOPLAM / Motor Vehicles Total</b>	<b>937.015</b>	<b>970.124</b>	<b>970.124</b>	<b>1.018.247</b>	<b>5,0</b>
TRAKTÖR / F.Tractor	17.038	18.154	18.154	16.752	-7,7
<b>TRAKTÖR TOPLAM / F.Tractor Total</b>	<b>17.038</b>	<b>18.154</b>	<b>18.154</b>	<b>16.752</b>	<b>-7,7</b>
<b>GENEL TOPLAM / GRAND TOTAL</b>	<b>954.053</b>	<b>988.278</b>	<b>988.278</b>	<b>1.034.999</b>	<b>4,7</b>

**Üretici Bazında İhracat (adet)**  
Exports by Manufacturer (unit)

Üreticiler / Manufacturers	2021	2022	1-12 / 2022	1-12 / 2023
A.I.O.S.	1.100	911	911	1.102
FORD OTOSAN	287.609	297.828	297.828	311.104
HATTAT TRAKTÖR	862	1.059	1.059	736
HYUNDAI ASSAN	138.739	176.664	176.664	205.200
KARSAN	2.135	301	301	428
M. BENZ TÜRK	13.911	15.674	15.674	18.062
MAN TÜRKİYE	1.573	1.786	1.786	2.933
OTOKAR	749	1.506	1.506	2.584
OYAK RENAULT	187.923	176.844	176.844	230.397
TEMSA	599	587	587	1.161
TOFAŞ	112.465	121.477	121.477	60.479
TOYOTA	187.907	176.546	176.546	184.797
TÜRK TRAKTÖR	16.176	17.095	17.095	16.016
<b>GENEL TOPLAM / Grand Total</b>	<b>951.748</b>	<b>988.278</b>	<b>988.278</b>	<b>1.034.999</b>



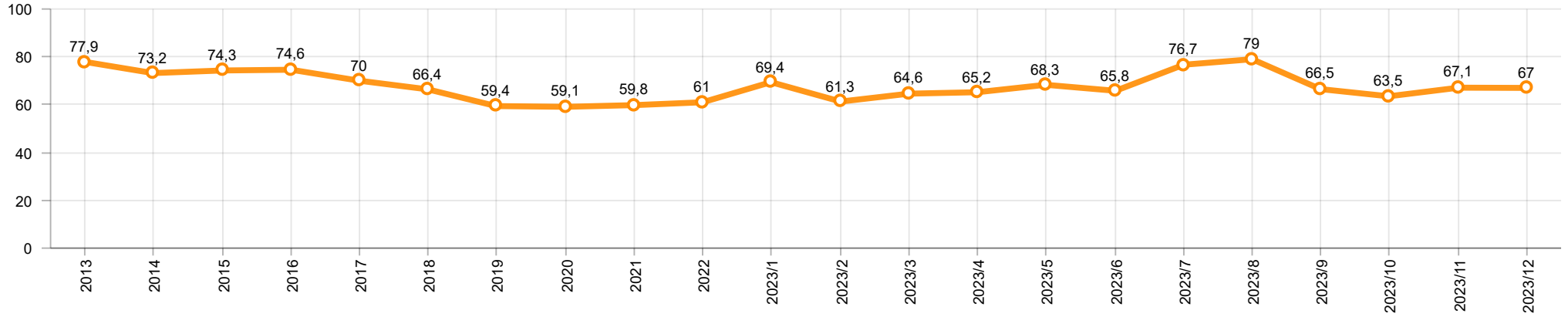
**Otomotiv Ana ve Yan Sanayii İhracatı (ABD \$)**  
CBU and CKD Exports - \$

Sektör / Sector	2021	2022	OCAK - ARALIK / January - December 2022	OCAK - ARALIK / January - December 2023	2023 / 2022 %
<b>Toplam Yan Sanayi / Total Component Industry</b>	<b>11.824.049.653,01</b>	<b>12.826.712.028,21</b>	<b>12.826.712.028,21</b>	<b>14.085.757.341,4</b>	<b>9,8</b>
İç ve Dış Lastik / Tyres	1.630.367.018,49	1.766.728.479,75	1.766.728.479,75	1.724.883.653,44	-2,4
Emniyet Camı / Safety Glasses	203.192.140,55	234.400.901,69	234.400.901,69	263.108.396,94	12,2
Motor / Engine	296.695.616,13	233.029.231,53	233.029.231,53	253.590.231,89	8,8
Akümülatör / Batteries	509.199.445,03	547.705.920,77	547.705.920,77	482.673.727,33	-11,9
Diğer Aksam ve Parça / Spare Parts&Components	9.184.595.432,81	10.044.847.494,47	10.044.847.494,47	11.361.501.331,8	13,1
<b>Toplam Ana Sanayi / Total Vehicle Industry</b>	<b>18.048.636.689,96</b>	<b>18.672.498.545,28</b>	<b>18.672.498.545,28</b>	<b>21.611.804.375,57</b>	<b>15,7</b>
Otobüs / Bus	1.014.817.251,08	1.199.777.172,44	1.199.777.172,44	1.786.354.748,27	48,9
Midibüs-Minibüs / Midibus-Minibus	193.913.261,22	162.966.486,11	162.966.486,11	343.838.660,91	111,0
Otomobil / P.Cars	9.272.072.907,39	9.069.545.936,14	9.069.545.936,14	10.934.400.136,75	20,6
Kamyon-Kamyonet / Truck-Pick Up&Van	5.420.090.951,32	5.633.409.584,55	5.633.409.584,55	5.647.667.250,84	0,3
Römork ve Yarı Römork / Trailer-Semi Trailer	609.758.049,6	762.960.672,12	762.960.672,12	778.263.797,44	2,0
Çekici / Tractor	1.018.262.590,07	1.266.205.170,15	1.266.205.170,15	1.527.261.816,27	20,6
Tarım Traktörü / Farm Tractor	519.721.679,28	577.633.523,77	577.633.523,77	594.017.965,09	2,8
<b>Toplam / Total</b>	<b>29.872.686.342,97</b>	<b>31.499.210.573,49</b>	<b>31.499.210.573,49</b>	<b>35.697.561.716,97</b>	<b>13,3</b>

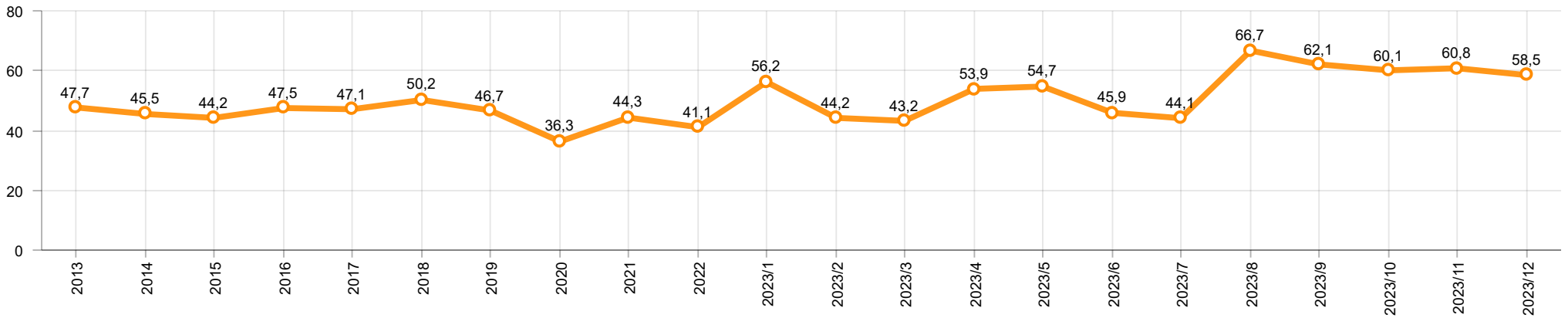
Kaynak: Uludağ İhracatçı Birlikleri . ÜİB tarafından OSD için özel olarak analiz edilen Otomotiv İhracatı kapsamında; ÜİB Türkiye Geneli Otomotiv Endüstrisi sınıflandırmasına kıyasla “Römork ve Yarı Römork” , “Tarım Traktörü” verileri dahil edilmekte; “Kullanılmış Araçlar” ,”İki Tekerlekli Taşıtlar” , “Demiryolu Taşıtları” hariç tutulmaktadır.

Source: Uludağ Exporters Association – Special Analyze for OSD.Compared to Turkish General Automotive Industry classification, this special analyze includes; farms tractors, trailers and semi-trailers, does not include; used vehicles, two-wheeled vehicles and railway vehicles

**Otomobil Pazarında İthalatın Payı (%)**  
**Import Share in P.Car Market (%)**



**Hafif Ticari Araçlar Pazarında İthalatın Payı (%)**  
**Import Share in LCV Market (%)**



Araç Tipleri / Vehicle Types	1	2	3	4	5	6	7	8	9	10	11	12	Toplam / Total
<b>OTOMOBİL - Pass.Car</b>	<b>51.122</b>	<b>46.473</b>	<b>59.168</b>	<b>48.634</b>	<b>58.456</b>	<b>61.620</b>	<b>50.196</b>	<b>50.261</b>	<b>47.918</b>	<b>66.456</b>	<b>61.237</b>	<b>61.549</b>	<b>663.090</b>
KAMYON - H. Truck	1.294	1.789	1.757	1.222	1.834	1.701	2.026	1.557	2.038	2.377	2.400	1.348	21.343
K.KAMYON - L. Truck	25	18	19	1	33	60	11	3	19	10	5	19	223
KAMYONET - Pick Up	23.167	26.083	29.741	21.455	21.723	23.148	24.290	14.905	23.243	26.733	28.789	27.775	291.052
OTOBÜS - Bus	479	584	754	709	788	758	756	757	880	857	1.038	1.087	9.447
MİNİBÜS - Minibus	3.212	3.734	4.144	3.268	3.070	3.174	3.453	2.305	2.975	1.551	357	178	31.421
MİDİBÜS - Midibus	82	82	118	122	115	188	143	159	135	142	193	192	1.671
<b>TİCARİ ARAÇLAR TOPLAMI - CV Total</b>	<b>28.259</b>	<b>32.290</b>	<b>36.533</b>	<b>26.777</b>	<b>27.563</b>	<b>29.029</b>	<b>30.679</b>	<b>19.686</b>	<b>29.290</b>	<b>31.670</b>	<b>32.782</b>	<b>30.599</b>	<b>355.157</b>
<b>TAŞIT ARAÇLARI TOPLAMI - MV Total</b>	<b>79.381</b>	<b>78.763</b>	<b>95.701</b>	<b>75.411</b>	<b>86.019</b>	<b>90.649</b>	<b>80.875</b>	<b>69.947</b>	<b>77.208</b>	<b>98.126</b>	<b>94.019</b>	<b>92.148</b>	<b>1.018.247</b>
TRAKTÖR - F.Tractor	1.718	1.698	1.813	1.681	1.680	1.605	1.677	1.216	1.374	1.186	717	387	16.752
<b>GENEL TOPLAM - Grand Total</b>	<b>81.099</b>	<b>80.461</b>	<b>97.514</b>	<b>77.092</b>	<b>87.699</b>	<b>92.254</b>	<b>82.552</b>	<b>71.163</b>	<b>78.582</b>	<b>99.312</b>	<b>94.736</b>	<b>92.535</b>	<b>1.034.999</b>

**Otomobil / P.Car**

Firmalar / Firms	1	2	3	4	5	6	7	8	9	10	11	12	Toplam / Total
FORD OTOSAN	-	-	-	-	-	-	-	-	-	-	-	-	-
HYUNDAI ASSAN	20.026	16.310	18.880	16.060	18.470	14.304	18.197	10.515	18.720	18.000	17.900	17.818	205.200
OYAK RENAULT	9.728	18.194	20.350	14.713	20.315	28.215	14.138	21.309	9.476	26.902	24.358	22.699	230.397
TOFAŞ	507	1.646	2.954	3.171	3.998	3.393	4.020	2.862	5.950	5.489	4.705	4.001	42.696
TOYOTA	20.861	10.323	16.984	14.690	15.673	15.708	13.841	15.575	13.772	16.065	14.274	17.031	184.797
<b>TOPLAM - Total</b>	<b>51.122</b>	<b>46.473</b>	<b>59.168</b>	<b>48.634</b>	<b>58.456</b>	<b>61.620</b>	<b>50.196</b>	<b>50.261</b>	<b>47.918</b>	<b>66.456</b>	<b>61.237</b>	<b>61.549</b>	<b>663.090</b>

**Kamyonet / Pick-up**

Firmalar / Firms	1	2	3	4	5	6	7	8	9	10	11	12	Toplam / Total
A.I.O.S.	-	-	-	-	-	-	-	-	-	-	-	-	-
FORD OTOSAN	20.603	23.319	26.833	20.387	20.049	22.480	22.594	14.353	23.173	24.773	27.397	27.013	272.974
KARSAN	-	-	-	-	-	-	-	-	-	-	-	-	-
OTOKAR	-	-	-	-	22	20	-	-	34	45	40	134	295
TOFAŞ	2.564	2.764	2.908	1.068	1.652	648	1.696	552	36	1.915	1.352	628	17.783
<b>TOPLAM - Total</b>	<b>23.167</b>	<b>26.083</b>	<b>29.741</b>	<b>21.455</b>	<b>21.723</b>	<b>23.148</b>	<b>24.290</b>	<b>14.905</b>	<b>23.243</b>	<b>26.733</b>	<b>28.789</b>	<b>27.775</b>	<b>291.052</b>

**Minibüs / Minibus**

Firmalar / Firms	1	2	3	4	5	6	7	8	9	10	11	12	Toplam / Total
FORD OTOSAN	3.212	3.734	4.138	3.268	3.070	3.160	3.451	2.277	2.916	1.535	304	123	31.188
KARSAN	-	-	6	-	-	14	2	28	59	16	53	55	233
<b>TOPLAM - Total</b>	<b>3.212</b>	<b>3.734</b>	<b>4.144</b>	<b>3.268</b>	<b>3.070</b>	<b>3.174</b>	<b>3.453</b>	<b>2.305</b>	<b>2.975</b>	<b>1.551</b>	<b>357</b>	<b>178</b>	<b>31.421</b>

**Kamyon / Truck**

Firmalar / Firms	1	2	3	4	5	6	7	8	9	10	11	12	Toplam / Total
A.I.O.S.	24	18	2	-	19	48	-	-	-	-	-	-	111
FORD OTOSAN	459	619	732	548	611	473	733	576	574	595	476	546	6.942
KARSAN	-	-	-	-	-	-	-	-	-	-	-	-	-
M. BENZ TÜRK	835	1.170	1.025	674	1.223	1.228	1.293	981	1.464	1.782	1.924	802	14.401
OTOKAR	1	-	-	1	6	2	6	1	10	9	5	19	60
<b>TEMSA</b>	-	-	<b>17</b>	-	<b>8</b>	<b>10</b>	<b>5</b>	<b>2</b>	<b>9</b>	<b>1</b>	-	-	<b>52</b>
<b>TOPLAM - Total</b>	<b>1.319</b>	<b>1.807</b>	<b>1.776</b>	<b>1.223</b>	<b>1.867</b>	<b>1.761</b>	<b>2.037</b>	<b>1.560</b>	<b>2.057</b>	<b>2.387</b>	<b>2.405</b>	<b>1.367</b>	<b>21.566</b>

**Midibüs / Midibus**

Firmalar / Firms	1	2	3	4	5	6	7	8	9	10	11	12	Toplam / Total
A.I.O.S.	39	35	54	28	39	88	38	65	58	56	123	110	733
KARSAN	-	24	19	2	5	15	9	1	8	3	12	18	116
OTOKAR	39	12	11	67	53	40	57	56	46	53	9	30	473
TEMSA	4	11	34	25	18	45	39	37	23	30	49	34	349
<b>TOPLAM - Total</b>	<b>82</b>	<b>82</b>	<b>118</b>	<b>122</b>	<b>115</b>	<b>188</b>	<b>143</b>	<b>159</b>	<b>135</b>	<b>142</b>	<b>193</b>	<b>192</b>	<b>1.671</b>

**Otobüs / Bus**

Firmalar / Firms	1	2	3	4	5	6	7	8	9	10	11	12	Toplam / Total
A.I.O.S.	11	21	42	26	22	22	16	24	30	12	12	20	258
KARSAN	-	2	18	-	5	15	-	1	-	6	23	9	79
M. BENZ TÜRK	285	278	320	252	316	229	344	296	266	319	358	398	3.661
MAN TÜRKİYE	86	133	218	268	266	311	151	166	325	266	343	400	2.933
OTOKAR	83	137	96	90	113	138	158	137	175	189	236	204	1.756
TEMSA	14	13	60	73	66	43	87	133	84	65	66	56	760
<b>TOPLAM - Total</b>	<b>479</b>	<b>584</b>	<b>754</b>	<b>709</b>	<b>788</b>	<b>758</b>	<b>756</b>	<b>757</b>	<b>880</b>	<b>857</b>	<b>1.038</b>	<b>1.087</b>	<b>9.447</b>

**Traktör / F.Tractor**

Firmalar / Firms	1	2	3	4	5	6	7	8	9	10	11	12	Toplam / Total
HATTAT TRAKTÖR	80	44	47	80	50	43	39	116	61	65	51	60	736
TÜRK TRAKTÖR	1.638	1.654	1.766	1.601	1.630	1.562	1.638	1.100	1.313	1.121	666	327	16.016
<b>TOPLAM - Total</b>	<b>1.718</b>	<b>1.698</b>	<b>1.813</b>	<b>1.681</b>	<b>1.680</b>	<b>1.605</b>	<b>1.677</b>	<b>1.216</b>	<b>1.374</b>	<b>1.186</b>	<b>717</b>	<b>387</b>	<b>16.752</b>

Firmalar / Firms	2022 Toplam / Total	1	2	3	4	5	6	7	8	9	10	11	12	Toplam / Total
Alfa Romeo	820	138	235	204	131	428	163	297	145	85	92	124	55	2.097
Aston Martin	28	3	-	2	1	5	3	2	1	2	1	1	2	23
Audi	14.554	848	1.662	2.457	2.044	2.006	1.834	2.008	1.675	1.637	1.581	1.721	3.405	22.878
Bentley	15	3	2	5	-	1	5	4	3	4	4	1	4	36
BMW	18.056	580	1.692	2.645	2.123	2.157	1.343	1.965	1.995	1.909	1.595	2.129	3.668	23.801
BYD	-	-	-	-	-	-	-	-	-	-	-	552	287	839
Chery	-	-	-	629	1.401	3.509	4.218	5.030	6.100	5.636	4.517	4.291	5.259	40.590
Citroen	21.913	1.412	2.198	3.305	2.816	5.607	6.621	3.207	3.168	2.920	3.755	4.256	6.130	45.395
CUPRA	2.792	112	161	1.084	715	451	1.106	1.086	955	796	1.161	872	1.666	10.165
Dacia	36.000	5.074	3.312	3.716	3.884	2.837	2.602	6.235	2.666	1.865	2.653	2.358	4.137	41.339
DFSK	352	48	69	109	12	35	8	1	5	-	-	-	6	293
DS	1.829	106	287	324	434	433	553	570	131	235	100	100	238	3.511
Ferrari	22	-	-	5	3	2	2	2	2	1	4	2	2	25
Fiat	276	23	7	220	54	125	180	92	136	232	56	35	45	1.205
Ford	8.421	558	1.510	2.639	2.610	3.121	2.585	1.970	2.263	2.476	2.096	3.459	4.310	29.597
Honda	21.429	1.196	1.355	1.681	1.380	2.228	1.598	1.618	1.659	1.651	1.680	2.108	3.168	21.322
HONGQI	-	-	-	-	-	-	-	-	-	-	15	3	1	19
Hyundai	14.198	804	656	906	1.221	610	1.344	990	1.420	636	1.464	1.481	1.556	13.088
Jaguar	90	1	4	16	9	32	6	2	6	5	13	15	12	121
Jeep	2.422	150	160	158	346	325	240	394	224	286	371	531	437	3.622
Kia	18.462	733	1.439	1.737	1.667	1.890	1.996	1.623	1.757	1.518	1.850	1.562	2.857	20.629
Lamborghini	14	-	1	2	2	-	3	2	1	1	1	3	6	22
Land Rover	1.111	185	126	192	154	192	51	172	272	265	302	260	280	2.451
LEAPMOTOR	-	-	-	-	80	50	70	20	30	50	10	45	-	355
Lexus	336	15	5	29	86	57	67	43	15	30	46	52	62	507
Maserati	314	7	14	85	83	86	32	65	37	28	43	16	37	533
Mazda	181	10	16	20	17	20	20	20	20	30	30	-	-	203
Mercedes-Benz	18.661	573	950	1.448	2.860	1.256	2.206	1.438	2.835	2.810	2.309	2.762	3.199	24.646
MG	1.627	420	403	570	641	790	450	1.820	1.175	1.093	2.505	2.007	2.584	14.458
Mini	1.385	61	109	262	71	315	171	219	304	289	223	303	306	2.633
Mitsubishi	583	2	35	30	31	24	23	19	14	13	12	2	3	208
Nissan	9.337	728	750	607	2.762	1.066	884	1.460	968	1.875	2.775	3.388	4.015	21.278
Opel	30.378	1.476	3.519	4.706	5.107	8.798	8.393	6.256	3.986	3.052	3.854	4.890	7.020	61.057
Peugeot	23.345	1.628	5.065	6.874	4.659	6.855	5.645	6.659	3.353	3.674	3.622	4.252	6.263	58.549
Porsche	668	184	98	95	50	96	102	69	129	85	68	66	116	1.158
Renault	17.713	1.057	1.618	455	851	1.070	3.009	2.269	3.455	1.906	2.671	1.996	3.666	24.023
Seat	6.142	368	395	1.030	992	831	763	918	839	479	1.098	1.180	2.036	10.929
SERES	-	-	-	-	-	-	-	-	-	2	-	-	-	2
Skoda	19.464	2.740	2.971	4.234	2.846	2.759	2.259	2.579	2.086	2.316	2.616	3.151	4.484	35.041
SKYWELL	-	-	90	95	127	50	209	50	50	750	620	500	-	2.541
Ssangyong	804	17	-	-	65	16	31	47	168	137	94	229	345	1.149
Subaru	622	72	113	125	72	163	134	35	30	44	15	85	78	966
Suzuki	3.601	137	636	170	244	227	496	993	459	368	314	470	864	5.378
TESLA	-	-	-	-	-	-	-	-	-	4.700	500	900	550	6.650
Toyota	5.767	1.003	475	954	485	896	1.370	1.569	1.171	857	755	1.297	1.586	12.418
Volkswagen	49.695	3.049	3.235	6.176	6.326	7.512	5.023	10.500	5.186	4.857	4.149	6.699	8.381	71.093
Volvo	8.228	368	732	1.150	964	603	1.340	1.273	751	924	842	1.181	1.518	11.646
<b>GENEL TOPLAM - Grand Total</b>	<b>361.655</b>	<b>25.889</b>	<b>36.105</b>	<b>51.151</b>	<b>50.426</b>	<b>59.534</b>	<b>59.158</b>	<b>65.591</b>	<b>51.645</b>	<b>52.529</b>	<b>52.482</b>	<b>61.335</b>	<b>84.644</b>	<b>650.489</b>

Firmalar / Firms	2022 Toplam / Total	1	2	3	4	5	6	7	8	9	10	11	12	Toplam / Total
<b>Citroen</b>	<b>6.918</b>	957	1.360	2.043	1.397	2.921	1.393	1.089	1.482	1.030	1.307	1.387	1.392	<b>17.758</b>
<b>DFSK</b>	-	-	-	-	-	-	-	-	-	-	-	-	5	<b>5</b>
<b>Fiat</b>	<b>2.561</b>	165	487	150	822	401	1.593	1.385	2.224	1.341	2.262	1.981	2.678	<b>15.489</b>
<b>Ford</b>	<b>1.323</b>	111	58	141	32	29	124	238	266	259	131	208	671	<b>2.268</b>
<b>Hyundai</b>	<b>2.935</b>	248	188	513	555	513	435	494	672	592	557	422	693	<b>5.882</b>
<b>Isuzu</b>	<b>1.317</b>	64	91	99	218	246	116	191	110	168	59	42	241	<b>1.645</b>
<b>Iveco</b>	<b>2.966</b>	80	177	94	311	333	289	91	276	263	291	318	404	<b>2.927</b>
<b>Kia</b>	<b>1.905</b>	-	117	188	94	130	152	205	306	246	243	425	604	<b>2.710</b>
<b>Land Rover</b>	<b>419</b>	2	83	19	-	52	93	52	148	141	-	55	-	<b>645</b>
<b>MAXUS</b>	-	-	-	-	-	-	-	-	-	-	-	78	34	<b>112</b>
<b>Mercedes-Benz</b>	<b>6.327</b>	598	653	649	963	117	660	486	908	925	758	1.023	1.554	<b>9.294</b>
<b>Mitsubishi</b>	<b>1.437</b>	93	69	-	-	-	-	-	-	-	-	-	1	<b>163</b>
<b>Opel</b>	<b>6.347</b>	408	1.202	1.104	1.416	1.873	716	1.072	1.072	669	503	1.383	1.390	<b>12.808</b>
<b>Peugeot</b>	<b>9.321</b>	1.157	1.487	1.983	1.650	3.099	790	1.489	1.649	1.159	1.345	2.108	2.167	<b>20.083</b>
<b>Renault</b>	<b>11.433</b>	551	1.557	1.273	1.476	999	944	2.334	2.049	1.958	1.434	1.499	2.080	<b>18.154</b>
<b>Ssangyong</b>	<b>489</b>	114	69	77	122	104	92	80	85	56	73	61	135	<b>1.068</b>
<b>Toyota</b>	<b>11.661</b>	1.067	776	806	883	932	932	1.107	1.171	1.020	918	2.194	1.850	<b>13.656</b>
<b>Volkswagen</b>	<b>10.646</b>	2.027	1.466	1.527	1.002	1.452	923	1.392	1.128	1.232	1.400	1.163	2.971	<b>17.683</b>
<b>GENEL TOPLAM - Grand Total</b>	<b>78.400</b>	<b>7.642</b>	<b>9.840</b>	<b>10.666</b>	<b>10.941</b>	<b>13.201</b>	<b>9.252</b>	<b>11.705</b>	<b>13.546</b>	<b>11.059</b>	<b>11.281</b>	<b>14.347</b>	<b>18.870</b>	<b>142.350</b>