



OTOMOTİV SANAYİİ DERNEĐİ  
AUTOMOTIVE MANUFACTURERS ASSOCIATION

# OTOMOTİV SEKTÖRÜ AYLIK DEĐERLENDİRME RAPORU MART 2025

AUTOMOTIVE INDUSTRY MONTHLY REPORT  
March 2025

OSD "OICA" Üyesidir  O I C A OSD is a Member of "OICA"

	3 - 2024	3 - 2025	%	1 - 3 / 2024	1 - 3 / 2025	%	4/2023 - 3/2024	4/2024 - 3/2025	%
Otomobil Üretimi/P.Cars Production	87.260	79.423	-9,0	238.274	220.927	-7,3	968.890	887.166	-8,4
Toplam Üretim/Total Production	136.611	124.105	-9,2	377.070	344.120	-8,7	1.478.866	1.332.346	-9,9
Otomobil Pazar/P.Cars Market	87.071	91.828	5,5	233.389	223.793	-4,1	1.025.309	970.745	-5,3
Toplam Pazar/Total Market	114.144	121.510	6,5	307.426	285.818	-7,0	1.343.455	1.264.181	-5,9
Otomobil İthalat/P.Cars Import	61.466	63.282	3,0	159.682	152.199	-4,7	697.026	682.641	-2,1
Toplam İthalat/Total Import	78.233	85.581	9,4	204.500	196.687	-3,8	875.269	885.706	1,2
Otomobil İhracat/P.Cars Export	54.120	56.716	4,8	154.318	149.843	-2,9	660.645	649.640	-1,7
Toplam İhracat/Total Export	91.924	96.531	5,0	256.862	254.683	-0,9	1.021.264	1.010.855	-1,0
Otomobil İhracat(\$)/P.Cars Export (\$)	845.578.364,79	1.066.210.468,62	26,1	2.471.507.066	2.758.092.226	11,6	10.827.030.333	11.570.659.433	6,9
Toplam İhracat(\$)/Total Export (\$)*	3.266.757.252,01	3.494.069.072,09	7,0	9.215.139.188	9.385.673.328	1,9	36.086.762.495	36.915.289.141	2,3

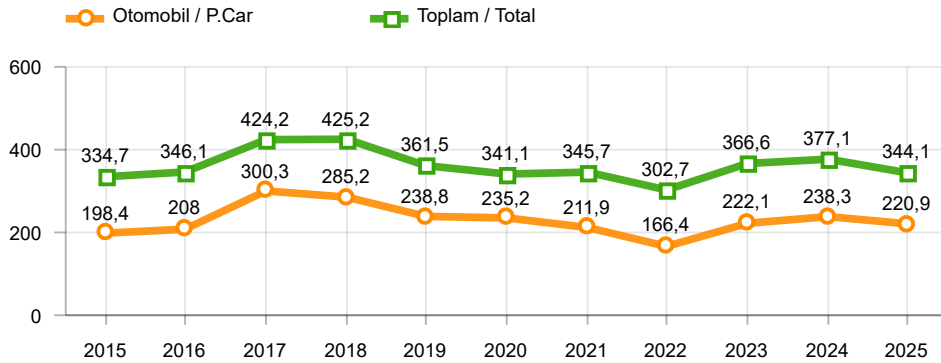
Parametreler/Parameters	3 - 2024	3 - 2025	%	1 - 3 / 2024	1 - 3 / 2025	%	4/2023 - 3/2024	4/2024 - 3/2025	%
ÜFE / PPI	3,3	1,9	-	11,6	7,2	-	45,3	35,2	-
TÜFE / CPI	3,2	2,5	-	15,1	10,1	-	57,5	51,3	-
Sanayi Endeksi / Industry Index	3,5	2,1	-	13,8	7,8	-	52,4	36,2	-
Dolar \$ ** (1 birim)	31,9	36,9	15,8	30,9	36,1	17,2	26,7	34,1	27,7
Euro € ** (1 birim)	34,7	39,8	14,9	33,5	38,0	13,5	28,9	36,6	26,4
Japon Yeni ¥ ** (100 birim)	21,2	24,6	16,2	20,7	23,6	14,0	18,3	22,3	21,6

\*Toplam Sanayi / Total Industry Including Components

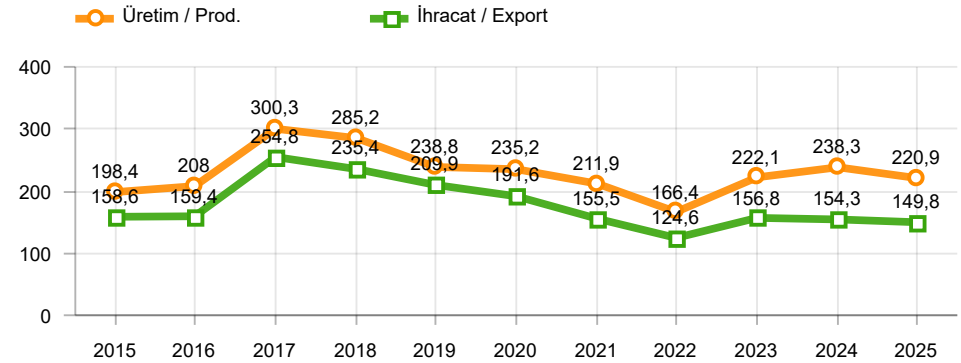
\*\* Ortalama Değerler / Average Values

Araç Tipleri / Types	3 / 2024	3 / 2025	3 % Değişim	1-3 / 2024	1-3 / 2025	1-3 % Değişim
OTOMOBİL / Pass.Car	87.260	79.423	-9,0	238.274	220.927	-7,3
<b>OTOMOBİL Toplam / Pass.Car Total</b>	<b>87.260</b>	<b>79.423</b>	<b>-9,0</b>	<b>238.274</b>	<b>220.927</b>	<b>-7,3</b>
B.KAMYON / H. Truck	3.167	2.965	-6,4	10.145	6.165	-39,2
K.KAMYON / L. Truck	505	444	-12,1	1.355	910	-32,8
KAMYONET / Pick Up	40.140	31.269	-22,1	112.336	89.348	-20,5
OTOBÜS / Bus	1.127	984	-12,7	3.159	2.636	-16,6
MINIBÜS / Minibus	3.881	8.581	121,1	10.368	22.974	121,6
MİDİBÜS / Midibus	531	439	-17,3	1.433	1.160	-19,1
<b>TİCARİ ARAÇLAR Toplam / Commercial Vehicles Total</b>	<b>49.351</b>	<b>44.682</b>	<b>-9,5</b>	<b>138.796</b>	<b>123.193</b>	<b>-11,2</b>
<b>TAŞIT ARAÇLARI Toplam / Motor Vehicles Total</b>	<b>136.611</b>	<b>124.105</b>	<b>-9,2</b>	<b>377.070</b>	<b>344.120</b>	<b>-8,7</b>
TRAKTÖR / F.Tractor	4.830	2.822	-41,6	13.855	8.179	-41,0
<b>TRAKTÖR Toplam / F.Tractor Total</b>	<b>4.830</b>	<b>2.822</b>	<b>-41,6</b>	<b>13.855</b>	<b>8.179</b>	<b>-41,0</b>
<b>GENEL TOPLAM / Grand Total</b>	<b>141.441</b>	<b>126.927</b>	<b>-10,3</b>	<b>390.925</b>	<b>352.299</b>	<b>-9,9</b>

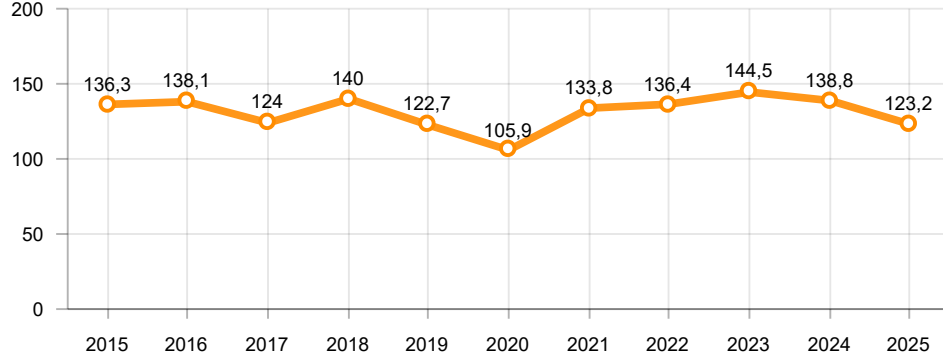
**Toplam Üretim ve Otomobil Üretimi (x1000)(OCAK - MART)**  
Total & P.Cars Production (x1000)(January - March)



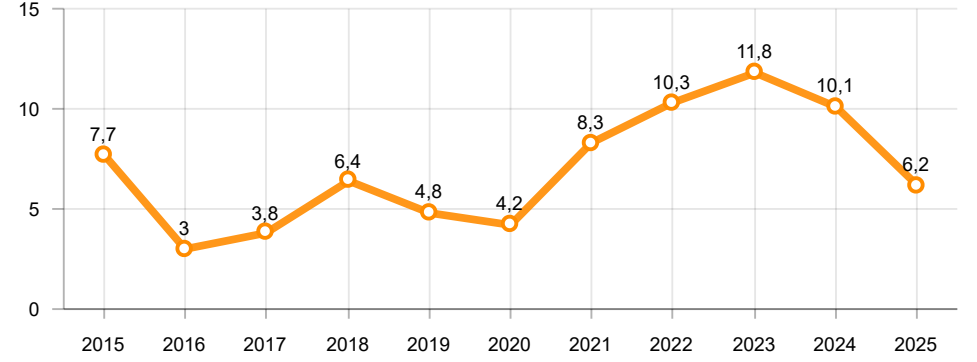
**Otomobil Üretimi ve İhracat (x1000)(OCAK - MART)**  
P.Cars Production & Exports (x1000)(January - March)



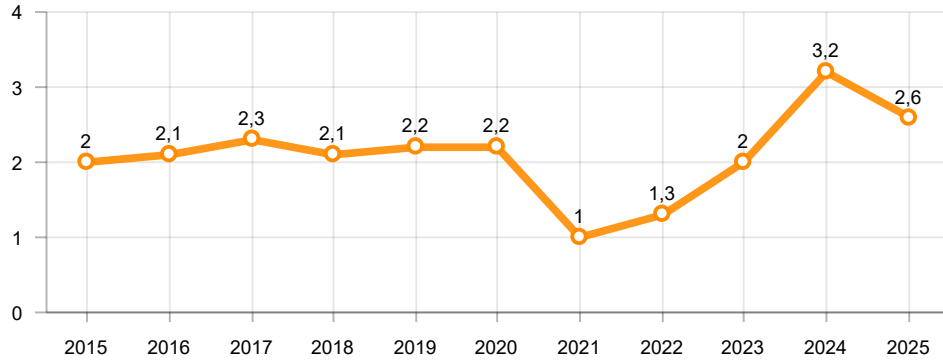
**Ticari Araç Üretimi (x1000)(OCAK - MART)**  
Commercial Vehicle Production (x1000)(January - March)



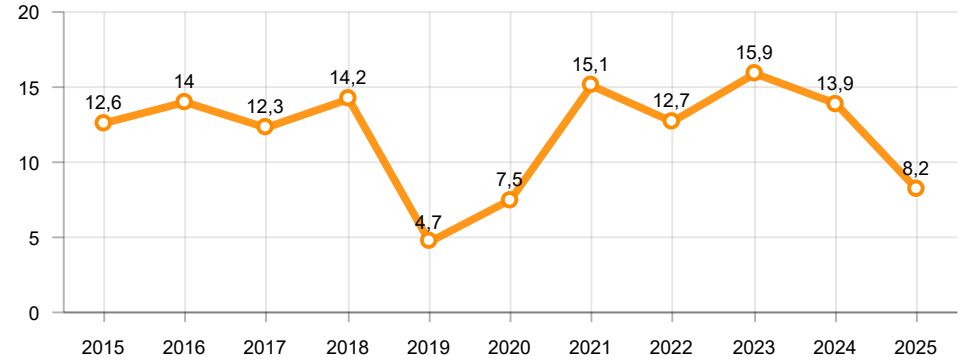
**Büyük Kamyon Üretimi (x1000)(OCAK - MART)**  
Heavy Truck Production (x1000)(January - March)

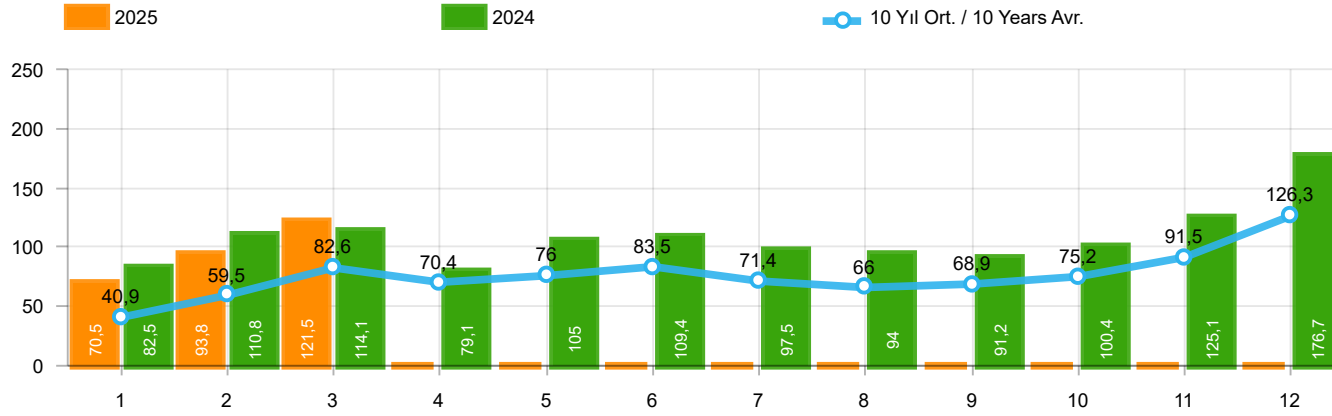


**Otobüs Üretimi (x1000)(OCAK - MART)**  
Bus Production (x1000)(January - March)



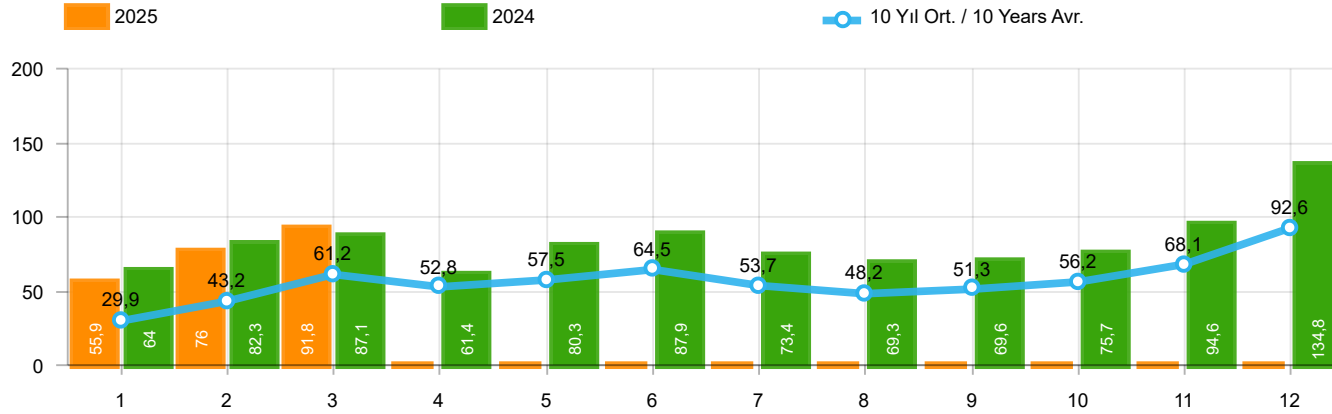
**Traktör Üretimi (x1000)(OCAK - MART)**  
F. Tractor Production (x1000)(January - March)





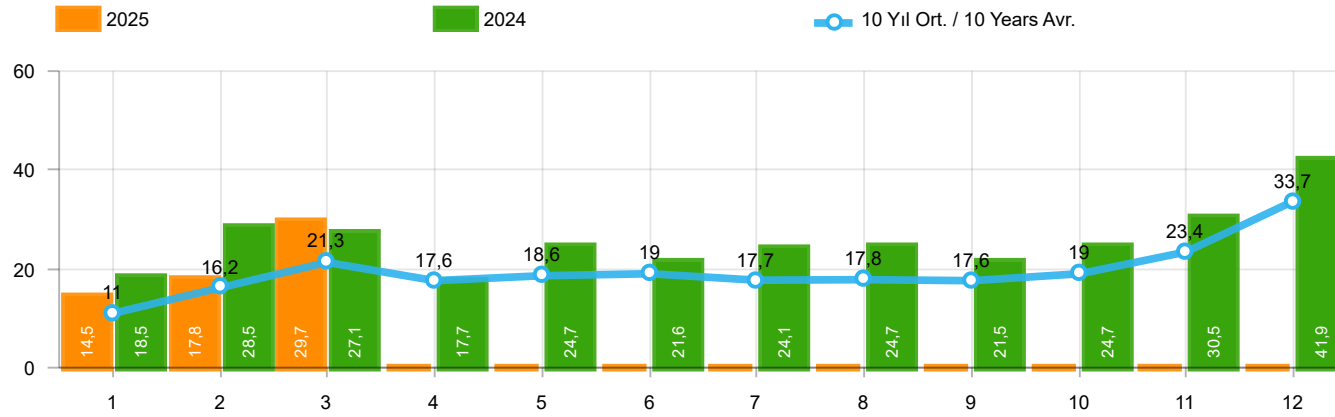
Aylar / Months	10 Yıl Ort / 10 Years Avr.	2025	%
1	40.890	70.460	72,3
2	59.482	93.848	57,8
3	82.576	121.510	47,1
TOPLAM/TOTAL	182.950	285.818	56,2

Yıl / Year	1	2	3	4	5	6	7	8	9	10	11	12	1-3 Toplam / Total	Toplam / Total	1-3 Yerli / Local	1-3 İthal / Import	İthal Oran / Import %
2015	37.256	59.221	89.765	96.182	85.804	91.071	87.358	85.244	67.181	67.086	88.431	164.464	186.242	1.019.063	70.708	115.534	62,0
2016	34.369	54.840	85.932	87.748	97.090	94.666	59.732	73.654	69.413	85.666	125.462	145.706	175.141	1.014.278	58.892	116.249	66,4
2017	36.640	48.585	76.178	78.231	88.066	85.820	84.727	74.818	74.046	94.439	103.772	141.507	161.403	986.829	60.091	101.312	62,8
2018	36.525	48.768	79.600	73.886	74.996	52.788	54.194	35.137	23.915	22.321	59.406	80.014	164.893	641.550	64.423	100.470	60,9
2019	14.847	25.569	50.651	31.944	33.947	43.899	18.442	26.832	43.068	50.288	59.575	92.885	91.067	491.947	40.693	50.374	55,3
2020	28.123	48.948	51.554	27.165	33.308	72.789	89.419	63.570	93.406	97.125	82.824	107.919	128.625	796.150	54.058	74.567	58,0
2021	45.308	61.325	100.046	64.551	57.510	83.304	49.732	60.573	59.717	60.064	64.087	66.633	206.679	772.850	88.367	118.312	57,2
2022	39.741	52.030	68.241	62.584	68.221	84.788	55.424	52.297	66.304	69.072	86.499	121.962	160.012	827.163	69.314	90.698	56,7
2023	53.578	84.781	109.658	102.076	116.227	116.352	117.647	93.409	100.862	105.181	119.527	164.748	248.017	1.284.046	102.960	145.057	58,5
2024	82.522	110.760	114.144	79.137	104.962	109.408	97.536	93.977	91.150	100.395	125.102	176.696	307.426	1.285.789	102.926	204.500	66,5
2025	70.460	93.848	121.510										285.818	285.818	89.131	196.687	68,8



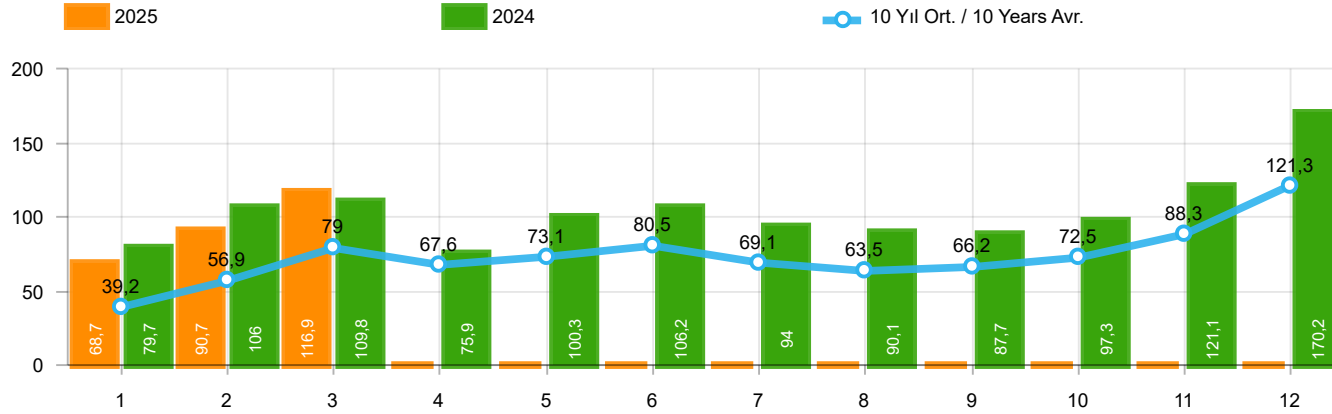
Aylar / Months	10 Yıl Ort / 10 Years Avr.	2025	%
1	29.886	55.944	87,2
2	43.247	76.021	75,8
3	61.241	91.828	49,9
TOPLAM / TOTAL	134.374	223.793	66,6

Yıl / Year	1	2	3	4	5	6	7	8	9	10	11	12	1-3 Toplam / Total	Toplam / Total	1-3 Yerli / Local	1-3 İthal / Import	İthal Oran / Import %
2015	24.498	40.817	61.676	70.211	62.878	67.766	64.218	61.753	47.088	47.954	62.397	114.340	126.991	725.596	34.745	92.246	72,6
2016	23.358	40.588	63.975	65.618	73.832	71.111	45.566	53.977	51.340	63.746	95.783	108.044	127.921	756.938	33.436	94.485	73,9
2017	25.689	34.658	55.616	57.998	65.799	66.164	62.384	54.890	53.423	70.488	75.956	99.694	115.963	722.759	35.720	80.243	69,2
2018	26.611	35.901	59.798	55.108	57.227	41.225	42.024	26.976	17.595	16.809	46.204	60.843	122.310	486.321	41.350	80.960	66,2
2019	10.979	19.205	38.628	24.416	27.126	36.024	15.398	21.544	35.308	39.996	47.803	70.829	68.812	387.256	28.388	40.424	58,7
2020	22.016	37.727	39.887	21.825	25.073	57.067	69.427	44.372	71.296	76.341	64.357	80.721	99.630	610.109	37.147	62.483	62,7
2021	35.358	44.749	76.357	48.375	43.138	62.348	36.311	44.756	43.408	40.512	42.982	43.559	156.464	561.853	60.100	96.364	61,6
2022	29.020	37.641	50.173	45.564	51.750	64.134	41.031	35.230	44.681	47.440	59.222	86.774	116.834	592.660	42.361	74.473	63,7
2023	37.288	58.907	79.226	77.398	87.418	91.135	87.416	69.131	78.971	82.611	91.424	126.416	175.421	967.341	62.276	113.145	64,5
2024	64.041	82.277	87.071	61.448	80.260	87.858	73.396	69.288	69.634	75.662	94.595	134.811	233.389	980.341	74.165	159.224	68,2
2025	55.944	76.021	91.828										223.793	223.793	71.594	152.199	68,0



Aylar / Months	10 Yıl Ort / 10 Years Avr.	2025	%
1	11.005	14.516	31,9
2	16.236	17.827	9,8
3	21.336	29.682	39,1
TOPLAM / TOTAL	48.577	62.025	27,7

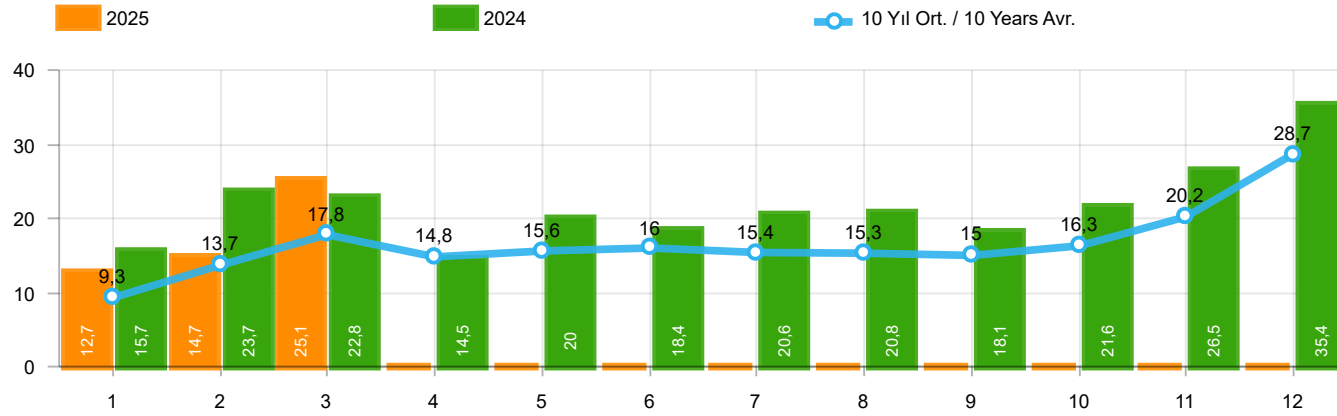
Yıl / Year	1	2	3	4	5	6	7	8	9	10	11	12	1-3 Toplam / Total	Toplam / Total	1-3 Yerli / Local	1-3 İthal / Import	İthal Oran / Import %
2015	12.758	18.404	28.089	25.971	22.926	23.305	23.140	23.491	20.093	19.132	26.034	50.124	59.251	293.467	35.963	23.288	39,3
2016	11.011	14.252	21.957	22.130	23.258	23.555	14.166	19.677	18.073	21.920	29.679	37.662	47.220	257.340	25.456	21.764	46,1
2017	10.951	13.927	20.562	20.233	22.267	19.656	22.343	19.928	20.623	23.951	27.816	41.813	45.440	264.070	24.371	21.069	46,4
2018	9.914	12.867	19.802	18.778	17.769	11.563	12.170	8.161	6.320	5.512	13.202	19.171	42.583	155.229	23.073	19.510	45,8
2019	3.868	6.364	12.023	7.528	6.821	7.875	3.044	5.288	7.760	10.292	11.772	22.056	22.255	104.691	12.305	9.950	44,7
2020	6.107	11.221	11.667	5.340	8.235	15.722	19.992	19.198	22.110	20.784	18.467	27.198	28.995	186.041	16.911	12.084	41,7
2021	9.950	16.576	23.689	16.176	14.372	20.956	13.421	15.817	16.309	19.552	21.105	23.074	50.215	210.997	28.267	21.948	43,7
2022	10.721	14.389	18.068	17.020	16.471	20.654	14.393	17.067	21.623	21.632	27.277	35.188	43.178	234.503	26.953	16.225	37,6
2023	16.290	25.874	30.432	24.678	28.809	25.217	30.231	24.278	21.891	22.570	28.103	38.332	72.596	316.705	40.684	31.912	44,0
2024	18.481	28.483	27.073	17.689	24.702	21.550	24.140	24.689	21.516	24.733	30.507	41.885	74.037	305.448	28.761	45.276	61,2
2025	14.516	17.827	29.682										62.025	62.025	17.537	44.488	71,7



Aylar / Months	10 Yıl Ort / 10 Years Avr.	2025	%
1	39.183	68.654	75,2
2	56.942	90.730	59,3
3	79.008	116.900	48,0
TOPLAM / TOTAL	175.133	276.284	57,8

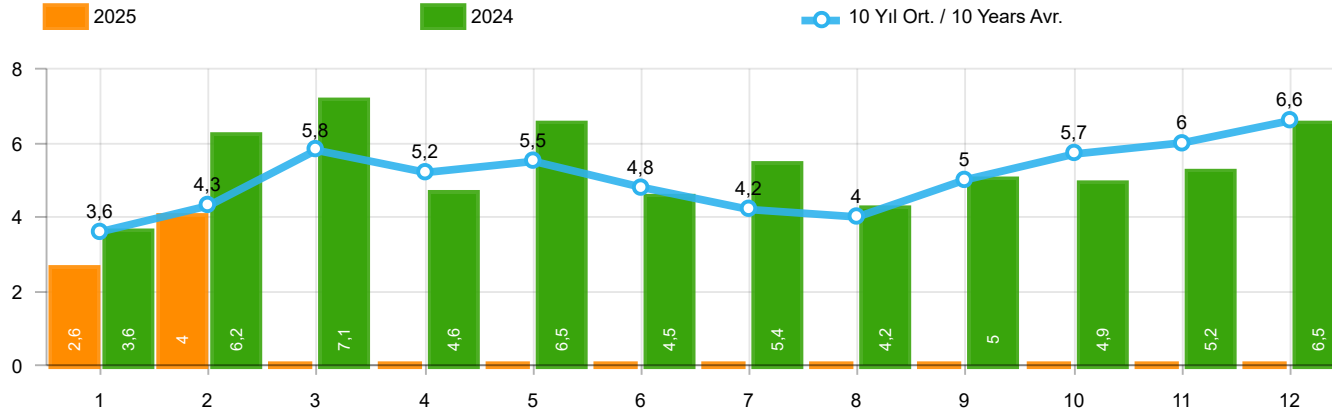
Yıl / Year	1	2	3	4	5	6	7	8	9	10	11	12	1-3 Toplam / Total	Toplam / Total	1-3 Yerli / Local	1-3 İthal / Import	İthal Oran / Import %
2015	34.615	55.331	83.302	91.602	81.542	86.158	83.836	82.577	64.025	64.255	84.601	156.173	173.248	968.017	60.533	112.715	65,1
2016	32.713	52.825	82.948	84.887	93.904	91.540	58.533	71.556	67.593	83.000	122.309	141.912	168.486	983.720	54.494	113.992	67,7
2017	35.323	46.965	73.802	75.988	85.422	83.658	82.297	72.536	71.352	91.752	100.859	136.240	156.090	956.194	56.013	100.077	64,1
2018	35.076	47.009	76.345	71.126	72.755	51.037	52.734	34.346	23.028	21.571	58.204	77.706	158.430	620.937	60.068	98.362	62,1
2019	14.373	24.875	49.221	30.971	33.016	42.688	17.927	26.246	41.992	49.075	58.176	90.500	88.469	479.060	38.979	49.490	55,9
2020	27.273	47.122	50.008	26.457	32.235	70.973	87.401	61.533	90.619	94.733	80.141	104.293	124.403	772.788	50.995	73.408	59,0
2021	43.728	58.504	96.428	61.488	54.734	79.819	47.849	58.454	57.141	56.746	60.216	62.243	198.660	737.350	83.231	115.429	58,1
2022	38.131	49.652	64.267	60.035	65.167	80.652	52.206	48.336	62.084	65.222	82.311	115.220	152.050	783.283	63.402	88.648	58,3
2023	50.894	81.148	103.929	97.679	111.556	112.163	113.959	89.454	96.793	101.367	115.040	158.653	235.971	1.232.635	94.678	141.293	59,9
2024	79.701	105.990	109.828	75.919	100.305	106.238	94.037	90.134	87.740	97.274	121.094	170.249	295.519	1.238.509	94.755	200.764	67,9
2025	68.654	90.730	116.900										276.284	276.284	82.928	193.356	70,0





Aylar / Months	10 Yıl Ort / 10 Years Avr.	2025	%
1	9.297	12.710	36,7
2	13.695	14.709	7,4
3	17.767	25.072	41,1
TOPLAM / TOTAL	40.759	52.491	28,8

Yıl / Year	1	2	3	4	5	6	7	8	9	10	11	12	1-3 Toplam / Total	Toplam / Total	1-3 Yerli / Local	1-3 İthal / Import	İthal Oran / Import %
2015	10.117	14.514	21.626	21.391	18.664	18.392	19.618	20.824	16.937	16.301	22.204	41.833	46.257	242.421	25.788	20.469	44,3
2016	9.355	12.237	18.973	19.269	20.072	20.429	12.967	17.579	16.253	19.254	26.526	33.868	40.565	226.782	21.058	19.507	48,1
2017	9.634	12.307	18.186	17.990	19.623	17.494	19.913	17.646	17.929	21.264	24.903	36.546	40.127	233.435	20.293	19.834	49,4
2018	8.465	11.108	16.547	16.018	15.528	9.812	10.710	7.370	5.433	4.762	12.000	16.863	36.120	134.616	18.718	17.402	48,2
2019	3.394	5.670	10.593	6.555	5.890	6.664	2.529	4.702	6.684	9.079	10.373	19.671	19.657	91.804	10.591	9.066	46,1
2020	5.257	9.395	10.121	4.632	7.162	13.906	17.974	17.161	19.323	18.392	15.784	23.572	24.773	162.679	13.848	10.925	44,1
2021	8.370	13.755	20.071	13.113	11.596	17.471	11.538	13.698	13.733	16.234	17.234	18.684	42.196	175.497	23.131	19.065	45,2
2022	9.111	12.011	14.094	14.471	13.417	16.518	11.175	13.106	17.403	17.782	23.089	28.446	35.216	190.623	21.041	14.175	40,3
2023	13.606	22.241	24.703	20.281	24.138	21.028	26.543	20.323	17.822	18.756	23.616	32.237	60.550	265.294	32.402	28.148	46,5
2024	15.660	23.713	22.757	14.471	20.045	18.380	20.641	20.846	18.106	21.612	26.499	35.438	62.130	258.168	20.590	41.540	66,9
2025	12.710	14.709	25.072										52.491	52.491	11.334	41.157	78,4



Aylar / Months	10 Yıl Ort / 10 Years Avr.	2025	%
1	3.561	2.577	-27,6
2	4.279	3.967	-7,3
TOPLAM / TOTAL	7.840	6.544	-16,5

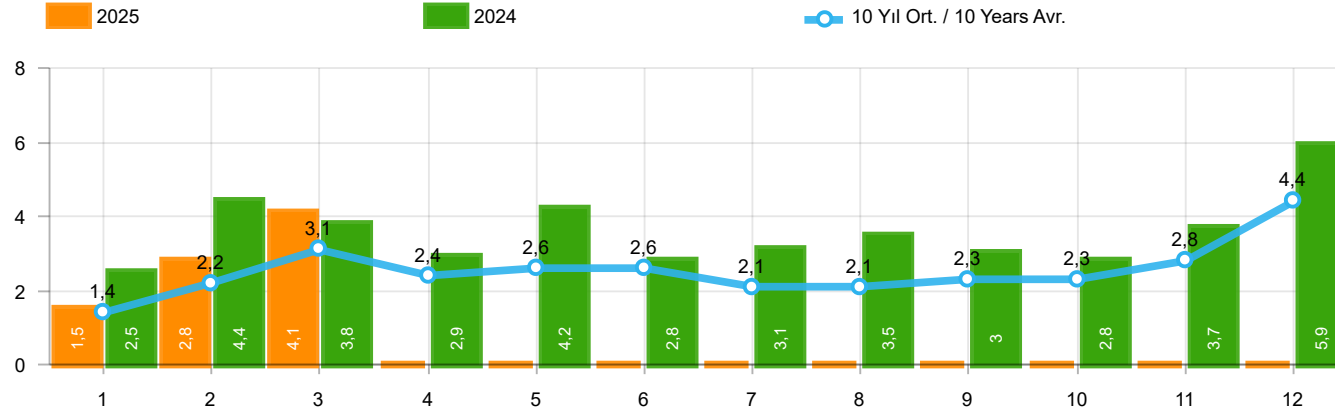
Yıl / Year	1	2	3	4	5	6	7	8	9	10	11	12	1-2 Toplam / Total	Toplam / Total
2015	3.124	3.984	5.460	6.383	6.078	5.748	4.677	5.044	4.765	7.049	6.898	7.564	7.108	66.774
2016	3.739	4.731	7.067	6.546	6.575	5.543	3.833	5.134	4.945	7.372	7.090	7.603	8.470	70.178
2017	3.974	4.964	6.773	6.780	7.057	5.356	5.003	4.396	6.064	7.734	7.457	7.351	8.938	72.909
2018	4.362	4.179	5.925	5.216	4.584	3.146	3.654	2.587	3.541	3.698	3.578	3.886	8.541	48.356
2019	1.311	1.401	2.143	2.126	2.229	1.538	2.039	1.579	2.284	2.828	3.037	3.782	2.712	26.297
2020	2.425	2.778	3.771	2.606	3.244	4.173	3.727	3.974	4.928	5.466	5.831	6.221	5.203	49.144
2021	4.411	5.395	6.845	5.581	4.200	5.571	3.846	3.093	6.100	5.351	6.901	6.776	9.806	64.070
2022	3.152	3.636	4.988	5.408	5.873	6.520	3.985	4.740	6.265	6.542	7.514	8.319	6.788	66.942
2023	5.533	5.569	7.959	6.433	8.511	6.269	6.221	5.072	5.943	5.897	6.219	8.275	11.102	77.901
2024	3.577	6.152	7.115	4.567	6.470	4.491	5.390	4.225	4.969	4.889	5.223	6.478	9.729	63.546
2025	2.577	3.967	-										6.544	6.544

Kaynak: TÜİK trafik kayıtları.

Rakamlar, son iki model yılına ait traktör tescillerinden oluşmaktadır.

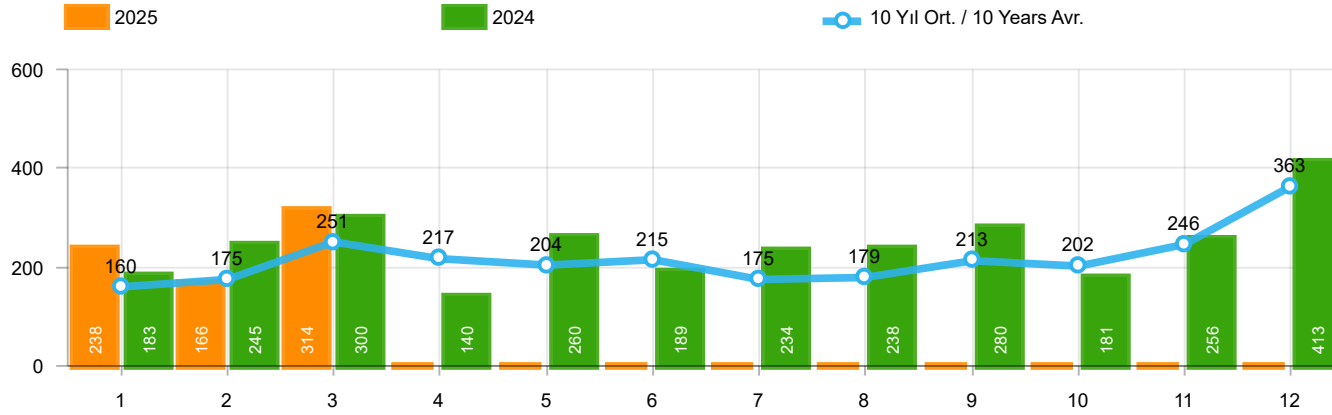
Source: Turkish Statistical Institute – Traffic registrations

Data represents the last two model year's farm tractors registration figures



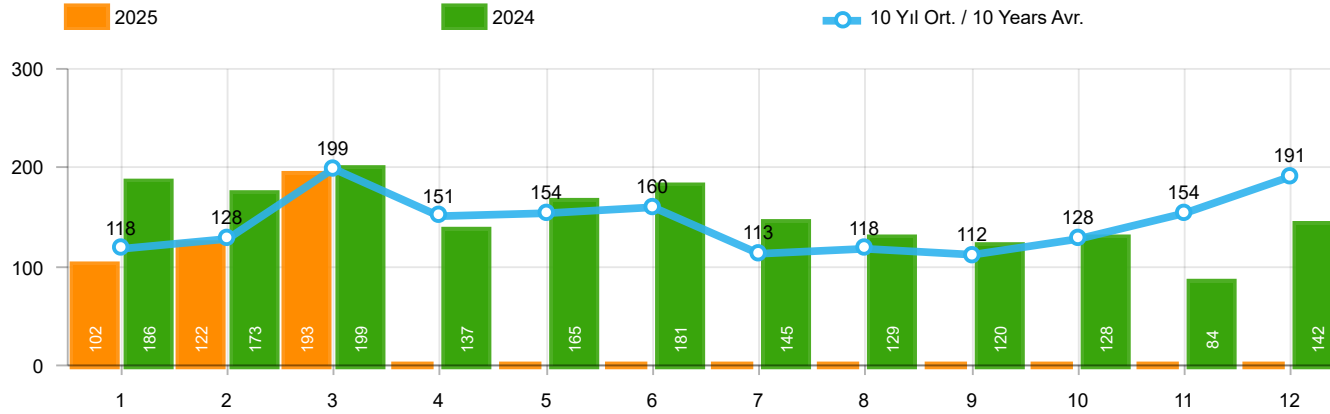
Aylar / Months	10 Yıl Ort / 10 Years Avr.	2025	%
1	1.430	1.466	2,5
2	2.238	2.830	26,5
3	3.119	4.103	31,6
TOPLAM / TOTAL	6.786	8.399	23,8

Yıl / Year	1	2	3	4	5	6	7	8	9	10	11	12	1-3 Toplam / Total	Toplam / Total	1-3 Yerli / Local	1-3 İthal / Import	İthal Oran / Import %
2015	2.215	3.346	5.699	3.729	3.600	4.253	2.922	2.211	2.687	2.266	3.146	7.307	11.260	43.381	8.466	2.794	24,8
2016	1.167	1.648	2.515	2.319	2.711	2.623	984	1.796	1.438	2.238	2.485	3.127	5.330	25.051	3.073	2.257	42,3
2017	931	1.290	1.982	1.888	2.184	1.891	1.974	1.860	2.284	2.188	2.487	4.438	4.203	25.397	2.978	1.225	29,1
2018	1.237	1.552	2.630	2.328	1.909	1.272	1.235	603	653	488	905	1.695	5.419	16.507	3.312	2.107	38,9
2019	342	579	1.255	842	728	981	435	497	854	1.047	1.100	2.087	2.176	10.747	1.292	884	40,6
2020	682	1.475	1.290	628	921	1.570	1.809	1.835	2.660	2.239	2.537	3.358	3.447	21.004	2.288	1.159	33,6
2021	1.366	2.633	3.319	2.788	2.617	3.238	1.799	1.942	2.377	3.067	3.549	4.045	7.318	32.740	4.435	2.883	39,4
2022	1.498	2.148	3.520	2.260	2.701	3.764	2.939	3.617	3.811	3.574	3.777	6.214	7.166	39.823	5.116	2.050	28,6
2023	2.406	3.356	5.162	3.951	4.321	3.820	3.334	3.526	3.674	3.425	4.077	5.642	10.924	46.694	7.160	3.764	34,5
2024	2.452	4.352	3.817	2.941	4.232	2.800	3.120	3.476	3.010	2.812	3.668	5.892	10.621	42.572	6.885	3.736	35,2
2025	1.466	2.830	4.103										8.399	8.399	5.068	3.331	39,7



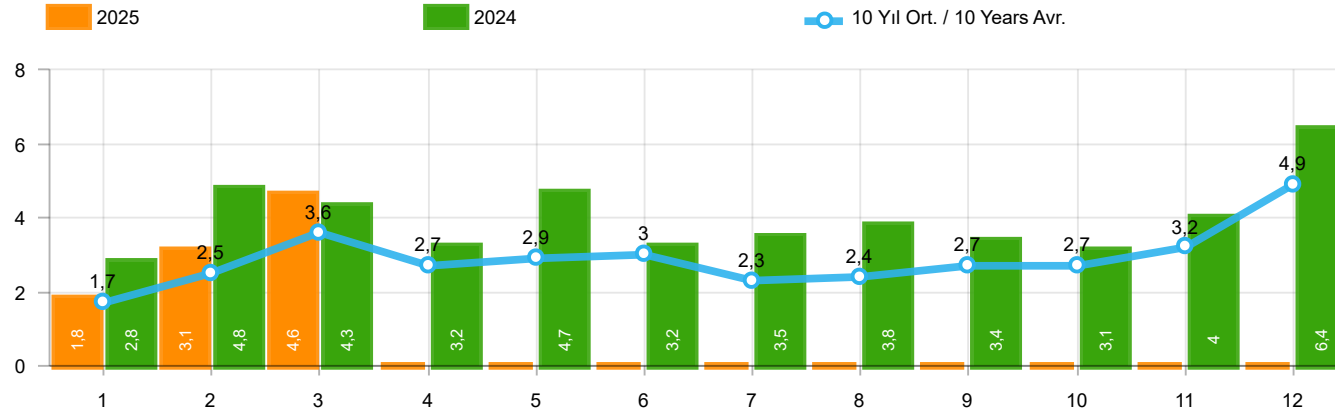
Aylar / Months	10 Yıl Ort / 10 Years Avr.	2025	%
1	160	238	48,4
2	175	166	-5,2
3	251	314	25,1
TOPLAM / TOTAL	587	718	22,4

Yıl / Year	1	2	3	4	5	6	7	8	9	10	11	12	1-3 Toplam / Total	Toplam / Total
2015	280	322	451	561	372	405	389	253	316	394	325	621	1.053	4.689
2016	309	158	251	302	261	196	139	220	241	230	354	431	718	3.092
2017	212	211	227	231	272	156	250	235	318	268	317	594	650	3.291
2018	134	142	410	296	207	315	180	146	160	155	184	425	686	2.754
2019	57	61	63	96	106	189	55	44	138	138	257	244	181	1.448
2020	104	221	128	35	97	134	111	123	77	71	82	137	453	1.320
2021	70	108	117	135	58	131	44	139	153	178	188	172	295	1.493
2022	82	132	234	131	220	224	147	169	227	154	217	292	448	2.229
2023	173	151	329	241	183	209	200	226	215	254	284	301	653	2.766
2024	183	245	300	140	260	189	234	238	280	181	256	413	728	2.919
2025	238	166	314										718	718



Aylar / Months	10 Yıl Ort / 10 Years Avr.	2025	%
1	118	102	-13,7
2	128	122	-4,4
3	199	193	-3,1
TOPLAM / TOTAL	445	417	-6,3

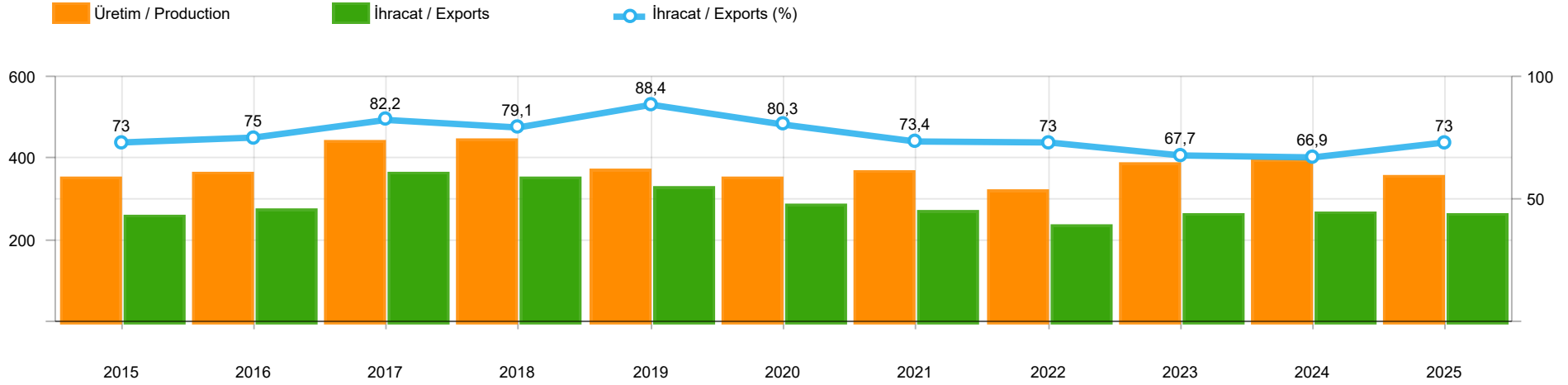
Yıl / Year	1	2	3	4	5	6	7	8	9	10	11	12	1-3 Toplam / Total	Toplam / Total	1-3 Yerli / Local	1-3 İthal / Import	İthal Oran / Import %
2015	146	222	313	290	290	255	211	203	153	171	359	363	681	2.976	656	25	3,7
2016	180	209	218	240	214	307	76	82	141	198	314	236	607	2.415	607	-	-
2017	174	119	167	124	188	115	206	187	92	231	109	235	460	1.947	450	10	2,2
2018	78	65	215	136	125	164	45	42	74	107	113	188	358	1.352	357	1	0,3
2019	75	54	112	35	97	41	25	45	84	28	42	54	241	692	241	-	-
2020	64	130	128	45	55	112	98	79	50	82	64	131	322	1.038	322	-	-
2021	144	80	182	140	101	116	40	38	46	73	134	173	406	1.267	406	-	-
2022	30	98	220	158	133	148	132	175	182	122	194	236	348	1.828	348	-	-
2023	105	126	238	205	167	160	154	203	180	135	126	152	469	1.951	469	-	-
2024	186	173	199	137	165	181	145	129	120	128	84	142	558	1.789	558	-	-
2025	102	122	193										417	417	417	-	-



Aylar / Months	10 Yıl Ort / 10 Years Avr.	2025	%
1	1.708	1.806	5,7
2	2.541	3.118	22,7
3	3.569	4.610	29,2
TOPLAM / TOTAL	7.818	9.534	22,0

Yıl / Year	1	2	3	4	5	6	7	8	9	10	11	12	1-3 Toplam / Total	Toplam / Total	1-3 Yerli / Local	1-3 İthal / Import	İthal Oran / Import %
2015	2.641	3.890	6.463	4.580	4.262	4.913	3.522	2.667	3.156	2.831	3.830	8.291	12.994	51.046	10.175	2.819	21,7
2016	1.656	2.015	2.984	2.861	3.186	3.126	1.199	2.098	1.820	2.666	3.153	3.794	6.655	30.558	4.398	2.257	33,9
2017	1.317	1.620	2.376	2.243	2.644	2.162	2.430	2.282	2.694	2.687	2.913	5.267	5.313	30.635	4.078	1.235	23,2
2018	1.449	1.759	3.255	2.760	2.241	1.751	1.460	791	887	750	1.202	2.308	6.463	20.613	4.355	2.108	32,6
2019	474	694	1.430	973	931	1.211	515	586	1.076	1.213	1.399	2.385	2.598	12.887	1.714	884	34,0
2020	850	1.826	1.546	708	1.073	1.816	2.018	2.037	2.787	2.392	2.683	3.626	4.222	23.362	3.063	1.159	27,5
2021	1.580	2.821	3.618	3.063	2.776	3.485	1.883	2.119	2.576	3.318	3.871	4.390	8.019	35.500	5.136	2.883	36,0
2022	1.610	2.378	3.974	2.549	3.054	4.136	3.218	3.961	4.220	3.850	4.188	6.742	7.962	43.880	5.912	2.050	25,7
2023	2.684	3.633	5.729	4.397	4.671	4.189	3.688	3.955	4.069	3.814	4.487	6.095	12.046	51.411	8.282	3.764	31,2
2024	2.821	4.770	4.316	3.218	4.657	3.170	3.499	3.843	3.410	3.121	4.008	6.447	11.907	47.280	8.171	3.736	31,4
2025	1.806	3.118	4.610										9.534	9.534	6.203	3.331	34,9

**İhracat / Üretim(x1000) (2015 - 2025 / 1 - 3)(Traktör Dahil)**  
Exports / Production(x1000) (2015 - 2025 / 1 - 3)(Including Tractors)



	2015	2016	2017	2018	2019	2020	2021	2022	2023	2024	2025
<b>İhracat/Export</b>	253.679	270.104	358.682	347.596	323.794	279.991	264.715	230.243	259.074	261.424	257.212
<b>Üretim/Production</b>	347.317	360.151	436.510	439.389	366.260	348.598	360.766	315.410	382.504	390.925	352.299
<b>İhracat/Exports (%)</b>	73	75	82,2	79,1	88,4	80,3	73,4	73	67,7	66,9	73

**Taşıt Araçları İhracatı (2023 - 2025)**  
Motor Vehicle Exports (2023 - 2025)

SEKTÖR / SECTOR	2023	2024	1/3-2024	1/3-2025	2025/2024 %
OTOMOBİL / Pass.Car	663.090	654.115	154.318	149.843	-2,9
<b>OTOMOBİL TOPLAM / Pass. Car Total</b>	<b>663.090</b>	<b>654.115</b>	<b>154.318</b>	<b>149.843</b>	<b>-2,9</b>
KAMYON / Truck	21.566	10.024	3.827	1.628	-57,5
KAMYONET / Pick Up	291.052	279.520	87.115	76.331	-12,4
OTOBÜS / Bus	9.447	8.674	2.428	2.340	-3,6
MINİBÜS / Minibus	31.421	58.922	8.670	24.181	178,9
MİDİBÜS / Midibus	1.671	1.779	504	360	-28,6
<b>TİCARİ ARAÇLAR TOPLAM / Commercial Vehicle Total</b>	<b>355.157</b>	<b>358.919</b>	<b>102.544</b>	<b>104.840</b>	<b>2,2</b>
<b>TAŞIT ARAÇLARI TOPLAM / Motor Vehicles Total</b>	<b>1.018.247</b>	<b>1.013.034</b>	<b>256.862</b>	<b>254.683</b>	<b>-0,8</b>
TRAKTÖR / F.Tractor	16.752	12.976	4.562	2.529	-44,6
<b>TRAKTÖR TOPLAM / F.Tractor Total</b>	<b>16.752</b>	<b>12.976</b>	<b>4.562</b>	<b>2.529</b>	<b>-44,6</b>
<b>GENEL TOPLAM / GRAND TOTAL</b>	<b>1.034.999</b>	<b>1.026.010</b>	<b>261.424</b>	<b>257.212</b>	<b>-1,6</b>

**Üretici Bazında İhracat (adet)**  
Exports by Manufacturer (unit)

Üreticiler / Manufacturers	2023	2024	1-3 / 2024	1-3 / 2025
A.I.O.S.	1.102	1.067	301	208
FORD OTOSAN	311.104	330.240	90.368	94.891
HATTAT TRAKTÖR	736	460	102	83
HYUNDAI MOTOR TÜRKİYE	205.200	204.000	56.883	51.500
KARSAN	428	487	61	45
M. BENZ TÜRK	18.062	9.134	3.634	1.691
MAN TÜRKİYE	2.933	2.413	1.009	843
OTOKAR	2.584	2.240	458	478
OYAK RENAULT	230.397	241.398	49.070	64.828
TEMSA	1.161	1.386	383	348
TOFAŞ	60.479	33.568	16.768	7.356
TOYOTA	184.797	187.101	37.927	32.495
TÜRK TRAKTÖR	16.016	12.516	4.460	2.446
<b>GENEL TOPLAM / Grand Total</b>	<b>1.034.999</b>	<b>1.026.010</b>	<b>261.424</b>	<b>257.212</b>



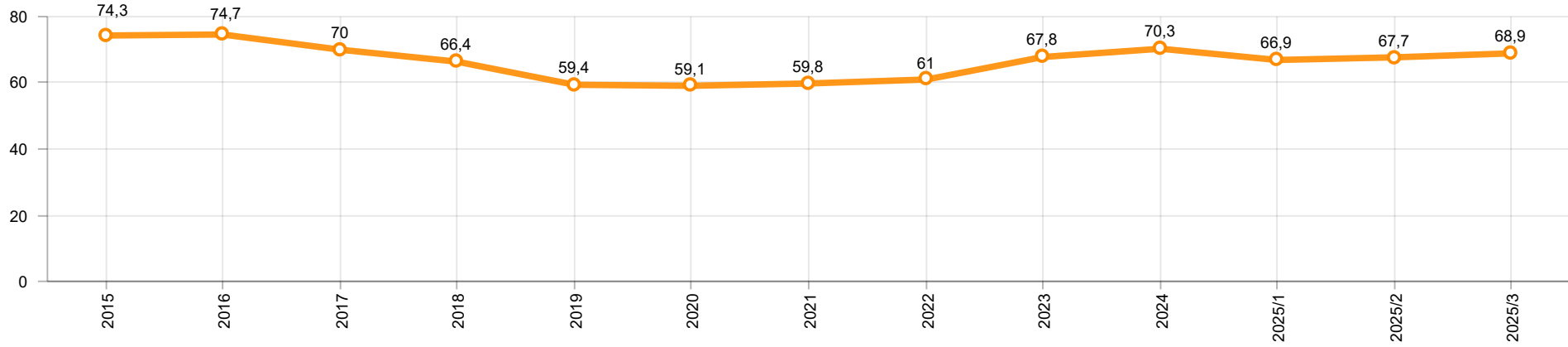
**Otomotiv Ana ve Yan Sanayii İhracatı (ABD \$)**  
CBU and CKD Exports - \$

Sektör / Sector	2023	2024	OCAK - MART / January - March 2024	OCAK - MART / January - March 2025	2025 / 2024 %
<b>Toplam Yan Sanayi / Total Component Industry</b>	<b>14.078.295.394,55</b>	<b>14.839.169.793,6</b>	<b>3.707.365.147,45</b>	<b>3.819.166.740,79</b>	<b>3,0</b>
İç ve Dış Lastik / Tyres	1.724.808.180,08	1.695.712.002,38	413.844.871,48	459.384.549,79	11,0
Emniyet Camı / Safety Glasses	263.055.895,3	280.208.750,29	69.754.343,34	69.842.793,92	0,1
Motor / Engine	253.590.728,57	382.946.759,3	67.933.464,55	128.820.346,61	89,6
Akümülatör / Batteries	482.228.706,9	574.440.860,83	134.504.416,42	120.494.911,2	-10,4
Diğer Aksam ve Parça / Spare Parts&Components	11.354.611.883,7	11.905.861.420,8	3.021.328.051,66	3.040.624.139,27	0,6
<b>Toplam Ana Sanayi / Total Vehicle Industry</b>	<b>21.608.331.077,73</b>	<b>21.911.627.756,63</b>	<b>5.507.774.040,65</b>	<b>5.566.506.587,17</b>	<b>1,1</b>
Otobüs / Bus	1.786.354.748,27	1.928.277.914,79	524.571.237,15	547.207.579,22	4,3
Midibüs-Minibüs / Midibus-Minibus	342.622.940,87	458.784.135,36	100.730.749,34	93.070.198,41	-7,6
Otomobil / P.Cars	10.934.266.126,78	11.284.675.238,86	2.471.507.065,65	2.758.092.225,91	11,6
Kamyon-Kamyonet / Truck-Pick Up&Van	5.646.557.915,75	6.387.961.337,89	1.820.857.017,4	1.843.100.238,07	1,2
Römork ve Yarı Römork / Trailer-Semi Trailer	777.402.947,62	670.091.733,43	176.966.253,61	122.437.315,96	-30,8
Çekici / Tractor	1.527.261.816,27	653.234.993,5	262.064.754,24	101.341.141,34	-61,3
Tarım Traktörü / Farm Tractor	593.864.582,17	528.602.402,8	151.076.963,26	101.257.888,26	-33,0
<b>Toplam / Total</b>	<b>35.686.626.472,28</b>	<b>36.750.797.550,23</b>	<b>9.215.139.188,1</b>	<b>9.385.673.327,96</b>	<b>1,9</b>

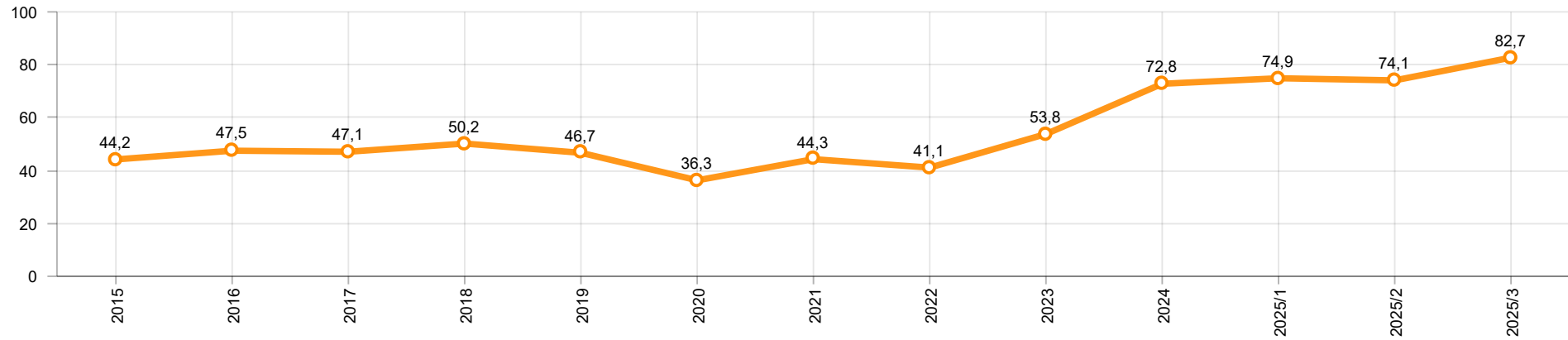
Kaynak: Uludağ İhracatçı Birlikleri . ÜİB tarafından OSD için özel olarak analiz edilen Otomotiv İhracatı kapsamında; ÜİB Türkiye Geneli Otomotiv Endüstrisi sınıflandırmasına kıyasla “Römork ve Yarı Römork” , “Tarım Traktörü” verileri dahil edilmekte; “Kullanılmış Araçlar” , “İki Tekerlekli Taşıtlar” , “Demiryolu Taşıtları” hariç tutulmaktadır.

Source: Uludağ Exporters Association – Special Analyze for OSD.Compared to Turkish General Automotive Industry classification, this special analyze includes; farms tractors, trailers and semi-trailers, does not include; used vehicles, two-wheeled vehicles and railway vehicles

**Otomobil Pazarında İthalatın Payı (%)**  
Import Share in P.Car Market (%)



**Hafif Ticari Araçlar Pazarında İthalatın Payı (%)**  
Import Share in LCV Market (%)



Araç Tipleri / Vehicle Types	1	2	3	4	5	6	7	8	9	10	11	12	Toplam / Total
<b>OTOMOBİL - Pass.Car</b>	<b>47.316</b>	<b>45.811</b>	<b>56.716</b>										<b>149.843</b>
KAMYON - H. Truck	431	503	673										1.607
K.KAMYON - L. Truck	-	10	11										21
KAMYONET - Pick Up	22.491	25.334	28.506										76.331
OTOBÜS - Bus	703	787	850										2.340
MİNİBÜS - Minibus	7.178	7.418	9.585										24.181
MİDİBÜS - Midibus	72	98	190										360
<b>TİCARİ ARAÇLAR TOPLAMI - CV Total</b>	<b>30.875</b>	<b>34.150</b>	<b>39.815</b>										<b>104.840</b>
<b>TAŞIT ARAÇLARI TOPLAMI - MV Total</b>	<b>78.191</b>	<b>79.961</b>	<b>96.531</b>										<b>254.683</b>
TRAKTÖR - F.Tractor	739	913	877										2.529
<b>GENEL TOPLAM - Grand Total</b>	<b>78.930</b>	<b>80.874</b>	<b>97.408</b>										<b>257.212</b>

**Otomobil / P.Car**

Firmalar / Firms	1	2	3	4	5	6	7	8	9	10	11	12	Toplam / Total
FORD OTOSAN	-	-	-	-	-	-	-	-	-	-	-	-	-
HYUNDAI MOTOR TÜRKİYE	17.900	16.600	17.000	-	-	-	-	-	-	-	-	-	51.500
OYAK RENAULT	16.185	20.007	28.636	-	-	-	-	-	-	-	-	-	64.828
TOFAŞ	97	303	620	-	-	-	-	-	-	-	-	-	1.020
TOYOTA	13.134	8.901	10.460	-	-	-	-	-	-	-	-	-	32.495
<b>TOPLAM - Total</b>	<b>47.316</b>	<b>45.811</b>	<b>56.716</b>	-	-	-	-	-	-	-	-	-	<b>149.843</b>

**Kamyonet / Pick-up**

Firmalar / Firms	1	2	3	4	5	6	7	8	9	10	11	12	Toplam / Total
A.I.O.S.	-	-	-	-	-	-	-	-	-	-	-	-	-
FORD OTOSAN	22.453	22.742	24.775	-	-	-	-	-	-	-	-	-	69.970
KARSAN	-	-	-	-	-	-	-	-	-	-	-	-	-
OTOKAR	-	1	24	-	-	-	-	-	-	-	-	-	25
TOFAŞ	38	2.591	3.707	-	-	-	-	-	-	-	-	-	6.336
<b>TOPLAM - Total</b>	<b>22.491</b>	<b>25.334</b>	<b>28.506</b>	-	-	-	-	-	-	-	-	-	<b>76.331</b>

**Minibüs / Minibus**

Firmalar / Firms	1	2	3	4	5	6	7	8	9	10	11	12	Toplam / Total
FORD OTOSAN	7.178	7.418	9.547	-	-	-	-	-	-	-	-	-	24.143
KARSAN	-	-	38	-	-	-	-	-	-	-	-	-	38
<b>TOPLAM - Total</b>	<b>7.178</b>	<b>7.418</b>	<b>9.585</b>	-	-	-	-	-	-	-	-	-	<b>24.181</b>

**Kamyon / Truck**

Firmalar / Firms	1	2	3	4	5	6	7	8	9	10	11	12	Toplam / Total
A.I.O.S.	-	-	-	-	-	-	-	-	-	-	-	-	-
FORD OTOSAN	419	200	159	-	-	-	-	-	-	-	-	-	778
KARSAN	-	-	-	-	-	-	-	-	-	-	-	-	-
M. BENZ TÜRK	12	303	514	-	-	-	-	-	-	-	-	-	829
OTOKAR	-	10	-	-	-	-	-	-	-	-	-	-	10
<b>TEMSA</b>	-	-	<b>11</b>	-	-	-	-	-	-	-	-	-	<b>11</b>
<b>TOPLAM - Total</b>	<b>431</b>	<b>513</b>	<b>684</b>	-	-	-	-	-	-	-	-	-	<b>1.628</b>

**Midibüs / Midibus**

Firmalar / Firms	1	2	3	4	5	6	7	8	9	10	11	12	Toplam / Total
A.I.O.S.	23	36	117	-	-	-	-	-	-	-	-	-	176
KARSAN	-	-	7	-	-	-	-	-	-	-	-	-	7
OTOKAR	28	40	49	-	-	-	-	-	-	-	-	-	117
TEMSA	21	22	17	-	-	-	-	-	-	-	-	-	60
<b>TOPLAM - Total</b>	<b>72</b>	<b>98</b>	<b>190</b>	-	-	-	-	-	-	-	-	-	<b>360</b>

**Otobüs / Bus**

Firmalar / Firms	1	2	3	4	5	6	7	8	9	10	11	12	Toplam / Total
A.I.O.S.	9	4	19	-	-	-	-	-	-	-	-	-	32
KARSAN	-	-	-	-	-	-	-	-	-	-	-	-	-
M. BENZ TÜRK	256	300	306	-	-	-	-	-	-	-	-	-	862
MAN TÜRKİYE	242	271	330	-	-	-	-	-	-	-	-	-	843
OTOKAR	114	98	114	-	-	-	-	-	-	-	-	-	326
TEMSA	82	114	81	-	-	-	-	-	-	-	-	-	277
<b>TOPLAM - Total</b>	<b>703</b>	<b>787</b>	<b>850</b>	-	-	-	-	-	-	-	-	-	<b>2.340</b>

**Traktör / F.Tractor**

Firmalar / Firms	1	2	3	4	5	6	7	8	9	10	11	12	Toplam / Total
HATTAT TRAKTÖR	18	41	24	-	-	-	-	-	-	-	-	-	83
TÜRK TRAKTÖR	721	872	853	-	-	-	-	-	-	-	-	-	2.446
<b>TOPLAM - Total</b>	<b>739</b>	<b>913</b>	<b>877</b>	-	-	-	-	-	-	-	-	-	<b>2.529</b>

Firmalar / Firms	2024 Toplam / Total	1	2	3	4	5	6	7	8	9	10	11	12	Toplam / Total
Alfa Romeo	1.255	113	96	138	-	-	-	-	-	-	-	-	-	347
Aston Martin	15	4	3	2	-	-	-	-	-	-	-	-	-	9
Audi	19.700	970	1.745	1.811	-	-	-	-	-	-	-	-	-	4.526
Bentley	37	2	2	2	-	-	-	-	-	-	-	-	-	6
BMW	25.784	1.771	2.374	3.706	-	-	-	-	-	-	-	-	-	7.851
BYD	8.331	2.758	2.583	2.870	-	-	-	-	-	-	-	-	-	8.211
Chery	57.047	1.016	2.690	2.916	-	-	-	-	-	-	-	-	-	6.622
Citroen	43.219	2.126	1.752	3.542	-	-	-	-	-	-	-	-	-	7.420
CUPRA	9.663	423	436	1.178	-	-	-	-	-	-	-	-	-	2.037
Dacia	33.658	1.359	1.839	2.077	-	-	-	-	-	-	-	-	-	5.275
DFSK	504	21	8	26	-	-	-	-	-	-	-	-	-	55
DS	1.971	125	142	143	-	-	-	-	-	-	-	-	-	410
Ferrari	24	-	2	2	-	-	-	-	-	-	-	-	-	4
Fiat	1.073	13	10	36	-	-	-	-	-	-	-	-	-	59
Ford	29.617	1.619	2.153	2.571	-	-	-	-	-	-	-	-	-	6.343
Honda	23.632	1.195	1.384	1.010	-	-	-	-	-	-	-	-	-	3.589
HONGQI	15	1	1	-	-	-	-	-	-	-	-	-	-	2
Hyundai	17.429	1.264	1.410	1.854	-	-	-	-	-	-	-	-	-	4.528
JAECOO	3.586	421	503	701	-	-	-	-	-	-	-	-	-	1.625
Jaguar	60	2	5	10	-	-	-	-	-	-	-	-	-	17
Jeep	3.366	204	186	258	-	-	-	-	-	-	-	-	-	648
KG MOBILITY	9.426	622	804	630	-	-	-	-	-	-	-	-	-	2.056
Kia	17.967	1.564	2.091	2.882	-	-	-	-	-	-	-	-	-	6.537
Lamborghini	22	-	1	2	-	-	-	-	-	-	-	-	-	3
Land Rover	2.973	186	171	204	-	-	-	-	-	-	-	-	-	561
LEAPMOTOR	218	7	3	4	-	-	-	-	-	-	-	-	-	14
Lexus	816	29	43	81	-	-	-	-	-	-	-	-	-	153
Maserati	276	14	10	25	-	-	-	-	-	-	-	-	-	49
Mercedes-Benz	29.967	1.924	2.152	3.089	-	-	-	-	-	-	-	-	-	7.165
MG	17.162	143	175	273	-	-	-	-	-	-	-	-	-	591
Mini	4.755	292	1.005	1.147	-	-	-	-	-	-	-	-	-	2.444
Nissan	27.088	1.440	2.015	2.753	-	-	-	-	-	-	-	-	-	6.208
Opel	45.212	2.416	3.502	3.698	-	-	-	-	-	-	-	-	-	9.616
Peugeot	53.886	2.425	4.032	7.980	-	-	-	-	-	-	-	-	-	14.437
Porsche	1.203	74	91	125	-	-	-	-	-	-	-	-	-	290
Renault	26.437	1.846	2.183	1.817	-	-	-	-	-	-	-	-	-	5.846
Seat	12.470	300	563	751	-	-	-	-	-	-	-	-	-	1.614
Skoda	43.972	2.359	2.262	3.767	-	-	-	-	-	-	-	-	-	8.388
SKYWELL	388	22	12	8	-	-	-	-	-	-	-	-	-	42
Subaru	335	75	36	38	-	-	-	-	-	-	-	-	-	149
Suzuki	5.894	295	386	461	-	-	-	-	-	-	-	-	-	1.142
TESLA	11.534	-	3.310	100	-	-	-	-	-	-	-	-	-	3.410
Toyota	10.004	987	1.652	1.268	-	-	-	-	-	-	-	-	-	3.907
Volkswagen	74.533	4.293	4.946	6.193	-	-	-	-	-	-	-	-	-	15.432
Volvo	13.024	698	730	1.133	-	-	-	-	-	-	-	-	-	2.561
<b>GENEL TOPLAM - Grand Total</b>	<b>689.666</b>	<b>37.418</b>	<b>51.499</b>	<b>63.282</b>	<b>-</b>	<b>-</b>	<b>-</b>	<b>-</b>	<b>-</b>	<b>-</b>	<b>-</b>	<b>-</b>	<b>-</b>	<b>152.199</b>

Firmalar / Firms	2024 Toplam / Total	1	2	3	4	5	6	7	8	9	10	11	12	Toplam / Total
Citroen	18.009	1.027	1.361	3.062	-	-	-	-	-	-	-	-	-	5.450
DFSK	675	43	36	44	-	-	-	-	-	-	-	-	-	123
Fiat	24.516	1.601	1.484	1.911	-	-	-	-	-	-	-	-	-	4.996
Ford	33.844	1.814	2.085	2.653	-	-	-	-	-	-	-	-	-	6.552
FOTON	-	5	48	230	-	-	-	-	-	-	-	-	-	283
Hyundai	4.414	51	41	73	-	-	-	-	-	-	-	-	-	165
Isuzu	1.584	36	33	87	-	-	-	-	-	-	-	-	-	156
Iveco	3.850	110	301	558	-	-	-	-	-	-	-	-	-	969
KG MOBILITY	2.444	158	206	247	-	-	-	-	-	-	-	-	-	611
MAXUS	302	20	31	12	-	-	-	-	-	-	-	-	-	63
Mercedes-Benz	10.260	554	698	1.169	-	-	-	-	-	-	-	-	-	2.421
Opel	17.244	1.078	1.094	3.541	-	-	-	-	-	-	-	-	-	5.713
Peugeot	19.656	921	1.047	3.143	-	-	-	-	-	-	-	-	-	5.111
Renault	15.677	613	564	1.162	-	-	-	-	-	-	-	-	-	2.339
Toyota	9.086	524	787	1.067	-	-	-	-	-	-	-	-	-	2.378
Volkswagen	22.266	969	1.078	1.780	-	-	-	-	-	-	-	-	-	3.827
<b>GENEL TOPLAM - Grand Total</b>	<b>188.048</b>	<b>9.524</b>	<b>10.894</b>	<b>20.739</b>	-	-	-	-	-	-	-	-	-	<b>41.157</b>